

Connecting Threads

Handweavers Guild of Boise Valley ~ December, 2025



December Program: Potluck and President's Challenge

Our December Guild Meeting, Potluck, and President's Challenge Napkin Exchange is Saturday, December 6th at 11:30 a.m. I can't wait to see what everyone has created for the challenge and for all the great food! Remember to bring a potluck dish to share and your own place setting.

We have reserved the **Fairview Terrace Community Center** for December's meeting. The Center is located at: **700 East Fairview Avenue in Meridian**. Doors open at 11 a.m. for socializing and the meeting starts at 11:30 a.m.

Also, if you are exchanging napkins for the Challenge, bring your napkin wrapped as a gift, and bring the information about your recipient, so you are able to introduce them.

Directions to the Fairview Terrace Community Center:

The Center is just off Fairview in Meridian behind Fiesta Guadalajara Restaurant.

If you are traveling westbound, just past the restaurant, is Barbara Drive. Turn right on Barbara Drive and go straight until you see the Community Center. There is parking out front of the center and overflow parking at Fiesta Guadalajara. Carpooling is recommended.

There is NO light at Barbara Drive, so the best landmark to look for is Fiesta Guadalajara Restaurant. It's pretty easy to find, but let me know if you have any questions. Google also showed an address for the Center of 144 East Barbara Drive, Meridian ID, so you may need to use this address in your GPS. Hope to see you there!

❖ Lisa Baker, Vice President

Calendar of Events

Board Meeting

December 6, 2025 ~ 9:30 a.m.

At the Fairview Terrace Community Center

Regular Meeting:

December 6, 2025 ~ 11:30 a.m.

Program ~ Annual Potluck & President's Challenge

At the Fairview Terrace Community Center

Next meeting - January 3, 2026

Study Groups:

December 9, 2025 ~ Lace Study Group

10:00 a.m. ~ At the home of Raelene Viste

December 10, 2025 ~ Spinning Study Group

11 a.m. to 2 p.m. ~ At Rubaiyat Bookstore
314 S 6th Ave, in Caldwell

December 11, 2025 ~ Beginning Weaving Study Group

6:00 p.m. ~ At the home of Sheri Bittner

December 14, 2025 ~ Rigid Heddle Study Group

2:00 p.m. to 4:00 p.m. ~ At the U of I classroom,
1902 E Chicago St, Caldwell

December 16, 2025 ~ Day Weaving Study Group

10:30 a.m. ~ At the home of Kelly Sandusky

December 18, 2025 ~ Tapestry Study Group

10:30 a.m. ~ At the home of Kelly Sandusky

December 30, 2025 ~ Garment Study Group

10:30 a.m. ~ At the home of Julie Gerrard

January 11, 2026 ~ Paper Study Group

1:30 p.m. ~ At the home of Rebecca Winter

Change of dates - See details under Study Groups

Every Thursday ~ Thursday Fiber Friends Zoom

2:00 p.m. ~ Meets on Zoom

Weaving Intensive Study Group:

January 17, 18 & 19, 2026 ~ Topic: Doubleweave

Learn to Weave Weekend ~ Study Group:

April 18 & 19, 2026

Workshops:

June 19, 20, & 21, 2026 - Understanding Profile
Drafting. by Deb Essen

~ See more information later in this ~
Newsletter for the above 3 events.

To find Member Contact Information, Log-In to your groups.io account and look in "Files" for the Membership Directory.
The link to the BoiseGuildGroup is [HERE](#).



January Program

The program for the guild meeting on January 3, 2026. will be the Mini-Workshops. The following guild members have generously volunteered to teach the following:

- Kumihimo 12-Cord Flat Braid, with Esther Kleinkauf
- 5-Hole Pamphlet Stitch Mini Journal, with Rebecca Winter
- Handspinning Art Yarn; The Basics, with Khara Oxier-Mori
- Plarn: What, Why and How to Save the Planet Through Plastics, with Cyn Brandt

If you would like to sign up for a mini-workshop (if you didn't already do it at the last meeting) you can email Robin Conrads. or sign up at the December meeting.

♦ Robin Conrads, Vice President

January Weaving Intensive

This is a reminder that we are accepting your registration for the Weaving Intensive now. Find the information about the Intensive later in this Newsletter.

Register by paying the \$35.00 fee - by either sending it to Cindy Griewe or you can pay online on the Guild website at [THIS LINK](#). Scroll all the way to the bottom of the page. There is an additional small fee for the convenience of paying electronically.

The other task we are requesting is to let me (Rebecca) know a bit about what you are planning for your study. We are hoping to encourage a wide variety of topics by keeping track of this piece.

I've heard about several people already working on their study in preparation for when we meet in January. And I encourage anyone interested to begin your bit of study or research soon. Jump on in - the water's fine.

♦ Rebecca Winter, Intensive Co-chair

President's Letter:

It's almost time for the annual potluck and President's Challenge napkin exchange! I can't wait to see what everyone has created! I have enjoyed getting to learn things about a guild member and am looking forward to sharing with everyone.

I hope you are finding time to create during the last month of the year. It always seems to feel snug and cozy as the days get shorter, leading me to spend more time with my loom. I was inspired by Mary's presentation at the past guild meeting, and been sampling for the Doubleweave Intensive. How about you? Are you signing up for the intensive?

Speaking of inspiration, I hope you are finding lots of inspiration as you attend one of the guild's study groups. We have a diverse collection of topics to our study groups including: Rigid heddle weaving, lace making, spinning, and an online Fiber Friends group. And that is not all of the groups that we have! Check out the list below to find a group that interests you. And if there is a topic that you would like to know more about, think about starting a study group to explore it!

I look forward to seeing everyone at the December potluck. Bring your own plate and silverware as well as a dish to share and your napkin to exchange! See you there!

♦ Katzy Luhring, President

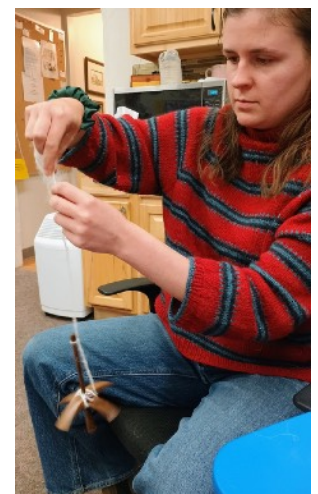
Study Groups:

Spinning Study Group

The December Study Group will be meeting on the 10th from 11-2 at the Rubaiyat. We always look forward to new faces and skills of ALL LEVELS!

Our November meet up brought 2 new faces, including a brand new spinner using her first drop spindle. We were happy to have them and we hope they come back again! They are Vicky Gray and Morgan Leamer.

♦ Jeannie Phillips, Study Group Chair



Tapestry Study Group

We had a good time on November 20th at Anne Oglevie's amazing studio! There were 6 of us, and we decided to meet again on Dec. 18 at 10:30 am at Kelly Sandusky's house. As always, everyone is invited to attend.

We discussed whether or not to have a specific "agenda" for future meetings, and the consensus was to have it be free-form for the time being - bring something to show and tell, bring a loom to work on, or whatever you like. There were several good suggestions about possible future "focus" meetings, such as demonstration or guidance on weaving circles, 4-selvedge warping, or finishing techniques.

- ❖ Mary Donato

Lace Study Group

The Lace Study group will meet Tuesday, December 9th from 10pm to 12pm at Raelene Viste's.

- ❖ Vila Cox, Study Group Chair

Beginning Weaving Study Group

The beginning weaving group will meet at Sheri Bittner's home on December 11 at 6 pm. The topic for this month is "Fibers."

- ❖ Sherry Bittner, the Very Happy Beginning Study Group Chair

Day Weaving Study Group

The monthly Day Weaving Group will meet December 16 at 10:30-1:30ish. The December meeting will be in Emmett at Kelly Sandusky's home. Bring questions and projects to share with other weavers.

- ❖ Greta Ankeny, Study Group Chair

Rigid Heddle Study Group

Sunday, Dec 14

1902 E Chicago St, Caldwell

Meeting starts at 2pm

Doors open at 1:45 for loom setup

Topic: Pick-up Sticks

Bring any info you have to share, as well as questions you have on this topic. And bring your loom if you are inclined to weave along during the meeting.

A reminder: Zoom info will be sent ~ 1 week prior to meeting.

- ❖ Jinks Hunter & Jenne Schiffhauer

Paper Study Group

Wow! Did we ever have a great variety of paper projects to discuss at our recent meeting. Members are pursuing in-depth paper processes, and we are coming up with even more ideas for inspiration.

Because of the holidays and the Weaving Intensive we have changed the date of our next meeting. We plan to meet next on January 11, 2026. Bring your Show and Tell to share, and plan to share any new study information you have found.

- ❖ Rebecca Winter, Study Group Chair

Garment Study Group

The Garment study group will meet on Tuesday December 30th at 10.30am at the home of Julie Gerrard. Everyone is welcome to attend.

- ❖ Anne Oglevie, Study Group Chair

Thursday Fiber Friends

We are an informal group who meet at 2pm every Thursday via zoom. We work on our projects, help each other with project questions and chat about whatever comes up. We feel free to stay the whole time (and make some progress on that project) or just pop in for a bit of time for a quick catch up when busy with other stuff. We're very flexible - please feel welcome to join us.

- ❖ Jinks Hunter, Study Group Chair

Sample Box

Happy holidays! We don't have a sample for the box this month. I'd like to encourage everyone to consider adding to our sample box. We only need 10 to 20 small bits of your creativity, and a brief description on a form, available on the website. It would be awesome to have your ideas and talents to share with everyone.

Are you planning to go to the Weaving Intensive? How about submitting the last portion of your warp after the Intensive for the Sample Box to share with additional members?

❖ Christie Farrin, Sample Box Chair



LEARN TO WEAWE WEEKEND 2026

SAVE THE DATE: APRIL 18-19, 2026

LOCATION: Fairview Terrace Community Center

CONTACTS: Cindy Griewe or Robin Conrads

REGISTRATION: to open in January 2026

LIMITED to 14 learner-participants (with approx. 6 mentors also invited)

Description

- Bring your loom, shuttle, and weaving tools to this 2-day weekend of learning to experience the basics of drafts, warping, and weaving.
- Basic instruction, discussion, and mentor assistance will help you better understand the art of weaving.
- Cost TBD, but will probably be around \$40.00.

Specifics

- Rigid heddle or shaft looms (table or floor) can be used for this weaving experience. Some looms are available on loan from the guild on a first come first serve basis.
- Warp will be provided to create approximately 6 dishcloths in either twill or plain weave.

Officers & Guild Board

- President - Katzy Luhning
- Vice President - Robin Conrads
- Vice President - Lisa Baker
- Secretary - Dyan Lay
- Treasurer - Kelly Sandusky
- Membership Officer - Cindy Griewe
- Past President - Mary Berent

Chairs

- Librarian - Sally Johnston
- Web Master - Robin Conrads, Dyan Lay
- Equipment - Vila Cox
- Newsletter Editor - Rebecca Winter
- Pat Ann Fund Administrator - Anne Oglevie
- Sample Exchange - Christie Farrin
- Outreach Committee - Janet Stanger
- Social Media - Dyan Lay
- ANWG Representative - Connie Griffin
- Spinning Study Group - Jeannie Phillips
- 2026 Weaving Intensive Study Group
 - * Kelly Sandusky
 - * Rebecca Winter
 - * Chelsea Grigsby
 - * Cindy Griewe
- Day Weaving Study Group - Greta Ankeny
- Beginning Weaving Study Group - Sherry Bittner
- Garment Study Group - Anne Oglevie
- Lace Study Group - Vila Cox
- Thursday Fiber Friends Zoom - Jinks Hunter
- Tapestry Study Group - Jaimie Landry
- Paper Study Group - Rebecca Winter
- Tour de Fleece - Jinks Hunter
- Church of Christ Contact Person - Vila Cox
- Bowmont Church Contact Person - Rebecca Winter
- Fairview Terrace Community Center Contact Person - Rebecca Winter
- Post Office Box Name Holder - Mitzi Meyers
- Mail Collector - Mitzi Meyers

Website

<http://www.handweavers-guild-boise.org>

Facebook [Click Here for Link](#)

Mailing Address

PO Box 6258, Boise, ID 83707



2026 Weaving Intensive Study Group

Doubleweave

A Weaving Retreat, with Weaving Presented by Each Participant

Saturday, Sunday, and Monday - **January 17, 18 & 19, 2026**

9 AM to 5 PM - Location: University of Idaho R&E Center

1902 E. Chicago St., Caldwell, ID 83605

Fee - \$35.00 - A Great Value!



- This is our usual “teacherless” workshop-style event. We each have the opportunity to be the expert in our chosen area of study related to Doubleweave.
- Choose a favorite type of Doubleweave to share with the group.
- Study your topic and create a sample warp, which demonstrates what you have learned.
- Choose any yarn that is appropriate for the draft and design.
- Provide all the materials needed to weave all the samples on your loom. Calculate your warp length by the number of possible samples needed, which is the number of participants in the Intensive. Generally, if you are planning about 6-inch long samples, 4 to 5 yards will suffice. Warp width is best at about 6 inches, or a width needed to show your design.
- Mentors are available prior to the workshop to guide you in your study or help you prepare!
- This is a round robin workshop. Each person moves from loom to loom weaving samples on the looms of other participants. Weave as many as you wish.
- At the beginning of the Intensive each participant will present their Doubleweave study to the group, and give instructions for weaving. Plan for the presentations to be about 8 to 10 minutes. If you need help with presenting, the mentors are available to assist and reassure.
- You may wish to weave your own sample ahead of time so you can teach from experience how the sample works. An additional possibility is to cut your sample from the loom and retie. This gives you the opportunity to show finishing methods applicable to the sample. These steps are optional.
- We recognize, and also value, the camaraderie and social aspect of the Intensive. We envision this opportunity to have great potential for experimentation and learning. Just think of the benefit of three days of discussion and exploration with others of like mind.
- We ask you to submit printable project plans and draft sheets (electronic or hard copy). Each participant will receive a binder containing all of the plan sheets and drafts.
 - ~ **Please include all information required for reproducing this cloth.** This includes 6 things - threading, tie-up, treadling, yarn, sett, and colorway.
 - ~ We need more than just a .wif file.
 - ~ Additional notes about what you learned are also wonderful to have. There are Weaving Record Sheets available in the Library and on the Guild website [HERE](#).
 - ~ Send all your weaving record information in printable form to Rebecca Winter by **January 3, 2026**.
- Bring your loom warped and ready to go. Bring yarn & equipment, such as shuttles & bobbins, to weave samples on your loom. Bring waste yarn to frame the samples you weave & labels to identify them. Bring scissors or other necessary tools. Bring basic loom tools & anything needed for possible repairs.

The Fine Print:

- ★ The workshop is open to guild members. If non-members wish to attend the Intensive, we invite them to join the guild.
- ★ There are Guild Looms available. No rent is assessed for Guild Workshops or Intensives.
- ★ Keep this information available, as it is the only pre-Intensive information you will receive.
- ★ Your payment of the fee is your confirmation for participation in this event.
- ★ The Guild will accept cancellations with a refund through January 3, 2026. After this date cancellations will be considered on an individual basis.
- ★ Bring sack lunches, drinks, snacks to share as you wish.

Return the following information with your fee to Kelly Sandusky or Cindy Griewe. Or you may wish to pay online.

Find the online registration page on the Guild Public Website [HERE](#).

Name _____ Phone _____

Email _____ Fee amount included \$ _____



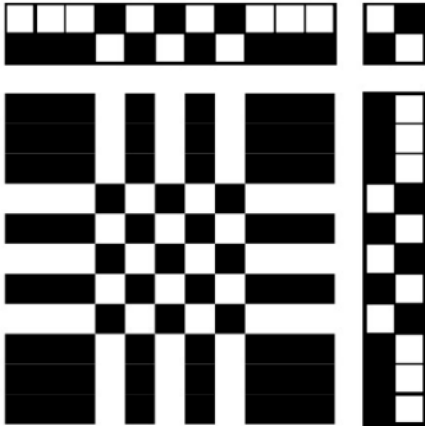
UNDERSTANDING PROFILE DRAFTS

with Deb Essen

June 19, 20, 21 - 2026

Fairview Terrace Community Center – Meridian, ID

Have you seen drafts like this and wondered how you use it to create fabric?



Learn how to use profile drafts as a powerful weaving design tool! We will learn how to translate a profile draft into thread by thread drafts for several weave structures.

We will also discuss what kind of weave structures can use profile drafts and what structures can't. Samples in round robin format, so everyone will go home with a sample of at least 5 weave structures discussed in class and have a chance to play with them.

The workshop is open to members of the Handweavers Guild of Boise Valley and will be held June 19 – 21, 2026, at the Fairview Terrace Community Center in Meridian. If you would like to attend the workshop but are not a member of the Guild; memberships are just \$35.00 <https://www.handweavers-guild-boise.org/>.

The cost of the workshop will be determined by the number of attendees, but should be in the realm of \$150.00 to \$175.00. For comparison, workshops like this that are offered at conferences such as ANWG usually charge ~ \$400.00.

Students will bring their table or floor loom un-warped, because students will be warping looms in class (students must be comfortable warping their looms independently). Pre-class instructions will be sent to attendees in May. The class is geared toward advanced beginners through intermediate weavers.

If you have any questions about the workshop, please contact Lisa Baker or Robin Conrads: email addresses are available through the Guild's groups.io site.



Deb Essen lives, weaves, and runs her business dje handwovens in the Bitterroot Valley, nestled in the Rocky Mountains of western Montana. In 2004, Deb achieved the Certificate of Excellence in Handweaving- Level 1 through the Handweaver's Guild of America. In 2011 she was inducted to the Montana Circle of American Masters in Folk and Traditional Art. Her book, Easy Weaving With Supplemental Warps, was published originally by Interweave Press in 2016. In 2022, the book was re-released as an expanded revised edition, with more projects and weave structures, by Schiffer Publishing. She has recorded five weaving videos, available through Long Thread Media, ranging from supplemental warps to profile drafting and has written multiple feature articles for Handwoven and Little Looms magazines. Deb is passionate about teaching about the wonders of weaving and teaches at shops, guilds, regional and national conferences and festivals.



Regular Meeting Minutes ~ November 1, 2025

Call To Order at 11:31AM

- Present were 39 attendees: Katzy Luhning, Dyan Lay, Vila Cox, Robin Conrads, Lisa Baker, Cindy Griewe, Kelly Sandusky, Rebecca Winter, Tracey Stringer, Esther Kleinkauf, Christie Farrin, Julie Gerrard, Karla Herre, Victoria Julian-Gray, Tom Thompson, Zena Zaleski, Jean Zaske, Connie Griffin, Dagmar Rapp, Mary Donato, Cynthia Newman, Raelene Viste, Linda Morton-Keithley, Irma Atkinson, Cynthia Brandt, Irene Chandler, Hanna Meinikheim, Ginny Mateen, Emily Wall, Chelsea Grigsby, Jane Hoover, Susan Whipple, Greta Ankeny, Kate Holestine, Jeannie Phillips, Tasha Denegal, Suzanne Price, Nancy Swenson, Tessa Stone, Kari Lawton, Nancy Alzola and Mitzi Meyers.

Business

- President – Katzy Luhning
 - Katzy welcomed everyone and explained the President's Challenge.
 - Introductions were made later with each member choosing a weaving tool to bring to a remote island.
- Vice Presidents – Lisa Baker and Robin Conrads
 - Lisa discussed the June workshop by Deb Essen. The sign-up sheet and flyer are now available as well as offered in the newsletter. Payment will be accepted in January.
 - Robin spoke of Mary Berent's program today which is Double Weave.
 - She also mentioned the January program of mini workshops.
 - ◆ Esther Kleinkauf will be teaching Kumihimo, participants do not need to bring anything.
 - ◆ Rebecca Winter will teach a five-hole pamphlet stitch book and will provide a list of supplies to bring.
 - ◆ Khara Oxier-Mori will teach art yarn, so bring any strong fiber.
 - ◆ Cynthia Brandt will be teaching how to weave with plarn.
- Treasurer – Kelly Sandusky
 - Nothing to report.
- Secretary – Dyan Lay
 - Nothing to report.
- Study Groups
 - Rigid Heddle – Jinks Hunter: This group meets monthly the second Sunday, and November's meeting will be at the University of Idaho's Research Center in Caldwell.
 - Lace – Vila Cox: This group meets the second Tuesday at Raelene Viste's home, and they make holes.
 - Spinning – Jeannie Phillips: This group meets the second Wednesday at the Rubaiyat in Caldwell.
 - ◆ Anne Ogilvie is thinking of starting a spinning group in the Fruitland area so let her know if you are interested.
 - Beginning Weaving – Rebecca Winter: This group meets the second Thursday of every month at 6PM; the next meeting is at Rebecca's house.
 - Paper – Rebecca Winter: This group meets the third Sunday at 1:30PM at Rebecca's house. She is looking for participants to bring rusty bits.
 - Day Weaving – Greta Ankeny: This group meets the third Tuesday of every month, and the next meeting is at Jenni Jimmerson's.
 - Garment – Anne Ogilvie: This group meets the fifth Tuesday so only a few times a year.
 - Fiber Friends – Jinks Hunter: This group meets via Zoom every Thursday.
 - Learn to Weave Weekend – Cindy Griewe: The flyer is now available for this April 2026 weekend. Vila C is equipment chair, and participants can borrow a loom. Sign up will be in January.
 - Intensive – Cindy Griewe: This study group meets MLK weekend in January 2026, and members can sign up now. The topic is Double Weave, and the weekend will be held at the U of I Research Center.
- ANWG – Rebecca Winter
 - Our Guild will be creating 250-300 nametags for the June 2027 ANWG conference in Portland, Oregon. If you want to be on the design committee, contact Rebecca.

Show and Tell

- Leah knitted a cowl using Kelly Sandusky's pattern.
- Suzanne Price made table runners with scalloped edges.
- Tessa Stone passed around a Kumihimo piece she created.
- Rebecca Winter completed a "Making Zen" program, major UFO completed with a bag with intact thrums.
- Ginny Mateen brought double weave samples and a quilt she made out of samples.
- Erin brought papers she made at the Paper Study Group.
- Kari Lawton completed a Tranquil Times crocheted wrap and had a great Yarny Social.
- Kelly Sandusky showed two gnome pumpkin bumpkins.
- Hanna Meinikheim brought tiny knit balls, postcards made with woven paper and diagonal paper weaving.
- Emily Wall showed a red sweater and a blue test knit sweater.
- Julie Gerrard said that she cut off the warp for her President's Challenge napkin.
- Victoria Julian-Gray passed around felted slippers she sells at fiber festivals made from 100% recycled old coats.



- Irma Atkinson brought a felted hat, and a crocheted piece called Chaos that she is creating for Mitzi to create color kits of.
- Mitzi Meyers brought two finished chenille scarves that she had started a long time ago.
- Khara Oxier-Mori showed a handspun rug.
- Cynthia Brandt passed around her second double weave effort and a coat.

Tour de Fleece

- Jinks Hunter presented Nancy Alzola with the TdF Traveling Award, and Anne Ogilvie provided a history of the TdF annual event.

Today's program is Double Weave by Mary Berent. Meeting adjourned at 12:26PM.

❖ Respectfully submitted by Dyan Lay, Secretary



Affiliate Programs

Windmill Crest Farms
11136 Smith Ave
Nampa, Idaho 83651

Windmill Crest Farms is supporting our Guild by contributing 5% of the retail cost back to our Guild for every Schacht product purchased by our members. Contact Karla Herre directly at 210-241-1107 or windmillcrestfarms@gmail.com.



Guild Affiliate Program
Handweavers Guild of
Boise Valley

Coupon Code:
2025hwgbv

Use this code on our website to save
5% on your order &
earn 5% for your guild!



www.LunaticFringeYarns.com

(800) 483-8749

The **WOOLERY**®
Your Fiber Journey Starts Here!

Our Guild is now part of The Woolery's Guild Reward Program! The Woolery offers an easy way for our members to support our Guild by purchasing through our unique shopping link. Our Guild will receive 5% back from the total order value when you use the link below.

This is a great way to earn money and support the Guild by doing things you would already be doing: buying yarn, supplies, books, etc.!

Buying link: <https://woolery.com?aff=440>

