

# Connecting Threads

Handweavers Guild of Boise Valley  
December, 2007



## December Program: Christmas Luncheon and Ornament Exchange

We hope you have been working on your handcrafted ornament for the Christmas Exchange this year. Remember to bring it with you to the luncheon. You can use any medium you want to make your ornament. (woven, beaded, felted, painted, you pick!) Wrap it like a gift without a name on it. We will draw numbers to select the order in which participants will either choose a package to unwrap, or pick one of the beautiful creations that have already been opened. The ornaments in the exchange were incredible last year. They were stitched, felted, beaded, clay, woven, knitted, and lace, just to name a few. We have such a talented group! This exchange is a lot of fun so be sure to come prepared to participate. We will have an afternoon full of fun and sharing.

Also, bring your favorite dish for the potluck luncheon. We will enjoy sharing the meal with one another in the best Holiday Spirit.

## Calendar of Events

- December 1, 2007 - COE Study Group  
Moxie Java, 1124 Vista, Boise  
9:30 a.m.
- December 1, 2007 - Meeting - **Christmas Luncheon**  
At the home of Penny Schraufnagel  
2312 Pendelton, Boise  
11:30 a.m.
- December 13, 2007 - Spinning Study Group  
At the home of Maralyn Larson  
345 East Spinosa Dr., Meridian  
6:30-8:30 p.m.
- January 5, 2007 - Guild Meeting - Adelman House  
"Let's Talk Twill" - Julie Gerrard
- January 19, 20, & 21 - Color-and-Weave -  
Weaving Intensive

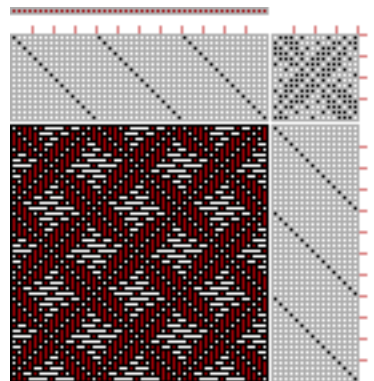


## January Program

In January Julie Gerrard will be giving the program. Her topic is Twill so mark your calendars!

### Let's Talk Twill

Twill is such a versatile weave structure. I thought it would be fun to explore it with the group. So...bring your handwoven twills and come to the meeting on January 5 to talk TWILL.



Julie Gerrard

If you aren't able to attend the January meeting but would like to share your handwoven twills, please bring them to the December meeting. I would be happy to share them with the group.



## Guild Meeting Minutes

November 3, 2007

The meeting was called to order by President, Marlene Bean. Members present were Al Hayden, Penny Schraufnagel, Cindy Schafer, Pat Ann, Mary Berent, Mary Ireland, Marita Turner, Irene Chandler, Shirley Sterling, Rebecca Winter, Julie Gerrard, Maralyn Larson, Kathy McGowen, Ivy DeHart, Louise Douglas, Nancy Swenson, Mitzi Meyers, and Lynn Ruggles.

The officers reports were given. Mary Berent had no specific report, but did talk about the upcoming Christmas party. A volunteer was asked for to be hostess for the Christmas party/meeting and Penny offered to have it at her house. There will be a brief meeting, Christmas potluck and ornament exchange for any who wish to participate. The Christmas meeting/party will be held on December 1<sup>st</sup> at 11:30 am.

The upcoming Karin Selk workshop was also discussed. Workshop payments are due by the December 1 meeting. At that time, if there are any openings, those on the waiting list will be notified.

The Secretary's minutes were approved as read. Cindy gave the treasurer report. At this time there are thirty one (31) members paid, and a total of 67 members listed on the membership list from last year. There have been four new member checks received. Cindy also gave a preliminary report on the October "Linda Kubic" workshop. Expenses were covered for the workshop. There are still a couple of things to figure before the final tally can be given.

Marlene brought up the Challenge for next year's "Museum Comes to Life" and Penny volunteered to Chair the planning committee with Julie and Marlene helping.

Study Group reports: Spinning Group - there was no meeting help for October, but there

will be a November meeting at Maralyn's clubhouse and the December meeting will be held at Maralyn's house.

COE - did not meet this month but will be held in December. The place has yet to be determined, but will be in the newsletter.

Al talked about the upcoming Color-&-Weave Intensive to be held in January (19, 20, 21) Mary Berent has arranged a location for that workshop. There will be flyers available for workshop sign up, both on the website and from Al.

Marlene mentioned that the new quilting store in Nampa, Fabrique, has a classroom space.



## Study Group News

### Spinning Study Group

Spinning Study group will meet Dec 13, from 6:30-8:30 p.m. at Maralyn Larson's home in Meridian. Contact Lynn Ruggles for info or directions, 375-9172.

### Weaving Study Group

At this time there are no plans for a weaving study group. If you would like to become involved and study some aspect of weaving, contact Julie Gerrard (342-8562).

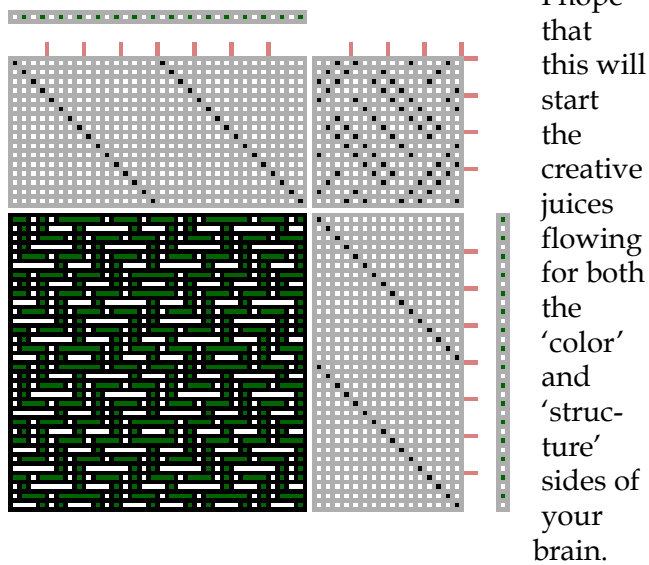
### Certificate of Excellence (COE) Study Group

The COE (Certificate of Excellence) Study group is scheduled to meet December 1, before the regular guild meeting. Contact Vila or Mary for more information.



## Intensive 2008 -- Color-and-Weave January 19,20 & 21

In exploring my meager library, I have found some thoughtful lines to share about color-and-weave. From Bonnie Inouye's Exploring Multishaft Design come these quotes:  
"color-and-weave effects may be explored using any weave structure"  
"...the effects do not depend on color but instead on value. It refers to patterns made when two or more different values (that is, light, dark, and medium value) are used in a repeating sequence in the warp or the weft or both."



Plan to attend the Intensive to share with and learn from each other.  
Al Hayden



### Classifieds

Would like to trade 34 brand new four-inch cardboard spools for 34 three and one-half inch spools. They are too large for my spool rack.  
Contact Cindy S. (375-6736)



## Ramblings from the President

The holiday season is upon us! I imagine many of you are busily making those hand-crafted articles to give to friends and loved ones.

Being a fiber person, I find myself drawn in by anything fiber related and find myself pulled in several directions. I admire those people who can commit to just one fiber art and resist all others. You all know someone who is a weaver and can resist spinning or visa versa. I am one of those who amasses all the tools, books, and materials of that other fiber art to fill yet another closet, but aren't we lucky to have those choices? I am thankful that I don't have to weave or spin, but can choose to do it.

I hope you find time this holiday season to relax and play with fiber, but most of all, to be thankful for friends and family, and our lifestyle of choices.

Happy Holidays!

Marlene



## Deciphering the Color Code



For December we decided the color challenge would be **RED**, plus any metallic color - gold, silver or copper. Bring your examples of these colors that complement the Holiday Season.



### Guild Officers and Chairs

President: Marlene Bean 337-3631  
Vice-Presidents: Mary Berent 939-8906  
Vila Cox 323-7736  
Secretary: Mary Ireland  
Treasurer: Cindy Schafer 375-6736  
Librarian: Cindy Schafer 375-6736  
Newsletter Editor: Rebecca Winter 895-0975  
Weaving Study Group: Julie Gerrard 342-8562  
Spinning Study Group: Lynn Ruggles 375-9172  
COE Study Group: Mary Berent 939-8906  
Vila Cox 323-7736

### Websites

<http://www.handweavers-guild-boise.org>  
<http://my.calendars.net/handweavers/>

Welcome to the Handweavers Guild of Boise Valley, Inc. The guild has been sharing its craft with the community for 35 years. Our stated purpose is to "carry on, study and foster the arts and crafts of handweaving, spinning and fiber arts." The Guild meets from September through June on the first Saturday of the month. Generally, meetings are held at 11:30 a.m. at the Adelman House at the Idaho Historical Museum in Boise. Look frequently for details in this newsletter, or please contact any member for inspiration, or for answers to your questions.

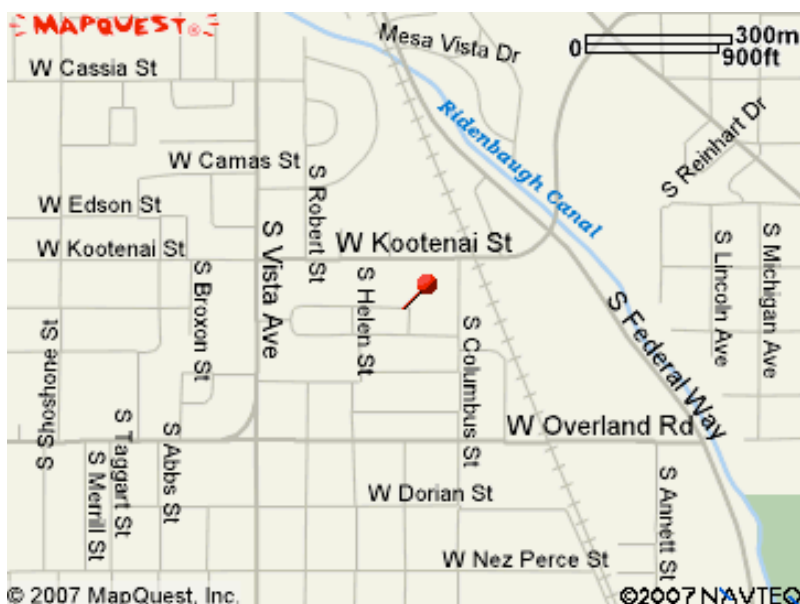


### Be the Among the First to Receive Your Newsletter - Get It Electronically

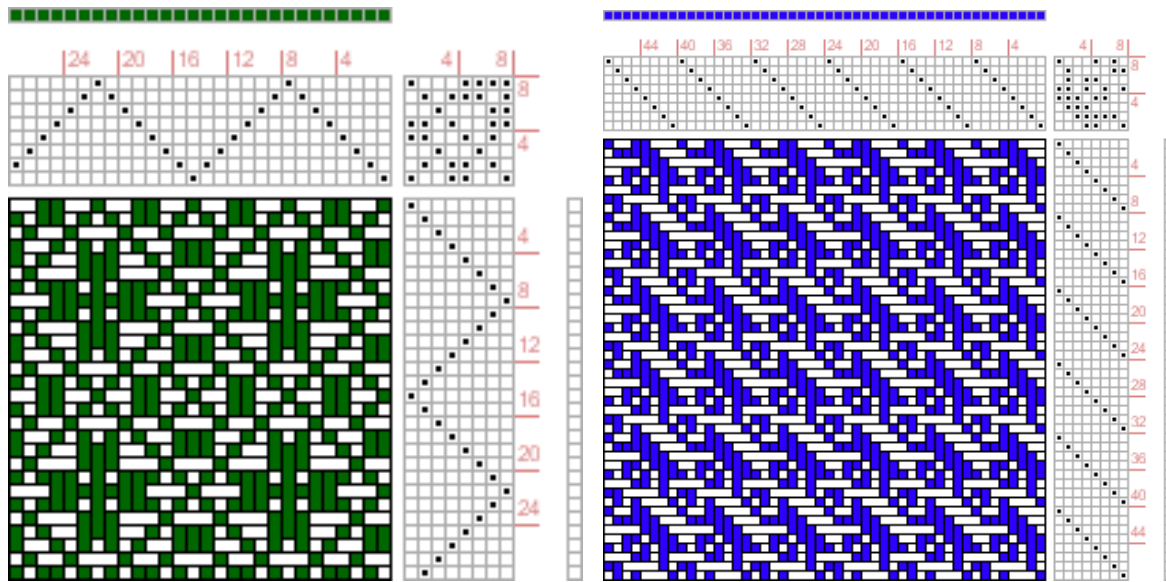
Contact Vila at [vila@handweavers-guild-boise.org](mailto:vila@handweavers-guild-boise.org) to be added to the list of those receiving their Newsletter electronically. Or call her at 323-7736

## Directions to Penny's for the Christmas Luncheon:

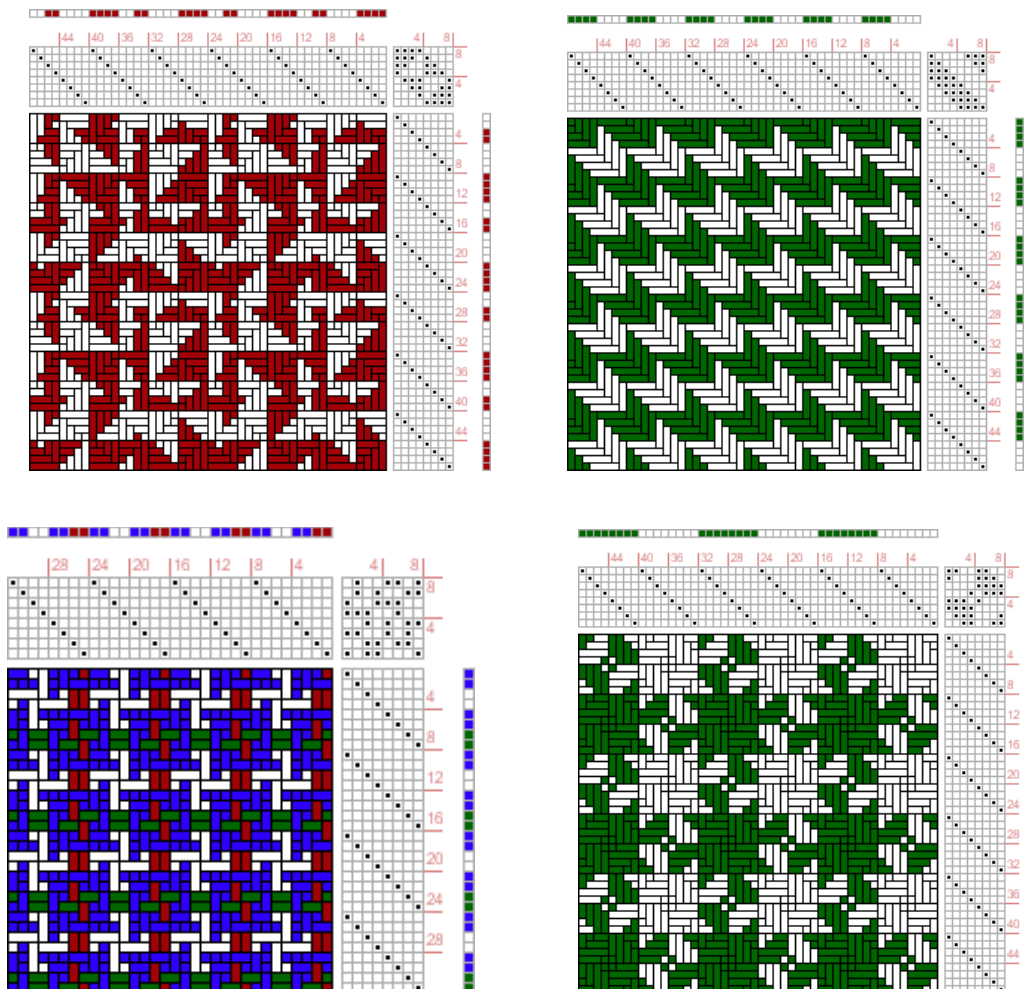
Turn East onto Pendleton one block south of Kootenai from Vista. The turn onto Pendleton is near the washer woman on Vista. Go to 2312 Pendleton. Penny's phone number is 342-1288.



## Twills for Inspiration:



## Color-and-Weave Drafts for Inspiration:



Connecting Threads  
PO Box 6258  
Boise ID 83707

The monthly newsletter from the



handweavers guild of boise valley, inc.

## Newsletter Highlights and Please Remembers:

Bring a wrapped handcrafted ornament to the December Luncheon for the exchange.  
Color Code: Red, plus metallics.  
Dues are \$25.00. Come join us!!

# Seasons Greetings

