

# Connecting Threads

Handweavers Guild of Boise Valley  
February, 2012

## February Program: Plain Weave, by Julie Gerrard

If you think plain weave is boring--THINK AGAIN!! There are so many variations with plain weave, including color variations, warp faced fabrics, weft faced fabrics, textured fabrics, as well as elegant and simple balanced plain weave. We will talk about the weave structure, and there will be lots of examples and great ideas for you to translate into your own projects. If you have samples of plain weave you would like to share, please bring them to the meeting.

## Calendar of Events

- February 4, 2012 - COE Study Group  
Moxie Java, 1122 S Vista, Boise  
9:30 to 11:00 am
- February 4, 2012 - Guild Meeting  
Boise Historical Museum at the Adelman House  
11:30 am - Business Meeting  
12:30 am - Social time  
1:00 p.m. Program, **Plain Weave**, by Julie Gerrard
- Jan. 26 & Feb. 23, 2012 - Sock/Knitting Study Group  
The Home of Melanie Smith  
6:30 pm - 8:30 pm
- February 7 & 21, 2012 - Bobbin Lace Study Group  
Rebecca's Studio House, 1012 E 3rd St, Meridian  
6:30 pm - 8:30 pm
- February 9, 2012 - Spinning Study Group  
Maralyn Larson's Clubhouse  
6:30 - 8:30pm
- February 20, 2012 - Day Weaving Study Group  
The Home of Vila Cox  
1:30 pm
- March 3, 2012 - Next Regular Guild Meeting  
March 23, 24 & 25, 2012 - Spinning Workshop

## Spring Workshop - Reminder

There is only ONE space left for the Celia Quinn workshop, March 23, 24 and 25, on Comprehensive Spinning. The cost of the workshop is \$135 plus a \$45 materials fee for members and an additional \$25 for non-members. Contact Mary Berent 939-8906 for more info.

## Ramblings of the President

Hello, my weaver friends. The president's brain feels empty tonight, but I will push on. It has been on my mind lately how men and women are so different - generally speaking of course. Men can sit and do nothing, like fishing it seems, much easier than women...or at least this woman. I get bored fishing in about 5 minutes, but I can read, spin, knit, or weave for quite some time and be happy. Guess it is all about what you are interested in. I hope you are all having a lovely January/February and weaving or spinning to your heart's content.

❖ Happy weaving and spinning!!! Mitzi



## From the Library

We are missing the 2007-2008 Spin-Off Magazine binder. If anyone has it, please let me know, so I can enter their name on the library card.

◆ Librarian, Judy Talent

## Monthly Sample Exchange

This month's sample is the another installment of the "Comparative" results of different fibers using MX Fiber Reactive dyes. This month's sample fiber is Tencel in 10/2 weight.

The range of tints go from 0.25 Depth of Shade up to 15 Depth of Shade (DOS).

Tencel is the fiber that was used for the "Delightful Dyers" study group.

◆ Al Hayden

## Advertisement: Loom For Sale

45" 4-harness hand crafted counter balanced loom with 6 treadles in great condition. Includes shuttles and other small accessories. \$600. Call Margaret Christensen at 939-7162.

## Policy FYI: Cost of Newsletter Ads

Guild members may place classified advertisements in the Newsletter free of charge. Non Guild member individuals may place classified advertisements in the Newsletter for the sale of personal equipment or supplies for \$5.00 per month per ad. Advertisements for commercial business purposes in the Newsletter will be charged a fee of \$10.00 per space of 4 1/4 by 5 1/2 inches per month. Commercial businesses may also wish to develop and print their own fliers that can be added to the collation of the Newsletter. The fee for the guild placing these in the Newsletter is \$15.00. The business should print enough so that one can be placed in each newsletter for the hard copies being mailed. Electronic copy should also be sent, to be placed into the electronic version of the Newsletter.

## Study Group News

### ♥ Spinning Study Group

Spinning Study Group will meet on **February 9** from 6:30-8:30pm at Maralyn Larson's clubhouse in Meridian. Color this month is Winter White. Join us for a scintillating selection of spinning stories, sagas, spells and spiels. Non-spinners welcome.



### ♥ Certificate of Excellence (COE) Study Group

The COE Study Group will meet **February 4** at the Moxie Java on Vista near the corner of Kootenai. All are welcomed. Contact Mary Berent for info: 939-8906.

### ♥ Day Weaving Study Group

We will meet on **February 20** at the home of Vila Cox. Call Rebecca at 859-2822, for more information.



### ♥ Bobbin Lace Study Group

We have decided to meet the first and third Tuesdays of every month. In **February** it will be on the **7th** and the **21st**, at Rebecca's Studio House at 6:30 pm. Call Vila for information, 323-7736



### ♥ Sock/Knitting Study Group



Yes, you are seeing it right. There has been some interest in adding knitting to the sock group. So if you need help with any knitting project, sock included, you are welcome to come on **Jan. 26th and Feb. 23**. We meet from 6:30 to 8:30 at Melanie's home, 523 S. Pond St Boise. If you have any questions, please call Melanie Smith at 608-0101 (cell) or 385-0085.

## Guild Board Meeting Minutes

Minutes of 1/7/2012

Moxie Java on Vista Ave.

Present: Irene Chandler, Al Hayden, Mitzi Meyers, Melanie Smith, Mary Berent and Rena Lute

President Mitzi Meyers opens the meeting:

Vice Presidents Mary and Rena report that they still need 3 more people to register for the spinning workshop to break even. They are going to open it up to the public and other spinning groups.

Treasurers report handed out: we have \$4,184.48. A \$30.00 check was returned to Al by the state as it was unnecessary to issue them the \$30.00. Melanie gave Al instructions to shred the check. The only time we need to send the \$30.00 would be if we changed our club name. We now have a tax number.

Mitzi reported that in order to get another post office box key issued to us we need the permission of 1 person. Mitzi will check on that. She feels we need to modify who has the key power and appoint someone who is going to be around forever.

Membership Chairman: Irene Chandler submitted a bill for mailing the rest of the directories. It was discussed about who was to be collecting the fees for the ads placed in the directories and newsletters. The result of the discussion is that Melanie will check to make sure they have all paid for this year. Then next year the Membership Chairman should take in the money, because they are the one putting the information together for the directory. Melanie asked if the guild would publish the cost of the ads in our newsletter.

No report from Challenge, ANWG or the Librarian.

People have been asking if the directory could be added to our yahoo group web site. Mitzi will check with Vila to make sure it can be kept private if added.

A member brought it to Mitzi to have a Face book page for the guild. With Renee being administrator and Mitzi being backup but Renee has had her life turned upside down and Mitzi doesn't think she can do it now. Janet Stanger volunteered to put a guild face book page together if Renee could not.

Al has gotten all our upcoming event dates approved with the museum through November. Al also reports that there is no water out in pioneer village for the next 2 months.

Volunteers for the Nominating Committee are Mary Berent, Janet Stanger and Melanie Smith.

Meeting Adjourned for regular meeting at the museum.

◆ Respectfully submitted, Janet Stanger, Secretary

## Guild Meeting Minutes

Regular Meeting 1/7/2012

Adelmann House

Present: Janet Stanger, Al Hayden, Pat Ann, Julie Gerrard, Lynn Ruggles, Judy Tallent, Maralyn Larson, Marita Turner, Irene Chandler, Caroline Dade, Carol Freeman, Rena Lute, Mary Berent, Mitzi Meyers, Melanie Smith, Vila Cox, Cindy Schafer, Jean Zaske, Christine Bagwell, Nancy Swenson, Ivy DeHart.

Vice President Mary Berent reports that there is not much to report. All the programs are set. There are only 5 openings left in the spinning work shop and it is now open to the public. The February program will be Julie Gerrard on Plain Weave.

Treasurers report: Melanie announced That the guild now has a tax Id number. Our current bank balance is \$4,184.48.

Secretary and Membership Chairman had nothing to report. Pat Ann brought in a catalog for our librarian to look through to see if there is anything for the guild.

It was reported by Mitzi that Rebecca Winter is asking for someone to take over the sample box. Al Hayden volunteered to take over.

Julie Gerrard is chairman of the Annual Challenge we have in September. The theme is Color Explosion.

Mitzi Meyers announced the Nomination Committee is headed by Mary Berent. Also on the committee are Janet Stanger and Melanie Smith.

Show and Tell: Mary Berent showed a skein of hand spun yarn, Rena showed a handmade chenille scarf. Ivy DeHart showed a woven baby blanket that used 30 harnesses to make. Lynn Ruggles showed a huck Lace weaving, Irene Chandler a quilt block, and Christine yarn. Julie Gerrard brought some giveaway things, latch hook rug frames and tools, some quilting materials. Vila Cox showed a blanket and Mitzi Meyers showed some fingerless gloves. She also reported that she got a new triangle loom for Christmas.

Vila reports that the Weaving Intensive starts at 9am on January 14<sup>th</sup>, 15<sup>th</sup> and 16<sup>th</sup>. She still needs some people's drafts.

Study groups: Due to the intensive there will be no Day Weaving Study Group. Bobbin Lace meets at 6:30 on the 1<sup>st</sup> and 3<sup>rd</sup> Tuesdays. The meeting is held at Rebecca's Meridian studio. Spinning group is the 2<sup>nd</sup> Thursday at Maralyn's club house. Sock study group is the last Thursday and the next COE is in February at the Moxie Java on Vista.

It was announced that Lynn Ruggles had an article published in the Pieceworks magazine.

Al Hayden won the gold bag filled with a variety of cotton yarns from Marita Turner.

Meeting adjourned for the program on Furoshiki Wrapping.

◆ Respectfully submitted, Janet Stanger, Secretary

## Officers and Chairs

President: Mitzi Meyers 340-9775

Vice-presidents: Mary Berent 939-8906

Rena Lute 891-2111.

Secretary: Janet Stanger 377-0746

Treasurer: Melanie Smith home 385-0085 cell  
608-0101

Membership Officer: Irene Chandler 318-8182

Librarian: Judy Tallent 208-615-1857

Newsletter Editor: Rebecca Winter 859-2822

Sample Exchange: Al Hayden

Weaving Intensive Study Group: Vila Cox 323-7736

Spinning Study Group and Weaving Intensive Study

Group: Lynn Ruggles 375-9172

COE Study Group: Mary Berent 939-8906

Day Weaving Study Group: Rebecca Winter  
859-2822

Bobbin Lace Study Group: Vila Cox 323-7736

Web Master: Vila Cox 323-7736

Past President: Cynthia Newman (541) 523-2451

## Website

<http://www.handweavers-guild-boise.org>



## **13<sup>th</sup> Annual -- GARDEN VALLEY FIBER FREAKS -- WINTER BLUES SPIN-IN**

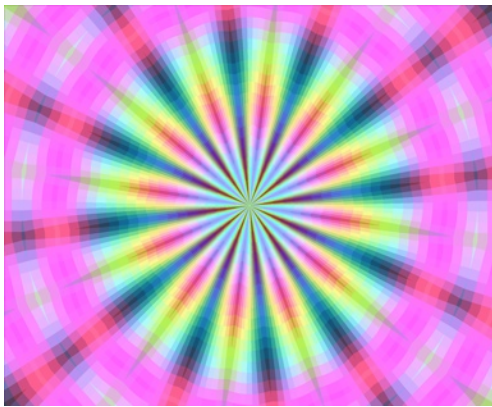
Sunday, February 12, 2012 Crouch Community Hall  
10:00 am – 3:00 pm

Oil your wheel and get out your fiber! It's almost time to spin away the winter blues!

The annual Garden Valley Fiber Freaks Winter Blues Spin-in will be held Sunday, February 12, 2012 at the Crouch Community Hall, 10:00 am – 3:00 pm. All spinners and drop-ins are welcome. Please bring a sack lunch and finger food dish to share (no crock-pots, no cooking allowed). For your convenience, soup, sandwiches and finger food items may be purchased at the nearby Garden Valley Market, Wild Bill's Coffee and Bistro, and/or the Longhorn Restaurant. Also bring a fiber related, wrapped white elephant gift. Bring your show and tell items. And bring news of other workshops, spin-ins and fiber conferences.

There is a \$5 donation for spinners, \$15 donation for vendors. Coffee, tea and hot chocolate will be provided.

Directions: From Boise take Hwy 55 north to Banks (19 miles north of Horseshoe Bend), turn right onto Hwy 17 (Banks-Lowman Road) towards Loman. Take a left turn (9 miles up river) into the town of Crouch. Bear right when you get to the center of town. The Community Hall is next to the Trading Post and across the street from the Merc. Come early and have breakfast at one of the local restaurants. Enjoy the snow (if there is any!) and the lovely ride up, but drive carefully. For further information call Jo 462-3797, Kathy 462-8092, Georgianna 462-3709 or Margaret 462-8014.



### 2012 Challenge

## Color Explosion!!!

Use at least 3 colors for each item

Select a color harmony for each item

All entries must be entirely your own and created since Sept., 2011

#### Four Categories:

1. Flat Handwoven (yardage, hemmed or fringed items such as scarves, dish towels, shawls).
2. Handspun Skeins (80% handspun) (fibers must be identified)
3. Finished Items for Handspun (50% handspun) (fibers must be identified)
4. Fiber Arts (3-dimensional items, felted items, baskets, garments)

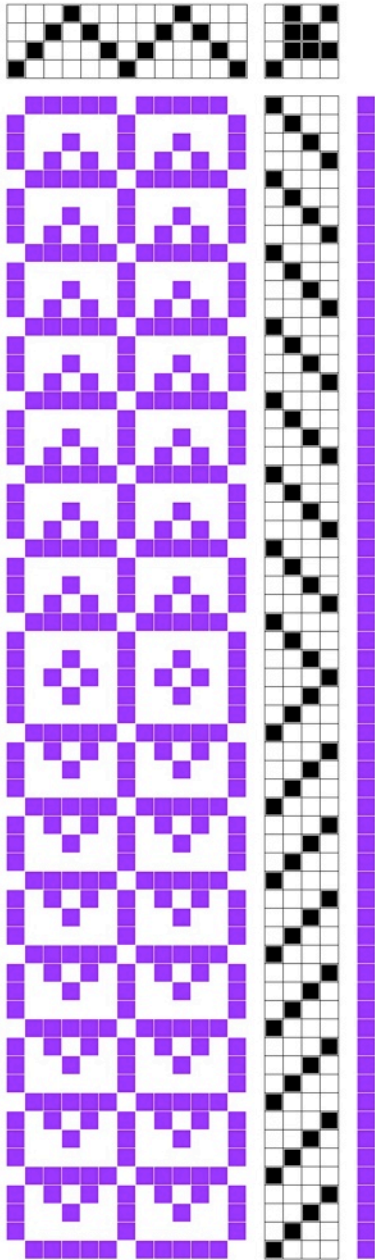
Entry fee - \$5 first entry, \$2 for second, \$2 for third or more entries for a maximum of \$9.

A card will be attached to each entry after entries are submitted. Please provide the following information with each entry:

1. Color harmony chosen
2. Weave structure for handwoven entries
3. Fiber content for all entries

## Draft Inspiration:

Here is the next in the series of drafts from Al Hayden. He wove bookmarks on a four harness point threading, using different tie-ups and treadlings. Then he dyed the bookmarks. The yarn is silk.



Detail



Connecting Threads  
PO Box 6258  
Boise ID 83707

The monthly newsletter from the



handweavers guild of boise valley, inc.

### Newsletter Highlights and Please Remembers:

February Program: Plain Weave

Sign Up for Celia Quinn, One space left

Garden Valley Fiber Freaks - Winter Blues Spin-In, February 12

