

# Connecting Threads

Handweavers Guild of Boise Valley - January, 2026

## January Program: Mini Workshops

We are excited to offer the ever-popular Mini Workshops again this year. There is still time to sign up, although sign-up is not absolutely required. It does assist the presenters if they know how many attendees to plan for. If you are not able to sign up for a mini workshop prior to the meeting, we will do our best to find a spot for you in your preferred mini workshop. Email Robin Conrads to sign up. Your choices are:

- Kumihimo 12-Cord Flat Braid, with Esther Kleinkauf
- 5-Hole Pamphlet Stitch Mini Journal, with Rebecca Winter
- Handspinning Art Yarn; The Basics, with Khara Oxier-Mori
- Plarn: What, Why and How to Save the Planet Through Plastics, with Cyn Brandt

Look for the details and supply lists coming soon via email.

❖ Lisa Baker & Robin Conrads, Vice Presidents



## Calendar of Events

### **Regular Meeting:**

January 3, 2026 ~ 11:30 a.m.

#### **Program ~ Mini-Workshops**

At the Boise First Congregational Church of Christ,  
2201 Woodlawn, Boise, in the Banquet Room

Next meeting - February 7, 2026

### **Study Groups:**

December 30, 2025 ~ Garment Study Group

10:30 a.m.~At the home of Julie Gerrard

January 8, 2026 ~Beginning Weaving Study Group

6:00 p.m.~ At the home of Sheri Bittner

January 11, 2026 ~ Paper Study Group

1:30 p.m.~At the home of Rebecca Winter

Change of dates - See details under Study Groups

January 11, 2026 ~Rigid Heddle Study Group

2:00 p.m to 4:00 p.m.~ At the U of I classroom,

1902 E Chicago St, Caldwell

January 13, 2026 ~ Lace Study Group

10:00 a.m. ~ At the home of Raelene Viste

January 14, 2026 ~ Spinning Study Group

11 a.m. to 2 p.m.~ At Rubaiyat Bookstore

314 S 6th Ave, in Caldwell

January 15, 2025 ~ Tapestry Study Group

10:30 a.m.~At the home of Julie Gerrard

January, 2026 ~ Day Weaving Study Group

We will meet only at the Intensive this month.

Every Thursday ~ Thursday Fiber Friends Zoom

2:00 p.m. ~ Meets on Zoom

### **Weaving Intensive Study Group:**

January 17, 18 & 19, 2026 ~ Topic: Doubleweave

### **Learn to Weave Weekend ~ Study Group:**

April 18 & 19, 2026

### **Workshops:**

**Understanding Profile Drafting**, by Deb Essen. June 19-21, 2026, at the Fairview Terrace Community Center, Meridian, ID.

**Color-And-Weave: A Design Technique**, by Rebecca Winter. Date is still to be finalized, but likely in Mid-September or Mid-October

~ See more information later in the Newsletter for these special events. ~

To find Member Contact Information, Log-In to your [groups.io](https://groups.io) account and look in "Files" for the Membership Directory.

The link to the BoiseGuildGroup is [HERE](#).

## January Weaving Intensive

This is a reminder that we are accepting your registration for the Weaving Intensive now. Find the information about the Intensive later in this Newsletter. Register by paying the \$35.00 fee - by either sending it to Cindy Griewe or by paying online at [THIS LINK](#). Scroll all the way to the bottom of the page. There is an additional small fee for the convenience of paying electronically.

Each person's weaving plan will be included in our Intensive Binders, so participants will know how to weave when they arrive at a loom. We also encourage you to tell a little bit about what you learned. Your plans are due on January 3, 2026, and please send them to me. If you have questions about what to include or how to write the plan, I am happy to assist. I'm looking forward to a fun doubleweave experience.

❖ Rebecca Winter, Intensive Co-chair



## Upcoming Programs & a Workshop - Plan Ahead

### **February, 2026 ~ "Souped-Up" Show and Tell**

This is your opportunity to tell and show about your project - how you developed it, the steps you've taken, samples made, and results of your work. If you have a project that needs just a bit more time to explain, this is your opportunity. And as we all know, sometimes a project just doesn't work out. But those "malfunctions" can lead to new knowledge and inspiration for the next project. The program in February is structured to give each presenter additional time to describe the journey taken and to show the results. If you would like to present your project at "Souped-Up Show and Tell," please email Lisa or Robin.

### **March, 2026 ~ Different Kinds of Weaving Yarns**

This program will include tips for using many of the different kinds of yarns, care and handling, finishing techniques, and "What's the Difference Between 8/2 and 2/8?" We have some of our most experienced weavers, who have graciously volunteered to be on our panel to present information about weaving yarns. So bring your questions about all things yarn to the March meeting.

### **April, 2026 ~ Triangular Weaving by Mitzi Meyers.**

More information to come in next month's newsletter about this presentation by Mitzi.

### **May, 2026 ~ Yarn and Equipment Sale**

### **June, 2026 ~ Summer Potluck and Kick Off to the Summer with Weaving Travel Tips**

~~~~~

### **Workshop ~ Coming in the Fall: "Color-and-Weave: A Design Technique," by Rebecca Winter**

Plan now for this offering from one of our Master Weavers. She tells us Color-and-Weave is not the same as "color in weaving." The workshop will offer an explanation for this statement and an exploration of the vast possibilities on rigid heddle or shaft looms, with anywhere from 2 to 8 shafts. And, because this is a round robin workshop, you will have the opportunity to weave a sample on each loom offered. Dates, location, and further information available soon.

♦ Lisa Baker & Robin Conrads, Vice Presidents

## President's Letter

### **HAPPY NEW YEAR!**

It's a new year and lots of new experiences are waiting for us! What will you choose to do with the guild this year?

- Perhaps you are going to join in the Doubleweave Intensive Study over Martin Luther King weekend? Hopefully, you are getting your handouts ready and your loom warped!
- Perhaps you will stop by that weekend at the University of Idaho R&E Center in Caldwell to see what we have on our looms?
- Perhaps you are going to bring your spinning wheel to the Rubaiyat Bookstore in Caldwell on the second Wednesday. You never know who might be there spinning.
- Or perhaps you will join the Fiber Friends group via zoom on Thursdays at 2pm. Maybe share a yarn or two while you are chatting virtually...(fiber humor)!

However you choose to indulge your love of fiber crafts, I hope it brings you joy! I look forward to seeing all of you at the guild meeting on January 3. The meeting will be held at our usual location: the Boise First Congregational Church of Christ. Doors open at 11 and the meeting starts at 11:30. This month's program will be the Mini Workshops! A huge thank you to our members who have volunteered to teach us new things! Come join us at the meeting and learn something new!

Thank you to everyone who participated in the Presidents Challenge! It was amazing to see the variety of napkins and to learn more about each other! When I dreamed up the challenge this year, I wanted an activity that would help us connect with each other. And thanks to all of you, that was completely accomplished! Well done everyone!

♦ Katzy Luhring, President

## From Your Editor

It is time for me to pass the torch as Editor of your Newsletter. Would you like to help keep our Guild up to date with what is going on? Do you have skills in desktop publishing that you could share? We need you! I am happy to work with the next Editor to make a smooth transition and to pass on my years of experience. Please let Katzy know if you are interested.

♦ Rebecca Winter, Newsletter Editor





## President's Challenge Results

The President's Challenge, of weaving napkins for one another, for the December meeting was wildly successful. The exchange included a questionnaire so members could learn more about who they drew to make a napkin for. The questions included favorite colors, fibers, or other favorites; what you would eat while using your napkin; three items to put into a time capsule; and a super power. It was a perfect set of questions to elicit good thoughts about the person while making their napkin.

Jenne Schiffhauer sent this quote through [groups.io](https://groups.io) after the meeting, and it speaks to the heart of the exchange and to the spirit of the meeting.

"Yesterday we had our annual potluck with a new twist: a President's Challenge to do a napkin exchange. To say it was the best meeting ever is an understatement. It was so wonderful to learn details about our guild members and to see how just a few facts for each person could turn in to so many woven napkins. Everyone's personalities shone through. I want to personally thank every member that showed up yesterday to celebrate the individuals of our guild. It was a day filled with laughter, tears, and a true sense of community. Happy Holidays everyone!"

Twenty two members, who wove napkins for fellow guild members, were documented, albeit a bit on the fly. If someone was missed, please let us know so we can add you to the list. They were - Katzy Luhring, Connie Griffin, Cynthia Brandt, Jeannie Phillips, Hanna Meinikheim, Julia Withers, Jinks Hunter, Jenne Schiffhauer, Dyan Lay, Kelly Sandusky, Cindy Griewe, Tessa Stone, Suzi Todd, Christie Farrin, Kari Lawton, Robin Conrads, Mary Berent, Lisa Baker, Tom Thompson, Anne Oglevie, Amber Hendry, and Rebecca Winter.

Enjoy these photos, with napkins too numerous to identify. They include knitting, weaving, dyeing, sewing, and embroidery. The gathering of napkins for a photo opportunity was also on the fly, and we hope we have most napkins pictured. What a beautiful group of fiber art.

❖ Rebecca Winter, Historian











## Study Groups:

### Spinning Study Group

The January Study Group will be meeting on the 14th from 11-2 at the Rubaiyat. We always look forward to new faces and skills of ALL LEVELS!

❖ Jeannie Phillips, Study Group Chair

### Tapestry Study Group

Our next meeting will be on Thursday, January 15 at 11 am at Julie Gerard's house.

❖ Mary Donato, Acting Study Group Chair

### Lace Study Group

The Lace Study group will meet Tuesday, January 13<sup>th</sup> from 10am to 12pm at Raelene Viste's.

❖ Raelene Viste, Study Group Chair

### Beginning Weaving Study Group

The beginning weaving group will meet at Sheri Bittner's home on January 8, at 6 pm. The topic for this month is "Record Keeping."

❖ Sherry Bittner, the Very Happy Beginning Study Group Chair

### Day Weaving Study Group

The Day Weaving Group will not be meeting in January. This was decided because the date would be the day following the January Intensive Workshop. We will be meeting next in February, at our usual time on the third Tuesday.

❖ Greta Ankeny, Study Group Chair

### Rigid Heddle Study Group

January Meeting ~ Sun, Jan 11, 2026 ~ 2-4pm.

At the U of I classroom, 1902 E Chicago St, Caldwell

Topics: Finishing Techniques & Hints from your favorite RH book or video

We will be sending a reminder 1 week prior to meeting and include zoom info for any who are unable to attend in person.

❖ Jinks Hunter & Jenne Schiffhauer

### Paper Study Group

We look forward to another great year of playing with paper.

Because of the holidays and the Weaving Intensive we have changed the date of our next meeting. We plan to meet next on January 11, 2026. Bring your Show and Tell to share, and plan to share any new study information you have found.

❖ Rebecca Winter, Study Group Chair

### Garment Study Group

The Garment study group will meet on Tuesday December 30th at 10.30am at the home of Julie Gerrard. Everyone is welcome to attend.

❖ Anne Oglevie, Study Group Chair

### Thursday Fiber Friends

We are an informal group who meet at 2pm every Thursday via zoom. We work on our projects, help each other with project questions and chat about whatever comes up. We feel free to stay the whole time (and make some progress on that project) or just pop in for a bit of time for a quick catch up when busy with other stuff. We're very flexible - please feel welcome to join us.

❖ Jinks Hunter, Study Group Chair





## LEARN TO WEAVE WEEKEND 2026

**SAVE THE DATE:** APRIL 18-19, 2026

**LOCATION:** Fairview Terrace Community Center

**CONTACTS:** Cindy Griewe or Robin Conrads

**REGISTRATION:** to open in January 2026

**LIMITED** to 14 learner-participants (with approx. 6 mentors also invited)

### Description

- Bring your loom, shuttle, and weaving tools to this 2-day weekend of learning to experience the basics of drafts, warping, and weaving.
- Basic instruction, discussion, and mentor assistance will help you better understand the art of weaving.
- Cost TBD, but will probably be around \$40.00.

### Specifics

- Rigid heddle or shaft looms (table or floor) can be used for this weaving experience. Some looms are available on loan from the guild on a first come first serve basis.
- Warp will be provided to create approximately 6 dishcloths in either twill or plain weave.

### Officers & Guild Board

- President - Katzy Luhning
- Vice President - Robin Conrads
- Vice President - Lisa Baker
- Secretary - Dyan Lay
- Treasurer - Kelly Sandusky
- Membership Officer - Cindy Griewe
- Past President - Mary Berent

### Chairs

- Librarian - Sally Johnston
- Web Master - Robin Conrads
- Equipment - Vila Cox
- Newsletter Editor - Rebecca Winter
- Pat Ann Fund Administrator - Anne Oglevie
- Sample Exchange - Christie Farrin
- Outreach Committee - Janet Stanger
- Social Media - Dyan Lay
- ANWG Representative - Connie Griffin
- Spinning Study Group - Jeannie Phillips
- 2026 Weaving Intensive Study Group
  - \* Kelly Sandusky
  - \* Rebecca Winter
  - \* Chelsea Grigsby
  - \* Cindy Griewe
- Day Weaving Study Group - Greta Ankeny
- Beginning Weaving Study Group - Sherry Bittner
- Rigid Heddle Study Group - Jinks Hunter & Jenne Schiffhauer
- Garment Study Group - Anne Oglevie
- Lace Study Group - Raelene Viste
- Thursday Fiber Friends Zoom - Jinks Hunter
- Tapestry Study Group - Jaimie Landry
- Paper Study Group - Rebecca Winter
- Tour de Fleece - Jinks Hunter
- Church of Christ Contact Person - Vila Cox
- Bowmont Church Contact Person - Rebecca Winter
- Fairview Terrace Community Center Contact People - Rebecca Winter & Cindy Griewe
- Post Office Box Name Holder - Mitzi Meyers
- Mail Collector - Mitzi Meyers

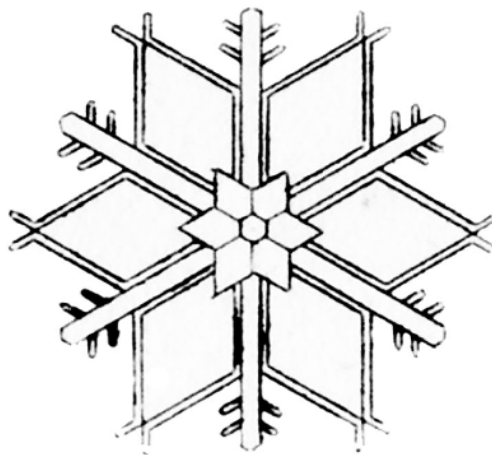
### Website

<http://www.handweavers-guild-boise.org>

**Facebook** [Click Here for Link](#)

### Mailing Address

PO Box 6258, Boise, ID 83707



## 2026 Weaving Intensive Study Group

# Doubleweave

A Weaving Retreat, with Weaving Presented by Each Participant

Saturday, Sunday, and Monday - **January 17, 18 & 19, 2026**

9 AM to 5 PM - Location: University of Idaho R&E Center

1902 E. Chicago St., Caldwell, ID 83605

Fee - \$35.00 - A Great Value!



- This is our usual “teacherless” workshop-style event. We each have the opportunity to be the expert in our chosen area of study related to Doubleweave.
- Choose a favorite type of Doubleweave to share with the group.
- Study your topic and create a sample warp, which demonstrates what you have learned.
- Choose any yarn that is appropriate for the draft and design.
- Provide all the materials needed to weave all the samples on your loom. Calculate your warp length by the number of possible samples needed, which is the number of participants in the Intensive. Generally, if you are planning about 6-inch long samples, 4 to 5 yards will suffice. Warp width is best at about 6 inches, or a width needed to show your design.
- Mentors are available prior to the workshop to guide you in your study or help you prepare!
- This is a round robin workshop. Each person moves from loom to loom weaving samples on the looms of other participants. Weave as many as you wish.
- At the beginning of the Intensive each participant will present their Doubleweave study to the group, and give instructions for weaving. Plan for the presentations to be about 8 to 10 minutes. If you need help with presenting, the mentors are available to assist and reassure.
- You may wish to weave your own sample ahead of time so you can teach from experience how the sample works. An additional possibility is to cut your sample from the loom and retie. This gives you the opportunity to show finishing methods applicable to the sample. These steps are optional.
- We recognize, and also value, the camaraderie and social aspect of the Intensive. We envision this opportunity to have great potential for experimentation and learning. Just think of the benefit of three days of discussion and exploration with others of like mind.
- We ask you to submit printable project plans and draft sheets (electronic or hard copy). Each participant will receive a binder containing all of the plan sheets and drafts.
  - ~ **Please include all information required for reproducing this cloth.** This includes 6 things - threading, tie-up, treadling, yarn, sett, and colorway.
  - ~ We need more than just a .wif file.
  - ~ Additional notes about what you learned are also wonderful to have. There are Weaving Record Sheets available in the Library and on the Guild website [HERE](#).
  - ~ Send all your weaving record information in printable form to Rebecca Winter by **January 3, 2026**.
- Bring your loom warped and ready to go. Bring yarn & equipment, such as shuttles & bobbins, to weave samples on your loom. Bring waste yarn to frame the samples you weave & labels to identify them. Bring scissors or other necessary tools. Bring basic loom tools & anything needed for possible repairs.

### The Fine Print:

- ★ The workshop is open to guild members. If non-members wish to attend the Intensive, we invite them to join the guild.
- ★ There are Guild Looms available. No rent is assessed for Guild Workshops or Intensives.
- ★ Keep this information available, as it is the only pre-Intensive information you will receive.
- ★ Your payment of the fee is your confirmation for participation in this event.
- ★ The Guild will accept cancellations with a refund through January 3, 2026. After this date cancellations will be considered on an individual basis.
- ★ Bring sack lunches, drinks, snacks to share as you wish.

Return the following information with your fee to Kelly Sandusky or Cindy Griewe. Or you may wish to pay online.

Find the online registration page on the Guild Public Website [HERE](#).

Name \_\_\_\_\_ Phone \_\_\_\_\_

Email \_\_\_\_\_ Fee amount included \$ \_\_\_\_\_



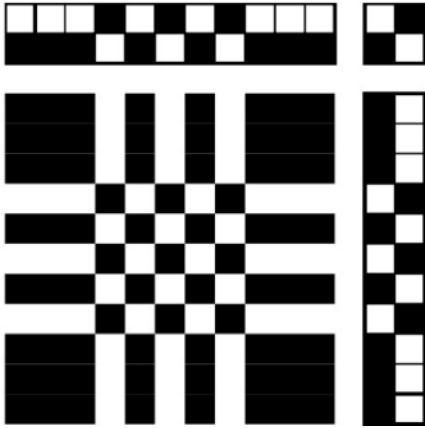
# UNDERSTANDING PROFILE DRAFTS

with Deb Essen

June 19, 20, 21 - 2026

Fairview Terrace Community Center – Meridian, ID

Have you seen drafts like this and wondered how you use it to create fabric?



Learn how to use profile drafts as a powerful weaving design tool! We will learn how to translate a profile draft into thread by thread drafts for several weave structures.

We will also discuss what kind of weave structures can use profile drafts and what structures can't. Samples in round robin format, so everyone will go home with a sample of at least 5 weave structures discussed in class and have a chance to play with them.

The workshop is open to members of the Handweavers Guild of Boise Valley and will be held June 19 – 21, 2026, at the Fairview Terrace Community Center in Meridian. If you would like to attend the workshop but are not a member of the Guild; memberships are just \$35.00 <https://www.handweavers-guild-boise.org/>.

The cost of the workshop will be determined by the number of attendees, but should be in the realm of \$150.00 to \$175.00. For comparison, workshops like this that are offered at conferences such as ANWG usually charge ~ \$400.00.

Students will bring their table or floor loom un-warped, because students will be warping looms in class (students must be comfortable warping their looms independently). Pre-class instructions will be sent to attendees in May. The class is geared toward advanced beginners through intermediate weavers.

If you have any questions about the workshop, please contact Lisa Baker or Robin Conrads: email addresses are available through the Guild's groups.io site.



**Deb Essen** lives, weaves, and runs her business dje handwovens in the Bitterroot Valley, nestled in the Rocky Mountains of western Montana. In 2004, Deb achieved the Certificate of Excellence in Handweaving- Level 1 through the Handweaver's Guild of America. In 2011 she was inducted to the Montana Circle of American Masters in Folk and Traditional Art. Her book, Easy Weaving With Supplemental Warps, was published originally by Interweave Press in 2016. In 2022, the book was re-released as an expanded revised edition, with more projects and weave structures, by Schiffer Publishing. She has recorded five weaving videos, available through Long Thread Media, ranging from supplemental warps to profile drafting and has written multiple feature articles for Handwoven and Little Looms magazines. Deb is passionate about teaching about the wonders of weaving and teaches at shops, guilds, regional and national conferences and festivals.



## Board Meeting Minutes ~ December 6, 2025

### Members present:

President – Katzy Luhring  
Vice President – Lisa Baker  
Vice President – Robin Conrads  
Treasurer – Kelly Sandusky

Membership Officer – Cindy Griewe  
Past President – Mary Berent  
Rebecca Winter, Newsletter Editor

### President's Report

- Katzy started the meeting by saying how excited she was for the President's Challenge Napkin Exchange at the meeting later that day. She explained that each participant would talk about the person they chose and present their napkin. Then that person would get up and do the same.

### Programs

- Robin will explain the mini workshops for the January program and pass the sign-up sheet. Before the January meeting she will send emails to all participants to remind them what they signed up for and what they might need to bring. There was discussion of guild equipment, roving, and possibly loaned equipment for the Art Yarn mini workshop. The board suggested that Robin and Lisa determine where each person teaching the workshops should set up before the meeting starts.
- Lisa will explain the February program "Show Us Your Stuff" which will be an extended show-and-tell for larger projects. They estimate 5 or 6 large presentations, and also the standard show and tell. They will start a sign-up sheet at the January meeting.
- The March program will be on different yarns, and there was discussion of which types might be similar and presented together. The focus will be what the yarn is made from, and how the yarn behaves in a weaving, knitting or other fiber arts application. Lisa has a list of presenters and their yarn types.

### Workshops

- Lisa reported the Deb Essen workshop on Profile Drafts is moving along. Members continue to sign up and there is a lot of time before the final number and final cost can be calculated.
- Rebecca said she would not be able to be the liaison at Fairview Terrace for the Learn to Weave Weekend in April. Cindy will take those duties. The board decided if a liaison was not taking a given workshop, that a board member should be present.
- Lisa brought up a possible workshop for rigid heddle weavers. Patty Huffer was suggested as a possible teacher. Rebecca also would be interested in teaching a Color-and-Weave workshop that would be open to all weavers, possibly in September or October 2026.

### Treasurer

- Kelly reported the balances in the Pat Ann fund, Equipment fund, and affiliate credit or funds received. The board discussed spending affiliate funds on two 15" rigid heddle looms and a set of various sized heddles for each loom. Vila would need to be part of that process.
- Kelly paid the Handweavers Guild of America dues for two years. She also paid the church banquet room rental through June of 2026 and paid the 4<sup>th</sup> quarter 2025 library rent to the church.

### Membership

- Cindy reported that the guild has 122 members. There was discussion about groups.io free limit of 100. Cindy will check if we have more than 100 active members. The guild has never been billed if the number went over 100. Rebecca will research the cost if we do have to get a paid account. She also explained some of the data limits and the board discussed a possible manager for that service.

### Policies

- Rebecca has worked very hard to make necessary changes to the policies and job descriptions of the guild. She provided the redacted and new forms in the Board subgroup files area of groups.io for board members to read. She also provided a document detailing which documents need to be updated and what the changes are. The board will meet again by Zoom and discuss the final changes before presenting the updates for the membership to vote on. A document will be built online showing the changes, and there will be a section for comments that ends two weeks before the members vote at a regular meeting.
- Kelly requested that the actual price for dues and mailed newsletters not be put in the policies, so that the document wouldn't have to change if the prices change.
- Mary reminded the board that policies are good, but they are guidelines and not rules. We should make them flexible.

### ANWG

- Rebecca reported that the ANWG board should know the theme and colors by their January meeting. The name tag project has been paused until that information is available.

### Newsletter



- Rebecca requested that a new person be assigned the duties of newsletter editor. She is willing to train someone. That is usually a President appointed position approved by the board.

The meeting was adjourned at 2:15PM.

❖ Respectfully submitted by Robin Conrads, Vice President

## Regular Meeting Minutes ~ December 6, 2025

Call To Order at 11:34AM

- Present were 32 attendees: Katzy Luhning, Dyan Lay, Veronique Hager, Rebecca Winter, Robin Conrads, Mary Berent, Kari Lawton, Hanna Meinikheim, Julie Gerrard, Alyssa Bangs, Cindy Griewe, Amber Hendry, Jenné Schiffhauer, Julia Withers, Nancy Swenson, Tracey Stringer, Cynthia Brandt, Jeannie Phillips and husband, Jinks Hunter, Nancy Alzola, Jean Zaske, Katé Holistine, Christie Farrin, Mitzi Meyers, Paulette Esposito, Marita Turner, Zena Zaleski, Lisa Baker, Kelly Sandusky, Connie Griffin, Suzi Todd and Tessa Stone.

Business

- President – Katzy Luhning
  - Katzy welcomed everyone, and members introduced themselves by name favorite winter plant.
- Vice Presidents – Lisa Baker and Robin Conrads
  - Robin spoke of the January program of mini workshops; sign-up sheet available and some require supplies.
    - ◆ Esther Kleinkauf will be teaching Kumihimo, participants do not need to bring anything.
    - ◆ Rebecca Winter will teach a five-hole pamphlet stitch book and will provide a list of supplies to bring.
    - ◆ Khara Oxier-Mori will teach art yarn, so bring any strong fiber.
    - ◆ Cynthia Brandt will be teaching how to weave with plarn.
  - Lisa explained the February program of an extended show-and-tell; they are looking for 6-7 volunteers.
  - She also discussed the June workshop by Deb Essen. The sign-up sheet and flyer are now available as well as offered in the newsletter. Payment will be accepted in January.
  - Rebecca Winter is working out the logistics of her upcoming workshop as well as Khara Oxier-Mori who is also working out the details for a workshop she will be offering.
  - The Learn to Weave study group workshop is scheduled for April.
    - ◆ Participants bring an empty loom, and the workshop teaches the rest. Cindy Griewe asked for mentors to participate.
- Membership – Cindy Griewe
  - Cindy announced the Guild has 122 members.
- Treasurer – Kelly Sandusky
  - Nothing to report.
- Secretary – Dyan Lay
  - Dyan reminded everyone present to sign the sign-in sheet.
- Study Groups
  - Spinning – Jeannie Phillips: This group meets at the Rubaiyat on December 10<sup>th</sup> from 11AM to 2PM.
  - Rigid Heddle – Jinks Hunter and Jenné Schiffhauer: This group meets monthly the second Sunday.
  - Paper – Rebecca Winter: This group meets the third Sunday at 1:30PM at Rebecca's house. The next meeting is January 11.
  - Fiber Friends – Jinks Hunter and Mitzi Meyers: This group meets via Zoom every Thursday and is a great opportunity to sit with friends, work on a project and chat.
  - Tapestry – Kelly Sandusky: The group is meeting at her house on Thursday the 18<sup>th</sup>.
  - Day Weaving – Kelly Sandusky: The group is meeting at Kelly's house on Tuesday the 16<sup>th</sup>.
  - Cindy Griewe mentioned there are two study groups and workshops for rigid heddles.
  - Intensive – Rebecca Winter: This study group meets MLK weekend in January 2026, and members can sign up now. The topic is Double Weave, and the weekend will be held at the U of I Research Center.
    - ◆ Preparation is necessary, and this will be a round robin weaving situation.
    - ◆ Participants need to get Rebecca their binder information by January 3rd at the latest.
    - ◆ Let Rebecca know what kind of double weave as well as the threading, tie up, treadling, sett, yarn and color way.

President's Challenge

- Everyone had great fun as 22 members exchanged napkins.

Show and Tell

- Rebecca Winter showed extra napkins, an article in the latest Handwoven, her Weaving with Paper entries, and a wall hanging made for the Intensive using a four-shaft, shadow weave, two-layer pattern.



- Mitzi Meyers gave away some crochet yarn and a perfect fold double weave blanket.
- Lisa Baker showed a table runner in summer and winter as well as two runners of Christmas lights.
- Connie Griffin presented several napkins.
- Hanna Meinikheim knitted ornamental balls, a summer and winter scarf and a paper weaving project.
- Zena Zaleski brought her second weaving project, five twill napkins and a mystery shawl a la Stephen West.
- Veronique Hager wore a knitted dragon scarf.
- Alyssa Bangs brought a sprang project to show-and-tell.
- Robin Conrad made a summer and winter placemat as well as the softest “ugly scarf” in a double weave, log cabin pattern.
- Jeannie Phillips’ tell was that she has lost 80 pounds this year.

Today’s program is Annual December Potluck. Meeting adjourned at 1:10PM.

♦ Respectfully submitted by Dyan Lay, Secretary



## Affiliate Programs

Windmill Crest Farms  
11136 Smith Ave  
Nampa, Idaho 83651

Windmill Crest Farms is supporting our Guild by contributing 5% of the retail cost back to our Guild for every Schacht product purchased by our members. Contact Karla Herre directly at 210-241-1107 or [windmillcrestfarms@gmail.com](mailto:windmillcrestfarms@gmail.com).



Guild Affiliate Program  
Handweavers Guild of  
Boise Valley

Coupon Code:  
**2025hwgbv**

Use this code on our website to save  
5% on your order &  
earn 5% for your guild!



[www.LunaticFringeYarns.com](http://www.LunaticFringeYarns.com)  
(800) 483-8749

The **WOOLERY**®  
Your Fiber Journey Starts Here!

Our Guild is now part of The Woolery’s Guild Reward Program! The Woolery offers an easy way for our members to support our Guild by purchasing through our unique shopping link. Our Guild will receive 5% back from the total order value when you use the link below.

This is a great way to earn money and support the Guild by doing things you would already be doing: buying yarn, supplies, books, etc.!

Buying link: <https://woolery.com?aff=440>

