

Connecting Threads

Handweavers Guild of Boise Valley
January, 2008

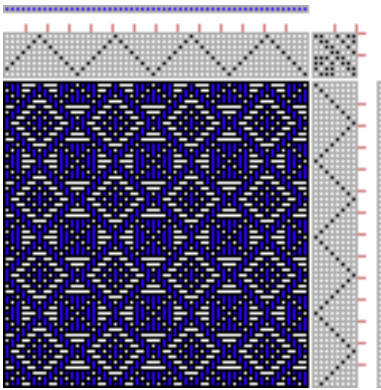
January Program

In January Julie Gerrard will be giving the program. Her topic is Twill so mark your calendars!

Let's Talk Twill

Twill is such a versatile weave structure. I thought it would be fun to explore it with the group. So...bring your handwoven twills and come to the meeting on January 5 to talk TWILL. If you aren't able to attend the January meeting but would like to share your handwoven twills, please bring them to the December meeting. I would be happy to share them with the group.

Julie Gerrard



Calendar of Events

- January 5, 2008 - Guild Meeting - Adelman House
11:30 am - Business Meeting
12 noon - Social time
- Library browsing
1:00 p.m. Program - "Let's Talk Twill"
- Julie Gerrard
- January 10, 2008 - Spinning Study Group
We will meet at Maralyn Larson's clubhouse from 6:30-8:30 pm.
- January 19, 20, & 21, 2008 - Color-and-Weave - Weaving Intensive (See details, pg. 3)
- February 2, 2008 - Guild Meeting - Adelman House
"Sewing with Handwoven Fabric Scraps" - Rebecca Winter

February Program: Sewing with Handwoven Fabric Scraps

In February Rebecca Winter will be presenting the program. In an effort to continue the learning from the recent workshop, in which participants learned how to sew a garment from handwoven fabric, we will talk about how to use some of those left over scraps. The possibilities are endless.

Plan to bring any project you have made using your handwoven scraps.

Guild Meeting Minutes

The December 1st regular meeting and Christmas luncheon was held at the home of Penny Schraufnagel. President Marlene Bean called the meeting to order with the following members present: Julie Gerrard, Ann Oglevie, Pat Ann, Jean Zaske, Shirley Sterling, Marlene Bean, Mitzi Meyers, Penny Schraufnagel, Al Hayden, Carolyn Dade, Maralyn Larsen, Marita Turner, Mary Ireland, CeeCee Stricklin, Ivy DeHart, Vila Cox, Rebecca Winter, and Lynn Ruggles. Minutes were approved and seconded. The Treasurer's report was put off until the January

(Minutes Continued from page 1)
meeting, as well as the policy report. Penny was asked about the Museum Comes to Life Committee and she will put together a meeting.

Study Groups were reported on. The Spin Study group will hold it's monthly meeting at Maralyn Larson's house with a Dessert potluck and voluntary fiber exchange on December 13.

Under New Business, Al talked about the Weaving Intensive to be held on January 19 - 21st, 2008. It will be a study of Color-and-Weave. There is still room for those wanting to join the fun and your drafts are due to Al by the January meeting. The location for the intensive will be in the January newsletter. Call Al if you have any questions or to reserve your spot.

Julie Gerrard reported that she had received a thank you from the Museum for our participation in Museum Comes to Life. The dates for next year's MCTL will be Saturday, September 27, 2008. She also talked about the decline in our membership. Marlene stated that she had sent out reminders to members about dues and since that time several had renewed their membership. Julie also mentioned that she would be giving the January program - on Twills, and asked that everyone bring their twill samples to the meeting.

The Vice Presidents' reports were then given. Vila reported on the March workshop - given by Karin Selk. It will be held on Saturday, Sunday and Monday, March 15 - 17, 2008. The waiting list for those wanting a space will be opened after the December meeting. Those on the list will be contacted if there is space available by one of the Vice Presidents.

Rebecca Winter will be giving the February program. It will be about sewing with your handwoven scraps. Plan on attending, as it sounds like a great subject. In March Carolyn Dade will be talking to us about Tapestry.

Ann Oglevie talked to the group a bit about her recent visit to South Africa and their overwhelming unemployment. She talked about trying to get a non profit organization going to start the women there with spinning and weaving as a way for them to have an income.

Jean Zaske did our monthly color study - this month it was red and metallics. There were a number of great examples displayed and discussed. Next month's color study will be True Blue, with shades of blue to black.

Vila brought the Gold bag from Kathy McGowen and Rebecca won it and the lovely yarn it contained.

Show and Tell was then given. Al showed his double weave bags that he had made for Christmas presents. Ivy brought several Norwegian weaving from her recent trip. Carolyn Dade brought her table runner with laid in leaves. Vila brought her "furrowed scarves and her coverlet from the Challenge this summer. Ann Oglevie and Pat Ann showed their new felted bags purchased from the 5th street market. Pat also had felted slippers she had purchased as well. The meeting was then adjourned and a wonderful luncheon and ornament exchange was held. See the photo of all the ornaments below.



[Study Group News](#)

Spinning Study Group

The Spinning Study group will meet on January 10 at Maralyn Larson's clubhouse from 6:30-8:30 pm. Contact Lynn Ruggles for info or directions, 375-9172.

FUZZ will be hosting a Spin Day on January 12 from 10-2. Bring your wheel and sit and spin for a few hours.

Weaving Study Group

At this time there are no plans for a weaving study group. If you would like to become involved and study some aspect of weaving, contact Julie Gerrard (342-8562).

Certificate of Excellence (COE) Study Group

The COE (Certificate of Excellence) Study group is scheduled to meet February 2, before the regular guild meeting. Contact Vila or Mary for more information.

Coming to a Loom Near You:

"Weaving Intensive: A Study of the Color-And-Weave Effect"

When? --- January 19, 20, and 21 2008
What? --- This is the latest in the Guild's series of teacherless workshops
Where? --- IDAHY Credit Union Adm. Offices
7615 West Riverside, Boise/Garden City
Turn East onto Riverside from Glenwood,
Just South of D&B Supply
Will you be there? --- All you need is a draft (Color-and-Weave Effect), a warped loom, \$30.00 (for a three day experience), and a desire to expand your weaving horizon.

"Color-and-Weave transforms familiar structures into intricate patterns through alternating dark and light yarns in both warp and weft. Such a pattern looks quite different from the weave structure (which is usually presented with a warp of one color and a weft of another) and cannot be predicted from the color order used in the warp and weft --- something entirely different appears."

Margaret B. Windeknecht, Handwoven Jan/Feb 1991 p52.

See A1 to sign up and join the fun and learning.



Deciphering the Color Code



We had a few very interesting combinations of red and metallic at the December guild meeting - including metallic red thread!

For January the hunt is on for true blue hue (not blue greens or blue violets) and shades of true blue hue - that means adding black. Let's add to that and look for true blue hue mixed with grey too. What have you woven, spun, collected in these colors?

Bring them to the January guild meeting and we'll try to beat the winter blues with color!

Ramblings from the President

It's that time of the year when there's just not enough time! The e-mails have piled up **again** from the two weaving lists I belong to - Weaving Digest and Weave Tech. I can learn a lot from them - if I have the time to read them! Several well known instructors whom I admire like Bonnie Inouye and Laura Fry generously share their wisdom with others.

Today I learned a new term for a condition I get from my own loom, aptly called "AVL rash". It refers to the abrasions I get from the sandpaper beam when weaving a narrow warp if I neglect to cover the sandpaper first. I have two towels to use to cover the beam, but they often roll off during the weaving. It was interesting to read in the e-mails how other weavers solved this problem, from wrapping saran wrap around the beam, "taping" towels to the beam or purchasing the "soft cloth" sold by AVL.

The discussion threads are archived so you can search for advice from past topics - all for free - if you have the time!

The time for our intensive workshop is fast approaching. I'd encourage any to attend who might be hesitant to take the plunge. These workshops are a relaxing and fun way to learn, without the pressure and expense of an outside teacher. This is an excellent opportunity for all levels of weavers.

After the holiday decorations are all put away, Al needs a copy of the color-and-weave draft that you plan to use for the workshop. I've even found the perfect and easy solution to picking a draft, using one of Rebecca's notebooks found in our library of her specialized color-and-weave study for her COE project. There are so many neat samples to look through, along with the drafts and setts, it is impossible not to find several to try. If not understanding color-and-weave and not having a draft is stopping you from joining in on the workshop, let me know and you can eeny, meeny, miny, mo through the notebook - right after me!

See you in January!
Marlene



Guild Officers and Chairs

President: Marlene Bean 337-3631
Vice-Presidents: Mary Berent 939-8906
Vila Cox 323-7736
Secretary: Mary Ireland
Treasurer: Cindy Schafer 375-6736
Librarian: Cindy Schafer 375-6736
Newsletter Editor: Rebecca Winter 895-0975
Weaving Study Group: Julie Gerrard 342-8562
Spinning Study Group: Lynn Ruggles 375-9172
COE Study Group: Mary Berent 939-8906
Vila Cox 323-7736

Websites

<http://www.handweavers-guild-boise.org>
<http://my.calendars.net/handweavers/>



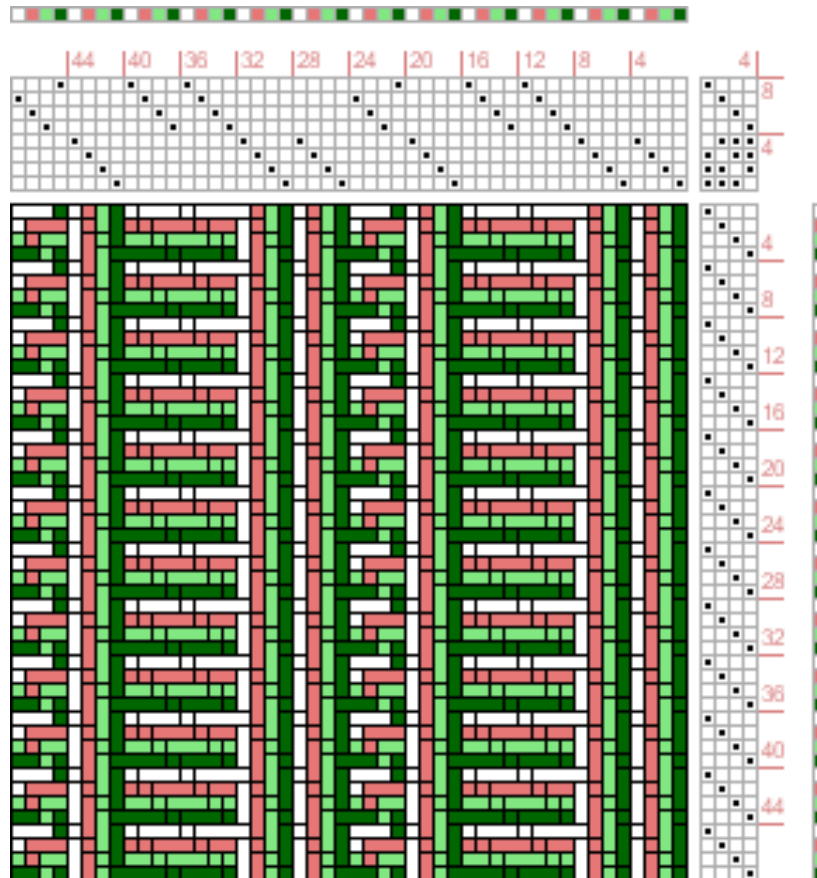
Welcome to the Handweavers Guild of Boise Valley, Inc. The guild has been sharing its craft with the community for 35 years. Our stated purpose is to “carry on, study and foster the arts and crafts of handweaving, spinning and fiber arts.” The Guild meets from September through June on the first Saturday of the month. Generally, meetings are held at 11:30 a.m. at the Adelman House at the Idaho Historical Museum in Boise. Look frequently for details in this newsletter, or please contact any member for inspiration, or for answers to your questions.

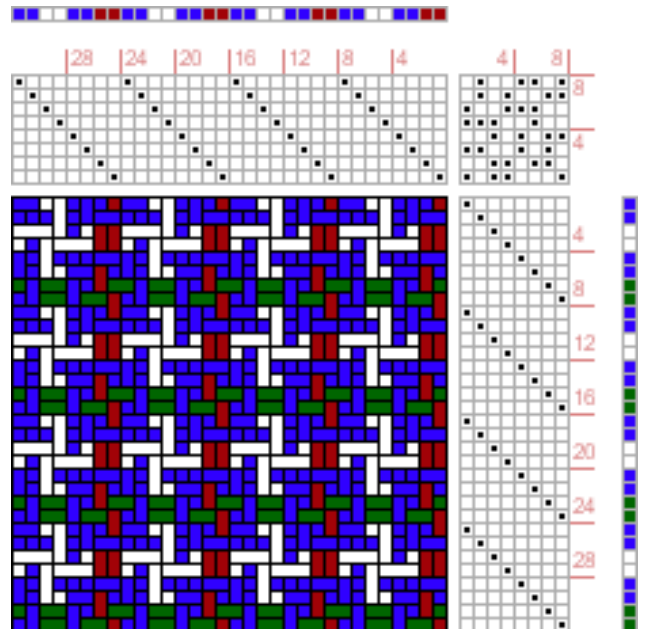
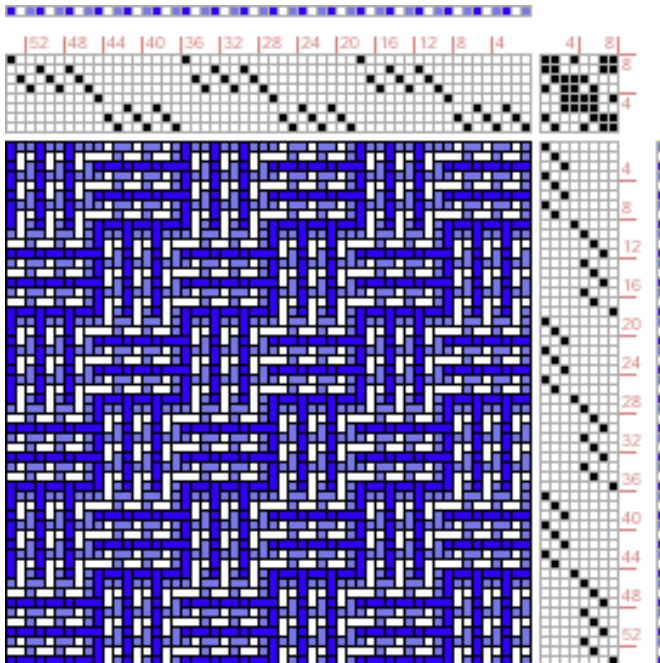
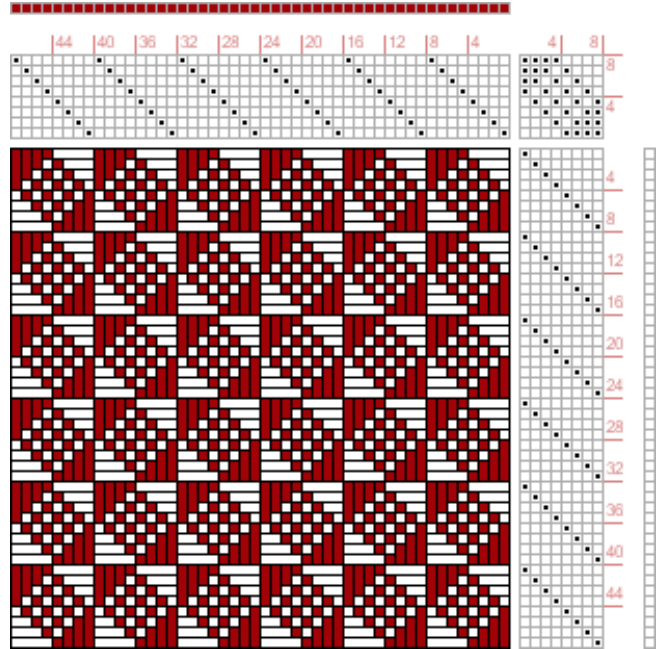
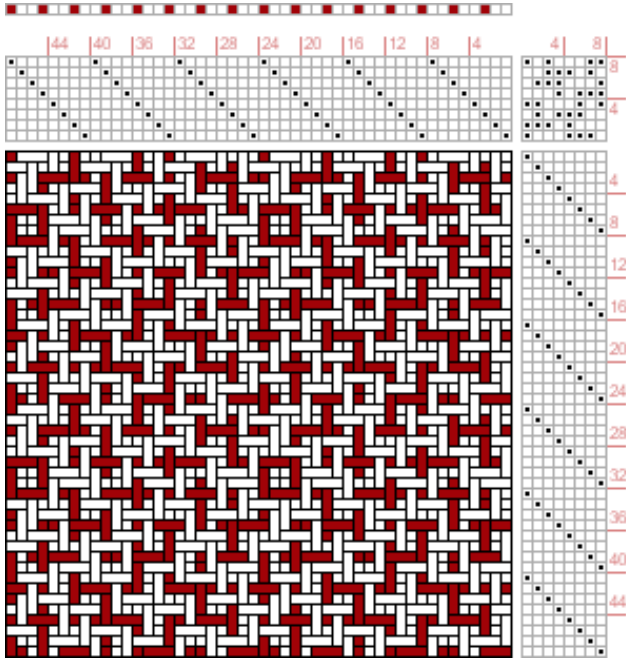


[Be the Among the First to Receive Your Newsletter - Get It Electronically](#)

Contact Vila at vila@handweavers-guild-boise.org to be added to the list of those receiving their Newsletter electronically. Or call her at 323-7736

Drafts for Inspiration:





Connecting Threads
PO Box 6258
Boise ID 83707

The monthly newsletter from the



handweavers guild of boise valley, inc.

[Newsletter Highlights and Please Remembers:](#)

January Program: Let's Talk Twill

Color Code: True Blue and Shades of True Blue (mixed with black)

Dues are \$25.00. Come join us!!

