

# Connecting Threads

Handweavers Guild of  
Boise Valley

June, 2011

## June Program: Annual Picnic

I am excited to have the guild picnic at my home. Bring something yummy to eat to share, and enjoy the drive out to Sweet.

◆Mitzi Meyers

**Directions:** From Boise go to Horseshoe Bend; go thru town and at the flashing light turn left onto Hwy 52 towards Emmett; go 9 miles (almost to the Triangle Dinner house) and turn Right onto the Sweet Ola Highway; Go 5 miles to the brick mailbox on the right and turn right in and down the hill. 11200 Sweet Ola Highway 584-3116 Hope to see you there!



## Calendar of Events

June 4, 2011 - COE Study Group

The Home of Mitzi Meyers, prior to the Picnic  
10:00 am

June 4, 2011 - Annual Picnic

The Home of Mitzi Meyers  
Look for Directions in this Newsletter  
11:30 am

June 2, 16 & 30, 2011 - Bobbin Lace Study Group

Rebecca's Studio House, 1012 E 3rd St, Meridian  
6:30 pm

June 20, 2011 - Day Weaving Study Group

Rebecca's Studio House  
1:00 pm

Spinning Study Group

Please see the detailed information further on in this Newsletter for Summer Saturday Spinning.

August 27, 2011 - First Meeting for Next Year

◆ All are welcome to all events! ◆



## Dues are Due

**It is that time again.  
Enjoy the Guild Benefits.  
Please pay your dues to Irene Chandler.**

## Workshop - Mark Your Calendars

Celia Quinn will be here March 23-25, 2012 to teach a Comprehensive Spinning Class.

## UFO Program



WOW!! The UFO program really did some good - cleaning out old projects. I know this because almost all

the prizes got awarded and that is GREAT!

Looking forward to seeing the rest of this years finished items. You all inspire me! (Hopefully I will have my one item finished for the picnic.) There will be a special awards ceremony at the June meeting.

◆Mitzi Meyers

## Ramblings of the President

I am smitten with color; so much so, that my heart will race when I see great color combinations. So it has been puzzling to me why I have been dressing in gray lately. In fact, not long ago I professed gray as my least favorite color in the whole wide world. So why would I suddenly be feeling the desire to dress monochromatically up and down the neutral gray scale?

Colors have moved in and out of favor with me, and I think it has much more to do with my state of mind than I care to admit. When I am designing a new warp, where color is the focus, I have been intrigued with the conversations that the colors have with one another. Each color seems to have its own personality. A good basic red usually makes a solid stand, but doesn't say a lot. If the red moves towards orange, well then we are starting to get a lot of talking. And if you put a magenta next to the orange, well they might start talking so much that they are shouting for attention. This is where I have fun. What does the group dynamic feel like if I introduce chartreuse? Oh my goodness. Or a pastel blue, quaking in its boots next to all of the loud talking. Ah, but gather up a bunch of pastels who are either floating around the room, or whispering together in the corner, and now you start to make the orange and magenta nervous. Maybe they should just never be in the same room together. Then you start over with a new group of colors.

The colors will tell you who they want to stand by, and if you want a peaceful group you might want to stick with the colors that hang out next to each other on the color wheel. But if you want a more dynamic conversation, it is fun to mix the group up a bit. There are still certain personalities and colors that just refuse to sit together. You can give in to their demands and separate them, or subtly inch them closer together in hopes of some sort of color reconciliation.

So why am I wearing gray so much? I guess I want to quietly slide into spring without much effort. But when the sun comes out again, any color is fair game.

Take care, and have a colorful summer! I will look forward to seeing you in the Fall.

♣️ Cynthia Newman, President



## Thank you!!

Many thanks to all that have kept me in their thoughts and prayers. I really appreciate the concern you have shown me while I was facing, during, and after surgery.

All things went remarkable well and at my two week review the doctor said I was at the recovery point they want patients to at six weeks. Again, thank you for all.

♣️ Al

## Summer Saturday Spinning

We have lined up 3 fabulous and generous hosts for our Spinning Saturdays this summer. Events are from 10-3, potluck lunch. Bring your wheel, something to spin, and a chair. The hostess will provide drinks (water, lemonade or ice tea). Details are below. If details are lacking, please check the weaving guild website for information: <http://www.handweavers-guild-boise.org> under the Calendar. Also, updates will be posted in the Boise Guild yahoo group (you should have access if you are a guild member).

Please RSVP to the hostess so she will know how many are coming. If there are not enough responses, she has the option to cancel the event.

Our hosts this year are:

♣️ June 18: Cheri Jensen

Cheri lives at 3507 S. Crosspoint Ave. in SE Boise - just down Apple from Timberline High School. You can contact her for more information at:

343-0845 landline

404-2875 cell

[mossjensenrc@gmail.com](mailto:mossjensenrc@gmail.com)

♣️ July 23: Mitzi Meyers

Mitzi lives in Sweet, ID, a short drive west of Horseshoe Bend. Because of her location, she often attracts spinners from far and wide, so you may run into folks that you don't see as often.

Address: 11200 Sweet Ola Hwy, Sweet, ID

208-584-3116 (home)

208-340-9775 (cell)

[warpedweaver@hotmail.com](mailto:warpedweaver@hotmail.com)

♣️ August 20: Joan Sheehan

Joan will be hosting the August event, which will be held at Rebecca Winter's studio house in Meridian.

1012 East Third Street, Meridian

Joan - 208-794-6049 (cell)

[spnrjoan@yahoo.com](mailto:spnrjoan@yahoo.com)



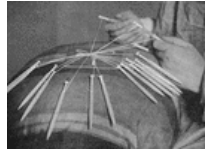
## Study Group News

### ♥ Certificate of Excellence (COE) Study Group

The COE Study Group will be held on **June 4** at 10:00 a.m. at Mitzi Meyer's house in Sweet. **Please note the change of time and place for the month of June.** As usual, everyone is invited, for information call Mary Berent, 939-8906.

### ♥ Bobbin Lace Study Group

This group meets every two weeks on June 2, 16 & 30, 2011 at Rebecca's studio house, 1012 E 3rd St, Meridian, at 6:30 pm. Our group is still growing and planning to meet through the summer. Vila, 323-7736



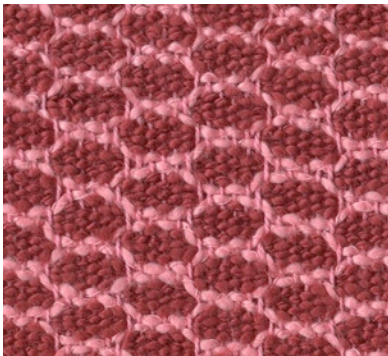
### ♥ Day Weaving Study Group

We will meet on **June 20** at 1 p.m. at the studio home of Rebecca Winter, 1012 E. Third St., Meridian, at 1:00 pm. Call Rebecca at 859-2822, for more information. We are also planning to meet through the summer.



## Monthly Sample Exchange

This month's sample is from Irene Chandler. It is wonderful Honeycomb. Included this month is her draft.



If there are **any members who are unable to attend** regularly, I am happy to send your samples through the mail. Just **send** me a stack of **SASE** (self addressed, stamped envelopes).

Members may pull samples from the Sample Exchange Box at each regular guild meeting. And remember to check your name off the list in each file folder. If you would like to participate or have questions, contact the Sample Chair.

Also, remember, there are samples from last year that are available to anyone toward the back of the box.

◆ Rebecca Winter



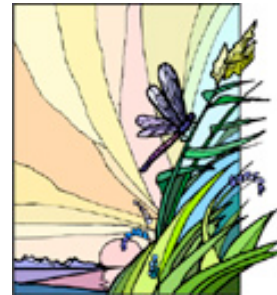
## Guild Meeting Minutes

Minutes of Regular Meeting 5/7/2011

Adleman House

Meeting was called to order by President Cynthia Newman.

Present: Janet Stanger, Irene Chandler, Carol Freeman, Mary Berent, Michelle Armstrong, Cheri Jensen, Julie Gerrard, Pat Ann, Mitzi Meyers, Rebecca Winter, Chris Farrin, Cynthia Newman, Judy Tallent, Melanie Smith, Vila Cox, Lynn Ruggles, Kathy McGowen, Cindy Schafer, Caroline Dade, Nancy Swenson, Joan Sheehan, Marita Turner.



Kathy McGowen reported on the yahoo survey. She had good response but the results were equally spread out and not much help to her. She figures whatever is done half the people will be happy and the others not so happy. She has scheduled a Celia Quinn spinning workshop for the 23<sup>rd</sup>, 24<sup>th</sup> & 25<sup>th</sup> of March. There can be as many as 20 in the class. The cost will depend on how many attend.

Mitzi Meyers: The end of the year picnic will be at Mitzi's house in Sweet, Idaho at 11:30. People usually car pool. The COE meeting will meet at her house as well at 10 AM.

Irene Chandler gave treasurers report: She says not much took place regarding our money. She received \$10.00 for equipment rental and paid out \$50.00 for program fees. There is a balance of \$3,860.73 in checking. Irene is also acting membership chairman in the absence of Penny Schraufnagel. She told the new members to make sure to sign up for the yahoo group and if they had any questions to contact her. Dues are \$25.00 for the year and are due in June. Anyone wishing to pay them early may do so.

Janet Stanger,, Secretary, reported that she took it upon herself to mail out get well cards to Penny Schraufnagel and Al Hayden. It was reported that Penny is doing well but won't be at the next few meetings due to her Chemo therapy. Al Hayden had surgery and it was reported that it seems that his surgery was a success. The doctors feel that they got all the Cancer.

Judy Tallent reported there was no change in the Library.

Melanie Smith reports that the Challenge this year is Natural Fibers. She is asking each study group to do a display. She is going to have her daughters' 4H group teach weaving on cards and will be asking for yarn donations and volunteers to help. She will have signup sheets at the June meeting.

It was brought up that after the June meeting the guild does not meet again until August, usually the last Saturday. The study groups reported that they will be meeting during the summer.



The Day Weaving Study Group will meet on May 16<sup>th</sup> at 1pm at the home of Vila Cox. The Spinning group will meet next Thursday from 6:30 to 8:30. Color blue will be the focus for this month. The meeting will be at Marylyn's. During the summer they meet on Saturdays. Different people volunteer to host and it is usually a pot luck. It is up to the host on what Saturday and where they will meet. Mitzi Meyers volunteered to host July and Joan Sheehan to host August. Lynn Ruggles will send the information out through the yahoo group.

Vila reported that the Bobbin Lace group is not liking the current pattern they are working on but they are having fun. Their next meeting will be May 19<sup>th</sup> at Rebecca Winter's studio home.

The COE Study group meets on the opposite month of the Guild board meeting. They will be meeting in June prior to the guild picnic. It was explained the COE has 4 categories. Weaving, basketry, dying and spinning. Cynthia Newman is working on her COE and Lynn Ruggles is working on her part 2 certificate.

Rebecca Winter reports she is going to the ANWG annual general meeting. She also asked the members to write articles or find article to be published in our newsletter.

Vila Cox reported that our website was down for awhile, but it is up and running now. If anyone is having trouble with the web site please let her know.

UFO'S: Janet Stanger finished her crotched table cloth. Nancy Swenson had spun yarn. Cindy Schafer finished knitting Chemo hats, and Lynn Rubbles finished her Jacket. Gold Bag was won by Janet Stanger it was a variety of yarns. Lynn Ruggles who put the

variety together called it a scarf kit. Also Lynn had brought a book on card weaving that she would give away to the person that came close to the right number. That too went to Janet Stanger.

Show and tell: Rebecca Winter a shawl. Mitzi Meyers bee hive yarn. Mary Berent a sampler. Irene Chandler a braided basket. Kathy McGowen Scarves. Lynn Ruggles, Noroyarn.

Meeting adjourned for Annual Yarn and Equipment sale.

◆ Respectfully submitted, Janet Stanger, Secretary

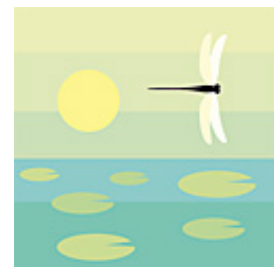
## Board Meeting Minutes

Board Minutes of 5/7/2011, Moxie Java, on Vista

Present: Mary Berent, Cynthia Newman, Vila Cox, Mitzi Meyers, Rebecca Winters, Irene Chandler, Kathy McGowen, Melanie Smith, Janet Stanger.

VP Kathy McGowen: has a Sylvia Quinn spinning workshop set up in March the 23<sup>rd</sup>, 24<sup>th</sup> & 25<sup>th</sup> 2012. Cost will depend on how many attend. The Library in Nampa has already been reserved but someone will have to call in September to make sure it was put on their new calendar. Kathy went over the survey results on who wants what workshops and when to schedule them. The results were pretty much equal across the board and did not help at all.

VP Mitzi Meyers: The end of the year picnic will be at her house. The Coe will also be meeting at her house that day. Mitzi brought cleaning supplies to clean up the Alderman House kitchen. It is dirty after the painters finished their work. Mitzi reports she rented a loom out but it was not sufficient for the project. Things needed reworked and the heddles needed retied. The board decided to give the renter a free months rent.



Secretary Janet reported: that she mailed out get well cards to Penny Schraufnagel and Al Hayden. She also passed out the mail. We received our annual membership from Hand Weavers of America Guild and a request from them asking us to donate money to be a fiber sponsor.

Irene Chambers reported for Membership: That we have 2 new members and also reminded everyone that dues are due in June. Dues are \$25.00.

Rebecca Winter is going to the ANWG general meeting she is our representative and they are having

some bylaw changes. As newsletter Editor Rebecca states "as Editor, My job is to Edit." She is asking for people to write articles for the newsletter. There was also some discussion on what needed to be published in the newsletter.

Melanie Smith Challenge Chairman: is asking the study groups to put together displays of what their groups are doing. She will need help and will have volunteer signup sheets at our June meeting.

The study groups reported that they would be meeting over the summer.

Meeting adjourned to move to regular meeting at the Adelman House

◆ Respectfully submitted, Janet Stanger, Secretary

Guild Officers and Chairs

President: Cynthia Newman (541) 523-2451

Vice-presidents: Mitzi Meyers 340-9775

Kathy McGowan 939-7215

Secretary: Janet Stanger 377-0746

Treasurer: Irene Chandler 467-4997

Membership Officer: Irene Chandler 467-4997

Librarian: Judy Tallent

Newsletter Editor: Rebecca Winter 859-2822

Weaving Intensive Study Group: Vila 323-7736

Spinning Study Group: Lynn Ruggles 375-9172

COE Study Group: Mary Berent 939-8906

Day Weaving Study Group: Rebecca Winter 859-2822

Bobbin Lace Study Group: Vila Cox 323-7736

Web Master: Vila Cox 323-7736

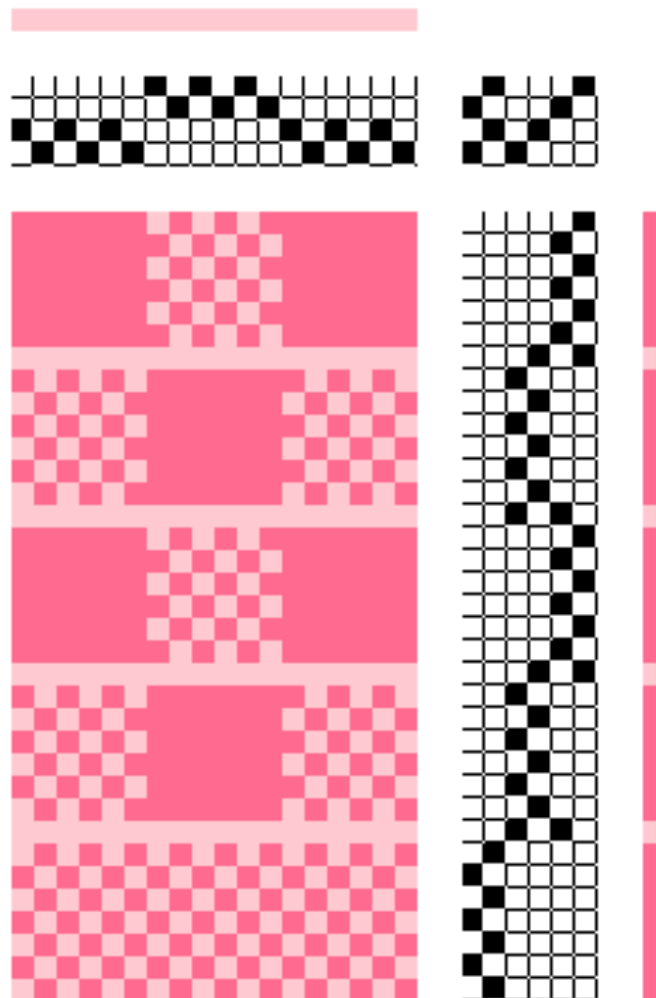
Past President - Al Hayden - 343-7300

Website

<http://www.handweavers-guild-boise.org>

Draft Inspiration

Here is the draft for this month's Sample Exchange. See page 3 for a photo of the actual fabric, woven by Irene Chandler.



The monthly newsletter from the



handweavers guild of boise valley, inc.

## June Newsletter Highlights:

- ✿ June Program: Annual Picnic at Mitzi's
- ✿ Year Long Program: UFO's - Special Presentation
- ✿ Dues are Due - Contact Irene Chandler

