

Connecting Threads

Handweavers Guild of Boise Valley June, 2026

June Program: Potluck and Summer Challenge

The program for our June meeting is the potluck and Summer Fiber Arts Challenge (see details later in the newsletter). Please bring a food item to share at the potluck and your place setting (plate, utensils, and napkin) and something to drink.

◆ Lisa Baker & Robin Conrads, Vice Presidents



Calendar of Events

Regular Meeting:

June 6, 2026 ~ 11:30 a.m.

Board Meeting

June 6, 2026 ~ 9:30 a.m.

Program ~ Potluck and Summer Challenge

At the Boise First Congregational Church of Christ,
2201 Woodlawn, Boise, in the Banquet Room
Next meeting - September 5, 2026

Study Groups:

June 9, 2026 ~ Lace Study Group

10:00 a.m. ~ At the home of Sue C.

June 10, 2026 ~ Spinning Study Group

11 a.m. to 2 p.m.~ (Wednesday) At Rubaiyat
Bookstore, 314 S 6th Ave, in Caldwell

June 11, 2026 ~ Beginning Weaving Study Group

6:00 p.m.~ At the home of Sheri Bittner

June 14, 2026 ~ Spinning Study Group

12 p.m. to 4 p.m.~ (Sunday) At Rubaiyat
Bookstore, 314 S 6th Ave, in Caldwell

June 14, 2026 ~ Rigid Heddle Study Group

2:00-4:00 pm. ~ Lunatic Fringe Yarns, Fruitland

No Meeting ~ Day Weaving Study Group

June 18, 2026 ~ Tapestry Study Group

Evening? ~ Location to be determined

June 21, 2026 ~ Paper Study Group

1:30 p.m.~Location to be determined

Every Thursday ~ Thursday Fiber Friends Zoom

2:00 p.m. ~ Meets on Zoom

~~~~~

### **Workshops:**

**Understanding Profile Drafts**, by Deb Essen. June 19-21, 2026, at the Fairview Terrace Community Center, Meridian, ID.

**Color-And-Weave: A Design Technique**, by Rebecca Winter. October 16, 17, & 18, 2026, at the Fairview Terrace Community Center, Meridian, ID.

To find Member Contact Information, log in to your [groups.io](https://groups.io) account and look in "Files" for the Membership Directory.

The link to the BoiseGuildGroup is [HERE](#).

## Membership

Registration for guild membership is open for the 2026-27 guild year. To stay current and connected, renew by the end of this guild year (June 30). Membership remains \$35. Digital payment, check, or cash are all accepted. Register online at <https://www.handweavers-guild-boise.org/shop>, by mail, or in-person at the guild meetings. Digital payments add a small processing fee (\$2). Mail-in forms may have a delay in processing, as the mail is picked up monthly. (OPTIONAL ~ If you request paper-mailed newsletters, the additional fee for that service has increased to \$35.)

◆ Cindy Griewe, Membership Chair

## Sample Exchange

For the sample box at the June meeting I will have 3D printed Wraps Per Inch notions in a few colors.

◆ Jeannie Phillips, Sample Box Chair



## Summer Fiber Arts Challenge

The Summer Fiber Arts Challenge is for all members of the guild to make a scarf over the summer. Participants will be given a surprise challenge from one of four categories. Eight-shaft, 4-shaft, and Rigid Heddle will be given a draft with instructions for weaving the scarf. The All Fiber Arts category (spinning, knitting, crocheting, etc.) will be given either circle, square, or triangle, and that scarf project will be a little more open to interpretation. All members are welcome to choose the category they like. Everyone who completes the challenge and brings their scarf to the September meeting for show and tell will be entered into a drawing to win a gift certificate to Lunatic Fringe Yarns. (This is *not* an exchange, so you can make the scarf for yourself or get a jump on holiday gifts.) Come to the June meeting and join in the summer fun!

◆ Lisa Baker & Robin Conrads, Vice Presidents

## President's Letter

Is it possible that another guild year has come and gone already? A year of learning new skills, meeting new people and sharing with each other. What a year!

I want to thank everyone in the guild for participating and making our community stronger this year. It has truly been a pleasure to work with the board members, committee chairs, speakers and study group chairs. And to see all the new and old friendships that our guild nurtures. I hope you are enjoying what the guild offers! If you have suggestions for programs that you would like to see, please let the vice presidents know so we can make plans over the summer.

I am looking forward to our annual potluck on June 6th. I hope you will come and celebrate another year together!

◆ Katzy Luhring, President

## Association of Weavers Guilds Conference Name Tag Project

The weaving for our four name tag designs is well under way, and some of our weavers have finished. We plan to weave enough cloth for 550 handwoven pockets attached to hand-plied lanyards and plastic sleeves.

Thank you for supporting this project. There are lots of opportunities for coming together as a fiber community. Look for updated information for the new guild year in the next newsletter, published at the end of the summer.

◆ Rebecca Winter, Name Tag Project Co-Chair



## 2027 Intensive: Supplementary Warps

It's never too early to start thinking about the Intensive in January 2027. Next year's topic, Supplementary Warps, covers a wide variety of projects that can be done. Two great books on the subject are *Supplementary Warp Patterning* by Barbara J. Walker and *Easy Weaving with Supplemental Warps* by Deb Essen. This is a self-guided study group, so start planning your project soon. More information and registration will be available in the Fall.

◆ Robin Conrads, Intensive Committee Chair

## Upcoming 2026 Programs & Workshops - Plan Ahead

### ~ Workshop ~ **Understanding Profile Drafts**, by Deb Essen **June 19 - 21, 2026**

Just a few weeks until the workshop with Deb Essen! Registration is closed, but contact Robin if you want to participate. It's not too late! See the flyer for more information about the workshop.

If you have any questions or are interested, contact Robin or Lisa.

~ Workshop ~ **Color-And-Weave: A Design Technique**, by Rebecca Winter **October 16 - 18, 2026**, at the Fairview Terrace Community Center in Meridian, ID. There are only **four** openings left! Cost: \$150.00, and a Materials Fee of \$40 to be paid to Rebecca on the first day of the workshop. Sign up at the meeting or contact Robin.

◆ Lisa Baker, Vice President

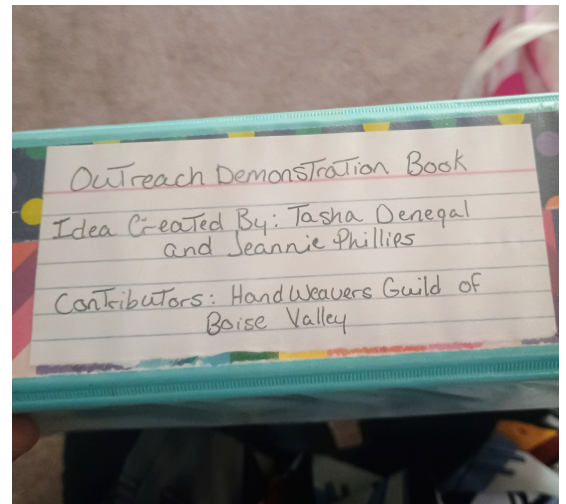
### ~ **September 2026 ~ Summer Challenge Show-And-Tell**

## Demonstration Book

As I mentioned at the last Guild meeting, Tasha and I have created a Demonstration Book to showcase our skills we all do as a Guild. The goal is to *show* people what we do instead of simply telling them. Large pieces need to be no bigger than 10" x 7" with a little 3x5 card explaining the piece, and small ones need to be 3" x 2" with a similar sized card explaining the piece. The book will make it's debut at this year's Western Idaho Fair.

◆ Jeannie Phillips, Sample Chair and Outreach team.

**Editor's Note:** Please bring samples and explanations to the June meeting, so Jeannie and Tasha have the tools they need to showcase our amazing guild over the summer.



## Demonstration Events

Here are the dates for the upcoming events that I announced. A couple of dates have changed. Demonstrators of any fiber art are encouraged to participate and demonstrate their skills. This is how we promote our Guild to the public.

Sign ups will be at the meeting. Watch the newsletter and Groups email for locations and directions.

◆ Janet Stanger, Outreach Chair

### **Idaho Renaissance Faire (Beltrane)**

June 6th from 10am to 7pm.

June 7th from 10am to 6pm.

### **Western Idaho Fair**

August 21st to 30th. From 12 to 4 pm.

### **Old Farm Days**

September 27th from 12 to 5pm.

### **Idaho Renaissance Faire Part 2**

To be announced.



## Study Groups:

### Spinning Study Group

For June, the Spinning Study Group will meet June 10th the second Wednesday, 11-2 AND June 14th the second Sunday, 12-4. I have added a second day for those who are unable to attend during the week.

◆ Jeannie Phillips, Study Group Chair

### Tapestry Study Group

The tapestry group didn't meet in May but we plan to get together on the third Thursday of June. The place hasn't been finalized but we will probably be reverting to an evening time slot for the summer. Details about the next meeting will be announced in advance by email through the main list. Stay tuned!

◆ Mary Donato, Study Group Chair

### Lace Study Group

The lace study group will be meeting on Tuesday, June 9th at Sue C.'s house, 10:00 to 12:00. Contact me if you need the address.

◆ Raelene Viste, Study Group Chair

### Beginning Weaving Study Group

The Beginning Weaving study group meeting will be Thursday June 11 at 6 p.m. at my studio. The address is 2756 S. Cloverdale Rd, Boise, ID 83709. My number is 858-752-7209, call or text with any questions. The topic for June is Troubleshooting and Fixing Errors.

We will continue to meet through the summer. The July 9th meeting topic is Finishing/Sewing/Fringe and the August 13th meeting topic is Altering Drafts. All meetings are at 6 p.m. on the second Thursday. Bring your questions, ideas and projects for show and tell. All are welcome. The more the merrier.

◆ Sherry Bittner, the Very Happy Beginning Study Group Chair

### Day Weaving Study Group

The Day Weaving Group will not be meeting in June. We will resume meeting in July.

◆ Greta Ankeny, Study Group Chair

### Rigid Heddle Study Group

June 14, 2026 at Lunatic Fringe Yarn in Fruitland. Meeting starts at 2pm. Topic: Planning for the Summer Challenge, or any project you'd like to start.

We have decided to continue meeting through the summer on the 2nd Sunday of each month; June 14, July 12, and Aug 9. Email reminders and topics will be sent to the group about a week ahead of time.

Sunday July 26 we are having a Weave-Together-Meet-Up from 11 a.m. - 5 p.m. in Caldwell. Come when you want / stay as long as you want. This will be a potluck and gab session while we spend time together weaving on our projects. This will be a great time to share ideas/skills and help each other with questions on RH topics and skills and just have fun together!

◆ Jinks Hunter, Study Group Chair

### Paper Study Group

Our next meeting is on June 21, 2026, at 1:30 p.m. and the location is yet to be determined. Bring your Show and Tell to share, and plan to share any new study information you have found. And always remember - paper is fiber, too!

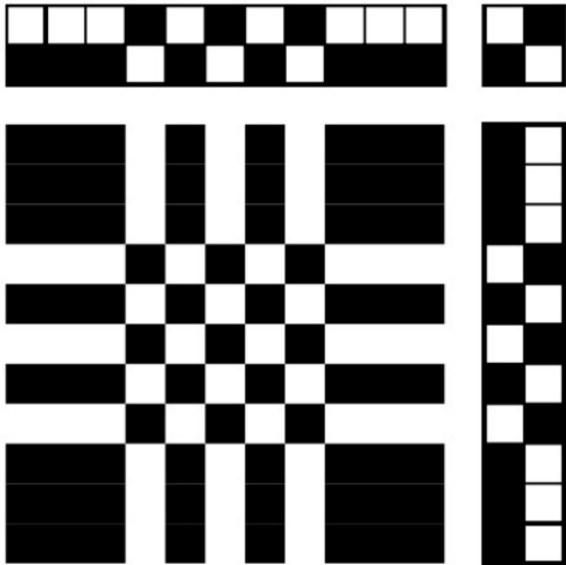
◆ Rebecca Winter, Study Group Chair

### Thursday Fiber Friends

We are an informal group who meet at 2 pm every Thursday via Zoom. We work on our projects, help each other with project questions and chat about whatever comes up. Feel free to stay the whole time (and make some progress on that project) or just pop in for a bit of time for a quick catch up when busy with other stuff. We're very flexible - please feel welcome to join us.

◆ Jinks Hunter, Study Group Chair





## UNDERSTANDING PROFILE DRAFTS

with Deb Essen

June 19, 20, 21 - 2026

Fairview Terrace Community Center – Meridian, ID

Have you seen drafts like this and wondered how to use them to create fabric?

Learn how to use profile drafts as a powerful weaving design tool! We will learn how to translate a profile draft into thread by thread drafts for several weave structures.

We will also discuss what kind of weave structures can use profile drafts and what structures can't. Samples in round robin format, so everyone will go

home with a sample of at least five weave structures discussed in class and have a chance to play with them.

The workshop is open to members of the Handweavers Guild of Boise Valley and will be held June 19 – 21, 2026, at the Fairview Terrace Community Center in Meridian. If you would like to attend the workshop but are not a member of the Guild; membership is \$35.00 <https://www.handweavers-guild-boise.org/>.

The cost of the workshop is \$150.00 (\$155.00 if you pay with a credit card). For comparison, workshops like this that are offered at conferences such as ANWG usually charge ~ \$400.00.

Students will bring their table or floor loom un-warped, because students will be warping looms in class (students must be comfortable warping their looms independently). Pre-class instructions will be sent to attendees in May. The class is geared toward advanced beginners through intermediate weavers.

If you have any questions about the workshop, please contact Lisa Baker or Robin Conrads: email addresses are available through the Guild's groups.io site.



**Deb Essen** lives, weaves, and runs her business *dje handwovens* in the Bitterroot Valley, nestled in the Rocky Mountains of western Montana. In 2004, Deb achieved the Certificate of Excellence in Handweaving-Level 1 through the Handweaver's Guild of America. In 2011 she was inducted to the Montana Circle of American Masters in Folk and Traditional Art. Her book, *Easy Weaving With Supplemental Warps*, was published originally by Interweave Press in 2016. In 2022, the book was re-released as an expanded revised edition, with more projects and weave structures, by Schiffer Publishing. She has recorded five weaving videos, available through Long Thread Media, ranging from supplemental warps to profile drafting and has written multiple feature articles for *Handwoven* and *Little Looms* magazines. Deb is passionate about teaching about the wonders of weaving and teaches at shops, guilds, regional and national conferences and festivals.

# Color-and-Weave: A Design Technique

by Rebecca Winter

a Workshop offered by the Handweavers Guild of Boise Valley

Rebecca describes the workshop as follows:

“Color-and-weave ... occurs when there is a combining of two elements of weaving. These two elements are the weave structure and the use of two contrasting yarns as stripes in both the warp and the weft. A visual patterning is created that is seemingly unrelated to the weave structure or the use of color.”

Winter, Rebecca. *The Enigma of Shadow Weave Illuminated*.  
Atglen, PA., Schiffer Publishing Co., Inc., 2022.

Does this definition intrigue and excite you? I have to admit, it always has for me.

Is it possible to weave Color-and-Weave on any loom? Absolutely!!

This workshop is a round robin style exploration. Participants will receive drafts before the workshop, and will arrive with their loom warped and ready to weave. Each participant will weave on the looms of others, for a full learning opportunity, involving many color-and-weave drafts. Each loom will have a different draft. In round robin workshops, participants provide the yarn for their warp and enough yarn for each of the other participants to weave on their loom.

This 3-day workshop is primarily for rigid heddle or shaft looms. The Weaving Drafts will be for 2, 4, 6, or 8 “shafts” and participants will need looms with these configurations to match their assigned draft. Participants will be given all the drafts in a multiple page binder filled with colorful handouts.

Through this process, as described, participants will leave the workshop with an understanding of how to weave color-and-weave drafts, how it creates the third thing, and how to create their own unique color-and-weave drafts.”



## Workshop details:

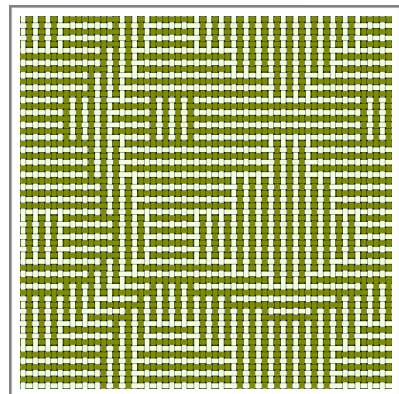
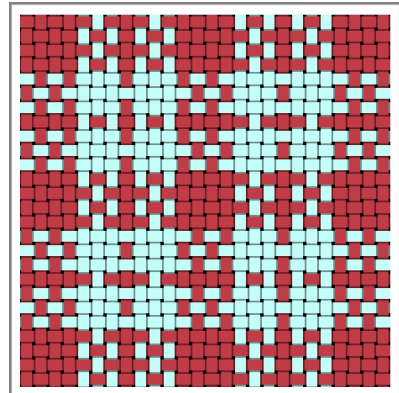
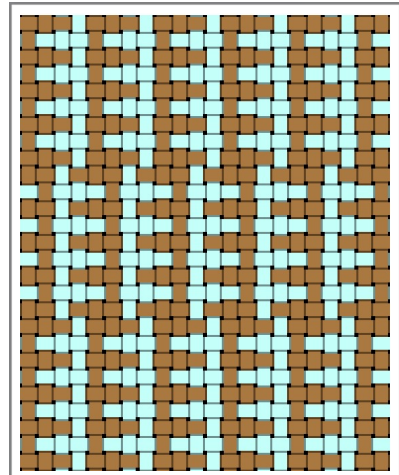
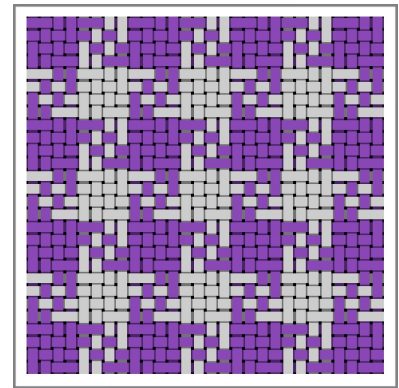
When: October 16, 17, 18, 2026 (Friday, Saturday and Sunday)

Where: Fairview Terrace Community Center

700 E Fairview Ave, Meridian, ID

Price: \$150.00, with a materials fee of \$40.00 to be paid directly to Rebecca at the workshop.

Workshops are a great way to treat yourself to three full days of weaving and to get to know your fellow guild members. You can also pick up tips and tricks for weaving, loom use, and material (yarn) considerations. All this information and great camaraderie is a steal at any price and the Guild works to keep the cost as low as possible.



## Regular Meeting Minutes ~ May 2, 2026

Call To Order at 11:00AM

- Present were 42 attendees: Katzy Luhning, Dyan Lay, Robin Conrads, Cindy Griewe, Vila Cox, Amy Roche, Sherry Bittner, Jane Hoover, Kathy Hutchinson, Joan Webster-Vore, Cynthia Newman, Amy Perry, Tracey Stringer, Tasha Denegal, Jeannie Phillips, Mary Donato, Irene Chandler, Irma Atkinson, Linda Morton-Keithley, Cornelia Shotwell, Germaine Howson, Sheila Miller, Susan Inouye, Raelene Viste, Janet Stanger, Jean Zaske, Zena Zaleski, Nancy Alzola, Julie Gerrard, Cynthia Brandt, Karla Herre, Kari Lawton, Shaina Cleverdon, Annie Wolf, Mitzi Meyers, Katé Lyons-Holestine, Jinks Hunter, Chelsea Grigsby, Nancy Swenson, Tessa Stoner, Connie Griffith, Hanna Meinikheim, Benji, Amalia and Valerie.

Business

- President – Katzy Luhning
  - Katzy welcomed everyone, and asked members to introduce themselves by name and favorite non-fiber hobby.
  - She went over the rules for the program, the annual Fiber and Equipment Sale; Dyan will collect the Guild’s sales percentage at the end of the sale.
- Vice Presidents – Lisa Baker and Robin Conrads
  - Robin discussed upcoming workshops:
  - Payment is now accepted for Deb Essen’s workshop, Understanding Profile Drafting. The event will be at the Fairview Terrace Community Center on June 19-21. Spots are still available, and the Guild is looking for a host. Attendees should bring an unwarped loom.
  - Color-And-Weave: A Design Technique, by Rebecca Winter will be October 16-18 at the Fairview Terrace Community Center. Sign up and payment is now being accepted. All looms and weaving level are welcome: rigid heddle, 2, 4 or 8 shaft, beginner, intermediate, everyone.
  - Robin explained that the June Regular meeting program will be the annual potluck, held at the Church. There will be a summer project, and details will be presented.
- Sample Box – Jeannie Phillips
  - Jeannie Phillips will be taking over the Sample Box. The Guild thanks Christie Farrin for all her great work! Today’s sample is by Rebecca Winter.
- Membership – Cindy Griewe
  - Cindy urged members to renew by the end of June. The \$35 annual dues may be paid via online, in person or by mail. Mitzi Meyers checks the Guild’s post box once a month.
- Secretary – Dyan Lay
  - Dyan reminded everyone that she will be collecting the Guild sales proceeds as well as to sign the sign-up sheet on the Membership desk.

### Officers & Guild Board

- President - Katzy Luhning
- Vice President - Robin Conrads
- Vice President - Lisa Baker
- Secretary - Dyan Lay
- Treasurer - Kelly Sandusky
- Membership Officer - Cindy Griewe
- Past President - Mary Berent

### Chairs

- Librarian - Sally Johnston
- Web Master - Robin Conrads
- Equipment - Vila Cox
- Newsletter Editor - Robin Conrads
- Pat Ann Fund Administrator - Anne Oglevie
- Sample Exchange - Jeannie Phillips
- Outreach Committee - Janet Stanger
- Social Media - Dyan Lay
- ANWG Representative - Connie Griffin
- Spinning Study Group - Jeannie Phillips
- 2027 Weaving Intensive Study Group
  - \* Robin Conrads
  - \* Hana Meinikheim
  - \* Nancy Alzola
  - \* Connie Griffin
- Day Weaving Study Group - Greta Ankeny
- Beginning Weaving Study Group - Sherry Bittner
- Rigid Heddle Study Group - Jinks Hunter
- Garment Study Group - Anne Oglevie
- Lace Study Group - Raelene Viste
- Thursday Fiber Friends Zoom - Jinks Hunter
- Tapestry Study Group - Mary Donato
- Paper Study Group - Rebecca Winter
- Church of Christ Contact Person - Vila Cox
- Bowmont Church Contact Person - Rebecca Winter
- Fairview Terrace Community Center Contact People - Rebecca Winter & Cindy Griewe
- Post Office Box Name Holder - Mitzi Meyers

- Outreach Committee – Jeannie Phillips and Janet Stanger
  - Janet and Jeannie described event demonstrations planned and urged volunteers to sign up. Check the latest newsletter for upcoming events.
- Study Groups
  - Beginning Weaving – Sherry Bittner: This group meets the second Thursday of every month at 6PM.
  - Paper – Mary Donato/Hanna Meinikheim: This group meets the third Sunday at 1:30PM.
  - Rigid Heddle – Jinks Hunter: This group meets monthly the second Sunday.
  - Day Weaving – Greta Ankeny: This group meets the third Tuesday of each month.
  - Fiber Friends – Jinks Hunter: This group meets via Zoom every Thursday at 2PM and is a great opportunity to sit with friends, work on a project and chat.
  - Tapestry – Mary Donato: The group meets the third Thursday of every month.
  - Lace – Raelene Viste: This group meets the second Tuesday at Raelene’s home.
  - Spinning – Jeannie Phillips: This group meets the second Wednesday at the Rubaiyat in Caldwell.
  - Garment – Mary Berent: This group meets the fifth Tuesday.
  - Always check the latest newsletter for all Study Group activities and meeting details.
- Show and Tell
  - Kari Lawton showed her crocheted wrap in progress.
  - Cyn Brandt passed around a sweater with woven bits.
  - Mary Donato demonstrated her inkle loom pieces, nametag and hat tie.
  - Irene Chandler told of the Nampa Art Show this week.
  - Hanna Meinikheim displayed an intricate origami paper ornament, cyanotypes, wee knit balls and Krokbragd coasters.
  - Zena Zaleski finished her Learn-to-Weave Weekend towels with several twills.
  - Katé Lyons-Holestine exhibited her knitted contest entry.
  - Jane Hoover spoke of using colored chalk to show the floating selvedges on her Learn-to-Weave Weekend piece
  - Cindy Griewe made Zanshi towels, and showed her hibiscus tapestry, a color-and-weave shawl wrap, and the inkle loom strap that she, Benji, Amalia and Valerie made.
  - Tessa Stone presented a Kumihimo necklace.
  - Germaine Howson brought crocheted socks and a sweater start.
  - Jeannie Phillips wore her knitted fade.
  - Irma Atkinson took off her rigid heddle loom her Learn-to-Weave Weekend project as well as crocheted soap bags and washcloths.
  - Vila Cox presented her design for the ANWG nametag project.
  - Sheila Miller introduced her mini Navajo loom that she put on the free table; Irma snapped it up.
  - Cornelia Shotwell showed several wonderful woven pieces.
  - Susan Inouye finished her Learn-to-Weave Weekend project into nine hemmed pieces.
  - Raelene Viste passed around the shoelaces she created on her box loom and an inkle band.
- Today’s program is the Annual Fiber and Equipment Sale. Meeting adjourned at 12:59PM.

◆ Respectfully submitted by Dyan Lay, Secretary

## Affiliate Programs

Windmill Crest Farms  
11136 Smith Ave  
Nampa, Idaho 83651

Windmill Crest Farms is supporting our Guild by contributing 5% of the retail cost back to our Guild for every Schacht product purchased by our members. Contact Karla Herre directly at 210-241-1107 or [windmillcrestfarms@gmail.com](mailto:windmillcrestfarms@gmail.com).



Guild Affiliate Program  
Handweavers Guild of  
Boise Valley

Coupon Code:  
**2025hwgbv**

Use this code on our website to save  
5% on your order &  
earn 5% for your guild!



[www.LunaticFringeYarns.com](http://www.LunaticFringeYarns.com)  
(800) 483-8749



Our Guild is now part of The Woolery's Guild Reward Program! The Woolery offers an easy way for our members to support our Guild by purchasing through our unique shopping link. Our Guild will receive 5% back from the total order value when you use the link below.

This is a great way to earn money and support the Guild by doing things you would already be doing: buying yarn, supplies, books, etc.!

Buying link: <https://woolery.com?aff=440>

## Enjoy the summer!

