

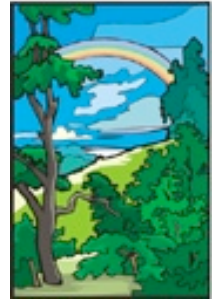
Connecting Threads

Handweavers Guild of Boise Valley
☘☘☘ March, 2009 ☘☘☘

March Program -- Diversified Plain Weave

by Vila Cox

Vila will reveal the secrets of Diversified Plain Weave, which was the topic of her Level II research for the Certificate of Excellence. Vila says she was studying color, structure and contrast, and how they interact in diversified plain weave. This is going to be a program you won't want to miss.



Calendar of Events:

- March 7, 2008 - Board Meeting
Moxie Java, 1122 S. Vista, Boise
10:00 am
- March 7, 2009 - Guild Meeting - Boise Historical
Museum - Prospector Room
11:30 am - Business Meeting
12 noon - Social time
1:00 p.m. Program - Diversified Plain Weave
by Vila Cox
- March 12, 2009 - Spinning Study Group
Maralyn's clubhouse in Meridian
6:30-8:30 p.m.
- March 20, 21 & 22, 2009 - Weaving Workshop
Magic in the Water II, with Laura Fry



Linen Towel Exchange

The Handweaver's Guild of Boise will host a High Tea, Potluck and Linen Towel Exchange at the regularly scheduled meeting in June, 2009.

For your towel we ask that you use linen as a thread in either warp, weft or both. Suggested sizes are 17" by 30" for a linen tea towel or 16" by 32" for a hand towel. Please bring your towel gift-wrapped. The Vice Presidents have handouts of sample drafts and information about using linen in weaving. Ask them for your copy.

CHALLENGE 2009 What Can You Do With MONOCHROMATIC?

It's time to start thinking about your entries for the 2009 Challenge. You have until September to create the prize winning entries for display at Museum Comes to Life. The theme this year is "What Can You Do With MONOCHROMATIC?" So...it's time let those creative juices flow and show us what you CAN do using one color. Select one color on the color wheel, with at least three changes to that color going from dark to light or light to dark, and create one or more masterpieces for the Challenge. If you have any questions regarding the Challenge, please contact one of the Challenge Committee members: Julie Gerrard, Mitzi Meyers, Vila Cox, Penny Schraufnagel, or Rebecca Winter. For more details, see the flyer on pages 6 & 7 of the newsletter.

Guild Meeting Minutes

President Al Hayden called the meeting to order. Members present were Pat Ann, Carolyn Dade, Irene Chandler, Vila Cox, Marita Turner, Cindy Shaffer, Lynn Ruggles, Mary Berent, Cynthia Newman, Penny Schraufnagel, Kathy McGowen, Rebecca Winter, Mitzi Meyer, Julie Gerard, , Jean Zaske, Ruth Gildersleeve, Ivy DeHart Nancy Swenson, Marlene Bean, and Mary Ireland. Guests included Janice Stanger, Betsy Turner, Julie Harkness, Karen Rainwater, Pauline Prather, and Pamela Beitia.

Vice Presidents Reports: The warps for the upcoming Laura Fry workshop were handed out to participating members. Next month's program will be given by Vila on Diversified Plain Weave.

Treasurer's Report: Irene gave the treasurer's report with \$2412.00 in deposits for ads, fees, etc.

Nominating Committee Report: Mitzi announced the proposed slate of officers for next year. They are: Al Hayden - President; Cece Stricklin and Kathy McGowen - Vice Presidents; Irene Chandler - Treasurer; Cynthia Newman - Secretary; and Penny Schraufnagel - Membership Officer. Vila Cox will continue the website management, Pat Ann will continue as Librarian, and Rebecca Winter will continue as newsletter editor.

Challenge report: Julie announced the theme for this coming September's Museum Comes to Life Challenge - "What Can you do with Monochromatic?" MCTL will be the last Saturday in September again and handouts were given out.

Study Groups: Spin Study Group will meet February 12 at Maralyn Larson's club house. COE - met today and will meet again in April. Anyone is invited to attend whether you are going for your spinning or weaving COE or not.

Mary Barent announced that there will be a special COE Celebration on February 21 at the home of Penny Schraufnagel to celebrate Vila Cox's latest COE accomplishment. She also noted that out of 53 people nationally who have their COE's our Boise chapter has 3 of them.

Librarian report: Pat Ann is still looking for suggestions for new books for the library and she also mentioned that there are overdue books out.

Al talked about this year's intensive. There were ten looms present and the subject was Over-shot. Fun was had by all. Next year will be Profile drafts. There will be more information in the coming months.

In miscellaneous items, the Garden Valley Spin In was brought up. It will be held February 15 from 10 - 3 at the Garden Valley Community Hall.

Mitzi mentioned that she is in the market for another Harrisville loom if someone has one or knows of one for sale.

Jean Zaske gave this month's Color Study. The study this time was "Fiesta" and what each member interpreted that to be. There were many samples shown. Next time will be Green and Brown.

Show & Tell: Vila brought her Tencel Throw to show. Rebecca brought a Circles warp from the Challenge two years ago and also her woven bags. Pamela Beitia showed her vest that she had hand woven and knitted. Pat Ann had a woven bag that she found at a second hand store. Ivy brought her tencel scarves from painted warps she had done for this last year's challenge. Mary Berent showed a birthday book she got with woven samples in it. Kathy McGowen had her Intensive warp to show. Julie brought a unique ribbon that she got for Christmas as well as a camel hair bracelet. Penny had two rugs she had woven. Marita showed her knitted baby sweater. The meeting was adjourned and after a short break Pamela Beitia and Pauline Prather gave a wonderful hands-on program about blending wool bats for spinning.

• Respectfully Submitted, Mary Ireland



Ramblings from the President

What a great turnout we had for last month's meeting. Lots of show and tell, too. Then there was the enticing program by Pamela Beitia.

I want to thank all of the committee's that have been working throughout the year. The continued dedication of the members are what keep the guild alive and well.



Deciphering the Color Code



At the February guild meeting we looked at "fiesta" colors. From what was shown, it looks like fiesta colors are primary and secondary colors in true hue - no tints, tones or shades. However, there was one beautiful shawl done in a pastel version of fiesta - quite colorful and lovely. In any case, all of the colors definitely brightened up the day!

For March, let's look at the combination of brown and green. Think mint chocolate, or the browns and greens of nature or even St. Patrick's Day - is there a leprechaun out there with brownish-reddish hair wearing green?!!!! Bring your brown and green woven or spun items, or samples of brown and green fibers that you think go well together - or not!

Study Group News

Spinning Study Group

Join the Spin R Us Group on March 12, at Maralyn's Clubhouse, 6:30-8:30. Anyone is welcome to join us, whether you spin or not!

Questions or need directions? Call Lynn Ruggles, 375-9172.

Certificate of Excellence (COE) Study Group

The COE study group will meet next on Saturday, April 4, at Moxie Java on Vista. All are welcome to participate. We will meet from 9:30 to 11:00 am.

Call Mary Berent for more info. at 939-8906.

Recipe from Pamela

Our February program presenter offered us a wonderful treat of homemade cookies. She agreed to share her recipe with the guild, as follows:

Carrot Oatmeal Cookies

3/4 cup softened margarine
1 3/4 cup all purpose flour
3/4 cup brown sugar (packed)
1/2 cup granulated sugar
1 egg
1 tsp. baking powder
1/2 tsp. cinnamon
1/4 tsp. baking soda
1/4 tsp. ground cloves
1 tsp vanilla
2 cups rolled oats
1 cup finely shredded carrots
1/2 cup raisins

In a mixing bowl beat margarine with electric mixer for 30 seconds. Add half of the flour, all the brown sugar, granulated sugar, egg, baking powder, cinnamon, baking soda, cloves and vanilla. Beat until combined. Stir in the remaining flour. Stir in oats, carrots and raisins. Drop by rounded teaspoonfuls 2 inches apart on an un-greased cookie sheet. Bake at 375 degrees F for 10-12 minutes. Cool on rack.

Now this is what I do -

I used a standard creaming method - beating the margarine, then adding the sugars and beating well. Then I added the egg and vanilla. I used about 2 Tbsp of the flour to mix with the dried fruit - it seems to keep the fruit from sinking to the bottom - I increased the Cinnamon to 1 tsp. I added the flour, baking powder, baking soda and spices, then the carrots and dried fruit.

I used more than a 1/2 cup of combined dried apricots and dried cranberries. Butter tastes good in these cookies as well - heh heh.

Pamela Beitia



Guild Officers and Chairs

President - Al Hayden - 343-7300
Vice-presidents - Cece Stricklin - 387-2641
 Marlene Bean - 337-3631
Secretary: Mary Ireland - 896-4833
Treasurer - Irene Chandler - 467-4997
Membership Officer - Penny Schraufnagel - 342-1288
Librarian: Pat Ann - 452-3181
Newsletter Editor: Rebecca Winter 895-0975
Weaving Study Group: Julie Gerrard 342-8562
Weaving Intensive Study Group - Al Hayden
Spinning Study Group: Lynn Ruggles 375-9172
COE Study Group: Mary Berent 939-8906
Web Master: Vila Cox 323-7736

Websites

<http://www.handweavers-guild-boise.org>
<http://my.calendars.net/handweavers/>

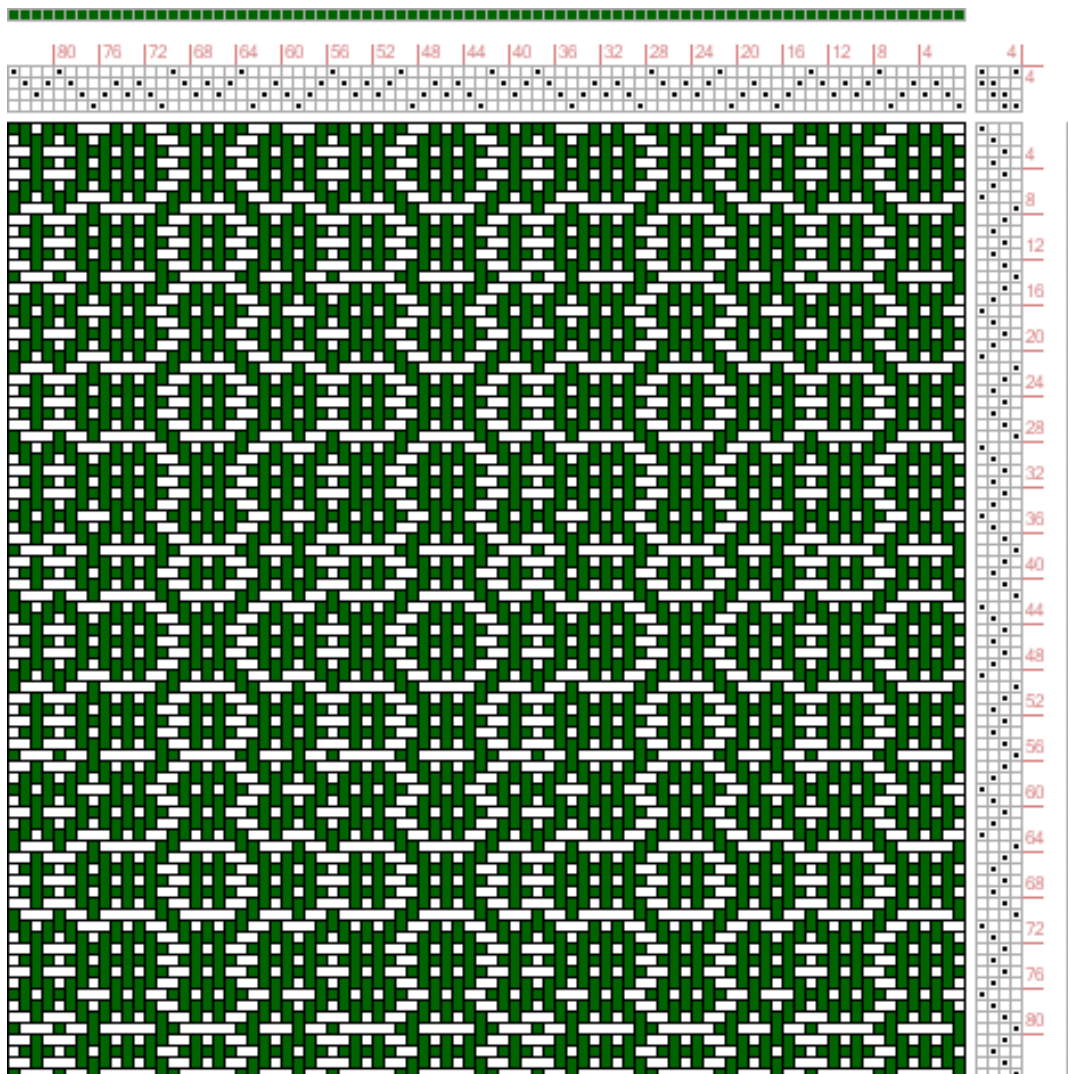
Newsletter Samples

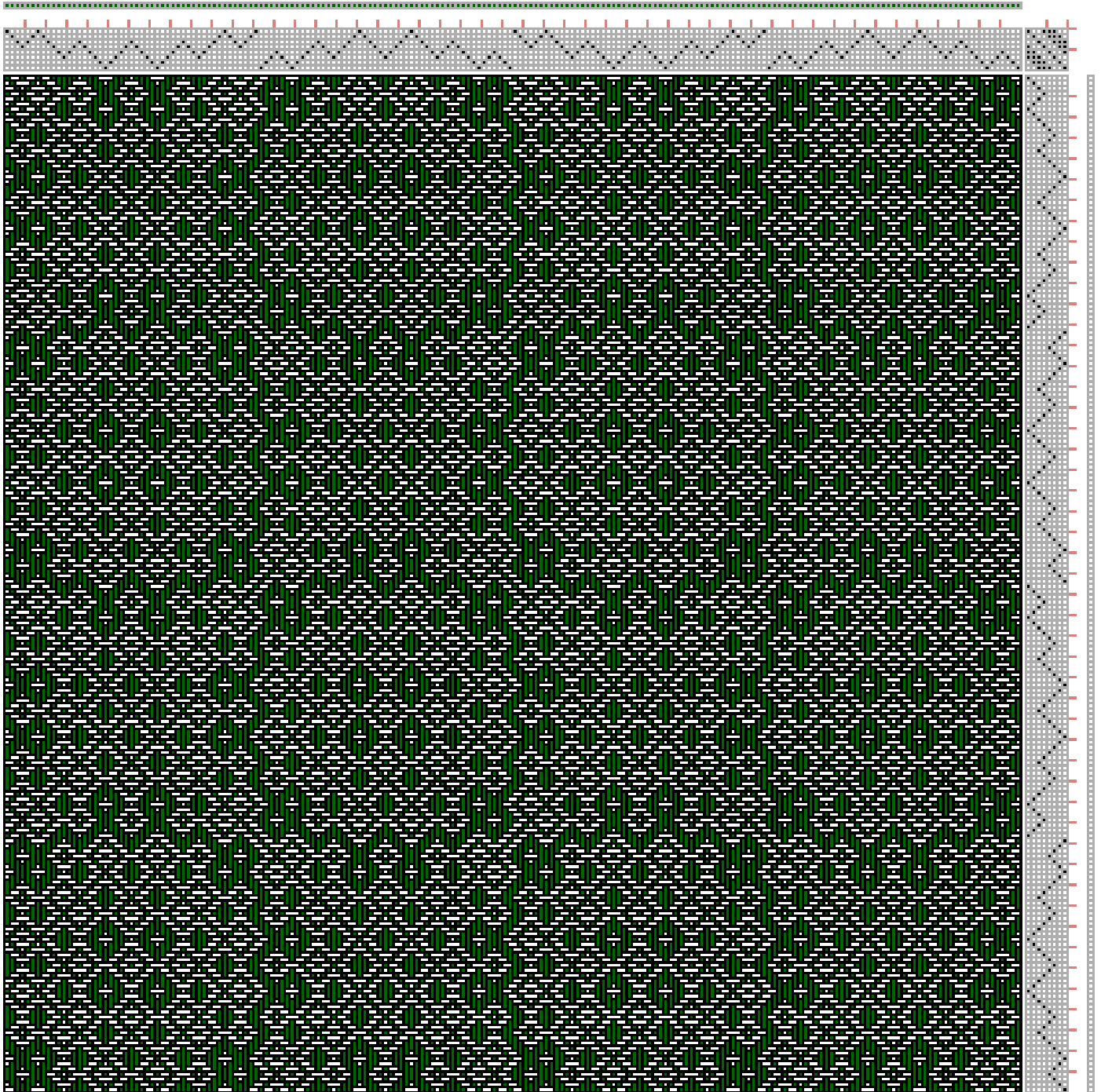
Have you been missing those wonderful Newsletter Weaving and Spinning Samples now that the Newsletter is primarily electronic? Well, miss them no more!! A new system is being devised as we speak. Come join us at the next meeting to learn about how you can participate and receive samples in the future.

Draft Inspiration

The following drafts are from <http://www.handweaving.net>. You can go there and enter the number to see all the specifics about each draft.

Draft # 1551





A Little Green for the Month of the Shamrock!



What Can You Do With **MONOCHROMATIC**? CHALLENGE 2009

What is monochromatic?

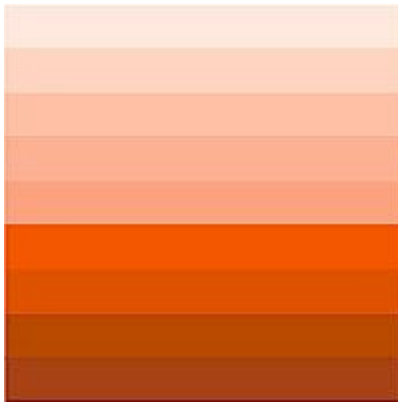
From Merriam-Webster dictionary -Pronunciation: \ , mā-nə-krō- ' ma-tik\

Function: *adjective*. Etymology: Latin *monochromatos*, from Greek *monochrōmatos*, from *mon-* + *chrōmat-*, *chrōma* color. Date: 1822

1 **a**: having or consisting of one color or hue **b**: **MONOCHROME** 22: consisting of radiation of a single wavelength or of a very small range of wavelengths 3: of, relating to, or exhibiting **monochromatism** 4: lacking variety, creativity, or excitement : **COLOR-LESS**

Monochromatic color - From Wikipedia, the free encyclopedia

Monochromatic colors are all the colors (tints, tones and shades) of a single hue.



Monochromatic color schemes are derived from a single base hue, and extended using its shades, tones and tints (that is, a hue modified by the addition of black, gray (black + white) and white). As a result, the energy is more subtle and peaceful due to a lack of contrast of hue. Monochromatic color schemes may be considered boring unless there is diversity within the design.

Example of Monochromatic color

The challenge is to select one color on the color wheel and create an exciting woven piece, skein of yarn, or fiber art. Going from dark to light or light to dark, you must have a progression of at least three changes to the color when creating your masterpiece.

This is an excellent opportunity to play with one color and see where it takes you. Weavers, if you are more of a structure person than a color person, it's time to step out of your comfort zone, pick a color, and go for it. Spinners, you could create a luscious variegated yarn that could win you big bucks at Museum Comes to Life. Or, push that envelope even further, and take your flat handwoven item or skein of yarn and turn it into fiber art.

All entries must be entirely your own work since last September.

Registration is due by Saturday September 16th. Finished items should be turned in by September 20th.

There will be 4 categories for prizes:

1. Flat handwoven items – includes yardage and hemmed or fringed pieces (scarves, towel and rugs)
2. Handspun skeins – must include at least 80% handspun yarn.
3. Finished items from handspun
4. Fiber Arts – non-flat handwoven fabrics (including clothing) or 3-dimensional items, such as baskets. Must include 75% handspun or handwoven.

Prizes will be awarded for each category: \$50 First Place - \$35 Second Place - \$15 Third Place

Challenge 2009 Entry Fees are \$5.00 for the first entry, \$2.00 each for the second and third entry (a maximum of \$9.00). Any additional entries from the same person are free, so please enter as many pieces as you wish.

Entry Form

Name _____ Telephone Number _____

E-Mail Address _____

Address _____

Category	Description of Piece	Fee

Submit form and entries to: Julie Gerrard, 2020 Mortimer Court, Boise, ID 83705 342-8562



Teacher's Corner

What CAN you do with Monochromatic? A monochromatic harmony consists of a single hue and its tints (hue plus white) and shades (hue plus black). Sounds easy, right?

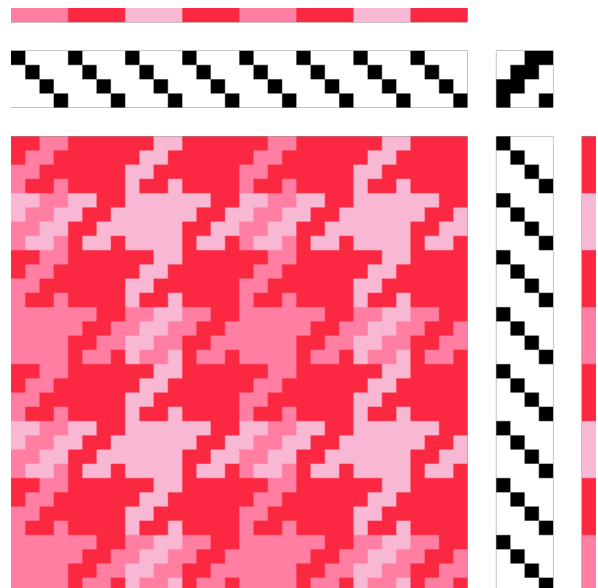
It is a challenge to find yarns in colors that are truly from a single hue in the marketplace today. Beware the light color or the dark color with just a hint of another hue. These would be considered, most likely, an analogous harmony, which is using hues next to one another on the color wheel.

As you can see in this draft it is easy to use the computer palette which is already set up to provide a range of monochromatic choices. These pinks are all from the same gradated hue. Perhaps this is a way to get started. You can refer to your computer draft when purchasing yarn or searching your stash.

Dyeing your own yarn is another option. You have control over the hue and can just change the depth of shade.

It will be fun to see what is created using monochromatic for the next Challenge. And, as you can see, color-and-weave is a perfect choice. Hmm, I wonder what I will make??!!

Enjoy, Rebecca Winter



Connecting Threads
PO Box 6258
Boise ID 83707

The monthly newsletter from the



handweavers guild of boise valley, inc.



March Newsletter Highlights and Please Remembers:

March Program: Diversified Plain Weave

March Color Code: Mint Chocolate

June, 2009: Linen Towel Exchange, High Tea and Potluck

2009 Challenge: Monochromatic

