



Connecting Threads

Handweavers Guild of Boise Valley
March, 2011

Calendar of Events

- March, 5, 2011 - Board Meeting
Moxie Java, 1122 S Vista, Boise
10:00 to 11:00 am
- March 5, 2010 - Guild Meeting -
Boise Historical Museum
at the **Adelmann House**
11:30 am - Business Meeting
12 noon - Social time
1:00 p.m. Program - **Ikat**, by Kathy McGowan
- March 10, 2011 - Spinning Study Group
Maralyn Larson's Clubhouse
350 East Carmel Drive, Meridian
6:30 - 8:30pm
- March 21, 2011 - Day Weaving Study Group
Home of Rena Lute
2273 West Burns, Eagle
1:00 pm
- March 12, 13, 14, 2011 - Weaving Workshop
Extreme Warp Makeover, by Robyn Spady
- April 2, 2011 - Regular Meeting and
Election of Officers

~ All are welcome to all events! ~

March Program

On March 5th Kathy McGowan will educate and excite us on using Ikat. (It is pronounced "eecot", I must admit I searched it on Bing and **Heard** the proper pronunciation!) This is a wonderful way to add a totally different look to a warp. It is a very interesting technique that can add a huge dimension to your weaving projects with a little bit of work.

◆Mitzi Meyers

Nominations

Nominating Committee... At the March 5th meeting nominations of the upcoming year's board will be announced for you all to contemplate.

◆Mitzi Meyers

UFO Program

UFO = Un Finished Objects: those craft/art things you started sometime ago that live in the back of the closet or drawer. Only 4 months remain for UFO's so GET 'ER Done!



◆Mitzi Meyers



Ramblings of the President

The perks of following directions:

I was first drawn to fiber because of the textures and colors and the thrill of creating something that was uniquely my own. I approached weaving with an "anything goes" attitude, I combined different fibers and yarn weights in the warp, without a care in the world for what one was "supposed to" do. Most of my exploration was in plain weave and my emphasis was on how the colors and textures related to one another in the fabric. I didn't spend a lot of time thinking about the appropriate sett of the fabric, I just picked a number combination, close to 12 epi, that was handy to sley into the reed, and I was off and weaving. Lately I have been trying to wrap my mind around weave structure, and I have been working with finer yarns, I am enjoying the process. But this week I discovered that I keep trying to "reinvent the fabric." Finally, today I decided to gather up all of the sett charts that I have floating around the studio and put them all together in one folder, and you know what, someone has already discovered that 10/2 cotton is sett in a balanced plain weave within the range of 18-27 epi. I have been weaving 5/2, 8/2 and 10/2 cotton over and over, and each time, trying to figure out the sett. Now I know that this seems really obvious, but this came as a revelation to me today. I can just take notes on my projects and keep the information handy and refer back to it later. When it comes to creating, I have never been one to want to read or follow directions. I just want to figure things out on the fly, But this week, I am extending a "thank you" out to the late Harriet Tidball for sharing her sett chart with me. Now I can get on with the business of weaving a perfectly balanced plain weave.

❖ Cynthia Newman, President

Study Group News

♥ Spinning Study Group

Spinning Study Group will welcome Spring with a pre-Spring Fling on **March 10**, 6:30-8:30 pm at Maralyn's clubhouse (350 East Carmel Drive, Meridian, ID). The color this month is **Hope Springs Eternal Green**. Contact either Maralyn (888-2650) or Lynn (375-9172) for more information. Non-spinners are welcome!



♥ Day Weaving Study Group

We will meet on **March 21** at 1 p.m. at the home of Rena Lute, 2273 West Burns, Eagle, at 1:00 pm. Call Rebecca at 859-2822, for more information.



♥ Certificate of Excellence (COE) Study Group

The COE Study Group will be held on **April 2** at 9:30 a.m. at the Moxie Java on Vista in Boise. As usual, everyone is invited, for information call Mary Berent 939-8906.

Upcoming Programs

April: Live Animal show! Alpacas and Rabbits for fiber fun!! I am excited to have these 2 ladies bring an animal for us to pet, admire, and imagine the possibilities that can be done with their fiber. They will both also be bringing some things for sale, so please bring your checkbook/wallet to support these 2 animal farms. You may contact them with questions or special requests of items to purchase at:

DianeHawkes summerlinalpacas@cablone.net.
Rhonda Shay (german angora, sheep, soap maker, etc) fuzzbutt1@frontier.com

May: The Annual Yarn and Equipment Sale, so gather up those things that are useful, just not to you and cash in on them.

Monthly Sample Exchange

This month's sample is from Cindy Schafer -- a fabulous twill motif on 16 harnesses. See both sides below.

Members may pull samples from the Sample Exchange Box at each regular guild meeting. And remember to check your name off the list in each file folder. If you would like to participate or have questions, contact the Sample Chair.

Also, remember, there are samples from last year that are available to anyone toward the back of the box.

❖ Rebecca Winter



Guild Meeting Minutes

Guild minutes 2-5-11

President Cynthia Newman called the meeting to order. Present at that time were Vila, Mary Berent, Mitzi, Melanie, Rena, Caroline Dade, Nancy Swenson, Irene, Kathy McGowan, Pat Ann, Lynn, Rebecca, Al, Carol, Marita, Judy, Penny and Michelle.

The Robin Spady workshop is a "go" and instructions have been emailed to participants that are currently signed up. There is still space available at this time.

Mitzi announced programs of:

Today-Sewing Machine Maintenance by Rebecca
March-Kathy on Ikat

April-Fiber Animals with Diane Hawks including visits by llama and alpaca. Diane will have fiber available for sale and can be contacted for special requests. Mitzi then educated us on alpaca hygiene habits.

May-Yarn and Equipment Sale.

Treasurers report-Irene noted that there was \$5973.94 in the checking account, \$545 income for month, \$45 in library expense and \$193.86 in other expense (mainly the intensive).

Penny noted that we are at 50 members.

Librarian-Judy said that she was still organizing herself in the new position and the library was open.

Rebecca said the next Day Study Group would be meeting at her old studio house on the main floor on the 21st.

The sample of the month is one from Al's dye study. He will be doing the same color with different fibers in future months. Rebecca also explained about the retired samples that were available to anyone who had not already received them.

The ANWG conference is scheduled for the end of May, first week of June in Salem, OR. There will be an emailed survey available regarding the future of ANWG.

Website - Vila noted that the officers need to work with her on the website to note corrections and additions. Pat Ann mentioned that there might be a problem with resource area access.

Intensive - Doubleweave was wonderful and the guild's notebook is pending samples. Rebecca did have her notebook available for us to review. Next year's topic will be exploring color

harmonies. There will need to be a 3 hue warp and you will need to explain why you picked this harmony.

Challenge - Melanie stated that this year's challenge will be "Undyed Fibers". This should be a real challenge for the public to judge since they tend to like the colorful items.

The natural colors of cotton were briefly discussed.



Spinning study group - Lynn noted that spinning would be Thursday the 10th at Maralyn's clubhouse with Merry Berry Red as the color. She also noted that the Garden Valley Spin-in would be on Sunday the 13th at Crouch. (35 spinners attended)

COE support group met this morning and would meet again in April at the Vista Moxie Java.

Nominating committee - Mitzi said there still needs to be a president and treasurer for the slate of officers and Vila encouraged all new members to participate and make the guild their own.

Mitzi also stressed that ANWG needs a chairman for the next conference and it would be a shame to lose this educational conference in our area.

Big Sky Fiber Festival is scheduled in Hamilton, Mt. June 10-12.

UFO's - Irene showed a short sleeved jacket from fabric she bought some time ago. Nancy S. showed pink to lavender fiber that had been turned into 2 skeins so far.



Show and Tell:

Mary B. - Skein from new electric spinner

Melanie - Extra Handwoven magazine that was up for grabs.

Marita - Knitted scarf and hat.

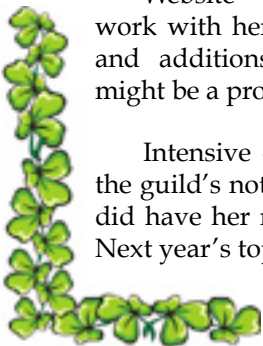
Carol F. - Remade man's silk suit into jacket as project to up-cycle fabric.

Kathy M. - Sample from intensive and Jason Collingwood rug she just purchased in Turquoise and Navy Blue.

Pat Ann - Jason Collingwood rug in green and maroon. She also brought new pattern sheets for her intensive pattern.

Lynn - Knitted cape from leftover handspun. Also demonstrated hair twister using Mitzi as subject, then gave it to her for fringe twisting.

Mitzi - dyed rayon chenille scarves.



The brief intermission was followed by the sewing machine maintenance workshop using two of her machines and one other for a partial cleaning. Several members then went home and followed her instructions for happier sewing machines.

❖ Respectfully submitted, Penny Schraufnagel, substituting for Janet Stanger, Secretary

Guild Officers and Chairs

President: Cynthia Newman (541) 523-2451
 Vice-presidents: Mitzi Meyers 340-9775
 Kathy McGowan 939-7215
 Secretary: Janet Stanger 377-0746
 Treasurer: Irene Chandler 467-4997

Membership Officer: Penny Schraufnagel 342-1288
 Librarian: Judy Tallent
 Newsletter Editor: Rebecca Winter 859-2822
 Weaving Intensive Study Group: Vila 323-7736
 Spinning Study Group: Lynn Ruggles 375-9172
 COE Study Group: Mary Berent 939-8906
 Day Weaving Study Group: Rebecca Winter 859-2822
 Web Master: Vila Cox 323-7736
 Past President - Al Hayden - 343-7300

Website

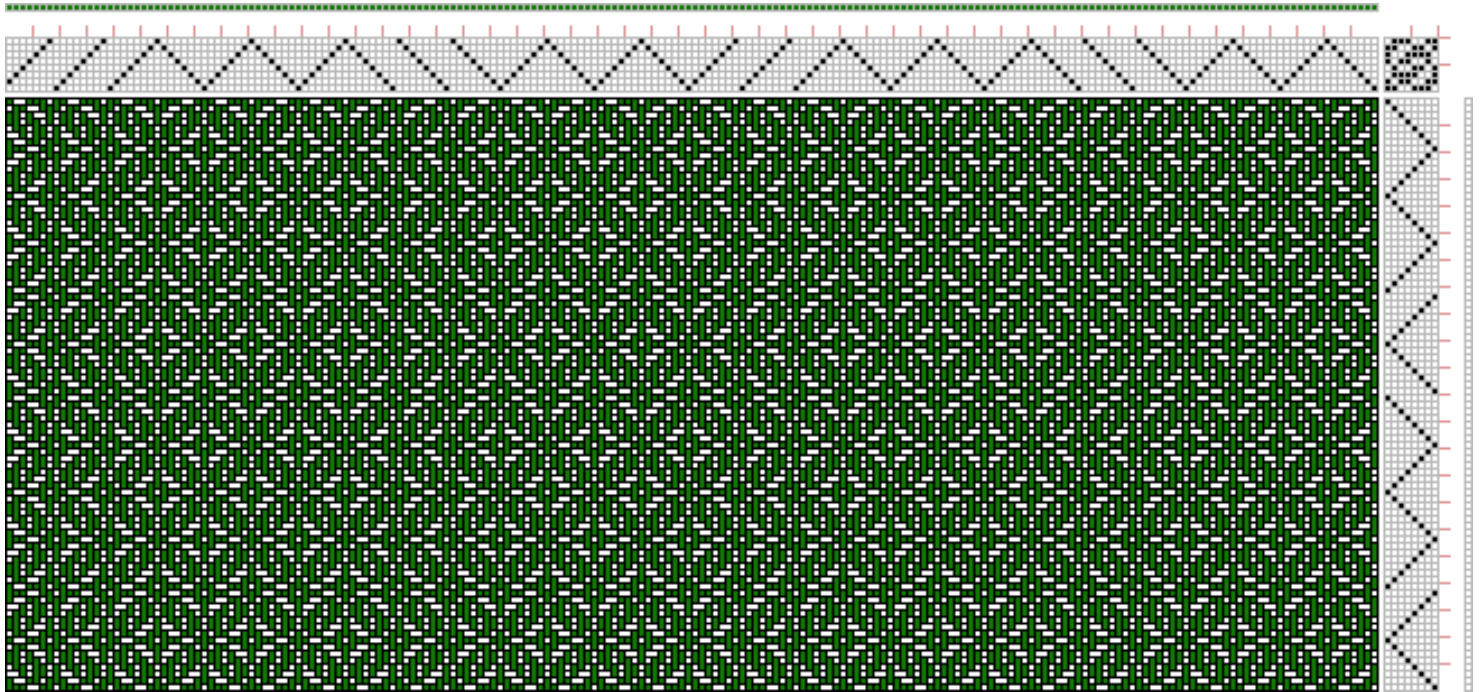
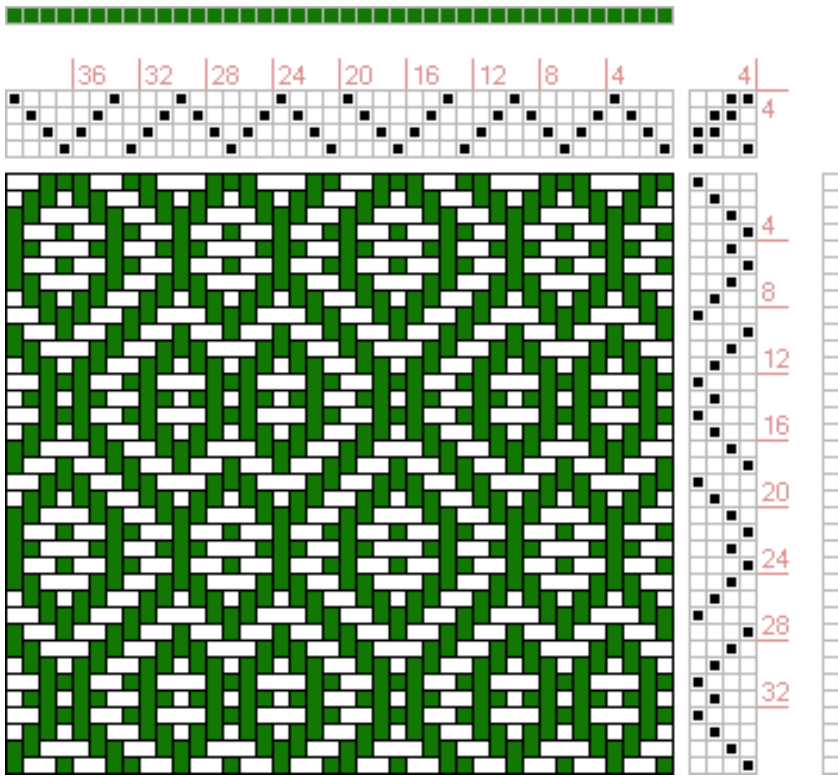
<http://www.handweavers-guild-boise.org>



Draft Inspirations

Here are some drafts from <http://www.handweaving.net>. You can go there and enter the number to see all the specifics about each draft, as well as download a .wif file. A little putting on o' the green!!

Draft #13380



Draft #10243

Look for the cool circular medallions in this one! - Maybe for the next Challenge on circles!



The monthly newsletter from the



handweavers guild of boise valley, inc.

March Newsletter Highlights:

- ✻ March Program: Ikat
- ✻ Robyn Spady Workshop - This Month!!
- There are still openings!! You may still Join us at the Last Minute!! See Previous Newsletters for Information**
- ✻ Year Long Program: UFO's
- ✻ Nominations of Officers to be Announced

