

Connecting Threads

Handweavers Guild of Boise Valley
December, 2008

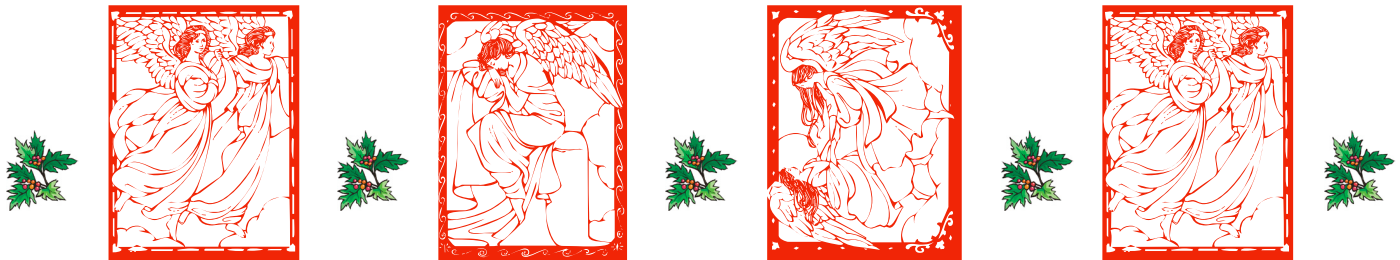
December Program -- Christmas Luncheon and Pin Exchange

Our December Potluck will be held at 11:00 a.m. at Penny Schraufnagel's home in Meridian. We will have a short business meeting beginning at 11:00, following by the potluck lunch (bring a dish of your choice), and then the pin exchange will follow lunch.

For the pin exchange the only requirements are: Make a handmade pin with at least a portion of the material being fiber related, and size NO LARGER than 3" x 3". Please bring your pin wrapped.

Thanks in advance to Penny for hosting our potluck and meeting this month!

-Cece & Marlene



Directions to Penny's house:

From either Boise or points west on Highway 84, take the Eagle Road exit from the freeway. Turn south on Eagle, go past Overland about 2/3 of a mile up a slight rise. A fire station will be on your right and the turn left on Easy Jet will be coming up. Turn left and follow Easy Jet to the end where it turns left on Tristram. Four houses later turn right on Hollandale. Proceed to the stop sign on Goshen. We are across the street, slightly to the right at 2688.

If coming from Boise on Overland, turn left on Cloverdale; go about 1/2 mile and turn right on Muir Ridge; continuing until it turns left and becomes Goshen Way.

Calendar of Events:

December 6, 2008 - COE Study Group

Moxie Java - Silverstone
1630 S. Eagle Rd., Meridian
Southeast corner of Overland
and Eagle Road
9:30 to 11:00 am

December 6, 2008 - Guild Meeting - Home of
Penny Schraufnagel - 2688 Goshen Way, Meridian

11:00 am - Business Meeting
12 noon - Social time, Luncheon
1:00 p.m. Program - Pin Exchange

December 11, 2008 - Spinning Study Group

Holiday Dessert Pot Luck and White Elephant
Exchange at Maralyn Larson's
345 E Spinosa Dr, Meridian
6:30-8:30 p.m.

January 17, 18 & 19, 2009 - Weaving Intensive
Treadling Variations in Overshot

March 20, 21 & 22, 2009 - Weaving Workshop
Magic in the Water II, with Laura Fry

Trip Report by Lynn Ruggles

I recently traveled to Los Angeles with my husband to attend a Sidecar rally. I also had the chance to visit a friend there who belongs to two weaving guilds. We, in turn, visited a friend of hers who belongs to one of these guilds.

Susie is a weaver who grew up in Richmond, Virginia. She owns a weaving loom that has been in her family since the 1850's. The loom was rented to the producers of the movie *Roots*, and was used in several scenes in the film. Susie's husband was a lawyer with the movie studios and Susie had an opportunity to travel to many places around the world. In her travels, she acquired many weaving and spinning items and eventually built a 3-story addition to her house to hold her collection.

The first floor room holds 4 weaving looms (only two of them set up), and a variety of tools. Shelves along one end of the room hold smaller items such as small wheels, shuttles, and spindles. The second floor room holds about 20 spinning wheels from around the world. Susie has three wheels that she spins on regularly, but the rest have not been used since she got them. The third floor contains more spinning wheels, yarn swifts, and other fiber related tools. In addition to the equipment in each room, there are baskets of fiber or yarn on the floor, hanging from the walls and in cupboards in each room. Each of her bedrooms (I think there were 3 or 4) has additional wheels in it, and there are 4 wheels in her living room. She has an old Japanese Obi loom in her upstairs hallway.

Susie said that if she saw something in an antique store and she thought it was fiber related, she bought it. Some items she bought, and found out later what they were. She has kept documentation on where everything was purchased, and has labeled all the items in the collection. Unfortunately, she has not found a museum or organization that is interested in housing her collection, without a substantial donation to pay for maintenance or to finance a building or room to hold it. She has two sons who are not interested in it at all.

Not only is Susie a collector of textiles, she also collects swans. Every room in her house is lined with shelves holding her swan collection -- ceramic, wood, paper mache, cups, bowls, trivets, pictures, teapots.

Deciphering the Color Code



November's guild meeting was brightened by quite a range yellow fiber. The yellows were almost true in hue to tints, yellows with orange and red in them, yellows with blue and green in them, yellows with grey or black in them and some that looked gold. There were even colors that no one would say were "yellow" but definitely had yellow in them. All of which were fun to look at. Irene brought in a book cover that had a photo of a quilt with a dominant yellow color and a good discussion ensued on what was happening with the color play displayed in the quilt.

For December, we are back to mixing colors! Using the color wheel as our guide, we'll be looking at "triadic chords". This means looking at 3 colors that make up an equilateral triangle on the color wheel. Please search your fiber stashes and created items for colors in these combinations (color chords): Yellow-Red-Blue; Yellow Orange-Red Violet-Blue Green; Orange-Violet-Green and Red Orange-Blue Violet-Yellow Green.



Are
you are planning to
participate in the **Laura Fry
Workshop?** Please notify the Vice
Presidents immediately to hold your
spot. The openings are being filled
as we speak.

See flyer in this newsletter.



Ramblings from the President

'Tis the season of sharing with family and friends. Join us at Penny's home for our December meeting; this is our Christmas Potluck and Gift Exchange. Come and bring your gastronomical delights along with your appetites. Also share your creativeness of our craft with a "Handmade Pin" for the gift exchange.

We will be addressing issues with the Laura Fry workshop during the meeting. There has been very limited response for this event and the VP's are concerned that we may not have the necessary participating to cover expenses. Time is getting short for confirmation with Laura.



We will be convening the Challenge committee; this is an opportunity for service to the guild. Please be ready to volunteer.

The Guild Policy group met this month and will have an item for the members to decide on.

A big thanks to Mary for her excellent presentation on Tencel.

An early Merry Christmas and Happy New Year to you and yours.

-- Al

Guild Meeting Minutes

November 1, 2008

The meeting was called to order by President Al Hayden. Members present included Mary Berent, Penny Schraufnagel, Rebecca Winter, Irene Chandler, Marlene Bean, Mary Ireland, Pat Ann, Lynn Ruggles, Julie Gerrard, Cynthia Newman, Jean Zaske, Marita Turner, Maralyn Larsen, Cindy Schafer, and Mitzi Meyers.

Reports - Vice Presidents - Marlene gave out an information sheet for the upcoming Laura Fry workshop. Members need to be enrolled for this workshop by January 1st.

She talked about the Christmas meeting. It will be a potluck and pin exchange and will be held at Penny Schraufnagel's new home. There will be directions to Penny's house in the next newsletter. In January the program will be a program by Rebecca Winter on Kumihimo. In February Pamela Beitia will be giving a program on layering wool bats for spinning. In June we will be having a High Tea and a Linen towel exchange. The suggested size

for a finished towel should be 15" by 22". There will be more about this in an upcoming newsletter.

Mary Berent will give today's program on Tencel.

Treasurer's Report - Irene gave the treasurer's report. There is \$3752.11 in the checking account and \$4506.63 in the Savings account. She will have a proposed budget for the December meeting.

Study Groups - Spin Study Group. Lynn reported that the next two spin study groups will meet at Maralyn Larsen's house. The December get together will be a dessert potluck and fiber white elephant exchange. Spin Study group meets the 2nd Thursday of each month.

Weave Study Group - The weaver's study group is studying overshoot in preparation for the weaving intensive coming up in January. The November meeting will be on November 20 at the home of Mary Ireland in Marsing, Idaho. Treadling and multi-harness will be the topic this month.

Al talked about the upcoming Weaver's Intensive. It will be held over the Martin Luther King holiday weekend in January and will be on Overshot. So far eleven people are signed up and there is still available space.



COE Study Group - the next COE study group will be in December at the Moxie Java near Penny's house. That Moxie Java is located at Eagle and Overland. The group will meet at 9:30 am.

Al announced that Vila Cox has attained her COE Level Two - Master Weaver. Three people applied and only Vila was accepted. There will be a reception for her after the first of the year. Mary Berent will chair a committee to plan this and Rebecca volunteered to help. Cost was discussed and \$350.00 was proposed for putting it on. The motion was made and seconded, and was approved

by a vote of the membership to have \$350.00 available for the reception.

Library Report – Al had several new magazines to go into the library along with two new books. The Library will be open during the break time of the meeting. Pat Ann stated that there is also a Peter Collingwood DVD available.

Rebecca suggested the possibility of having book reports about various books in the library put in the newsletter from time to time. She also suggested an education section for the newsletter. Marlene suggested an article about linen weaving might be timely because of the linen towel exchange coming in June.

In other business it was suggested that someone do an article about all of our COE people and possibly picture some of their work on the website.

There will be a Policy meeting at 7:00 p.m. on November 12 at Rebecca Winter's house. All are welcome to come and work on this. Policies are the "fluid" part of the guild. These provide for the year to year guidance of the guild.

Color Study – This month's color study was Yellow. There were many examples brought by the membership. It was very interesting to see the many shades and hues of yellow. Next month's colors will be explained in the newsletter.

Show and Tell – Jean Zaske brought her finished towels from her recent workshop. She also showed a very useful weight for weaving. It consisted of shower curtain hook with overlarge washers attached as the weight. It was a great idea. Julie showed her finished felted piece that she started at last month's program on needle felting. Mitzi showed her little spindle and the container for it that she made. Lynn had a beautiful lace shawl she had dyed and knit.

The meeting was then adjourned and after a short break Mary Berent gave a great power point presentation on "Tencel, the Poor Man's Silk."

❖ Respectfully Submitted, Mary Ireland, Secretary



Study Group News

Spinning Study Group

We will be having our annual Holiday Dessert Pot Luck and White Elephant Exchange at Maralyn Larson's house on December 11, from 6:30-8:30 p.m. The exchange is a true white elephant swap -- bring something you truly don't want and take home something someone else doesn't want. One person's trash is another person's treasure, so you may just luck out with the bag of 12 micron Pashmina from outer Mongolia that just needs a little dehairing.

Maralyn lives at 345 E Spinosa Dr, Meridian. Call Lynn (375-9172) or Maralyn for directions (888-2650).

Night Study Group

We will not be meeting in December. Enjoy the Holidays and work on your Overshot warp.

Certificate of Excellence (COE) Study Group

The COE study group is meeting from on Saturday, December 6, at **Moxie Java - Silverstone**, 1630 S. Eagle Rd., Meridian. It is located at the southeast corner of Overland and Eagle Road. All are welcome to participate. We will meet from 9:30 to 11:00 am.

Call Mary Berent for more info. at 939-8906.

Weaving Intensive 2009

Treadling Variations in Overshot

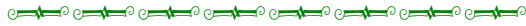
This year's intensive will be a study in the many different ways an overshot draft may be treadled. The treadlings of many other weave structures will produce wonderful fabrics when used with an overshot draft.

You will be weaving on your own loom for this intensive, so put on a warp that is long enough to do some exploring. Once you have done this for overshot, think of the possibilities in other weave. Plus, there will be several looms available for further exploration in the round-robin fashion.

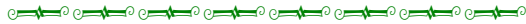
Plan now to attend this three day "teacherless workshop." The dates of the Intensive are Jan 17 thru 19, 2009. This is Saturday to Monday. See this newsletter or the guild website for more information.

Go to:

<http://www.handweavers-guild-boise.org/study-groups.htm> for more information on the Intensive and to find the Sign-up Sheet.



*There is still room for more participants in the **Overshot Intensive** in January. Don't miss this opportunity to expand your knowledge of the craft at an exceptional value. Contact Al for information.*



Guild Officers and Chairs

President - Al Hayden - 343-7300
 Vice-presidents - Cece Stricklin - 387-2641
 Marlene Bean - 337-3631
 Secretary: Mary Ireland - 896-4833
 Treasurer - Irene Chandler - 467-4997
 Membership Officer - Penny Schraufnagel - 342-1288

Librarian: Pat Ann - 452-3181
 Newsletter Editor: Rebecca Winter 895-0975
 Weaving Study Group: Julie Gerrard 342-8562
 Weaving Intensive Study Group - Al Hayden
 Spinning Study Group: Lynn Ruggles 375-9172
 COE Study Group: Mary Berent 939-8906

Websites

<http://www.handweavers-guild-boise.org>
<http://my.calendars.net/handweavers/>

Some Online Overshot Resources

Click on the links below when viewing the Newsletter online.

<http://www.weavenotes.net/overshot.htm>

http://www.weavenotes.net/2008_convergence.htm

<http://nleindex.com/index.php?pID=HTDI&sID=BrowseIndex&tID=C/1762>

<http://www.wonderhowto.com/how-to/video/how-to-weave-an-overshot-coverlet-on-an-8-harness-jack-loom-250813/>

http://www.cs.arizona.edu/patterns/weaving/wtopic_overshot.html

Teacher's Corner

Welcome to a new monthly column. We will be offering a tidbit of weaving, spinning or fiberarts knowledge here each month. Look forward to some wonderful insights to come from many of our knowledgeable members.

Recently I made an interesting little purchase from ebay. It is a folder from a college weaving class in 1944. It contains class handouts, notes written by the student, and a three page examination. I thought it would be interesting to list some of the exam questions here for all of us to contemplate. Enjoy! Rebecca Winter

1. What is the difference between a warp faced fabric and a weft faced fabric? Give an example of each. Is it correct to call either of these tabby?
2. What yarns need dressing? Name a simple dressing for both.
3. What is tapestry? Name different kinds.
4. Name as many weaves as you can. Describe one.
5. What are the color values in Colonial Overshot? What variations are there in Colonial Overshot? Name as many as you can.

Magic in the Water II with Laura fry

The Boise Handweaver's Guild is having a workshop March 20-21-22, Magic in the Water, taught by Laura Fry of Canada. Registration is open to members only of the Boise Handweaver's Guild. In addition to some great weaving drafts you will learn how to expertly finish your woven cloth! Due to the high cost of air travel to get Laura to Boise, we MUST have a minimum of 15 signed up for the workshop NO LATER than January 1, 2009. The workshop is limited to 20 participants. The workshop will be held at the Caldwell Public Library. More details will follow when you sign up for the workshop.

Workshop Cost: \$195.00 which includes a \$60.00 materials and handout fee. The drafts & warps will be provided by Laura.

Name: _____

Address: _____

Phone # _____

Table/or Floor Loom (circle one) # shafts _____

Please either return this form to Cece or Marlene at either the November or December Guild meeting or mail to: Cece Stricklin 2108 Norcrest Drive, Boise, ID 83705. Include your check made out to the Boise Handweavers Guild in the amount of \$195.00. Should you need to cancel attending the workshop you will need to find someone to take your spot as workshops fees are NON-REFUNDABLE.

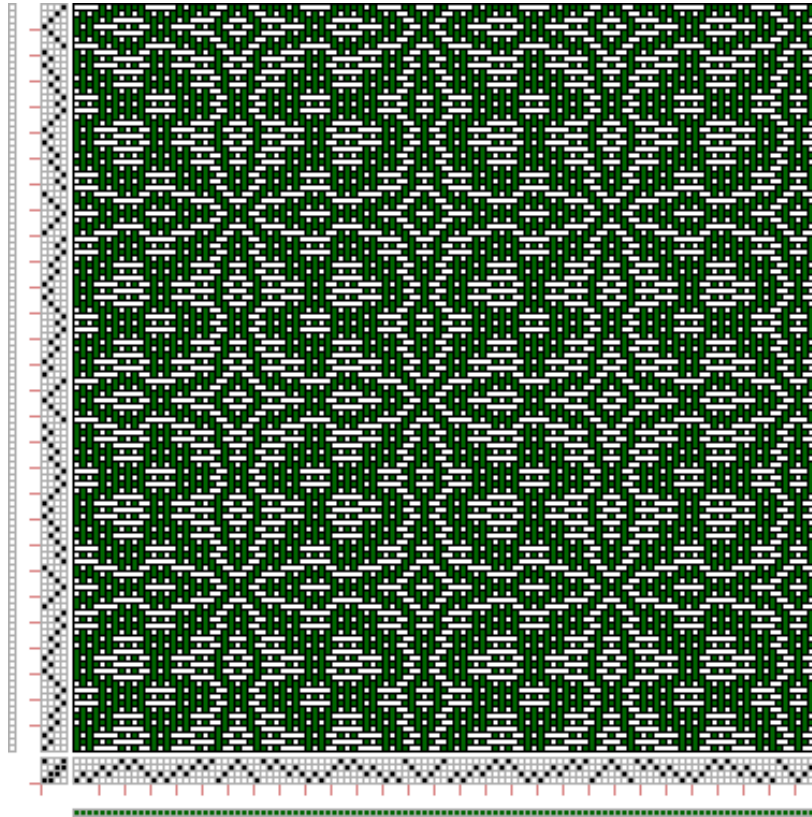
This should be a wonderful workshop.

If able to either host Laura or provide a lunch for Laura and the Guild host please check here _____ and we will contact you. Thanks!

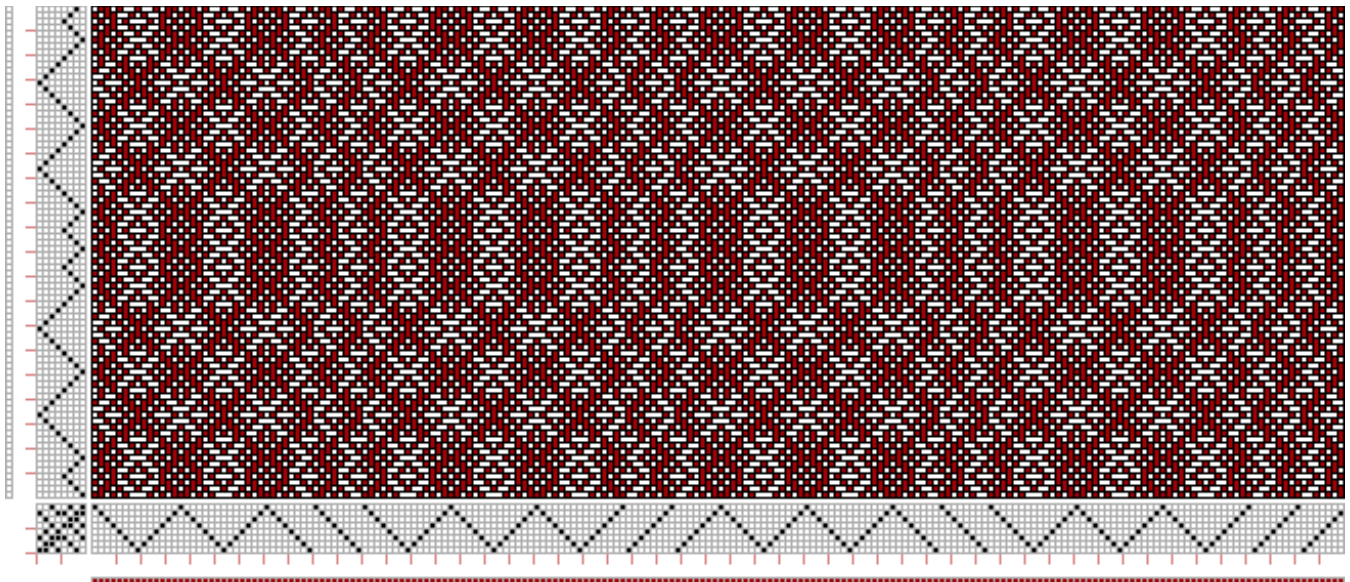
Draft Inspiration

The following drafts are from <http://www.handweaving.net> You can go there and enter the number to see all the specifics about the draft.

Draft #615189



Draft #61508



Connecting Threads
PO Box 6258
Boise ID 83707

The monthly newsletter from the



handweavers guild of boise valley, inc.

November Newsletter Highlights and Please Remembers:

Program: Pin Exchange

Color Code: Triadic Chords

Look for Fantastic Learning Opportunities!!!!

