



2012 Weaving Intensive Study Group Handweavers Guild of Boise Valley

COLOR HARMONY

Saturday, Sunday and Monday, January 14, 15 and 16, 2012
9 AM to 5 PM ~ Caldwell Library
Fee - \$30.00



Come join us and explore the wonderful world of Color
in a workshop setting. It will be a great three days
of learning, weaving, and friends!

What is the Intensive Study Group?

The Intensive is a “teacherless” workshop. We will each share in leading the group for our chosen bit of Color Theory. Each participant will pick a Color Harmony and warp the loom they are bringing to the study group. At the beginning of the three-day session, each person will describe what they have put on their loom and explain a bit about it. Then everyone will have an opportunity to weave a sample from each loom. This is a great way for new weavers to get a feel for what goes on in a Guild workshop without any pressure. Everyone is there to learn and help others by sharing what they have learned.

Before the Intensive

- Pick a color combination that illustrates the color theory concept you chose.
- Do some research on the topic you have chosen so you can explain the theory and the draft you have prepared and be able to tell others what they need to know to weave their sample.
- Make notes of what you learned during your research.

What is needed ~~

- Loom warped and ready to go. The weaver may choose any yarn that would be appropriate to the weave draft.
- Draft and information about the Color theory selected.
- Shuttles and weft yarn to be left at the loom for others to use when weaving their samples.
- A short handout would be nice for everyone to include in their notebook.

You will also want to bring ~~

- Your favorite way of marking your samples: masking tape or tags.
- A thick yarn or paper strips to weave in between samples to separate them.
- Scissors, notepaper, pen, needles for hem stitching, weights, post-it notes.
- Well, everything you usually have near your loom “just in case” you need it.
- Feel free to bring extra yarn for weft if you would like to experiment with something different as you weave some samples.

Drafts are due ahead of time ~~

Printable draft sheets need to be turned in by January 4, 2012, so that copies can be made and notebooks prepared. If you have made handouts, please send one ahead of time with the draft or bring copies for everyone.

Each participant will receive a notebook containing all the drafts, handouts, and sheet protectors to put their completed samples in.



Handweavers Guild of Boise Valley
Color Harmony Intensive



January 14, 15 and 16, 2012



Some necessary workshop information:

Each participant will bring a previously warped loom to the workshop. Each loom will be warped using a Color Harmony and draft of the weaver's choice.

Participants will provide shuttles and weft materials to be used at their loom.

Mentors are available. Please ask, if you would like to discuss your ideas or need assistance.

Send your draft in printable form or email a WIF file to Vila by January 4, 2012.

The workshop is limited to 20 participants.

The workshop is open to members of the guild. If a non-member wishes to take the workshop, we invite them to first join the guild.

The Study Group Leader will accept cancellations with a full refund through January 4, 2012. After that date cancellations will be considered on an individual basis.



Return the following form with your fee to:

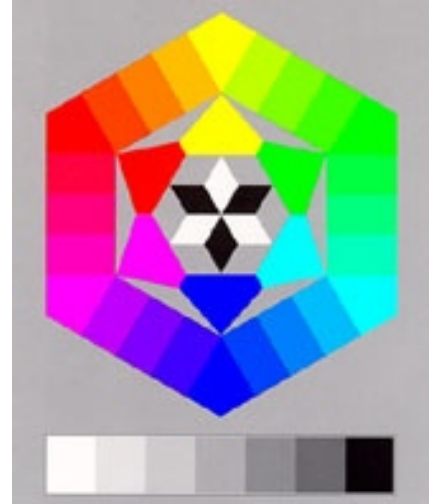
Vila Cox
2668 N Westminster Pl
Boise ID 83704

Name _____

Address _____

Phone _____

E-mail _____



Loom you are planning to use - please list brand and number of harnesses:

Do you have other looms available? Please list, if you are willing to loan them:

Fee amount included \$ _____