

Connecting Threads

Handweavers Guild of Boise Valley
April, 2008

Notice!!!

April Meeting Location Change

Due to a conflict of scheduling, the April meeting will be held in the **Prospector Room in the basement of the Historical Museum**. Go down the stairs and to the right. See you all there.

April Program: Au Naturele

The program for April will be offered by Joan Sheehan. The topic will be Sheep Breeds for Spinning and Weaving. Joan will include exotics and bring many fibers for you to touch and enjoy. A focus will be placed on the variety of natural colors available, and local producers to support our farmers and ranchers. The presentation will include Web access and viewing of an exciting Sheep Breed site!!

May Program:

Yarn and Equipment Sale

Each year the Guild offers the opportunity for members to sell any unwanted yarn, fiber, or equipment supplies. Ten percent of the proceeds goes to the guild. Sort through your stash and see if there is anything you are willing to share, for a small fee, with other Guild members. It is a great time of exchanging those treasures.



Calendar of Events

April 5, 2008 - COE Study Group

9:30 - 11:00 a.m.

Moxie Java, 1122 S Vista, Boise, ID

All are welcome.

April 5, 2008 - Guild Meeting - **Prospector Room, in the basement of the Historical Museum**

11:30 am - Business Meeting

12 noon - Social time

1:00 p.m. Program - Au Naturele:

Sheep Breeds, by Joan Sheehan

April 10, 2008 - Spinning Study Group

6:30-8:30 p.m.

Maralyn Larson's Clubhouse

May 3, 2008 - Guild Meeting - Adelman House

Program - Yarn and Equipment Sale

Deciphering the Color Code



At the March guild meeting, the "Sun-Baked Earth" palette of the Fabric Forecast Spring/Summer '08 from the September 2007 issue of "Handwoven" Magazine was

featured and most interesting was Pat Ann's dyed skeins - she had all of the colors of the palette represented somewhere in her stack of dyed skeins.

For April, let's look at the "Steel and Glass" palette. These are very cool colors - charcoal gray, light grey, tan/beige, dusty rose/mauve, a grayish white and a light steel blue with a hint of green. This is a palette I find very challenging - how about you? Please hunt through your stash and bring some of these colors to compare!

Guild Meeting Minutes

March 1, 2008

President, Marlene Bean asked members to introduce themselves by talking about how they beat while weaving. Do you beat with an open shed, closed shed or with the next shed open? In attendance was Marlene Bean, Jean Zaske, Vila Cox, Pat Ann, Penny Schraufnagel, Lynn Ruggles, Mitzi Meyers, Kirsten Badger, Cynthia Newman, Rebecca Winter, Julie Gerrard, Al Hayden, Carolyn Dade, Kathy McGowen, Carmen Hammari, Marita Turner, Mary Berent, Ivy DeHart, Irene Chandler, and Cindy Schafer. A motion to approve last months minutes was asked for, seconded and approved by the group.

Reports: Vice-Presidents: a list of potential workshops for 2009 was handed out and members were asked to pick their top 3 choices. We have great opportunities for workshops in the next couple of years! The April program will be given by Joan Sheehan.

Treasurer: No report

Challenge: A reminder that the Challenge for 2008 is based on Color Forecasts.



Nominations: The nomination committee reported that they had real difficulty getting volunteers for board positions. Please think about volunteering for an office in upcoming years. The slate of officers for the upcoming year is: President-Al Hayden; Vice-presidents-Cece Stricklin and Marlene Bean; Secretary-Mary Ire-

land; Treasurer-Irene Chandler; Membership Chairman-Penny Schraufnagel. Also we had volunteers for newsletter – Rebecca Winter and Librarian – Pat Ann. Thank you all for your dedication to the Guild.

Study Groups: Spinning – The spinning study group will dye protein fibers for the Challenge. The date and specifics of the dye day will be announced in the newsletter. COE Study Group – April 5, 2008 at 9:30 am at Moxie Java on Vista at Kootenai. All are welcomed to attend.

Announcements: Petra Beltran has more weaving and spinning books and equipment for sale – sheets handed out.

Color Code: Pat Ann brought her dye samples from the yellow range that matched the assignment exactly. The assignment for April will be Steel and Ice, one of the color schemes for the challenge.

Intensive: Reminder that the 2009 intensive topic will be “Overshot” and will be held in January of 2009.

Show and Tell: Marita showed a knitted snowflake scarf; Cindy was working on a red cabled sweater; Kirsten Badger brought turned overshot placemat and matching napkin; Mitzi was wearing a handwoven skirt, Pat Ann brought many, many dyed samples; Julie brought her Intensive workshop notebook with other treadlings for her color-and-weave sample; and Jean Zaske brought an adorable needle felted rabbit.

Program: The wonderful program was given by Carolyn Dade on Tapestry.

Respectfully submitted by Mary Berent,
substituting for Mary Ireland





Study Group News

Spinning Study Group

Our regular meeting will be April 10 at Marilyn Larson's clubhouse in Meridian. Call Lynn Ruggles for directions, 375-9172.

The SSG will be having a dyeing day sometime this spring to dye wool roving for the Color Challenge for Museum Comes to Life. This is a working group, not a class, and participants are expected to have some experience in dyeing. We are limiting this to 10 people due to limits on the space we have available. We will pair up and each pair will be responsible for one dye pot. We will be choosing colors from the palettes specified in the challenge. We will dye one pound of each color and will split the dyed fibers into 1 oz. bags to be shared among the participants. Dyes, dye pots, and other dye accouterments will be supplied by whomever has them. Fiber cost will be \$12/pound.

We already have a list of interested participants which exceeds our limit, but if you are interested, I will maintain a waiting list.

When: when the weather looks good

(might be April, May or early June)

Where: Homedale

Who: Contact Lynn Ruggles, 375-9172

Certificate of Excellence (COE) Study Group

The COE (Certificate of Excellence) Study-group is scheduled to meet April 5, before the regular guild meeting, at 9:30 am. We will meet at the Moxie Java Coffee Shop near the corner of Vista and Kootenai. Contact Vila or Mary for more information.

Weaving Intensive: Overshot

The intensive will be held next in January, 2009. The topic will be Overshot. Contact Al Hayden for more information.



Address Changes:

Mary Ireland
6548 Red Rock Rd.
Marsing, Idaho 83639
Phone 896-4833

Penny Schraufnagel
2688 South Goshen Way
Boise, Idaho 83709
Phone 342-1288



A Learning Opportunity

"Color Mixing for Dyers I" with Carol Soderlund

September 17-21, 2008, at Glacier Camp in beautiful Lakeside, Montana. Dye the color you choose, not the color that chooses you! Explore the unlimited number of hues possible by mixing only pure reds, yellows, and blues of Procion MX dye. Each student will build a sample book of more than 1,000 dye formulas on 100% cotton fabric. This book will become an invaluable reference for future dyeing. Carol Soderlund, award winning quilt artist, will teach this popular class. Workshop will be hosted by Kathy Regier, weaver, of Trout Creek, MT. All the details are available at:

www.sophiacenterofmontana.com

or call Kathy at (406) 827-3978.



Guild Officers and Chairs

President: Marlene Bean 337-3631
 Vice-Presidents: Mary Berent 939-8906
 Vila Cox 323-7736
 Secretary: Mary Ireland - 896-4833
 Treasurer: Cindy Schafer 375-6736
 Librarian: Cindy Schafer 375-6736
 Newsletter Editor: Rebecca Winter 895-0975
 Weaving Study Group: Julie Gerrard 342-8562
 Spinning Study Group: Lynn Ruggles 375-9172
 COE Study Group: Mary Berent 939-8906
 Vila Cox 323-7736

Websites

<http://www.handweavers-guild-boise.org>
<http://my.calendars.net/handweavers/>



Welcome to the Handweavers Guild of Boise Valley, Inc. The guild has been sharing its craft with the community for 35 years. Our stated purpose is to “carry on, study and foster the arts and crafts of handweaving, spinning and fiber arts.” The Guild meets from September through June on the first Saturday of the month. Generally, meetings are held at 11:30 a.m. at the Adelman House at the Idaho Historical Museum in Boise. Look frequently for details in this newsletter, or please contact any member for inspiration, or for answers to your questions.



Cece Stricklin, Al Hayden, Cynthia Newman and Vila Cox



Elly Young



Mary Berent, Leslie Ray, and Julie Gerrard



A Design Problem Offered a Challenge

Photos from the Karen Selk Workshop held March 14 - 16

“CRYSTAL BALL COLORS”

CHALLENGE 2008

Weave or spin colors that are sure to be the latest in style from Daryl Lancaster’s “Fabric Forecast” for Spring – Summer 2008. Daryl developed four color waves based on the increasing awareness of global warming and labeled them: 1. Lush Vegetation, 2. Sun-Baked Earth, 3. Rising Tides and 4. Steel & Glass. These color palettes can be found in Handwoven Sept. – Oct. 2008, pg. 78-81.

The challenge is to select one color palette and then weave or spin an entry, using a minimum of three colors up to a maximum of six from one palette. Beads, ribbons etc. may be incorporated into the piece. The fiber, yarn, or weave structure is to be of your choice, and though Daryl would encourage the use of environmentally friendly yarns and fibers, that is not a requisite for this challenge.

Additional items could be constructed from one of the other three color palettes, but colors from different palettes cannot be combined together in one item. Each completed item is to be displayed with a label showing the color palette that was chosen for that entry.

The name and color for each of the yarns in Daryl’s samples are listed by the yarn. The companies which sell those yarns are abbreviated and are listed on pg. 81 of the article in Handwoven. You may use these yarns or any other yarns that match your chosen colors.

All entries must be entirely your own work since last September.

Registration is due by Saturday August 30th. Finished items should be turned in by September 20th.

There will be 4 categories for prizes:

Flat handwoven items – includes yardage and hemmed or fringed pieces (scarves, towel and rugs)

Handspun skeins – must include at least 80% handspun yarn.

Finished items from handspun

Fiber Arts – non-flat handwoven fabrics (including clothing) or 3-dimensional items, such as baskets. Must include 75% handspun or handwoven.

Prizes will be awarded for each category: \$50 First Place - \$35 Second Place - \$15 Third Place

Entry Fees are \$5.00 for the first entry, \$2.00 each for the second and third entry (a maximum of \$9.00). Any additional entries from the same person are free, so please enter as many pieces as you wish.

Entry Form

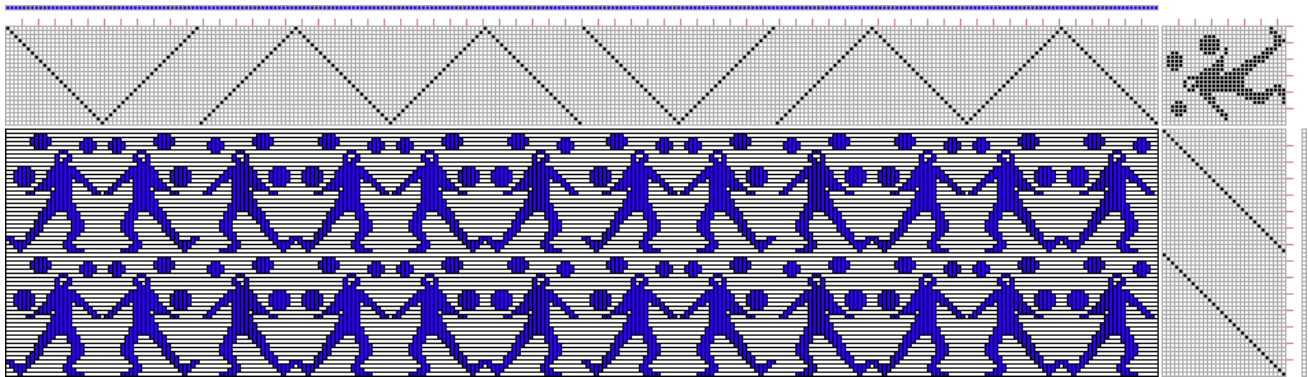
Name _____ Telephone Number _____

Address _____

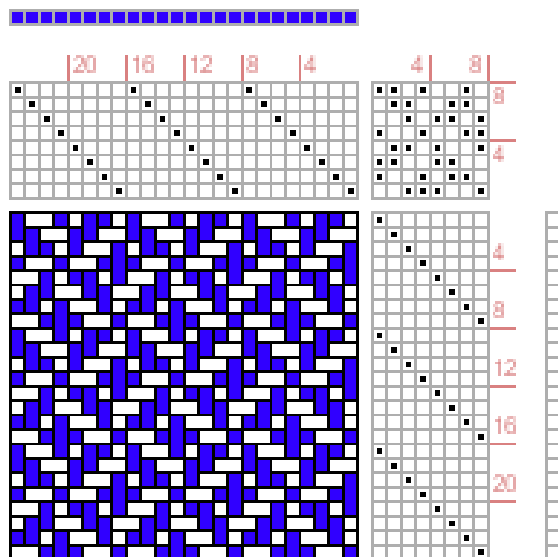
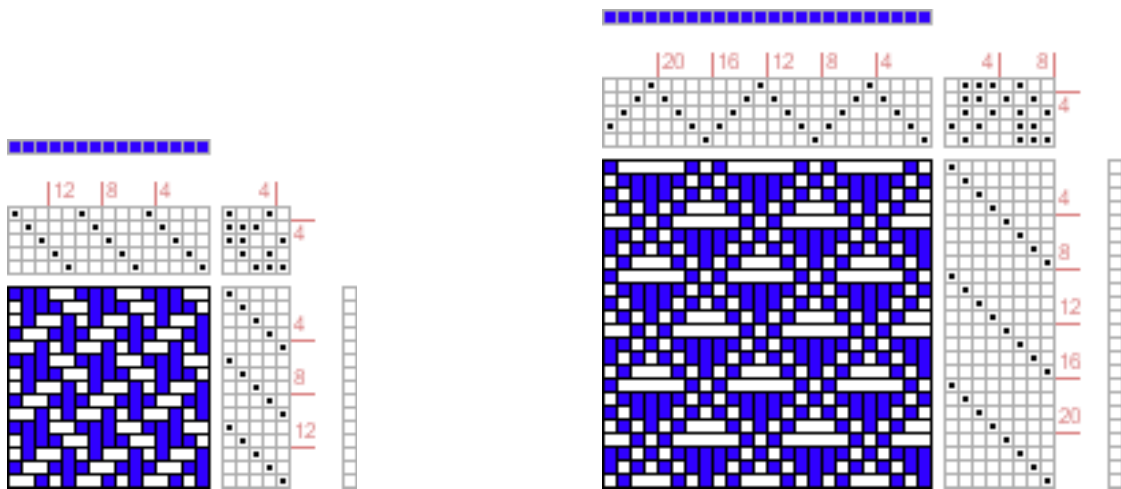
| Category | Description of Piece | Fee |
|----------|----------------------|-----|
| | | |
| | | |
| | | |
| | | |
| | | |

Submit form and entries to: Penny Schraufnagel, 2688 South Goshen Way Boise, ID 83709 342-1288

Draft Inspirations:



24 harness, 30 treadles



Connecting Threads
PO Box 6258
Boise ID 83707

The monthly newsletter from the



handweavers guild of boise valley, inc.

Newsletter Highlights and Please Remembers:

Dues are \$25.00. Come join us!!

Color Code for April: "Steel and Glass"

Some nice weaving websites from Lynn:

<http://www.vermontcrafts.com/members/CharubyStudios.html>

<http://web.mac.com/nealsue/iWeb/susan%20neal/silk%20scarves.html>

Enjoy!!

