

Connecting Threads

Handweavers Guild of Boise Valley

April, 2010

Calendar of Events

April 3, 2010 - Board Meeting

Moxie Java, 1122 S. Vista, Boise
10:00 am

April 3, 2010 - Guild Meeting

Boise Historical Museum,
Prospector Room
11:30 am - Business Meeting
12 noon - Social time
1:00 p.m. Program by **Cynthia Newman**
Weaving with Torn Silk Fabrics

April 8, 2010 - Spinning Study Group

At Maralyn Larson's Club House
6:30-8:30 p.m.

April 20, 2010 - Day Weaving Study Group

At the home of Lynn Ruggles
1 p.m.

May 1, 2010 - COE Study Group

Moxie Java, 1122 S. Vista, Boise
9:30 to 11:00 am

Election of Officers

Remember, we vote on the slate of new officers during the April meeting. If you cannot make it, you may mail in a signed ballot. Use the guild P.O. Box 6258, Boise, ID 83707. They will be collected just before the meeting.

The slate is as follows:

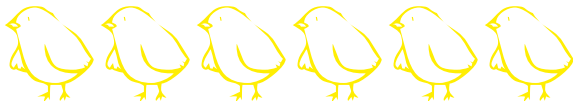
President - Cynthia Newman

Vice Presidents - Kathy McGowan
- Mitzi Meyers

Secretary - Janet Stanger

Treasurer - Irene Chandler

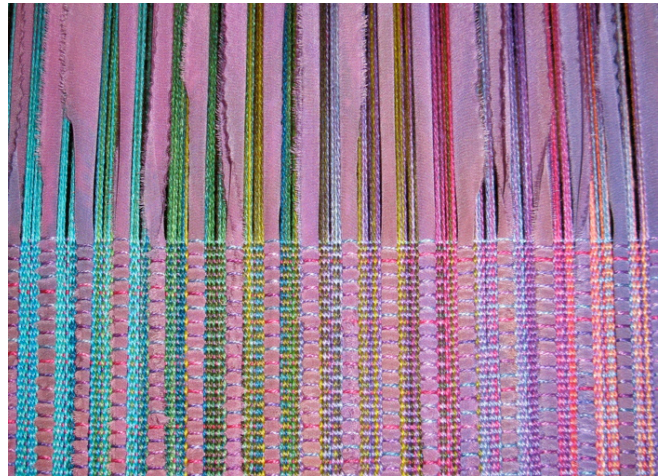
Membership Officer - Penny Schraufnagel



April Program: Weaving with torn silk fabrics - the evolution of an idea

I will talk about how one simple idea evolved from a tangle of silk threads to a soft fabric with exciting possibilities. I think that there is a value in working and re-working an interesting idea over and over, refining our ideas as we design new fabrics. Ann Sutton's books and contemporary Japanese textiles have been a source of inspiration.

◆ Cynthia



Cynthia's Warp

Reminder: 50 Ways to Weave Your Color With Ruby Leslie

Friday, Saturday and Sunday

March 26th, 27th and 28th

9 AM

Caldwell Public Library.

The room will be open starting at 8:30 on Friday to set up. See you there!





Informal Spinning Workshop

There will be a spinning workshop on April 17-18 at the Extension Office at 5880 Glenwood Street, Garden City, next to the Fairgrounds. The workshop will run from 10-4 each day. You do not have to be a guild member to attend.

This is a leaderless workshop with a focus on Drum Carding and Spinning Thick and Thin yarns. On Saturday morning, from 10-11, we will show you how to use a drum carder and will demo several different ways to create batts. If you aren't familiar with drum carding or have not used a drum carder before, please be there for the demos.

After the demo, you will be carding your own batts. There will be several carders available, and lots of fiber to play with. You will be able to card your own batts using the techniques that were demonstrated. If you don't have your own fiber to blend, please be willing to make a contribution for the fibers that you use.

After lunch on Saturday, from 1-2, we will show you how to spin several different Thick and Thin yarns. The Guild Challenge for Museum Comes to Life this year is Thick and Thin, so any skeins you spin will be perfect entries for the challenge.

If you aren't carding, we will have an area set up to spin and socialize.

Things to bring:

- ✓ Spinning Wheel and accessories
- ✓ Fiber of your own that you would like to card, such as odd ball colors, glitz, roving or top that isn't very interesting by itself. Please bring only clean (washed) fleece or fiber.
- ✓ Fiber to spin for Thick and Thin yarns, roving or batts.
- ✓ Lunch and beverage, and a snack to share. We will have hot water for coffee or tea.

Contact Lynn Ruggles (375-9172) for more information and to sign up for this event.

Guild Meeting Minutes

March 6, 2010

Attendance: Al Hayden, Lynn Ruggles, Julie Gerrard, Mary Berent, Penny Schraufnagel, Cynthia Newman, Pat Ann, Mitzi Meyers, Pat and Charlotte (friends of Mitzi), Irene Chandler, Katrina Duckett, Vila Cox, Marita Turner, Mary (friend of Marita), Cindy Schafer, Janet Stanger, Ruth Gildersleeve, Rebecca Winter, Maralyn Larson, Michelle Armstrong, Carol Freeman and Ivy DeHart.

President Al Hayden called the meeting to order.

Vice Presidents report: The vice presidents were not present, but Al reported that the warp chains for the Ruby Leslie workshop have been sent to participants.

Treasurer's report: Irene Chandler reported that the checking account balance is \$3205 with additions of \$75 in dues, \$2660 in workshop fees and \$270 balance from the Intensive. There was \$850.08 in expenditures this month.

Secretary's report: No report.

Librarian's report: Pat Ann will be adding Tencel dye samples from the 2006 Delightful Dyers group to the library. The library is currently housed in the "loom room" in the Adelman House.

Web Master: Vila Cox will be updating the web-site. Please check the web-site to make sure that the information that pertains to you is spelled correctly.

Newsletter Editor: Rebecca Winter said to let her know if you have any suggestions for the newsletter.

Sample exchange: Rebecca will send around the sign-up sheet for participation in the 2010-2011 sample exchange. Each participant will need to weave or spin 45 samples.

Spinning group: Lynn Ruggles reported that the spinning group meets once a month on the 2nd Thursday of the month from 6:30 to 8:30 p.m.. Everyone is welcome to come, sit, spin and share.

There is a spinning workshop scheduled for April 17th & 18th. The carding demonstrations will be from 10 to 11 am on Saturday and the thick and thin spinning demonstration will be from 1 to 2 p.m. on Saturday afternoon.



COE study/support group: Mary Berent said that the COE group meets every other month at Moxie Java on Vista to share and show support in a non-threatening way. All are welcome.

We will be having a celebration for Lynn Ruggles for successfully completing her Level I COE in Handspinning. The get-together will be April 10th at 1 p.m. at Penny Schraufnagel's house. Lynn is the 36th recipient of the Handspinning COE Level 1.

Challenge committee report: Vila Cox reported that the Challenge will be September 25, 2010 and the theme is "Thick and Thin."

The slate of officers for the 2010-2011 year has been selected as follows:

President	Cynthia Newman
Vice Presidents	Kathy McGowan and Mitzi Meyers
Secretary	Janet Stanger
Treasurer	Irene Chandler
Membership	Penny Schraufnagel
Librarian	Katrina Duckett (non-elected position)

Al would like to encourage all of the new candidates to review the by-laws and job descriptions on the web-site. We will vote on the slate of officers at the April meeting.

Gold bag: The gold bag went from Marita Turner to Vila Cox and the bag contained roving (from Kathy Haneke) and banana chips.

Show and tell:

Rebecca Winter shared 2 new ATC (artist trading cards 2-1/2" x 3-1/2") that she had quilted with foundation paper piecing. She also showed a 20/2 cotton fabric woven in shadow weave with a painted warp and a hand-dyed weft, the yardage showed different shadow weave treadlings.

Lynn Ruggles was involved in an unofficial "Olympic challenge," where the knitter casts on their knitting during the opening ceremony and knits during the Olympics and casts off during the closing ceremonies. Lynn showed a hand-spun (pre-spun before the Olympics) and hand knit alpaca lace shawl, she used a Nancy Bush pattern with adjustments. Lynn said that she received a *gold medal*.

Mitzi Meyer showed 2 rayon chenille scarves that she had woven in purple and black stripes. Mitzi used yarn from her collection.

Mary Berent was wearing the sweater that she knit during the "Olympic challenge." It was a blue and green striped sweater knit in stockinet.

Mary is a member of the Cross Country Weavers and her assignment this year during the "poker draw" was to weave an item with 3 secret instructions. (1) Bright colors, (2) spot weave and (3) man-made materials. Mary wove a towel using all of these instructions.

Penny Schraufnagel lives with, an Idaho Vandals fan, so she set out to weave a black and yellow scarf for him for his birthday, but he walked into the studio and saw her weaving the scarf, so it was not a secret after all. Penny used yarn from White House Yarns in Ontario.

Pat Ann shared a rug woven with Pendleton rug selvages, sett at 8 epi; she wove 11 rugs this winter.

Katrina Duckett shared her 7 week old angora rabbits, several members took turns holding them, and they were very soft.

The program:

"Spinning for Weaving" by Lynn Ruggles

Lynn talked about the difference between woolen and worsted yarns and what to expect from these yarns when you are weaving with them. The spinning technique was covered as well as calculating the amount of yarn needed to complete a woven project. She passed around samples of hand-spun yarn and fabrics that she had woven with the yarn. It was a very informative program.

◆ Respectfully submitted, Cynthia Newman,
Secretary



Ramblings of the President

Another great meeting and program.

Thank you Lynn for the excellent presentation of matching handspun with handwoven. It sure shows that the planning of a successful project has many steps.

Remember, we vote on the slate of new officers during the April meeting. If you cannot make it, you may mail in a signed ballot. Use the guild P.O. Box 6258, Boise, ID 83707. They will be collected just before the meeting.

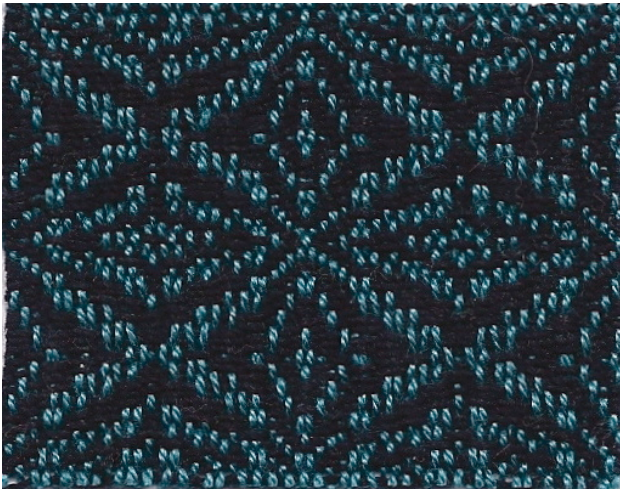
Cynthia will be presenting the program this month. Don't miss it.

Also there should be lots and lots of show and tell from the workshop.

❖ AI

Monthly Sample Exchange

The samples available to members at the April 3rd meeting are from Julie Gerrard.



Warp - 12/2 tencel teal
Weft - 10/2 cotton black
Sett - 25 epi

~~~~~

Remember to pull your samples from the Sample Exchange Box at each regular Guild meeting. And remember to check your name off the list in each file folder. If you would like participate or have questions, contact the Sample Chair, Rebecca Winter.



## We Remember

*Linda Mercer, 7-13-49 to 1-23-10*

The Poem from her Memorial Service:

"Life should not be a journey to the grave  
with the intention of arriving safely in an  
attractive and well preserved body,  
but rather to skid in sideways,  
chocolate in one hand,  
wine in the other,  
body thoroughly used up,  
totally worn out and screaming,  
'WOO HOO', what a ride!"

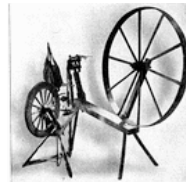
❖ Unknown



## Study Group News

### ♥ Spinning Study Group

The Spinning Study Group will meet at Maralyn Larson's clubhouse on Thursday, April 8 from 6:30-8:30 p.m. This is the Annual Spinning in April Event! Don't miss it! For directions, contact Lynn Ruggles, 375-9172.



### ♥ Day Weaving Study Group

The Day Weaving Group meets on the third Tuesday at 1 p.m. at the homes of participants. Each participant chooses what they want to study. If this is something you are interested in, come join us.

The meeting on April 20, will be at the home of Lynn Ruggles. Call Rebecca at 859-2822, for more information.

### ♥ Certificate of Excellence (COE) Study Group

The COE study group will meet next on Saturday, May 1. We will meet at the Moxie Java on the corner of Vista and Kootenai in Boise. We will meet from 9:30 am to 11:00 am. All are welcome to participate. Call Mary Berent for more info. at 939-8906.

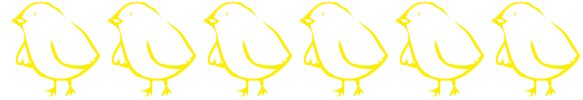


## Guild Officers and Chairs

President: Al Hayden 343-7300  
Vice-presidents: Cece Stricklin 387-2641  
Kathy McGowan 939-7215  
Secretary: Cynthia Newman 541-523-2451  
Treasurer: Irene Chandler 467-4997  
Membership Officer: Penny Schraufnagel 342-1288  
Librarian: Pat Ann 452-3181  
Newsletter Editor: Rebecca Winter 859-2822  
Weaving Intensive Study Group: Al Hayden  
Spinning Study Group: Lynn Ruggles 375-9172  
COE Study Group: Mary Berent 939-8906  
Day Weaving Study Group: Rebecca Winter  
Web Master: Vila Cox 323-7736

## Websites

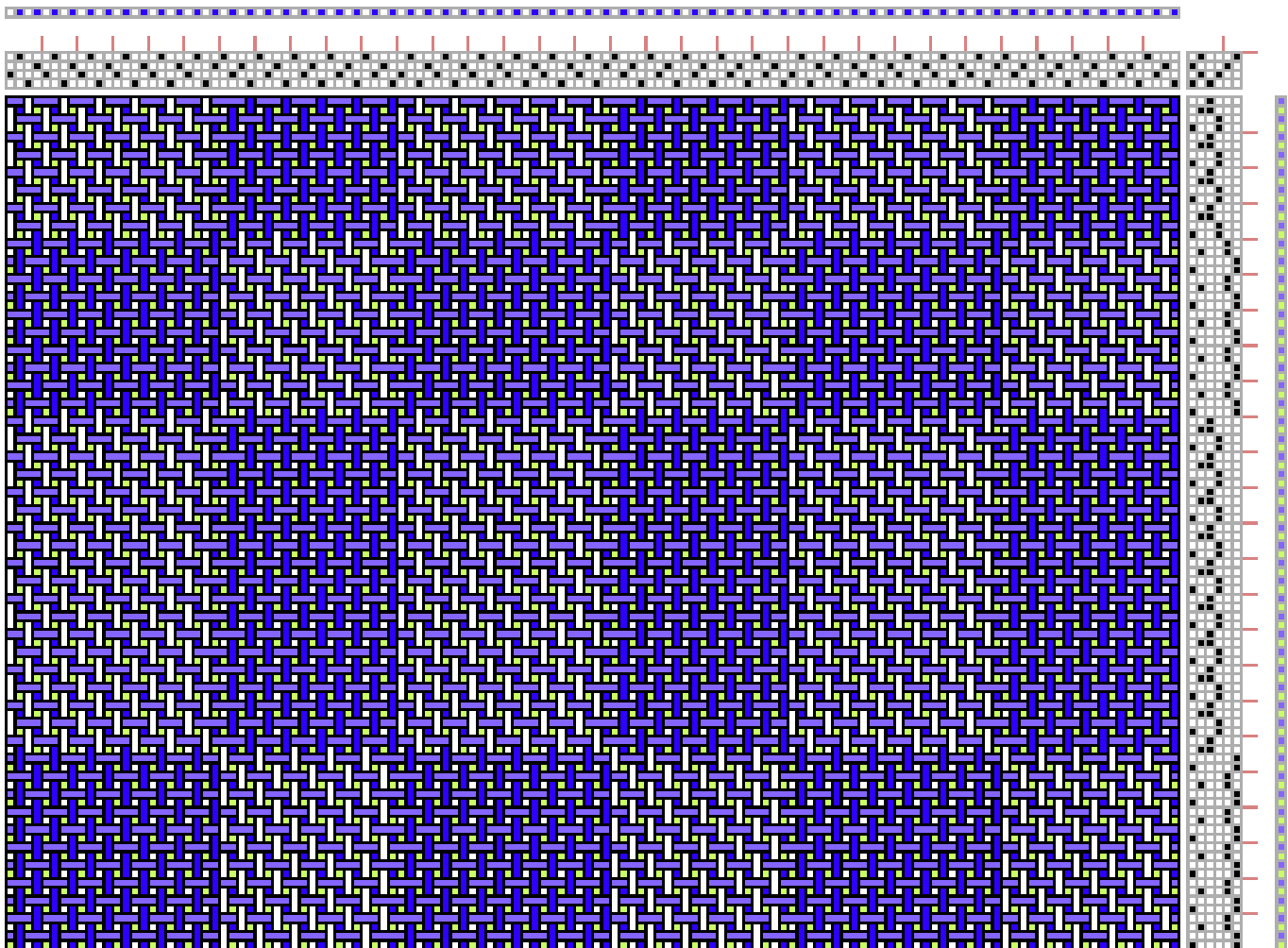
<http://www.handweavers-guild-boise.org>  
<http://my.calendars.net/handweavers/>



## Draft Inspirations

The following drafts are from <http://www.handweaving.net> You can go there and enter the number to see all the specifics about each draft, as well as download a .wif file. Here's some inspiration for the next Weaving Intensive, on Double Weave.

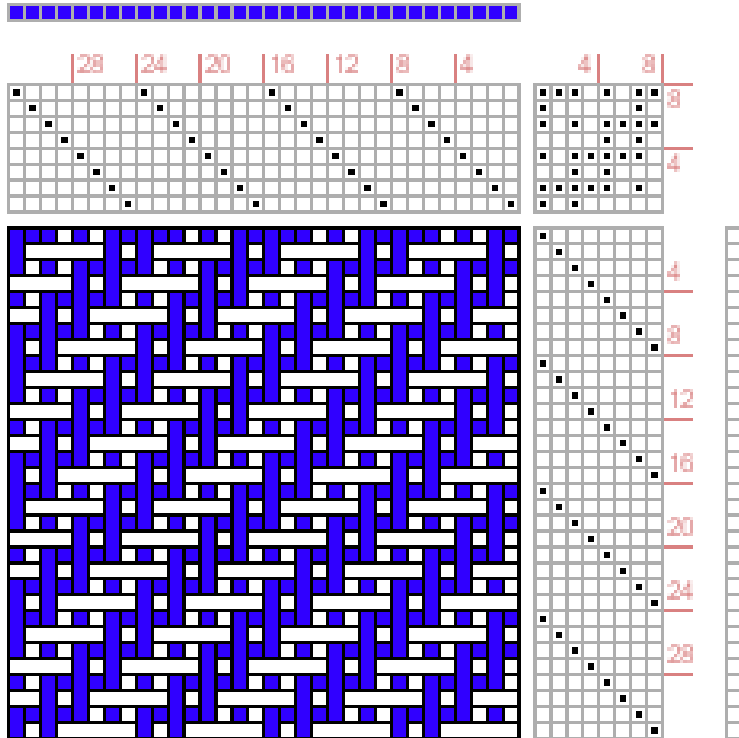
4 checkerboard double weave, 6 treadles: by Bonnie Inouye, Draft #61536



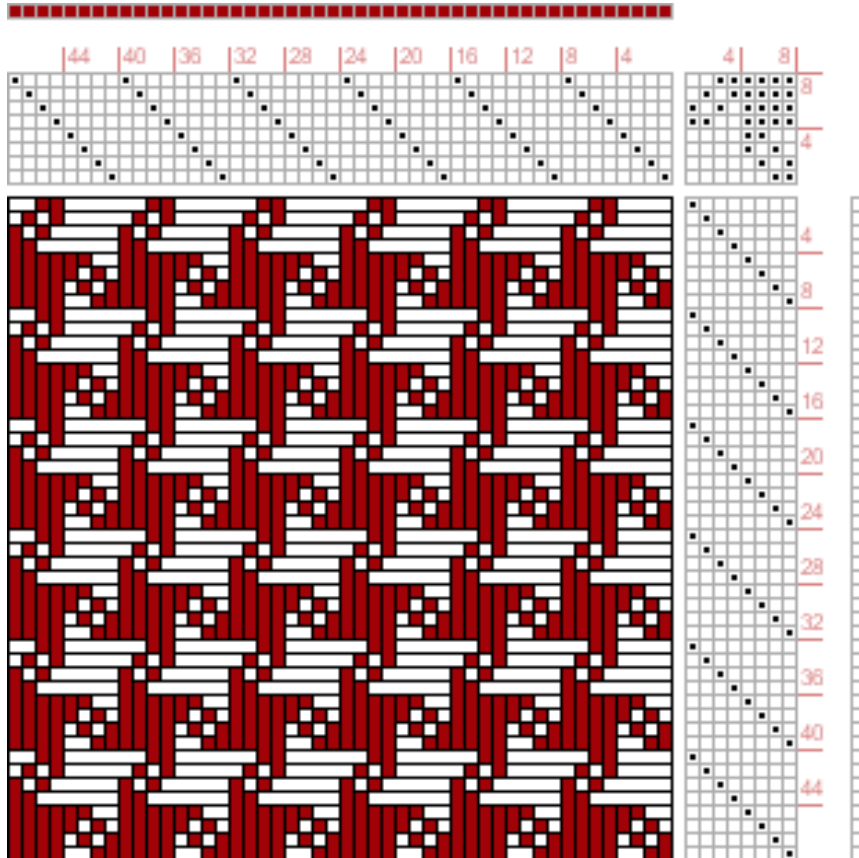
And, oh my gosh, here are some interesting Double Weave drafts from a Japanese book. Go into the web site and do a Draft Search by the category of Double Weave. Check them out!! There's even a star I may have to try.

♣ Your Editor.

Draft #41794



Draft #41846



# Thick & Thin - Challenge 2010

For the 2010 Challenge we are going to mix things up a bit, that is, mix up the yarns you choose for your weaving projects. Each woven entry must use an obvious combination of thick and thin yarns. The thick and thin yarns need to stand out as part of the design process. So let's step out of the uniform world and try something new.

It's time to quit trying for the perfectly even yarn. Handspun entries need to be slubby or have a thick and thin element of some kind. So try a new technique or spin up an old favorite that will be lumpy, bumpy, and oh so unique.

Some weave structures are traditionally woven with thick and thin yarns. What new ideas will you come up with for our Challenge this year? It is a great time to try something new and push the limits of tradition.

All entries must be an obvious mixture of thick and thin and must be entirely your own work, finished since last September.



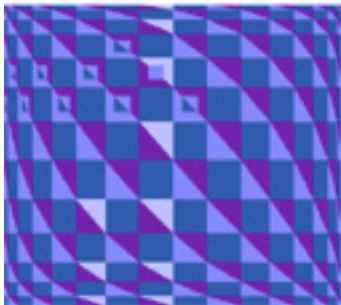
There will be four categories for prizes:

1. Flat handwoven items - includes yardage and hemmed or fringed pieces (scarves, towels and rugs). A mixture of thick and thin threads must be obvious in each handwoven item.
2. Handspun skeins - must be obviously thick and thin, or a thick strand plied with a thin strand.
3. Finished items from handspun yarn - must be made from handspun yarn that would qualify as a handspun skein this year or a combination of thick and thin handspun yarns.
4. Fiber Arts - non-flat handwoven fabrics (including clothing) or 3-dimensional items, and must be made of at least 50% fabric or handspun that would qualify in their respective categories this year.



Prizes for each category: \$50 First Place - \$35 Second Place - \$15 Third Place  
Registration is due by Saturday, August 28th ~~~ Finished items are due by September 20th  
Museum Comes to Life is September 25th

Entry Fees are \$5.00 for the first entry, \$2.00 each for the second and third entry (a maximum of \$9.00). Any additional entries from the same person are free. Enter as many pieces as you wish.



## "Through Thick and Thin"

**Meaning:** Through all forms of obstacle that are put in one's way.

**Origin:** 'Through thick and thin' is one of the English language's older expressions. It is venerable enough to date from the times when England was still a predominantly wooded country, with few roads and where animals grazed on what was known as wood pasture, i.e. mixed woodland and grass. The phrase originated as "through thicket and thin wood."

<http://www.phrases.org.uk/meanings/through-thick-and-thin.html>



Entry Form:

Name: \_\_\_\_\_ Telephone Number: \_\_\_\_\_

Address: \_\_\_\_\_

email: \_\_\_\_\_

Category: \_\_\_\_\_

Description of Piece: \_\_\_\_\_

Fee Enclosed: \_\_\_\_\_

Submit form and entries to: Vila Cox 2668 N Westminster Pl Boise ID 83704 323-7736

Connecting Threads  
PO Box 6258  
Boise ID 83707

The monthly newsletter from the



handweavers guild of boise valley, inc.

### April Newsletter Highlights:

- ⦿ Program: Weaving with torn silk fabrics - the evolution of an idea
- ⦿ Election of Officers: See page 1.
- ⦿ Spinning Opportunity: See page 2.
- ⦿ Check out this year's Challenge: See page 6.

