



Connecting Threads

Handweavers Guild of Boise Valley
April, 2014

April Program: Which Color and Why, Presented by Katzy Luhring

For the April Program you will see and hear about the wonderful color palette that is created and offered by Lunatic Fringe. The Tubular Spectrum Color Wheel is based on the Munsell Color Theory. We are excited to have Katzy present this program.

Calendar of Events

April 5, 2014 - COE Study Group

10:00 to 11:00 am
Rebecca's Studio House

April 5, 2014 - Guild Meeting

Rebecca's Studio House, 1012 East Third St., Meridian
11:30 am - Business Meeting
12:30 am - Social time
1:00 p.m. Program: **Which Color and Why,**
by Katzy Luhring

April 5, 2014 - Tapestry Study Group

Right after the meeting of the Guild

April 8, 2014 - Bobbin Lace Study Group

6:30 pm - 8:30 pm
Rebecca's Studio House

April 10, 2014 - Spinning Study Group

6:30 pm - 8:30 pm
Rebecca's Studio House

April 10, 2014 - Day Weaving Study Group

1:30 pm - 3:00 pm
Home of Greta Ankeny



Challenge 2014 -- Tail of Two Yarns

Now that the Intensive and Interlacement Workshops are behind us it is time to really get serious about our project(s) for the Challenge.

Look at the full page description on page 6 for all of the details. Two (or more) different yarns, size or fiber for weaving and two (or more) different fibers or yarn sizes combined some way for spinners.

Please make your choices so they are readily apparent in the finished item. We also want to have samples of your source yarns or fibers to attach to the finished item.

We will have some samples for inspiration at the April guild meeting.

❖ The Challenge Committee

Notes From Your President

Talk about weaving inspiration. The Interlacement Motif workshop with Susan Wilson was definitely filled with ideas for weaving projects. She gave us a lot to think about and techniques for designing interlacement motifs which is a woven structure that creates designs. It was great. I will bring my notebook from the workshop to the April meeting so those of you who were unable to attend may see what the group did at the workshop.

We will also be celebrating Lynn Ruggles successful completion of her Level II Certificate of Excellence in Handspinning. Please join us if you are available on Saturday, March 29, at 1 p.m. Lynn's topic of study was Color Blending to Achieve Smooth Shading.

Remember we will be meeting at Rebecca Winter's Studio House in April. If you have one, please bring a folding chair.

❖ Your President, Julie Gerrard

Slate of Officers for 2014 - 2015

The election will take place at the April meeting.

President - Anne Oglevie

Vice-Presidents - Pat Ann & Kathy Shiflett

Secretary - Janet Stanger

Treasurer - Melanie Smith

Membership - Irene Chandler

UFO Program

The UFO (Un-Finished Object) program is in full force again this year!! Same "rules" as last year. Bring the unfinished object to a regular meeting and give a short explanation. Then fill out a short form registering your intentions. Then bring the finished thing-of-beauty to a regular meeting and collect your prize for finishing it. (Chocolate always Available.) An easy and fun way to clean out those old projects.

◆ Ivy DeHart & Pat Ann

COE Judging Planning Committee

The COE will be held between October 16th and 23rd. Exact dates will be set depending on travel arrangements and other schedules. Please set aside that week if you are able to help with the event. We need all the volunteers we can get! So if you have an idea of how you would like to contribute, please contact the chair person who would be overseeing that area.

- * Mary Berent will coordinate the scribes and people assisting the judges.
- * Julie Gerrard will coordinate housing and transportation for the judges and HGA officials
- * Melanie Smith will coordinate meals
- * Lynn Ruggles will coordinate the equipment needed.

If you have questions, please contact Vila Cox, I'm coordinating the coordinators.

◆ Vila Cox

Other Events of Interest

❖ The Cats away so the Mice will Spin!

So it turns out that the majority of my family will be gone on my Birthday April 26th. Never fear I can come up with a way to celebrate. You are all invited to enjoy a fun day of spinning and food and I am sure some cake at my house. Weather permitting we will spin outside on my front deck. So please bring a folding chair, a potluck item and some fun fiber to spin on your wheel or spindle. The fun starts at 10ish and goes until the last person heads home. Please RSVP, so that I know you are coming and I can give you directions to my house. Melanie - yarnsntreads@aol.com

❖ Weaving Fiber and Equipment Sale

Friday, April 11 and Saturday, April 12 - 9-noon
(and by appointment)

4173 N Beaham Pl, Meridian, ID 83646

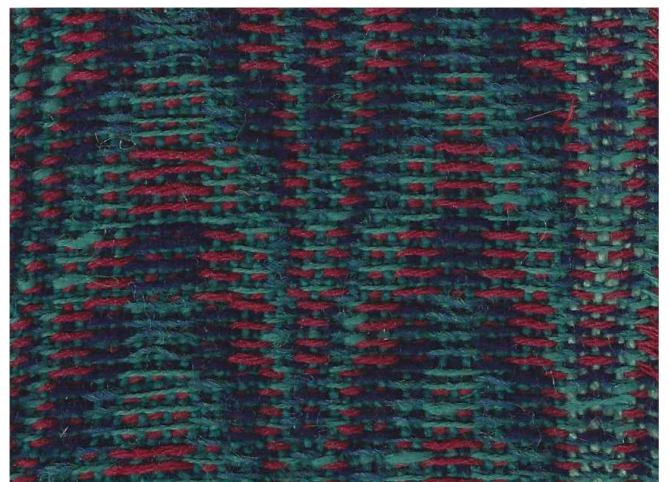
It is time to move, and I need to sell a considerable amount of fiber and equipment to prepare. Cones and hanks of cottons, wools, blends, exotics from here and Europe will be available at below wholesale prices. Books, videos, and misc items that were part of my studios in Scotland and Boise will also be for sale.

If you have any questions, please contact Kim Cran at 887-3860 (kim.cran@gmail.com)

April Sample - Bargello

This month's sample was woven by Irene Chandler. That's right, woven Bargello or Flame Point. Normally associated with needlepoint, this pattern has intrigued me for years. I can visualize this in Tencel for a stunning scarf. And it only takes four shafts! With Irene's variety of crafts, this seems fitting for her to weave. Thank you very much.

◆ Al Hayden



Sample Exchange Box

Members may pull samples from the **Sample Exchange Box** at each regular guild meeting. And remember to check your name off the list in **each** file folder. If you would like to participate or have questions, contact the Sample Chairperson.

Also, remember, there are samples from last year that are available to anyone toward the back of the box.

Study Group News

♥ Spinning Study Group and Library Night

For the month of April we are going to do something a bit different. On **April 10** the spinning study group will be **meeting at Rebecca's Studio House** instead of our usual place. The Library will also be open for members who would like to either check something in or out. Our theme will be our favorite fiber. So bring your spindle, wheel, your favorite fiber, or any other project you would like to work on. It might also be a good idea to bring a folding chair. The fun starts at 6:30. If you have any questions please email Melanie at yarnsnthreads@aol.com.



♥ Certificate of Excellence (COE) Study Group

The Study Group will meet before the regular meeting on Saturday, **April 5** at 10:00. The meeting will be held at Rebecca's Studio House. All are welcome to join in. For information call Mary Berent, 939-8906.

♥ Day Weaving Study Group

The Day Weavers will meet on Tuesday, **April 15**, at 1.30pm at the home of Greta Ankeny in Nampa. Please call or email Greta for directions. (208) 318-6028 or email Gretanken@gmail.com



♥ Tapestry Study Group

The Tapestry Study group will meet after the regularly scheduled guild meeting on **April 5**. Bring your tapestry loom and some weft yarn to weave. We challenged everyone to set up the loom with 2 inches for a small sampler and then pick out a design for the other portion of your loom. Stained glass patterns make really nice tapestry designs. Pick one that isn't too fussy.

♥ Bobbin Lace Study Group

We meet on the second Tuesday of every month. The next meeting will be **April 8**, at Rebecca's Studio House at 6:30 pm. Call Vila for information, 323-7736.



Book Review

Weaving a Life, The Story of Mary Meigs Atwater

Compiled by Mary Jo Reiter

Edited by Veronica Patterson

This is a fascinating story! It is just amazing that with all the other things Mary Meigs Atwater did that she found any time to weave at all—or sleep! She started her life as a well-to-do daughter of a Keokuk, Iowa banker. She went to finishing school in the east, then on to several years of art school in Paris. She married a mining engineer and his job took them to Colorado, Bolivia, Mexico and Montana. They lived a life of adventure, danger, excitement and beauty as pioneers in what was still the 'wild west'. She was born in 1878 and most of the book tells in an autobiographical way of her life between 1898 and 1928. This is not a book about weaving, but about a wonderfully interesting woman who was very instrumental in kick-starting handweaving in the United States in the early part of the twentieth century. Highly recommended.

◆ Submitted by Mary Berent

Tapestry Weaving Workshop and Retreat with Pam Patrie

There will be a two day workshop on tapestry weaving it will be designed for the individual by Pam. Everyone is welcome. If you ever wondered what tapestry weaving was all about this is your opportunity to find out? Pam has looms available if you don't have one yourself. It will be held at the home of Anne Oglevie in Weiser on June 28th and 29th. There is limited accommodation available. Food will be provided for everyone. The cost will be \$130. It will start Friday with a social evening then workshop on Saturday and Sunday. There is limited space in this workshop so register early.

Pam will contact everyone coming to the workshop so she can tailor your tapestry experience for the weekend. To check out her website go to pampatriestudios.com.

Contact Pat Ann directly by phone or email to register. Email patann@fmtc.com. Phone number (208) 337-2126.

Officers and Chairs

President: Julie Gerrard 342-8562

Vice-presidents: Ivy DeHart 939-2335 & Pat Ann 208-337-2126

Secretary: Janet Stanger 377-0746

Treasurer: Melanie Smith 385-0085 or cell 608-0101

Membership Officer: Irene Chandler 318-8182

Librarian: Judy Tallent 208-615-1857

Web Master: Vila Cox 323-7736

Newsletter Editor: Rebecca Winter 859-2822

Sample Exchange: Al Hayden 343-7300

Spinning Study Group: Melanie Smith 385-0085

Weaving Intensive Study Group: Mary Berent 939-8906

COE Study Group: Mary Berent 939-8906

Day Weaving Study Group: Anne Oglevie 208-994-2725

Bobbin Lace Study Group: Vila Cox 323-7736

Website

<http://www.handweavers-guild-boise.org>

Photos from the Interlacement Motif Workshop by Susan Wilson



Upper left - Susan Wilson and Kathy McGowan; Upper right - our samples; Lower - attendees included Lynn Ruggles, Rena Lute, Rebecca Winter, Kathy Shiflett, Mary Berent, Kathy McGowanAnne Oglevie, Ivy DeHart, Cindy Schafer, Cece Stricklin, Al Hayden, Julie Gerrard and Pat Ann.

2014/2015 Budget

As you can see there are some big changes to our budget for next year. The changes are in red so that you can more easily see them. The biggest is the budget for the COE judging that our guild will be hosting this next fall. We are not totally sure what the final expense will be but after meeting with the planning committee I really feel we won't be going over the allotted \$600. The other big change is we have added the yearly cost of our insurance, which is new for us and hasn't been in the budget before.

As you can see we have budgeted more than we project to bring in. Which means we will have to tap into our saving account. I don't see this as a regular occurrence but hopefully a onetime only event. There are also a few things we can do to help offset the budget. Invite friends to join and become members, buy and sell items at our annual guild sale, rent equipment and lastly join in on both the challenge and intensive. All of these are great and fun ways to help our guild to be the great group of spinners and weavers that we are. If you have ANY questions or concerns please give me a call. Melanie 608-0101.

| <u>Handweavers Guild of Boise Valley</u> | | Subscriptions | \$102 |
|---|----------------------|-----------------------------|-----------------------|
| <u>Proposed budget for 2014-2015</u> | | | |
| <u>Income</u> | <u>Yearly</u> | | |
| Advertising | \$60 | Workshop expenses | \$2500 |
| Challenge entries | \$60 | Workshop-intensive expenses | \$400 |
| Guild Sale | \$100 | COE Party Expenses | \$250 |
| Interest | \$2.00 | COE Judging expenses | \$600 |
| Membership dues | \$1100 | <u>Total</u> | <u>\$ 5822</u> |
| Miscellaneous | | | |
| Workshop fees | \$2900 | | |
| Workshop-intensive | \$400 | | |
| <u>Total</u> | <u>\$4620</u> | | |
| <u>Expenses</u> | <u>Yearly</u> | | |
| Challenge prizes | \$400 | | |
| Challenge supplies | \$60 | | |
| Directory expenses | \$100 | | |
| Membership expenses ANWG/HGA | \$75 | | |
| Study group/ UFO project | \$50 | | |
| Insurance – Library, building | \$400 | | |
| Library | \$200 | | |
| Misc/memorials | \$20 | | |
| Newsletter Expenses | \$175 | | |
| P.O. Box rent | \$70 | | |
| Postage | \$50 | | |
| Programs | \$50 | | |
| Meeting room rental | \$320 | | |



Tail of Two Yarns

This is a tail of two different yarns that joined together to make a beautiful finished piece.
The two (or more) yarns that gathered together were of different pedigrees.

Some were **LARGE**

some were small.

Some were from one kind of plant
some from another kind.

And then there were those from various critters.

In each finished piece there was a something from two different pedigrees.

Two different sizes of one or more fibers

Or

Two different fibers

(two plants)

or

(two critters)

Or

(one plant and one critter)

The same tail goes for those crafty spinners.

Two different sizes of one or more fibers

Or

Two different fibers

(two plants)

or

(two critters)

Or

(one plant and one critter)

Plied, Cabled, Blended or whatever else may apply.

The Fine Print

The two different yarns need to be easily seen

Made by you this year (Nov 2013 – Sept 2014)

Short pieces of each yarn to be supplied with finished item

Same for spinners (yarn/fiber)

Challenge 2014

Connecting Threads
PO Box 6258
Boise ID 83707

The monthly newsletter from the



handweavers guild of boise valley, inc.

