

# Connecting Threads

Handweavers Guild of Boise Valley  
April, 2022

## ~April Program: Thai/Indonesian Textiles - A Micro Journey of Thailand's Textiles, Then and Now, by Fran Yuschak

The April program will be about a discovery journey on how Thailand is answering the call in keeping their heritage of textiles alive. Fran will be bringing some contemporary textiles for members to study and admire.

◆ Connie Griffin & Mary Berent, Vice Presidents

### Calendar of Events

#### **Regular Meeting:**

April 2, 2022

11:30 a.m. ~ **Election of Officers & ~ Program: Thai/Indonesian Textiles, by Fran Yuschak**

At the First Congregational Church of Christ,  
2201 Woodlawn, Boise, in the Banquet Room  
Or Join the Meeting via Zoom.

Look for the link via email or in groups.io [Here](#).

#### **Workshops:**

April 22, 23 & 24, 2022 ~ Color in Composition,  
by Cynthia Newman

May 13, 14 & 15, 2022 ~ Understanding Twist,  
by Lynn Ruggles

#### **Study Groups:**

April 12, 2022 ~ Bobbin Lace

10:00 a.m. to 12 p.m. ~ At Raelene Viste's home

April 19, 2022 ~ Day Weaving Study Group

10:30 a.m. ~ At Jenni Jimmerson's

April 21, 2022 ~ Tapestry Study Group

7:00 p.m. ~ Via Zoom and TBA

#### Thursday Fiber Friends Zoom

2:00 p.m. ~ Every Thursday

Request the Zoom link from Jinks Hunter

March 29, 2022 ~ Garment Study Group

10:30 a.m. ~ At Lunatic Fringe Yarns in Fruitland

Carpooling will ensue for this meeting &  
masks are required.



Textile from Thailand



### Workshop ~ Understanding Twist, by Lynn Ruggles

Sign up now. Here is your chance to participate in a workshop given by one of the very few Master Spinners in the world, and by a person who is also an excellent teacher. See the flier later in this issue of the Newsletter!

◆ Connie Griffin & Mary Berent, Vice Presidents

## Election of Officers for 2022 - 2023

According to the Bylaws of the Guild, our elections need to be conducted in a very specific way. You can read about it yourself at the Guild website, click on 'Policies,' [HERE](#). The nominating committee was appointed and announced in January. That committee, Mary Berent, Mitzi Meyers, and Julie Gerrard, assembled a proposed slate of officers. With permission from the proposed officers, the slate was presented at the March meeting.

The slate of proposed officers, along with the date and time of the election, are to be published in this Newsletter. At the April regular meeting, we will vote by written ballot, either for the whole slate or against the whole slate—yes or no, very simple! If you are unable to be present for the voting at the April meeting, you may send a signed paper absentee ballot, just 'yes' or 'no' to the Secretary, Sally Johnston, prior to the meeting. The majority vote of the members present, plus those members casting absentee ballots determines the outcome.

### **Slate of Officers:**

President - Rebecca Winter  
Vice Presidents - Barbara Redman &  
- Christine Brady  
Secretary - Sally Johnston  
Treasurer - Mitzi Meyers  
Membership Officer - Connie Griffin



- ◆ Mary Berent, Vice President & Nominating Committee Chair

## From Your President

Here is a quote from Annie Albers from the Preface of her book called *On Weaving*:

"Though I am dealing in this book with long-established facts and processes, still, in exploring them, I feel on new ground. And just as it is possible to go from any place to any other, so also, starting from a defined and specialized field, can one arrive at a realization of ever-extending relationships.

Thus tangential subjects come into view. The thoughts, however, can, I believe, be traced back to the event of a thread."

Oh, I love that phrase - "**the event of the thread.**" How do you trace your work back to this event? Did your thread occur from a beautiful fleece, a cone of yarn, a thought process?

What is your event of the thread?

And click on the link for an interesting blog about some alternative yarns, including banana yarn and milk yarn - [Here](#). Perhaps some of these will participate in your event.

- ◆ Rebecca Winter, President

## Sample Exchange

Cindy Schafer has provided the handwoven sample for April. It is a draft from Vila Cox's challenge. Warp is maroon 10/2 cotton and weft is turquoise 10/2 cotton sett at 18 epi. It is an 8-shaft draft woven tromp as writ.

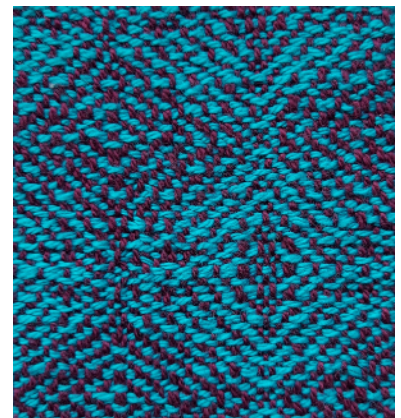
- ◆ Julie Gerrard, Sample Chair



## Tapestry Study Group

Monthly meeting is on the 3rd Thursday at 7PM. The meeting is held in person and if WIFI is available, the meeting will also be available via zoom. The April meeting will be on April 21. Location will be announced to the guild via groups.io email. Curiosity and questions are always welcome...it makes us all better informed. Come join us on the journey!

- ◆ Cindy Schafer, Study Group Chair



### Day Weaving Study Group

Day Weaving will be meeting at Jenni Jimmerson's home in April. The date is Tuesday, April 19, 10:30 am. Jenni's address can be found in the Guild Directory. All Guild members are welcome. Bring your projects and questions.

- ◆ Jenni Jimmerson, Study Group Chair

### Garment Study Group

Garment Study group will be meeting next on March 29, 2022, at, 10:30 a.m. We plan to meet at Lunatic Fringe Yarns in Fruitland. Please Note: Masks are required.

Consider attending if you have created a garment, want help planning a garment from your handwoven fabric, or merely have an interest in creating garments. This group will provide support and encouragement to help you along your way.

- ◆ Greta Ankeny, Study Group Chair

### Thursday Fiber Friends Zoom

This is a great way to just hang out at home, show each other what we are working on, ask about project issues, inspire, encourage, and laugh. Hope you'll join every Thursday at 2:00 pm. Request the Zoom link from Jinks Hunter.

- ◆ Jinks Hunter, Study Group Chair

### Bobbin Lace Study Group

The Bobbin Lace group will meet at Raelene Viste's April 12th at 10:00 a.m.

- ◆ Vila Cox, Study Group Chair



### Thank you for the Program about Saddle Blankets

We had another great program presented by Linda Morton-Keithly in March. It is logical, but a little surprising, there are specific requirements for producing blankets for horses. For example, there should be no ridges in the textile, which could cause injury to the horse. All of this was very interesting. Thank you for the great program.

- ◆ Rebecca Winter, President



### Meeting and Programming Information

The Yarn and Equipment sale will be in June this year, not May. The May program will be given by Lynn Ruggles who will be here from Arizona to teach our 3 day spinning workshop—see flyer in this newsletter!!! The May program will be, Plant Fibers for Spinning and Weaving.

- ◆ Mary Berent, Vice President



## Proposed 2022-2023 Budget

### Income

Newsletter fee	\$40
Advertising	60
Equipment rental	50
Guild Sale	100
Interest	10
Membership/dues	2100

**Total Income** **\$2360**

### Expenses

Equipment purchases	\$150
Library Books	150
Directory Expense	150
Library Expense	100
Meeting & Library room rental	520
Memberships ANWG/HGA	130
Hospitality	50
Misc./Memorials	50
Outreach/prom mat.	100
Newsletter exp	75
P O Box rent	190
Program Expense	70
Liability Insurance	275
Study Group Exp	50
Subscriptions-magazines	150
Zoom License	150

**Total Expenses** **\$2360**



# LYNN RUGGLES, MASTER SPINNER UNDER- STANDING TWIST

**A Workshop Presented by  
The Handweavers Guild of Boise Valley**

As spinners, we all know that twist holds fibers together to create yarn. But how much twist do you need? There are many different fibers from all the various breeds of animals such as sheep, goats, camels, and alpacas, as well as insects, and natural and manufactured fibers from plants.

In this class we will play with fibers as we talk about twist. You will learn how to set up your wheel for the yarn you'd like rather than the yarn you always spin, how to calculate spinning ratios, how to spin a consistent yarn and ways to combine unlike fibers. We will work with a variety of fleeces and fibers in various combinations to create your own repertoire of plain and fancy yarns.

## **DATE**

May 13th, 14th, 15th, 2022

## **TIME**

9:30 am - 4:00pm

## **LOCATION**

**Amy Brown's house**  
24403 Falcon Lane  
Caldwell, ID

**Cell: 208-863-6332**

## **COST**

**\$135**

**Send check to Mary Berent**

## Meeting Minutes for March 5, 2022

The **Board Meeting** was called to order by President Rebecca Winter. Other members present were vice president Mary Berent, treasurer Mitzi Meyers, secretary Sally Johnston and past president Doug Ranck.

Budget: Rebecca and Mitzi presented our income and expenses for last year, as well as a budget for this coming year. A motion was made to approve the budget, it was seconded and passed the vote.

The slate of officers for the coming year were presented by the nominating committee. The nominees are as follows:

President- Rebecca Winter

Vice-presidents- Barbara Redmond and Christine Brady

Treasurer- Mitzi Meyers

Secretary- Sally Johnston

Membership Officer- Connie Griffin

These nominees will be presented at the guild meeting today and will be voted on at our April meeting using paper ballots. Mary Berent volunteered to prepare the ballots.

Recently our meetings have begun at 11:30. We decided to return our meetings to begin at 11:00 in an effort to maximize our time together. This will take place in August.

As the guild secretary I have received notice that our annual report to the Idaho Secretary of State is due. As a non-profit business I will file the appropriate report.

Many of the guild study groups are on hiatus or meeting as planned. The Beginning Weaver's study group has not yet started. Rebecca said she would start up the group as their mentor. They plan to meet on the second of Thursday of each month. The board meeting was adjourned.

The **Regular Guild Meeting** was called to order by our president Rebecca Winter. Additional members attending include Vila Cox, Julie Gerrard, Anne Oglevie, Joan Sheehan, Cindy Schafer, Marlene Bean, Dyan Lay and Janet Stanger. I apologize to those who I missed. I know that I missed some late arrivals and attendants via Zoom.

Show and Tell: I am always inspired by the fiber artists and their works. Rebecca shared her most recent paper weaving project and Mary Berent shared her first tapestry and beautiful banners. We have so much talent in our guild.

Introductions were made along with answers to the question "What will be the next class (attending/presenting) you take? The responses were as varied as our members. Many said they would be attending Cynthia Newman's workshop. Other classes ranged from physical therapy to dog training.

Business: The slate of officers was presented by the nominating committee.

Rebecca provided directory updates.

Reports:

Vice-president Mary Berent reported on two upcoming workshops and our next program. The first workshop will be given by Cynthia Newman titled "Color in Composition". It will take place April 22<sup>nd</sup> through the 24<sup>th</sup> in Bowmont. The cost is \$125.00 which includes some of the materials. Then in May from the 13<sup>th</sup> through the 15<sup>th</sup> Lynn Ruggles will teach "Understanding Twist". The cost of this workshop is \$135.00 which includes materials. The program for our guild meeting in April will be "Asian Textiles and Ikat Design" presented by Fran Yuschak.

Our treasurer Mitzi Meyers reported that we are in good standing regarding our finances. For more information read Rebecca's report elsewhere in this newsletter.

As secretary for the guild, I want to thank everyone for printing their names on the attendance sheet. It makes my work much easier.

As I don my librarian hat for the guild, I reminded members that we are always getting new literature and samples for the library. There is now a need to update the inventory and shelve new items. Rebecca Winter and Brenda Hatch have volunteered to help.

Julie Gerrard is always on top of things for the monthly sample exchange. She reported that members who live outside the Boise area can obtain the samples by sending her a self-addressed stamped envelope and she will mail it to you.

Doug Ranck reported that the upcoming Tapestry Study group will meet on Thursday the 17<sup>th</sup> of this month at the Basque Center and museum. It will also be available via zoom.

Vila has purchased some zippered bags to contain the extra pieces of equipment, such as shuttles and hooks. When looms are rented this extra equipment consists of what is needed to warp the loom. Hopefully this will help in keeping track of the little pieces.

Vice-president Mary Berent introduced the program for this month provided by Linda Morton-Keithly "Handwoven Saddle Blankets." It was amazing to learn how much variation there is involved depending on the blanket 's use, etc., and similarity of fibers used. Linda is a font of knowledge on this subject.

◆ Respectfully submitted, Sally Johnston, Secretary

### Officers and Chairs

- President - Rebecca Winter
- Vice President - Mary Berent
- Vice President - Connie Griffin
- Secretary - Sally Johnston
- Treasurer - Mitzi Meyers
- Membership Officer - Dagmar Rapp
- Librarian - Sally Johnston
- Web Master - Vila Cox
- Newsletter Editor - Rebecca Winter
- Sample Exchange - Julie Gerrard
- Outreach Committee - Janet Stanger
- Social Media - Dyan Lay
- ANWG Representative - Connie Griffin
- Spinning Study Group - Dagmar Rapp
- Weaving Intensive Study Group - Connie Griffin & Rebecca Winter
- Day Weaving Study Group - Jenni Jimmerson
- Garment Study Group - Greta Ankeny
- COE Study Group - Mary Berent
- Bobbin Lace Study Group - Vila Cox
- Thursday Fiber Friends Zoom - Jinks Hunter
- Tapestry Study Group - Cindy Schafer

### Website

<http://www.handweavers-guild-boise.org>

### Mailing Address

PO Box 6258, Boise, ID 83707

