



Connecting Threads

Handweavers Guild of Boise Valley
December - 2014

December Program:

FIBER ARTS MIXED MEDIA EXCHANGE
and HOLIDAY POT LUCK

The Holiday Season is upon us already!!

◆ Pat Ann, Vice President

Calendar of Events

- December 6, 2014 - COE Study Group
10:00 to 11:00 am
Prior to the December Luncheon
Penny's Home
- December 6, 2014 - Guild Meeting
11:30 am - Business Meeting
12:30 am - Program - **Holiday Potluck Luncheon**
Penny Schraufnagel's Home
- December 9, 2014 - Bobbin Lace Study Group
6:30 pm - 8:30 pm
Rebecca's Studio House
- December 11, 2014 - Spinning Study Group
6:30 pm - 8:30 pm
Maralyn Larson's Clubhouse
- December 16, 2014 - Day Weaving Study Group
1:30 pm
Lynn Ruggles' Home
- January 17, 18, & 19, 2015 - Weaving Intensive
Twill and Twill Derivatives
- March 28-30, 2014 - Designing Full Circle
A Weaving Workshop by Mary Berent

Directions to Penny's house:

From either Boise or points west on Highway 84, take the Eagle Road exit from the freeway. Turn south on Eagle, go past Overland about 2/3 of a mile up a slight rise. A fire station will be on your right and the turn left on Easy Jet will be coming up. Turn left and follow Easy Jet to the end where it turns left on Tristram. Four houses later turn right on Hollandale. Proceed to the stop sign on Goshen. We are across the street, slightly to the right at 2688.

If coming from Boise on Overland, turn left on Cloverdale; go about 1/2 mile and turn right on Muir Ridge; continuing until it turns left and becomes Goshen Way. Call Penny at 208-342-1288.

DETAILS FOR THE

FIBER ARTS MIXED MEDIA EXCHANGE

- ★ All Media
- ★ Works of art created in any material using any fiber technique
- ★ Your special gift will be created by you from your choice of material
- ★ A short list that can be expanded to reflect your talents could include: weaving, spinning, felting, bobbin lace, beading, knitting, crochet, quilting, paper making, tapestry.

Be creative

*Your special gift will brighten
another's holiday!*

- * Wrap your gift, and put it in a brown paper bag.
- * All bags will be collected at the door.
- * Then only the wrapped gifts will be displayed for the exchange.
- * Numbers will be drawn to correspond with the numbers on the gifts



Membership

What a treat for new members and old alike, to see the fantastic weaving by COE recipients at our last meeting! Then our program on Twills, by Mary Berent, inspired us to get ready for our January Intensive.

Speaking of the Intensive, this is an excellent way for new weavers to gain experience and knowledge in a helpful and non-threatening atmosphere. I recommend it!

◆ Irene, Membership Officer

From Your President: Woven Together

The Holidays are upon us and we have snow! It is nice to be retired and enjoying choices of weaving or reading on these cold snowy days. With our guild holiday party coming up I am busy warping with my still new to me AVL loom.

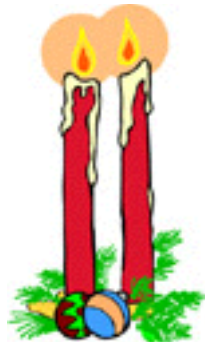
I have to congratulate Cynthia Newman again for passing her Certificate of Excellence. It is such a great achievement and we are all very proud of her. We will be having a celebration for her, but there has not been a date set yet.

Happy Holidays to all of you and yours.

◆ Your President, Anne Oglevie

UFO Program (Un-Finished Object)

- ~ Dig out those un-finished projects that are taking up needed space.
- ~ Same Rules
 - ◆ Bring the unfinished object to a regular meeting and give a short explanation.
 - ◆ Fill out a short form registering your intensions.
 - ◆ Then bring the finished thing-of-beauty to a regular meeting.
 - ◆ And collect your rewards.
- ◆ Kathy Shiflet, Vice President



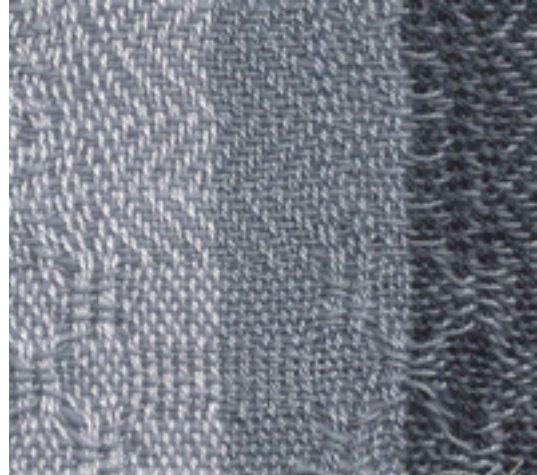
Spinning Study Group Christmas Party and Fiber Exchange

See Information Under Study Groups

November Sample

The sample this month is a 10/2 cotton, woven in a loose weave, good for scarves. It has areas of M&O's combined with twill areas, which adds interest to this 4 harness fabric. Katsy Luhning has provided the sample this month.

◆ Greta Ankeny, Sample Exchange Chair



Note: This is a Color Photo.

Sample Exchange Box

Members may pull samples from the Sample Exchange Box at each regular guild meeting. And remember to check your name off the list in each file folder. If you would like to participate or have questions, contact the Sample Chairperson.

Also, remember, there are samples from last year that are available to anyone toward the back of the box.

Study Group News

♥ Certificate of Excellence (COE) Study Group

COE Study Group will meet before the December Luncheon, 10:00 am, **December 6th**. All are welcome; for more information call Mary, 939-8906.

♥ Bobbin Lace Study Group

The Lace Study group will meet **December 9th**, 6:30pm at the Studio House. If you have questions or need something from Vila, please be sure to let her know ahead of time so she is prepared. Please RSVP, and if there is not enough interest we will plan for the next month.

♥ Spinning Study Group

It's our Annual Potluck and Fiber Exchange Christmas Party. We will be meeting on **Dec. 11** from 6:30 to 8:30 at

Maralyn's club house. Please bring your wheel or spindle, a potluck item to share (usually a goodie), a wrapped fiber item with a value of \$15 -20 dollars, if you would like to participate in the exchange. (This is not a white elephant exchange so please bring something you would also like to receive.) Plan on a fun evening of food, fun and fiber. All are welcome. If you have any questions or need directions please either give me a call or email me. Melanie yarnsthreads@aol.com or 608-0101

♥ Day Weaving Study Group

The next meeting is Tuesday **December 16th** at the home of Lynn Ruggles at 1.30pm. We will start discussing the book *Network Drafting*, by Alice Schlein. If you do not have a copy and would like part of the discussion please contact Anne Oglevie.



Officers and Chairs

President: Anne Oglevie 208-994-2725
Vice-presidents: Pat Ann 208-337-2126
Kathy Shiflet 208 830-9698
Secretary: Janet Stanger 377-0746
Treasurer: Melanie Smith 385-0085 or cell 608-0101
Membership Officer: Irene Chandler 318-8182
Librarian: Judy Tallent 208-615-1857
Web Master: Vila Cox 323-7736
Newsletter Editor: Rebecca Winter 859-2822
Sample Exchange: Greta Ankeny 318-6028
Spinning Study Group: Melanie Smith 385-0085
Weaving Intensive Study Group: Mary Berent 939-8906
COE Study Group: Mary Berent 939-8906
Day Weaving Study Group: Anne Oglevie 208-994-2725
Bobbin Lace Study Group: Vila Cox 323-7736

Website

<http://www.handweavers-guild-boise.org>

*We are pleased to present our own Mary Berent, Master Weaver
For the Spring, 2015 Workshop — A three day event, March 27 - 29*

DESIGNING FULL CIRCLE

This workshop will concentrate on design as an entire process; each segment of the circle contributes to a well-designed item. We will start the design process from many points in the process, but always come full circle to complete the design. The workshop will cover proportion of patterns and fibers, color theory and how working with yarn is different from mixing paint colors, how value and optical illusions can work for you, and how to effectively use interesting fabric structures. This will be a lively workshop with lots of variety and options.



Participants will bring a loom pre-warped to specific instructions. Each loom will be a different color and there will be a variety of structures to provide an opportunity for “round robin” samples experimenting with various colors, values and textures on the looms. Weave structures will also be covered

and if computers can be available for those interested in learning more about computer drafting and the possibilities that opens.

This workshop is intended to be fun as well as informative! We will have three VERY full days of learning and designing, so come with all your questions and problems and we'll have a three-day design adventure!

This workshop is intended for beginning to intermediate weavers (those who can warp the loom from written instructions and who understand basic drafting). Participants will come with looms pre-warped.

Bring: Pre-warped loom, scissors, other small loom stuff, pencil, paper, shuttles for your loom that will stay with your loom, all sorts of weft yarn for experimenting on your loom and other looms, a mug (not paper), and a cone or skein of yarn you would like to use in a design project. You may wish to bring a chair or stool for more comfortable weaving at table looms.

Optional: Bring a sewing pattern or large picture of something you would like to design fabric for or other design challenges.

Mary will provide the drafts by mail ahead for threading the looms, a notebook with about 36 pages of handouts, and a willingness to teach.

<http://www.mary-berent.com/designing-full-circle-workshop.htm>

DESIGNING FULL CIRCLE

A Workshop by Mary Berent

March 27-29, 2015

- ❖ Members may reserve their place in this workshop by paying the fee of \$120.00.
- ❖ This includes a \$ 20.00 fee for binder and handouts.
- ❖ Non-members must add \$25.00 membership fee, and you will also be a member for the year & have member rates for additional events.
- ❖ Class size will be held to 20 persons.
- ❖ You may fill out the form below and give your payment to:
 - * Pat Ann or Kathy Shiflet
 - * Contact information is in the directory.
 - * Or call 208-337-2126 for more information.



Name: _____

Address: _____

Phone & email: _____

Type of loom you will use: _____

TWILL and TWILL DERIVATIVES

**HANDWEAVERS
GUILD OF BOISE
VALLEY**

**WEAVING
INTENSIVE**

**January 17, 18, & 19,
2015**

9:00 am to 4:00 pm

**Location to be
announced**

Fee: \$30.00

**Come join the fun and
leave with exciting new
ideas to spice up your
twill weaving!**

SOME NECESSARY "INTENSIVE" INFORMATION:

- ☐ For the Intensive, each participant will select a twill/twill derivative of their choice. Previous to the Intensive, you will warp your loom using the chosen draft and fiber appropriate to the weave structure. Please weave the first sample for the Guild Notebook before coming to the Intensive..
 - ☐ This will be a round robin format in which each person may move from loom to loom weaving samples as they wish, offering the opportunity to weave some of those twill drafts you have been wanting and wishing to try. Fun fiber combinations of color and texture will be provided for all to weave their samples.
 - ☐ A finished sample size of 6-8" square is recommended.
 - ☐ All participants will meet as a group at the beginning of the Intensive and have the opportunity to explain their project and provide information that may be helpful in understanding their loom and sample.
 - ☐ During the Intensive, there will be opportunities to discuss the topic and share information, special hints and helps, additional information about the weave structures chosen and other valuable insights as appropriate.
 - ☐ The Intensive is open to members of the guild. If a nonmember wishes to be included, we ask that they join the guild.
- BY DECEMBER 1, 2014**
- ☐ Provide a draft and other notes on your chosen sample to the Intensive coordinator (PDF or Word format preferred, paper copies accepted as well). A notebook containing all the drafts will be prepared for each person so that everyone has this available during the workshop.

LOCATION ANNOUNCED

Rebecca's Studio House, 1012 East Third Street, Meridian 83642



Reserve your place in the Intensive by making your payment by
November 15, 2014.

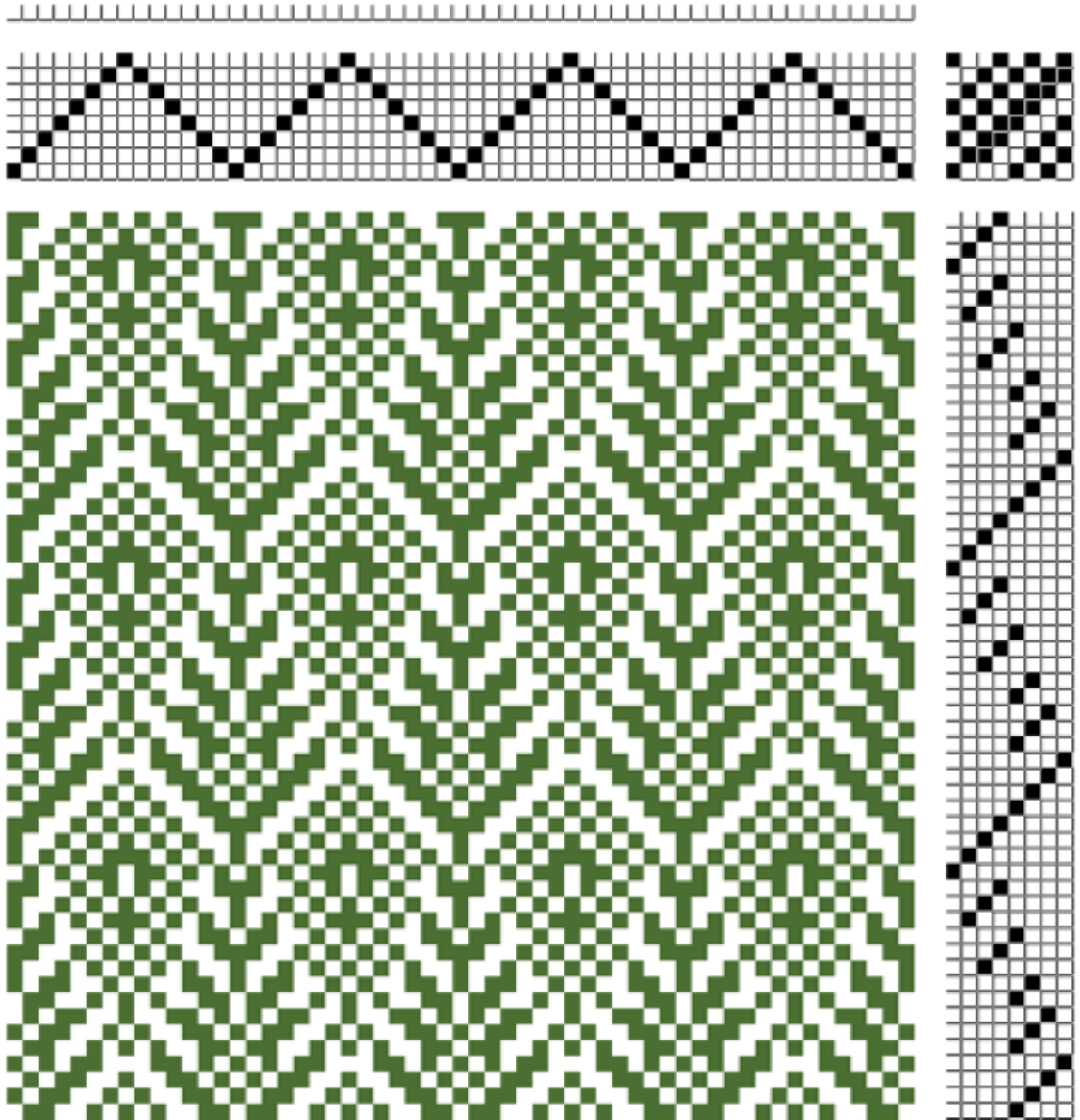
(We need to know how many to plan for, so early reservations are helpful.)
Cancellations made by January 1st will receive a full refund.

Return this form with your Intensive \$30.00 fee to:
Kathy Shiflet, Vice Pres., 2564 N. Waggle Place, Meridian, ID 83646
(Checks made out to HGBV)

Name _____
Address _____
Phone _____
E-mail _____

Loom to be used – Brand, Floor or Table Loom, Number of Harnesses, Weave
Structure you plan to use.

Here is a Little Winter Tree Draft for your Pleasure.
◆ Your Editor, Rebecca Winter
(Nope, it isn't a mistake in the tie-up - it puts the point on the tree.)



Connecting Threads
PO Box 6258
Boise ID 83707

The monthly newsletter from the



handweavers guild of boise valley, inc.

