

# Connecting Threads

handweavers guild of boise valley  
December, 2017

## December Program: Holiday Party and Mug Rug Exchange

It's December, so you know what that means. It's time for our Holiday Party. Once again we will be meeting at the home of Penny Schraufnagel. Her address is 2688 S. Goshen Way in Boise. The Party includes our annual potluck. So please plan to bring a dish to share. We will also have our Mug Rug Exchange for those who previously signed up. ♦ Melanie Smith, Vice-President



### Calendar of Events

December 2, 2017 - Regular Guild Meeting  
11:30 a.m. - Business Meeting  
12:30 p.m.-Program: **Holiday Party & Mug Rug Exchange**  
At the Home of Penny Schraufnagel

#### **Study Groups:**

November 30, 2017 - Rug Punch and Punch Needle Meeting  
1:00 p.m. - 4:00 p.m.  
Pat Day Hartwell's  
Meets on the 4th Thursday

December 2, 2017 - COE Study Group  
10:00 a.m. - Before the Regular Meeting,  
At the home of Penny Schraufnagel

December 6 & 20, 2017 - Knit and Crochet Group  
1:00 p.m. - 3:00 p.m.  
Aero Cafe

December 9, 2017 - Spinning Study Group  
10:00 a.m. - 12:00 noon  
Penny Schraufnagel's Home

December 12, 2017 - Bobbin Lace Group  
10:00 a.m. - 12:00 noon  
Vila Cox's Home

December 19, 2017 - Day Weaving Study Group  
12:30 p.m.  
Rebecca Winter's Home

January 13-15, 2018 - Weaving Intensive  
Topic: Circles  
At Stevens-Henager College, Nampa  
See the flier later in this Newsletter



### Mug Rug Exchange

Sign-ups have been fantastic! We have 15. If you have signed up, but for some reason don't think you can make the guild meeting, please email Melanie. We will work out the details of getting your coasters to the meeting and your set to you. If you have questions about whether you are on the list or not, just email Melanie.

Coasters should have no dimension less than 3.5 inches using the technique of your choice. You can weave, felt, knit, rug punch, or any other fiber art you can think of.

♦ Melanie Smith, Vice-President

### 2018 Weaving Intensive

Sign up Now  
The Topic is "Circles"  
See the Flier on Page 6



### From Your President

For most people when they think of November they think of Thanksgiving. We are encouraged to think of all of the things we have to be thankful for: family, food, shelter, clothing and fiber arts. So sticking with the Thanksgiving theme I want us to take a different path and ask us to share information we may not know about each other.

Let's get acquainted with each other in the area of cooking. That is a big part of Thanksgiving.

So, I have two questions. Do you use the turkey giblets (neck, heart, gizzard and liver)? There is a pretty standard Thanksgiving meal made up of turkey, stuffing, potatoes, green bean

casserole, cranberry and pumpkin pie, maybe some other salad and vegetables. Do your family or folks you gather with have non-traditional dishes that they include in the meal?

If you have a recipe you think others may like, put it on your phone so you can send it to someone or bring 3-4 copies of a recipe.

I hope your fiber arts projects have been going well and if you are working on gifts for Christmas they are coming along as you have planned.

I look forward to seeing each of you at Penny's home for our December meeting and luncheon.

◆ Greta Ankeny, President



## November Program

I would like to thank Jinks for sharing with us her love of rug punch, at our November guild meeting. I will confess I already knew how to do this technique, so for me it was fun to spend some time once again with the great craft. Jinks did such a great job making up the kits and showing all of us how to punch a great little coaster. Please plan to bring your finished one for all to see.

◆ Melanie Smith, Vice-President

## Membership News: December Mystery Member

Who Is This Mystery Member?

This month's clues are:

1. Trained to play the bag pipes as a child.
2. Earned an MFA at Southern Illinois.
3. When not playing with fiber, loves to rock climb and mountain bike.

The first person to notify the newsletter editor correctly will have bragging rights for the December Mystery Member, whose identity will be published in the next Newsletter.

Last month's Mystery Member was Mary Berent. Here are the clues which were given:

1. Learned to weave in Tennessee.
2. First loom was an Inkle Loom, which she still owns.
3. Nickname as a child - Penny.

Mitzi Meyer guessed Mary correctly during the meeting. She gets the prize.

◆ Rebecca Winter, Newsletter Editor

## Directions to Penny's house:

From either Boise or points west on Highway 84, take the Eagle Road exit from the freeway. Turn south on Eagle, go past Overland about 2/3 of a mile up a slight rise. A fire station will be on your right and the turn left on Easy Jet will be coming up. Turn left and follow Easy Jet to the end where it turns left on Tristram. Four houses later turn right on Hollandale. Proceed to the stop sign on Goshen. We are across the street, slightly to the right at 2688.

If coming from Boise on Overland, turn left on Cloverdale; go about 1/2 mile and turn right on Muir Ridge; continuing until it turns left and becomes Goshen Way. Call Penny at 208-921-8948.

## Study Group News

### Day Weaving Study Group

The day weaving study group will be meeting on Tuesday December 19th at the home of Rebecca Winter at 12:30 pm. All are welcome.

◆ Anne Oglevie, Study Group Chair

### Spinning Study Group

December for most of us means the hustle and bustle that come with shopping, family events and parties, so finding time to just relax is a premium this time of year. So why not plan joining us on December 9th for spinning. This year we are once again going to do something a bit different. Instead of the usual chocolate potluck, let's do a bit of a cookies exchange. Bring a dozen of your favorite cookies to exchange. That way when you leave you will have a plate of a variety of cookies for the holiday season. The fun starts at 10 until 12-ish, at Penny's home.

We will also have a fiber exchange for those who would like to participate. So bring a wrapped fiber gift with the value of at least \$15 to exchange.

Please plan to bring your wheel or spindle or any project you would like to work on for a fun morning of making stuff. If you have any questions for need directions just let Melanie know. [yarnsntreads@aol.com](mailto:yarnsntreads@aol.com)

◆ Melanie Smith, Study Group Chair

### The Rug Punch - Punch Needle Group

The November Rug Punch-Punch Needle Meeting will be at Pat Day Hartwell's house at 6 S Middleton, Nampa. I will have my new shop open. The meeting will be November 30 from 1 to 4 p.m. If you need directions, please feel free to call me at 208-466-1240.

◆ Pat Day Hartwell, Study Group Chair

### Certificate of Excellence Study Group

Certificate of Excellence (COE) Study Group. COE study group will meet **December 2**, before the Christmas Pot Luck at Penny's house. If you have ever thought of earning your Certificate of Excellence this group can offer support and encouragement. All are welcome; for more information call Mary, 939-8906.

◆ Mary Berent, Study Group Chair

## December Sample Exchange News

Cynthia Newman's sample is a plain weave of mixed hand dyed cotton.



❖ Jinks Hunter, Sample Chair

### **Sample Exchange Box**

Members may pull samples from the Sample Exchange Box at each regular guild meeting. And remember to check your name off the list in each file folder. If you would like to participate or have questions, contact the Sample Chairperson. Also, remember, there are samples from last year that are available to anyone toward the back of the box.

## November Board Meeting Minutes

### **President, Greta Ankeny**

Please support the President in keeping Show and Tell running in a timely manner. Please make sure to welcome guests and new members.

### **Hosting an ANWG Conference**

Although our guild is strong and active, Idaho does not have the capacity to host an ANWG Conference, because of the limited number of guild members statewide. Our guild currently has about 55 members. There is one other guild in the state, Moscow, which has about 10 members. This is far less total members than the over 300 in Montana. Therefore Montana is better equipped to host a future ANWG Conference.

### **Membership, Rebecca Winter**

Lily Lee will collate data from the Membership Forms to identify interest areas for future programs and any members interested in serving as officers. This information will be passed onto current and future Vice Presidents and the Nominations Committee to assist in their duties.

### **Policies**

Rebecca Winter is working on

updating guild job descriptions and other policies such as the free table. Unlike our By-laws, which are set in place as a result of being incorporated by the State of Idaho, these Policies are more internal "how to's" and common practices of our guild. She will be asking others to review the policies related to their role, and offer revisions.

### **Treasurer, Vila Cox**

Library Budget- The new shelves were included in the budget. A new cabinet has also been approved but not yet added to the budget, although we do have the funds to cover it. The equipment budget carries over year to year to save up for larger items although the book budget does not.

General Budget -Vila Cox will produce a list of expenditures for 2017 to share at the January general meeting.

### **Vice President, Melanie Smith**

The dyeing workshop for the year will be on Japanese stencil dyeing.

### **Webmaster, Vila Cox**

Board members need to take a more active approach to our social media presence. We need to post more often on the guild's Facebook Group page. Janet Stanger and Melanie Smith are the current administrators of it and approve posts and requests to join. While updating our guild policies we need to include policies for social media and create a new leadership position of Social Media Coordinator.

Also with the policy review we may update our Mission Statement and other information on our website. While our guild is focused on weaving and spinning, we may update the language to help newcomers understand that many other fiber arts are welcome and encouraged through Study Groups and other activities.

❖ Respectfully submitted, Lily Lee, Secretary

## November Meeting Minutes

Present: Lily Lee, Greta Ankeny, Jinks Hunter, Kathy Shiflet, Irene Chandler, Julie Gerrard, Jenni Jimmerson, Anne Oglevie, Barbara Redmond, Cindy Schafer, Richard Huddleston, Paula Huddleston, Pat Day Hartwell, Rebecca Winter, Marita Turner, Nancy Swenson, Vila Cox, Tracy Redhead, Penny Schraufnagel, Nancy Alzola, Mitzi Myers, Linda Neuville, Mary Berent, Melanie Smith, Lynn Ruggles, Esther Kleinkauf, Carol Freeman, Janet Stanger

### **Greta Ankeny, President**

Introductions -In 1-5 words please share where you have given or received the most help within the guild.

Free Table -There is a huge amount of 4-ply acrylic yarn that Anne Oglevie brought, and some old, but likely safe to use, coffee that was in the library.

### **Melanie Smith and Penny Schraufnagel, Vice Presidents**

Thank you to Mary Berent for a wonderful workshop on Computer Weaving last weekend and thank you



to Vila Cox to the excellent program on Finishing Techniques for weaving at our October meeting. The November program will be a Rug Punch Mug Rug Workshop led by Jinks Hunter. At our December meeting there will be a holiday Mug Rug Exchange.

### **Show and Tell**

9 members had shows and 4 had tells. Highlights: Carol Freeman modeled a nearly complete hand-dyed chenille crackle weave jacket, Irene Chandler made a quilt of old neckties and choir robes as well as another in-progress necktie quilt and a handwoven runner rug made with necktie weft, Jenni Jimmerson used yarn from Estonia and an old neighbor's llama wool to make a belt on an inkle loom which served as the inspiration to design the fabric to hand weave for a jacket, Barbara Redmond modeled a nuno felted reversible vest, Mitzi Myers completed a silk scarf in a free art class offered for cancer survivors and a hand-knitted sweater completed at the retreat in Donnelly, Lynn Ruggles shared some deflected double-weave pieces, and Esther Kleinkauf shared numerous rug punch projects in the spirit of the program.

### **Fiber Arts Trivia –Secretary, Lily Lee**

Another month of Fiber Arts Trivia questionnaires were distributed to members present for this cumulative competition.

### **ANWG**

No news.

### **Treasurer, Vila Cox**

We are on budget.

### **Librarian, Cindy Schafer**

Currently working on cataloguing new donations and acquisitions.

### **Membership Chair, Rebecca Winter**

#### *Mystery Member Clues:*

1. Learned to weave in Tennessee
2. First loom was an inkle loom this member still has today
3. Nickname was Penny

The Mystery Member is Mary Berent. Mitzi Myers guessed it correctly.

New Membership Directories are still available for members.

### **Equipment, Vila Cox**

The new shelving is up in the library. A new loom has been ordered but it will be about 6-8 months before it arrives. We are still looking to purchase a used 8-harness Macomber Baby Mac loom for members to check out.

### **Event Coordinator, Janet Stanger**

Instructors are needed for the Copper K Festival in Whitehall, MT. This festival focuses on Ranching Tradition Fibers.

### **Sample Box, Jinks Hunter**

Melanie Smith wove this month's Dimity weave sample.

### **Newsletter Editor, Rebecca Winter**

Send in information for the newsletter.

### **Webmaster, Vila Cox**

Email with any feedback or suggestions for the website.

### **Weaving Intensive, Melanie Smith**

The sign up sheet is available. This year's theme is circles. Drafts and paperwork are due at the January meeting. The cost to participate is \$25.00.

### **Study Groups**

- Day Weaving Study Group, Chair –Anne Oglevie – Currently studying a historical book
- COE Study Group, Chair –Mary Berent –Meets before the regular meeting every other month. The December meeting will be at Penny Schraufnagel's house at 10AM.
- Spinning Study Group, Chair –Melanie Smith –Meets at Penny Schraufnagel's house on the second Saturday of the month.
- Bobbin Lace Study Group, Chair –Vila Cox, Study Group Chair –Meets 2nd Tuesday each month 10am at Vila Cox's house.
- Rug Punch Study Group, Chair –Jinks Hunter –Meets the 4th Thursday of the month at Kathy Joe West's house.

❖ Respectfully submitted, Lily Lee, Secretary

### **Officers and Chairs**

- President: Greta Ankeny 208-318-6028
- Vice-presidents: Melanie Smith 208-385-0085 & Penny Schraufnagel 208-208-342-1288
- Secretary: Lily Martina Lee 208-922-8612
- Treasurer: Vila Cox 208-323-7736
- Membership Officer: Rebecca Winter 208-859-2822
- Librarians: Cindy Schafer 208-375-6736 & Joan Sheehan 208-794-6049
- Web Master: Vila Cox 208-323-7736
- Newsletter Editor: Rebecca Winter 208-859-2822
- Sample Exchange: Jinks Hunter 208-867-2953
- Equipment: Vila Cox 208-323-7736
- Events Coordinator: Janet Stanger 208-377-0746
- Spinning Study Group: Melanie Smith 208-385-0085
- Weaving Intensive: Melanie Smith 208-385-0085
- Day Weaving Study Group: Anne Oglevie 208-994-2725
- COE Study Group: Mary Berent 208-939-8906
- Bobbin Lace Study Group: Vila Cox 208-323-7736
- Rug & Needle Punch Meeting: Pat Day Hartwell 208-459-4324

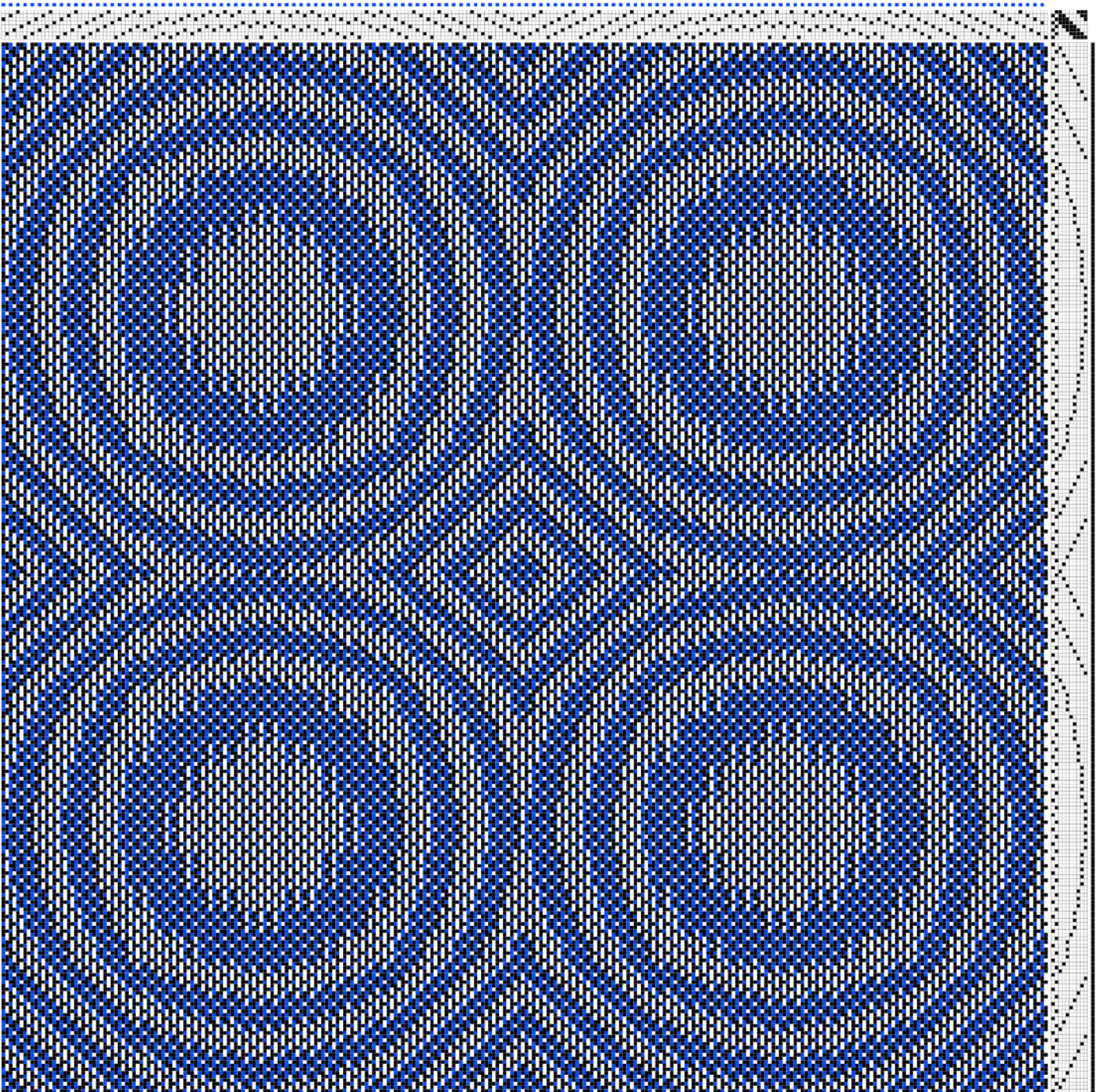
### **Website**

<http://www.handweavers-guild-boise.org>

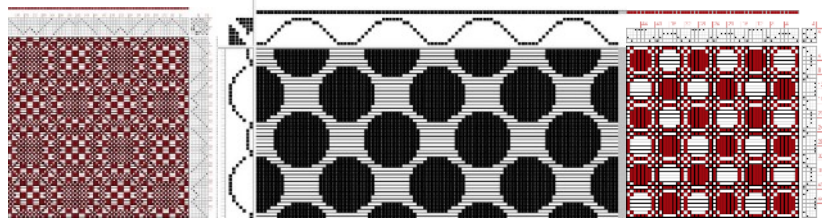


## Circle Drafts - Inspiration for the 2018 Weaving Intensive

Here is another draft provided by Mary Berent. How cool is this?  
If someone wanted a clearer draft of this, it would be available as a .wif.



# CIRCLES!



handweavers guild of boise valley

## 2018 Weaving Intensive

January 13-15 - 10 am to 4 pm - Cost a mere \$25.00

At Stevens-Henager College, 16819 N Marketplace Blvd, Nampa, ID 83687

Come and join the fun.

### *What is the Intensive Study Group?*

- The Intensive is a “teacher-less” workshop. We will each share in leading the group.
- At the beginning of the three-day session, each person will describe what they have put on their loom.
- Then everyone will have an opportunity to weave a sample from each loom, in a round robin format.
- Everyone is there to learn and help others by sharing what they have learned.

### *Before the Intensive --*

- Select a draft with some manner of circles in the design.
- Do some research on the topic you have chosen so you can explain the theory and the draft you have prepared, and be able to tell others what they need to know to weave their sample.
- Make notes of what you learned during your research.

### *What is needed --*

- A loom warped and ready to go. The weaver may choose any yarn that would be appropriate to the weave draft.
- Plan for a sample large enough to show the weave, at least 4 to 8 inches square.
- A warp length of 4 to 5 yards is suggested.
- A weaving draft and information about the Circle design selected.
- Shuttles and weft yarn to be left at the loom for others to use when weaving their samples.
- A short handout would be nice for everyone to include in their notebook.

### *Drafts are due ahead of time --*

- Printable draft sheets need to be turned in by January 6, 2017, so that copies can be made and notebooks prepared.
- Each participant will receive a notebook containing all the drafts, handouts, and sheet protectors to put their completed samples in.

### *You will also want to bring --*

- Your favorite way of identifying your samples, such as tags or masking tape.
- A thick waste yarn to weave in between samples to separate them. If you choose a distinctive yarn, then it will be easier to distinguish who the sample belongs to at the end.
- Scissors, notepaper, pen, needles, weights, post-it notes, or other items in your weaving toolkit.
- Feel free to bring extra yarn for weft if you would like to experiment with something different as you weave some samples.

### *Other details --*

- The Intensive is open to Guild members. If a non-member wishes to attend, we invite them to join the Guild.
- Email or give your drafts, notes, or handouts to Melanie Smith by January 6, so that she will have time to get the notebooks assembled. If emailing, send a .pdf or Word .doc.
- Mentors are available, if you need assistance. Please ask.
- Please fill out the form below, and turn in your fee to hold your place in the Intensive.

---

Name \_\_\_\_\_ Email \_\_\_\_\_

Type of loom \_\_\_\_\_ Number of Harnesses \_\_\_\_\_

\*If you would like to attend the intensive, but don't have a loom there are looms in the guild that can be borrowed, just let Melanie know. [yarnsthreads@aol.com](mailto:yarnsthreads@aol.com) or 208-608-0101