

Connecting Threads

**Handweavers Guild of Boise Valley
December, 2021**

🌿 🌿 Come in Person to the Meeting 🌿 🌿

December 4, 2021

The meeting will be held at the
First Congregational Church of Christ,
2201 Woodlawn, Boise, in the Banquet Room.

Regular Meeting at 11:00 a.m.

Or Join the Meeting via Zoom at this link:

[https://us02web.zoom.us/j/82825022922?
pwd=bVpsV2tjcZhqU2loajlrRmR2YWtodz09](https://us02web.zoom.us/j/82825022922?pwd=bVpsV2tjcZhqU2loajlrRmR2YWtodz09)

Meeting ID: 828 2502 2922

Passcode: Dec2021



The December meeting will be held at the Church, our usual meeting place, and will not be a pot luck, due to the virus. Bring your own lunch and we will have some visiting time, show and tell, and a brief program. Please feel free to bring a spinning wheel or knitting, etc.

December Program: 2020 Design Challenge Grand Finale

The 2020 Weaving Draft Design Challenge, proposed by Vila Cox, will wrap up at the December meeting. Everyone who submitted drafts will receive a booklet of challenge drafts and one raffle ticket for the each of the first five drafts submitted. The winner of the raffle will win a hand towel woven from the original 40 shaft pattern that started the challenge in the first place, woven by Vila. In addition to the booklets, the drafts will be available in digital form for all guild members. A booklet will also be added to the Guild library.

❖ Mary Berent, Vice President



Calendar of Events

December 4, 2021~

11:00 a.m. - **A Gathering & the 2020 Weaving
Design Challenge Grand Finale**

At the First Congregational Church of Christ,
2201 Woodlawn, Boise, in the Banquet Room

January 8, 2022 ~ **Please Note this Date for the Next
Regular Meeting**, due to the first Saturday falling
on January 1.

~~~~~  
January 15, 16, & 17, 2022 ~ Weaving Intensive Study  
Group ~ Twill

April 8, 9 & 10, 2022 ~ Color Compositions  
Workshop, by Cynthia Newman

May, 2022 ~ Understanding Twist Workshop, by  
Lynn Ruggles

Find further information about these 3 events later in  
this Newsletter.

~~~~~  
December 14, 2021 ~ Bobbin Lace

10:00 a.m. ~ At Vila Cox's home

December 21, 2021 Day Weaving Study Group

10:30 a.m. ~ At Vila Cox's home

Thursday Fiber Friends Zoom

Every Thursday ~ 2:00 p.m.

Spinning Study Group ~ See the fun plans later in
this Newsletter.



Sky Scarf Challenge

I am proposing a year-long challenge. The time commitment won't be a lot – just a little bit every day. This idea is taken from a book titled *Knit the Sky*, by Lea Redmond. There's lots of great ideas in this book. I think this one will be a fun challenge.

The basic plan is this - you start with size 3 needles and fine yarn in shades of blue, gray and white. You look at the sky every day, and knit a row that reflects the colors you see in the sky. Or for weavers you start with a loom dedicated to the scarf for a year. Spinners could start with appropriately colored roving and spin their own yarn. Blending fiber for appropriate colors to spin is another option. Perhaps even a blending get-together?

Start time can be January or maybe February to allow for prep time. It will be interesting to see how different the scarves turn out. Time of day and travel will add color variations. And branching out from the garter stitch will add distinctive elements if desired. Weavers could do something appropriately weaverly for variation, if wanted.

If this sounds like fun – just send me an email Jhunter101@gmail.com and I'll send all the details.

◆ Jinks Hunter, Study Group Chair

Say hello to our new members!

12 new fiber artists have joined the Guild this year. Please join me in welcoming:

Irma Atkinson
Deborah Bailey
Michele Belson
Amy Brown

Cindy Griewe
Katie Janiak
Kari Lawton
Carolyn Parkinson

Gail Perry
Jeannie Phillips
Elizabeth Richardson
Dolores Sanders

We look forward to seeing you at the monthly meetings and other Guild events.

◆ Dagmar Rapp, Membership Officer

2022 Weaving Intensive ~ Sign up at the December Meeting

The topic of the Intensive this year is "Twill." This is something one could study for the rest of one's weaving life and still have things to learn. Remember this is a study group, and studying is the main purpose. So hit the books now to find that one twill you would like to know more about. Find the flier with the details later in this Newsletter.

◆ Rebecca Winter, Intensive Study Group Co-Chair

From Your President

Look forward to some show & tell of our Double Rainbow Workshop results from members who participated. There will be some eye-popping colors.

During the workshop Jennifer Moore, our excellent teacher, mentioned a weave called Overshot Patterned Doubleweave. Hopefully some of our members will add this to their weaving to-do list. For me, it brings up one of my favorite topics - how do we name things in the fiber arts? Jennifer mentioned this was the agreed upon best name for this specific weave, because it was descriptive. Giving descriptive names has been the trend since Madelyn van der Hoogt created writings about weaves. She considered using descriptive names the best practice in order to be as specific and clear as possible, and to make it easier to discuss weaving with one another.

I have to say I tend toward the other side of this naming trend. I came across a good name for this "other side" recently - **poetic naming**. What would weaving be without Whig Rose, Houndstooth, or Lee's Surrender? These offer a glimpse into the richness of our weaving history. They also inject a richness into the language of weaving. May we always love and keep our poets.

This is one of those continuing controversies we will always live with in the world of weaving, I believe. The compromise is the allowing of both.

◆ Rebecca Winter, President



Sample Exchange

The sample for December is woven by Jean Zaske. It is a Finish Twill woven with 8/2 cotton in the warp and the weft. It is woven on 4 shafts and sett at 22 ends per inch in a 12 dent reed. The end product was kitchen towels.

◆ Julie Gerrard, Sample Chair

The Pat Ann Education Fund

Good day fellow guild members and fibre enthusiasts. If you have been keeping up with the news about the Pat Ann fiber, we are close to having all of it re-homed. Thank you to those who have participated; the Pat Ann Education Fund is well funded. The intended purpose of the fund is to help offset the cost of workshops, whether they be spinning, dyeing, felting or weaving, as long as they are Guild sponsored.

The Fund committee also chose a person to be the Administrator in perpetuity, to work with the Board and the Vice Presidents, who are in charge of planning workshops. I was volunteered/selected, and I accepted to take on that responsibility. With sponsoring workshops, the intent is to make them financially available to more members so we can have larger fiber parties, AKA workshops.

This is a little bit of information for now, there will be more later. Of course, there will be further information in this newsletter at a later date.

And a big thank you to the following people who assisted in the sales of the Pat Ann materials: Mary Berent, Anne Oglevie, Joan Ranck, Jeannie Phillips, Mitzi Meyers, Sally Johnston, Barbara Redmond, Jinks Hunter, Dagmar Rapp, Julie Gerrard, Linda Morton-Keithly, Cindy Griewe, Janet Stanger, Rebecca Winter, all the staff at The Twisted Ewe, and myself.

◆ Doug Ranck, the new Pat Ann Education Fund Administrator

November Program ~ Thank You

A really BIG thank you to Cynthia Newman for a fantastic November program on color and a good insight into how she thinks about the workings (and partying) of color in weaving. While we can never know everything about color, it sure helps to see how an expert does her planning and color drafting. Thanks!

◆ Mary Berent, Vice President



Spinning Study and Social Spinning Meetings Update

We are working up to holding in-person spinning activities. We have lots of ideas for study and sharing of knowledge and would like to hear about your ideas, and also wish to include some just social spinning. I have not proposed anything yet this year due mainly to family medical issues and personal concern about covid numbers. Thinking of possibly Jan or Feb for getting started with meetings. We would like to hear from those itching to get back to some spinning activities! Please contact me at jehunter101@gmail.com to let me know where your interests for spinning are. I will be sending out another questionnaire soon to gather some details. (Multiple choice is easy, right?)

◆ Jinks Hunter, Study Group Chair

Day Weaving Study Group

Day Weaving will be meeting at Vila Cox's home in December. The date is Tuesday, December 21, 10:30 am. Vila's address can be found in the Guild directory. All Guild members are welcome. Bring your projects and questions.

◆ Greta Ankeny, Study Group Chair



Garment Study Group

Garment Study group will be meeting November 30, 10:30 at Jenni Jimmerson's home. If you have created a garment or want help planning a garment from your handwoven fabric this is the group for you! This group will provide support and encouragement to help you along your way.

- ◆ Greta Ankeny, Study Group Chair

Thursday Fiber Friends Zoom

We would like to extend an invite for you to zoom-in and join us. We started meeting weekly via zoom when we were all mostly staying home during the worst of covid prior to vaccines. It is a great way to just hang out at home, show each other what we are working on, ask about project issues, inspire, encourage, and laugh. Hope you'll join every Thursday at 2:00 pm. Find us on zoom at:

<https://us02web.zoom.us/j/84563744178?pwd=WVl4WWNGRmJmd3A1KzIzaUtEaUtITZz09>

- ◆ Jinks Hunter, Study Group Chair

Bobbin Lace Study Group

The Bobbin Lace group meets the second Tuesday of each month. Next meeting is December 14th, 10am, at Vila's

- ◆ Vila Cox, Study Group Chair



FOR SALE

Cranbrook Countermarch Loom ~ \$3500.00

Are you interested in weaving blankets or room size rugs? I have the perfect loom for you. It's a Cranbrook Countermarch Loom, 96" wide, 8 harness, double back beam. It includes lease sticks, warp separator sticks, heddles, and 3 reeds. If you could buy this loom new today, it would be over \$20,000.

If you're interested or want more information, contact Peggy Jones at weaver16@hotmail.com

Louet s10 Spinning Wheel ~ \$425.00

Six wheels are too many for me! Selling my used Louet, which includes these items. (Current prices for new items shown in parentheses.) Single treadle wheel w/3 bobbins, scotch tension, & attached lazy kate (\$738); 2 extra bobbins (\$72); detachable skein winder (\$218); Schacht (?) tensioned lazy kate (\$69); extra scotch tension lazy kate (\$26); plus 2 free mystery parts. (Total for new: \$1,123)

Contact Chris Brady, cbrady@fiberpipe.net, 208-343-2416 (land line) or 208-447-8197 (text)



2022 Weaving Intensive Study Group

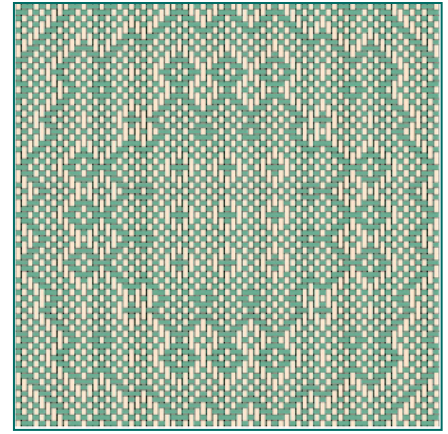
Handweavers Guild of Boise Valley

Twill

A Weaving Retreat, with Weaving Presented by Each Participant
Saturday, Sunday, and Monday ~ January 15, 16 & 17, 2022
9 AM to 5 PM ~ Location ~ the Bowmont Community Center
Fee - \$20.00

With support from the Pat Ann Education Fund in the form of used Binders and Page Protectors.

- It's time to start thinking about the Weaving Intensive! Choose a favorite Twill Weave - one you have been wanting to study, and come share it with the group. Join us for learning and fun!
- This will be our usual "teacherless" workshop. We each have the opportunity to be the expert in our chosen area of study. There are mentors available if you need some help or direction. Please ask.
- For this workshop each participant will warp their loom using their chosen twill draft. This will then be a round robin type of workshop, in which each person moves from loom to loom weaving samples as they wish.
- The weaver may also choose any yarn that would be appropriate for the draft. The weaver will also provide all the materials needed to weave samples on their loom. Calculate your warp length by the number of possible samples needed. Generally, if you are planning 4 to 6-inch samples, 4 to 5 yards would suffice. Warp width would also be best at about 6 inches, or a width needed to show your design.
- At the beginning of the workshop, the weaver will present their Twill to the group, and give instructions for weaving. Plan for the presentations to be approximately 8 to 10 minutes. Include an explanation of the weave structure, the reason for your choice of yarn, tips and techniques, why you chose this particular draft, and any quirks or preferences for your loom.
- Also, you may wish to plan to weave your own sample ahead of time so you can teach us from experience how this sample works. Another possibility would be to cut your sample from the loom and retie. This would give the opportunity to show finishing methods applicable to the sample.
- We recognize, and also value, the camaraderie and social aspect of the Intensive. We envision this opportunity to have great potential for experimentation and learning. Just think of the benefit of three days of discussion and exploration with others of like mind.
- Printable project plans and draft sheets (electronic or hard copy) will be submitted no later than January 4, 2022. Each participant will receive a binder containing all of the plan sheets and drafts. **Please include all information required for reproducing this cloth.** This includes 5 things - threading, tie-up, treadling, yarn and sett. We need more than just a .wif file. Additional notes about what you learned are also wonderful to have. There are Weaving Record Sheets available in the Library and on the Guild website [HERE](#).



Some necessary workshop information:

- ★ Each participant will bring a previously warped loom to the workshop.
- ★ Each loom will be warped using a twill draft of the weaver's choice.
- ★ Participants will provide their own warp and weft materials to be used on their loom.
- ★ Mentors are available. Please ask, if you would like to discuss your ideas.
- ★ Send your Instructions and draft in printable form to Rebecca by January 4, 2022. This is a final deadline.
- ★ The workshop is open to members of the guild. If a non-member wishes to attend the Intensive, we invite them to first join the guild.
- ★ There are a couple of Guild looms available, if you need one. We do not charge rent if you are using these for Guild sponsored Workshops or Intensives.
- ★ Keep this information available, as it is the only pre-workshop information you will receive.
- ★ Your payment of the fee is your confirmation for participation in this event.
- ★ The Guild will accept cancellations with a refund through January 4, 2021. After that date cancellations will be considered on an individual basis.

Return the following with your fee to Connie Griffin or Rebecca Winter.

Name _____ Address _____

Phone _____ email _____

Fee amount included \$ _____



Color in Composition - Weaving Workshop with Cynthia Newman

Color in Composition is a 3-day round-robin style workshop focusing on thinking creatively about our use of color. Using block designs, we will explore how block size and proportion along with color selection work together to create the mood of the cloth from energizing to calm. We will discuss thinking intuitively about color using all of our senses and understanding color theory as a reference tool. While maintaining our personal preferences for color, we will learn how to create depth and balance in our handwoven cloth.

4 and 8 shaft designs will be provided which address design considerations, including proportion, symmetry and asymmetry. Beginning with warp stripes in different color combinations and stripe proportions, students will apply weft color and treadling variations to the blocks and observe the interaction.

This workshop is designed for beginning and intermediate weavers. Turned twill blocks (8-shaft) and summer & winter blocks (4-shaft to 8-shaft) will be used. Students will warp their loom with 10/2, 8/2 cotton, or 8/2 Tencel. A large selection of colors wound on bobbins will be available for the students to use and explore. The Instruction will include PowerPoint illustrations along with fabric samples which will be outlined in the workshop notebook.

The workshop will be held Friday April 8, Saturday April 9 and Sunday April 10, 2022. Workshop costs and location have not yet been determined.



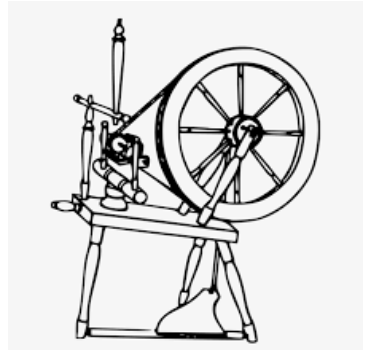
May, 2022 ~ 3 Day Spinning Workshop ~ Understanding Twist

Instructor: Lynn Ruggles

Dates and Location TBD

Ignoring color changes, the name of the sheep who grew the fleece, or whether it is natural color or dyed, do you always spin the same yarn? Do you adjust your spinning to get the yarn you really want, whether thicker, thinner, smoother, lumpier; or have you decided to stick with your tried and true old faithful yarn default? You can spin other yarns, and this class will show you how to adjust your spinning to match what you want.

As spinners, we all know that twist holds fibers together to create yarn. But, how much twist do you need? There are many different fibers from all the various breeds of animals, such as sheep, goats, camels, and alpacas, as well as insects, and natural and manufactured fibers from plants. In this class, we will play with fibers as we talk about twist. You will learn how to set up your wheel for the yarn you'd like rather than the yarn you always spin, how to calculate spinning ratios, how to spin a consistent yarn, and ways to combine unlike fibers. We will work with a variety of fleeces and fibers in various combinations to create our own repertoire of plain and fancy yarns.



Meeting Minutes for November 6, 2021

The board meeting was called to order by president Rebecca Winter.

Officers and members present: president Rebecca Winter, past president Doug Ranck, vice-presidents Mary Berent and Connie Griffin, secretary Sally Johnston, Anne Oglevie, Vila Cox.

The first topic for discussion was deletion of old photos on our groups.io website. There are quite a few photos that are outdated. Rebecca and others will look through them. The board agreed entire posts may be deleted, which will include photos.

Rebecca suggested inviting Dyan Lay to help with the Facebook, as she is our Social Media chair. She would be added as an administrator. The question will include Janet Stanger as she is our Community Outreach chair. (President's Note: there is a meeting planned with Dyan and Janet to coordinate this effort).

ANWG payment: We pay \$1.00 yearly for each member in our guild at the end of spring. Last year our numbers were down due to Covid-19. We only had 30 members then. This year our guild is growing and thus far we have 62 members. Mary Berent made a motion we send ANWG \$62.00, which is our current membership number. It was seconded, and all agreed. Connie made out a form and gave it to Mitzi to be mailed along with a check.

Vice-presidents' report: Mary announced that the program in May will be on twist in spinning by Lynn Ruggles. There will also be a spinning workshop by Lynn. There will be a workshop from April 8-10 by Cynthia Newman on color. A discussion regarding locations for future workshops ensued. First of all, any communication with this church on Woodlawn must go through Vila, as liaison there. We have had workshops at Bowmont which Rebecca will look into, as she is the liaison with the Bowmont location. Mary Berent suggested St. Lukes as it is closer and there is no charge. Connie asked for more suggestions for future workshops.

Dagmar will be asked to distribute directories to paid members of the guild.

Pat Anne Education Fund: There is approximately \$6,600.00 available at this time. We discussed as to how much money will go toward workshops. No definitive answer was reached as it must go before all guild members. The proposal from the committee includes a discount to members of 25% of the total workshop expenses or \$700.00, whichever is appropriate to the nature of the costs. It was decided we need a fund administrator and Doug Ranck is willing to fill this position until the fund's end. Rebecca officially appointed him during the meeting. The committee will also write a job description for this new position and policies for the fund. Mitzi made a motion to accept the suggestions of October 28, 2021, from the committee, and to agree the committee will create policies and job descriptions appropriate for the fund. The motion was seconded by Mary Berent, and there was brief further discussion. The motion was approved unanimously by the board members. The board acknowledges the policies will be put before the membership once they are created, and the membership will be kept informed of actions related to the fund. Rebecca will consult the By-laws to be sure we are being compliant.

Board meeting adjourned.

Regular meeting called to order.

Members present: president Rebecca Winter, past president Doug Ranck, vice-presidents Mary Berent and Connie Griffin, secretary Sally Johnston, Julie Gerrard, Raelene Viste, Linda Morton-Keithley, Katzy Luhring, Anne Oglevie, Mich B?, Ester Kleinkauf, Jean Zaske, Tasha Denegal, Marita Turner, Zena Zaleski, Irene Chandler, Cheryl Wurtenberger, Kelly Sandusky, Barbara Redmond, Katie Janiale?, Vila Cox, Cynthia Newman, Jeannie Phillips, Gwendolyn Downs, Cheri Byrnes, Edna Melches? and Julie Butler. (Be sure to print clearly on the sign-in clipboard.)

Rebecca announced Doug is taking payments during the meeting for fiber, etc., for Pat Ann's donation.

Visitors and potential new members introduced themselves: Kelly, Katie, Tasha and Zeana.

The Pat Anne Education Fund was explained to all present by Rebecca and Mary. They made a proposal to the board for how the committee will work regarding policies. Doug volunteered to be the administer of the fund, as it will be separated from other guild monies. Mary also reported that we now have approximately \$6,600.00 including money from the Pop-up sale at the Twisted Ewe. Carolyn Parkinson, owner of the Twisted Ewe, decided to waive the 10% of sales. A thank you card for the Twisted Ewe was passed around for signatures.

Vice president report: two upcoming workshops. In April from the 8th to the 10th Cynthia Newman will hold a workshop on color, and in May Lynn Ruggles will provide a program and a workshop on spinning.

There will be a December meeting here at the church with a bring your-own-food-menu, and the program will be the results from Vila's 2020 Challenge.

Connie requested ideas for future workshops, and for the program on favorite books.

Treasurer's report: We have money and Mitzi will give the board members a written copy.

Julie Gerrard reported that the sample share is full for this year. She explained how the Sample Box works.

For equipment rentals contact Vila Cox. Looms used for workshops are free, otherwise the charge for one month will apply.

Connie stated there will be a guild Weaving Intensive study group on twill over Martin Luther King weekend. It will be held at Bowmont church. For additional information see instructions in the newsletter.

The Handweaver's Guild of America "goody bag" was awarded to Barbara Redmond, who passed it on to Rebecca Winter, who passed it on to Gwendolyn Downs.

The meeting was adjourned followed by a very rich Show and Tell and a fabulous program by Cynthia Newman.

{It is interesting to note - there were no Zoom meetings held this day, due to the fact there was no power at the church during the entire meeting. Idaho Power was digging trenches next to the church when we left for home.}

◆ Respectfully submitted, Sally Johnston, Secretary

Officers and Chairs

- President - Rebecca Winter
- Vice President - Mary Berent
- Vice President - Connie Griffin
- Secretary - Sally Johnston
- Treasurer - Mitzi Meyers
- Membership Officer - Dagmar Rapp
- Librarian - Sally Johnston
- Web Master - Vila Cox
- Newsletter Editor - Rebecca Winter
- Sample Exchange - Julie Gerrard
- Outreach Committee - Janet Stanger
- Social Media - Dyan Lay
- ANWG Representative - Connie Griffin
- Spinning Study Group - Jinks Hunter & Dagmar Rapp
- Weaving Intensive Study Group - Connie Griffin & Rebecca Winter
- Day Weaving Study Group - Greta Ankeny
- Garment Study Group - Greta Ankeny
- COE Study Group - Mary Berent
- Bobbin Lace Study Group - Vila Cox
- Thursday Fiber Friends Zoom - Jinks Hunter

Website

<http://www.handweavers-guild-boise.org>

Mailing Address

PO Box 6258, Boise, ID 83707

