

Connecting Threads

Handweavers Guild of Boise Valley
February, 2009

February Program -- Multicolored Layered Blends for Spinning

Guest artist! We welcome Pamela Beitia, from the Snake River Fiber Artists, as the featured instructor for the February program. Learn how to easily create multi-colored rovings!

You can just observe, or if you want to participate, bring anywhere from 3 to 20 small (1 ounce) batts of preferably equal staple-length fibers in colors of your choice. Bring your spinning wheel or drop spindle and prepare to be amazed!

Marlene Bean, Co-Vice President



Calendar of Events:

February 7, 2009 - COE Study Group
Moxie Java, 1122 S Vista, Boise
9:30 to 11:00 am

February 7, 2009 - Guild Meeting - Boise Historical
Museum - Prospector Room
11:30 am - Business Meeting
12 noon - Social time
1:00 p.m. Program - Multicolored Layered
Blends for Spinning

February 12, 2009 - Spinning Study Group
Maralyn's clubhouse in Meridian
6:30-8:30 p.m.

March 20, 21 & 22, 2009 - Weaving Workshop
Magic in the Water II, with Laura Fry

Linen Towel Exchange

The Handweaver's Guild of Boise will host a High Tea, Potluck and Linen Towel Exchange at the regularly scheduled meeting in June, 2009.

For your towel we ask that you use linen as a thread in either warp, weft or both. Suggested sizes are 17" by 30" for a linen tea towel or 16" by 32" for a hand towel. Please bring your towel gift-wrapped. The Vice Presidents have handouts of sample drafts and information about using linen in weaving. Ask them for your copy.



Teacher's Corner

It was suggested at the recent Intensive we discuss weaving terminology. I remember early in my weaving career realizing I must learn the language of weaving. And I love the varied historical names and all of their contradictions.

We decided to start somewhat at the beginning, if there is such a thing in weaving, with "**shaft**" and "**harness.**" What **is** the difference? In our day and usage of the terms, no difference really. A shaft or harness is the frame that goes up and down generally in the center of the loom and carries the warp threads, thus creating the shed where the shuttle goes. The mechanisms attached to the harness are the heddles, which have an eye in the center to hold each warp thread.

The moguls of weaving these days promote the use of the word shaft, as they say it more accurately describes the frame, and I concede that is true. Harness is an older term that historically applied to an entire system of mechanisms, more like the horse and buggy.

As I wrote in my Color-and-Weave study, I learned weaving in great part from a book I checked out from the public library called Four-Harness Weaving, by Bowen. During the study I researched all of the books in my own fairly extensive weaving library. The results were the two terms were used equally half and half in the books. And so, the term harness will always be the one that falls more easily from my lips.

Go weave! Enjoy! Rebecca Winter ♥♥♥♥♥



Guild Meeting Minutes

January 3, 2009

President Al Hayden called the meeting to order at the temporary meeting room in the Boise Museum. Members present included Jean Zaske, Irene Chandler, Marita Turner, Lynn Ruggles, Vila Cox, Mary Berent, Mitzi Meyer, Pat Ann, Julie Gerard, Penny Schraufnagel, Carolyn Dade, CeeCee Stricklin, Marlene Bean, Cindy Schafer, Rebecca Winter, Mary Ireland and Ivy DeHart.

Vice Presidents reports - The Laura Fry Workshop now has twelve people signed up, so at this time it should pay for itself. Al said that if there is a need for the Guild to supplement the workshop, that it would be ok. Pat Ann made the motion that the guild would help out if it was necessary. It was seconded and approved.

Cece also talked about the June Potluck meeting. She has planned a Potluck/High Tea with a Linen Towel Exchange. She also had prepared a handout for all who wanted to participate in the towel exchange. The handout was full of linen information as well as a number of drafts that might be used.

Treasurer's Report - Irene gave the treasurer's report, with \$3763.14 in the checking account and \$4506.76 in savings. There has been \$330.00 in checks turned in for the upcoming Overshot Intensive. She also noted that there are currently thirty six members.

Study Groups Reports -
Spin Study Group - meets at Maralyn Larsen's Club house the second Thursday of the month.
COE Study Group - meets every other month and everyone is welcome.

Al talked about the Overshot Intensive coming up in two weeks. There are thirteen people signed up. The group will meet at the Caldwell Public Library meeting room for the three day workshop. All drafts need to be sent to Vila as soon as possible. They can be mailed or e-mailed. On Saturday, the first day of the intensive there will be a brown bag lunch and at that time the participants will decide about the next two days. Al will check with

the library and make sure that there are tables available for the table looms.

Marlene announced that next month's program will be given by Pamela Beitia on blending wool bats on a drum carder. Everyone is encouraged to bring their spinning wheels and any wool they might want to play with. Check the next newsletter for particulars regarding the program.

Lynn announced that she will be giving a lesson on using a drop spindle at Fuzz. Check with Mary Humme at Fuzz for all the information.

Pat Ann asked for a list of any books that members would like to see added to the library. If anyone has seen a new book that would be a good addition, let her know.

Color Study - This month's color study was on Split Compliments. It was very interesting to see what colors that combined. Next month will be "Fiesta colors" - what each member would consider their "Fiesta colors".

Show and Tell - Jean showed a scarf that her mother had brought home from Peru. Penny showed her handspun done on January 1 at Mitzi's spin in. Mary also had handspun from that day.

The meeting was then adjourned and after a short break and visit to the library the members enjoyed a very informative program on Kumihimo given by Rebecca Winter with help from Cindy Schafer. She had wonderful samples, and great instruction for all who wanted to try.

◆ Respectfully Submitted, Mary Ireland





Ramblings from the President

Here it is February (almost), half-way through the guild year. We are already planning for the next year with the Nominating and Challenge committees in full swing.

I have found that it is true that the more you put into something, the more you get out of it. This is true of our guild also. If you are approached and asked to serve as an officer, don't immediately decline. Think about it and consider the opportunity to get more out of your guild. There is no office that is so overwhelming in responsibilities that preclude any one of us from serving. And all of the past officers would be more than willing to help you if asked.

The workshop season is upon us. The Intensive (January) and the Laura Fry - Magic in the Water (March). These are sponsored by your guild for advancing experiences in the arts of fiber. I hope that you can take advantage of all the workshops each year.

Other opportunities to learn more are the Night Study Group and New Weavers Study Group. These are currently just lurking around somewhere waiting for participants. All we need is a topic for the Night Study Group and a commitment to learn. If you would like to cover the basic of weaving, then all we need to do is set a time to restart the New Weavers Study Group. The teachers are here and waiting.

Intensive: You may or may not get this by the time of the Intensive: Treadling Variations in Over-shot, but we plan to have an intensive time being led by our three Master Weavers.

Full report will be coming next month.

If you want to stop by and see what we are doing, we will be at the Caldwell Public Library on Dearborn St. January 17, 18, and 19.

-- Al



GARDEN VALLEY FIBER FREAKS WINTER BLUES SPIN-IN

Sunday, February 15, 2009
Crouch Community Hall
10:00 am - 3:00 pm

Oil your wheel and get out your fiber! It's almost time to spin away the winter blues!

The annual Garden Valley Fiber Freaks Winter Blues Spin-in will be held Sunday, February 15, 2009 at the Crouch Community Hall, 10:00 am - 3:00 pm. All spinners and drop-ins are welcome. Please bring a sack lunch and finger food dish to share (no crockpots, no cooking allowed). For your convenience, soup, sandwiches and finger food items may be purchased across the street. Also bring a fiber related, wrapped white elephant gift. Bring your show and tell items. And bring news of other workshops, spin-ins and fiber conferences.

There is a \$5 donation for spinners, \$15 donation for vendors. Coffee, tea and hot chocolate will be provided.

Directions: From Boise take Hwy 55 north to Banks (19 miles north of Horseshoe Bend), turn right onto Hwy 17 towards Loman. Take a left turn (9 miles up river) into the town of Crouch. Bear right when you get to the center of town. The Community Hall is next to the Trading Post and across the street from the Merc. Come early and have breakfast at one of the local restaurants. Enjoy the snow and lovely ride up, but drive carefully. For further information call Jo 462-3797, Kathy 462-8092 or Margaret 462-8014.



*There is still room for more participants in the **Laura Fry Workshop**. Please call the Vice Presidents to hold your spot.*

See the flyer on the Website and in previous Newsletters.

Deciphering the Color Code



At the January meeting we looked at the triadic color chords created by an isosceles triangle on the color wheel.

Another name for this combination is split complement. For example, if red is the color you are starting with, red's complement is green. The colors on either side of green are blue green and yellow green (the split of colors on either side of the complementary color). So the triadic chord for red would be Red-Blue Green-Yellow Green. On the color wheel there are 12 combinations of split complements:

Yellow-Red violet-Blue violet
Yellow orange-Violet-Blue
Orange-Blue violet-Blue green
Red orange-Blue-Green
Red-Blue green-Yellow green
Red violet-Green-Yellow
Violet-Yellow green-Yellow orange
Blue violet-Yellow-Orange
Blue-Yellow orange-Red orange
Blue green-Orange-Red
Green-Red orange-Red violet
Yellow green-Red-Violet

These color combinations are very pleasing to the eye and are a great starting point for combining colors.

For February, think Fiesta! Bring in fibers with colors that say "Fiesta!" to you. Also, round up all of your woven, knitted, felted, stitched items that you think have a Fiesta color palette. We'll take a look at them and see if we can define what makes something shout "Fiesta"!

Study Group News

Spinning Study Group

Join the Spin R Us Group on February 12, at Marilyn's Clubhouse, 6:30-8:30. Anyone is welcome to join us, whether you spin or not!

Questions or need directions? Call Lynn Ruggles, 375-9172.

Certificate of Excellence (COE) Study Group

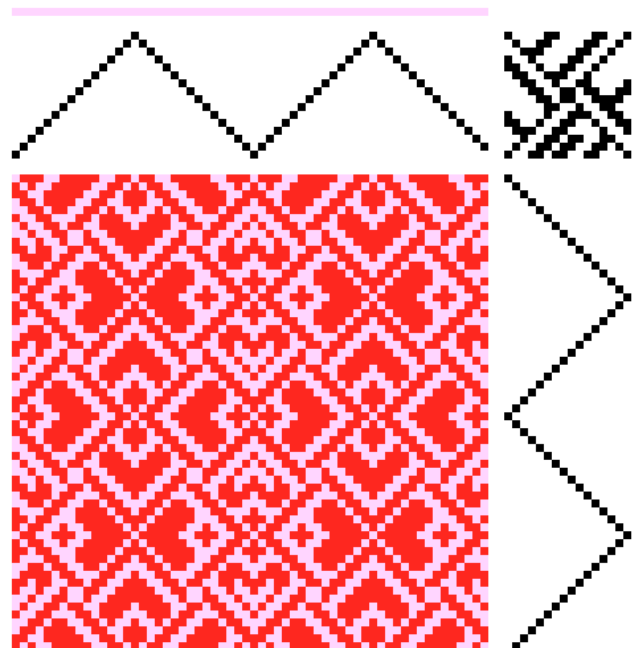
The COE study group will meet next on Saturday, February 7, at Moxie Java on Vista. All are welcome to participate. We will meet from 9:30 to 11:00 am.

Call Mary Berent for more info. at 939-8906.



Draft Inspiration

Here's a lovely little 16 harness heart twill for Valentine's Day.



Guild Officers and Chairs

President - Al Hayden - 343-7300

Vice-presidents - Cece Stricklin - 387-2641

Marlene Bean - 337-3631

Secretary: Mary Ireland - 896-4833

Treasurer - Irene Chandler - 467-4997

Membership Officer - Penny Schraufnagel - 342-1288

Librarian: Pat Ann - 452-3181

Newsletter Editor: Rebecca Winter 895-0975

Weaving Study Group: Julie Gerrard 342-8562

Weaving Intensive Study Group - Al Hayden

Spinning Study Group: Lynn Ruggles 375-9172

COE Study Group: Mary Berent 939-8906

Web Master: Vila Cox 323-7736

Websites

<http://www.handweavers-guild-boise.org>

<http://my.calendars.net/handweavers/>



Weaving Intensive 2009 - Treadling Variations in Overshot



Vila did a great job of leading the study.



Vila, Marlene and Pat are very focused.



Kathy and Irene contemplate the yarn.



Deep Thoughts by Cynthia.



Cece wonders whether the bobbin is half full or half empty.



Rebecca "happily" reties the treadles.

Connecting Threads
PO Box 6258
Boise ID 83707

The monthly newsletter from the



handweavers guild of boise valley, inc.



February Newsletter Highlights and Please Remembers:

Program: Multicolored Layered Blends for Spinning

Color Code: "Fiesta!"

Linen Towel Exchange, High Tea and Potluck: June, 2009

