

☞ Connecting Threads ☞

Handweavers Guild of Boise Valley

February, 2013



February Program: How to Clean and Feed your Spinning Wheel, by Melanie Smith

In this program we will be talking about the best ways to clean and maintain you spinning wheel so that is not only looks perfect but spins for years and years to come. A great deal of this information that will be given out will also work well for our looms too!

Calendar of Events

- February 2, 2013 - Guild Meeting
Boise Historical Museum at the Adelman House
11:30 am - Business Meeting
12:30 am - Social time
1:00 p.m. Program:
On Spinning, by Melanie Smith

- February 2, 2013 - COE Study Group
Moxie Java, 1122 S Vista, Boise
9:30 to 11:00 am
- February 2, 2013 - Beginning Weaving Study Group
Boise Historical Museum at the Adelman House
Immediately after the Regular Meeting
- February 12, 2013 - Bobbin Lace Study Group
6:30 pm - 8:30 pm
Rebecca's Studio House
- February 14, 2013 - Spinning Study Group
6:30 pm - 8:30 pm
Maralyn's Clubhouse
- January 31 & February 28 - Knitting Study Group
6:30 to 8:30 pm
Melanie Smith's Home
- February 19, 2013 - Day Weaving Study Group
1:30 to 3:30 pm
Vila Cox's Home
- March 23, 2013 - From Fleece to Garment Study Group
11:00 am
Melanie Smith's Home

Spinning Workshop - February 23, 24, & 25, 2013
Weaving Workshop - April 27, 28 & 29, 2013



Sign Up Now!! Two Workshops to Enjoy

Take advantage of the lower cost workshops this year. The two workshops are being given by Lynn Ruggles, Wheel of Color and Mary Berent, Supplementary Warp. See the workshop information sheets in this newsletter. Both of these teachers are recognized national teachers and both write for the magazines you all know and love--*Spin-Off* and *Handwoven!!* Because we are lucky enough to have these talented teachers in our own guild and don't have to pay transportation expenses for these workshops, the workshops are more economical than you will ever find them again.

Don't miss this opportunity.

Don't wait to register, as both workshops are filling fast!!



Tapestry Study Group Forming

There is some interest in forming a tapestry study group. Anyone who would like to participate contact Lynn Ruggles. She has the name of someone who may offer to lead the group.

Notes From Your President

Hello! Happy Winter! We don't usually have snow around on the ground near this long and especially affecting the roadways. It is beautiful, but because of the road conditions we have been at home for many more days on end than usual. That means I have been weaving, spinning, knitting, and working more with one of my favorite things - YARN. Hope you are staying warm and able to work on your craft of choice daily. It's amazing what can be accomplished in a few minutes at a time. "Keep chewing on those elephants." See you soon!

◆ Your President, Mitzi Meyers

February Sample

This month's sample is another in the series of dying various yarns to compare how they each take the dye. Linen is the fiber of the month, and was dyed with MX Fiber Reactive dyes. The base colors are slightly different from the previous samples but the proportions are the same. I have enjoyed seeing how the different fibers take the dye. With these samples you can have a set of color samples in one fiber and see approximately how it would look in other fibers. Inspiration for color and texture fabric??

◆ Al Hayden



Sample Exchange Box

Members may pull samples from the **Sample Exchange Box** at each regular guild meeting. And remember to check your name off the list in **each** file folder. If you would like to participate or have questions, contact the Sample Chairperson.

Also, remember, there are samples from last year that are available to anyone toward the back of the box.

Membership

Welcome to new members Kathy Shiflet and Amy Butler! You are just in time to join us for the our wonderful workshops. We look forward to seeing what kind of fiber arts you both enjoy.

We also welcome back Dee Verti, who has been an active member in the past.

Welcome, welcome to you all.



14th Annual

GARDEN VALLEY FIBER FREAKS WINTER BLUES SPIN-IN

Sunday, February 17, 2013

Crouch Community Hall

10:00 am - 3:00 pm

Oil your wheel and get out your fiber! It's almost time to spin away the winter blues!

The annual Garden Valley Fiber Freaks Winter Blues Spin-in will be held Sunday, February 12, 2012 at the Crouch Community Hall, 10:00 am - 3:00 pm. All spinners and drop-ins are welcome. Please bring a sack lunch and finger food dish to share (no crock-pots, no cooking allowed). For your convenience, soup, sandwiches and finger food items may be purchased at the nearby Garden Valley Market, Wild Bill's Coffee and Bistro, and/or the Longhorn Restaurant. Also bring a fiber related, wrapped gift. Bring your show and tell items. And bring news of other workshops, spin-ins and fiber conferences.

There is a \$5 donation for spinners, \$15 donation for vendors. Coffee, tea and hot chocolate will be provided.

Directions: From Boise take Hwy 55 north to Banks (19 miles north of Horseshoe Bend), turn right onto Hwy 17 (Banks-Lowman Road) towards Loman. Take a left turn (9 miles up river) into the town of Crouch. Bear right when you get to the center of town. The Community Hall is next to the Trading Post and across the street from the Old Crouch Mercantile Exchange (formerly the Merc). Come early and have breakfast at one of the local restaurants. Enjoy the snow (if there is any!) and the lovely ride up, but drive carefully. For further information call Jo 462-3797, Kathy 462-8092, Georgianna 462-3709 or Margaret 365-7650.



Study Group News

♥ Spinning Study Group

The Spinning Study Group will meet on **February 14** from 6:30-8:30pm at Maralyn's clubhouse in Meridian. Bring your spinning, your sock-knitting, your bobbin-lace or your wool for your fleece-to-garment - we are an all inclusive get-it-done group! Color this month is Ruby.



♥ Certificate of Excellence (COE) Study Group

The COE Study Group will be held on **February 2, 2013**, at 9:30 a.m. at the Moxie Java on Vista in Boise. As usual, everyone is invited. For information call Mary Berent, 939-8906.



♥ Day Weaving Study Group

The Day Weavers Study Group will meet on a new day Tuesday **February 19th** at 1:30pm at the home of Vila Cox. Please call Anne Oglevie for any additional information.



♥ Bobbin Lace Study Group

We meet on the second Tuesday of every month. The next meeting will be **February 12**, at Rebecca's Studio House at 6:30 pm. Call Vila for information, 323-7736



♥ Knitting Study Group

We will be meeting **January 31** and **February 28** at Melanie Smith's home from 6:30 to 8:30. We will be chatting about knitting a basic sweater. So if you have ever wanted to knit a sweater but were afraid to try come and find out more. the pattern we will be talking about can be from a beginner to an advanced knitter, it's up to you. If you have any questions please email Melanie at yarnsnthreads@aol.com



♥ The Beginning Weaving Study Group The Beginning Weavers Study Group will meet after the regular meeting and program on Saturday, **February 2nd**. The topic is Colour, and Carol Freeman will be leading the study group.

♥ Fleece to Garment Study Group

Because of winter weather and other things going on we have rescheduled the combing and carding meeting for **March 23rd** starting at 11 AM at Melanie Smith's home. We will be talking about how to use combs, a drum carder, hand cards, flickers and dog combs. If you would like to play around with some fleece that you have at home that is clean and ready to go please bring it. If you have any questions please email Melanie at yarnsnthreads@aol.com

Board Meeting Minutes

January 5, 2013 -- Moxie Java

Present: Mitzi Meyers, Melanie Smith, Al Hayden, Mary Berent, Janet Stanger, Irene Chandler, Rebecca Winter, Rena Lute.

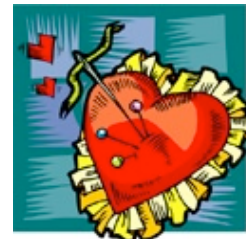
VP Mary Berent announced that the Caldwell Library was not available for Lynn Ruggles' work shop. It is now set up to be held in the Community room of the Credit Union.

She had to sign a contract for the event. There is no Rent or Deposit charge to us to use this room.

Melanie Smith Treasurer gives a report for January of \$4,713.15 in checking and due to a computer printer problem she also had the report of December 2012 for the amount of \$4,703.15 in checking.

Irene Chandler presented 3 membership checks to the treasurer, bringing our membership to 59 members. She also reports that Ava Lutteman now qualifies for Honorary Membership.

It is time to put together the nomination committee. Mitzi asked for volunteers to be on the committee. The Committee will exist of Al Hayden, Janet Stanger and Mitzi Meyers.



Rebecca Winter reports that the work and approval of the policies and procedures has been completed. She reports that the ANWG registration will open on January 8th, 2013.

Museum Liaison- Al Hayden reports that the head museum person wants to sit down with him and discuss our needs and the amount of our donation we give them for use of Adelman house.

Meeting adjourned to attend regular meeting.

♥ Respectfully Submitted, Janet Stanger, Secretary



Guild Meeting Minutes

January 5, 2013 -- Adelman House

Present: Janet Stanger, Penny Schraufnagel, Dee Verti, David and Amy Butler, Marita Turner, Mary Siedenstrang, Pat Ann, Julie Gerrard, Rebecca Winter, Carol Freeman, Anne Ogleve, Chris Farrin, Rena Lute, Joan Sheehan, Mary Berent, Al Hayden, Ivy DeHart, Mitzi Meyers, Irene Chandler, Melanie Smith, Lynn Ruggles, Judy Tallent, Nancy Swenson.

Mitzi Meyers called the meeting to order and introductions were made. New members Amy Butler and Dee Verdi were present.

VP Mary Berent reports that today's program will be Rebecca Winter on Summer and Winter. She reports that there are still spaces available for the spinning workshop and the weaving workshop also have a few spaces available. She announced that the spinning workshop that had previously been scheduled for the Caldwell Library will now be held in the Icon Credit Union Community Room, in Meridian.

Melanie Smith presented Treasurer's report. We have \$4,713.15 in checking, \$4,508.33 in savings and the CD has \$12,738.93.

Newsletter- Rebecca reminded everyone to watch for the yahoo group reminders to get the things to her for the newsletter. She is always looking for article for the news letter so if you have something please get it to her.

Al Hayden explained the sample exchange for the new members. No new samples available this month.

Rebecca Winter, our ANWG Rep., announced that registration for the conference opens January 8th 2013. She passed around a booklet of classes and instructors available at the conference. The conference is in June of 2013 in Bellingham, Washington.

Show and tell: Mary Berent shared a Jacket she had made from hand woven material. Anne Oglevie shared a knitted hat that she bought in Sweden. The hat features the Twine knitting. She also showed a wool and silk scarf she had woven. Carol Freeman showed a Jacket that she had made from hand woven material. Nancy Swenson shared a pair of knitted socks. Mary Siedenstrang shared a sample.

Amy Butler showed a silk scarf she had dyed, a Tam made from hand spun yarn and a skein of yarn she spun. David Butler shared a crocheted scarf that Amy had made for him for Christmas. Penny Schraufnagel a vest. Janet Stanger told she had got busy and made 10 hats and 10 scarves for her Grandchildren. She used a Nifty Knitter and somehow at the end she had 1 left over. Melanie Smith showed us hand towels that she had woven and given as Christmas presents. Irene Chandler shared that the Birds of Prey has a new Exhibit. A Sheik donated one of his Caravan Tents. They have it all set up with the

decorations and furnishings. In the display they have some wool weavings for decoration.

Mitzi Meyers showed the shiver not that she had made and a triangle shawl.

Lynn Ruggles shared Intensive information. The cost is \$30.00. She needs your draft for the notebook. The workshop is being held at Baseline on Emerald between 5 Mile and Maple Grove.

People are showing interest in a tapestry weaving group. Lynn Ruggles took names of interested people.

Mitzi announced the Nomination Committee- Mitzi Meyers, Al Hayden and Janet Stanger. Mitzi asked if anyone was interested in any of the positions to get a hold of the committee.

Study Groups: The next meeting for the COE Study Group will be in February at Moxie Java. Please refer to study group schedules listed on web site and newsletter calendar for times and places.

UFO's- Nancy Swenson finished her socks and has another pair of socks to finish. Anne Oglevie has a cardigan she started in the 90's, and Irene finished a picture quilt.

Gold Bag- Nancy Swenson won the Gold Bag which contained a nice lavender chenille yarn.

Meeting Adjourned for Summer & Winter Program.

• Respectfully Submitted, Janet Stanger, Secretary



Officers and Chairs

President: Mitzi Meyers 340-9775

Vice-presidents: Mary Berent 939-8906

Rena Lute 891-2111

Secretary: Janet Stanger 377-0746

Treasurer: Melanie Smith 385-0085 or cell 608-0101

Membership Officer: Irene Chandler 318-8182

Librarian: Judy Tallent 208-615-1857

Web Master: Vila Cox 323-7736

Newsletter Editor: Rebecca Winter 859-2822

Sample Exchange: Al Hayden 343-7300

Spinning Study Group: Lynn Ruggles 375-9172

Weaving Intensive Study Group: Lynn Ruggles 375-9172

COE Study Group: Mary Berent 939-8906

Day Weaving Study Group: Anne Oglevie 208-994-2725

Beginning Weaving Study Group: Anne Oglevie
208-994-2725

Bobbin Lace Study Group: Vila Cox 323-7736

From Sheep to Garment: Melanie Smith 385-0085 or
cell 608-0101

Knitting Study Group: Melanie Smith 385-0085 or
cell 608-0101

Website

<http://www.handweavers-guild-boise.org>

Note: This Newsletter is located online at this address.



Happy Holidays Challenge 2013

Held in conjunction with Museum Comes to Life
September 28, 2013

All entries must be entirely your own and created since September, 2012.
There is no limit to number of colors used. You will pick colors and design of
your project to best depict your Chosen Holiday.

Entry fee- \$5 first entry, \$2 for second, \$2 for third or more entries, for a
maximum of \$9.

Four Categories:

1. Flat Handwoven (yardage, hemmed or fringed items, such as scarves, dish towels, shawls)
2. Handspun Skeins (80% handspun; fibers must be identified)
3. Finished items from hand spun.
4. Fiber Arts (3 dimensional items, felted items, baskets, garments etc.)

A card will be attached to each entry after entries are submitted. Please
provide the following information with each entry:

1. Holiday Chosen
2. Weave structure for hand woven items
3. Fiber content and fiber samples for all entries.

Prizes for each category
\$50 First Place - \$35 Second Place - \$15 for Third Place

Registration is due by Saturday August 24 ----- Finished items are due by
September 21



Mary Berent Supplementary Warp Workshop

a Weaving workshop sponsored by the Handweavers Guild of Boise Valley
Saturday, April 27; Sunday, April 28; and Monday, April 29, 2013

Mark your calendars for three days of fast paced weaving, fun and learning! This workshop will get you thinking about what you can do with your loom in a whole new way.

Supplementary warp, or supplemental warp is a technique that opens a world of fabulous design possibilities. It allows the weaver to plan complex patterns that can be woven with 8 or fewer shafts and with only one shuttle. It allows for various tensions within the same warp, allowing some very interesting effects. Once weavers allow themselves to think differently about warp tension, the design possibilities are limitless. Many designs that LOOK complex are explained and turned weaves are explored. This is a round-robin workshop using 4 and 8 shaft looms.

The workshop will be held at the Caldwell Public Library Community Room. You will need to bring a loom warped according to instructions, weft yarn for that loom, shuttle(s) for that loom, basic weaving equipment (threading hook, scissors, tapestry needle, paper and pencil for note taking, masking tape, etc.) and your lunch each day. The cost of the workshop is \$95 for members of the Handweavers Guild of BoiseValley, with an additional materials fee of \$20 for a total of \$115 for the three day workshop. The total fee for non-Guild members is \$140 and includes membership in the Guild. This will be three fantastic days of weaving fun!

Name _____ email address _____

Phone _____ cell phone _____

To register send a check for the full amount to: Rena Lute, 2273 W Burns Street, Eagle, Idaho 83616, cell 891-2111.



Lynn Ruggles Wheel of Color

a Spinning workshop sponsored by the Handweavers Guild of Boise Valley
Saturday, February 23; Sunday, February 24; and Monday, February 25, 2013

This will be a wonderful workshop exploring spinning in color, from color theory to color reality!

Beginning with three colors of fiber, you will blend and spin colors to create your own fiber color wheel. Along the way, you will learn how to use a color wheel to choose colors and look at what happens when the “color wheel rules” are broken. You will learn how colors interact and how to combine them for the most subdued or eye-catching vibrant effects. You will learn different spinning techniques and different types of yarn which will enhance the colors in the fiber and look at various ways to ply depending on what color effect you wish to achieve. Multi-dyed rovings will also be examined for their characteristics. Are the colors sharp and well defined? Do the colors bleed into each other? You will learn how to make the most out of each different color-way and you will spin, blend and ply them using a variety of techniques that will enhance the color rather than dull it.

The workshop will be held at the Caldwell Public Library Community Room. You will need to bring a working spinning wheel with a medium size whorl, at least 2 extra bobbins, lazy kate, handcards (regular, not cotton), plus basic spinning supplies (small niddy-noddy, extra drive band, oil bottle, etc.) and your lunch each day. The cost of the workshop is \$95 for members of the Handweavers Guild of BoiseValley, with an additional materials fee of \$35 for a total of \$130 for the three day workshop. The total fee for non-Guild members is \$155 and includes membership in the Guild. This will be three fantastic days of fiber fun!

Name _____ email address _____

Phone _____ cell phone _____

To register send a check for the full amount to: Mary Berent, 769 N Grey Pebble Way, Eagle, Idaho 83616.
Phone 939-8906.



Connecting Threads
PO Box 6258
Boise ID 83707

The monthly newsletter from the



handweavers guild of boise valley, inc.

Newsletter Highlights and Please Remembers:

February Program: Spinning

Sign up for the Wonderful Workshops

