



Connecting Threads

Handweavers Guild of Boise Valley
February, 2014

February Program:

Free Style Jackets: Sewing with Handwoven Fabric, by Carol Freeman

We have all been awed by Carol's wonderful hand woven jackets and vests at guild meetings during show and tell. Would you like to see how she does it? Come to the February Meeting and learn about making Carol **Freeman Style** garments. Carol will share sewing techniques, fabric tips, and her design process. That isn't all; she can help us conquer our fear of cutting hand woven fabric.

What better way to kick off those winter blues than getting some Free Style creation happening in your weaving studio. See you February 1st at the Guild Meeting.

Calendar of Events

February 1, 2014 - COE Study Group

10:00 to 11:00 am

Bingham Room at the Boise Public Library

February 1, 2014 - Guild Meeting

Bingham Room (3rd floor) at the Boise Public Library
on Capitol Boulevard across the street from
the Idaho Historical Museum.

11:30 am - Business Meeting

12:30 am - Social time

1:00 p.m. Program: **Free Style Jackets,**
by Carol Freeman

February 1, 2014 Tapestry Study Group

Right after the meeting of the Guild
Bingham Room at the Boise Public Library

February 11 2014 - Bobbin Lace Study Group

6:30 pm - 8:30 pm

Rebecca's Studio House

February 13, 2014 - Spinning Study Group

6:30 pm - 8:30 pm

Maralyn's Clubhouse

February 18, 2014 - Day Weaving Study Group

1:30 p.m.

Home of Mary Berent

March 15, 16, & 17 2014 - Weaving Workshop

The Interlacement Motif in Weaving, by Susan Wilson

Interlacement Motif Workshop with Susan Wilson

If you are still debating on whether to sign up or not for this 3-day workshop March 15, 16 and 17th don't wait too long. There are still a few openings. Please pay by the February meeting.

This workshop will cover Interlacement as the design motif itself and cover a variety of weave structures. It will be held at Baseline in the large conference room at Scott DeHart's business, 10259 W. Emerald St. Boise. Directions: East of Five mile on the South side of Emerald. The cost is \$125.00, with a \$3.00 materials fee to the instructor at the workshop. Contact Ivy DeHart directly by phone or e-mail to register.

The Instructor, Susan Wilson, would like each participant to give the following information. If you have not sent this information to Ivy, do so immediately:

- ◆ Name
- ◆ Email (or post) address
- ◆ Level of weaving experience
- ◆ Type of loom (floor, table, direct tie-up floor)
- ◆ Number of shafts
- ◆ Brand of loom
- ◆ Ivy DeHart & Pat Ann



Notes From Your President

Yesterday, while walking with a friend, she asked how long I had been a member of the guild. After that discussion, I realized just how much influence the guild has had on my weaving and spinning experiences. I began weaving in 2000 and spinning a few years ago. At almost every monthly meeting there is a program by guild members with topics that range from warping a loom, to weaving and spinning techniques, to cleaning a sewing machine or spinning wheel, to finishing techniques. These programs are a wonderful way for guild members to research a specific topic and share what they learn with members. Also, every year the guild offers a workshop (sometimes two) where we bring a well-known instructor to Boise (sometimes the instructor lives here) for a three day workshop. Over the years we have had the opportunity to learn about dyeing yarn, designing fabric for a garment and sewing the garment, spinning a variety of fibers, supplementary warp, versatility with treadling variations, weaving with color and structure, weaving with silk, wet finishing handwoven items, and more.

About ten years ago, the guild starting doing a weaving intensive, a three day workshop that is self-taught. A topic is selected and everyone who attends is responsible for researching the topic, warping their loom appropriately for the topic and sharing what they learn about the topic with the group. Over the years, the topics have ranged from weave structures: twill, overshot, double weave, summer and winter, to block substitutions, to color and weave, to rug weaving, to baste fibers. This workshop is a great way for members to learn and share and to get to know one another in a comfortable, less intimidating setting.

I think the guild has done a good job with their mission to further the craft of weaving and spinning. I know that I have learned a great deal by being a member of the Handweavers Guild of Boise Valley. Thanks to everyone for being so willing to learn and to share what you learn.

◆ Your President, Julie Gerrard



February Sample

This month's sample is from the Intensive on Bast fibers (Editor's Note: and woven by Al, himself). The yarn is 2-ply hemp from Lunatic Fringe and the draft is from *Handwoven*, Jan/Feb 2000. It is a re-creation of an ancient South American fabric. Doramay Keasbey translated the fabric from pickup weaving to loom controlled weaving. It takes a multi-harness loom, either a table loom or a compu-dobby loom. Not enough treadles on a floor loom. The fabric would make a striking table runner.

◆ Al Hayden



Sample Exchange Box

Members may pull samples from the **Sample Exchange Box** at each regular guild meeting. And remember to check your name off the list in **each** file folder. If you would like to participate or have questions, contact the Sample Chairperson.

Also, remember, there are samples from last year that are available to anyone toward the back of the box.



Detail of this Month's Sample, by Al Hayden

Membership

We welcome two new members to our Guild:

- Carolyn Camp
- Ella Maia

Study Group News

♥ Spinning Study Group

The Spinning study group will be celebrating Valentines day on **February 13th** from 6:30 to 8:30 at Marylyn's club house. This month's theme is love, so bring your favorite fiber you love to spin. There also might be some Chocolate to get you ready for Valentines day! If you have any questions please email Melanie Smith at yarnsntreads@aol.com or give her a call. 608-0101



♥ Certificate of Excellence (COE) Study Group

We will meet on Saturday, **February 1** before the regular Guild meeting at the Marion Bingham Room in the Boise Public Library. The library opens at 10, so that is when the meeting will start! All are welcome to join in. For information call Mary Berent, 939-8906.



♥ Day Weaving Study Group

The Day Weavers study group will meet on Tuesday **February 18th** at 1.30pm in the home of Mary Berent. Everyone welcome. Please call Anne Oglevie if you need directions 994 2725.

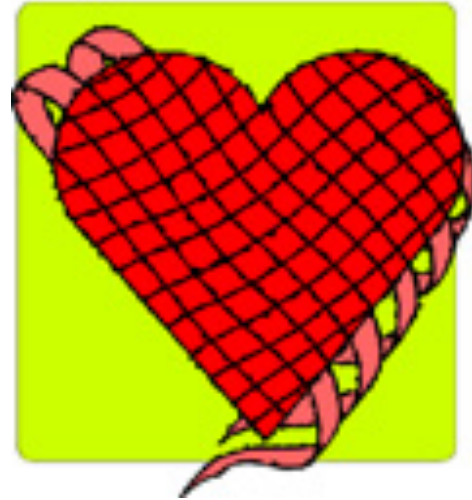
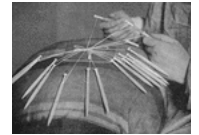


♥ Tapestry Study Group

The Tapestry Study group will meet after the regularly scheduled guild meeting on **February 1**. Bring your tapestry loom and some weft yarn to weave. We challenged everyone to set up the loom with 2 inches for a small sampler and then pick out a design for the other portion of your loom. Stained glass patterns make really nice tapestry designs. Pick one that isn't too fussy.

♥ Bobbin Lace Study Group

We meet on the second Tuesday of every month. The next meeting will be **February 11**, at Rebecca's Studio House at 6:30 pm. Call Vila for information, 323-7736



UFO Program

The UFO (Un-Finished Object) program is in full force again this year!! Same "rules" as last year. Bring the unfinished object to a regular meeting and give a short explanation. Then fill out a short form registering your intentions. Then bring the finished thing-of-beauty to a regular meeting and collect your prize for finishing it. (Chocolate always Available.) An easy and fun way to clean out those old projects.

♥ Ivy DeHart & Pat Ann

Goopy Pecan Pie Bars From Al Hayden

Al shared this recipe at the December meeting. Delicious!

Crust:

2 cups flour

1/2 cup sugar

3/4 cup butter

1/8 teaspoonful salt

Cut in butter. Line a 9 by 13 inch pan with foil. Spray the foil with Pam. Lightly pat the mixture into the foil-lining. This makes it very easy to lift the bars from the pan. Bake at 350 degrees for 18 minutes.

Filling:

1 cup brown sugar

1 up light Karo syrup

1/2 cup butter

4 eggs, lightly beaten

2 1/2 cups chopped pecan pieces

1 teaspoonful vanilla

Mix the sugar, syrup and butter in a sauce pan and bring to a boil. Remove from heat. Add 1/2 cup syrup to the beaten eggs to temper. Add the egg mixture to the remaining syrup. Add pecans and vanilla. Pour into the crust. Bake at 350 degrees for 30-32 minutes or until set.

Other Events of Interest

15th Annual Winter Blues Spin-In

It's again time for the Winter blues Spin in. We will be setting up a carpool list at the next Guild meeting. If you can't make the meeting please email Melanie yarnsntthreads@aol.com and we will get you on the list and figure out who is driving and who need a ride. The information for the Spin in is on Feb 16th 2014 - Sunday Crouch/Garden Valley Community Hall. General Public \$5. Door donation 10AM - 3PM and Vendors \$15 - 9:30AM set-up break down after 3PM. Please bring a snack to share and a fiber gift to exchange, and any finished items you might want to show off.

Fiber Train Fiber Fair

This year in Nampa May 25-26 will host the 3 annual Fiber Train Fiber arts festival. The fair has multiple vendors classes and all thing fiber related. The guild has the opportunity to host an information and demonstration table at the fair. Our purpose would be to inform the public of what our guild is and does. We can also demonstrate spinning, weaving and any other fiber arts we would like to highlight. There will be no cost to the guild to host this table. If you are interested in helping in any way please email Melanie at yarnsntthreads@aol.com

Board Meeting Minutes

A board meeting was held January 5, 2014 at the Bingham Room in the Boise Public Library, prior to the regular meeting. Those who attended were Julie Gerrard, Melanie Smith, Emma Smith, Al Hayden, Anne Oglevie, Irene Chandler, Pat Anne, Rebecca Winter, and Janet Stanger.

Julie reported that the Guild's library has been moved to Rebecca Winter's Studio House, and the books need to be moved from boxes back to the cabinet shelves. Several members volunteered to meet Julie and assist with unpacking the books. Cost to move the library from Boise to Meridian was \$140 and it took the moving company 1 1/2 hours.

Rebecca handed out several copies of Farmer's Insurance Co.'s proposal through Fred Kessler as agent, to insure Rebecca's Studio House with Rebecca as the homeowner, and to insure the Guild's Library, and to provide liability insurance for both entities. Winterbourne Studios (Rebecca's business) will rent the space to The Handweaver's Guild of Boise Valley. Rebecca will be the contact person for the policy. It is common for insurers to cover several renters in one location as



businesses. The policy is \$782 per year, including homeowner's coverage. Pat suggested the owner/Rebecca should set the price for the Guild meeting use and for storage and protection for the library. Melanie suggested the Guild pay half. Al said this would actually work out to be less than we have been spending for use of the Adelmann House. Some other locations charge much more. It was decided the Guild would pay \$391, half the policy amount. The board should review yearly, and Rebecca should speak up if not happy. Anne mentioned that the Library should always have coverage as it has some valuable items, and that liability for injuries, etc, is also important. There was discussion whether the Guild should also pay rent per day at a set amount. At the Adelmann House the figure is currently \$35 per day. This may depend on how usage occurs. Melanie made a motion to pay \$391, seconded by Anne. Motion carried. Rebecca will prepare an official rental agreement for the Guild president to sign.

Julie said Judith McKenzie has been contacted regarding a weaving workshop to be held in March of 2015. A spinning workshop is in the works, too.

Julie said Lynn's COE Celebration will probably be in February at Julie's home. Rena is the chairman.

A consideration of travel funds for the ANWG representative (currently Rebecca) to attend the annual meeting was suggested. Anne says many guilds do pay for this. Rebecca is to think about it and to approach the board if it's desired. The ANWG Meeting is in June.

Officers Reports:
Pat Anne/Vice Pres. - UFO Prizes will be at meeting today. Members can pay her for the Susan Wilson Workshop. The Treasurer can pre-pay for Susan's plane ticket now, as Ivy is out of town due to her husband's illness. Workshop signups and fee of \$125.00 are due at meeting today. Janet Stanger/Secretary - Apology for not getting the previous meetings minutes completed due to family emergency out of town. Will have both sets of minutes in the newsletter due in January. Janet will also be contacting people regarding upcoming elections, as Chair of the N o m i n a t i o n s Committee. Melanie Smith/Treasurer - Balance of \$4289.30 in regular account. Ready to subscribe to Swedish magazine "Vav". Pat moves and Janet seconds, and vote is affirmative for the two years subscription at \$112.00. Melanie also announced that "Fiber Train Festival" sponsored by Puffy Mondae's will take place May 25 & 26. A booth for the Handweaver's Guild is available for free if we wish. Members will be able to demonstrate weaving and spinning, etc., and increase interest in the Guild, but cannot sell items. It's held at the Farmer's Market area at the old Lloyd Lumber building in Nampa. Last year's festival was quite busy. Al said it would be a good

outreach for Canyon County. Irene Chandler/Membership - Currently we have 48 members. Not all come to meetings, but like to stay informed. A few have not paid dues for the year. Judy Tallent/Library was not here. Rebecca Winter/ no report. Study groups / no report.

Julie adjourned the meeting.

◆ Irene Chandler, filing in as Secretary



Officers and Chairs

President: Julie Gerrard
342-8562
Vice-presidents: Ivy DeHart
939-2335
Pat Ann
208-337-2126
Secretary: Janet Stanger
377-0746
Treasurer: Melanie Smith
385-0085 or cell
608-0101
Membership Officer: Irene Chandler
318-8182
Librarian: Judy Tallent
208-615-1857
Web Master: Vila Cox
323-7736
Newsletter Editor: Rebecca Winter
859-2822
Sample Exchange: Al Hayden
343-7300
Spinning Study Group: Melanie Smith
375-9172
Weaving Intensive Study Group: Mary Berent
939-8906

COE Study Group: Mary Berent 939-8906
Day Weaving Study Group: Anne Oglevie 208-994-2725
Bobbin Lace Study Group: Vila Cox 323-7736

Website

<http://www.handweavers-guild-boise.org>

Note: This Newsletter is located online at this address.

Tail of Two Yarns

This is a tail of two different yarns that joined together to make a beautiful finished piece.
The two (or more) yarns that gathered together were of different pedigrees.

Some were LARGE

some were small.

Some were from one kind of plant

some from another kind.

And then there were those from various critters.

In each finished piece there was a something from two different pedigrees.

Two different sizes of one or more fibers

Or

Two different fibers

(two plants)

or

(two critters)

Or

(one plant and one critter)

The same tail goes for those crafty spinners.

Two different sizes of one or more fibers

Or

Two different fibers

(two plants)

or

(two critters)

Or

(one plant and one critter)

Plied, Cabled, Blended or whatever else may apply.

The Fine Print

The two different yarns need to be easily seen

Made by you this year (Nov 2013 – Sept 2014)

Short pieces of each yarn to be supplied with finished item

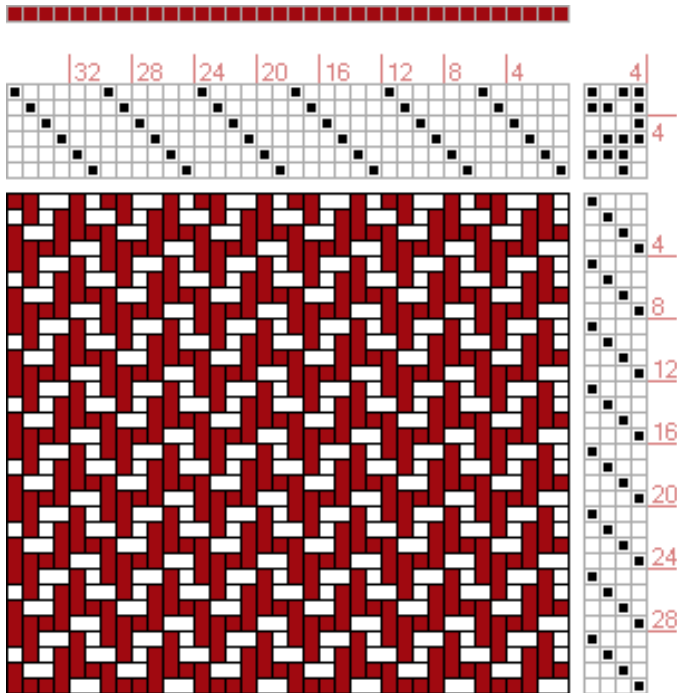
Same for spinners (yarn/fiber)

Challenge 2014

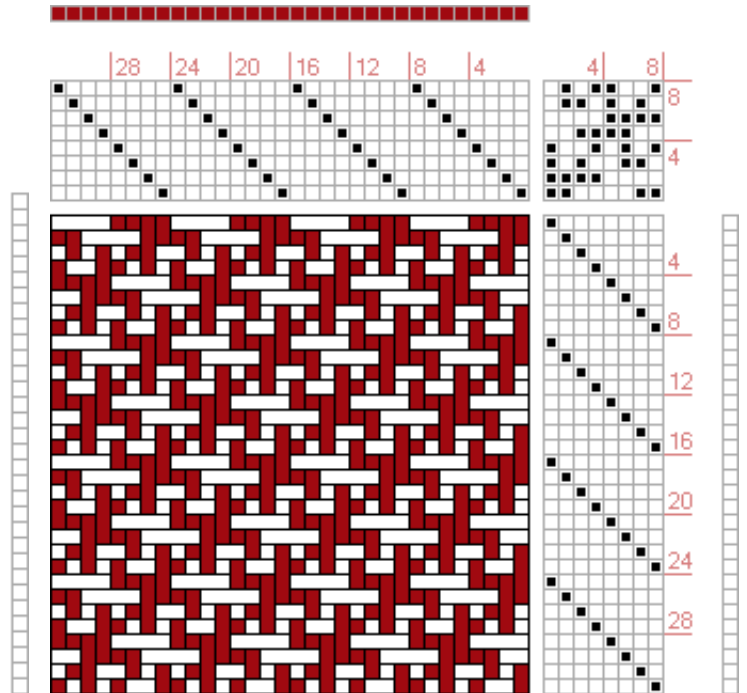
Draft Inspirations

The following drafts are from <http://www.handweaving.net> You can go there and enter the number to see all the specifics about each draft, as well as download a .wif file. Some sweet Twills.

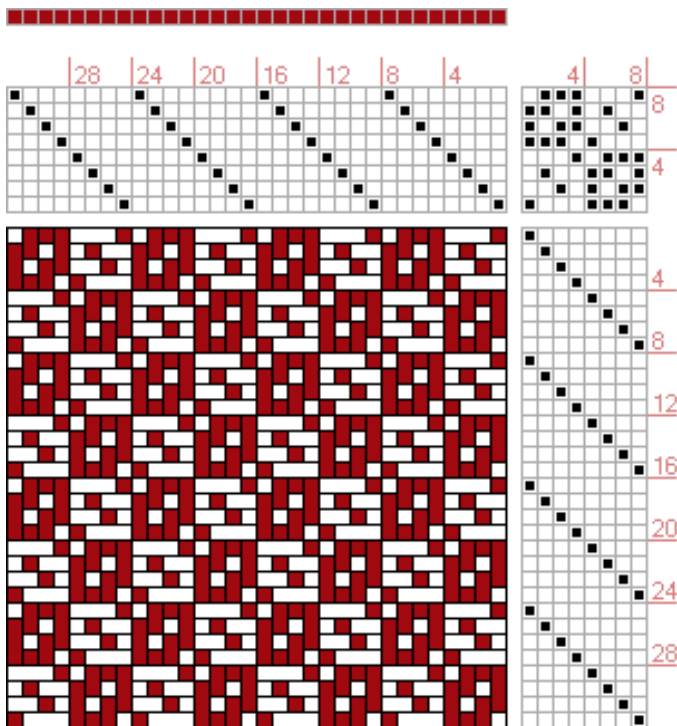
Draft #53915



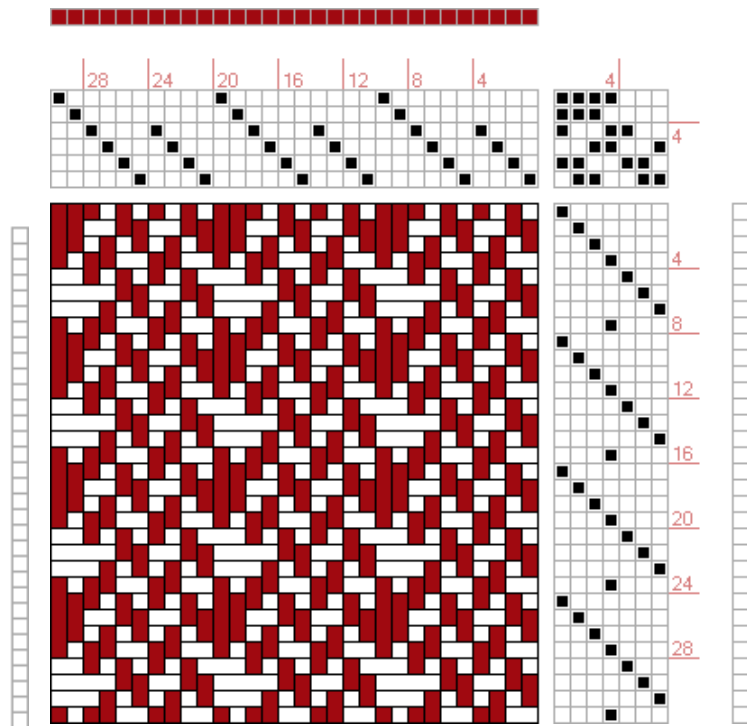
Draft #53911



Draft #53934



Draft #53980



Connecting Threads
PO Box 6258
Boise ID 83707

The monthly newsletter from the



handweavers guild of boise valley, inc.

