

Connecting Threads

handweavers guild of boise valley
February, 2018

February Program: The Wild World of Spindles, by Melanie Smith

This month our program will be on the Wild World of Spindles. Plan to stick around and learn about different regional spindles that were, in a lot of ways, developed by necessity and function, instead of beauty.

◆ Melanie Smith, Vice-President

Calendar of Events

February 3, 2018 - COE Study Group
10:00 a.m. - Before the Regular Meeting,
At the Church

February 3, 2018 - Regular Guild Meeting
11:30 a.m. - Business Meeting
12:30 pm.-Program: **The Wild World of Spindles,**
by Melanie Smith
At the First Congregational Church of Christ,
2201 Woodlawn, Boise, in the Banquet Room

Study Groups:

February 7 & 21, 2018 - Knit and Crochet Group
1:00 p.m. - 3:00 p.m.
Aero Cafe

February 6, 2018 - Bobbin Lace Group
10:00 a.m. - 12:00 noon
Vila Cox's Home

February 10, 2018 - Spinning Study Group
10:00 a.m. - 12:00 noon
Penny Schraufnagel's Home

February 20, 2018 - Day Weaving Study Group
12:30 p.m.
Julie Gerrard's Home

February 22, 2018 - Rug Punch and Punch Needle Meeting
1:00 p.m. - 4:00 p.m.
Location TBA



Bead Weaving Mini-Class

Esther Kleinkauf will teach a class on bead weaving. It will be held on April 21, from 10 am to 3 pm, at the Boise Public Library main branch. All supplies kits for this class need to be purchased before the class. Esther will provide kits for sale before the class date. You will also need to bring a warped bead loom to class. Sign up sheets will be available at the guild meeting along with a sample of the project. If you have any questions please let Melanie or Esther know.

◆ Melanie Smith, Vice-President

Circles Weaving Intensive

What a fun couple of days of weaving everyone had at this year's Intensive. I know I enjoyed each and every draft that was there, yes, even the Bateman. If you weren't able to attend make sure you check out the Guild Library copy of the notebook. Next year's topic looks to be a very interesting, so please plan to attend and start looking for those fractals and or undulating drafts.

◆ Melanie Smith, Study Group Chair

January Program

I would like to thank Mary Berent for a wonderful program on Mary Meigs Atwater. It was well worth the wait. What a very interesting woman she was. Please if you have the time read her biography called *Weaving a Life: The Story of Mary Meigs Atwater*. There is a copy in our library.

◆ Melanie Smith, Vice-President

From Your President

January has been a busy month for my weaving and fiber study. First came the Weaving Intensive where we studied 'Circles'. There was a good variety of circle patterns to weave and try to make that perfect circle! It was challenging for me. I was more successful at some patterns and challenged by others. That is why I find the Intensive so interesting. For a relatively new weaver the Intensive is an opportunity to expand my experiences. I do not have to set up my loom for every pattern, I get to weave the patterns others have chosen. For me, our Intensive was very successful and caused me to stretch and practice my skills on weave structures new to me.

A couple of days after the Intensive my husband and I flew to Denver to the Western National Livestock Show. This is a huge gathering of all breeds of bovine, horses, sheep, pigs and more. What I found of interest were Yaks. What an amazing, hairy animal! It is the yak hair that caught my attention. I was able to attend a seminar by Wini Labrecque, she seems to be the guru of yak hair, which makes amazing yarns. She demonstrated how the down from the yak is harvested. If you wonder why yak down is an expensive yarn seeing this process would answer your question. In the International Yak Association booth she displayed the three different weights of hair found on a yak. In other booths there were products for sale made of the different weights of yarn. The seminar was so interesting, Wini is mainly a spinner, but she is familiar with weaving and most varieties of yarns, so she provided tips and suggestions of how to use yaks yarns. Yak yarns, the highlight of my trip.

I did get some yak yarn to weave, it was hand woven in Tibet. It is not just the down, but a mixture of down and the next layer of hair. I will bring it to 'show and tell' at our next meeting. At some date I'll bring back a woven scarf made with this yarn.

Oh, I also watched cow dog competitions, they were fun to watch. So amazing to watch those dogs as they try to out-smart the cattle and put them in a designated place.

At our meeting in February as we introduce ourselves be ready to tell what fiber you enjoy using most in your fiber arts projects.

◆ Greta Ankeny, President



Equipment For Rental

The Guild has equipment for rent as listed below. Items can be rented for one month at a time, with the rental fee due at checkout. If there is no waiting list for an item, the rental can be extended by paying the next months rental fee. If you would like to rent equipment, make arrangements with Vila, the Equipment Chair. Rental agreements are available on the equipment shelves in the library.

Weaving Equipment

Warping board - \$5/month

Warping raddle - \$5/month

Spool rack - \$5/month

Inkle loom - \$5/month

Rigid heddle loom - \$5/month

Tapestry loom - \$5/month

Spinning Equipment

Fricke drum carder - \$5/month

Coarse drum carder - \$5/month

Pat Green picker - \$5/month

Schacht wool hand cards - \$5/month

Cotton hand cards - \$5/month

Indigo Hound 4-pitch wool combs - \$5/month

Other Equipment

Rug Strip cutter - \$5/month

Bead Loom - \$5/month

Display Unit - \$10/month

Mannequin - \$5

◆ Vila Cox, Equipment Chair

Membership News: February

Mystery Member

Who Is This Mystery Member?

This month's clues are:

1. First college degree was in Animal Science.
2. Has had 3 quilts juried into a national quilt show.
3. Has a second degree black belt in Ninjutsu.

The first person to notify the newsletter editor correctly will have bragging rights for the January Mystery Member, whose identity will be published in the next Newsletter.

Last month's Mystery Member was Nancy Alzola. Here are the clues which were given:

1. Born in the Cow-Chip-Throwing town.
2. At one time had 9 cats.
3. Have a niece named Bambi.

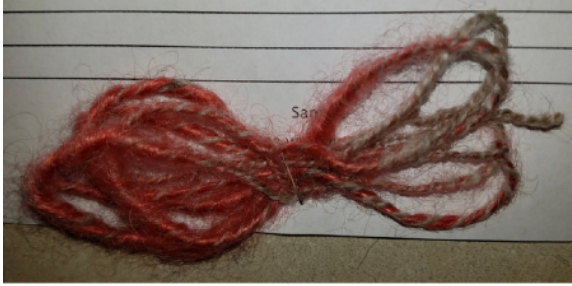
No one guessed correctly this month. By the way the Cow-Chip-Throwing town is Beaver, OK.

◆ Rebecca Winter, Newsletter Editor



Sample Exchange News

This is a two-ply yarn, plied from singles Shetland wool with mohair locks also plied into it.



◆ Jinks Hunter, Sample Chair

Editor's Note: This month's sample is from Jinks, herself.

Sample Exchange Box

Members may pull samples from the Sample Exchange Box at each regular guild meeting. And remember to check your name off the list in each file folder. If you would like to participate or have questions, contact the Sample Chairperson. Also, remember, there are samples from last year that are available to anyone toward the back of the box.



Study Group News

Certificate of Excellence Study Group

The next meeting of the COE Study Group will meet on February 3 at 10:00 am at the Church before the regular meeting. If you have ever thought of earning your Certificate of Excellence, this group can offer support and encouragement. All are welcome; for more information call Mary, 939-8906.

◆ Mary Berent, Study Group Chair

Bobbin Lace

We will meet on February 6th** - 10 am Vila's house. ** **Shifted to the 1st Tuesday** in Feb only.

◆ Vila Cox, Study Group Chair

Day Weaving Study Group

The day weaving study group will be meeting on Tuesday, February 20, 2018, at the home of Julie Gerrard at 12:30 pm.

Please know all are welcome to join this group.

◆ Vila Cox, Study Group Chair

Spinning Study Group

February's spinning study group will be February 10th at Penny's home. The fun starts at 10 am until 12-ish, plan to bring your wheel or spindle or any project you would like to work on for a fun morning of making stuff. If you have any questions or need directions just let Melanie know. yarnsnthreads@aol.com

◆ Melanie Smith, Study Group Chair

The Rug Punch - Punch Needle Group

The February Rug Punch-Punch Needle Meeting will be February 22, location TBA. If you have questions, please feel free to call me at 208-466-1240.

◆ Pat Day Hartwell, Study Group Chair

January Meeting Minutes

Board Meeting - January 6, 2018

Policies

The board has worked together to review and update the policies. We also need to develop a new policy for the new Event Coordinator position. We will revisit this at the end of the year since it is not an elected position.

Vice President, Melanie Smith

On April 21, 10AM-3PM Esther Kleinkauf will be teaching a beading workshop at the downtown public library. While this venue is free, there is a policy that no items may be bought or sold at the library. All participants will need to bring their own materials or pre-purchase them at a separate site prior to the workshop.

We need to work on ideas for the Fiber Arts Olympics for the June meeting.

Treasurer, Vila Cox

A clearer budget has been developed. The only significant change is showing the funding that has been allocated to equipment and library expenses in prior years and not yet spent. There is about \$4000 currently in the checking account.

Library & Equipment

Ideas for how to make the library more accessible: Post open library hours and available equipment in the Newsletter.

The board will need to appoint a new Librarian in the spring. Vila has volunteered to be the Equipment Chair next year. The book and equipment inventory is fairly up to date, but we still need a cabinet so the equipment items from Rebecca's garage can go in it.



Webmaster, Vila Cox

A print out of the current website was reviewed and discussed. Ideas for changes include:

- Change menu items along top and bottom to not have multiple links to the same page
- Keep the system where the top menu is for the public and the lower menu is more for internal matters.
- Move the links for Workshops and Study groups to the lower menu.
- Make the home page more grabbing, likely with a photo.
- Add the logo to the homepage.
- Add a link to the menu to the Guild's Facebook page.
- Supply Webmaster with content to update:
 - Images of projects for gallery
 - Links to portfolio or professional websites to add

Membership Officer, Rebecca Winter

Membership forms were given to Lily Lee, Secretary to collate to help identify areas of high interest for future programming.

- ◆ Respectfully Submitted, Lily Martina Lee, Secretary



Members Meeting - January 6, 2018

Present: Lily Lee, Cynthia Newman, Jean Zaske, Esther Kleinkauf, Marita Turner, Cindy Schafer, Jinks Hunter, Doug Ranck, Christine Brady, Richard Huddleston, Paula Huddleston, Mary Berent, Jenni Jimmerson, Greta Ankeny, Penny Schraufnagel, Dee Verti, Julie Gerrard, Joan Sheehan, Rebecca Winter, Melanie Smith, Nancy Alzola, Vila Cox, Katzy Luhring, Mitzi Meyers, Pat Day Hartwell

Greta Ankeny, President

Introductions - Share what your favorite fibers resources are.

Free Table

Rebecca Winter, Historian is giving away many old samples going back to sample exchanges from the 80's that are duplicates from the collection she is archiving. There is a special spinning sample by Linda Mercer who is a previous world record holder for the finest handspun yarn. This sample is 28,225.428 yards per pound. After a guess-a-number giveaway Dee Verti won it.

Melanie Smith and Penny Schraufnagel, Vice Presidents

Thank you to everyone who participated in the Holiday Mug Rug Exchange last month.

The January program will be a on the life of Mary Meigs Atwater by Mary Berent. February's program will be about the Wide World of Spindles by Melanie Smith.

In April Esther Kleinkauf will teach a beading workshop at the downtown public library. While the library does not charge us to use their classroom they do have a policy that items may not be bought or sold on their premises. All workshop participants will need to acquire their supplies before the workshop.

Show and Tell

10 members had shows and 7 had tells.

Highlights: Ryan Huddleston shared a beautiful handmade tabletop loom made by his brother in law, Greta Ankeny shared a set of towels made with 10/2 cotton warp and linen weft, Rebecca Winter brought in several items including a thrum ball, weave samples and several handmade books including an endearing mini journal.

Fiber Arts Trivia -Secretary, Lily Lee

Another month of Fiber Arts Trivia questionnaires were distributed to members present for this cumulative competition.

ANWG

The website has been revamped. The next conference will be in Prince George, Canada. The conference after that will be in Montana.

Rebecca Winter

The bylaws are state incorporated and fairly challenging to update; the policies and job descriptions are more fluid. The board is working to revise our policies and job descriptions.

Treasurer, Vila Cox

The current budget was shared. It is based on 55 members, which is where we currently are. Managing expenses is important. The equipment spending is not over budget because we are contributing \$200 per year to it which can be rolled over year to year to save up for larger purchases. In 2017 the Guild had approved \$2,000 for equipment purchases that is just starting to be spent. There is currently \$4952 in the checking account and \$6910 in savings.

Librarian, Cindy Schafer

We will be sending reminders about overdue items. The inventory is currently being updated and will be posted soon.

Membership Chair, Rebecca Winter

Mystery Member

Clues:

1. Born in the Cow-Chip-Throwing town.
2. At one time had 9 cats.
3. Have a niece named Bambi.

The Mystery Member is Nancy Alzola. Nobody got it right.

Equipment, Vila Cox

There is a wait list for wool processing equipment. The library opens at 10AM on meeting days.

Sample Box, Jinks Hunter

Lily Lee wove this month's sample with tea bag string warp and bright lime green polyester bag closing string weft.

Newsletter Editor, Rebecca Winter

I edit information for the newsletter, I do not write it. Please send me your information to add to the newsletter.

Webmaster, Vila Cox

The board is working on updating the website to include more images among other changes.

Study Groups

Day Weaving Study Group, Chair –Anne Oglevie –Meets at Vila Cox’s house

COE Study Group, Chair –Mary Berent –Meets before the regular meeting every other month.

Spinning Study Group, Chair –Melanie Smith –Meets at Penny Schraufnagel’s house

Bobbin Lace Study Group, Chair –Vila Cox, Study Group Chair

Rug Punch Study Group, Chair –Pat Day Hartwell

Knitting and Crochet Study Group, Chair –Melanie Smith
♦ Respectfully Submitted, Lily Martina Lee, Secretary



FOR SALE

Leclerc Artisanat Maple Jack Loom with Leclerc Bench

36" weaving width, 4 Harness 6 Treadles, 2 Reeds-10 and 12 Dent

One owner purchased in 81' Great Condition
46"W X 32"D X 45"H fold to 14"

Asking \$800.00

Call 360-220-0350 or contact Jenni at
jenninotary@hotmail.com



Officers and Chairs

- President: Greta Ankeny 208-318-6028
- Vice-presidents: Melanie Smith 208-385-0085 & Penny Schraufnagel 208-208-342-1288
- Secretary: Lily Martina Lee 208-922-8612
- Treasurer: Vila Cox 208-323-7736
- Membership Officer: Rebecca Winter 208-859-2822
- Librarians: Cindy Schafer 208-375-6736 & Joan Sheehan 208-794-6049
- Web Master: Vila Cox 208-323-7736
- Newsletter Editor: Rebecca Winter 208-859-2822
- Sample Exchange: Jinks Hunter 208-867-2953
- Equipment: Vila Cox 208-323-7736
- Events Coordinator: Janet Stanger 208-377-0746
- Spinning Study Group: Melanie Smith 208-385-0085
- Weaving Intensive: Melanie Smith 208-385-0085
- Day Weaving Study Group: Vila Cox 208-323-7736
- COE Study Group: Mary Berent 208-939-8906
- Bobbin Lace Study Group: Vila Cox 208-323-7736
- Rug & Needle Punch Meeting: Pat Day Hartwell 208-459-4324

Website

<http://www.handweavers-guild-boise.org>



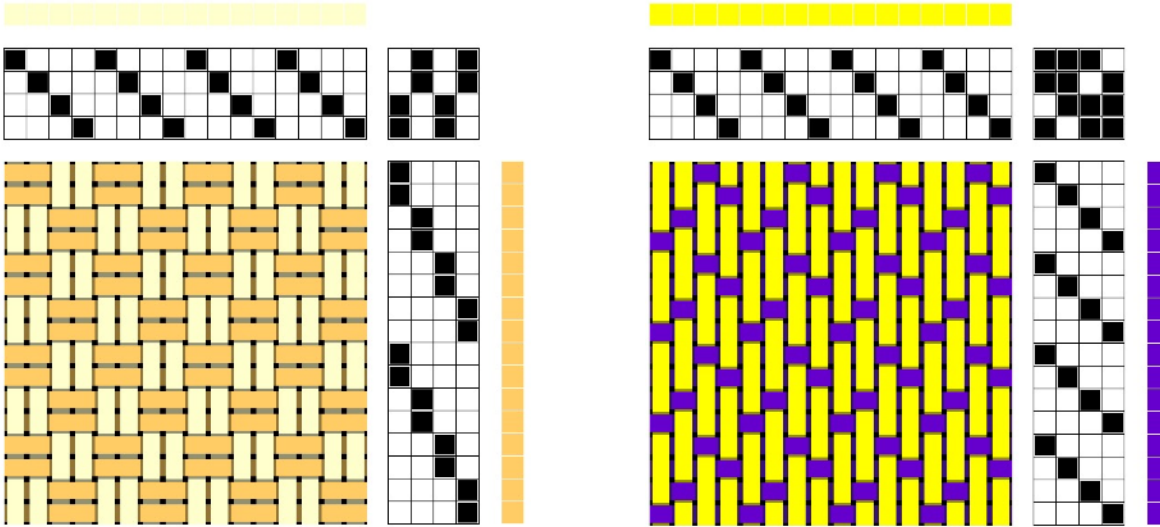
Draft Inspirations

The following drafts are from <http://www.handweaving.net> You can go there and enter the number to see all the specifics about each draft, as well as download a .wif file. Note: There is now a minimal subscription fee for the site.

Back to Basics

Draft #14

Draft #56



Or an Undulating Twill - Draft #61537

