

# Connecting Threads

Handweavers Guild of Boise Valley  
February, 2022

🌸 Come in Person to the Meeting 🌸

February 5, 2022

Please Note: This month only we will be Meeting at 12:00 Noon

The meeting will be held at the  
First Congregational Church of Christ,  
2201 Woodlawn, Boise, in the Banquet Room.

Regular Meeting at 12:00 noon

Or Join the Meeting via Zoom.

Look for the link via email or in groups.io Here.



~February Program: Lace, by Raelene Viste~

Raelene will be discussing lacemaking in our February program. She will have examples of old and new laces made by at least ten techniques. Raelene currently practices lacemaking using several techniques: bobbin lace, knitting, tatting, Armenian lace, netting, and Teneriffe. She will also demonstrate tatting, and possibly one of the other crafts, if time permits. Please join us to discover aspects of lacemaking you might not have known.

◆ Connie Griffin & Mary Berent, Vice Presidents

## Calendar of Events

February 5, 2022~

12:00 noon. - **Lace, by Raelene Viste**

At the First Congregational Church of Christ,  
2201 Woodlawn, Boise, in the Banquet Room

~~~~~

Special Events:

April 8, 9 & 10, 2022 ~ Color in Composition  
Workshop, by Cynthia Newman

May, 2022 ~ Understanding Twist Workshop,  
by Lynn Ruggles

Study Groups:

February 8, 2022 ~ Bobbin Lace

10:00 a.m. ~ At Vila Cox's home

February 15, 2022 ~ Day Weaving Study Group

10:30 a.m. ~ At Rebecca Winter's home

Thursday Fiber Friends Zoom

2:00 p.m. ~ Every Thursday

March 29, 2022 ~ Garment Study Group

10:30 a.m.

Spinning Study Group ~ TBD



## Upcoming Workshops

See the fliers later in this issue of the Newsletter! They are filling up fast.

◆ Mary Berent, Vice President



## From Your Past President

To Twill or Not To Twill, can you do it?

So what is the meaning of this? There are several twill drafts to choose from and many variations of those. Did you know there are about 76 thousand drafts give or take a few thousand? So if you could do one a day it would take you what? - 208 years by my calculator, but I could be wrong. Not counting leap years. Now, we are talking about 4, 6, 8, and 16 shaft looms for starters, so the BIG question is??? Where or what style of twill are you - point, straight draw, broken? Oh yeah, some are broken all right - foot, knee, hip, shoulder, or head, oh my, but what to do? How about one of those Jeopardy show wheels that we spin and where it stops that is where we are? Maybe we should start a study group on the probability of the wheel stopping where we want to get off. We could get lots of fun hours at this game, have the contestants go home and weave what is chosen for them and bring the woven object back at the next get-together. I will be long gone if I say I will attempt to do them all, just sayin. How cool is that!

Now seriously, we had a great time at the Twill Intensive, made me realize that the Rabbit Hole/Black Hole that I am spiraling around in - I'm holding hands with several others of you. So I am not alone, hovering and trying real hard not to succumb to the depths. Care to join in the fun? Intensives and Workshops are a great place to adjust your interests in fibre arts; a couple of you are multi talented.

So twirl a twill, spin the big wheel, see your doctor if you will, but me? My foot is stuck in a rabbit hole.

Willfully submitted by your ex-president Doug, under self duress. My foot is stuck.

Fibre on.

◆ Doug Ranck, Past President

Note: I decided this was so good, it would be your presidential statement this month. Thank you, Doug. Cheers, Rebecca

## New Study Groups Forming

Watch for information about two new Study Groups forming. The two are Tapestry Weaving and Beginning Weaving. Look for details as they are developing.

By the way, Georgianna Goetsch in Garden Valley has a couple of Hockett Looms for sale. Contact her if you are interested. A couple of members are using these for Tapestry Weaving.

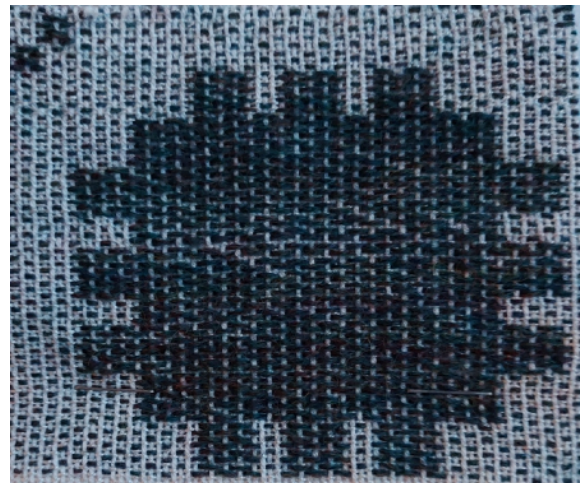
◆ Rebecca Winter, President

## Sample Exchange

Jennie Jimmerson has provided the handwoven sample for February. It is the 8 shaft, 14 treadle, Summer and Winter draft that she used to weave a king size coverlet designed from page 156 of *A Weaver's Book of 8 Shaft Patterns* by Carol Strickler. The warp is off-white tea bag cotton, the weft is 20/2 Jagger Spun Wool (agate color), and 20/2 Astra cotton in Natural for Tabby.

You can get your copy of the sample at the March meeting, as I will not be able to attend in February.

◆ Julie Gerrard, Sample Chair



## Day Weaving Study Group

Day Weaving will be meeting at Rebecca Winter's home in February. The date is Tuesday, February 15, 10:30 am. Rebecca's address can be found in the Guild directory. All Guild members are welcome. Bring your projects and questions.

◆ Greta Ankeny, Study Group Chair

## Garment Study Group

Garment Study group will be meeting next on March 29, 2022, at, 10:30. Consider attending if you have created a garment, want help planning a garment from your handwoven fabric, or merely have an interest in creating garments. This group will provide support and encouragement to help you along your way.

- ◆ Greta Ankeny, Study Group Chair

## Thursday Fiber Friends Zoom

This is a great way to just hang out at home, show each other what we are working on, ask about project issues, inspire, encourage, and laugh. Hope you'll join every Thursday at 2:00 pm. Watch for the the Zoom link in an email.

## Bobbin Lace Study Group

The Bobbin Lace group will meet at Raelene Viste's February 8th at 10am.

- ◆ Vila Cox, Study Group Chair



## May, 2022 ~ 3 Day Spinning Workshop ~ Understanding Twist

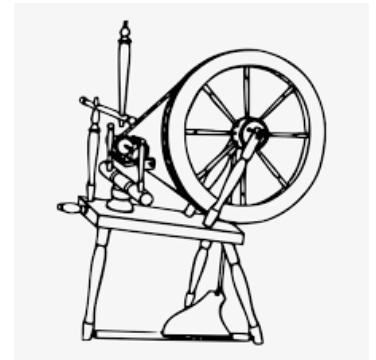
**Instructor: Lynn Ruggles**

**Dates and Location TBD**

Ignoring color changes, the name of the sheep who grew the fleece, or whether it is natural color or dyed, do you always spin the same yarn? Do you adjust your spinning to get the yarn you really want, whether thicker, thinner, smoother, lumpier; or have you decided to stick with your tried and true old faithful yarn default? You can spin other yarns, and this class will show you how to adjust your spinning to match what you want.

As spinners, we all know that twist holds fibers together to create yarn. But, how much twist do you need? There are many different fibers from all the various breeds of animals, such as sheep, goats, camels, and alpacas, as well as insects, and natural and manufactured fibers from plants. In this class, we will play with fibers as we talk about twist. You will learn how to set up your wheel for the yarn you'd like rather than the yarn you always spin, how to calculate spinning ratios, how to spin a consistent yarn, and ways to combine unlike fibers. We will work with a variety of fleeces and fibers in various combinations to create our own repertoire of plain and fancy yarns.

Cost is \$135.00. Send to Mary Berent to hold your space in the Workshop.





### **Color in Composition - Weaving Workshop with Cynthia Newman**

Color in Composition is a 3-day round-robin style workshop focusing on thinking creatively about our use of color. Using block designs, we will explore how block size and proportion along with color selection work together to create the mood of the cloth from energizing to calm. We will discuss thinking intuitively about color using all of our senses and understanding color theory as a reference tool. While maintaining our personal preferences for color, we will learn how to create depth and balance in our handwoven cloth.

4 and 8 shaft designs will be provided which address design considerations, including proportion, symmetry and asymmetry. Beginning with warp stripes in different color combinations and stripe proportions, students will apply weft color and treadling variations to the blocks and observe the interaction.

This workshop is designed for beginning and intermediate weavers. Turned twill blocks (8-shaft) and summer & winter blocks (4-shaft to 8-shaft) will be used. Students will warp their loom with 10/2, 8/2 cotton, or 8/2 Tencel. A large selection of colors wound on bobbins will be available for the students to use and explore. The Instruction will include PowerPoint illustrations along with fabric samples which will be outlined in the workshop notebook.

The workshop will be held Friday April 8, Saturday April 9 and Sunday April 10, 2022. The cost of the workshop is \$125 which includes the material fee.



### **Meeting Minutes for January 8, 2022**

The meeting was called to order by president Rebecca Winter. Other members present: Vice-presidents Mary Berent and Connie Griffin, Treasurer Sally Johnston, Membership officer Dagmar Rapp, past president Doug Ranck, Jean Zaske, Julie Gerrard, Vila Cox, Chris Farrin, Kelly Sandusky, Kathy McGowan, Raelene Viste, Chris Brady, Linda Morton-Keithley, Katie Janiak(?), Cynthia Newman, Anne Oglevie, Katzy Luhring, Michal Swenson(?), Dyan Lay, Janet Stanger, Jeannie Phillips and Barbara Redmond.

The meeting began with introductions of members, new members and visitors. Rebecca also asked us to share with everyone our areas of interest and our goals for the coming year. What a wonderful way to start off the new year!?!

Business:

The nomination committee for next year's officers were announced. Mary Berent, Mitzi Meyers and Julie Gerrard will announce the nominees at our meeting in March.

Policies, et.al. 33 documents were updated. Policy (the Theory and Best Practice Policy) 10 of which were updated, (three of which are new) and seven remain unchanged from 2019. Job descriptions (details of how we do the work) included 19 job descriptions were updated, three of which are new. Guidelines for informational and suggested process involved updating three sheets and one form was updated. Dagmar made a motion to accept these changes and Connie seconded it and all present voted in favor. For more information see our website for details.

It was announced that future Zoom meeting notices will be given out **only** via groups.io, our emailing system for privacy.

The spinning study group will continue to have Dagmar as co-chair. The meetings, as we know them, are on hold and will be visited at a later date. In the interim Mitzi will consider hosting a social spinning group once per month. Rebecca said that study groups need to have a designated leader to "keep things going." Mitzi said she would look into the requirements for leading a group.

Brief Reports:

Vice presidents: Today's program will be favorite fiber books. In February Raelene will present a program on lace making. In April Cynthia Newman will offer a workshop on color for \$125.00 per person. Then in May Lynn Ruggles will offer a workshop on Understanding Twist.

Sample exchange: Julie Gerrard reminded us that there are samples available.

Membership chair: We currently have 72 paid members in our guild! Yay!

Outreach Committee: Janet Stanger said she needs more volunteers on the committee as she has offered to provide demonstrations for 5<sup>th</sup> graders at a nearby grade school. She passed around a sign-up sheet. She also mentioned she plans to make up kits for the demonstration.

Treasurer's report: Mitzi reported that we have sufficient funds for all events scheduled for this fiscal year. She gave detailed numbers, however we will not be printing those in this public forum.

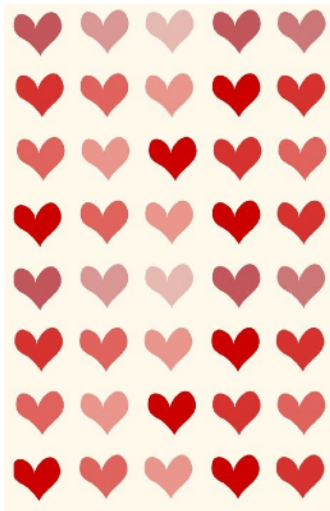
Rebecca reported there is information on our groups.io regarding the upcoming "Weaving Intensive."

The next meeting will be held on February 5<sup>th</sup>, 2022.

As the meeting ended, Show and Tell followed. So many inspiring pieces of art.

After a break the vice presidents introduced the program "Favorite Fiber Books -A Review". We enjoyed a diverse and scrumptious array of books. I went to the library to see if we had any of these books available for check out.

➤ Respectfully submitted, Sally Johnston,  
Secretary



### Officers and Chairs

- President - Rebecca Winter
- Vice President - Mary Berent
- Vice President - Connie Griffin
- Secretary - Sally Johnston
- Treasurer - Mitzi Meyers
- Membership Officer - Dagmar Rapp
- Librarian - Sally Johnston
- Web Master - Vila Cox
- Newsletter Editor - Rebecca Winter
- Sample Exchange - Julie Gerrard
- Outreach Committee - Janet Stanger
- Social Media - Dyan Lay
- ANWG Representative - Connie Griffin
- Spinning Study Group - Dagmar Rapp
- Weaving Intensive Study Group - Connie Griffin & Rebecca Winter
- Day Weaving Study Group - Greta Ankeny
- Garment Study Group - Greta Ankeny
- COE Study Group - Mary Berent
- Bobbin Lace Study Group - Vila Cox
- Thursday Fiber Friends Zoom - Jinks Hunter

### Website

<http://www.handweavers-guild-boise.org>

### Mailing Address

PO Box 6258, Boise, ID 83707