

# Connecting Threads

Handweavers Guild of Boise Valley  
February, 2025



## February Program: Fun & Fabulous Fashion Show

We look forward to seeing all your "Fashions." Of any sort. See page 2 for all the details. 📖 How to sign up for the show, sponsorship, etc.

❖ Jenné Schiffhauer, Vice President, Program Coordinator

### Calendar of Events

#### **Regular Meeting:**

February 1 2025 ~ 11:30 a.m.

#### **Program ~ Fashion Show**

At the First Congregational Church of Christ,  
2201 Woodlawn, Boise, in the Banquet Room  
Next meeting - March 1, 2025 - at the Church

#### **Study Groups:**

February 12, 2025 ~ Spinning Study Group

11:00 a.m. to 2 p.m.~ At Rubaiyat Bookstore  
314 S 6th Ave, in Caldwell {2nd Wednesday}

Feb. 13, 2025 ~Beginning Weaving Study Group

6:00 p.m.~ At the home of Jamie Landry

February 16, 2025 ~ Paper Study Group

1:30 p.m.~At the home of Rebecca Winter

February 11, 2025 ~ Lace Study Group

10:00 a.m. ~ At the home of Raelene Viste

February 18, 2025 ~ Day Weaving Study Group

10:30 a.m.~At the home of Greta Ankeny

Find her new address

February 20, 2025 ~ Tapestry Study Group

7:00 p.m. ~ At the home of Julie Gerrard

Every Thursday ~ Thursday Fiber Friends Zoom

2:00 p.m. ~ Meets on Zoom

April 29, 2025 ~ Garment Study Group

10:30 a.m.~At the home of Anne Oglevie

Find her new address

#### **Workshops:**

February 15 - Computer Weaving with Fiberworks

April 11 - 13, 2025 - Wedge Weaving

September 19-21, 2025 - Diversified Plain Weave

### Workshop Information

**Fiberworks Class, by Mary Berent:** This will be presented on February 15th, Saturday from 9-4. We have yet to confirm the location this will be, but will let you know as soon as available.

**Tapestry Weaving Workshop - Wedge Weaving:** The Connie Lippert tapestry Workshop is full, we have been able to extend the number of attendees to 14. We look forward to an another amazing workshop.

**Diversified Plain Weave, by Vila Cox:** We are so excited to share that Vila Cox has agreed to bring her workshop, "Diversified Plain Weave," to us on September 19-21, 2025. She has been asked by an east coast guild to teach this weave structure and has been preparing (as it is a lot of work) to teach what she did her to earn her COE (Certificate of Excellence). I was privileged to attend her presentation "review" here in Boise, before her presentation at the Complex Weaver Conference in Wichita, Kansas, which was truly very professional. I do believe her presentation at that major event has spurred her to teach this wonderful weave structure. I hope you ALL will be inspired to join us for this workshop

❖ Jenni Jimmerson, Vice President, Workshop Coordinator

### President's Corner

The Intensive on 'Borders' on Martin Luther King, Jr. weekend was a huge success! What a fun and smart group of weavers we are. This event is a perfect example of why this Guild is so successful, fun, and motivated. We had 13 weavers of all levels from new beginners to Master Weavers. Many of the attendees chipped-in in a volunteer capacity with making handouts binders, organizing food and arranging for the location. Everyone actually did the studying (this is a study group) and came totally prepared to share their journey and explain their discoveries. What a wonderful weekend! You can expect to see lots of borders on weaving projects in the upcoming year.

❖ Mary Berent, President



## 2025 February Fun and Fabulous Fashion Show

Hi Everyone!

On February 1 at the regular guild meeting, we will be having a fashion show to highlight our talented members' creations. Start thinking now of what you would like to model for the show. It can be anything you have created. Come with a sense of fun to model your hat, shawl, rug, coat, socks, dishcloth, or any other handmade item! Or just come to the meeting and enjoy the show!

We have found a local radio announcer to be our MC. She is not a weaver, but will appreciate the craft. We are asking guild members to donate handmade items for a thank-you basket for the announcer in lieu of payment. If you have items that you would like to donate, please let Jenne or Katzy know.

Here are the Guidelines for entrants:

1. Please model your own creation. If you choose not to, please find a substitute to show off your creation.
2. Walk slowly, smile, turn and stop several times while going down the runway.
3. Fill out an index card to hand to the announcer as you enter the runway. The card should have the following information **CLEARLY** written out so the announcer can talk about your wonderful creation. Consider writing your name phonetically to help the announcer.
  - Your Name:
  - Name of your entry:
  - Description (50 words or less) (Please include Fiber Content, Technique, what is it and what makes it special?)
4. Entrants may submit up to 3 items.
5. Participants and Donors of the announcer handmade basket items will receive prizes provided by Lunatic Fringe Yarns.



We can't wait to see what we all come up with! It is going to be a lot of fun!

Brought to you by the hard work of the members of the Handweaver's Guild of Boise Valley; and Katzy, Jenne, and all the Lunatics at Lunatic Fringe Yarns!



### December Sample Exchange

This month's lovely sample has been woven for us by Lisa Baker.

Lisa used 8/2 cotton in high contrast colors to create an interesting plaited twill. I'm in love with the basket weave look. Thank you, Lisa, for sharing!

If you would like to share your talents with the guild please let me know.

- ◆ Christie Farrin, Sample Chair

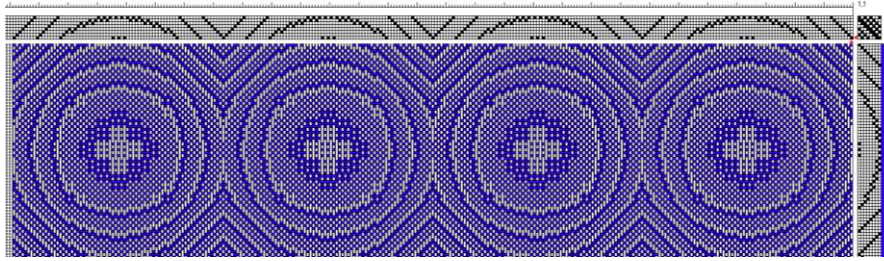


# Computer Weaving with Fiberworks PCW One Day Workshop February 15, 2025

by Mary Berent

~ 10 am to 3 pm ~

Eagle Fire Station #1, 966 E. Iron Eagle Dr., Eagle



Have you always wanted to know how to use weaving software? Have you seen beautifully printed drafts others bring to meetings and wondered how to do that? Would you like to do more with your weaving software? This is your opportunity to see if Fiberworks PCW is the software for you! We will be learning to use the program and the various menu commands and options. Fiberworks is VERY weaver friendly! Just about the time you think you would like to change something or try something different, there will be a way to do just that.

You will need to bring:

- A laptop computer, either PC or Mac, **WITH FIBERWORKS PCW ALREADY LOADED!!!**  
The demo program is free to download, please do this BEFORE the day of the workshop. <http://www.fiberworks-pcw.com> Make sure your laptop is in working order. Bring a power cord and extension cord for your laptop.
- Your lunch, we will take a short lunch break, maybe 30 minutes.
- Notebook, pen, etc for note taking if you want.

We will all be working on our own laptops. Instruction will be on a large screen so you will be able to see the different menu commands and how they can transform a draft before trying it on your own computer. Each part of the draft; threading, tie-up and treadling will be manipulated using Fiberworks, plus some things you can't do when drafting with graph paper! This will be a fun and concentrated day of computer learning and designing. If you have questions, call, message or email Mary Berent 208-901-5640 [maryberent@yahoo.com](mailto:maryberent@yahoo.com). Workshop from 10-3 with a short lunch break.



## News about Periodical Publications in our Library

Did you know that the Guild Library has years and years of issues of Handwoven, Spin Off and other magazines available to check out? And this spring we are expanding our magazine list to include Little Looms and Piecework. So, whether you want to read that one article, are trying to decide if you want your own subscription or are looking for inspiration for that next project be sure to take advantage of this great resource in our Library! ♦ Kelly Sandusky, Treasurer

## New Study Group - Beginning Warping

The focus of this study group will be to learn how to warp our looms. Specific study topics will come group suggestions and interests.

We will need a small group of interested members to help with the organization and initial planning. For example, to find out members needs and interests, when and how often should we meet, where (needs to be large enough for our looms), length of time, etc.

- Anyone interested in getting this study group started should contact Sheila Miller at [perezosa@aol.com](mailto:perezosa@aol.com)
- ♦ Sheila Miller, Study Group Chair





## Study Groups:

### Spinning Study Group

Our spinning study group **now meets the \*\*SECOND Wednesday\*\*** of each month at our regular place and time. 11-2 at the Rubaiyat Bookstore in Caldwell, Idaho.

- ❖ Jeannie Phillips, Study Group Chair

### Lace Study Group

The Lace Study group will meet February 11, from 10am to 12pm at Raelene Viste's.

- ❖ Vila Cox, Study Group Chair

### Beginning Weaving Study Group

The Beginning Weaving Study Group meeting will be on Thursday, February 13, at 6 p.m. We will meet at the home of Jaime Landry. Her address can be found in the updated directory list inside [Groups.io](https://groups.io) at this link: [Directory Link](#). You will need to log into your [groups.io](https://groups.io) account to view the list.

We will be studying Huck Lace. Take a few minutes to study the weave and bring your results to share.

Meetings are always welcome at my studio. •❖ Sherry Bittner, Study Group Chair

### Tapestry Study Group

Tapestry Study Group will meet on February 20 at the home of Julie Gerrard. Meeting to start at 7PM. We will continue our study of tapestry stitches. Don't forget to bring your cardboard loom or pick up a new one at the meeting if yours is full.

- ❖ Cindy Schafer, Study Group Chair

### Day Weaving Study Group

Next meeting - February 18, at 10:30am, at the home of Greta Ankeny.

- ❖ Jenni Jimmerson, Study Group Chair

### Paper Study Group

We will meet on February 16, at my home, at 1:30 p.m. We have chosen the third Sunday of the month to meet. We had a fun meeting in January; everyone brought some paper weaving to share, and this inspired the lively discussion.

Our focus for February will continue as Paper Weaving, with the addition of Collage.

I hope to see you here as we share more inspiration and discoveries.

- ❖ Rebecca Winter, Study Group Chair

### Garment Study Group

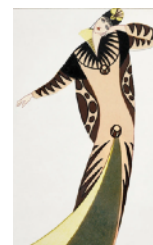
The next Garment Study group will be held on Tuesday, April 29, 2025, at 10.30am. We will meet at my new home. Everyone is welcome. Please call Anne Oglevie if there are any questions.

- ❖ Anne Oglevie, Study Group Chair

### Thursday Fiber Friends

We are an informal group who meet at 2pm every Thursday via zoom. We work on our projects, help each other with project questions and chat about whatever comes up. We feel free to stay the whole time (and make some progress on that project) or just pop in for a bit of time for a quick catch up when busy with other stuff. We're very flexible - please feel welcome to join us.

- ❖ Jinks Hunter, Study Group Chair



## Board Meeting Minutes ~ January 4, 2025

Members present:

President – Mary Berent

Vice President – Jenni Jimmerson

Treasurer – Kelly Sandusky

Secretary – Dyan Lay

Membership Chair – Cindy Griewe

Past President – Rebecca Winter

Members absent:

Vice President – Jenné Schiffhauer



### President's Report

- Nominating Committee volunteers are Rebecca Winter, Robin Conrads and Dyan Lay.

### Vice President's Report

- Jenni Jimmerson spoke about workshops:
  - Eagle Fire Department confirmed for February's Fiberworks workshop.
  - The venue for the Wedge Weave Workshop by Connie Lippert is confirmed to be the Eagle Fire Department. The workshop is full, and there is a waiting list. Workshop costs were less than budgeted so the program cost to participants was decreased to \$130 per person. Lunch will be supplied on the last day.

### Treasurer's Report

- Financial Reporting and Historical Record
  - The Board wants to provide transparency but, for security reasons, will not publish any financial data on the Guild's website or in the newsletter.
  - The Treasurer will include financial statements annually with the newsletter hardcopies stored in the Guild Library for the historical record and the annual audit will include the annual Treasurer's Report.
  - The Treasurer will include bank statements annually at the end of the Guild year (June).
  - Rebecca will update the policies to reflect that financial information will not be printed in the newsletter or provided on any Guild public forum.
  - Members are welcome to ask for detailed financial information at any time.
  - A summary of the budget report will be published in the April newsletter for the membership to vote on at the April regular meeting.
- Hanna Meinikheim filed IRS form 990S for 2023 in Fall 2024 and is scheduled to file the 2024 form in Fall 2025.
- The PatAnn Fund was used for several workshops including Rebecca Winter's in October.
- Library
  - Kelly purchased *Marking Time* for the Library.
  - She will get more information on a subscription to Little Looms magazine and will check access levels for Ply and Spin Off magazines.
  - Mitzi Meyers gets the Guild magazines now sent to her home and will continue to bring in the editions to the Library.
  - Cindy Griewe suggested that online magazine accesses be provided to the membership via groups.io email.
  - The Guild membership will be solicited for new Library book suggestions.
  - Rebecca has the complete Library inventory.

### Secretary's Report

- Dyan Lay reported that she initiated Guild participation in two retail affiliate programs: Lunatic Fringe and The Woolery. She will continue to set up the programs, and a volunteer may be requested at a later time.
- Website
  - The Website Committee was not ready to present at the January Board meeting as the Committee is still investigating point of sale options and recommendations.
  - Kelly was added to the Website Committee.
- Zoom links for online events and study groups will be refreshed in October each year to ensure current member participation and enhance online security. Dyan will be responsible for sending new links to committee/event leaders.

### Membership Chair's Report

- June 30 every year is the cut off for receiving dues and the official end of year for the Guild. Membership will be reminded of the June 30 deadline beginning in April.



- Directory
  - The Guild Directory is no longer viable to print in house, and Cindy Griewe presented three options moving forward: no change, digital directory or a hybrid of digital and printed version.
  - Dyan moved to not go to the Membership to decide the directory option, seconded by Kelly, unanimously passed.
  - After much discussion, Dyan moved that the Board adopt an all-digital Guild Directory, seconded by Jenni, five Board members approved, one dissented.
  - Digital Processes
    - Rebecca will ensure all information in the current directory goes into the historical record.
    - Cindy will send groups.io email with updated member information when warranted.
    - Cindy will print a few Guild Directories for new members that sign up at a Regular meeting.
    - Cindy will reach out to existing Directory advertisers to provide newsletter and website advertising options.

#### Past President's Report

- Policies will be discussed at the next Board meeting.

The next Board meeting is scheduled for March 1.

◆ Respectfully submitted by Dyan Lay, Secretary

### Regular Meeting Minutes ~ January, 2025

#### Call To Order at 11:32AM

- Present were 51 attendees: Mary Berent, Dyan Lay, Jenné Schiffhauer, Cindy Griewe, Kelly Sandusky, Rebecca Winter, Rose Torres, Anne Ogilvie, Katzy Luhring, Julie Gerrard, Sally Johnston, Hanna Meinikheim, Irma Atkinson, Robin Conrads, Teagan Doyle, Cynthia Newman, Lisa Baker, Chelsea DeFriez, Robi Hathorn, Jamie Landry, Nicole Phillips, Jeannie Phillips, Caroline Castel, Raelene Viste, Pat Dayton, Linda Morton-Keithley, Mary Donato, Christie Farrin, Nancy Alzola, Sara Ann Mancus, Jean Zaske, Sheila Miller, Teal Gardner, Greta Alkeny, Eddie and Candace Van Hout, Venus Kadre, Jane Hoover, Mary Araquistain, Khara Oxier-Mori, Sarah Burke, Kari Lawton, Tessa Stone, Chelsea Grigsby, Dagmar Rapp, Alyssa Bangs, Susan Inouye, Cheri Byrnes, Mecinze Berg, Nancy Swenson, and Tasha Denegal.

#### Welcome and Introductions

- Welcome by President Mary Berent with introductions by members in attendance.

#### Show and Tell

- Raelene Viste completed her “carry around” lace projects and some scrap hats.
- Cynthia Newman showed her rigid heddle Brooks Bouquet scarf/runner.
- Lisa Baker presented a thrift store woven piece and asked the membership for feedback.
- Jenni Jimmerson brought a fabulous rug she created.
- Dagmar Rapp showed photos and a woolen bag that she got on her recent trip to a Colombian indigenous village.
- Khara Oxier-Mori held up spun lace samples that will become a shawl.
- Jeannie Phillips showed shuttle tatting.
- Carrie is teaching inmates how to crochet hats at a minimum-security prison.
- Rose Torres brought a completed blue knitted scarf with her goal to include Morse code in all her projects.
- Hanna Meinikheim held up knitted Christmas ornaments and teabag samples.
- Linda Morton-Keithley presented eight-shaft loom pinwheel-design 8/4 cotton towels.
- Kelly Sandusky showed Marking Time by Tony Scanlon book and her 2024 word-of-the-day tapestry project.
- Tessa Stone brought a blue/red/yellow inkle loom piece.
- Cindy Griewe showed her NICU blue octopi.

#### President's Report

- Mary gave an ANWG update; this year the five-day conference is in Yakima Washington.
- She spoke of the Intermountain Conference, which is in Albuquerque this year with registration starting on January 7 at their website.
- Mary announced the Nominating Committee to be Robin Conrads, Rebecca Winter and Dyan Lay. Members were encouraged to volunteer for a Board and/or Committee position because it is more fun to be a part of things.

#### Board Reports

- Vice President – Jenni Jimmerson
  - Fiberworks Workshop is upcoming (see latest newsletter for all the details), and reminded participants to bring a computer with Fiberworks already installed.



- Jenni announced that Connie Lippart's April 2025 tapestry workshop is full with 12 participants, and she is accepting payments now.
- Vice President – Jenné Schiffhauer
  - Today's program are the mini workshops, and next month's program is the annual Fashion Show. Jenné is accepting fiber pieces for a gift basket for emcee, Melissa Hart.
- Past President – Rebecca Winter
  - Weaving Intensive has 14 participants, and there will be 15 looms available. The topic is borders, and this is a teacherless workshop. Arrive with a warped loom, and it will be held at Brenda Hatch's clubhouse. See the latest newsletter for more information.
- Treasurer – Kelly Sandusky
  - The Board wants to provide transparency but, for security reasons, will not publish any financial data on the Guild's website or in the newsletter. Members are welcome to ask for detailed information at any time.
  - The Treasurer will include annual financial statements with the newsletter hardcopies stored in the Guild Library for the historical record.
  - The PatAnn Fund was used for the October and Connie Lippart workshops to defray the cost to participants.
- Secretary – Dyan Lay
  - Dyan had no report.
- Membership - Cindy Griewe
  - Cindy announced that membership is over 100 people.
  - The Board decided to go to an all-electronic format for the directory and handbooks, so Cindy will be providing directory updates via groups.io email.
  - Dues are due at the end of June.

Committee Chairs

- Sample Box – Christie Farrin
  - This month's sample was a cotton towel piece provided by Kelly Sandusky.

Meeting adjourned at 12:06PM.

- ◆ Respectfully submitted by Dyan Lay, Secretary



# The Absolutely Impossible Warp

The ancient wisdom teaches that every stumbling block is a stepping stone if you make it so. This is certainly true in weaving. Your warp thread is broken and you've nothing to mend it with? Paste it. There's a craft paste that dries clear; roll the frayed ends together with clean fingers, separate the warp threads long enough to dry, and you'll have a strong thread that will hold and be covered up in the weaving. A mistaken threading? Add a heddle or two. Too many warp threads for your pattern? Take them off, braid the skein and store away; some day they'll come in handy. I've even taped warps together.

And so it is with the absolutely impossible warp.

I'm a stubborn creature. When my beginning weaving teacher, a quarter century ago, said I wasn't advanced enough to do the linen fingertip towels in Bronson lace that I proposed, I wove a hundred of them, and they were beautiful. And just so, when I put on a warp that couldn't be woven, I wove it anyway. It was four shaft, but the solutions would be the same on a rigid heddle, tapestry or multi-harness.

My problem arose when I chose a color combination I loved, then wouldn't give up when it proved that the colors I laid out weren't warp fibers. I chose warm colors, to be woven in Swedish damask pattern, but most of them were nubbies, and one was even a narrow strip of cloth with fringe. They were perfectly beautiful, and I let myself be entranced to the point of madness. I picked out the widest reed compatible with my pattern and wound a five-yard warp. I planned placemats and a runner.

It didn't work, but I didn't give up. The reed wouldn't work, and neither would the wide-toothed comb, so I bought a hand-sized beater and ignored the stubborn reed. The warp threads stuck together even after I had gently worked the nubs through the reed when necessary. I stamped on the treadles then worked the rest of the shed apart with fingers and forearms. Those fringed cloth pieces couldn't be beaten even with the hand beater without tearing them to pieces, but they could be pushed down firmly with the edge of my left palm while beating down with the right hand.

A slow process? Yes, but even so, I worked out a rhythm. I couldn't keep at it more than one pattern unit, about 4", without going mad. The solution there is not to leave the weaving area in between stints. Once in the kitchen or garden, who would choose to go back to that kind of warp? Instead, one can clean out and sort bins and drawers, plan the next project, spin—just don't go away; go back to it.

Of course, the weft I had planned didn't work either; there was no pattern, it was swallowed up by the busy textured warp. I still loved the warm orange, yellow, natural and brown colors, though. So I made a pillow top of aqua rags, a really effective contrast with that nubby warp. Another pillow top was fur strips, but I had to be careful to cut them as wide as the warp, in ¾" strips; I didn't need to add weft problems, too. A weft yarn that disappeared into the warp gave me just enough suggestion of a pattern to make an interesting runner.

A writing professor once taught us to put fact-feeling, or feeling-fact, in every sentence. So in weaving, if you feel strongly enough about your project, it's a fact that your problems can be solved. With enough patience, persistence and creative ingenuity, even the absolutely impossible warp can be woven, if you really want to do it.

Handwoven, Jan/Feb, 1984, page 16.

Virginia Stumbough

The article at left was published in *Handwoven Magazine* in 1984. The author, Virginia Stumbough, was an avid member of our Guild in and around the 1980's. She was a wonderfully eccentric person who loved the bright colors of the time - oranges, browns, and olive greens. Enjoy reading about her perspective of "precious" warps.

◆ Rebecca Winter, Historian

## Officers

- President - Mary Berent
- Vice President - Jenné Schiffhauer
- Vice President - Jenni Jimmerson
- Secretary - Dyan Lay
- Treasurer - Kelly Sandusky
- Membership Officer - Cindy Griewe
- Past President - Rebecca Winter

## Chairs

- Librarian - Sally Johnston
- Web Master - Robin Conrads, Dyan Lay
- Equipment - Vila Cox
- Newsletter Editor - Rebecca Winter
- Pat Ann Fund Administrator - Katzy Luhning
- Sample Exchange - Christie Farrin
- Outreach Committee - Janet Stanger
- Social Media - Dyan Lay
- ANWG Representative - Connie Griffin
- Spinning Study Group - Jeannie Phillips
- 2025 Weaving Intensive Study Group - Rebecca Winter & Pat Dayton
- Day Weaving Study Group - Jenni Jimmerson
- Beginning Weaving Study Group - Sherry Bittner
- Garment Study Group - Anne Oglevie
- COE Study Group - Mary Berent
- Lace Study Group - Vila Cox
- Thursday Fiber Friends Zoom - Jinks Hunter
- Tapestry Study Group - Cindy Schaffer & Kelly Sandusky
- Tour de Fleece - Jinks Hunter
- Church of Christ Contact Person - Vila Cox
- Bowmont Church Contact Person - Rebecca Winter
- Eagle Fire Station #1 Contact Person - Julie Gerrard
- Fairview Terrace Community Center Contact Person - Brenda Hatch
- Post Office Box Name Holder - Mitzi Meyers
- Mail Collector - Mitzi Meyers

## Website

<http://www.handweavers-guild-boise.org>

## Mailing Address

PO Box 6258, Boise, ID 83707

