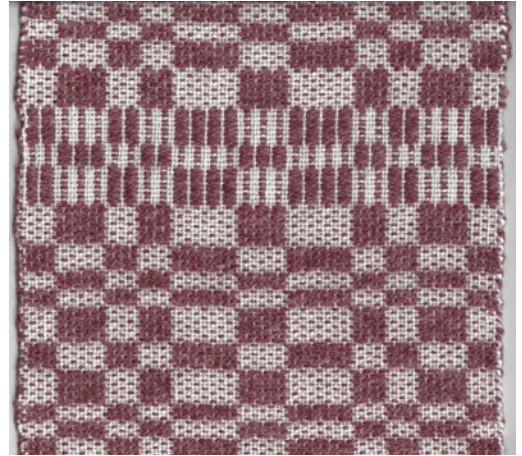


☞ Connecting Threads ☞

Handweavers Guild of Boise Valley
January, 2013

January Program: Summer & Winter, by Rebecca Winter

Come to the regular meeting and get a sneak preview of the Weaving Intensive Topic. Summer & Winter is one of those weave structures that may become a staple in every weaver's repertoire. It is a very versatile weave -- from fine table linens to rugs. It somehow seems appropriate that Rebecca is leading this program. She has been called by both names in her life.



Calendar of Events

Two Workshops to Enjoy

- January 5, 2013 - Guild Meeting
Boise Historical Museum at the Adelman House
11:30 am - Business Meeting
12:30 am - Social time
1:00 p.m. Program:
Summer & Winter, by Rebecca Winter

- January 5, 2013 - Beginning Weaving Study Group
Boise Historical Museum at the Adelman House
Immediately after the Regular Meeting
- January 8, 2013 - Bobbin Lace Study Group
6:30 pm - 8:30 pm
Rebecca's Studio House
- January 10, 2013 - Spinning Study Group
6:30 pm - 8:30 pm
Maralyn's Clubhouse
- January 12, 2013 - From Fleece to Garment Study Group
2:00 pm
Melanie Smith's Home
- January 31 & February 28 - Knitting Study Group
6:30 to 8:30 pm
Melanie Smith's Home
- January, 2013 - Day Weaving Study Group
We are not meeting this month, due to the Intensive.
- February 2, 2013 - COE Study Group
Moxie Java, 1122 S Vista, Boise
9:30 to 11:00 am

Weaving Intensive - January 19, 20, & 21, 2013
Spinning Workshop - February 23, 24, & 25, 2013
Weaving Workshop - April 27, 28 & 29, 2013

Take advantage of the lower cost workshops this year. The two workshops are being given by Lynn Ruggles, Wheel of Color and Mary Berent, Supplementary Warp. See the workshop information sheets in this newsletter. Both of these teachers are recognized national teachers and both write for the magazines you all know and love--*Spin-Off* and *Handwoven!!* Because we are lucky enough to have these talented teachers in our own guild and don't have to pay transportation expenses for these workshops, the workshops are more economical than you will ever find them again.

Don't miss this opportunity.

Don't wait to register, as both workshops are filling fast!!

6th Annual Spin in the New Year

Mitzi's home in Sweet, 11:00 am to 4:00 pm; Hope for good weather and clear roads, join us for a great day of spinning or whatever you'd like to work on and a yummy pot luck lunch. I will have beverages, (black eyed peas, and greens for luck in the new year). A carpool usually gathers at Hwy 55 and State street. (Anyone can organize this with the yahoo group.)

◆ Mitzi Meyer



Weaving Intensive

The Summer and Winter Weaving Intensive is almost upon us (January 19-21) at Baseline Systems, 10259 West Emerald Street #160 Boise, ID 83704.

For those of you already registered, please send your draft information to Lynn by January 5 (the next guild meeting) so she has time to put the notebooks together before the event. Either a PDF file or a printed document will work.

We currently have 12 members registered for this event and there is room for more. This is a relaxed, easy going environment and we welcome weavers of all skill levels. If you are a new weaver and aren't sure about taking the plunge into a weaving class, this event is geared toward helping you get your feet, or fiber, wet. Contact Lynn Ruggles for more info, patterns, yarn selection, or warping help. Looms are available to borrow if you need one.

Library

Thanks to Rebecca and Joan for helping to reorganize the Guild library. A new cabinet has been ordered and delivered which should allow easier access to the library materials.

◆ Judy Talent

Notes From Your President

So sorry to have missed our annual Christmas party. The mystery bag exchange was a marvelous hit I see from the pictures and the great basket/vessel that I received. They remind me of our exchanges in the past...the book marks, and greeting cards were a success too. I hope all of you enjoy our exchanges and challenges as much as I do. It is inspiring to see what awesome creative fiber artists we have in our group! And Mentors, and Teachers, and Enablers, and Helpers, etc. Have a marvelous holiday season! I am looking forward to another year of loving string!

◆ Your President, Mitzi Meyers



January Board Meeting

January 5th, 10 am, guild board meeting at moxie java near vista and kootenai.

Be there or be square - LOL!!

If you are the least bit curious how much fun it is to be on the board please join us to see what it's all about! And have a great coffee or tea while you are there. A nominating committee will be formed at our January meeting so please think about any job you are willing to jump in and do. We have the same board as last year. I imagine they really would like a break from these duties-as easy as they are.

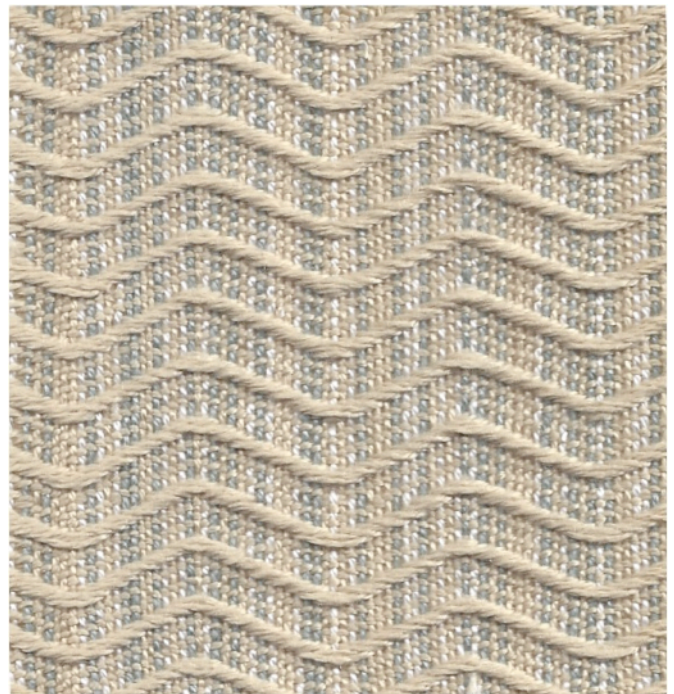
December/January Sample

This sample is provided by Anne Oglevie. It is a 16 shaft point twill in mixed cottons and Tencel. As she says on the sample it is the first warp on her new AVL CompuDobby.

It has a very interesting surface texture due to the combination of the warp face and weft face twills.

Thanks Anne!

◆ Al Hayden



Sample Exchange Box

Members may pull samples from the **Sample Exchange Box** at each regular guild meeting. And remember to check your name off the list in **each** file folder. If you would like to participate or have questions, contact the Sample Chairperson.

Also, remember, there are samples from last year that are available to anyone toward the back of the box.

Tapestry Study Group Forming

There is some interest in forming a tapestry study group. Anyone who would like to participate contact Lynn Ruggles. She has the name of someone who may offer to lead the group.

Study Group News

♥ Spinning Study Group

The Spinning Study Group will meet at Maralyn's clubhouse on **January 10** from 6:30-8:30 pm for our monthly social networking event. Bring a wheel, some fun fiber to spin, and join in the merry making. Non-spinners are welcome to come and socialize, but may be coerced into fondling fabulous fibers. Color this month is Purple Haze. Contact Lynn Ruggles for more info.



♥ Certificate of Excellence (COE) Study Group

The COE Study Group will be held on **February 2**, 2013, at 9:30 a.m. at the Moxie Java on Vista in Boise. As usual, everyone is invited. For information call Mary Berent, 939-8906.

♥ Day Weaving Study Group

We will not meet in January due to the Weaving Intensive. There has been some discussion regarding changing the day to Tuesday. If you would like to voice your opinion please email Anne Oglevie at anneroglevie@gmail.com.



♥ Bobbin Lace Study Group

We meet on the second Tuesday of every month. In **January** it will be on the **8th**, at Rebecca's Studio House at 6:30 pm. Call Vila for information, 323-7736



♥ Knitting Study Group

We will meet at Melanie Smith's home on **January 31** and again on **February 28**. Our meeting time is 6:30 to 8:30. You are welcome to bring any knitting or crochet, or UFO to work on and have a fun visit with others. For more information please email Melanie Smith at yarnsntreads@aol.com.



♥ The Beginning Weaving Study Group did not meet in December. We will meet **January 5th** after the regular meeting and program. Janet Davis will lead the discussion on finishing. All are welcome.

♥ Fleece to Garment Study Group

We will meet on **January 12** at Melanie Smith's home starting at 2 PM. We will be talking about the best way to card, comb or flick your fleece for your project, to get it ready to spin. You are welcome to bring your washed fleece and try out different carders, combs, and other equipment. In March we will talk about dyeing. We will dye locks, roving and yarn to see what happens, and which would be better for your project.

Guild Meeting Minutes

Regular meeting December 1, 2012

At the Home of Penny Schraufnagel

Present: Janet Stanger, Marita Turner, Lynn Ruggles, Al Hayden, Julie Gerrard, Melanie Smith, Ivy DeHart, Carol Freeman, Kathy Shiflet, Pat Ann, Judy Tallent, Rebecca Winter, Mary Berent, Cynthia Newman, Penny Schraufnagel, Anne Oglevie, Jean Zaska, Vila Cox and Nancy Swenson.

In the absence of President Mitzi Meyers the meeting was called to order by VP Mary Berent.

VP report: Mary went over dates and costs of upcoming workshops. Please see registration forms for dates and costs. Mary announced if you pay now checks will not be deposited until after January 1st.

Treasurers report: Melanie Smith noticed a printing error in her printed report so gave a verbal report that we have over \$4,500 in checking.

Newsletter: Rebecca Winter has set up the Yahoo Group to announce when it is time to send in Newsletter information to her. So watch for that Yahoo reminder.

Sample Box: Al announced that today's sample was provided by Anne Oglevie. It is a 16 Harness sample.

ANWG: Rebecca announced that the brochure for the conference is available online. She has a link on the yahoo group. The Conference is June 17th to 23rd, 2013 in Bellingham, Washington.

Challenge: Janet Stanger reported that the theme to the 2013 Challenge is Holidays. Full details will be released after the Intensive workshop. You will need samples of the before materials to include with the registration.

Show and Tell: Rebecca Winter shared bobbin lace Angels and a bag. Pat Ann bought a beautiful table cloth from a second hand store. Some discussion on what kind of weave it was but it was left undetermined weave. Melanie Smith made a scarf from the Habu yarn that she bought at SOAR. Al Hayden finished the quilt that he borrowed from one of Kathy McGowan's UFO's. He also showed a universal draft finger tip towel. Woven Shibori, book by Catherine Ellis. He showed samples of what it looks like woven. What it looks like with the threads pulled and what it looks like all done. Marita Turner shared rovings that was given to her from the Hailey, Idaho Trailing of the Sheep Festival. Jean Zaske shared a shawl she had woven on a triangle loom. She also shared a Reboza scarf from Mexico. She showed a button and bead Christmas tree ornament that she made. Penny Schraufnagel showed a variety of scarves she had made experimenting with 1 warp and different wefts. Mary Berent shared scarves she had made for the Christmas sales using a twill and carpet warp.

Intensive: Theme is Summer & Winter. The class is limited to 20 people. You will need to warp your loom with approx. 4 yards of material. You will also need to provide your draft by the January meeting. Chairmen Lynn Ruggles will help you pick a pattern, if needed.

Study Group: The group was reminded of the various study groups and time and dates of their meetings. Please refer to their schedule listed on the Web in the Newsletter.

Lynn Ruggles reported that there is now a Web site set up for Judith McKensie, to help raise funds to replace her workshop and equipment after the fire. If you are interested then Lynn can give you the Link.

Mitzi Meyers is going to have her annual spin from 10 am to 3 pm on New Year's Day.

UFO': Emma Smith finished her clothes line crochet basket and Lynn Ruggles finished a sweater. Janet Stanger present 4 projects she needs to finish 1 afghan and 3 cross stitch projects

Gold Bag was won by Cynthia Newman.

Meeting adjourned for Christmas Mystery Exchange and pot luck.

❖ Respectfully Submitted, Janet Stanger, Secretary

Officers and Chairs

President: Mitzi Meyers 340-9775

Vice-presidents: Mary Berent 939-8906

Rena Lute 891-2111

Secretary: Janet Stanger 377-0746

Treasurer: Melanie Smith 385-0085 or cell 608-0101

Membership Officer: Irene Chandler 318-8182

Librarian: Judy Tallent 208-615-1857

Web Master: Vila Cox 323-7736

Newsletter Editor: Rebecca Winter 859-2822

Sample Exchange: Al Hayden 343-7300

Spinning Study Group: Lynn Ruggles 375-9172

Weaving Intensive Study Group: Lynn Ruggles
375-9172

COE Study Group: Mary Berent 939-8906

Day Weaving Study Group: Rebecca Winter
859-2822

Beginning Weaving Study Group: Anne Oglevie
208-994-2725

Bobbin Lace Study Group: Vila Cox 323-7736

From Sheep to Garment: Melanie Smith 385-0085 or
cell 608-0101

Knitting Study Group: Melanie Smith 385-0085 or
cell 608-0101

Website

<http://www.handweavers-guild-boise.org>

Note: This Newsletter is located online at this address.



Mary Berent Supplementary Warp Workshop

a Weaving workshop sponsored by the Handweavers Guild of Boise Valley
Saturday, April 27; Sunday, April 28; and Monday, April 29, 2013

Mark your calendars for three days of fast paced weaving, fun and learning! This workshop will get you thinking about what you can do with your loom in a whole new way.

Supplementary warp, or supplemental warp is a technique that opens a world of fabulous design possibilities. It allows the weaver to plan complex patterns that can be woven with 8 or fewer shafts and with only one shuttle. It allows for various tensions within the same warp, allowing some very interesting effects. Once weavers allow themselves to think differently about warp tension, the design possibilities are limitless. Many designs that LOOK complex are explained and turned weaves are explored. This is a round-robin workshop using 4 and 8 shaft looms.

The workshop will be held at the Caldwell Public Library Community Room. You will need to bring a loom warped according to instructions, weft yarn for that loom, shuttle(s) for that loom, basic weaving equipment (threading hook, scissors, tapestry needle, paper and pencil for note taking, masking tape, etc.) and your lunch each day. The cost of the workshop is \$95 for members of the Handweavers Guild of BoiseValley, with an additional materials fee of \$20 for a total of \$115 for the three day workshop. The total fee for non-Guild members is \$140 and includes membership in the Guild. This will be three fantastic days of weaving fun!

Name _____ email address _____

Phone _____ cell phone _____

To register send a check for the full amount to: Rena Lute, 2273 W Burns Street, Eagle, Idaho 83616, cell 891-2111.



Lynn Ruggles Wheel of Color

a Spinning workshop sponsored by the Handweavers Guild of Boise Valley
Saturday, February 23; Sunday, February 24; and Monday, February 25, 2013

This will be a wonderful workshop exploring spinning in color, from color theory to color reality!

Beginning with three colors of fiber, you will blend and spin colors to create your own fiber color wheel. Along the way, you will learn how to use a color wheel to choose colors and look at what happens when the “color wheel rules” are broken. You will learn how colors interact and how to combine them for the most subdued or eye-catching vibrant effects. You will learn different spinning techniques and different types of yarn which will enhance the colors in the fiber and look at various ways to ply depending on what color effect you wish to achieve. Multi-dyed rovings will also be examined for their characteristics. Are the colors sharp and well defined? Do the colors bleed into each other? You will learn how to make the most out of each different color-way and you will spin, blend and ply them using a variety of techniques that will enhance the color rather than dull it.

The workshop will be held at the Caldwell Public Library Community Room. You will need to bring a working spinning wheel with a medium size whorl, at least 2 extra bobbins, lazy kate, handcards (regular, not cotton), plus basic spinning supplies (small niddy-noddy, extra drive band, oil bottle, etc.) and your lunch each day. The cost of the workshop is \$95 for members of the Handweavers Guild of BoiseValley, with an additional materials fee of \$35 for a total of \$130 for the three day workshop. The total fee for non-Guild members is \$155 and includes membership in the Guild. This will be three fantastic days of fiber fun!

Name _____ email address _____

Phone _____ cell phone _____

To register send a check for the full amount to: Mary Berent, 769 N Grey Pebble Way, Eagle, Idaho 83616.
Phone 939-8906.



Connecting Threads
PO Box 6258
Boise ID 83707

The monthly newsletter from the



handweavers guild of boise valley, inc.

[Newsletter Highlights and Please Remembers:](#)

[January Program: Summer & Winter](#)

[Sign up for the Workshops and the Weaving Intensive](#)

