

Connecting Threads

Handweavers Guild of Boise Valley
January - 2015



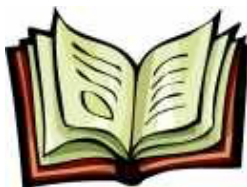
January Program

Weird Fibers, by Lynn Ruggles - In this program we will look at some unusual fibers that can be used for spinning, weaving or felting. Some are fibers that you encounter every day, but perhaps don't know much about, others are more exotic, and some allow you to connect with galactic space exploration in a personal way. With that introduction, you certainly wouldn't want to miss this program.

◆ Kathy Shiflett, Vice President

Calendar of Events

- January 3, 2015 - Guild Meeting
11:30 am - Business Meeting
12:30 am - Program - **Weird Fibers**, by Lynn Ruggles
Rebecca's Studio House, 1012 E. Third St., Meridian
- January 8, 2015, 2015 - Spinning Study Group
6:30 pm - 8:30 pm
Maralyn Larson's Clubhouse
- January 13, 2015 - Bobbin Lace Study Group
6:30 pm - 8:30 pm
Rebecca's Studio House
- January, 2015 - Day Weaving Study Group
We will continue our study in **February**
Due to the Intensive
- February 7, 2015 - COE Study Group
10:00 to 11:00 am
Rebecca's Studio House, 1012 E. Third St., Meridian
- January 17, 18, & 19, 2015 - Weaving Intensive
Twill and Twill Derivatives
- March 28-30, 2015 - Designing Full Circle
A Weaving Workshop by Mary Berent
- April 24, 25, 26, 2015 - A Spinning Workshop, Spinning
Fibers of the Scottish and Yorkshire Wool Trade: Wool,
Mohair, Cashmere and Alpaca
by Carol Rhoades of Madison Wisconsin



December Meeting and Exchange

A special thank you to Penny Schraufnagel for hosting the December Guild Meeting and Holiday Potluck Luncheon. Penny, your beautiful home, and all that you did to make the luncheon a real treat made a perfect start to the holiday season. It was a great opportunity for members and friends to meet together to share ideals and talents.

Plus, we shared a great Fiber Exchange. Below are the results of the Exchange.

◆ Kathy Shiflet, Vice President



UFO Program (Un-Finished Object)

- ☞ Dig out those un-finished projects that are taking up needed space.
- ☞ Same Rules
- ◆ Bring the unfinished object to a regular meeting and give a short explanation.
- ◆ Fill out a short form registering your intentions.
- ◆ Then bring the finished thing-of-beauty to a regular meeting.
- ◆ And collect your rewards.
- ◆ Kathy Shiflet, Vice President



Membership

Dear Members,

Thank you for sending in your dues so promptly this year. If you still need to do that, my address is 2118 Belle Aire Dr., Nampa, Id. 83686. Just \$25 brings a lot of information, fun and friends. Recently, I've been looking through my notebooks from some of our previous Intensives, on Doubleweave, Overshot, and Color Harmonies, and what a treasury of ideas for more things to weave! Hope to see you at our Intensive on Twills in January.

◆ Irene, Membership Officer

From Your President: Woven Together

We are in the Holiday Season and I wish you all a great Holiday and may your spinning wheels and looms get lots of use! May the New Year be everything you wish for.

I am heading off to Australia in January for four weeks to visit my mother, and son. I am looking forward to being in summer, however, as I always do more weaving in winter, there is a downside!

I am looking forward to our Intensive in January before I leave.

Happy Holidays to all of you.

◆ Your President, Anne Oglevie



November Sample

Our sample this month comes from Rebecca Winter. It is a 8/2 cotton 4-harness Shadow Weave.

◆ Greta Ankeny, Sample Exchange Chair



Sample Exchange Box

Members may pull samples from the Sample Exchange Box at each regular guild meeting. And remember to check your name off the list in each file folder. If you would like to participate or have questions, contact the Sample Chairperson.

Also, remember, there are samples from last year that are available to anyone toward the back of the box.

Spinning Study Group

Because our November get together was cancelled due to weather, our January 8th Spinning Study Group topic will be the one planned for then—How to Use a McMorran Yarn Balance.

A McMorran Yarn Balance, is a great way to figure out how many yards you have in any skein of yarn. This is a great thing to learn even if you aren't a spinner. All are welcome to come. So bring your wheel, spindle or whatever you would like to work on, or just come to visit. Once again we will be meeting at Maralyn's club house. The fun starts at 6:30 pm. If you have any questions or need directions please email Melanie at yarnsntreads@aol.com

** Save the Date**

The **Garden Valley Spin** will be February 15th at the Crouch Community Center. More information and car pool detail are to come.



Study Group News

♥ Certificate of Excellence (COE) Study Group

COE Study Group will meet **February 7**, 10:00 am at Rebecca's Studio House before the regular meeting. All are welcome; for more information call Mary, 939-8906.

♥ Bobbin Lace Study Group

The Lace Study group will meet **January 13**, 6:30pm at the Studio House. If you have questions or need something from Vila, please be sure to let her know ahead of time so she is prepared. Please RSVP, and if there is not enough interest we will plan for the next month.

♥ Spinning Study Group

January 8th at Maralyn's club house. The fun starts at 6:30. This month our tip of the month will be how to use a McMorran Yarn Balance. So bring your wheel, spindle or whatever you would like to work on or just come to visit. If you have any questions or need directions please email Melanie at yarnsnthreads@aol.com

♥ Day Weaving Study Group

The Day Weavers Group will not meet this month so we may all enjoy the Weaving Intensive.



Officers and Chairs

President: Anne Oglevie 208-994-2725

Vice-presidents: Pat Ann 208-337-2126

Kathy Shiflet 208 830-9698

Secretary: Janet Stanger
377-0746

Treasurer: Melanie Smith
385-0085 or cell 608-0101

Membership Officer: Irene
Chandler 318-8182

Librarian: Judy Tallent
208-615-1857

Web Master: Vila Cox 323-7736

Newsletter Editor: Rebecca
Winter 859-2822

Sample Exchange: Greta Ankeny 318-6028

Spinning Study Group: Melanie Smith 385-0085

Weaving Intensive Study Group: Mary Berent 939-8906

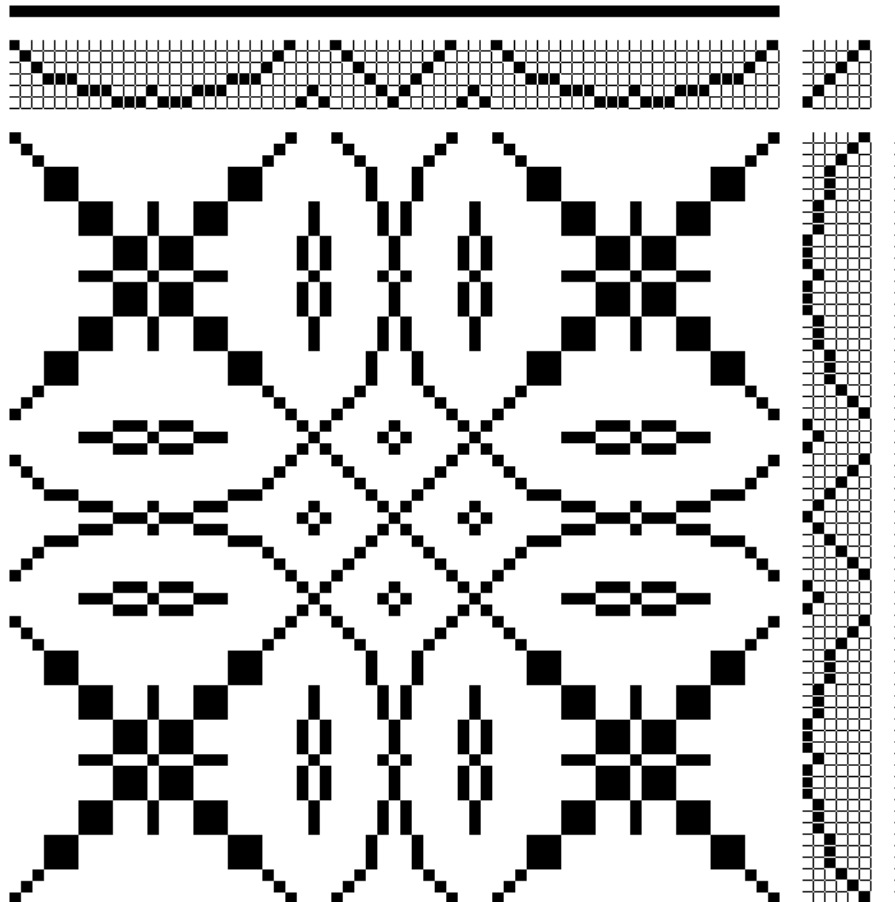
COE Study Group: Mary Berent 939-8906

Day Weaving Study Group: Anne Oglevie 208-994-2725

Bobbin Lace Study Group: Vila Cox 323-7736

Website

<http://www.handweavers-guild-boise.org>



SPINNING FIBERS OF THE SCOTTISH AND YORKSHIRE TRADE: WOOL, MOHAIR, CASHMERE AND ALPACA

HANDWEAVERS GUILD OF BOISE VALLEY

April 24, 25 & 26,
2015

9:00am - 4:00pm

Location:
Rebecca's Studio
House
1012 E. Third Street
Meridian 83642

Fee: \$160.00
Includes Materials Fee

Instructor:
Carol Rhoades

Carol Rhoades, Madison, Wisconsin, has been spinning for almost 40 years. She is most interested in primitive wools and the knitting traditions connected with them. She has researched sheep, wool and knitting traditions in the U.K. and Scandinavia. Carol has published many articles, including project designs, in *Spin-Off*, particularly for the *Fiber Basics* and *Spinning Basics* columns. Her articles about historical textile traditions and her designs have been featured in *PieceWork*, *Knitting Traditions* and *Crochet Traditions*. Carol has taught handspinning, knitting and crochet classes around the U.S., in the U.K., Scandinavia and New Zealand. In addition, she has translated numerous knitting, crochet, weaving books into English from the Swedish, Danish and Norwegian.

Scotland and Yorkshire have long been centers of the U.K.'s wool trade. Several important sheep breeds originated in those areas as did many of our favorite knitting traditions. Lately there has been a resurgence of interest in traditional wools and some exciting British wool yarns are now on the market.

Each day, we will focus on one or two wools and a luxury fiber. After a general introduction to the fiber animal and the fiber, we will experiment with various ways to prepare and spin the fibers. The day will finish with spinning to match commercial yarns and for projects typically made with the day's fibers.

Day 1: Cheviot wool and alpaca; hand carding and woolen spinning

Day 2: Wensleydale, Bluefaced Leicester and mohair; lofty worsted style spinning

Day 3: Shetland and cashmere; woolen preparation and spinning with Shetland fleece and cashmere batts; lofty worsted style spinning with commercially prepared tops

\$25.00 materials fee includes: Handout folder, washed wool fleece and commercially prepared fibers, mohair, alpaca and cashmere for spinning alone and in blends.

ADDITIONAL SPINNING WORKSHOP INFORMATION

- **SKILL LEVEL:** Basic spinning skills are required
- **CLASS TIME:** 3 Days – 6 hours class time per day -
9:00 am to 4:00 pm includes lunch break
- **CLASS SIZE:** Maximum 20 students

STUDENTS BRING:

- Spinning wheel in good working order
- Handcards for wool
- Extra bobbins, ball winder or index cards to hold singles for plying
- Notepaper and pen
- Optional, if on hand: flick carder; contrast cloth (black on one side, white on the other)

Members may reserve their place in this workshop by paying the fee of \$160.00 which includes the Materials Fee.

If a non-member wishes to be included in this workshop, they must add \$25.00 membership fee and will be a Guild member for the year and be entitled to member rates for additional events.

**Please return this form with your Workshop Fee of \$160.00 to:
Kathy Shiflet, V.P., 2564 N Waggle Place, Meridian, ID 83646
(Make checks payable to HGBV)**

Name _____
Address _____
Phone _____
E-mail _____

*We are pleased to present our own Mary Berent, Master Weaver
For the Spring, 2015 Workshop — A three day event, March 27 - 29*

DESIGNING FULL CIRCLE

This workshop will concentrate on design as an entire process; each segment of the circle contributes to a well-designed item. We will start the design process from many points in the process, but always come full circle to complete the design. The workshop will cover proportion of patterns and fibers, color theory and how working with yarn is different from mixing paint colors, how value and optical illusions can work for you, and how to effectively use interesting fabric structures. This will be a lively workshop with lots of variety and options.



Participants will bring a loom pre-warped to specific instructions. Each loom will be a different color and there will be a variety of structures to provide an opportunity for “round robin” samples experimenting with various colors, values and textures on the looms. Weave structures will also be covered and if computers can be available for those interested in learning more about computer drafting and the possibilities that opens.

This workshop is intended to be fun as well as informative! We will have three VERY full days of learning and designing, so come with all your questions and problems and we’ll have a three-day design adventure!

This workshop is intended for beginning to intermediate weavers (those who can warp the loom from written instructions and who understand basic drafting). Participants will come with looms pre-warped.

Bring: Pre-warped loom, scissors, other small loom stuff, pencil, paper, shuttles for your loom that will stay with your loom, all sorts of weft yarn for experimenting on your loom and other looms, a mug (not paper), and a cone or skein of yarn you would like to use in a design project. You may wish to bring a chair or stool for more comfortable weaving at table looms.

Optional: Bring a sewing pattern or large picture of something you would like to design fabric for or other design challenges.

Mary will provide the drafts by mail ahead for threading the looms, a notebook with about 36 pages of handouts, and a willingness to teach.

<http://www.mary-berent.com/designing-full-circle-workshop.htm>

DESIGNING FULL CIRCLE

A Workshop by Mary Berent

March 27-29, 2015

- ❖ Members may reserve their place in this workshop by paying the fee of \$120.00.
- ❖ This includes a \$ 20.00 fee for binder and handouts.
- ❖ Non-members must add \$25.00 membership fee, and you will also be a member for the year & have member rates for additional events.
- ❖ Class size will be held to 20 persons.
- ❖ You may fill out the form below and give your payment to:
 - * Pat Ann or Kathy Shiflet
 - * Contact information is in the directory.
 - * Or call 208-337-2126 for more information.



Name: _____

Address: _____

Phone & email: _____

Type of loom you will use: _____



TWILL and TWILL DERIVATIVES

HANDWEAVERS
GUILD OF BOISE
VALLEY

WEAVING
INTENSIVE

January 17, 18, & 19,
2015

9:00 am to 4:00 pm

Location to be
announced

Fee: \$30.00

Come join the fun and
leave with exciting new
ideas to spice up your
twill weaving!

SOME NECESSARY "INTENSIVE" INFORMATION:

- For the Intensive, each participant will select a twill/twill derivative of their choice. Previous to the Intensive, you will warp your loom using the chosen draft and fiber appropriate to the weave structure. Please weave the first sample for the Guild Notebook before coming to the Intensive..
 - This will be a round robin format in which each person may move from loom to loom weaving samples as they wish, offering the opportunity to weave some of those twill drafts you have been wanting and wishing to try. Fun fiber combinations of color and texture will be provided for all to weave their samples.
 - A finished sample size of 6-8" square is recommended.
 - All participants will meet as a group at the beginning of the Intensive and have the opportunity to explain their project and provide information that may be helpful in understanding their loom and sample.
 - During the Intensive, there will be opportunities to discuss the topic and share information, special hints and helps, additional information about the weave structures chosen and other valuable insights as appropriate.
 - The Intensive is open to members of the guild. If a nonmember wishes to be included, we ask that they join the guild.
- BY DECEMBER 1, 2014
- Provide a draft and other notes on your chosen sample to the Intensive coordinator (PDF or Word format preferred, paper copies accepted as well). A notebook containing all the drafts will be prepared for each person so that everyone has this available during the workshop.

LOCATION ANNOUNCED

Rebecca's Studio House, 1012 East Third Street, Meridian 83642



Reserve your place in the Intensive by making your payment by
November 15, 2014.

(We need to know how many to plan for, so early reservations are helpful.)
Cancellations made by January 1st will receive a full refund.

Return this form with your Intensive \$30.00 fee to:
Kathy Shiflet, Vice Pres., 2564 N. Waggle Place, Meridian, ID 83646
(Checks made out to HGBV)

Name _____

Address _____

Phone _____

E-mail _____

Loom to be used – Brand, Floor or Table Loom, Number of Harnesses, Weave
Structure you plan to use.

Connecting Threads
PO Box 6258
Boise ID 83707

The monthly newsletter from the



handweavers guild of boise valley, inc.



May we all write whatever new chapter we are needing in the coming year.