

# Connecting Threads

handweavers guild of boise valley

January, 2018



## January Program: Mary Meigs Atwater, A Most Interesting Person!

Master Weaver, Mary Berent, will give the presentation for our program this month. This presentation will focus on the life, publications and influence of Mary Meigs Atwater on our weaving today. She lived from 1878 until 1956, and had an unusual and very interesting life during a time of rapid change within the world around her. In addition to being a self-taught weaver and published writer on weaving topics, she studied art, traveled, and raised beavers. The program will include a discussion on the opinions of guild members on what impact Mary Meigs Atwater might have had on modern day weaving. ♦ Melanie Smith, Vice-President

## Calendar of Events

January 6, 2018 - Board Meeting

10:00 a.m.

At the Church prior to the Regular Meeting

January 6, 2018 - Regular Guild Meeting

11:30 a.m. - Business Meeting

12:30 pm.-Program: **Mary Meigs Atwater**, by Mary Berent

At the First Congregational Church of Christ,  
2201 Woodlawn, Boise, in the Banquet Room

### **Study Groups:**

January 3 & 17, 2018 - Knit and Crochet Group

1:00 p.m. - 3:00 p.m.

Aero Cafe

January 13, 2018 - Spinning Study Group

10:00 a.m. - 12:00 noon

Penny Schraufnagel's Home

January 9, 2018 - Bobbin Lace Group

10:00 a.m. - 12:00 noon

Vila Cox's Home

January 16, 2018 - Day Weaving Study Group

12:30 p.m.

Vila Cox's Home

January 13-15, 2018 - Weaving Intensive - Topic: Circles

At Stevens-Henager College, Nampa

See the flier later in this Newsletter

January 25, 2018 - Rug Punch and Punch Needle Meeting

1:00 p.m. - 4:00 p.m.

Jinks Hunter's

February 3, 2018 - COE Study Group

10:00 a.m. - Before the Regular Meeting,

At the Church

### **Other Event:**

January 1, 2018 - Mitzi's Spinning Day

11:00 a.m. - 4:00 p.m.

See the note on page 2.

## ~ Last Chance ~

### 2018 Weaving Intensive

Sign up Now

The Topic is "Circles"

This is the final call for signups for the Circles Intensive this year. If you would like to join in on the weaving fun, please plan to bring your filled out form (see page 6), your money, and a hard copy of your draft and weaving information, to the guild meeting. If you have any questions just let me know, at [yarnsnthreads@aol.com](mailto:yarnsnthreads@aol.com)

♦ Melanie Smith, Study Group Chair

## Policy Updates

The Guild has several documents in place which help us organize and keep things moving smoothly. The first is the document called By-Laws. This is required because our group is incorporated by the state. The information here is fairly general and is a starting place for determining the roles of the officers, how committees are formed, etc. The By-Laws are a challenge to change, as they require a certain majority of votes, revising with the state, etc. As a result, they stay in place and are good.

Our other documents include the Job Descriptions and the Policies. These are more specific and merely provide helpful information about how things have worked well in the past. When these documents were first developed, the goal was to document the working processes, so they did not get lost in the shuffle. They provide a

starting place for new Officers and Chairs. These can be revised or adjusted at our will. If we find a better way of working, we want to preserve it in these documents.

The last time we took a look at our revisable documents was in 2012. The Board felt it may be time to compare these to how things are being done now, and revise as needed.

At the December meeting I passed out Job Descriptions and Policies to some of our leaders so they could have a look. If you received them, please take the time over the holiday break to have a look and revise as needed. Then **bring your revisions to the January meeting**. Thank you very much for your efforts in this project.

By the way, all of the current documents are posted on the website under Policies. Any member may go there to have a look, as well.

❖ Rebecca Winter, Historian

### From Your President

Recently I had to take my car to our mechanic for some maintenance work. The shop where we take it is in Boise. I live south of Nampa so this means I spend my day in Boise usually with no car just my walking shoes. I always take reading material and spend a good deal of time in a nearby coffee shop. This time I had just received the new issue of *Handwoven* magazine so it went in my bag of reading materials. As I read through the magazine I came to Tom Knisely's "Notes from the Fell." His article was musing about his library of fiber craft books. What if he had an emergency and had to leave and possibly lost his home and belongings? Which belongings would he grab to take with him? Of his extensive library, which books would he gather to take?

That is the spring board for this article. I began to think of my meager library of fiber arts books, most of them helping me learn about weaving. Which books do I use the most? How do I use my books? A book I immediately thought about was *Learning to Weave* by Deborah Chandler. When I have a question about what I am doing as I weave I first check with this book to see if there is an answer in it. Then I thought about the books I use for ideas and challenges. The books that came to mind are *1000(+)* *Patterns in Shadow Weave* by Marian Powell, *A Handweaver's Pattern Book* and *A Handweaver's Source Book* both by Marguerite Porter Davison. Another resource book I look through is *A Weaver's Book of 8-shaft Patterns*, which was published from the Friends of *Handwoven* magazine, edited by Carol

Stickler. I also go back to past *Handwoven* magazines for ideas.

Books I have gotten from the Guild Library have helped me learn and improve. So with this article I would challenge you to study your favorite fiber craft. If your library is as meager as mine our Guild Library is the perfect resource. Check with our librarian or other experienced guild members who might help you find the book that will start your creativity rolling and see what you can create. Then be sure you bring your creations to the Guild meetings to help inspire the rest of us.

Be ready at the January meeting to tell us your favorite go-to book that helps you with your fiber craft. Merry Christmas,

❖ Greta Ankeny, President

### Mitzi's New Year's Spinning Day Gathering

Spinning on New Year's Day from 11 to 4 at my new location, 2580 North Maple Grove Road between Ustick and Northview. Please squeeze your car in, carpool, or there is some parking across the street at apartments. Bring something to work on and a food to share or just drop in for a quick visit. Start the new year doing what you love!

❖ Mitzi 208-340-9775

### December Mug Rug Exchange

Thank you everyone to brought some really wonderfully made mug rugs. They were all a great display of just some of the awesome talent in our group.



❖ Melanie Smith, Vice-President

## Equipment Rental

Please remember, if you have rented Guild Equipment, it is due to be returned the following month. If you would like to keep it for another month, contact Vila. If no one is waiting to rent the equipment, you may make arrangements for renting an additional month.

- ◆ Vila Cox, Equipment Chair

## Membership News: December Mystery Member

Who Is This Mystery Member?

This month's clues are:

1. Born in the Cow-Chip-Throwing town.
2. At one time had 9 cats.
3. Have a niece named Bambi.

The first person to notify the newsletter editor correctly will have bragging rights for the January Mystery Member, whose identity will be published in the next Newsletter.

Last month's Mystery Member was Anna Niebrugge. Here are the clues which were given:

1. Trained to play the bag pipes as a child.
2. Earned an MFA at Southern Illinois.
3. When not playing with fiber, loves to rock climb and mountain bike.

No one guessed correctly this month. However, we now know a little more about Anna.

- ◆ Rebecca Winter, Newsletter Editor

## Advertisement

FOR SALE

SCHACHT'S 26" MAPLE BABY WOLF  
LOOM

Equipped as follows:

8 Harness, 10 Treadles

2- Stainless Steel Reeds - 10D and 12D

High Castle

Baby Wolf Stroller

Baby Wolf Trap

~~~~~  
14 Yard Warping Board with 2 boards to  
hold the Warping Board at the proper height  
while winding the Warp.

GREAT LOOM WITH GREAT PRICE,  
CALL FOR MORE INFORMATION!

Kathy Shiflet, 208 830-9698

E-mail: [shiflettwo@msn.com](mailto:shiflettwo@msn.com)

## Study Group News

### Day Weaving Study Group

The day weaving study group will be meeting on Tuesday, January 16, 2018, at the home of Vila Cox at 12:30 pm.

At the December meeting it was decided that we will not select a new topic of study until after March, which is the deadline for the Hargrove Samples. We enjoyed an informal group, discussing each of our current projects.

Please know all are welcome to join this group.

- ◆ Rebecca Winter, reporting for Anne Oglevie,  
Study Group Chair

### Spinning Study Group

Now that the holiday season is once again behind us, we can take some much needed time for ourselves. So why not join us for spinning on January 13<sup>th</sup> at Penny's home from 10 am until 12. Please bring whatever you would like to spin or work on. Also, if you received a fun fibery gift this season, why not bring it to show? If you have any questions or if you need directions just let me know.

[Melanie yansnthreads@aol.com](mailto:Melanie.yansnthreads@aol.com)

- ◆ Melanie Smith, Study Group Chair

### The Rug Punch - Punch Needle Group

The January Rug Punch-Punch Needle Meeting will be at Jinks Hunter's house. The meeting will be January 25 from 1 to 4 p.m. If you have questions, please feel free to call me at 208-466-1240.

- ◆ Pat Day Hartwell, Study Group Chair

### Certificate of Excellence Study Group

The next meeting of the COE Study Group will meet on February 3 at 10:00 am at the Church before the regular meeting. If you have ever thought of earning your Certificate of Excellence, this group can offer support and encouragement. All are welcome; for more information call Mary, 939-8906.

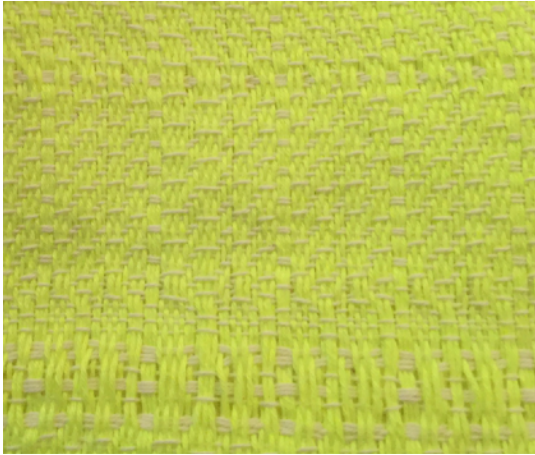
- ◆ Mary Berent, Study Group Chair



## Sample Exchange News

This month's sample is from Lily Lee, with a warp of tea bag string and weft of bag closing thread. Lily designed this pattern in Fiberworks Bronze.

❖ Jinks Hunter, Sample Chair



### **Sample Exchange Box**

Members may pull samples from the Sample Exchange Box at each regular guild meeting. And remember to check your name off the list in each file folder. If you would like to participate or have questions, contact the Sample Chairperson. Also, remember, there are samples from last year that are available to anyone toward the back of the box.

## November Meeting Minutes

### Members Meeting

Present: Lily Lee, Kathy McGowan, Greta Ankeny, Ivy DeHart, Julie Gerrard, Jane Olsen, Tracy Redhead, Denyce Verti, Lynn Ruggles, Cynthia Newman, Jenni Jimmerson, Jinks Hunter, Melanie Smith, Vila Cox, Cindy Schafer, Penny Schraufnagel, Katzy Lühring, Mary Berent, Rebecca Winter, Esther Kleinkauf, Pat Day Hartwell

#### **Greta Ankeny, President**

As you introduce yourself, briefly answer two questions:

Do you use the giblets in your turkey?

What do you do differently from a traditional Thanksgiving meal?

#### **Melanie Smith and Penny Schraufnagel, Vice Presidents**

Stacks of handmade mug rugs have been prepared for everyone who participated in the Mug Rug Exchange.

In next month's program Mary Berent will present information about Mary Meigs Atwater.

#### **Show and Tell**

12 members had shows; no tells

Highlights: Rebecca Winter did a challenge with a "three crayon color warp." She randomly drew three crayons from a bag and ended up with copper, golden rod, and

sea green. She wove a Saori warp with the three-crayon color warp, making panels that will become book covers for her 2018 journals. Vila Cox completed a nine-foot table runner in diversified plain weave. Cynthia Newman brought back a scarf from her trip to Japan, which includes different patterns on each side and an energized weft, giving the piece a stretchy quality. Cynthia also shared a tencel scarf woven for a show with a satin block pattern. Ivy DeHart worked with Lunatic Fringe10/2 hemp warp using design principles she learned at a workshop that focused on bands. She sampled many variations with the same design and motif, producing an impressive quantity of rich samples.

#### **Fiber Arts Trivia -Secretary, Lily Lee**

Another month of Fiber Arts Trivia questionnaires were distributed to members present for this cumulative competition. Currently Lynn Ruggles is in the lead with Mary Berent and Esther Kleinkauf tied for a close second and Greta Ankeny, Julie Gerrard, Melanie Smith, Rebecca Winter and Vila Cox all tied for a close third.

#### **ANWG**

No news.

#### **Treasurer, Vila Cox**

We are on budget; we have not been spending much. An updated budget will be distributed at the January meeting.

#### **Librarian, Cindy Schafer**

When you get a reminder email about a checked out book it is merely a reminder, not a guilt trip. These reminders are meant to be a helpful courtesy.

#### **Equipment, Vila Cox**

Remember, if you have equipment checked out and you plan to keep it an additional month, make sure to let Vila know and pay for an additional month. This is only an option if there is not a wait list for the equipment you have checked out.

#### **Board Policies, Rebecca Winter**

Current Board Members and other Officers must review their job description and make revisions as needed to return to next month's meeting. Bylaws must be followed as our guild is incorporated with the State of Idaho and it is a lengthy process to change them. Policies on the other hand are simply customs or how we do things. We can change and update policies more easily. The current policies were last revised in 2012.



#### **Sample Box, Jinks Hunter**

The Sample Box is by the door. This month's sample is a plain weave with mixed hand-dyed cotton by Cynthia Newman.

#### **Newsletter Editor, Rebecca Winter**

Send in information for the newsletter.

#### **Webmaster, Vila Cox**

Email with any feedback or suggestions for the website.

## Nominations Committee

Mary Berent will be the Nominations Chair. The Nominations Committee will work to nominate next year's officers.

### Membership Chair, Rebecca Winter

*Mystery Member*

Clues:

1. Trained to play the bagpipes as a child.
2. Earned an MFA at Southern Illinois.
3. When not playing with fiber, loves to rock climb and mountain bike.

The Mystery Member is Anna Niebrugge. Nobody guessed it correctly.

### Study Groups

Day Weaving Study Group, Chair -Anne Oglevie -Meets at Rebecca's house the third Tuesday of the month in December.

COE Study Group, Chair -Mary Berent -Meets before the regular meeting every other month (next meeting February).

Spinning Study Group, Chair -Melanie Smith -Meets at Penny Schraufnagel's house on the second Saturday of the month.

Knit and Crochet Study Group, Chair -Melanie Smith - Meets at Aero Café on Orchard St. in Boise on the first and third Wednesday of the month.

Rug Punch Study Group, Chair -Pat Day Hartwell -Not meeting in December.

Bobbin Lace Study Group, Chair -Vila Cox, Study Group Chair -Meets 2nd Tuesday each month 10am at Vila Cox's house.

### Program Holiday Mug Rug Exchange, Melanie Smith

The following mug rugs were included in the exchange:

- Jenni Jimmerson -Rep Weave
- Jinks Hunter -Rug Punch
- Cindy Schafer -Rug Punch, round with handspun yarn
- Tracy Redhead - Crochet with Handspun
- Jane Olsen -Fabric motifs with buttonhole stitch
- Lynn Ruggles -Woven with different patterns using leftover materials
- Nancy Alzola -Knit and felted
- Rebecca Winter -Shadow weave with rug yarn

- Kathy Shiflet -Plain weave with variegated Peruvian cotton
  - Greta Ankeny -Felted wool with blanket stitch edging
  - Melanie Smith -Huck Lace, with miscellaneous yarn leftover on bobbins
  - Esther Kleinkauf -Woven on a pin loom, each one is unique
  - Phyllis -Felted Circles
- ♦ Respectfully submitted, Lily Lee, Secretary



## Officers and Chairs

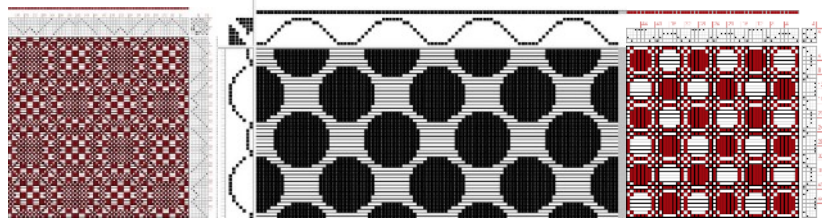
- President: Greta Ankeny 208-318-6028
- Vice-presidents: Melanie Smith 208-385-0085 & Penny Schraufnagel 208-208-342-1288
- Secretary: Lily Martina Lee 208-922-8612
- Treasurer: Vila Cox 208-323-7736
- Membership Officer: Rebecca Winter 208-859-2822
- Librarians: Cindy Schafer 208-375-6736 & Joan Sheehan 208-794-6049
- Web Master: Vila Cox 208-323-7736
- Newsletter Editor: Rebecca Winter 208-859-2822
- Sample Exchange: Jinks Hunter 208-867-2953
- Equipment: Vila Cox 208-323-7736
- Events Coordinator: Janet Stanger 208-377-0746
- Spinning Study Group: Melanie Smith 208-385-0085
- Weaving Intensive: Melanie Smith 208-385-0085
- Day Weaving Study Group: Anne Oglevie 208-994-2725
- COE Study Group: Mary Berent 208-939-8906
- Bobbin Lace Study Group: Vila Cox 208-323-7736
- Rug & Needle Punch Meeting: Pat Day Hartwell 208-459-4324

## Website

<http://www.handweavers-guild-boise.org>



# CIRCLES!



handweavers guild of boise valley

## 2018 Weaving Intensive

January 13-15 - 10 am to 4 pm - Cost a mere \$25.00

At Stevens-Henager College, 16819 N Marketplace Blvd, Nampa, ID 83687

Come and join the fun.

### *What is the Intensive Study Group?*

- The Intensive is a “teacher-less” workshop. We will each share in leading the group.
- At the beginning of the three-day session, each person will describe what they have put on their loom.
- Then everyone will have an opportunity to weave a sample from each loom, in a round robin format.
- Everyone is there to learn and help others by sharing what they have learned.

### *Before the Intensive --*

- Select a draft with some manner of circles in the design.
- Do some research on the topic you have chosen so you can explain the theory and the draft you have prepared, and be able to tell others what they need to know to weave their sample.
- Make notes of what you learned during your research.

### *What is needed --*

- A loom warped and ready to go. The weaver may choose any yarn that would be appropriate to the weave draft.
- Plan for a sample large enough to show the weave, at least 4 to 8 inches square.
- A warp length of 4 to 5 yards is suggested.
- A weaving draft and information about the Circle design selected.
- Shuttles and weft yarn to be left at the loom for others to use when weaving their samples.
- A short handout would be nice for everyone to include in their notebook.

### *Drafts are due ahead of time --*

- Printable draft sheets need to be turned in by January 6, 2017, so that copies can be made and notebooks prepared.
- Each participant will receive a notebook containing all the drafts, handouts, and sheet protectors to put their completed samples in.

### *You will also want to bring --*

- Your favorite way of identifying your samples, such as tags or masking tape.
- A thick waste yarn to weave in between samples to separate them. If you choose a distinctive yarn, then it will be easier to distinguish who the sample belongs to at the end.
- Scissors, notepaper, pen, needles, weights, post-it notes, or other items in your weaving toolkit.
- Feel free to bring extra yarn for weft if you would like to experiment with something different as you weave some samples.

### *Other details --*

- The Intensive is open to Guild members. If a non-member wishes to attend, we invite them to join the Guild.
- Email or give your drafts, notes, or handouts to Melanie Smith by January 6, so that she will have time to get the notebooks assembled. If emailing, send a .pdf or Word .doc.
- Mentors are available, if you need assistance. Please ask.
- Please fill out the form below, and turn in your fee to hold your place in the Intensive.

---

Name \_\_\_\_\_ Email \_\_\_\_\_

Type of loom \_\_\_\_\_ Number of Harnesses \_\_\_\_\_

\*If you would like to attend the intensive, but don't have a loom there are looms in the guild that can be borrowed, just let Melanie know. [yarnsthreads@aol.com](mailto:yarnsthreads@aol.com) or 208-608-0101