

Connecting Threads

Handweavers Guild of Boise Valley
January, 2022

🌿 🌿 Come in Person to the Meeting 🌿 🌿

January 8, 2022

The meeting will be held at the
First Congregational Church of Christ,
2201 Woodlawn, Boise, in the Banquet Room.

Regular Meeting at 11:00 a.m.

Or Join the Meeting via Zoom at this link:

[https://us02web.zoom.us/j/84383254458?
pwd=WjJ5RkxwM2Z3L3R5L09KeE9vMC84QT09](https://us02web.zoom.us/j/84383254458?pwd=WjJ5RkxwM2Z3L3R5L09KeE9vMC84QT09)

Meeting ID: 843 8325 4458

Passcode: Firstof22



~ January Program: Favorite Fiber Books ~ A Review ~

The January program will consist of 5 of our members giving a review of one of their favorite fiber books. Each participant will speak for approximately 10 minutes about what they like about this book and why they recommend it. I'm looking forward to hearing about these treasures. Come to the meeting with a notebook and pen so you can take notes and ask questions!

◆ Connie Griffin, Vice President



Calendar of Events

January 8, 2022~

11:00 a.m. - **Favorite Fiber Books - A Review**
At the First Congregational Church of Christ,
2201 Woodlawn, Boise, in the Banquet Room

Study Groups:

January 11, 2022 ~ Bobbin Lace
10:00 a.m. ~ At Vila Cox's home

Day Weaving Study Group

Because of the Weaving Intensive, there will be no separate meeting for Day Weaving in January.

Thursday Fiber Friends Zoom

Every Thursday ~ 2:00 p.m.

Spinning Study Group ~ TBD

March 29, 2022 ~ Garment Study Group
10:30 a.m.

Special Events:

January 15, 16, & 17, 2022 ~ Weaving Intensive Study Group ~ Twill

April 8, 9 & 10, 2022 ~ Color Compositions Workshop, by Cynthia Newman

May, 2022 ~ Understanding Twist Workshop, by Lynn Ruggles

Find further information about these 3 events later in this Newsletter.



2022 Weaving Intensive ~ Sign up Now

The topic of the Intensive this year is "Twill." This is something one could study for the rest of one's weaving life and still have things to learn. Remember this is a study group, and studying is the main purpose. So hit the books now to find that one twill you would like to know more about. Find the flier with the details later in this Newsletter. There is still time to sign up. Contact us for information.

◆ Rebecca Winter, Intensive Study Group Co-Chair



Upcoming Workshops

While we still have not finalized locations for either the Cynthia Newman workshop, Color in Composition (April 8, 9 & 10) or Lynn Ruggles workshop, Understanding Twist (May 13, 14 & 15), we have established prices for both workshops. The cost for Color in Composition will be \$125 for the three days and includes the material fee. The cost for Understanding Twist, also 3 days will be \$135, which also includes material fees. Both of these instructors have been very generous to Handweavers Guild of Boise Valley in their fees which allows us to offer these talented teachers for a very affordable cost. Thanks to both of them!

◆ Mary Berent, Vice President

From Your President

Your Board has nearly completed recent work on what we call Policies and Job Descriptions. Allow me to preface my explanation with the purpose of these documents. Our official legal document required by the State for our 501(c)(7) incorporation is the Bylaws. These are remaining unchanged at this time, as they are a challenge to change, because there is a long step-by-step process required.

The Policies and Job Descriptions, on the other hand, are merely nice to have as a record of what works well in the Guild. These outline how things have been done historically, and gives leadership, especially, an outline of specific duties. Policies and job descriptions can be updated and changed at any time, as we find better or varied ways of doing the work of the Guild.

This current process of updates began with the need to create parameters for how we manage the Pat Ann Education Fund. Of course, as anyone who has ever worked with policies knows, when you create a new policy there are details that ripple into other policies.

This was also an opportunity to take a look at all the policies and job descriptions to see where updates were needed. As a matter of fact, I had been compiling a list of changes needed as members or officers mentioned them over the past couple of years.

The Board met last Saturday, December 18, to review and accept the changes, which was completed. The **updated policies and job descriptions** have been sent to the webmaster. I will let you know when they have been added to the website. **Please review** them, because I will be asking for approval from the membership on January 8. Posting them there gives you the best opportunity to have a look.

I like to keep track of numbers. The following is a list of work completed:

- ★ 7 Policies were updated
- ★ 3 new Policies were created
- ★ All 16 previous Job Descriptions were updated
- ★ 3 new Job Descriptions were created

Thank you to everyone who had a hand in this work. It offers great benefit to the Guild and to those who wonder how to get guild programs and activities going with fiber and yarn.

◆ Rebecca Winter, President

Sample Exchange

The handwoven sample for January is from Katzy Luhring. The towels were woven with 10/2 unmercerized American Maid Cotton. The warp is natural white and the weft is dark brown and light brown. It is crepe weave, found on handweaving.net, #63114 by Alice Schlein from *A Crepe Is Not Just a Pancake*, digital monograph, 2012, <https://weaverly.typepad.com/weaverly/2012/04/announcing-new-monograph-a-crepe-is-not-just-a-pancake.html>

◆ Julie Gerrard, Sample Chair



December Program ~ Thank You

We want to thank Vila Cox for putting together all the wonderful drafts from her Challenge. What a great collection of weaving on the same warp and threading! Thank you Vila for organizing all this in such an accessible way. I know we will be seeing some fabric coming out of this in the coming months.

- ◆ Mary Berent, Vice President



Day Weaving Study Group

The Day Weaving Study Group will not meet in January, because of the Weaving Intensive. We will resume meeting in February. Look for the details in the next Newsletter.

- ◆ Greta Ankeny, Study Group Chair

Garment Study Group

Garment Study group will be meeting next on March 29, 2022, at, 10:30. Consider attending if you have created a garment, want help planning a garment from your handwoven fabric, or merely have an interest in creating garments. This group will provide support and encouragement to help you along your way.

- ◆ Greta Ankeny, Study Group Chair

Thursday Fiber Friends Zoom

We would like to extend an invite for you to zoom-in and join us. We started meeting weekly via zoom when we were all mostly staying home during the worst of covid prior to vaccines. It is a great way to just hang out at home, show each other what we are working on, ask about project issues, inspire, encourage, and laugh. Hope you'll join every Thursday at 2:00 pm. Find us on zoom at:

<https://us02web.zoom.us/j/84563744178?pwd=WVl4WWNGRmJmd3A1KzlzaUtEaUtTZz09>

- ◆ Jinks Hunter, Study Group Chair

Bobbin Lace Study Group

The Bobbin Lace group will meet January 11th at 10am. The location to be decided and I'll send that out via groups.io before the meeting.

- ◆ Vila Cox, Study Group Chair



2022 Weaving Intensive Study Group

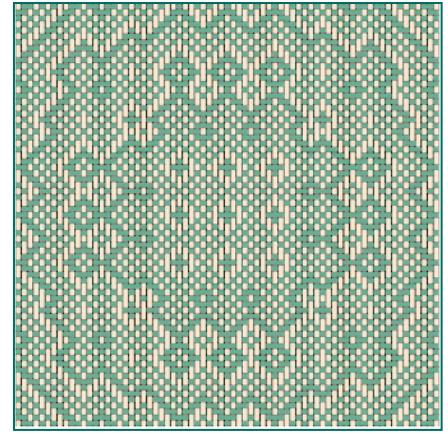
Handweavers Guild of Boise Valley

Twill

A Weaving Retreat, with Weaving Presented by Each Participant
Saturday, Sunday, and Monday ~ January 15, 16 & 17, 2022
9 AM to 5 PM ~ Location ~ the Bowmont Community Center
Fee - \$20.00

With support from the Pat Ann Education Fund in the form of used Binders and Page Protectors.

- It's time to start thinking about the Weaving Intensive! Choose a favorite Twill Weave - one you have been wanting to study, and come share it with the group. Join us for learning and fun!
- This will be our usual "teacherless" workshop. We each have the opportunity to be the expert in our chosen area of study. There are mentors available if you need some help or direction. Please ask.
- For this workshop each participant will warp their loom using their chosen twill draft. This will then be a round robin type of workshop, in which each person moves from loom to loom weaving samples as they wish.
- The weaver may also choose any yarn that would be appropriate for the draft. The weaver will also provide all the materials needed to weave samples on their loom. Calculate your warp length by the number of possible samples needed. Generally, if you are planning 4 to 6-inch samples, 4 to 5 yards would suffice. Warp width would also be best at about 6 inches, or a width needed to show your design.
- At the beginning of the workshop, the weaver will present their Twill to the group, and give instructions for weaving. Plan for the presentations to be approximately 8 to 10 minutes. Include an explanation of the weave structure, the reason for your choice of yarn, tips and techniques, why you chose this particular draft, and any quirks or preferences for your loom.
- Also, you may wish to plan to weave your own sample ahead of time so you can teach us from experience how this sample works. Another possibility would be to cut your sample from the loom and retie. This would give the opportunity to show finishing methods applicable to the sample.
- We recognize, and also value, the camaraderie and social aspect of the Intensive. We envision this opportunity to have great potential for experimentation and learning. Just think of the benefit of three days of discussion and exploration with others of like mind.
- Printable project plans and draft sheets (electronic or hard copy) will be submitted no later than January 4, 2022. Each participant will receive a binder containing all of the plan sheets and drafts. **Please include all information required for reproducing this cloth.** This includes 5 things - threading, tie-up, treadling, yarn and sett. We need more than just a .wif file. Additional notes about what you learned are also wonderful to have. There are Weaving Record Sheets available in the Library and on the Guild website [HERE](#).



Some necessary workshop information:

- ★ Each participant will bring a previously warped loom to the workshop.
- ★ Each loom will be warped using a twill draft of the weaver's choice.
- ★ Participants will provide their own warp and weft materials to be used on their loom.
- ★ Mentors are available. Please ask, if you would like to discuss your ideas.
- ★ Send your Instructions and draft in printable form to Rebecca by January 4, 2022. This is a final deadline.
- ★ The workshop is open to members of the guild. If a non-member wishes to attend the Intensive, we invite them to first join the guild.
- ★ There are a couple of Guild looms available, if you need one. We do not charge rent if you are using these for Guild sponsored Workshops or Intensives.
- ★ Keep this information available, as it is the only pre-workshop information you will receive.
- ★ Your payment of the fee is your confirmation for participation in this event.
- ★ The Guild will accept cancellations with a refund through January 4, 2021. After that date cancellations will be considered on an individual basis.

Return the following with your fee to Connie Griffin or Rebecca Winter.

Name _____ Address _____

Phone _____ email _____

Fee amount included \$ _____



Color in Composition - Weaving Workshop with Cynthia Newman

Color in Composition is a 3-day round-robin style workshop focusing on thinking creatively about our use of color. Using block designs, we will explore how block size and proportion along with color selection work together to create the mood of the cloth from energizing to calm. We will discuss thinking intuitively about color using all of our senses and understanding color theory as a reference tool. While maintaining our personal preferences for color, we will learn how to create depth and balance in our handwoven cloth.

4 and 8 shaft designs will be provided which address design considerations, including proportion, symmetry and asymmetry. Beginning with warp stripes in different color combinations and stripe proportions, students will apply weft color and treadling variations to the blocks and observe the interaction.

This workshop is designed for beginning and intermediate weavers. Turned twill blocks (8-shaft) and summer & winter blocks (4-shaft to 8-shaft) will be used. Students will warp their loom with 10/2, 8/2 cotton, or 8/2 Tencel. A large selection of colors wound on bobbins will be available for the students to use and explore. The Instruction will include PowerPoint illustrations along with fabric samples which will be outlined in the workshop notebook.

The workshop will be held Friday April 8, Saturday April 9 and Sunday April 10, 2022. Workshop costs and location have not yet been determined.



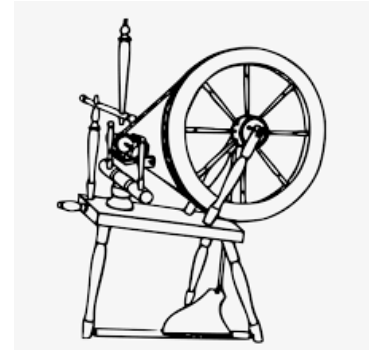
May, 2022 ~ 3 Day Spinning Workshop ~ Understanding Twist

Instructor: Lynn Ruggles

Dates and Location TBD

Ignoring color changes, the name of the sheep who grew the fleece, or whether it is natural color or dyed, do you always spin the same yarn? Do you adjust your spinning to get the yarn you really want, whether thicker, thinner, smoother, lumpier; or have you decided to stick with your tried and true old faithful yarn default? You can spin other yarns, and this class will show you how to adjust your spinning to match what you want.

As spinners, we all know that twist holds fibers together to create yarn. But, how much twist do you need? There are many different fibers from all the various breeds of animals, such as sheep, goats, camels, and alpacas, as well as insects, and natural and manufactured fibers from plants. In this class, we will play with fibers as we talk about twist. You will learn how to set up your wheel for the yarn you'd like rather than the yarn you always spin, how to calculate spinning ratios, how to spin a consistent yarn, and ways to combine unlike fibers. We will work with a variety of fleeces and fibers in various combinations to create our own repertoire of plain and fancy yarns.



Meeting Minutes for December 4, 2021

The meeting was called to order by president Rebecca Winter.

Members present: President Rebecca Winter, vice-presidents Mary Berent and Connie Griffin, treasurer Mitzi Meyers, secretary and librarian Sally Johnston, membership officer Dagmar Rapp, past year president Doug Ranck, Janet Stanger, Kari Lawton, Anne Oglevie, Raelene Viste, Katzy Luhning, Irene Chandler, Jean Zaske, Brenda Hatch, Chris Brady, Ester Kleinkauf, Julie Gerrard, Jamie Landry, Cheryl Wurtenberger, Barbara Redmond, Tera Jones, Kelly Sandusky, Vila Cox, Katie Janiak, Lori Porreca, and Carolyn Swenson.

The guild meeting began with welcome and introductions of members, new members and visitors.

Business:

Rebecca reported that because we are an incorporated non-profit organization we have legal obligations in the form of Bylaws. We also have written policies, job descriptions, io groups and files, etc.

The Pat Ann Education Fund will need a new written policy and a report on its financial activities. Doug will take the lead on this committee. Mitzi stated that the current balance for this fund is \$6,882. There is still some yarn for sale. The remaining items will be available in our meeting room. Any items left will be placed in the library so we won't have to pay more rent for the upstairs rooms.

The Facebook page has been updated and Dyan Lay has been added as an administrator.

Vice presidents reported on upcoming events. The program for January will be on favorite fiber related books. Members interested will show, describe and share why the book chosen is so special to them. In January the weaving intensive will take place from January 15-17 at Bowmont Church on twill. Cynthia Newman will present a workshop in April from on Color Combinations. Finally, the agenda for May Lynn Ruggles will present both a program and workshop.

Dagmar Rapp reported that our membership has grown to 70+ members!

Treasures Report: We have a stable treasury.

Secretary Report: Sally asked that all present at the meetings sign the attendance sheet passed around to be sure they are included in the meeting minutes. Rebecca added that all print their names for legibility.

Julie Gerrard, as chair for the sample exchange, said she has members signed up to provide all of the samples needed for this year. She would be happy to accept some for future needs.

Dagmar handed out guild directories for those present.

Janet Stanger, as head of the outreach committee, asked for more



volunteers to present our guild and its works. She would like people for planning, mentoring demonstrating and putting up displays

Show and Tell followed with members sharing their wonderful pieces of art. It was so nice to see what our peers are working on. Vila set up and presented the results on this past years challenge on twill weaving. What a prolific and brilliant group we have amongst us.

Addendum: Members of the board had a working meeting on 12-18-21 regarding nominating committee and policies, including job descriptions.

Members present: president Rebecca Winter, past president Doug Ranck, vice presidents Mary Berent and Connie Griffin, treasurer Mitzi Meyers, secretary Sally Johnston, membership officer Dagmar Rapp and Anne Oglevie.

First on the agenda was the nominating committee for next year's officers. Julie Gerrard, Mary Berent and Mitzi Meyers will make their selections and present it to the rest of the guild in March, and the slate will be voted on in April.

The remainder of the meeting focused on Policies and Job Descriptions. The Bylaws will remain the same as they are required by the state. The language used will be updated to reflect present tense concepts and the job descriptions will explain how these concepts are to be accomplished. It was agreed that the minor edits should be kept as simple (general) as possible. Vila will post these on our website. Mitzi made a motion to accept the changes discussed during the meeting and Dagmar seconded the motion. More information will be shared with all members of the guild at our January meeting. All present voted in favor of the changes and the motion was passed.

◆ Respectfully submitted, Sally Johnston, Secretary

Officers and Chairs

- President - Rebecca Winter
- Vice President - Mary Berent
- Vice President - Connie Griffin
- Secretary - Sally Johnston
- Treasurer - Mitzi Meyers
- Membership Officer - Dagmar Rapp
- Librarian - Sally Johnston
- Web Master - Vila Cox
- Newsletter Editor - Rebecca Winter
- Sample Exchange - Julie Gerrard
- Outreach Committee - Janet Stanger
- Social Media - Dyan Lay
- ANWG Representative - Connie Griffin
- Spinning Study Group - Jinks Hunter & Dagmar Rapp
- Weaving Intensive Study Group - Connie Griffin & Rebecca Winter
- Day Weaving Study Group - Greta Ankeny
- Garment Study Group - Greta Ankeny
- COE Study Group - Mary Berent
- Bobbin Lace Study Group - Vila Cox
- Thursday Fiber Friends Zoom - Jinks Hunter

Website

<http://www.handweavers-guild-boise.org>

Mailing Address

PO Box 6258, Boise, ID 83707



