

Connecting Threads

Handweavers Guild of Boise Valley
January, 2025



January Program: Mini-Workshops

Our program for January is mini-workshops. Workshops will have signups on groups.io as all of the workshops can only accommodate 15-20 participants. If you don't sign up you will be able to fill in the spots available. The mini workshops are as follows:

- ◆ Katzy L. - Build a Bag Prototype
15-20 Participants
- ◆ Jenni J- Kumihimo Braiding
15-20 Participants
- ◆ Cindy G- Needle Felting: Birds
15-20 Participants
- ◆ Khara O.- Art Yarn
15-20 Participants

Thank you ladies, for volunteering and teaching us all new skills!

~~~~~  
How can it be we are about halfway through our guild year? Some of us have been hibernating and creating, while others are on the hustle and bustle during this - the holiday season. Soon it will all calm down and suddenly it's INTENSIVE TIME! I hope many of you have been studying borders and gearing up for this awesome 3 day workshop.

The next few months are going to be fun and exciting! We have a Fun and Fabulous Fashion Show at our February meeting, and some educational programs coming up in March and April. I sure hope you all can join us as we learn and grow together!

◆ Jenné Schiffhauer, Vice President, Program Coordinator

## Calendar of Events

### Board Meeting

January 4, 2025 ~ 9:30 a.m. - 11:00 a.m.  
Prior to the Regular Meeting at the church  
All members are welcome to attend.

### Regular Meeting:

January 4, 2025 ~ 11:30 a.m.

### Program ~ Mini-Workshops

At the First Congregational Church of Christ,  
2201 Woodlawn, Boise, in the Banquet Room  
Next meeting - February 1, 2025 - at the Church

### Study Groups:

December 31, 2024 ~ Garment Study Group  
10:30 a.m.~At the home of Rebecca Winter

\*\*January 8, 2025\*\* ~ Spinning Study Group  
11:00 a.m. to 2 p.m.~ At Rubaiyat Bookstore  
314 S 6th Ave, in Caldwell {2nd Wednesday}

Jan. 9, 2025 ~Beginning Weaving Study Group  
6:00 p.m.~ At the Studio of Sherry Bittner

January 12, 2025 ~ Paper Study Group  
1:30 p.m.~At the home of Rebecca Winter

January 14, 2025 ~ Lace Study Group  
10:00 a.m. ~ At the home of Raelene Viste

January 16, 2025 ~ Tapestry Study Group  
7:00 p.m. ~ At the home of Cindy Schafer

Every Thursday ~ Thursday Fiber Friends Zoom  
2:00 p.m. ~ Zoom link later in this Newsletter

Day Weaving Study Group ~ Will not be held in  
January, due to the Intensive.

### Workshops:

January 18, 19, & 20, 2025 - Weaving Intensive  
February 15 - Computer Weaving with Fiberworks  
April 11 - 13, 2025 - Wedge Weaving



## Workshop Information

**Fiberworks Class, by Mary Berent:** This will be presented on February 15th, Saturday from 9-4. We have yet to confirm the location this will be, but will let you know as soon as available.

**Connie Lippert Tapestry Weaving Workshop - Wedge Weaving:** This workshop, scheduled for April 11-13, 2025, is currently full. If you are interested, please add your name to the waitlist.

◆ Jenni Jimmerson, Vice President, Workshop Coordinator



## February Program: Fashion Show

We welcome everyone to take part in our February Fun and Fabulous Fashion Show. Our emcee, Michelle Heart, is the voice of 107.9FM. She loves to take part in many community and charity events. She also does cosplay (dresses up to the nines) for many of these events, and is willing to do the same for ours.

We want to make this event as comfortable and fun as possible for all of us. I know there are some of you that have created some amazing fiber art pieces and are scared to show them off. Please sign up! You are an inspiration to so many! Whether you've created a towel, a scarf, a tapestry piece, ANYTHING, we will make sure you show off your piece! We all want to see it!

I'd also like to remind everyone we are taking donations for a basket to give to our emcee for taking the time to hang out and participate in our show. Donations can be any fiber creation. She absolutely LOVED the basket from last year.

Lunatic Fringe Yarns will be giving away prizes to everyone who participates! Thank you all for your creativity and dedication to the Fiber Arts!

◆ Jenné Schifffhauer, Vice President, Program Coordinator

## President's Corner

I hope everyone is doing what makes them happy over the holidays, be it celebrating with family and friends or hibernating with fiber and a good book! As you look forward to next year you'll see that the Guild calendar has some fun events planned. In January the annual Intensive is always a really fun and instructive 3 days that will expand the weaving knowledge of all the attendees! This is an opportunity to learn a lot and make some new friends all for a VERY low cost. Hope to see you there!

◆ Mary Berent, President

## December Sample Exchange

Our first sample of the new year comes from Kelly Sandusky. She made towels out of brightly colored 5/2 cotton. Her pattern came from *Handwoven*. Check out how soft and lovely this cloth turned out and get inspired. Thank you Kelly! If you're interested in sharing, too, contact me.

◆ Christie Farrin, Sample Chair

## January Weaving Intensive

There is still time to sign up for the Intensive, and there are mentors available to assist you, if you need help.

Please remember to give your study information to me by the January 4th meeting, or anytime before. Include all the information needed to recreate the sample you are planning for people to weave at the Intensive. Add a little write-up of what you learned in your study. If you are unable to meet this deadline, reach out to me.

I will make a call for help to compile the binders when we are ready. Having a binder is one of the great benefits of participating.

◆ Rebecca Winter, Study Group Co-chair



Sample by Kelly Sandusky



## Study Groups:

### Spinning Study Group

Spinning study group will be meeting **\*\*January 8th\*\***, the second Wednesday, at our usual place and time, the Rubaiyat Bookstore in Caldwell, from 11-2.

◆ Jeannie Phillips, Study Group Chair



## Lace Study Group

The Lace Study group will meet January 14th, from 10am to 12pm at Raelene Viste's.

- ❖ Vila Cox, Study Group Chair

## Beginning Weaving Study Group

The January beginning weaving group will meet on January 9, at 6pm. We will be meeting at Sherry Bittner's studio, and this month we are studying doubleweave. Remember this is a study group, so bring the information you have learned about the weave to share with everyone.

- ❖ Sherry Bittner, Study Group Chair

## Tapestry Study Group

We will ring in the new year with our first meeting on January 16th at 7 PM.

We have a change of meeting place. Originally planned for Yarnageddon, we are going to move it into town at Cindy Schafer's home.

We will continue the study of a tapestry stitch. Please, bring your cardboard loom, if you received one in November. If you don't have one, please join us this month, as Susan has warped up more looms. Bring your projects, finished or in progress, to show and tell.

Future meetings: February meeting is planned for Julie Gerrard's home and March at Yarnageddon.

- ❖ Cindy Schafer, Study Group Chair

## Day Weaving Study Group

Our study group for January is cancelled. We will be meeting February 18<sup>th</sup> at Greta's new home, if you need the address please let me know.

- ❖ Jenni Jimmerson, Study Group Chair

## Paper Study Group

We will meet on January 12, at my home, at 1:30 p.m. We are working on Paper Weaving this month. Go find some videos on the internet and try your hand at weaving some strips together. Or check out some of the amazing paper weaving artists out there. Remember we are a study group, so the idea is to do a little homework - do a little experimenting. The good stuff happens at home in your space, and then we can share what we learned when the group meets.

We have chosen the third Sunday to meet, however this month there is the Weaving Intensive. So we decided to meet the second Sunday in January. I hope to see you here for some great inspiration and discoveries. •❖ Rebecca Winter, Study Group Chair

## Garment Study Group

The next Garment Study group will be held on Tuesday, December 31, 2024, at 10.30am. We will meet at the home of Rebecca Winter. Everyone is welcome. Please call Anne Oglevie if there are any questions.

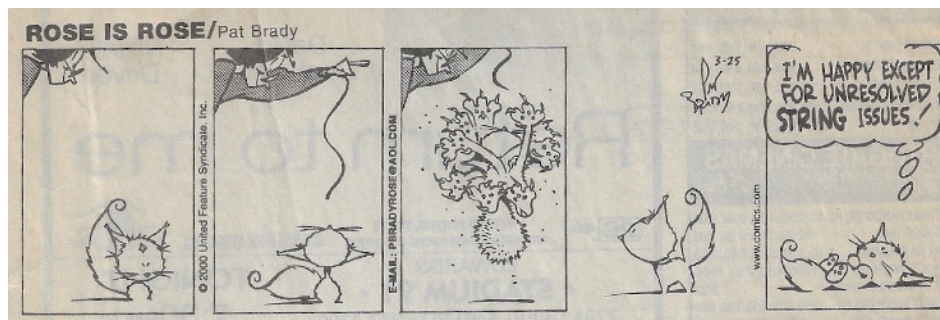
- ❖ Anne Oglevie, Study Group Chair

## Thursday Fiber Friends

We are an informal group who meet at 2pm every Thursday via zoom. We work on our projects, help each other with project questions and chat about whatever comes up. We feel free to stay the whole time (and make some progress on that project) or just pop in for a bit of time for a quick catch up when busy with other stuff. We're very flexible - please feel welcome to join us.

Zoom Link - <https://us02web.zoom.us/j/84563744178?pwd=WVI4WWNGRmJmd3A1KzIzaUtEaUtTZz09>

- ❖ Jinks Hunter, Study Group Chair



# 2025 February Fun and Fabulous Fashion Show

Hi Everyone!

On February 1 at the regular guild meeting, we will be having a fashion show to highlight our talented members' creations. Start thinking now of what you would like to model for the show. It can be anything you have created. Come with a sense of fun to model your hat, shawl, rug, coat, socks, dishcloth, or any other handmade item! Or just come to the meeting and enjoy the show!

We have found a local radio announcer to be our MC. She is not a weaver, but will appreciate the craft. We are asking guild members to donate handmade items for a thank-you basket for the announcer in lieu of payment. If you have items that you would like to donate, please let Jenne or Katzy know.

Here are the Guidelines for entrants:

1. Please model your own creation. If you choose not to, please find a substitute to show off your creation.
2. Walk slowly, smile, turn and stop several times while going down the runway.
3. Fill out an index card to hand to the announcer as you enter the runway. The card should have the following information CLEARLY written out so the announcer can talk about your wonderful creation. Consider writing your name phonetically to help the announcer.
  - Your Name:
  - Name of your entry:
  - Description (50 words or less) (Please include Fiber Content, Technique, what is it and what makes it special?)
4. Entrants may submit up to 3 items.
5. Participants and Donors of the announcer handmade basket items will receive prizes provided by Lunatic Fringe Yarns.

We can't wait to see what we all come up with! It is going to be a lot of fun!

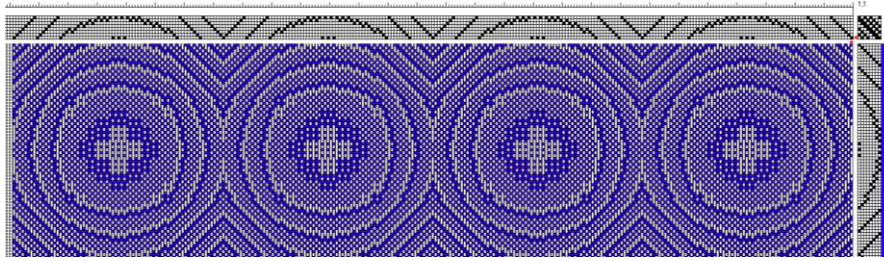
Brought to you by the hard work of the members of the Handweaver's Guild of Boise Valley; and Katzy, Jenne, and all the Lunatics at Lunatic Fringe Yarns!



# Computer Weaving with Fiberworks PCW One Day Workshop February 15, 2025

by Mary Berent

10 am to 3 pm ~ Location TBA

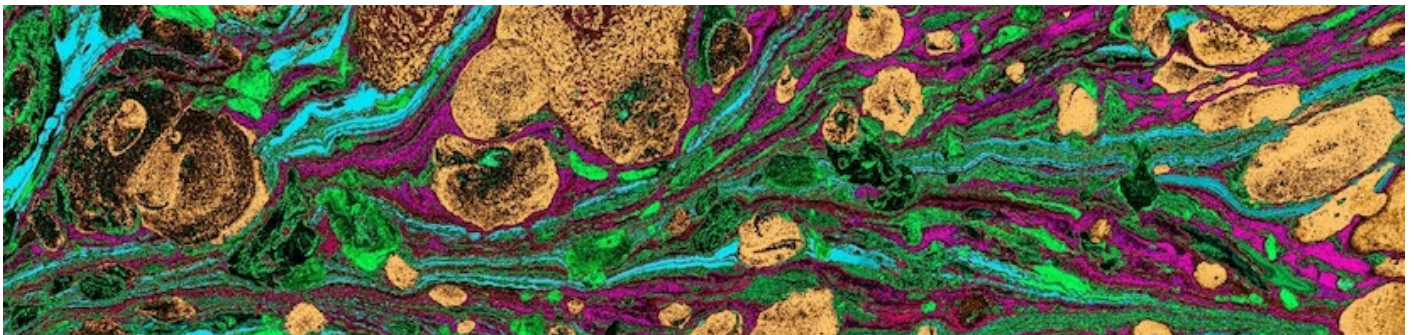


Have you always wanted to know how to use weaving software? Have you seen beautifully printed drafts others bring to meetings and wondered how to do that? Would you like to do more with your weaving software? This is your opportunity to see if Fiberworks PCW is the software for you! We will be learning to use the program and the various menu commands and options. Fiberworks is VERY weaver friendly! Just about the time you think you would like to change something or try something different, there will be a way to do just that.

You will need to bring:

- A laptop computer, either PC or Mac, **WITH FIBERWORKS PCW ALREADY LOADED!!!**  
The demo program is free to download, please do this BEFORE the day of the workshop. <http://www.fiberworks-pcw.com> Make sure your laptop is in working order. Bring a power cord and extension cord for your laptop.
- Your lunch, we will take a short lunch break, maybe 30 minutes.
- Notebook, pen, etc for note taking if you want.

We will all be working on our own laptops. Instruction will be on a large screen so you will be able to see the different menu commands and how they can transform a draft before trying it on your own computer. Each part of the draft; threading, tie-up and treadling will be manipulated using Fiberworks, plus some things you can't do when drafting with graph paper! This will be a fun and concentrated day of computer learning and designing. If you have questions, call, message or email Mary Berent 208-901-5640 [maryberent@yahoo.com](mailto:maryberent@yahoo.com). Workshop from 10-3 with a short lunch break.



## Board Meeting Minutes ~ November 25, 2024. at 1PM via Zoom

Members present:  
President – Mary Berent  
Treasurer – Kelly Sandusky  
Secretary – Dyan Lay  
Membership Chair – Cindy Griewe

Past President – Rebecca Winter  
Rose Torres  
Members absent:  
Vice President – Jenni Jimmerson  
Vice President – Jenné Schiffhauer

### Handling Financial Information in Board and Regular Meeting minutes

- Allowed: Workshop costs, budgets or spent amounts.
- Not Allowed: All other financial information including bank and CD account balances.
- The Board wants to provide transparency, but, for security reasons, will not publish any financial data on the Guild's website or in the newsletter. Members are welcome to ask for detailed information at any time.
- The Secretary will highlight any amounts in minutes drafts for Board review.
- The Treasurer will include annual financial statements with the newsletter hardcopies stored in the Guild Library for the historical record.
- Rebecca Winter will check the policies to incorporate language once a year.

### Rewards/Incentives/Affiliate Programs

- Woolery
  - The Woolery program provides a check to the Guild once a year.
  - The Woolery buying link to be published on the Guild website.
  - There might be “limited advertising” so a webpage on the Guild website will be created.
- Lunatic Fringe
  - When a guild member places an order, Lunatic Fringe will provide a 5% discount on that order to the guild member. This discount is good throughout their website for yarn, equipment, and workshops.
  - From that same order, Lunatic Fringe will also set aside a matching 5% amount for our Guild in the form of LuniCash.
  - The accumulated LuniCash will be electronically distributed each May and November.
- The Board discussed the pros and cons of both program as well as held general discussion on reward/incentive/affiliate programs.
- The Board will not provide personal lists or information to any rewards/incentives/affiliate program.
- The Board will use any awards funds to benefit the Guild as a whole rather than individual members.
- Funding could be used to add Library resources or go towards workshops.
- Dyan Lay will make the initial contact and sign up for the Woolery and Lunatic Fringe and provide the forms/details.
- Mary Berent will ask at the January Regular Meeting for a volunteer to administrate rewards/incentives/affiliate programs.



The next Board meeting is scheduled for January 4 at 10AM.

◆ Respectfully submitted by Dyan Lay, Secretary

## Regular Meeting Minutes ~ December 7, 2024

Attendees: Mary Berent, Cindy Griewe, Nancy Alzola, Marianne Poling, Linda Morton-Keithley, Jinks Hunter, Pat Dayton, Lisa Baker, Greta Ankeny, Jenni Jimmerson, Anne Oglevie, Kelly Sandusky, Katzy Luhning, Nancy Swenson, Rose Torres, Hanna Meinikheim, Rebecca Winter, Jeannie Phillips, Tasha Denegal, Kari Lawton, Dagmar Rapp, Austin Dudley, Mitzi Meyers, Jean Zaske, Marita Turner, Tessa Stone, Zena Zaleski, Jenné Schiffhauer, Sarah Sherman, Janet Stanger, Lee Turner, Mary Donato, and Tianna Harking.

### Welcome and Introductions

- Welcome by President Mary Berent with introductions.
  - Mary thanked Brenda Hatch for supplying the facility (community center) for this and many other guild events.



- She thanked everyone who filled the three free tables.

## Board Reports

- Vice Presidents – Jenné Schiffhauer and Jenni Jimmerson
  - January Mini-Workshops
    - Sign-ups will be sent out via groups.io.
    - Please sign up to assure you have space and supplies at the mini workshop of your choosing. If you do not sign up, the workshop you desire may not have supplies for you.
    - Jenni Jimmerson - Kumihimo
    - Katzy Luhring - Folded Shoulder Bag
    - Cara - Art Yarn Spinning
    - Cindy Griewe - Needle Felting
  - February Fashion Show
    - Planning a gift basket for the MC so please bring any kind of fiber art or related item to place in the basket as a thank you to our volunteer MC.
    - Contact Jenné if you would like to participate in the fashion show with one or more of your items.
  - Tapestry Workshop
    - 12 members are signed up.
    - 2 on waiting list and the wait list is still open if you would like to be on it.
  - Fiberworks Class
    - Mary Berent to teach a class on using Fiberworks with a focus on beginning use of the computer program.
    - Date TBD but probably in February.
- Treasurer – Kelly Sandusky
  - All is well, and the Guild has money.
- Membership – Cindy Griewe
  - We have 90+ members, and Cindy reminded members to pick up a Guild directory.

## Committee Chairs

- Study Groups
  - See Guild website for study group schedules and leaders.
  - Garment Study Group is December 31<sup>st</sup> and will be at Rebecca Winter's home.
- Weaving Intensive – Rebecca Winter and Pat Dayton
  - Date: January 18-20, 2025
  - 3-day “no-teacher” workshop
  - Topic: Borders-any structure, fiber, and color but with a planned border
  - Cost: \$35 (Pat Dayton collecting forms and fees)
  - Location: Brenda Hatch's Community Center in Meridian.
  - Flyer available for additional details.
  - Rebecca Winter needs your drafts/instructions/information/etc. by Jan 4<sup>th</sup> guild meeting.
    - Submit in electronic or hard copy form to Rebecca.
    - Draft/record sheet should include draft (threading, treadling or lift plan, tie-up), sett, fiber(s), color, and anything else important for you fellow weavers to be able to weave on your loom.
    - Rebecca Winter has a sample record.
    - Blank record sheets are available on the guild website under “resources.”
  - The Intensive is the opportunity to showcase what you have learned through the process of preparing for the intensive.
- Rebecca Winter
  - Margaret Martin founded our guild in 1972.
  - Rebecca has housed her 8-shaft Dorothy table loom for many years.
  - This loom was hard to use for some, due to its mechanisms
  - Recently, Cindy Griewe's husband Ray retrofitted the loom into a more typical wooden lift loom



- Thanks to Ray for allowing another sweet little loom to be added to our guild lending equipment library
- Beginning Weaving Study Group
  - The Group is meeting this Thursday evening at 6pm (Dec 12<sup>th</sup>) at Lunatic Fringe in Fruitland. Show and Tell followed, then the meeting was adjourned, and everyone enjoyed a wonderful potluck lunch.
- ◆ Recorded by Cindy Griewe (thank you very much!) and respectfully submitted by Dyan Lay, Secretary



### Interesting Links to Check Out:

<https://weavearealpeace.org/natural-dyeing-in-hueyapan-puebla/>

<https://warpedfibers.com/weaving-with-paper/>

<https://handwovenmagazine.com/paper-weaving-intriguing-and-inspiring/>

<https://www.hachettebookgroup.com/articles/100-day-project-paper-weaving/>

