

Connecting Threads

Handweavers Guild of Boise Valley

June, 2010

Calendar of Events

June 5, 2010 - Guild Meeting - Annual Picnic
at the Home of Kathy McGowan
3496 Holl Drive, Eagle
11:30 am

Directions o Kathy's House: Go north on Eagle Road from Boise or Meridian. Turn right onto Beacon Light. Turn left onto Holl Drive and proceed to Kathy's address.



Summer Schedule - Spinning Study Group
See Page 5 for more information.

Summer Schedule - Day Weaving Study Group
We are meeting on May 24th at 1 pm. at the home of Vila Cox. Look for emails from our Yahoo group over the summer for details of summer meetings.

August 28, 2010 - Guild Meeting - First of the Year
Adelmann House

September 25, 2010 - Museum Comes to Life
Guild Show and Challenge: Thick and Thin
Adelmann House

June Annual Picnic

It has been another great year for the Handweavers Guild of Boise Valley. We hope you can all come to the annual potluck for the last meeting of the year. This year we will be meeting at Kathy McGowan's in Eagle. Meeting time is 11:30 am. So dig out your favorite potluck recipe and let's party. The food will be wonderful and so will the company. We're looking forward to a great gathering one more time before we take a break for the summer.

Ramblings of the President

June is just around the bend and so ends another year for the guild. As your outgoing president, I want to thank all of you for your participation. As an all volunteer group it really takes the effort of the members to make things work.. It has been a real pleasure to serve as your president the past to years. Give yourselves a pat on the back in appreciation.

With summer here (almost), that means Museum Comes to Life and with that the "Challenge" are fast approaching. I hope you are further along with your project than I am.

❖ Al

Dues are Due

Guild dues are due in June of each year. So they are due now. Individual membership is \$25.00 per year. Bring them to the June meeting or contact Penny Schraufnagel, Membership Officer, for more information, at 342-1288.



Guild Meeting Minutes

May 1, 2010

President Al Hayden called the meeting to order at 11:40AM at the Adelman House. Members introduced themselves: Al, Vila, Irene, Rebecca, Wendy (guest-daughter of Cheryl), Cheryl, Penny, Marilyn, Michelle, Julie, Lynn, Pat, Mary, Mitzi, Nancy Whitman (new member), Marita, and Ivy.

Al announced that today's program is the annual Yarn and Equipment Sale, and that 10% commission is to be paid to the guild treasurer, Irene, by the sellers, and that members will transact sales with each other. No tax collected.

Next meeting will be the June Potluck, to be held at Kathy McGowan's home. The incoming officers will take office next month at this meeting, but the incoming vice president will conduct, as both outgoing and incoming presidents will not be there, due to prior commitments. See the website for times, etc. Reminder to any new member to send email address to Vila Cox so Vila can invite them to join our Yahoo group. Vila as webmaster also reminded us to see the changes on the membership page, and to view information on the Challenge for September.

Treasurer's Report: Irene has paid for the Ruby Leslie Workshop, and our current balance is \$ 3355.54.

Sample Chair: Rebecca reminded us to pick up the Sample for the month, which is spun by Lynn Ruggles. Left-over samples from last year can be taken by new members, and extras can be placed in the library, suggested by Pat Anne. No need for sign-up sheets with these. If members who do not attend the meetings want samples, they can send SASE to Rebecca each month for their samples. If you have missed a meeting, pick up your missed sample as well.



Day Study Group: Rebecca said new meeting date will be Mondays, starting May 24, at 1 PM at Mary's. (This was later changed by Email to Vila's home). COE recipients will have their COE boxes to show and will describe the process. New member Nancy Whitman is now preparing her entry for COE.

Membership Chair: Penny announced that with new member Nancy we now have 48 members. Penny is now collecting dues for the 2010-2011 year. Due by June 1. If you have just joined and paid after April 1, your dues for 2010-2011 will be included.

Spinning Study Group: Lynn said the following:
1) next spinning study group meeting will be on May 13 from 6:30 to 8:30 at Marilyn's. It's the last meeting for the year, and it will be a party. There will be items for sale from Shirley Sterling's estate, and these are also available today for the Yarn and Equipment Sale. Shirley's husband is here for the sale. The group will also meet over the summer: June hosted by Mitzi, July by Judy Banducci, and August by Julie.

2) Convergence: her class has 5 students, it's still open, and she's still teaching it.

3) She's going back to work at Hewlett Packard short term.

4) She has Weaver's Record Sheets and a pad of H.Tidball sample sheets available, and she passed these around. Rebecca suggested placing these in the sample box for use when needed by members.

Library Chair: Pat said Janet Phillips' new book is now in the library. Janet teaches classes in Britain. This is the last day for this year to check out books and they will be kept for the entire summer. Give the filled-out card to Pat. Misc. and Spinning books and magazines will be in one cabinet, and Weaving in the other cabinet

COE Study Group: Mary said the COE group meets every other month and the next meeting will be July 3, at Moxie Java on Vista and Kootenai. She will email reminders prior to the meeting.

Challenge: Vila said entries must use threads/yarns that are obviously different in size. Also complete your other items as they will be shown separate from the Challenge entries. The purpose of the Challenge is to participate in the Museum Comes to Life, showing the crafts that were done in the past. The public will vote on the woven and spun items entered in the Challenge that they like best. Prizes will be \$50, \$35, and \$20 in each of 4 categories. The contest helps the public to take time to actually look at the items. This is more interesting for the public. Wear period costumes if possible and sign up to work at the show, so that our volunteers will not be overloaded.

Other announcements: Mitzi mentioned the Renaissance Fair to be held in October in Emmett. Call Mitzi for more info. Shirley Sterling's partially crocheted shawl was given to Irene to complete.

Gold bag went from Vila to Pat. I think it contained skeins of brown yarn.

Show and tell: Mitzi: wolf/husky mix dog hair woven into a blanket in two panels. Shirley Sterling spun the yarn and Mitzi wove the panel.

Mary : yellow double weave advancing twill towels, and a blue towel. Tied on new warp-took longer but was accurate. Also tried eyelash weaving, cutting one layer of double woven fabric, washing and brushing. Showed purple thread spun.

Lynn: new spindle, silver and ebony, purchased with COE gift.

Rebecca: shadow weave sample, 6 harness point t twill in shades of blue.

Penny: 2 scarves in green and blue mostly wool.

Cheryl: sample for name draft in mauve tones.

Irene: several items knitted and woven in the last year, including afghan of knitted squares with crocheted edging.

Al commended our group for being lively and inspiring and for thus encouraging all to keep weaving and spinning and having fun.

Vila requested members who have photographs of landscapes, florals, or still life to forward them to her if they would allow her to use them in watercolor paintings. Not interested in people or animals.

The meeting was adjourned and the members enjoyed the Yarn and Equipment Sale.

◆ Respectfully submitted, Irene Chandler, filling in for Cynthia Newman, Secretary



The Challenge for Museum Comes to Life

◆ ⇄ ⇄ ⇄ ⇄ ⇄ **Thick & Thin** ⇄ ⇄ ⇄ ⇄ ⇄

Don't forget to work on your Thick & Thin entries for the Challenge over the summer. All entries must be made from a combination of thick and thin. The information sheet for this year's challenge is on our website at:

<http://www.handweavers-guild-boise.org/documents/ChallengeInfo2010.pdf>

The entry form is available is at:

<http://www.handweavers-guild-boise.org/documents/ChallengeSignUp2010.pdf>

In addition to weaving, spinning and creating all the wonderful entries for the Challenge, we need volunteers to be at Museum Comes to Life. The Historical Museum requests all volunteers be in "period costumes". A long skirt, blouse, and a shawl works well for our area. There will be a volunteer sign up sheet at the August meeting. The event is September 25th from about 9:00 am to 5:00 pm and we need people to hand out ballots for the Challenge, weave on the rug loom we will have set up, and to talk to visitors in the area we will have other woven items that don't fit the Challenge categories. Our spinners can find a spot and demonstrate spinning.

If you will not be at the August meeting and would like to volunteer, please contact Vila Cox vila@icehouse.net to be added to the list. Everyone's involvement is needed to make Museum Comes to Life and the Challenge a success. We will be setting up the display at 1:00 pm on September 24th and help is welcome then too!

◆ Vila



Robyn Spady Workshops

These are our choices to choose from for our March 2011 workshop. Be thinking about which you'd like, as we should decide sometime in the next few meetings so that we can let Robyn know. Contact Kathy McGowan to let her know which you prefer.

1. Extreme Warp Makeover:

Hate to warp, but love to weave? Want more versatility from a single warp? Then this is a workshop for you! In this workshop, participants will warp their loom with their choice of one of three four-shaft threadings and perform an extreme makeover and weave it many different ways . . . from twill, lace, and overshot to swivel, corduroy, deflected weft, and double-faced. At the same time, participants are presented with the basics of different structures and how to adapt a single threading to weave a number of different weaves, including concepts such as star vs. rose fashion, weaving on opposites, and echo treadling.

In the two-day version, there is a brief introduction for each weave structure covered. There is a maximum of 24 participants for two-day version

In the three-day version, there more variations on the weave structures covered in the two-day workshop. Plus, there's more time to weave. There is a maximum of 36 participants for three-day version

2. Pictures, Piles, Potpourri and Perplexing Curiosities:

This is a workshop designed for intermediate-to-advanced weavers (and adventuring-seeking beginners) that want to learn new weave structures. In this round-robin workshop, participants will expand their knowledge and experience in weave structures they may have heard of but, may not have woven. A surefire weaving adventure and challenging journey of warp and weft. Structures covered include multi-block swivel and bead leno, corduroy, velvet, samitum, corkscrew twills, lampas, and Beiderwand

This workshop is only offered as a three-day workshop because of the advanced nature of the weave structures covered and the amount of time required to review and weave them.

3. There are Two Sides to Every Cloth.

All cloth has two sides, so why not make them as distinct and interesting as possible, even completely different? On as few as three shafts, it's possible to weave versatile fabric that possesses a completely different appearance on each side. In this round-robin style workshop, participants will be presented with numerous ways to achieve cloth with two different sides, including double-faced twills, double-faced overshot, and stitched double cloth.

In the two-day version, the workshop begins with introductory review of each of the 12 different double-faced weave structures that will be covered during the workshop. Of the nine structures covered, one is three-shaft, five are four-shaft, and three are eight-shaft patterns.

In the three-day version, additional structures and alternative treadlings are covered (total of 15 double-faced weave structures). Plus, there are two in-depth presentations included during the workshop. One on designing and weaving stitched double cloth and the other on seaming and design techniques for reversible garments made from double-faced fabrics.

4. The Fab Four.

The Beatles are not the only "Fab Four." Four-shaft looms are fabulous and frequently underestimated for their potential and versatility. Much of this value may be found in uncommon weave structures that are capable of producing distinctive and remarkable results. In this round-robin workshop, weave structures explored will include, but are not limited to: Diversified plain weave, integrated weaves, swivel, single block bead leno, corduroy, Bedford cord, deflected supplementary warp, and cannelé.

In the two-day version, the workshop begins with introductory review of each of the 12 different four-shaft weave structures that covered during the workshop.

Shirley Sterling Stars

Here is an interesting spot of information for those of you who received one of Shirley's stars. I found a website that gives instructions on how to make them. It is as follows:

<http://highhopes.com/3dstar.html>

Enjoy, Your Editor

New members

Martie Hawkins
10054 Lake Shore Dr.
Nampa, ID 83686
466-4186 H
484-8176 C
martiemedleg@yahoo.com

Nancye Whitman
PO Box 214
Garden Valley, ID 83622
462-3290
fwhitman@frontier.net

~ Advertisement ~



Her Spirit
Center for Women

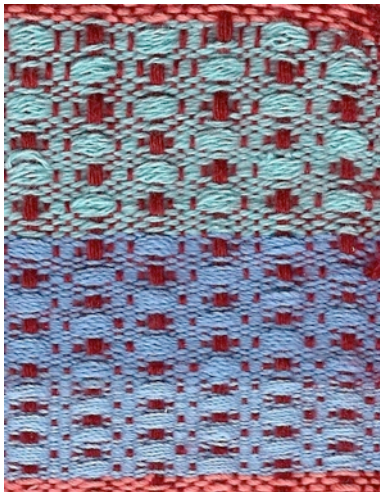
Her Spirit is a business cooperative center dedicated to enriching the lives of all women by developing, providing and promoting a climate of respect, trust and support through consulting, healing, training and networking opportunities.

Pioneer Square, 5181 Overland, Boise, Id 83705
Phone 208 345-3588, Email: info@herspirit.net



Monthly Sample Exchange

For June our sample comes from Irene Chandler. She used a draft from the website, handweaving .net, which is featured regularly in this newsletter. Her purpose was to experiment with different sizes of weft.



Warp - 6/1 Poly, Brick
Weft - 8/2, 10/2, & 16/2 cotton
Sett - 20 epi



Remember to pull your samples from the Sample Exchange Box at each regular Guild meeting. And remember to check your name off the list in each file folder. If you would like participate or have questions, contact the Sample Chair, Rebecca Winter.

Study Group News

♥ Spinning Study Group - Summer Spinning
Saturdays

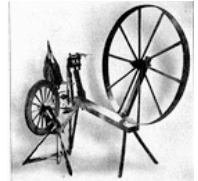
June 26: Spinning will be at Mitzi Meyer's house at 11200 Sweet Ola Hwy, in Sweet Idaho. Contact Mitzi

(warpedweaver@hotmail.com) or Lynn (espinphd@yahoo.com) for more info.

July 17: Spinning will be at Judy Banducci's house at 2990 Holl Dr, Eagle, ID. Contact Judy (jbanducci@speedyquick.net) or Lynn for more info.

August: Spinning will be at Julie Gerard's house at 2020 Mortimer Court, Boise, ID. Contact Julie (jgerrard4@gmail.com) or Lynn for more info. Date will be announced soon.

Spinning will be from 10-3, and includes a pot luck lunch, so bring a dish to share. The hostess will provide basic drinks (ice tea, lemonade, or water). You might also want to bring a chair.



We want everyone in on the FUN, so if you want to learn to spin, just let someone know, and it can be arranged!

Summer Spinning is open to anyone who wants to attend. Non-spinners will occasionally be harassed by spinners, so be prepared to defend your non-spinning skills.

♥ Day Weaving Study Group

Look for emails from our Yahoo group over the summer for details of meetings. Call Rebecca at 859-2822, for more information.

♥ Certificate of Excellence (COE) Study Group

The COE study group will tentatively meet next on Saturday, July 3. We will meet at the Moxie Java on the corner of Vista and Kootenai in Boise. Look for emails from our Yahoo group over the summer for details of meetings. Call Mary Berent for more info. at 939-8906.



Guild Officers and Chairs

President: Al Hayden 343-7300
Vice-presidents: Cece Stricklin 387-2641
Kathy McGowan 939-7215
Secretary: Cynthia Newman 541-523-2451
Treasurer: Irene Chandler 467-4997
Membership Officer: Penny Schraufnagel 342-1288
Librarian: Pat Ann 452-3181
Newsletter Editor: Rebecca Winter 859-2822
Weaving Intensive Study Group: Al Hayden
Spinning Study Group: Lynn Ruggles 375-9172
COE Study Group: Mary Berent 939-8906
Day Weaving Study Group: Rebecca Winter
Web Master: Vila Cox 323-7736

Website

<http://www.handweavers-guild-boise.org>

Connecting Threads
PO Box 6258
Boise ID 83707

The monthly newsletter from the



handweavers guild of boise valley, inc.

June Newsletter Highlights:

- ☀ **Program: Annual June Picnic**
- ☀ **Dues are due. See page 1.**
- ☀ **Check out this year's Challenge: See page 7.**
Volunteer for this event, one of the major events of the year for our guild.

