

# ☞ Connecting Threads ☞

## Handweavers Guild of Boise Valley June, 2012



### June Program: The Annual Picnic!!

The annual June Potluck Picnic will be extra special this year as we will be celebrating the **Guild's 40th Birthday!** Lynn Ruggle's committee is planning all sorts of fun birthday things for the picnic. Bring a fiber related donation for the door prize drawing if you have a treasure (not a White Elephant, please) to pass on to someone else. Don't miss this party. It promises to be a lot of fun!

We will meet at Penny Schraufnagel's house, 11:30 am. Bring a pot luck dish.

### Calendar of Events

### Challenge 2012

June 2, 2012 - COE Study Group  
Before the Picnic at Penny's House  
10:00 to 11:00 am

June 2, 2012 - Regular Guild Meeting  
Annual Picnic - 40th Birthday  
At the Home of Penny Schraufnagel  
11:30 am



**See Directions on page 2.**

Bobbin Lace Study Group - 6:30 pm - 8:30 pm

June 12, 2012 - Rebecca's Studio House  
July 10, 2012 - Rebecca's Studio House  
August 14, 2012 - Rebecca's Studio House

Spinning Study Group  
See Details for the Saturday Summer Spinning  
On page 2.

Day Weaving Study Group - 1:30 pm  
June 18, 2012 - The Home of Lynn Ruggles  
July 16, 2012 - The Home of Rena Lute  
August 20, 2012 - Rebecca's Studio House  
August 25, 2012 - Next Regular Guild Meeting

### Beginning Weaving Study Group Forming

There was quite a lot of interest in the Beginning Weaving Study Group. About twelve people said they would like to participate. We will plan to begin in the Fall. Some want to meet in the day and some in the evening.

Would all interested people **please stay after the June party** to have a few minutes to discuss the options.

☛ Anne Oglevie

Four more months until Museum Comes to Life, when the Handweavers Guild of Boise Valley will present a **Color Explosion**. An explanation of the 2012 Challenge and entry forms are included in this Newsletter. There is still time to sign up to volunteer. Look for the sign up sheet at the picnic in June. We will also have a separate display to show the public what guild members work on throughout the year. If you have any questions, please feel free to contact any of the Challenge committee members: Vila Cox, Julie Gerrard, and Melanie Smith.

### New Study Group: From Fleece to Garment

Have you always wanted to start from a raw fleece and end with a wearable garment? This study group with work through the entire process from how to buy a fleece, how to clean it, we will discuss how to spin it and then what to make from the yarn. Our first meeting will be at the Western Idaho Fair. August 25. Plan to come to spin and look at the fleeces that will be up for silent auction. If you would like to join in on the fun, please let Melanie Smith know so we can arrange fair tickets. Email her at [yarnsnthreads@aol.com](mailto:yarnsnthreads@aol.com)

\*\*\*\*\*



### Directions to Penny's house for the Picnic:

From either Boise or points west on Highway 84, take the Eagle Road exit from the freeway. Turn south on Eagle, go past Overland about 2/3 of a mile up a slight rise. A fire station will be on your right and the turn left on Easy Jet will be coming up. Turn left and follow Easy Jet to the end where it turns left on Tristram. Four houses later turn right on Hollandale. Proceed to the stop sign on Goshen. We are across the street, slightly to the right at 2688.

If coming from Boise on Overland, turn left on Cloverdale; go about 1/2 mile and turn right on Muir Ridge; continuing until it turns left and becomes Goshen Way.

### Saturday Summer Spinning

Saturday Summer Spinning starts in June. We meet from 10am-3pm, with a potluck lunch.

**June 16:** Maralyn Larson's clubhouse, 350 E. Carmel Drive, Meridian.

**July 14:** Anne Olgevie's house in Weiser, ID. Address: 30 Hill Road, Weiser.

Directions: Take 84 west to Exit 3, Fruitland and Payette. Head north on Route 95 through Fruitland and Payette. Drive north for about 5 miles, turn right on Cox Road. Cox Road intersects Hill road in a T-intersection. Turn left and the driveway is through the orchard just north of the intersection. Note that if you look at Google Maps, the location shows the house south of Cox Road which is incorrect.

**August 4:** Pat Ann's Studio in Fruitland, ID. If you want to dye yarn at Pat Ann's in August, bring your skeins to the June or July meeting and give them to Lynn. Skeins should be tied and labeled with your name (hint use tyvek for labeling so it is waterproof. Tyvek is the paper used for Priority Mail envelopes). Limit of 4 skeins each.

Directions: Take 84 west to Exit 3, Fruitland and Payette. Head north on Route 95 to Fruitland. Just north of the intersection of 95 and Route 30, look for the red and white Sign Art sign on the left. Turn left into the driveway and park either inside or outside the gate.

◆ Lynn Ruggles

\*\*\*\*\*

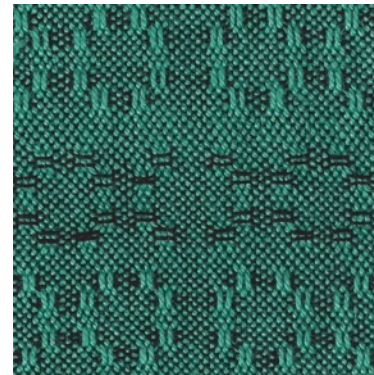
### Notes From Your President

It is sooo green out here in the country with the mountain staring at me through the dining room window. The arrowleaf balsam root blooms are almost finished, followed closely by the mules ears. Love their bright sunflowery look. They look so happy! The colors of the land inspire me to weave...maybe a new color harmony. Looking forward to a great Challenge this fall of color explosions; hope you will all be working on your entries this summer. May you all have the most colorful, fun summer ever. Thanks for all you do.

◆ Your President, Mitzi Meyers

### Monthly Sample Exchange

This month's Sample was provided by Julie Gerrard. Another beautiful sample from the May/June 2010 Handwoven. This one is for Dish Towels, the weave structure is Spot Bronson, and done in a very nice green and black. Don't forget to get your sample so you can see the pretty colors in person.



Please turn your samples in to Al Hayden, the Sample Chairperson.

Members may pull samples from the **Sample Exchange Box** at each regular guild meeting. And remember to check your name off the list in each file folder. If you would like to participate or have questions, contact the Sample Chair.

Also, remember, there are samples from last year that are available to anyone toward the back of the box.

### From Your Membership Officer

Please welcome our new member, Teri Schladensky. We are so happy to have several new members this year, and we look forward to getting together with them and getting acquainted.

◆ Irene Chandler

## Study Group News

### ♥ Spinning Study Group

See Details for the Saturday Summer Spinning on page 2.

### ♥ Certificate of Excellence (COE) Study Group

COE Study Group will meet **June 2** before the annual picnic at Penny Schraufnagel's house at 10:00. Please note the change of time and place for the month of June. As usual, everyone is invited, for information call Mary Berent, 939-8906.



### ♥ Day Weaving Study Group

We will meet on **June 18**, at the Home of Lynn Ruggles, 1:30 p.m. Call Rebecca at 859-2822, for more information.



### ♥ Bobbin Lace Study Group

We meet on the second Tuesday of every month. In **June** it will be on the **12th**, at Rebecca's Studio House at 6:30 pm. Call Vila for information, 323-7736



### ♥ Sock/Knitting Study Group

We will be taking a break over summer. If you need any help with a knitting project that you are working please give Melanie Smith a call or send an email. See you again in September.



\*\*\*\*\*

## Board Meeting Minutes

Board Meeting of May 5, 2012, Moxie Java on Vista

Present: Mitzi Meyers, Melanie Smith, Rena Lute, Rebecca Winter and Janet Stanger

The Board Meeting was called to order at 1020 am by Mitzi Meyers, President; meeting at Moxie Java on Vista Ave. The Board requested a committee be formed to review the policies of the Guild. There are some issues that need clarifying in relation to how the workshops are managed. Rebecca Winter volunteered to chair the committee, and Mary Berent has already volunteered to serve on the committee. Melanie Smith and Janet Stanger volunteered to serve on the committee during the Board meeting.

Rena brought up the topic of how the Library is being organized. There was a discussion. Sometimes it is hard for members to find what they are looking for. Judy, Librarian, is planning to spend time over the summer organizing the cabinets, which are very full. It may be important to update the Library List online on the website so members can see what is available. Some Handwoven Magazines and other magazines were donated by the Linda Mercer estate to fill in any missing issues.

Melanie Smith presented a treasurers report of \$4,240.34. We brought in \$85.00 and had expenses of \$262.83. She stated she would e-mail the end of the year report later. She was reminded that June 30<sup>th</sup> is our year end date. She had plenty of time to get it ready to be presented at June meeting. She wants to stream line receiving dues. She has asked that next year's dues not to be submitted to her until June, that way it would be easier to maintain an accurate record of how much we take in as dues each year. Membership forms should be filled out each year when paying dues. Policy team will go over these issues.

ANWG- is asking us for a cash donation. Policy states if it is over 100 dollars it must be voted on by the guild. It was suggested to offset the cost of the members going to conference instead. Melanie feels there should be some members go as we have a couple of local instructors going to be there to teach and it would be nice to go and give them support. After much discussion Mitzi will find out who is interested in going. And we will decide from there.

Rena Lute announced the results of the Susan Wilson workshop sign up that was done at the last guild meeting. It was a tie between hand towels and the interlacement motif. Rena was wondering of the possibility of our COE's, Mary or Lynn doing a workshop in 2013. Rena moved to invite our local COE recipients Mary Berent and Lynn Ruggles to do a workshop for our local guild. We will ask that Mary do the weaving workshop and Lynn do the spinning workshop. The motion was seconded by Mitzi. There was discussion and motion was passed.

Meeting adjourned to attend regular guild meeting.

◆ Respectfully submitted, Janet Stanger Secretary



## Guild Meeting Minutes

Regular Meeting of May 5, 2012, Adelman House

Present: Janet Stanger, Pat Ann, Anne Olgeve, Kathy McGown, Julie Gerrard, Dee Verti, Penny Schraufnagel, Rebecca Winter, Jean Zaske, Tera Jones, Chris Farrin, Carol Freeman, Caroline Dade, Judy Tallent, Rena Lute, Teri Schladensky, Melanie Smith, Al Hayden, Nancy Swenson, Janet Hannity, Mary Siedenstrand, Lynn Ruggles, Vila Cox, Mitzi Meyers, Ivy DeHart, and Marita Turner.

VP Rena Lute announced that the Susan Wilson workshop interest was even between the "hand towels" and "the Interlacement Motif."

Mitzi reminded us that June was the Picnic at Penny's house. It is the Guild's 40<sup>th</sup> birthday. Lynn reports that there is a budget for a party and is asking for a donation for door prizes. It is potluck. There is a COE meeting prior at 10:00 and the potluck guild meeting starts at 11:30.

Treasurer reports that there is \$4,240.34 in checking.

Membership Irene Chandler is not present. No report. Mitzi will accept dues today in the absence of Irene.

Librarian Judy Tallent reports that the CDs and books that she ordered are in. There are 2 CD sets and 2 books and they have already been checked out. If you check something out this month, you can return the books to Judy at the picnic. She is going to reorganize the library during the summer.

Newsletter - Rebecca reminded everyone that she would be looking for everyone's input by the middle of the month. She also passed around a profile draft that she had gotten off handweaving.net that could help us plan out our summer and winter scheme for the Intensive.

Web master Vila Cox reports that the web page is working. She had to change hosts. The old host was getting to slow and had locked Vila out of her change screen.

Sample Exchange: Al Hayden announced that Kathy McGown had provided the sample for this month. He also has 1 opening for someone to provide samples for next year. If you are interested sign up.

AWNG: The conference will be held in Bellingham about a year from now. Rebecca has forwarded information via the yahoo group about the conference. Melanie Smith asked for a show of hands of who wanted to go so we could figure out

how we could represent our guild and support our local teacher, Rebecca.

Challenge Chairman, Julie Gerrard reminded us that the Challenge date is Sept 29<sup>th</sup>. She has the information and signup sheets in the Newsletter. She passed around signup sheets for set-up and workers to cover the event itself. She will have more about the event at the next meeting.



### Show and Tell

\*Mitzi showed a sample of a wedding shawl she was working on. She also announced she is having an open house on May the 12<sup>th</sup>.

\*Lynn Ruggles brought a cotton chenille sample that she had woven to be the size of a towel. It did not work, but it shrank to be less than half the original size.

\*Melanie Smith showed us a hand woven silk scarf

\*Carolyn Dade shared a carpet runner that she had woven and asked if anyone had rug weight wool for sale. She also showed us another of her exquisite tapestries. This one was of a mountain scene. She uses a photograph as her inspiration.

\*Tera Jones showed us a potato chip scarf that she was working on. She also explained how to knit the scarf.

\*Rebecca Winter shared a star sample from her workshop, and kitchen towels she had made on her counter balance loom. She had used 10/2 cotton.

\*Kathy McGown shared a skein of hand spun cotton and yardage of bump fabric she had woven to make a jacket out of. It was not woven to be bump fabric, but when she washed it the handspun shrank more than the other yarn and it created equally distributed bumps in the fabric. This was purely an accident.

\*Anne Oglevie showed several samples she had made from the weaving school she attended on Whidbey Island. Ann is also starting up the Beginning Study Group and passed out a sign-up sheet.

\*Marita Turner shared a hand knitted sample from silk that she received at the meeting, and a yardage of dyed fabric she had purchased in Hawaii.

\*Ivy Dehart showed a picture of something she was currently working on.

Intensive: Lynn will have more about the intensive workshop next year. The pattern will be Summer and Winter. Places for the Intensive were discussed. Ivy DeHart's husband offered his business place for us.

Study groups: Information is posted on the web, newsletters and yahoo groups. Please check there for your information. Melanie Smith took a show of hands of people planning to take her study group From Fleece to Garment.

There were no UFO's

There has been a need to review policies and a committee was formed. Rebecca Winter is Chairman and volunteers to be on the committee are Melanie Smith, Mary Berent, Janet Stanger, Al Hayden and Vila Cox.

Melanie Smith won the gold bag.

Lynn Ruggles reports she approached the Idaho State Fair Board about problems the weavers and spinners were having that was causing a down fall in their participation. Lynn volunteered to help them. If they respond positively, Lynn encourages the guild to show their support by entering items in the fair.

Meeting adjourned for the annual Guild Yarn and Equipment Sale.

◆ Respectfully Submitted, Janet Stanger, Secretary

### Officers and Chairs

- President: Mitzi Meyers 340-9775
- Vice-presidents: Mary Berent 939-8906  
Rena Lute 891-2111.
- Secretary: Janet Stanger 377-0746
- Treasurer: Melanie Smith home 385-0085 cell 608-0101
- Membership Officer: Irene Chandler 318-8182
- Librarian: Judy Tallent 208-615-1857
- Newsletter Editor: Rebecca Winter 859-2822
- Sample Exchange: Al Hayden
- Spinning Study Group and Weaving Intensive Study Group: Lynn Ruggles 375-9172
- COE Study Group: Mary Berent 939-8906
- Day Weaving Study Group: Rebecca Winter 859-2822
- Beginning Weaving Study Group: Anne Oglevie
- Bobbin Lace Study Group: Vila Cox 323-7736
- Web Master: Vila Cox 323-7736
- Past President: Cynthia Newman (541) 523-2451

### Website

<http://www.handweavers-guild-boise.org>

Note: This Newsletter is located online at this address.

### From Your Editor

Here is a little something from a Ravelry.com, Warped Weavers member. I thought you might enjoy it. It was in response to the question, "What do you think about while weaving?" ◆ Rebecca Winter

»»» The rhythm of the loom 🌀, the clacking of the shuttles Θ, the woosh of the reed ≡ are like the peaceful rhythm of ocean waves breaking on the shore~~~~~. It is truly zen like †. The bustling world seems miles away »»Φ. The unfolding pattern appears with each pick and I can't believe that it is happening right in front of my eyes. Sometimes I wonder to myself, ☺ "Did I do this?" ♥ ♥ ♥.

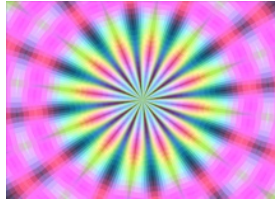
I love the peaceful orderliness of it all ☀ ☀ ☀

~ Dave Wismar



## 2012 Challenge

C o l o r



Explosion!!!

Use at least 3 colors for each item  
Select color harmony for each item

All entries must be entirely your own and created since September 2011

Entry fee - \$5 first entry, \$2 for second, \$2 for third or more entries for a maximum of \$9.

Four Categories:

1. Flat Handwoven (yardage, hemmed or fringed items such as scarves, dish towels, shawls).
2. Handspun Skeins (80% handspun) (fibers must be identified)
3. Finished Items for Handspun (50% handspun) (fibers must be identified)
4. Fiber Arts (3-dimensional items, felted items, baskets, garments)

A card will be attached to each entry after entries are submitted. Please provide the following information with each entry:

1. Color harmony chosen
2. Weave structure for handwoven entries
3. Fiber content for all entries

Prizes for each category

\$50 First Place - \$35 Second Place - \$15 Third Place

Registration is due by Saturday, August 25 ----- Finished items are due by September 22  
Museum Comes to Life is Saturday, September 29

Name	2012 Challenge Entry Form Information for Each Challenge Entry	Sample of fiber
	Entry Fee - \$5 first entry, \$2 for third or more entries, for a maximum of \$9. Number of items entered _____. Total amount of Entry Fee _____.	If fibers were blended, provide a sample of each color in the color harmony.
Category		
Description of Piece		
Color Harmony		
Fiber Content		
Category		
Description of Piece		
Color Harmony		
Fiber Content		
Category		
Description of Piece		
Color Harmony		
Fiber Content		
Category		
Description of Piece		
Color Harmony		
Fiber Content		



Connecting Threads  
PO Box 6258  
Boise ID 83707

The monthly newsletter from the



handweavers guild of boise valley, inc.

## Newsletter Highlights and Please Remembers:

June Program: The Annual Potluck Picnic,

Plus -- **Happy Birthday** to the Handweaver's Guild of Boise Valley

Are You Thinking About Challenge 2012?

