

Connecting Threads

Handweavers Guild of Boise Valley
June, 2013

June Pot Luck and Picnic

The June meeting will be held at Kathy McGowan's house on Holl Drive in Eagle. Don't forget to bring show-and-tell as well as your pot luck dish!! This is always a fun meeting before summer.



Calendar of Events

June 1, 2013 - Guild Meeting - Annual Picnic
at the Home of Kathy McGowan
3496 Holl Drive, Eagle
11:30 am

Directions to Kathy's House: Go north on Eagle Road from Boise or Meridian. Turn right onto Beacon Light. Turn left onto Holl Drive and proceed to Kathy's address.

June 1, 2013 - COE Study Group
Prior to the Picnic at Kathy McGowan's
9:30 to 11:00 am

June 11, 2013 - Bobbin Lace Study Group
6:30 pm to 8:30 pm
Rebecca's Studio House

June 18, 2013 - Day Weaving Study Group
1.30 pm
The home of Melanie Smith

From Fleece to Garment Study Group
See information in this Newsletter

Spinning Study Group

See information about Summer Spin-in Days

Beginning Weaving Study Group

We will not be meeting again, unless further interest is shown.

Knitting Study Group

We will meet again next Fall.

Membership Dues

It's time to think about paying your membership dues for the 2013-2014 season. It's just \$25.00 for a year's worth of inspiration, information, and fun. Bring to the June Picnic meeting or forward to me at 2118 Belle Aire, Nampa, Id. 83686. Thank you so much!

♦ Irene Chandler, Membership Chair

Summer Spin-in Events

Summer Spin-in dates have been set! This summer we are planning some fun spinning out-and-about dates. We will be having pot lucks at both the June and July events, as usual. We will not be able to bring food into the fair so plan on eating there.

* **June 29th** at the Sheep Shed 76 N Robinson Rd in Nampa from 11- 3,

* **July 27th** at Cassia Park 4600 W Camas St Boise, ID from 12-4

* **August 24th** at the Western Idaho Fair 10-4

If you would like to attend the Fair spinning day, please email Melanie so that you can be added to the list for tickets into the fair. Also, if you need directions to any of these events please email Melanie. Keep an eye on the yahoo group the week of the events for any possible changes.

Please bring a chair to the spinning days in June and July.

If you have any questions email Melanie Smith at yarnsntreads@aol.com



COE Judging - 2014

The Handweavers Guild of Boise Valley will be hosting the 2014 Certificate of Excellence judging for Weaving. The date has not yet been set, but it will happen in the Fall of 2014.

To make this a success, we will need many volunteers. Please think about what you can do to help out with this project. We will be talking about the positions that need to be filled and the other tasks that will need to be done over the next few months. If you have any questions or want to put your name on the volunteer list, let Vila know.

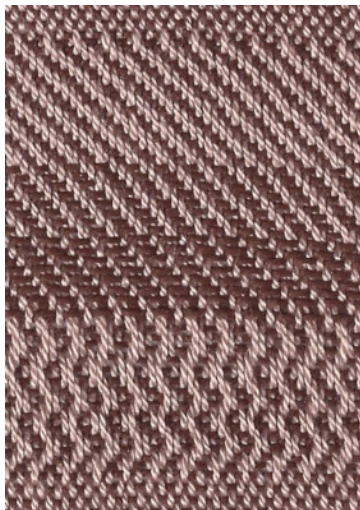
Stay tuned for more details!

◆ Vila Cox

June Sample Exchange

Julie Gerrard provided the weaving sample for this month. It is a 4 shaft straight twill that she has woven with different treadling/tie-ups. Warp faced, weft faced, and balanced twills, all from the same warp. Another wonderful example of the versatility of a warp, be it a twill or other structure. Don't limit yourselves, weavers.

◆ Al Hayden



Sample Exchange Box

Members may pull samples from the **Sample Exchange Box** at each regular guild meeting. And remember to check your name off the list in **each** file folder. If you would like to participate or have questions, contact the Sample Chairperson.

Also, remember, there are samples from last year that are available to anyone toward the back of the box.

Notes From Your President

Hope you are looking forward to the Annual Picnic, as I am. Always great food, sharing of handwoven things, ideas, and friendship. Also looking forward to seeing what the next year's board will have in store for us all. Have a wonderful summer.

◆ Your President, Mitzi Meyers

Guild Sale

Thank you all for another successful Guild sale. There were so many great goodies to choose from, from books, fiber, tools and yarn. We were able to raise over \$130 which is quite a bit better than last year. This was in large part due to a donation by Janet Holland. She shared with us several books and other equipment.

◆ Melanie Smith



Study Group News

♥ Spinning Study Group

See information about Summer Spin-in events on page 1.

♥ Certificate of Excellence (COE Study Group)

COE Study Group will be held at Kathy McGowan's house, 3496 Holl Drive, Eagle, before the regular meeting on **June 1** from 9:30 to



11:00. All are welcome. For information call Mary Berent, 939-8906.

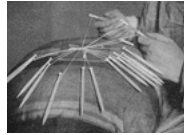
♥ Day Weaving Study Group

The day weaving study group will meet at Melanie Smith's on Tuesday, **June 18th**, at 1.30pm. If anyone needs information please call Anne Oglevie at 208 994 2725.



♥ Bobbin Lace Study Group

We meet on the second Tuesday of every month. In **June** it will be on the **11th**, at Rebecca's Studio House at 6:30 pm. Call Vila for information, 323-7736



♥ The Beginning Weaving Study Group

The Beginning Weavers Study Group will not meet again. Please contact Anne Oglevie if you are interested in continuing on with a study group at anneroglevie@gmail.com or 208 994 2725.

♥ Fleece to Garment Study Group

Our next step will be to talk about dyeing. Because of this we are going to take a bit of a break to wait for better weather. **A dye day will be planned in June or early July**, so check back for more information and a meeting date. If you have any questions please email Melanie Smith at yarnsntreads@aol.com



[Guild Meeting Minutes](#)

Regular Meeting - Adlemann House - May 4, 2013

Present: Janet Stanger, Pat Ann, Rebecca Winter, Katzy Luhring, Anne Oglevie, Carol Freeman, Kathy McGowan, Tera Jones, Mary Berent, Al Hayden, Ivy DeHart, Penny Schraufnagel, Kathy Shiflet, Judy

Tallent, Irene Chandler, Vila Cox, Nancy Swenson, Melanie Smith, Emma Smith, Mary Siedenstrang, Lynn Ruggles, Marita Turner, Pauline Robbins.

Meeting was called to order by VP Mary Berent. Mary announced the upcoming programs, today is the equipment sale and the picnic is next month at Kathy McGowan's house. It is pot luck and bring your UFO's.

Treasurer's report: Melanie Smith reports that after the work shop we have \$4,790.03 in Checking, \$4,508.33 in savings and 12,738.93 in the CD. She reports that Mary's workshop did not break even due to one of the ladies who paid could not attend due to a death in the family. Melanie will be refunding some of her money. We only lost \$39.00. Melanie also presented the budget to the membership for approval. Al Hayden made a motion to approve the budget and was seconded by Pat Ann. Motion carried unanimously.

Membership: Everyone was reminded that you can start paying your dues. They remain \$25.00 a year.

Librarian Judy Talent reports that she has purchased the hand woven magazine in CD. Mary reported a book called *Of Coverlets*, that was donated to the Guild, will be added to the Library for now. Pat Ann asked about the magazine Weavers Craft and why we don't subscribe to it. Lynn Ruggles explained we used to subscribe, but it became very irregular in its mailings. It was suggested that we buy the back issues as they are available. It was motioned by Rebecca Winter to purchase the back issues of the magazine that we do not have. Motion was seconded by Lynn Ruggles. The motion carried. It was clarified that the Guild would pay for this purchase, not the money from the Library budget.

Sample exchange: Al Hayden announced that today's sample was provided by Vila Cox. He also passed around a sign-up sheet for samples for next year.

ANWG: There was discussion of who was going to the conference to get together with those who need a ride. Rebecca announced that they have asked us to do the Conference in 2015. It was decided not in 2015, but maybe in the future. Those going are supposed to bring back information for us to decide later.

Show and Tell: Mary Berent showed a sample with a bunny using a pick up technique. Ivy DeHart showed some silk/rayon scarves that she had dyed. Irene Chandler showed some socks she had made using big yarn and a sweater she had crocheted using some Indigo dyed yarn. Vila Cox shared with us a 4 yard roll of bobbin lace she had made with one ball of thread, and 2 of the baby wraps that she makes. Nancy Swenson showed us pictures of the new spinning wheel she has purchased. Emma Smith



shared a scarf that she had finished.

Lynn Ruggles shared the notebook from her workshop and Rebecca Winter finished the notebook from Mary Berent's workshop. Carol Freeman announced that her jacket did not make the finals but they are going to feature the Jacket in the

Handwoven magazine. Tera Jones showed a top that she had knitted. Rebecca Winter shared some velvet samples she had made. Marita Turner shared a tie that she had knitted.

Mary Berent reminded us that we have volunteered to do the COE Evaluations in 2014. She described the process. Vila Cox is the Chairman and is requesting volunteers. This will be fall of 2014.

Study groups announced their upcoming schedules. See the Newsletter and the web site for specific group meeting times and places. The COE will meet prior to the Guild picnic at the home of Kathy McGowen.

Announcements: Al Hayden was approached by the Central Bench Neighborhood Association requesting guild members to demonstrate our craft. Spinning, weaving, beading, basketry, etc. This is June 8th if you can help contact Randy Harkelroad at 336-9973. It is in conjunction with the 150th anniversary of Boise.

UFO's Carol Freeman completed a vest; Irene Chandler finished an appliqué quilt top. Maritia Turner finished a knitted tie and Rebecca Winter finished a warp.

Gold Bag was won by Marita Turner, a variety of yarns.

Meeting adjourned for the annual yarn and equipment sale.

♦ Respectfully Submitted, Janet Stanger, Secretary

These minutes have been reviewed by the Board via email and have been approved as printed.

Officers and Chairs

President: Mitzi Meyers 340-9775

Vice-presidents: Mary Berent 939-8906

Rena Lute 891-2111

Secretary: Janet Stanger 377-0746

Treasurer: Melanie Smith 385-0085 or cell 608-0101

Membership Officer: Irene Chandler 318-8182

Librarian: Judy Tallent 208-615-1857

Web Master: Vila Cox 323-7736

Newsletter Editor: Rebecca Winter 859-2822

Sample Exchange: Al Hayden 343-7300

Spinning Study Group: Melanie Smith 375-9172

Weaving Intensive Study Group: Lynn Ruggles 375-9172

COE Study Group: Mary Berent 939-8906

Day Weaving Study Group: Anne Oglevie 208-994-2725

Beginning Weaving Study Group: Anne Oglevie 208-994-2725

Bobbin Lace Study Group: Vila Cox 323-7736

From Sheep to Garment: Melanie Smith 385-0085 or cell 608-0101

Knitting Study Group: Melanie Smith 385-0085 or cell 608-0101

Website

<http://www.handweavers-guild-boise.org>





Happy Holidays Challenge 2013

Held in conjunction with Museum Comes to Life
September 28, 2013

All entries must be entirely your own and created since September, 2012.
There is no limit to number of colors used. You will pick colors and design of
your project to best depict your Chosen Holiday.

Entry fee- \$5 first entry, \$2 for second, \$2 for third or more entries, for a
maximum of \$9.

Four Categories:

1. Flat Handwoven (yardage, hemmed or fringed items, such as scarves, dish towels, shawls)
2. Handspun Skeins (80% handspun; fibers must be identified)
3. Finished items from hand spun.
4. Fiber Arts (3 dimensional items, felted items, baskets, garments etc.)

A card will be attached to each entry after entries are submitted. Please
provide the following information with each entry:

1. Holiday Chosen
2. Weave structure for hand woven items
3. Fiber content and fiber samples for all entries.

Prizes for each category
\$50 First Place - \$35 Second Place - \$15 for Third Place

Registration is due by Saturday August 24 ----- Finished items are due by
September 21



Connecting Threads
PO Box 6258
Boise ID 83707

The monthly newsletter from the



handweavers guild of boise valley, inc.

[Newsletter Highlights and Please Remembers:](#)

[Annual Pot Luck and Picnic](#)

[Look for Information about the Summer Spin-Ins](#)

[Start Planning your Challenge Items](#)

