

# Connecting Threads



Handweavers Guild of Boise Valley  
March, 2012

## March Program: Silk Caps & Hankies

Bought a silk cap or hanky and not sure what to do with it?

The March program will show you how to prepare the caps and hankies for use, and share some tips on handling the notoriously sticky silk fiber.

Bring your own silk hanky and silk cap to work with, buy some from Merri, The Fiber Addict, or get some dyed samples to play with (\$2). If you want to spin it, bring your wheel or spindle. Bring knitting needles or a crochet hook if you want to try knitting or crocheting the silk. Or, just take the prepared fiber home for future use.

## Calendar of Events

March 3, 2012 - Guild Meeting

Boise Historical Museum at the Adelman House

11:30 am - Business Meeting

12:30 am - Social time

1:00 p.m. Program, Silk Caps and Hankies, by  
Merri Williams

Feb. 23 & Mar. 22, 2012 - Sock/Knitting Study Group

The Home of Melanie Smith

6:30 pm - 8:30 pm

March 13, 2012 - Bobbin Lace Study Group

Rebecca's Studio House, 1012 E 3rd St, Meridian

6:30 pm - 8:30 pm

March 8, 2012 - Spinning Study Group

Maralyn Larson's Clubhouse

6:30 - 8:30pm

March 19, 2012 - Day Weaving Study Group

Rebecca's Studio House

1:30 pm

April 7, 2012 - COE Study Group

Moxie Java, 1122 S Vista, Boise

9:30 to 11:00 am

March 23, 24 & 25, 2012 - Spinning Workshop

April 7, 2012 - Next Regular Guild Meeting

## Harriet Tidball's Categories of Plain Weave

During the program at the February meeting, a question arose about whether Basket Weave was, in fact, Plain Weave. Harriet Tidball, in her book The Handloom Weaves, 1984, outlines what she calls the Plain Weave Class, which is one of 8 Structural Weave Classes. The Plain Weave Class is further subdivided by her into 8 Plain Weave Systems. They include:

1. Tabby System
2. Warp Emphasis System
3. Warp Rep System
4. Weft Emphasis System
5. Weft Rep System
6. Basket Weave
7. Spaced Weave System
8. Log Cabin System

The other Classes of Structural Weaves are:

1. Twill
2. Twill Derivative
3. Unit
4. Grouped Thread
5. Double
6. Rhythmic
7. Gauze

I realize there are other more recent categorizations of weave structures, however, I personally gravitate to Tidball's.

♦ Your Editor, Rebecca Winter



## Monthly Sample Exchange

This month's Sample was provided by Jean Zaske. She chose her draft from Marguerite Davison's book A Handweaver's Pattern Book. It is the "Gothic Cross" pattern woven in Cotton for Kitchen Towels. Thanks Jean.

Samples will now be turned in to Al Hayden, the new Sample Chair. Many thanks to Rebecca for revitalizing and handling the Monthly Sample Exchange Program. Getting a new sample has always been something I looked for each month.

◆ Al Hayden



Members may pull samples from the **Sample Exchange Box** at each regular guild meeting. And remember to check your name off the list in each file folder. If you would like to participate or have questions, contact the Sample Chair.

Also, remember, there are samples from last year that are available to anyone toward the back of the box.

## Ramblings of the President

Today was a great day of spinning and visiting with the Garden Valley Fiber Freaks and other spinner friends in B-E-A-Utiful Crouch, Idaho! We are so awesome in that we all share information and mentor each other. Being a part of the group has made me a better weaver and spinner, among other things.

I am also excited one of our lovely members has volunteered to set up a Handweavers Guild Facebook page. Anyone that wants to can friend the group or "Like" it and it will spread the word about us and what we do. It will be fun to see this internet connection grow.

Thanks for all you do, even if that is only to be a participant in the meetings! Hopefully, if you haven't already, someday you will want to volunteer for a job.

◆ Thanks! >'< Your president, Mitzi



## Study Group News

### ♥ Spinning Study Group

We will meet at Maralyn Larson's playhouse on **March 8** from 6:30-8:30 pm. Color is Mud. Non-spinners welcome.

Thanks to everyone who adopted a sheep at the Garden Valley Spinning Event. We sent \$60 to Heifer International, which purchased half a sheep.



### ♥ Certificate of Excellence (COE) Study Group

The COE Study Group will meet **April 7** at the Moxie Java on Vista near the corner of Kootenai. All are welcomed. Contact Mary Berent for info: 939-8906.

### ♥ Day Weaving Study Group

We will meet on **March 19** at Rebecca's Studio House, 1:30 p.m. Call Rebecca at 859-2822, for more information.



### ♥ Bobbin Lace Study Group

We have **changed our meeting dates** to the second Tuesday of every month. In **March** it will be on the **13th**, at Rebecca's Studio House at 6:30 pm. Call Vila for information, 323-7736



### ♥ Sock/Knitting Study Group

Yes, you are seeing it right. There has been some interest in adding knitting to the sock group. So if you need help with any knitting project, sock included, you are welcome to come on **Feb. 23rd and March 22nd**. We meet from 6:30 to 8:30 at Melanie's home, 523 S. Pond St Boise. If you have any questions, please call Melanie Smith at 608-0101 (cell) or 385-0085.



## New Members

Welcome to our new members! Please add these names to your directories.

- ◆ Denyce Verti
- ◆ Anne Oglevie
- ◆ Donna Welch
- ◆ Tera Jones



## Guild Meeting Minutes

Regular Meeting 2/4 /2012  
Adelmann House

Meeting was called to order by President Mitzi Meyers.

Present: Janet Stanger, Melanie Smith, Judy Tallent, Rebecca Winter, Irene Chandler, Kimberly Brandel, Jean Zaske, Andrea Cooper, Christine Bagwell, Carol Freeman, Julie Gerrard, Ava Lutteman, Rena Lute, Mary Berent, Anne, Oglevie, Pat Ann, Penny Schraufnagel, Nancy Swenson, Vila Cox, Mitzi Meyers, Chris Farrin, Kathy McGowin, Lynn Ruggles, Al Hayden, Cynthia Newman, and Marita Turner.

After Introductions, Irene Chandler, Membership Chairman, reminded us that at the age of 75 the Guild makes you an honorary member and you do not have to pay membership dues anymore.

Vice President Mary Berent announces everything is going well; Julie Gerrard is doing Plain Weave for February's meeting. March's will be on weaving silk hankies and caps. The Ceilia Quinn spinning workshop in March is full they are taking names for the waiting list.

Vice President Rena Lute gave positive feedback on the intensive workshop that was presented in January. As a beginning weaver she learned a lot and it was not over her head. She really got a lot out

of the workshop and recommends it to everyone.

Treasures report: Melanie Smith states we have \$3,575.79 in checking.

Secretary: Janet Stanger reported that she had left her name off the January attendance record, from the Guild Board meeting, and is making a public correction and adding herself onto the attendance record.

Web site: Vila Cox reports that she has been contacted by a lady that has angora bunnies available. Vila is getting ready to put in an order for some cotton thread. If anyone is interested, they need to contact her.

Al Hayden is now in charge of the Sample Box. This month's sample is dyed Tencel by Al Hayden.

ANWG: Rebecca Winter reports that ANWG has extended it deadlines for teaching proposals for their 2013 Conference to the middle of February. Rebecca also reported that ANWG has a way of keeping track how many hits our web site gets in a month on their website, and we had in the range of 300 hits.

It was reported to the guild that Rebecca Winter was featured in the Jan/Feb, 2012, Handwoven magazine.

Show and Tell: Jean Zaske, showed hand woven towels. Irene Chandler - a blanket.

Rebecca Winter - samples from the Star workshop, Melanie Smith - samples, Lynn Ruggles samples. Lynn also said she had been asked to review a book, Learn to Spin, by Ann Field. She stated she liked the book and she donated it to our guild library. Kathy McGowen - wool appliqué and a knitted baby outfit, Mitzi modeled a shawl she knitted, Vila showed a scarf she has been asked to recreate and make 100 of. Nancy Swenson - yarn she had spun, Pat Ann shared yarn she had plied with thread. She also shared some socks that had been knitted by Judy Banduchi. Carol Freeman showed a Jacket she had made, and Chris Farrin shared a lap loom that she had used as a child in Germany.





Challenge Chairman Julie Gerrard announced the protocols for the Challenge. There will be 4 categories. There will be a descriptive card that will accompany the entry. Fliers are available in the Newsletter. Entry fee is \$5.00 for the first entry. \$2.00 for each entry after until a max of \$9.00 total. Additional entries after that are at no fee. You can enter as many as you like. The theme is Color Explosion.

Mary Berent, Chair of the Nominating Committee, presented the slate of officers for next year. Mitzi Meyers for President, Melanie Smith for Treasurer, Janet Stanger for Secretary, Irene Chandler for Membership. The nominated Vice Presidents are Mary Berent and Rena Lute.

Intensive is over for the year 2012. Everyone that went had a good time. Lynn Ruggles will be chairman for 2013. The theme will be Summer and Winter. It is a 3 day, teacherless workshop that costs about \$30.00. It is a great way for a new weaver to learn without the pressure.

Study groups announced their next meeting days. Day Weaving will be the 3<sup>rd</sup> Monday at Vila's home. Spinning group will meet this Thursday at Marylyn's club house 6:30 to 8:30. The color of study is winter white. Bobbin Lace is the 1<sup>st</sup> and 3<sup>rd</sup> Tuesdays at Rebecca Winter's studio. 6:30 to 8:30.



The sock study group meets the 4<sup>th</sup> Thursday at Melanie Smith's home. COE met this morning so it will meet again in April. The Garden Valley Winter

Blues Spin in is coming up 2/5/2012. It will be held in the community center.

UFO Rebecca finished more of her star samples and Carol Freeman had a Jacket she finished.

Lynn Ruggles won the gold bag. It was filled with a variety of virgin wool.

Meeting was adjourned for the monthly program. Julie Gerrard will be presenting Plain Weave.

◆ Respectfully submitted, Janet Stanger, Secretary

### Spiders! Eek!

In a recently published issue of Weaving Today, in their "Beweave It!" section, February 15, 2012, I found the following article. Anyone want to be a spider wrangler?

"Spider silk is strong as high grade steel, can withstand extreme temperatures, and is incredibly light—a single strand of spider silk long enough to circle the globe would weigh only 18 oz.

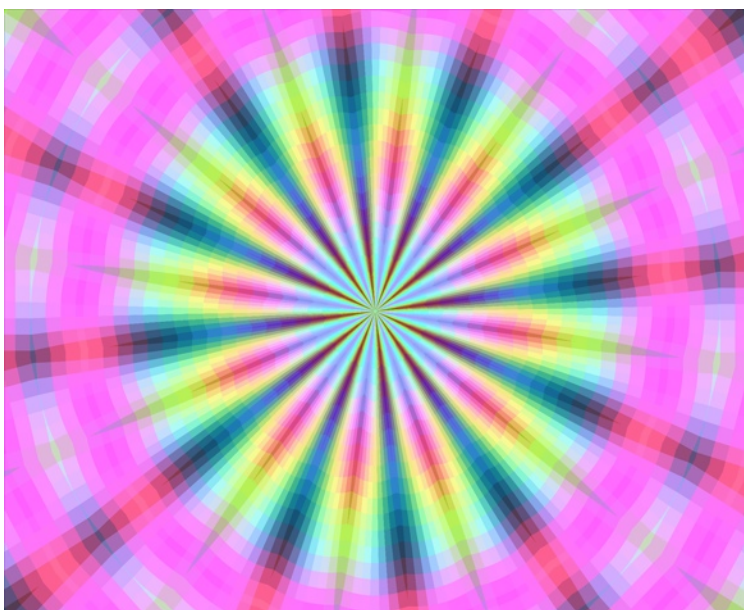


Unfortunately, spiders can't be "farmed" because their silk is hard to harvest, and because spiders are territorial and cannibalistic. But University of Wyoming professor Don Jarvis and Utah State University professor

Randy Lewis recently announced that they've successfully bred silkworms to produce silk that is 5% spider silk. This new natural polymer, dubbed "monster silk," is produced by inserting spider genes into silkworm eggs and breeding the offspring together to create a generation of silkworms that have the capability to produce spider silk. If silkworms can eventually be bred to produce 100% spider silk, commercially harvested spider silk could be used for applications such as ultra-light airplane parts or body armor that's light and soft as silk and stronger than Kevlar."

◆ Enjoy, Your Editor





## 2012 Challenge Color Explosion!!!

Use at least 3 colors for each item.  
Select a color harmony for each item.  
All entries must be entirely your own,  
and created since September, 2011.

### Four Categories:

1. Flat Handwoven (yardage, hemmed or fringed items such as scarves, dish towels, shawls).
2. Handspun Skeins (80% handspun) (fibers must be identified)
3. Finished Items for Handspun (50% handspun) (fibers must be identified)
4. Fiber Arts (3-dimensional items, felted items, baskets, garments)

Entry fee - \$5 first entry, \$2 for second, \$2 for third or more entries for a maximum of \$9.

A card will be attached to each entry after entries are submitted. Please plan to provide the following information with each entry:

1. Color harmony chosen
2. Weave structure for handwoven entries
3. Fiber content for all entries

### Officers and Chairs

President: Mitzi Meyers 340-9775  
Vice-presidents: Mary Berent 939-8906  
Rena Lute 891-2111.  
Secretary: Janet Stanger 377-0746  
Treasurer: Melanie Smith home 385-0085 cell  
608-0101  
Membership Officer: Irene Chandler 318-8182  
Librarian: Judy Tallent 208-615-1857  
Newsletter Editor: Rebecca Winter 859-2822  
Sample Exchange: Al Hayden  
Weaving Intensive Study Group: Vila Cox 323-7736

Spinning Study Group and Weaving Intensive Study  
Group: Lynn Ruggles 375-9172  
COE Study Group: Mary Berent 939-8906  
Day Weaving Study Group: Rebecca Winter  
859-2822  
Bobbin Lace Study Group: Vila Cox 323-7736  
Web Master: Vila Cox 323-7736  
Past President: Cynthia Newman (541) 523-2451

Website  
<http://www.handweavers-guild-boise.org>

Note: This Newsletter is located online at this address.

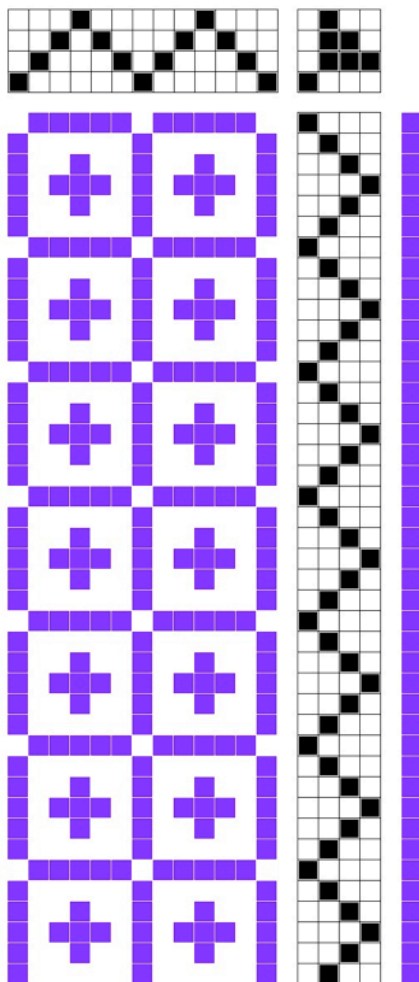
## Al's Bookmarks -- The Full Story

by Al Hayden

I wanted to weave something for each of my nephews (my boys), their wives and the great-nephews/nieces. But, what would be fitting for an age group of 9 to 40+? And the two oldest greats are both now in the Marines. I really wanted something personal, but as connected as the family is, I finally decided on silk bookmarks for their Bibles. I know they each have one, which they faithfully read and study.

I played with a 4-block point twill "Profile Draft" and with different tie-ups and treadlings came up with a dozen patterns. I then expanded the profile draft with the weave structure of 'satin.' All of the bookmarks were woven on one warp and one structure and then each dyed in one of the colors of the twelve step color wheel. Each different but connected from end to end and also in a continuous circle.

Here is the next in the series of drafts from Al. Another four harness point threading. The yarn is silk.

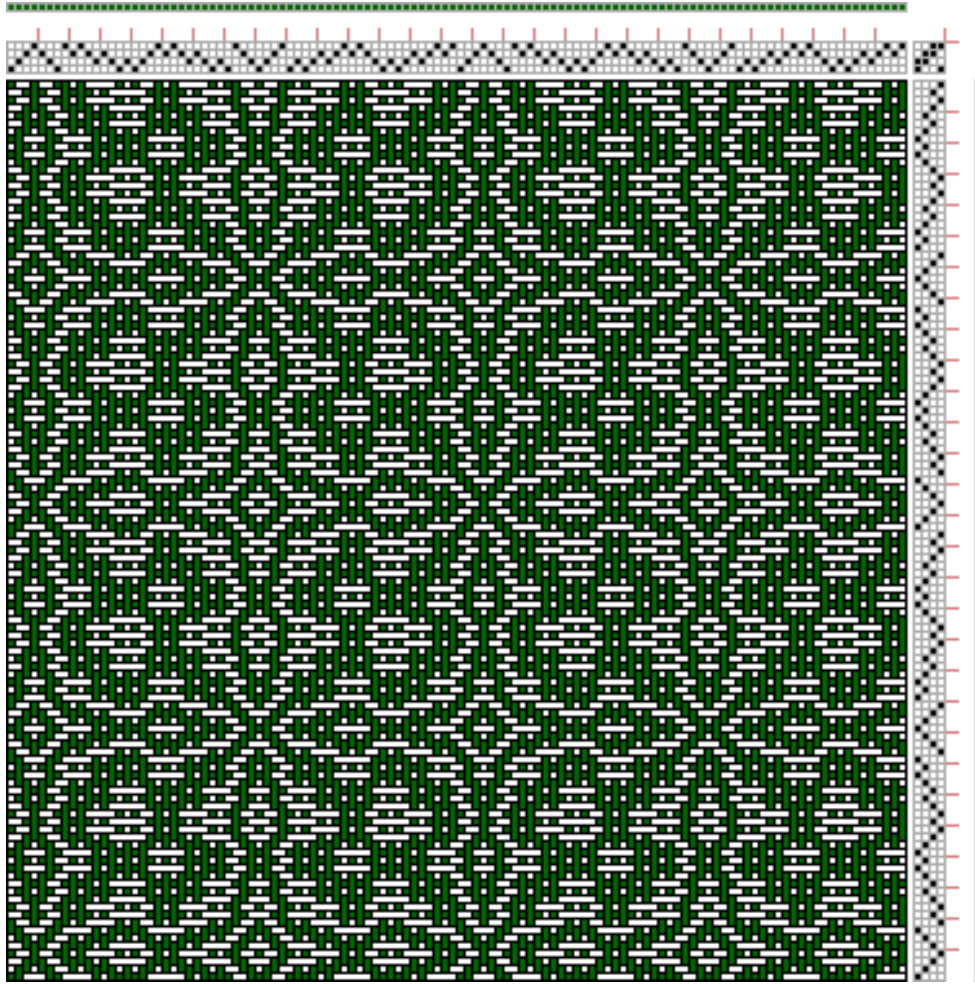


Detail

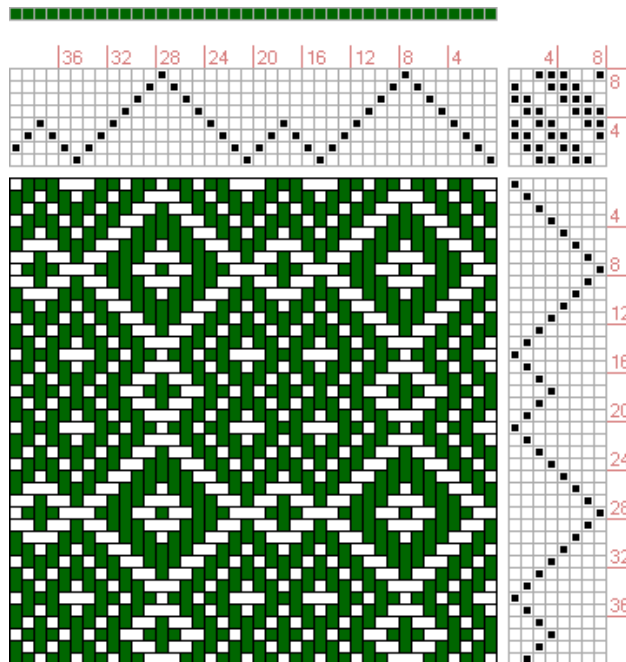
## Draft Inspiration

Here are a couple of drafts from <http://www.handweaving.net> You can go there and enter the number to see all the specifics about each draft, as well as download a .wif file. A little wearin' o' the green.

Draft #63035



Draft #63051



Connecting Threads  
PO Box 6258  
Boise ID 83707

The monthly newsletter from the



handweavers guild of boise valley, inc.

## Newsletter Highlights and Please Remembers:

March Program: Silk Caps & Hankies

Start Thinking About Challenge 2012

