



Connecting Threads

Handweavers Guild of Boise Valley
March, 2013

March Program: Getting Started with an Inkle Loom, by Lynn Ruggles

An Inkle loom is used to weave belts or straps using a warp faced weave. You will learn how to set up a loom, how to tension the loom, and how to weave on the loom. Card Weaving and Belt Weaving will also be demonstrated, but will not be discussed in detail. If you have an Inkle loom but haven't used it, now's your chance to find out how it works!

Calendar of Events

March 2, 2013 - Guild Meeting
Boise Historical Museum at the Adelman House
11:30 am - Business Meeting
12:30 am - Social time
1:00 p.m. Program:
Getting Started with Inkle, by Lynn Ruggles

March 2, 2013 - Board Meeting
10:00 am
Moxie Java, 1122 S Vista, Boise

March 2, 2013 - Beginning Weaving Study Group
Boise Historical Museum at the Adelman House
Immediately after the Regular Meeting

March 12, 2013 - Bobbin Lace Study Group
6:30 pm - 8:30 pm
Rebecca's Studio House

March 14, 2013 - Spinning Study Group
6:30 pm - 8:30 pm
Maralyn's Clubhouse

March 19, 2013 - Day Weaving Study Group
1:30 to 3:30 pm
Lynn Ruggles' Home

March 23, 2013 - From Fleece to Garment Study Group
11:00 am
Melanie Smith's Home

February & March - Knitting Study Group
Will not be meeting

April 6, 2013 - COE Study Group
9:30 to 11:00 am
Moxie Java, 1122 S Vista, Boise

Spinning Workshop - February 23, 24, & 25, 2013
Weaving Workshop - April 27, 28 & 29, 2013

Wanted: 1 Inkle Loom for demonstrating at the program. Please contact Lynn: 375-9172 if you have one I can use.

Board Meeting Reminder

There will be a board meeting before the regular March 2nd meeting at Moxie Java, Kootenai and Vista, 10 am.

Sign Up Now!! Weaving Workshop



While Lynn's workshop is full, there is still room in Mary's Weaving Workshop. Take advantage of the lower cost workshops this year. See the workshop information sheet in this newsletter. Both of these teachers are recognized national teachers and both write for the magazines you all know and love--*Spin-Off* and *Handwoven*!! Because we are lucky enough to have these talented teachers in our own guild and don't have to pay transportation expenses for these workshops, the workshops are more economical than you will ever find them again.

Don't miss this opportunity.

Don't wait to register, the workshop is filling fast!!



Notes From Your President

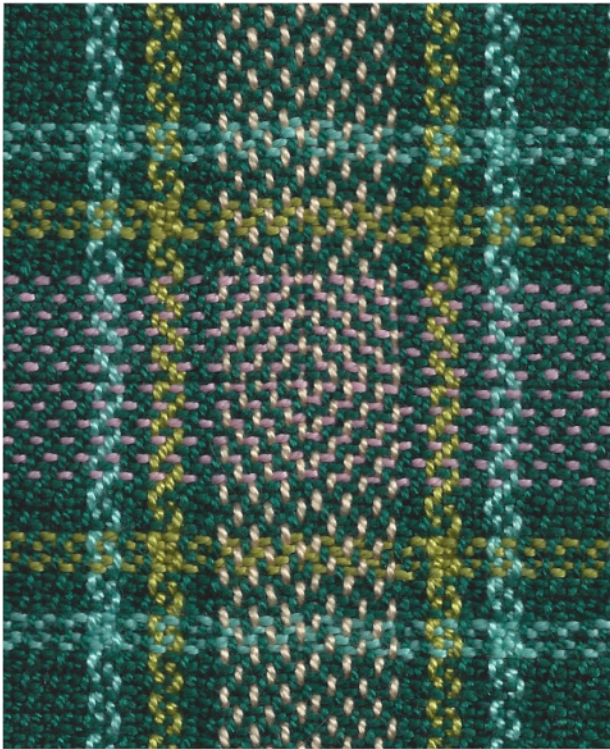
The president is thinking about SPRING! Yesterday was a B E A Utiful day in Idaho ... 52 degrees and sunny. I am always ready for warmer weather, but this year it is especially true. The sad part about better weather is I don't seem to get to the looms as much 'cause I want to be outside. I guess that means I should get to weaving right now! Hope you are all empowered to weave, spin, or whatever your heart desires today. Thanks for all you all do to contribute to our inspiring group!

❖ Your President, Mitzi Meyers

March Sample

This month's sample is from Rebecca Winter. It is her Logo Fabric - a combination Color-and-Weave draft. Of course it has stars, and there is a spiral in the center, symbolizing the spiral of life.

❖ Al Hayden



Sample Exchange Box

Members may pull samples from the **Sample Exchange Box** at each regular guild meeting. And remember to check your name off the list in **each** file folder. If you would like to participate or have questions, contact the Sample Chairperson.

Also, remember, there are samples from last year that are available to anyone toward the back of the box.

Membership

How exciting to welcome another new member to our Guild. Elizabeth Jeffrey from Boise. Welcome, Elizabeth!



Looms For Sale

4 Harness Schacht Table Loom
20" weaving width 8 dent reed
In very good condition. Asking \$250.00.
Call or email Judy @ 861-2732 or
jbanducci2223@gmail.com

12 Harness Lelerc Nilart
60 inch weaving width, with rear-hinged treadles
2 beams, one of which is sectional
Includes several reeds, bench,
one spool rack and tension box
Asking \$4600.00

Previously owned by Fern Hrdlicka, a wonderfully eccentric member of the Guild in the early years
Contact Rebecca at 859-2822, or
becwinter@earthlink.net

Tapestry Study Group Forming

There is some interest in forming a tapestry study group. Anyone who would like to participate contact Lynn Ruggles. She has the name of someone who may offer to lead the group.

***The latest on this group is that there is a rumor it will begin in June.

Study Group News

♥ Spinning Study Group

The spinning study group will meet on **March 14th** at Maralyn's Club house in Meridian, from 6:30 - 8:30 PM



The theme this month will be Irish Green. So please bring your spinning, knitting, bobbin lace or any other project you would like to work on. We will also be talking about ideas for this summer's spinning days. If you need directions please email Melanie Smith at yarnsnthreads@aol.com

♥ Certificate of Excellence (COE) Study Group

The COE Study Group will be held on **April 6**, 2013, at 9:30 a.m. at the Moxie Java on Vista in Boise. As usual, everyone is invited. For information call Mary Berent, 939-8906.

♥ Day Weaving Study Group

The Day Weavers Study Group will meet on a new day Tuesday **March 19th** at 1:30pm at the home of Lynn Ruggles. Please call Anne Oglevie for any additional information.



♥ Beginning Weaving Study Group

The beginning weavers group will meet after the regular meeting and program on **March 2**. Nancy Swenson will lead the study group on Twills.

♥ Bobbin Lace Study Group

We meet on the second Tuesday of every month. The next meeting will be **March 12**, at Rebecca's Studio House at 6:30 pm. Call Vila for information, 323-7736



♥ Knitting Study Group

There has been a bit of a schedule change. I have a family events on Feb. 28th and also in March 28th. So **we will not be having the study group**. If you have any questions please email Melanie at yarnsnthreads@aol.com



♥ Fleece to Garment Study Group

Combing and carding meeting for **March 23rd** starting at 11 AM at Melanie

Smith's home. We will be talking about how to use combs, a drum carder, hand cards, flickers and dog combs. I also have copies of the new interweave DVD's on combing and carding if you would like to watch and get some tips for better batts and rovings. If you would like to play around with some fleece that you have at home that is clean and ready to go please bring it. Also if you need some fleece to play with please email me and I will have some ready for you. If you have any questions please email Melanie at yarnsnthreads@aol.com



Guild Meeting Minutes

Coming next Month

Officers and Chairs

- President: Mitzi Meyers 340-9775
Vice-presidents: Mary Berent 939-8906
Rena Lute 891-2111
Secretary: Janet Stanger 377-0746
Treasurer: Melanie Smith 385-0085 or cell 608-0101
Membership Officer: Irene Chandler 318-8182
Librarian: Judy Tallent 208-615-1857
Web Master: Vila Cox 323-7736
Newsletter Editor: Rebecca Winter 859-2822
Sample Exchange: Al Hayden 343-7300
Spinning Study Group: Melanie Smith 385-0085
Weaving Intensive Study Group: Lynn Ruggles 375-9172
COE Study Group: Mary Berent 939-8906
Day Weaving Study Group: Anne Oglevie 208-994-2725
Beginning Weaving Study Group: Anne Oglevie 208-994-2725
Bobbin Lace Study Group: Vila Cox 323-7736
From Sheep to Garment: Melanie Smith 385-0085
Knitting Study Group: Melanie Smith 385-0085

Website

<http://www.handweavers-guild-boise.org>

Note: This Newsletter is located online at this address.



Notice: Our Secretary, Janet Stanger, has recently been ill. We wish her a speedy recovery and that she soon returns to many happy hours of fiber arts. ♦ Your editor



Some pics from the Summer & Winter Weaving Intensive, held on January 19, 20, & 21.



- 1. Snowy Winter Weather
- 2. Ivy's loom
- 3. Al's Loom
- 4. Rebecca's Loom
- 5. Pat's Sample



Mary Berent Supplementary Warp Workshop

a Weaving workshop sponsored by the Handweavers Guild of Boise Valley
Saturday, April 27; Sunday, April 28; and Monday, April 29, 2013

Mark your calendars for three days of fast paced weaving, fun and learning! This workshop will get you thinking about what you can do with your loom in a whole new way.

Supplementary warp, or supplemental warp is a technique that opens a world of fabulous design possibilities. It allows the weaver to plan complex patterns that can be woven with 8 or fewer shafts and with only one shuttle. It allows for various tensions within the same warp, allowing some very interesting effects. Once weavers allow themselves to think differently about warp tension, the design possibilities are limitless. Many designs that LOOK complex are explained and turned weaves are explored. This is a round-robin workshop using 4 and 8 shaft looms.

The workshop will be held at the Caldwell Public Library Community Room. You will need to bring a loom warped according to instructions, weft yarn for that loom, shuttle(s) for that loom, basic weaving equipment (threading hook, scissors, tapestry needle, paper and pencil for note taking, masking tape, etc.) and your lunch each day. The cost of the workshop is \$95 for members of the Handweavers Guild of BoiseValley, with an additional materials fee of \$20 for a total of \$115 for the three day workshop. The total fee for non-Guild members is \$140 and includes membership in the Guild. This will be three fantastic days of weaving fun!

Name _____ email address _____

Phone _____ cell phone _____

To register send a check for the full amount to: Rena Lute, 2273 W Burns Street, Eagle, Idaho 83616, cell 891-2111.



Connecting Threads
PO Box 6258
Boise ID 83707

The monthly newsletter from the



handweavers guild of boise valley, inc.

Newsletter Highlights and Please Remembers:

Board Meeting: March 2

March Program: Getting Started with an Inkle Loom, by Lynn Ruggles

Sign up for the Weaving Workshop, by Mary Berent

