

Connecting Threads



Handweavers Guild of Boise Valley
March - 2015

March Program - Rug Punching by Mitzi Meyers

It will be such fun to present rug hooking using an Amy Oxford punch needle this month! I will bring the rug I made last year (some of you have seen it), Daisy the doorstop, and current rugs I am working on. The current project is on a frame with a stand that is made for rug hooking, and I will demonstrate how it is done. There will also be another "hooker" with a few things to show.

•Mitzi Meyers

Calendar of Events

- March 7, 2015 - Guild Meeting
11:30 am - Business Meeting
12:30 am - Program - **Rug Punching, Mitzi Meyers**
Rebecca's Studio House, 1012 E. Third St., Meridian
- March 12, 2015, 2015 - Spinning Study Group
6:30 pm - 8:30 pm
Maralyn Larson's Clubhouse
- March 14, 2015 - COE Celebration for Cynthia Newman
12:30 pm
The Home of Anne Oglevie
- March 17, 2015 - Day Weaving Study Group
1:30 pm - 3:30 pm
Location TBA
- April 4, 2015 - COE Study Group
10:00 to 11:00 am
Rebecca's Studio House
- March 28-30, 2015 - Designing Full Circle
A Weaving Workshop by Mary Berent
- April 24, 25, 26, 2015 - A Spinning Workshop, Spinning
Fibers of the Scottish and Yorkshire Wool Trade: Wool,
Mohair, Cashmere and Alpaca
by Carol Rhoades of Madison Wisconsin
- June 13, 2015 - ANWG Annual Membership Meeting

Handweaver's Guild of Boise Valley Receives Golden Shuttle Award



Handweaver's Guild of America

The *Shuttle Spindle & Dyepot* says, "Given in recognition of contributions and services provided to the Handweavers Guild of America, Inc., the Golden Shuttle is awarded to the Handweavers Guild of Boise Valley, Boise, Idaho, and the ... members of the Certificate of Excellence (COE) Host Guild Committee who have contributed in a variety of ways to make the 2014 COE in Handweaving a success." (Winter, 2015, page 53)

Museum Comes To Life

We have heard from the Museum and there will be a Museum Comes to Life in September, 2015. Therefore, the Challenge is on. The theme continues to be The Tale of Two Fibers. More details will be available at the next meeting. See the information on page 4.

•Janet Stanger, Chair





*You are cordially invited to a
luncheon in honor of
Cynthia Jack Newman
to celebrate her achievement of
Certificate of Excellence in
Weaving, Part 1
given by the
Handweavers Guild of America*

*At the home of Anne Oglevie
30 Hill Road
Weiser, Idaho 83672
March 14, 2015, 12:30 pm
208-642-3045*



From Your President

President's musings:

I am writing this in Western Australia on the south coast, at my brothers farm.....not sheep but cattle unfortunately! Although he has a neighbor and friend that does have merinos, and I have been given a fleece that is on its way home. I have also attended the local spinning group in the town of Denmark. Most of them spin in the grease and it seems to be more a social gathering of ladies about my age! There are a couple of weavers in the group and they drive to Albany about 25 miles away to weave on looms that are in an arts center. Their guild owns the looms and the building is free for them to use with many more artists. It is the old hospital, circa 1918, which has been converted for their use.

I am enjoying the wonderful hot weather and the cold ocean. I look forward to being home and seeing you all at the next Guild meeting. Woven together,

◆ Anne Oglevie, President

Membership

What a nice meeting we had on February 7th, although we missed all the members that were not able to be there. I especially enjoyed getting reacquainted with Kim Severns from Nampa, who was a member several years ago. She has promised to rejoin in April, and we look forward to learning more about her weaving and spinning interests. Hope you are all getting lots done this winter. I finally finished a two-year long UFO. What a relief! See you in March.

◆ Irene, Membership Officer

February Program

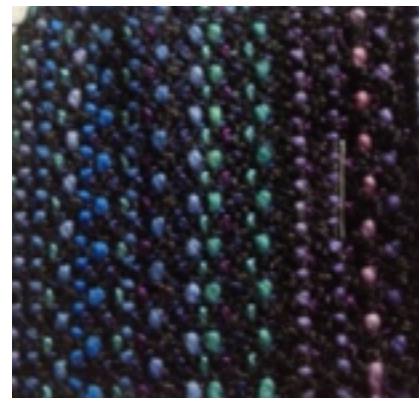
Thank you, Vila, for helping us understand "Leno." Your February Guild Program with your samples, handouts and explanations helped us see how adding the Leno twist can be accomplished by hand-manipulated or loom-controlled weaving. Having your recommended book, "Finishing Touches for the Handweaver" by Virginia M. West and your handouts encourages me to incorporate Leno into an upcoming project.

◆ Kathy Shiflet, Vice President

March Sample

This month's sample has been woven by Kathy McGowan. It is a 4 harness twill made from a variety of warp yarns: tencel, wool and sock yarn. The weft is black 8/2 tencel. This weave would be appropriate for scarves. As you look at this fabric the turquoise, blue and mauve peak through the black to create a pleasant fabric.

◆ Greta Ankeny,
Sample Exchange Chair



Sample Exchange Box

Members may pull samples from the Sample Exchange Box at each regular guild meeting. And remember to check your name off the list in each file folder. If you would like to participate or have questions, contact the Sample Chairperson.

Also, remember, there are samples from last year that are available to anyone toward the back of the box.

Al Hayden's New - New Contact Information

Address: 23713 Old River Road
Vanceleave, Mississippi 39567
Phone: 1-228-217-0908
Email: Cjate1982@gmail.com

Spinning Study Group

Let's Make a Deal!

This month, we are once again planning something a bit different for our monthly meeting. We are holding a *Let's Make a Deal*. You are encouraged bring any fibers or yarns that you have in your stash that you would like to trade or give away. This is not a sale, but a trade. If you have fiber or yarns that you would like to sell, please save it for the guild sale in May. The plan is to have each person to work out the trade deals between the two parties. If you don't have any fiber to trade or don't plan to trade any, no problem! You are still very welcome to come and spin or visit. We will be meeting on March 12 from 6:30 to 8:30 pm at Maralyn's club house. If you have any questions, please let me know. Melanie Smith yarnsntreads@aol.com or 608-0101

◆ Melanie Smith, Chair

Bobbin Lace Study Group

The Bobbin Lace Study group will be taking a break for a few months. When interest is rekindled or new people want to join, we will start up again.

At that time we will look at the meeting day and see if there is a better day of the month for most of the participants.

◆ Vila Cox

Advertisement: Vintage Flax Wheel For Sale

This is a small antique flax wheel, complete with flyer and distaff, but missing a bobbin and whorl. This would most likely be only a display piece. An antique appraiser said it was worth \$160, but Pat is willing to consider any offers. Contact her at 284-8767.



UFO Program (Un-Finished Object)

- ~ Dig out those un-finished projects that are taking up needed space.
- ~ Same Rules
- ◆ Bring the unfinished object to a regular meeting and give a short explanation.
- ◆ Fill out a short form registering your intensions.
- ◆ Then bring the finished thing-of-beauty to a regular meeting.
- ◆ And collect your rewards.

◆◆ Kathy Shiflet, Vice President

Study Group News

♥ Certificate of Excellence (COE) Study Group

COE Study Group will meet **April 4**, 10:00 am at Rebecca's Studio House before the regular meeting. All are welcome; for more information call Mary, 939-8906.

♥ Spinning Study Group

March 12th spinning study group will be meeting at Maralyn's Clubhouse. If you have any questions or need directions please email Melanie at yarnsntreads@aol.com

♥ Day Weaving Study Group

Day weaving will be held on Tuesday **February 17th** at 1.30pm at the home of Vila Cox. All are welcome please call Vila for information.



Officers and Chairs

President: Anne Oglevie
208-994-2725

Vice-presidents: Pat Ann
208-337-2126

Kathy

Shiflet 208 830-9698

Secretary: Janet Stanger 377-0746

Treasurer: Melanie Smith 385-0085 or cell
608-0101

Membership Officer: Irene Chandler
318-8182

Librarian: Judy Tallent 208-615-1857

Web Master: Vila Cox 323-7736

Newsletter Editor: Rebecca Winter 859-2822

Sample Exchange: Greta Ankeny 318-6028

Spinning Study Group: Melanie Smith
385-0085

Weaving Intensive Study Group: Mary
Berent 939-8906

COE Study Group: Mary Berent 939-8906

Day Weaving Study Group: Anne Oglevie
208-994-2725

Bobbin Lace Study Group: Vila Cox
323-7736

Website

<http://www.handweavers-guild-boise.org>

Tail of Two Yarns

This is a tail of two different yarns that joined together to make a beautiful finished piece. The two (or more) yarns that gathered together were of different pedigrees.

Some were LARGE
some were small.

Some were from one kind of plant
some from another kind.

And then there were those from various critters.

In each finished piece there was a something from two different pedigrees. Two different sizes of one or more fibers

Or

Two different fibers
(two plants)

or

(two critters)

Or

(one plant and one critter)

The same tail goes for those crafty spinners. Two different sizes of one or more fibers

Or

Two different fibers
(two plants)

or

(two critters)

Or

(one plant and one critter)

Plied, Cabled, Blended or whatever else may apply.

The Fine Print

The two different yarns need to be easily seen

Made by you this year (Nov 2014 - Sept 2015) Short pieces of each yarn to be supplied with finished item Same for spinners (yarn/fiber)

Challenge 2015



*We are pleased to present our own Mary Berent, Master Weaver
For the Spring, 2015 Workshop — A three day event, March 27 - 29*

DESIGNING FULL CIRCLE

This workshop will concentrate on design as an entire process; each segment of the circle contributes to a well-designed item. We will start the design process from many points in the process, but always come full circle to complete the design. The workshop will cover proportion of patterns and fibers, color theory and how working with yarn is different from mixing paint colors, how value and optical illusions can work for you, and how to effectively use interesting fabric structures. This will be a lively workshop with lots of variety and options.



Participants will bring a loom pre-warped to specific instructions. Each loom will be a different color and there will be a variety of structures to provide an opportunity for “round robin” samples experimenting with various colors, values and textures on the looms. Weave structures will also be covered and if computers can be available for those interested in learning more about computer drafting and the possibilities that opens.

This workshop is intended to be fun as well as informative! We will have three VERY full days of learning and designing, so come with all your questions and problems and we’ll have a three-day design adventure!

This workshop is intended for beginning to intermediate weavers (those who can warp the loom from written instructions and who understand basic drafting). Participants will come with looms pre-warped.

Bring: Pre-warped loom, scissors, other small loom stuff, pencil, paper, shuttles for your loom that will stay with your loom, all sorts of weft yarn for experimenting on your loom and other looms, a mug (not paper), and a cone or skein of yarn you would like to use in a design project. You may wish to bring a chair or stool for more comfortable weaving at table looms.

Optional: Bring a sewing pattern or large picture of something you would like to design fabric for or other design challenges.

Mary will provide the drafts by mail ahead for threading the looms, a notebook with about 36 pages of handouts, and a willingness to teach.

<http://www.mary-berent.com/designing-full-circle-workshop.htm>

DESIGNING FULL CIRCLE

A Workshop by Mary Berent

March 27-29, 2015

- ❖ Members may reserve their place in this workshop by paying the fee of \$120.00.
- ❖ This includes a \$ 20.00 fee for binder and handouts.
- ❖ Non-members must add \$25.00 membership fee, and you will also be a member for the year & have member rates for additional events.
- ❖ Class size will be held to 20 persons.
- ❖ You may fill out the form below and give your payment to:
 - * Pat Ann or Kathy Shiflet
 - * Contact information is in the directory.
 - * Or call 208-337-2126 for more information.



Name: _____

Address: _____

Phone & email: _____

Type of loom you will use: _____



SPINNING FIBERS OF THE SCOTTISH AND YORKSHIRE TRADE: WOOL, MOHAIR, CASHMERE AND ALPACA

HANDWEAVERS GUILD OF BOISE VALLEY

April 24, 25 & 26,
2015

9:00am - 4:00pm

Location:
Rebecca's Studio
House
1012 E. Third Street
Meridian 83642

Fee: \$160.00

Includes Materials Fee

Instructor:
Carol Rhoades

Carol Rhoades, Madison, Wisconsin, has been spinning for almost 40 years. She is most interested in primitive wools and the knitting traditions connected with them. She has researched sheep, wool and knitting traditions in the U.K. and Scandinavia. Carol has published many articles, including project designs, in *Spin-Off*, particularly for the *Fiber Basics* and *Spinning Basics* columns. Her articles about historical textile traditions and her designs have been featured in *PieceWork*, *Knitting Traditions* and *Crochet Traditions*. Carol has taught handspinning, knitting and crochet classes around the U.S., in the U.K., Scandinavia and New Zealand. In addition, she has translated numerous knitting, crochet, weaving books into English from the Swedish, Danish and Norwegian.

Scotland and Yorkshire have long been centers of the U.K.'s wool trade. Several important sheep breeds originated in those areas as did many of our favorite knitting traditions. Lately there has been a resurgence of interest in traditional wools and some exciting British wool yarns are now on the market.

Each day, we will focus on one or two wools and a luxury fiber. After a general introduction to the fiber animal and the fiber, we will experiment with various ways to prepare and spin the fibers. The day will finish with spinning to match commercial yarns and for projects typically made with the day's fibers.

Day 1: Cheviot wool and alpaca; hand carding and woolen spinning

Day 2: Wensleydale, Bluefaced Leicester and mohair; lofty worsted style spinning

Day 3: Shetland and cashmere; woolen preparation and spinning with Shetland fleece and cashmere batts; lofty worsted style spinning with commercially prepared tops

\$25.00 materials fee includes: Handout folder, washed wool fleece and commercially prepared fibers, mohair, alpaca and cashmere for spinning alone and in blends.

ADDITIONAL SPINNING WORKSHOP INFORMATION

- **SKILL LEVEL:** Basic spinning skills are required
- **CLASS TIME:** 3 Days – 6 hours class time per day -
9:00 am to 4:00 pm includes lunch break
- **CLASS SIZE:** Maximum 20 students

STUDENTS BRING:

- Spinning wheel in good working order
- Handcards for wool
- Extra bobbins, ball winder or index cards to hold singles for plying
- Notepaper and pen
- Optional, if on hand: flick carder; contrast cloth (black on one side, white on the other)

Members may reserve their place in this workshop by paying the fee of \$160.00 which includes the Materials Fee.

If a non-member wishes to be included in this workshop, they must add \$25.00 membership fee and will be a Guild member for the year and be entitled to member rates for additional events.

**Please return this form with your Workshop Fee of \$160.00 to:
Kathy Shiflet, V.P., 2564 N Waggle Place, Meridian, ID 83646
(Make checks payable to HGBV)**

Name _____
Address _____
Phone _____
E-mail _____

Guild Regular Meeting Minutes

2/7/15

At the Studio House

Present: Janet Stanger, Cindy Schafer, Rebecca Winter, Cynthia Newman, Kim Severns, Kathy McGowen, Pat Ann, Katzy Luhning, Ivy DeHart, Vila Cox, Penny Schraufnagel, Julie Gerrard, Carol Freeman, Lynn Ruggles, Greta Ankeny, Melanie Smith, Irene Chandler, Nancy Swenson, and Mitzi Meyers.

Vice President Kathy Shiflet opened the meeting in the absence of President Anne Oglevie. Introductions were made. It was announced that there were 12 looms at the Intensive with Various Twills. Anne Oglevie will be Chairman for next year's intensive and the subject will be Huck Lace.

Vice President, Pat Ann, reminded every one of the up coming Workshops. Mary Berent's Workshop, in March, is on Designing Full Circle. The Spinning workshop, by Carol Rhodes, is on Scottish Sheep Breeds, and Rebecca Winter's workshop next Fall is on Shadow Weave. Today's Program will be Vila on Leno Weaving. Kathy announced that she was contacted by a woman from South Dakota that wants to take Mary's workshop.

Treasurer: Melanie Smith reported that there is \$4,243.44 in our Checking Account and \$4,509.14. She also reported that our CD has been rolled over for another year.

Membership Chairman: Irene Chandler introduced a guest, Kim Severns.

Cindy Schaffer announced that the new books that were donated are available for checkout in our Library.

Secretary: Janet Stanger announced that she has sent some Get Well Cards to some members that have missed due to illness and surgery.

Newsletter: Rebecca Winter asked that we send items for the newsletter.

ANWG: Rebecca reported that the Grant is still available and the criteria for grant should be available soon. They will be having their June meeting here.

It was announced that Cynthia Newman was our new recipient of the Certificate of Excellence: Level I, and her Celebration will be March 14th at the home of Anne Oglevie, in Weiser. It will be a pot luck luncheon. All are invited.

Show and Tell: Lynn Ruggles showed a Glimakra weaving, Carol Freeman modeled an ice dyed shirt and a Coat. Penny Schraufnagel showed a Hardanger pillow, a scarf from Marino samples, Cynthia Newman showed a tencel scarf of Bead Leno. Kathy McGowen showed a Scarf, Ivy DeHart showed a 24 harness sample. Mitzi Meyers showed a felted bag.

A UFO was presented by Nancy Swenson.

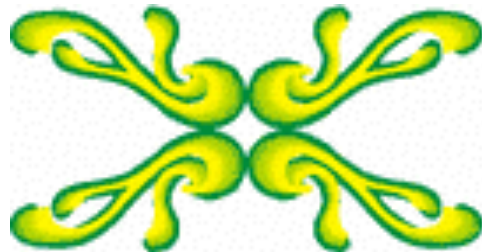
Melanie Smith won the Rainbow Bag.

Study Groups: Melanie Smith reminded everyone of the Garden Valley spin in. She will keep every one updated on road conditions on the yahoo group. Refer to the newsletter for all study groups time and locations.

Nomination Committee: Mitzi Meyers announced that she has the Slate of Officers for April's vote. It will be President- Vila Cox, Vice Presidents- Melanie Smith and Lynn Ruggles, Secretary- Janet Stanger, Treasurer- Kathy McGowen, Membership Chairman- Kathy Shiflet. Mitzi reminded us that the Guild is a Team and we must work as a Team. Everybody has to do their share.

Meeting adjourned for Leno Presentation,

◆ Respectfully submitted, Janet Stanger, Secretary



Connecting Threads
PO Box 6258
Boise ID 83707

The monthly newsletter from the



handweavers guild of boise valley, inc.

