

Connecting Threads

Handweavers Guild of Boise Valley

May, 2009

*** ANNOUNCEMENT ***

We will be home for the May meeting. That's right folks we get to meet in the Adelmann House this month.

Calendar of Events:

- May 2, 2009 - Board Meeting
Moxie Java, 1122 S. Vista, Boise
10:00 am
- May 2, 2009 - Guild Meeting - Boise Historical Museum - Adelmann House
11:30 am - Business Meeting
12 noon - Social time
1:00 p.m. Program - Yarn and Equipment Sale
- May 14, 2009 - Spinning Study Group
Maralyn's clubhouse in Meridian
6:30-8:30 p.m.
This will be our last meeting before the summer break. During the summer, we will meet at various member's houses for a Spinning Saturday each month. Stay tuned for details.
- June 6, 2008 - Guild Meeting
- Spring Luncheon, High Tea and Linen Towel Exchange
- At the home of Mary Ireland, Homedale



April Program -- Yarn and Equipment Sale

For May we will hold the Annual Yarn and Equipment Sale. Bring all your odds and ends, favorite items or not so favorite items, etc., and buy, buy, buy!

There will be no other formal program.



Linen Towel Exchange

!! Only One Month to Go !!

The Handweaver's Guild of Boise will host a High Tea, Potluck and Linen Towel Exchange at the regularly scheduled meeting in June, 2009.

For your towel we ask that you use linen as a thread in either warp, weft or both. Suggested sizes are 17" by 30" for a linen tea towel or 16" by 32" for a hand towel. Please bring your towel gift-wrapped.

New Officers Elected

The slate of officers for the 2009-2010 year were elected at the April meeting, unanimously. The new officers will assume their duties in June. Remember there are Job Descriptions located on the website. They are as follows:

President - Al Hayden
Vice-President - Cece Stricklin
Vice-President - Kathy McGowan
Secretary - Cynthia Newman
Treasurer - Irene Chandler
Membership Chair - Penny Schraufnagel

Deciphering the Color Code



In April we looked at blue, yellow and white. There were several examples of these spring colors, and Kathy McGowen brought a spectacular quilt using the colors exquisitely.

For the May meeting let's look at lavender. The lilacs may be blooming by then - let them be your inspiration! It will be fascinating to see how everyone defines lavender. I think of it as white (a tint) being added to violet (which is a mix of red and blue). How many layers of lavender can be made from combinations of those elements? Let's find out - check your stash and bring in your lavender!

Challenge 2009

"What Can You Do With Monochromatic?"

I hope that all of you have been thinking monochromatic lately. And, that you are weaving, spinning, and creating some fabulous items for the Challenge this year. The challenge is to select one color on the color wheel going from dark to light or light to dark with at least three changes to the color. The deadline to enter is Saturday, September 12 and finished items should be turned by September 19. The flyer and entry form were in the March newsletter. If you have any questions, please feel free to contact me or any of the Challenge Committee members (Vila Cox, Mitzi Meyers, Penny Schraufnagel, and Rebecca Winter).
☞Julie Gerrard, Chair

Volunteers Needed for Museum Comes to Life

I will bring the sign up sheet for Museum Comes to Life to the May meeting and to the June meeting (picnic) which will be at Mary Ireland's home. Please consider helping with the event on Saturday, September 26. Also, if you are interested in helping, we will be setting up the display sometime in the afternoon on Friday, September 25. I will know about what time when I know where we will be for Museum Comes to Life (in the Adelman House or in the museum). If you have any

questions, please feel free to call me at 342-8562 or send me an email at jgerrard4@mail.com.

Thank you!

☞Julie Gerrard, Chair

Teacher's Corner - Suggestions for Weaving with Linen

The towel exchange is fast approaching. Have you woven with linen recently? Here are some tips from Linda Heinrich, who has done extensive work with linen and published a book on the subject. She also gave a workshop to our guild in the 1980's.

1. Perfect warp tension is more necessary with linen, because of its inelastic quality.
2. Moisture is important in very dry atmospheres to help strengthen the linen warp or weft. Moisture can be added by immersing the wound bobbin in water before weaving, have a humidifier in the room, place a pan of water under the loom, or spritz the warp as you weave.
3. If you choose singles for the warp, use a plied yarn of the same grist at the selvages to help prevent fraying.
4. Advance weaving frequently - about every 2 inches.
5. If possible, weave the entire article in one sitting and maintain an even beat to avoid streaks.
6. When planning, work to have an even denting plan to avoid reed lines.
7. Singles linen yarn in both warp and weft results in the most luxurious textiles, but care and patience are needed to create them.

☞written by Rebecca Winter



Guild Meeting Minutes

April 4, 2009

The meeting was called to order by Al Hayden, President. Members present: Pat Ann, Marlene Bean, Mary Ireland, Rebecca Winter, Irene Chandler, Carolyn Dade, Julie Gerrard, Vila Cox, Marita Turner, Kathy McGowen, Mary Berent, CeCe Stricklin, Lynne Ruggles, Penny Schraufnagel, Janet Stanger, Cynthia Newman, Cindy Schaffer, Ivy DeHart, Nancy Swenson, Mitzi Meyer, and guest Yvonne Anderson.

Vice President Report - Marlene reported that Ruby Leslie will be coming for a weaving workshop next year. CeCe talked about Sharon Alderman coming, but left that up to future vice presidents. Other workshops were discussed. Al also thanked the V.P's for the Laura Fry workshop held in March. It was enjoyed by all who attended.



Irene Chandler gave the treasurer's report.

Penny Schraufnagel the membership chair reported that we now have 39 members.

Study Groups -

COE study group will meet in June. The location will be announced in the newsletter.

Lynn Ruggles & the Spinners Study Group will meet this coming Thursday at 6:30 p.m. at Maralyn Larson's clubhouse.

Vila would like to get the New Weaver's study group started again. Any input from the membership would be appreciated.

Sample Exchange -

Rebecca has samples for each member. The sign up list for future sample sheets was passed around.

Julie Gerrard, Challenge Chair talked again about this year's theme - "What Can You Do with Monochromatic?" She passed around sign up sheets for the various duties for the day.

Library report - Pat Ann has ordered a new spinning book and also a CD by Laura Fry. These should be available next month.

Voting was held for next year's slate of officers with the following results:

Al Hayden, President; Cece Stricklin & Kathy McGowen, Vice Presidents; Cynthia Newman, Secretary; Irene Chandler, Treasurer; and Penny Schraufnagel, Membership Chair.

The Gold Bag was won by Al Hayden.

Show & Tell -

Mary Berent brought her overshot towels and also a towel that was given to her by Laura Fry.

Julie Gerrard brought her workshop book from a former Laura Fry workshop.

Ivy DeHart brought a blanket woven with Pendleton mill end yarns.

Kathy McGowen showed a woven scarf she had finished and yarn she had dyed. She also showed a wool tartan fabric she had purchased for a vest.

Rebecca showed an overshot table runner.

Lynne showed pictures of a number of the items she has recently knitted.

Penny had a scarf she woven and some purses she had made.

Cindy Schafer showed a scarf she had woven and asked the members questions about the pattern she had used.

The program was presented by Resa Jones. It was on Supplementary Warps.

◆ Respectfully submitted, Mary Ireland, Secretary

Guild Officers and Chairs

President - Al Hayden - 343-7300

Vice-presidents - Cece Stricklin - 387-2641

Marlene Bean - 337-3631

Secretary: Mary Ireland - 896-4833

Treasurer - Irene Chandler - 467-4997

Membership Officer - Penny Schraufnagel - 342-1288

Librarian: Pat Ann - 452-3181

Newsletter Editor: Rebecca Winter 895-0975

Weaving Study Group: Julie Gerrard 342-8562

Weaving Intensive Study Group - Al Hayden

Spinning Study Group: Lynn Ruggles 375-9172

COE Study Group: Mary Berent 939-8906

Web Master: Vila Cox 323-7736

Websites

<http://www.handweavers-guild-boise.org>

<http://my.calendars.net/handweavers/>



Ramblings from the President

Spring has arrived since our last meeting. My red tulips are up and blooming all over the yard, unfortunately not just in the flower beds. The squirrels have been busy, they have even planted the yellow ones in some new places this year.



Just like the tulips, my yarn stash seems to be in places that were not planned for it. Too much stash or not enough organization? If you have too much stash, remember the "Yarn and Equipment Sale" this month. It is a great time to pass on to another the goodies that may not fit into your plans

any more. Also a great time to add to your own collection.

-- Al

Study Group News

Spinning Study Group

The Spinning Study Group will meet in May on the 14th at Maralyn Larson's clubhouse from 6:30-8:30 pm.

This will be our last meeting before the summer break. During the summer, we will meet at various member's houses for a Spinning Saturday each month. Stay tuned for details.

Questions or need directions? Call Lynn Ruggles, 375-9172.

Certificate of Excellence (COE) Study Group

The COE study group will meet next on Saturday, June 6. Location and time to be announced. All are welcome to participate. Call Mary Berent for more info. at 939-8906.



Sample Exchange Reinstated

!! Volunteers still needed !!

We have reinstated the Newsletter Sample Exchange. Many of us remember looking forward to receiving our newsletters in the mail with anticipation to see what sample would be included. Weaving? Spinning? It was always a wonderful surprise.

Now you may obtain your sample at the regular Guild meeting from the Sample Exchange Box.

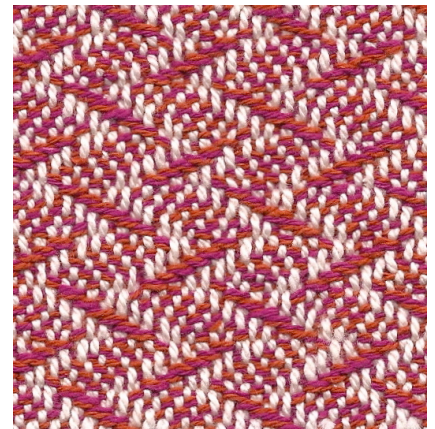
See the sample below that will be available to members at the May meeting.

We still need a sample to be delivered to the chairman this month and to be distributed at the June meeting. Please note that both of the previous two samples were cut from fabric we had already woven. Do you have something on the shelf you are willing to cut into 40 samples? Or is there a skein of wonderful yarn you have spun previously that you are willing to share? We would love to have a small piece of your work.

If you are unable to attend the regular meetings and would like to receive your samples, you may send SASE to the sample chair and she will send out your sample each month. One member sent several envelopes and they are on file in the Sample Box.

If you would like participate or have questions, contact the Sample Chair, Rebecca Winter

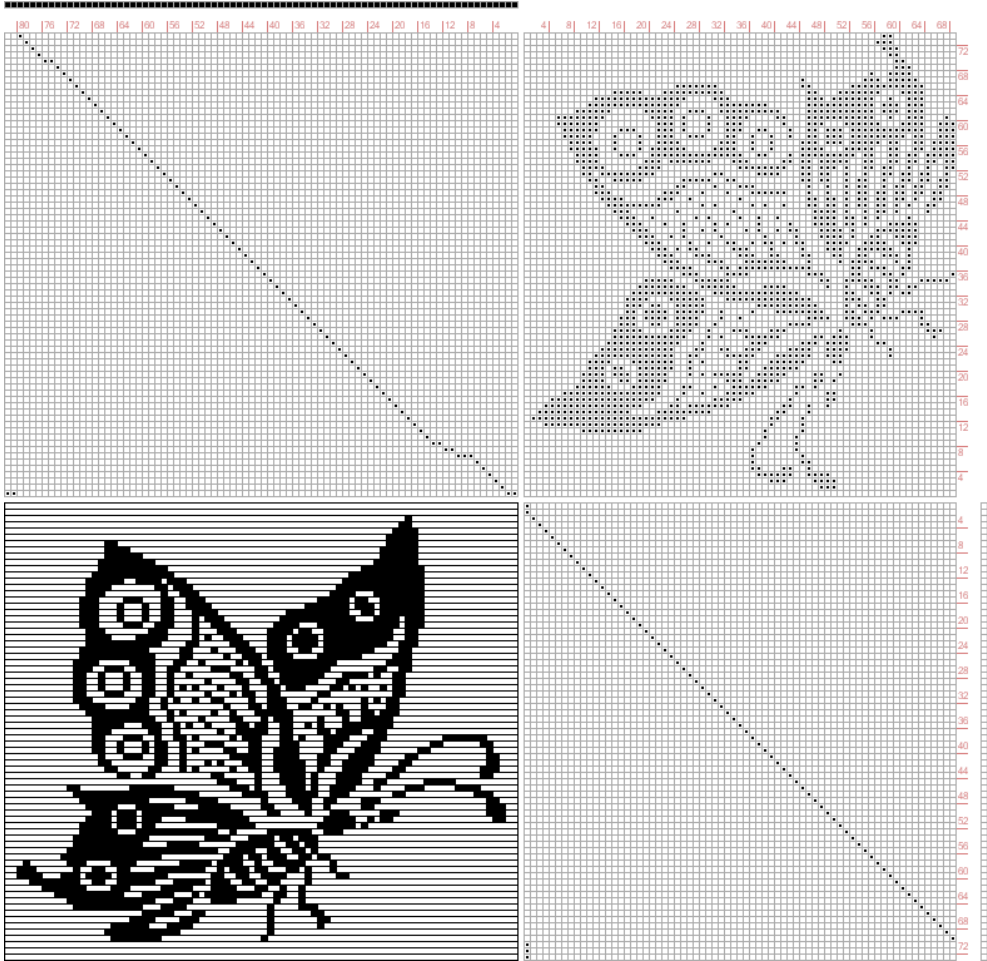
Sample woven by
Mary Berent
12 harness twill
Warp - 5/2 cotton
Weft - 8/2 cotton
Sett - 20 epi



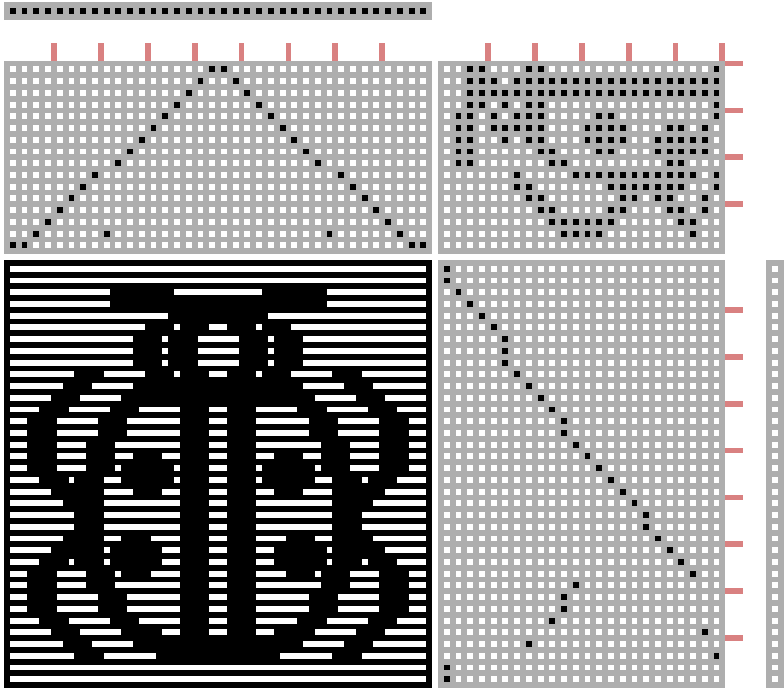
Draft Inspiration

See the following page for a couple of spring drafts. They are from <http://www.handweaving.net> You can go there and enter the number to see all the specifics about each draft, as well as download a .wif file.

Draft # 22625 - Here's one for the books, but very much like Spring - 74 shafts, 69 treadles!!



Draft #18307 - This one's only 16 shafts and 24 treadles.



Connecting Threads
PO Box 6258
Boise ID 83707

The monthly newsletter from the



handweavers guild of boise valley, inc.

May Newsletter Highlights and Please Remembers:

- ☀ **May Program: Annual Yarn and Equipment Sale**
- ☀ **Color Code: Lavender**
- ☀ **Linen Towel Exchange, High Tea and Potluck: June, 2009**
- ☀ **Dues are Due in June - Plan to join again now!**

