

Connecting Threads

Handweavers Guild of Boise Valley

May, 2010



Calendar of Events

ANNOUNCEMENT

We will be in the Adelman House
for the May meeting

May 1, 2010 - COE Study Group

Moxie Java, 1122 S. Vista, Boise
9:30 to 11:00 am

May 1, 2010 - Guild Meeting

Boise Historical Museum,
Adelman House
11:30 am - Business Meeting
12 noon - Social time

1:00 p.m. Program by **The May Yarn and
Equipment Sale**

May 13, 2010 - Spinning Study Group

At Maralyn Larson's Club House
6:30-8:30 p.m.

May 18, 2010 - Day Weaving Study Group

At the home of Rebecca Winter
1 p.m.

June 5, 2010 - Guild Meeting - Annual June Picnic

At the home of Kathy McGowan

May Program

May is our Yarn and Equipment Sale. Bring anything you'd like to sell and money to buy!! Remember that 10% of your sales goes to the Guild.

❖ Thanks, Cece



Ramblings of the President

Come join us at the meeting. I can't get over how much fun the meetings have been this year. And the learning opportunities also abound. This is not the due to yours truly, but it is because of the great membership we have in the guild. You are really missing out on the benefits of your guild if you don't attend.

Speaking of membership, check out the new membership page that Vila has posted on the guild web site.

This month's meeting will conclude with the annual "Yarn and Equipment" sale. Are you a merchant or customer? Or maybe some of both? The sale is a great time to restock or rotate your stash.

Hope to see all on the first.

❖ Al

Letter to the Editor

Dear Handweavers Guild of Boise Valley,

I feel compelled to say what an extraordinary group of weavers and spinners we are! The past few programs have had so much energy and the room has been filled with so many possibilities those programs have opened for our members. We have several new weavers in our guild and it has been a true delight to see the fascination that these recent programs have presented to them, as well as some of us who have been weaving a long time.

I recently visited two guild meetings in the Puget Sound area and I have to say that while their meetings were interesting, I wouldn't trade all their resources for our wonderful group of weavers and spinners. Our show and tell is really exciting and I love seeing the energy the show and tell brings to the whole group. I love being a member of this guild!

❖ Mary Berent



Guild Meeting Minutes

Website Update

A couple of changes have been made to the website. A Membership page was added to provide information to anyone interested in joining our Guild. It contains polices regarding payment of dues and information to help members sign up and become familiar with the Yahoo Group we have for Guild communication.

The Bulletin Board page containing information regarding Museum Comes to Life was removed. Details regarding Museum Comes to Life are now at the bottom of the Meetings page.

I am considering deleting the link to the "Calendar" in the near future. It has never caught on and maybe it is time to cut it loose. Comments and suggestions regarding these changes, and other ideas for improving the website would be welcome.

◆ Vila



Monthly Sample Exchange

For May we have a Spinning Sample from our COE recipient, Lynn Ruggles. It is one she spun for her COE. The yarn is made from Wensleydale, Merino, silk and Alpaca. Yummy, indeed.



Remember to pull your samples from the Sample Exchange Box at each regular Guild meeting. And remember to check your name off the list in each file folder. If you would like participate or have questions, contact the Sample Chair, Rebecca Winter.

April 3, 2010

Attendance: Julie Gerrard, Cece Stricklin, Al Hayden, Carol Freeman, Vila Cox, Mary Berent, Rebecca Winter, Melanie Smith, Cheryl Wurtenberger, Penny Schraufnagel, Pat Ann, Kathy McGowan, Cynthia Newman, Lynn Ruggles, Mitzi Meyers, Cindy Schafer and Marita Turner.

President Al Hayden called the meeting to order.

Vice Presidents report: Cece reminded everyone to "buy, buy, buy and sell, sell, sell" at the annual guild yarn and equipment sale in May. Guild members will be charged a 10% commission on sales and non-guild members will be charged 20%.

Kathy reported that the Ruby Leslie workshop was successful. The participants wove colorful samples, were inspired and learned a lot.

The vice presidents are in the process of planning the annual 2011 spring workshop. Robin Spady has been selected as the workshop instructor. Robin has sent a proposal for (4) 2-3 day workshops which the guild membership will vote on in the coming months:

- Extreme Warp Makeover
- Pictures, Piles, Potpourri, and Perplexing Curiosities
- There are Two Sides to Every Cloth
- The Fab Four

Kathy said that she will be hosting the June potluck luncheon and meeting at her home in Eagle. She will "order sunshine". Cece will be giving an indigo dye demonstration.

Treasurer's report: Irene was absent from the meeting, but sent a message stating that if anyone needs to be reimbursed for expenditures, please call her or send her an e-mail and she will get a check out to you.

Librarian's report: Pat Ann said that she was planning on staying in the library for several hours after the meeting to straighten around the books that were shifted during the move. She will be ordering Anne Dixon's, The Handweaver's Pattern Directory, book for the library.

Newsletter Editor: Rebecca said that she will be "changing up" the newsletter soon.

Sample exchange: Julie Gerrard wove the sample for this month's exchange. It is a 4-shaft advancing twill, woven at 25 epi. The pattern is called Swedish Snowflake and from Laura Fry's Magic in the Water II notebook.

The Challenge: Vila said to be thinking about "thick and thin" for the Challenge this year.

2011 Intensive: The topic for the intensive next year will be doubleweave. Mary Berent said that the current (March/April 2010) Handwoven issue focuses on the doubleweave structure.

COE Study Group: Mary reported the COE group meets every other month at Moxie Java on Vista at 9:30 am before the guild meeting. The next meeting will be Saturday, May 1st. Everyone is welcome.

Spinning Study Group: Lynn said that the group meets the 2nd Thursday of every month from 6:30 - 8:30 pm, everyone is welcome.

Announcements: Mitzi reported that the Sweet/Emmett Spinners will be meeting at her house in Sweet June 26th, everyone is welcome.

Gold bag: The gold bag was not in attendance.

Al handed out the ballots for the election of the 2010/2011 officers. The votes were tallied and the decision was unanimous to accept the slate of officers as presented:

- President: Cynthia Newman
- Vice Presidents: Kathy McGowan and Mitzi Meyers
- Secretary: Janet Stanger
- Treasurer: Irene Chandler
- Membership Officer: Penny Schraufnagel



Al Hayden will stay on as the museum liaison and Rebecca Winter will continue for the Newsletter. Katrina Duckett will be the librarian. Al stated that with the changeover of librarians from Pat Ann to Katrina Duckett, we need to address the storage of the guilds equipment. The guild owns wool combs, carders, Dorothy looms, warping boards and a bead loom. **Al asked that members that are housing equipment send him an e-mail so that we can have a current and accurate list of where all of the equipment is.** Mitzi will check into the possibility of storing the equipment in her shop. It was suggested that a complete list of guild equipment be posted on the web-site and in the guild membership booklet. Rebecca will review our guild policies regarding the sale of guild equipment. If individual equipment items are sold, a notice will go out in the newsletter to guild members first, before it is advertised to the general public.

Al said that we received a letter from ANWG (Association of Northwest Weavers Guilds) inviting our guild to be a member.

Show and Tell:

❖ Cece brought a book, Designing Woven Fabrics, by Janet Phillips of the UK to share. Cece learned about the book from Ellie who owns the book and had woven a sampler from the book. There was a lot of

interest in the book and Pat Ann offered to check and see if the guild could save money on the book if they placed a bulk order.

❖ Penny brought some yarns that she spun from fiber that she purchased at The Fiber Addict, one of our advertisers. She had a skein that she called "Easter egg."

❖ Cheryl Wurtenberger shared a double weave pickup hanging and a name draft that she has been working on. Mitzi has been helping her with a name draft for her dad and her samples show a progression as she works on sett.

❖ Cindy S. finished a blanket for her grand nephew; she learned a lot from the process and has decided that she doesn't like random patterning. She also showed a 5-harness huck scarf that she wove for her daughter to wear at her wedding. She used a soft purple yarn from Mitzi's Yarns.

❖ Lynn had some warp left over from her Bumberet #2 sample from the Ruby Leslie workshop. She wove the remainder of her warp with a cotton weft and made a small bag.

❖ Mary Berent just spent a week teaching workshops and giving lectures in the Seattle area. She taught a supplementary warp workshop to the Olympia and Seattle weavers guilds and Combining Common Cotton to the Tacoma weavers guild. She will be teaching at the Mid-Atlantic Conference in Gettysburg, Pennsylvania in 2011.

❖ Rebecca showed some new ATC that she has been working on; some have "impossible drawings" on them.

❖ Melanie Smith participated in the Olympic challenge this year and she spun a 3-ply yarn and knit a sweater with Merlin and Jasper Shetland.

❖ Mitzi has been working on completing a project begun by the late Shirley Sterling. She is weaving 2 panels for a blanket made of wolf-husky mix yarn spun by Shirley. The blanket will be 75% handspun yarn.



❖ Vila showed some watercolors that she has been working on with the Nampa Art Guild.

❖ Carol Freeman showed a jacket that she made with handwoven cuffs and collar. The fabric was woven with yarn from Mitzi's Yarns.

❖ Pat Ann showed a quilted jacket that she was wearing that turns into a bag.

❖ Cheryl Wurtenberger and Carol Freeman have individually been weaving bags with recycled shopping bags. Carol likes Cabela's bags and Cheryl likes Target bags.

Program: Cynthia Newman presented an excellent program about weaving with torn silk fabrics. Her designs were developed for the fashion industry and are quite haute couture.



Board Meeting Minutes

April 3, 2010

Attendance: Al Hayden, Penny Schraufnagel, Cece Stricklin and Cynthia Newman

Al reported that Kathy McGowan will be hosting the June potluck luncheon and meeting at her home in Eagle. Cece will be demonstrating indigo dyeing at the meeting. Al will be out of town.

Pat Ann is interested in getting rid of some of the guild equipment; she said that 1 Dorothy loom and the drum carder were the only items checked out in the last 2 years. Katrina Duckett will be the new librarian in 2010/11 and she does not have the room to store the equipment. There was a discussion about whether or not the timing is right to get rid of some of the equipment. Al said that he will bring the discussion to the guild membership. Penny will see about making space in her studio for the drum carder.

Cece stated that she felt that Ruby Leslie was not comfortable with the guild putting together a workshop binder for the library. Al motioned that we *do not* make a copy for the library, Cynthia seconded the motion, and the vote was unanimous. The Board concurs with Ruby Leslie not to put a workshop binder in the library.

Al thinks that we will be back in the Adelman House next month. He said that we will need to shim up one of the library cabinets in their new location in the loom room.

Al has paper ballots for the voting of officers at the general meeting. The By-laws require paper ballots.

Al said that members are encouraged to bring items to the annual guild equipment sale in May. Guild members will pay a 10% commission to the guild and non-members will pay a 20% commission to the guild on sales.

❖ Respectfully submitted, Cynthia Newman,
Secretary



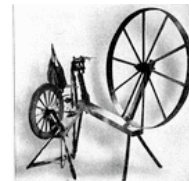
New members:

Rena Lute
2273 W Burns St.
Eagle, ID 83616
208-891-2111
Rllute7@gmail.com

Lonna Alexander-Steele
PO Box 1210
McCall, ID 83638-1210
208-634-9702
perseides@citlink.net

Return of prior member:

Phyllis Bulgin
PO Box 754
Donnelly, ID 83615
208-325-8014
Cell 208-989-5199
Phyllis@etcweb.net



Study Group News

♥ Spinning Study Group

The Spinning Study Group will meet at Maralyn's clubhouse on May 13 from 6:30-8:30pm. This will be our last wild and crazy blowout party before summer arrives. We will not be meeting again until September. Stay tuned for news of summer spinning events. For directions, contact Lynn Ruggles, 375-9172.

♥ Day Weaving Study Group

The Day Weaving Group meets on the third Tuesday at 1 p.m. at the homes of participants. Each participant chooses what they want to study. If this is something you are interested in, come join us.

The meeting on May 18, will be at the home of Rebecca Winter. Call Rebecca at 859-2822, for more information.

♥ Certificate of Excellence (COE) Study Group

The COE study group will meet next on Saturday, May 1. We will meet at the Moxie Java on the corner of Vista and Kootenai in Boise. We will meet from 9:30 am to 11:00 am. All are welcome to participate. Call Mary Berent for more info. at 939-8906.



Guild Officers and Chairs

President: Al Hayden 343-7300
Vice-presidents: Cece Stricklin 387-2641
Kathy McGowan 939-7215
Secretary: Cynthia Newman 541-523-2451
Treasurer: Irene Chandler 467-4997
Membership Officer: Penny Schraufnagel 342-1288
Librarian: Pat Ann 452-3181
Newsletter Editor: Rebecca Winter 859-2822
Weaving Intensive Study Group: Al Hayden
Spinning Study Group: Lynn Ruggles 375-9172
COE Study Group: Mary Berent 939-8906
Day Weaving Study Group: Rebecca Winter
Web Master: Vila Cox 323-7736

Websites

<http://www.handweavers-guild-boise.org>
<http://my.calendars.net/handweavers/>



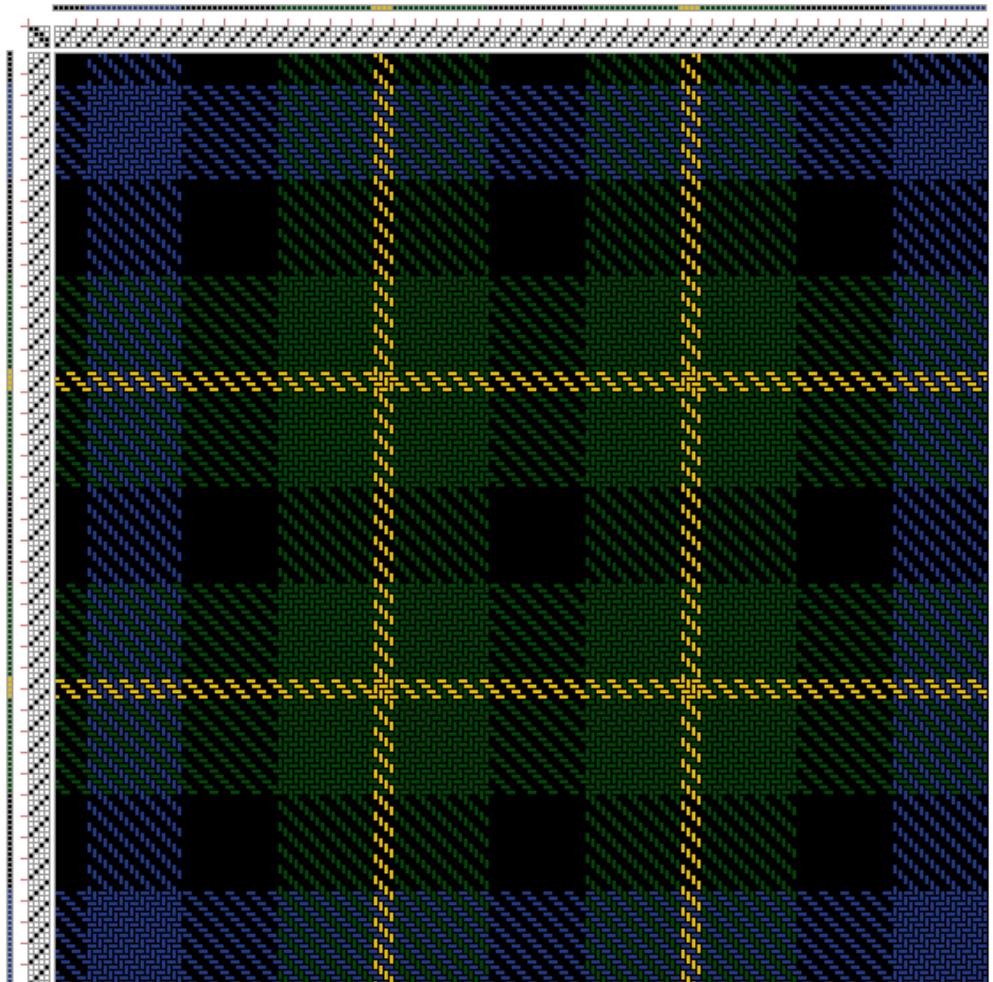
Free-ware celtic knots and designs found at:
<http://www.aon-celtic.com/>



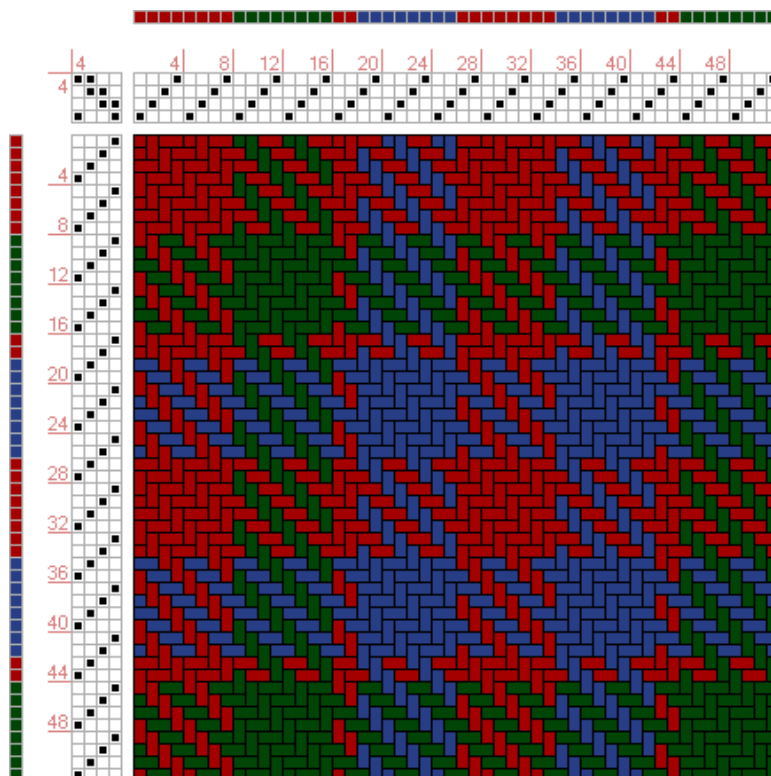
Draft Inspirations

The following draft is from <http://www.handweaving.net> You can go there and enter the number to see all the specifics about each draft, as well as download a .wif file.

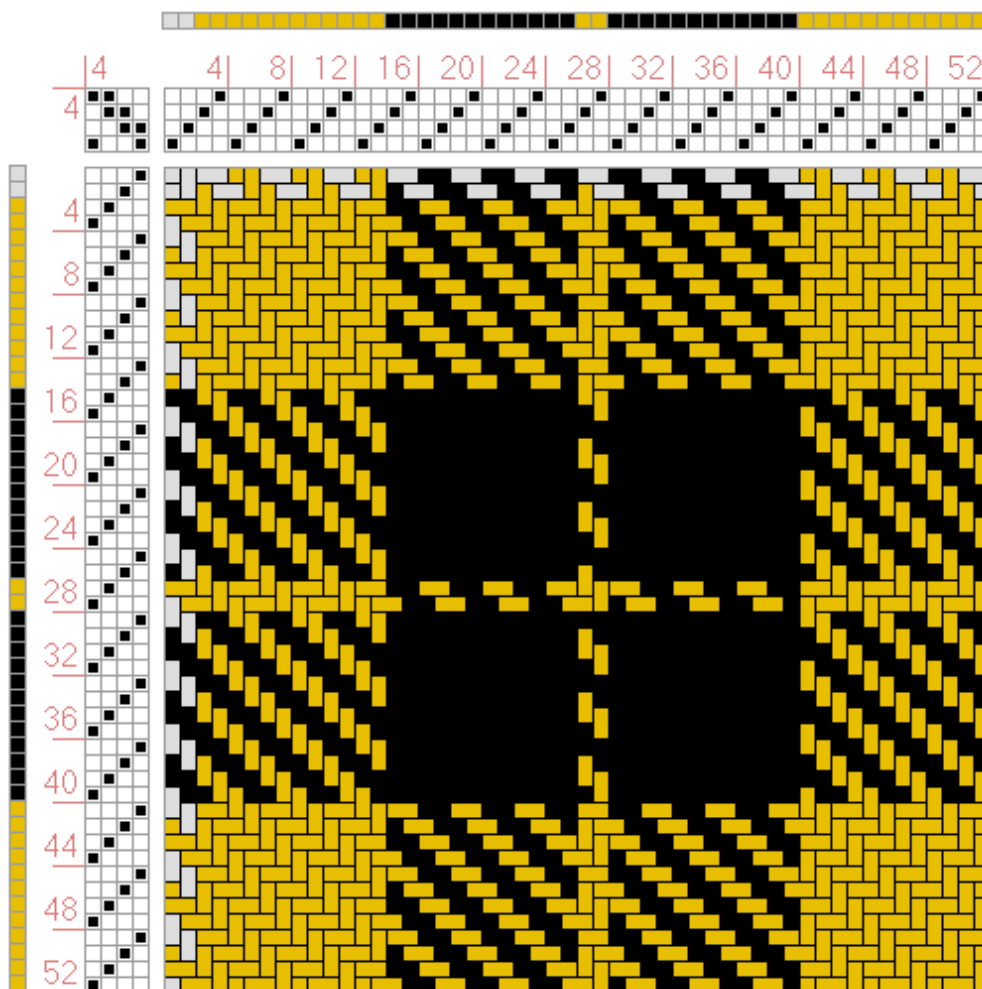
Campbell of Breadalbane
(BK6, B18, BK18, G18, Y4,
G18, BK18): Scotland,
Date Varying, 1800-2005,
Draft #13616



Gow (R8, G8, R2, B8, R8): Scotland, Date Varying, 1800-2005, Draft #13667



Barclay Dress (W2, Y12, BK12, Y2): Scotland, Date Varying, 1800-2005? Draft #13595



Thick & Thin - Challenge 2010

For the 2010 Challenge we are going to mix things up a bit, that is, mix up the yarns you choose for your weaving projects. Each woven entry must use an obvious combination of thick and thin yarns. The thick and thin yarns need to stand out as part of the design process. So let's step out of the uniform world and try something new.

It's time to quit trying for the perfectly even yarn. Handspun entries need to be slubby or have a thick and thin element of some kind. So try a new technique or spin up an old favorite that will be lumpy, bumpy, and oh so unique.

Some weave structures are traditionally woven with thick and thin yarns. What new ideas will you come up with for our Challenge this year? It is a great time to try something new and push the limits of tradition.

All entries must be an obvious mixture of thick and thin and must be entirely your own work, finished since last September.



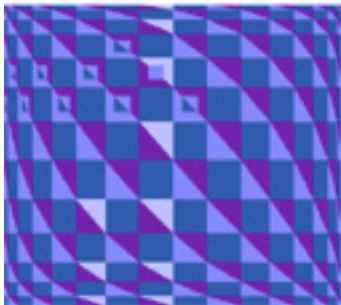
There will be four categories for prizes:

1. Flat handwoven items - includes yardage and hemmed or fringed pieces (scarves, towels and rugs). A mixture of thick and thin threads must be obvious in each handwoven item.
2. Handspun skeins - must be obviously thick and thin, or a thick strand plied with a thin strand.
3. Finished items from handspun yarn - must be made from handspun yarn that would qualify as a handspun skein this year or a combination of thick and thin handspun yarns.
4. Fiber Arts - non-flat handwoven fabrics (including clothing) or 3-dimensional items, and must be made of at least 50% fabric or handspun that would qualify in their respective categories this year.



Prizes for each category: \$50 First Place - \$35 Second Place - \$15 Third Place
 Registration is due by Saturday, August 28th ~~~ Finished items are due by September 20th
 Museum Comes to Life is September 25th

Entry Fees are \$5.00 for the first entry, \$2.00 each for the second and third entry (a maximum of \$9.00). Any additional entries from the same person are free. Enter as many pieces as you wish.



"Through Thick and Thin"

Meaning: Through all forms of obstacle that are put in one's way.

Origin: 'Through thick and thin' is one of the English language's older expressions. It is venerable enough to date from the times when England was still a predominantly wooded country, with few roads and where animals grazed on what was known as wood pasture, i.e. mixed woodland and grass. The phrase originated as "through thicket and thin wood."
<http://www.phrases.org.uk/meanings/through-thick-and-thin.html>



Entry Form:

Name: _____ Telephone Number: _____

Address: _____

email: _____

Category: _____

Description of Piece: _____

Fee Enclosed: _____

Submit form and entries to: Vila Cox 2668 N Westminster Pl Boise ID 83704 323-7736

Connecting Threads
PO Box 6258
Boise ID 83707

The monthly newsletter from the



handweavers guild of boise valley, inc.

May Newsletter Highlights:

- ☀ **Program: May Yarn and Equipment Sale**
- ☀ **Check out this year's Challenge: See page 7.**

