

✿✿✿ Connecting Threads ✿✿✿



Handweavers Guild of Boise Valley
May, 2012

May Program: The Annual Yarn and Equipment Sale

Can you hardly wait to see what everyone brings out for the sale? What do you plan to pass along to another fiber lover? Remember the seller collects their own money and pays 10% to the Guild at the end of the sale. We all look forward to this fun tradition!

Calendar of Events

April 26 & May 24, 2012 - Sock/Knitting Study Group

The Home of Melanie Smith
6:30 pm - 8:30 pm

May 5, 2012 - Guild Meeting

Boise Historical Museum at the Adelman House
11:30 am - Business Meeting
12:30 am - Social time
1:00 p.m. - Annual Yarn and Equipment Sale

May 8, 2012 - Bobbin Lace Study Group

Rebecca's Studio House
6:30 pm - 8:30 pm

May 10, 2012 - Spinning Study Group

Maralyn Larson's Clubhouse
6:30 - 8:30pm

May 21, 2012 - Day Weaving Study Group

The Home of Melanie Smith
1:30 pm

June 2, 2012 - COE Study Group

Before the Picnic
9:30 to 11:00 am

June 2, 2012 - Next Regular Guild Meeting - Picnic



New Study Group: From Sheep to Garment

In August we will be starting a new study group. Our plan is to start by finding a fleece and end up with a finished item -- be it a shawl, sweater or whatever. In this study group we will talk about finding the perfect fleece for your project, ways to wash it, the best ways to process it, spin it and even dye it, if you want. Then we will support each other with either the knitting or weaving. If you are interested joining in on the fun please call or email Melanie Smith 385-0085, 608-0101, yarnsthreads@aol.com Meeting dates and times will be figured out as soon as we get a count of all who are interested. We are planning to meet at the Fair this August to do a little fleece shopping.

Ramblings of the President

Really want to say THANK YOU to the guild (which means all of you) for the opportunity to present the program on weaving with Rayon Chenille. It really pushed me to weave some structures I had not tried and to "study." Generally I go where the shiny things take me, so focusing on one thing can be quite a feat and a good learning experience.

Are you thinking of spring cleaning? I am gathering stuff for the Yarn and Equipment Sale. There are sure to be some great deals, so be there or be square. :)

❖ Thanks again and happy spring!!! Mitzi Meyers



Interesting Concept

As you may know I have recently been an avid Raveler on Ravelry.com. This is a web community of knitters, spinners, and weavers, etc. There is a lot of information offered there about all topics fiber. You can join discussion groups on whatever topic interests you. Mostly I hang out in the Warped Weavers Group.

I recently found another group called Conceptual Knitters. They are knitting scarves following the color of the sky for the day. They knit two rows each day as a sort of a diary record of the sky colors.

I wonder how this concept might translate to weaving or spinning. One weaver creates what she calls a Tapestry Diary. She weaves a small section each day on her tapestry, and each month has a color theme. I am amazed someone is disciplined enough to actually do the task each and every day.

It is interesting to think about the fact that our created works are a sort of record of our lives. What is the legacy we are leaving for others to discover? Any ideas about how we can incorporate conceptualism into our weaving or spinning?

Website link: <http://www.ravelry.com/>

◆ Your Editor, Rebecca Winter

Saturday Summer Spinning

Saturday Summer Spinning starts in June. We meet from 10am-3pm, with a potluck lunch.

June 16: Maralyn Larson's clubhouse, 350 E. Carmel Drive, Meridian.

July 14: Anne Olgevie's house in Weiser, ID. Address: 30 Hill Road, Weiser.

Directions: Take 84 west to Exit 3, Fruitland and Payette. Head north on Route 95 through Fruitland and Payette. Drive north for about 5 miles, turn left on Cox Road. Cox Road intersects Hill road in a T-intersection. Turn left and the driveway is through the orchard just north of the intersection. Note that if you look at Google Maps, the location shows the house south of Cox Road which is incorrect.

August 4: Pat Ann's Studio in Fruitland, ID. Directions: Take 84 west to Exit 3, Fruitland and Payette. Head north on Route 95 to Fruitland. Just north of the intersection of 95 and Route 30, look for the red and white Sign Art sign on the left. Turn left into the driveway and park either inside or outside the gate.

◆ Lynn Ruggles

Challenge 2012

September will be here soon and hopefully you have been creating some wonderful entries for the Color Explosion. An explanation of the 2012 Challenge and entry forms are included in the newsletter. Please feel free to contact any of the Challenge committee members if you have any questions:

◆ Julie Gerrard, Chair; Vila Cox; Melanie Smith



Monthly Sample Exchange

This month's Sample was provided by Kathy McGowan. She wove Baby Blankets in "M's & O's" from the May/June, 2010, Handwoven. Don't forget to get your sample so you can see the pretty colors in person.

Please turn your samples in to Al Hayden, the Sample Chairperson.



Members may pull samples from the **Sample Exchange Box** at each regular guild meeting. And remember to check your name off the list in each file folder. If you would like to participate or have questions, contact the Sample Chair.

Also, remember, there are samples from last year that are available to anyone toward the back of the box.

From the Librarian

Three new DVDs and one book on color usage for weavers have been added to the library. There is also a new DVD on spinning. These will be ready for check-out at the May meeting.

◆ Judy Tallent, Librarian

Study Group News

♥ Spinning Study Group

The Spinning Study Group will meet at Rebecca's Studio House on **May 10** from 6:30-8:30pm for a fun filled evening of spinning, drinking, and general frolic. **NOTE THE CHANGE IN LOCATION FOR THIS MEETING.** The studio is located at 1012 East 3rd Street, Meridian. The study group will not meet from June-August.



♥ Certificate of Excellence (COE) Study Group

The COE Study Group will meet **June 2** before the Picnic. All are welcomed. Contact Mary Berent for info: 939-8906.

♥ Day Weaving Study Group

We will meet on **May 21** at the Home of Melanie Smith, 1:30 p.m. Call Rebecca at 859-2822, for more information.



♥ Bobbin Lace Study Group

We meet on the second Tuesday of every month. In **May** it will be on the **8th**, at Rebecca's Studio House at 6:30 pm. Call Vila for information, 323-7736



♥ Sock/Knitting Study Group

Join us on **April 26 and May 24** from 6:30 to 8 at Melanie's home 523 S. Pond St Boise to work on socks or any other project or if you just want to come and visit. If you have any questions please call Melanie Smith at 608-0101 (cell) or 385-0085. We will be taking a break for summer.



Welcome to Our New Members

Please add this name to your directories.

♦ Mary Seidenstrang

Guild Meeting Minutes

Regular Meeting 4/7/2012 -- Adelman House

Meeting was called to order by President Mitzi Meyers.

Present were: Janet Stanger, Pat Ann, Anne Ogelvie, Penny Schraufnaggel, Mary Sedenstrang, Chris Farrin, Mitzi Meyers, Lynn Ruggles, Ava Lutteman, Jean Zaske, Christine Bagwell, Irene Chandler, Cindy Schaffer, Vila Cox, Al Hayden, Carol Freeman, Renalute, Judy Tallent, Joan Sheehan, Mary Berent.

After introductions, VP Mary Berent reported that the Celia Quinn workshop went well. The instructor was a good teacher and that she did a good job. It is time to pick next year's workshop. Mary passed around a flyer with the descriptions of several classes offered by Susan Wilson. We are to mark the one we would like to see. Mary also reminded everyone that the Yarn and Equipment Sale is coming up in May.



Treasurer Melanie Smith reports that we have a balance of \$4,418.17 in our checking account. Mitzi Meyers asked that we approve a budget that was posted in the newsletter. After discussion Lynn Ruggles moved to accept the Budget. It was seconded by Vila Cox and Al Hayden. Motion passed unanimously.

Secretary- Janet Stanger announced she was waiting to receive notification of our Guild status card to do our annual registration with the Secretary of State's office. Treasurer Melanie Smith reported that she had taken care of it.

Membership Chairman- Irene Chandler reported that we got a few new members from the Celia Quinn workshop, and we had a new person, Mary Seidenstrang, at our meeting today that will be joining.



Newsletter- Editor Rebecca Winter reports everything is going fine with the news letter, and Web Master Vila Cox also reports that the web site is up and running.

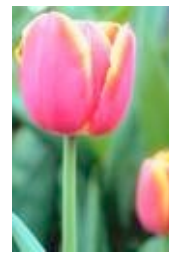
Sample exchange- Al Hayden informed us that today's sample was provided by Vila Cox. He went on to explain the sample box to the new people.

ANWG- our representative Rebecca Winter reported that the ANWG conference is coming June, 2013. Gave a brief description for the New Members. The conference being presented by the Handweaver's Guild of American, called Convergence, is being help this June. You can sign up now. Mary Berent announced that Lynn Ruggles would Be teaching there. Lynn states she is teaching 2 classes 1 is "7 fibers, 7 techniques." The other class is "Spindles from around the world."

Librarian-Judy Tallent announced she had ordered some books that were recommended by Pat Ann and they were on their way.

Show and Tell- Mitzi Meyers shared a Cowl she knitted and 2 chenille scarves. Chris Farrin- a twill Scarf, Penny Schraufnagel- a yarn sample that was bought from Mitzi and reminder of the Mercer estate sell. Notice was published in the newsletter. Melanie Smith shared a hand spun knitted sweater, some hand spun skeins 1 alpaca and 1 cotton, and a woven hemp towel, with a sample of before washed. She was also wearing a vest that she had woven the material using a draft she had gotten from Rebecca's workshop. Rebecca Winter shared a star towel from a 12 harness loom and a scarf she made, during a weave along, using a pinwheel draft. Vila Cox shared her designing process for her huck lace napkins. She shared her pink napkins, which are the same as the sample offered in the sample exchange this month. She also showed white napkins. Nancy Swenson showed us hand spun yarn. Cindy Schaffer finished her socks. Lynn Ruggles brought some items she had bought to show us; she showed a wool shawl she had knitted; also 2 small sweaters she had knitted for her cats.

Challenge Chairman Julie Gerrard- reports that the challenge entry form will be available in the next newsletter. The theme is Color Explosion. Entry fees are \$5.00 for the first entry and \$2.00 for each additional entry for a maximum total of \$9.00. Prize breakdown will be posted in the newsletter. She will have signup sheets available at the next meeting.



Election- Mitzi Meyers passed out ballots that were prepared with the nominated slate of officers. Ballots were counted by Al Hayden. He reports that the officers were voted in by a unanimous vote.

Intensive study group- Chairman is Lynn Ruggles. She informs us that the theme is Summer & Winter. She will have more for our meeting in September or October.

Study Groups- Announced their meeting days. Please see Web Page for schedules and contact person.

Watch the newsletter for schedule and any changes. A new study group was formed. Ann Oglevie will be starting up a study group for the beginning weavers. Also Melanie Smith will be starting a group called sheep to shawl. From fleece to finished product. Looking to start that up in the fall.

Mitzi reports it is the Guilds 40th Birthday. The June meeting is being held at the home of Penny Schraufnagel and there is a committee for the Party. Mitzi also announced several classes that were available in the community. The Guild has a facebook page and you can submit photos to her or Renee to up load.

UFO's- Irene finished her polish rocks by making jewelry, a rock picture she entitled "Isolation ward," and a wind chime. Cindy Schaffer finished her hand warmer gloves, and Carol freeman finished her Jacket. There were no new UFO's presented.

Gold bag was won by Julie Gerrard. A shoe box full of 14 year old yarn.

Meeting adjourned for monthly program. This month the program was presented by Mitzi Meyers, on weaving with "Rayon Chenille."

◆ Respectfully Submitted, Janet Stanger, Secretary



Officers and Chairs

President: Mitzi Meyers 340-9775
Vice-presidents: Mary Berent 939-8906
Rena Lute 891-2111.
Secretary: Janet Stanger 377-0746
Treasurer: Melanie Smith home 385-0085 cell
608-0101
Membership Officer: Irene Chandler 318-8182
Librarian: Judy Tallent 208-615-1857
Newsletter Editor: Rebecca Winter 859-2822
Sample Exchange: Al Hayden
Weaving Intensive Study Group: Vila Cox 323-7736

Spinning Study Group and Weaving Intensive Study
Group: Lynn Ruggles 375-9172
COE Study Group: Mary Berent 939-8906
Day Weaving Study Group: Rebecca Winter
859-2822
Bobbin Lace Study Group: Vila Cox 323-7736
Web Master: Vila Cox 323-7736
Past President: Cynthia Newman (541) 523-2451

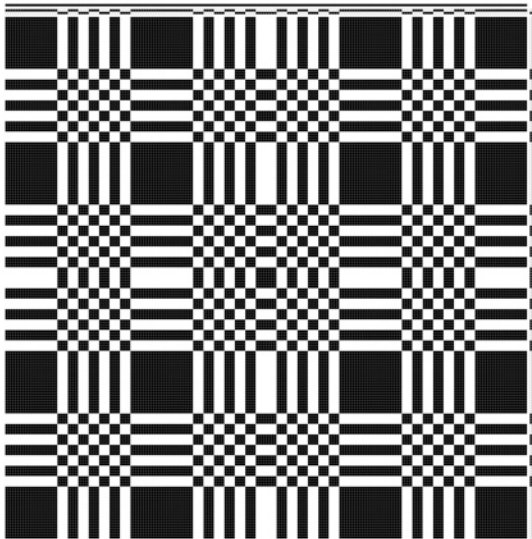
Website

<http://www.handweavers-guild-boise.org>

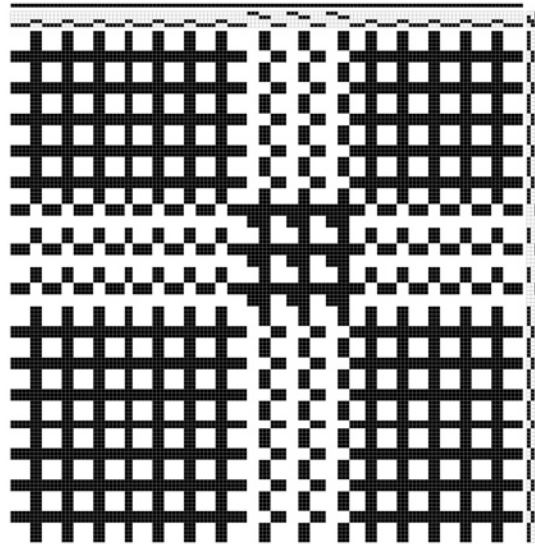
Note: This Newsletter is located online at this address.

Draft Inspiration

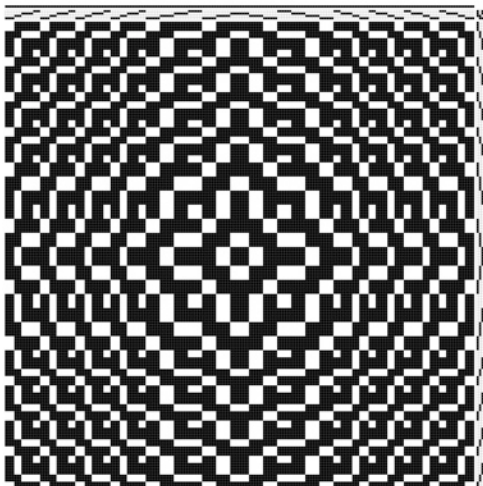
Here are a couple of profile drafts from <http://www.handweaving.net>, to help you start thinking about Summer and Winter, which is the topic for the next Weaving Intensive. There are a few more profile drafts on the website. Check it out.



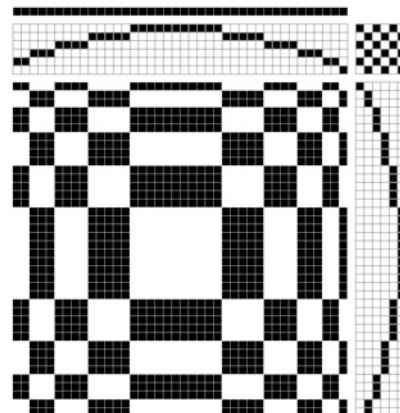
2 block profile



4 block profile



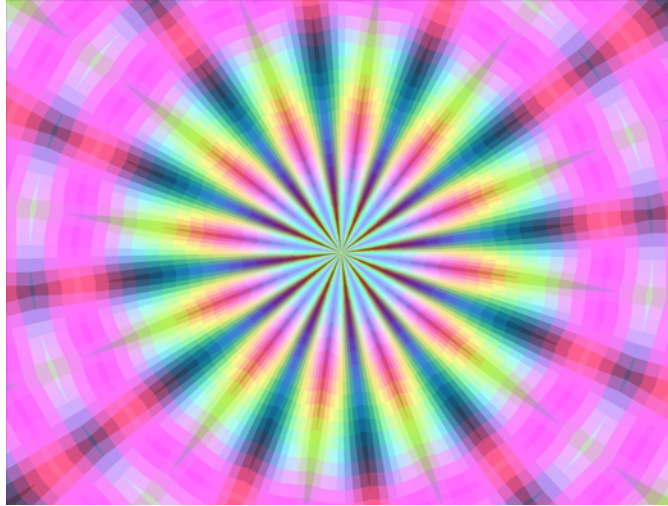
4 block profile



6 block profile

2012 Challenge

Color



Explosion!!!

Use at least 3 colors for each item
Select color harmony for each item

All entries must be entirely your own and created since ~~December~~ September 2011

Four Categories:

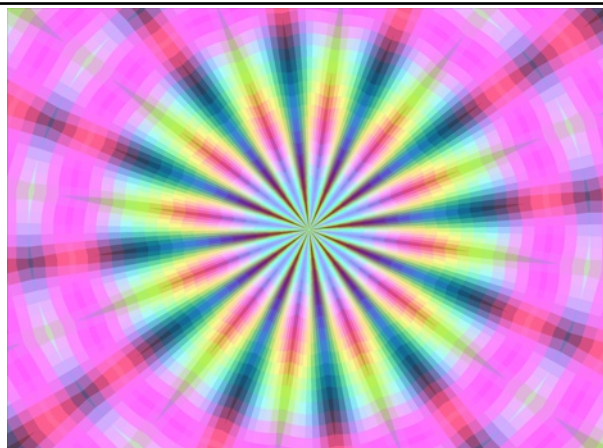
1. Flat Handwoven (yardage, hemmed or fringed items such as scarves, dish towels, shawls).
2. Handspun Skeins (80% handspun) (fibers must be identified)
3. Finished Items for Handspun (50% handspun) (fibers must be identified)
4. Fiber Arts (3-dimensional items, felted items, baskets, garments)

Entry fee - \$5 first entry, \$2 for second, \$2 for third or more entries for a maximum of \$9.

A card will be attached to each entry after entries are submitted. Please provide the following information with each entry:

1. Color harmony chosen
2. Weave structure for handwoven entries
3. Fiber content for all entries

Name	2012 Challenge Entry - Please enter information for each Challenge entry	Sample of Fiber
	Entry fee - \$5 first entry, \$2 for second, \$2 for third or more entries for a maximum of \$9. Number of items entered _____ Total amount of entry fee _____	If fibers were blended, provide a sample of each color in the color harmony.
Category		
Description of Piece		
Color Harmony		
Fiber Content		
Category		
Description of Piece		
Color Harmony		
Fiber Content		
Category		
Description of Piece		
Color Harmony		
Fiber Content		
Category		
Description of Piece		
Color Harmony		
Fiber Content		



Connecting Threads
PO Box 6258
Boise ID 83707

The monthly newsletter from the



handweavers guild of boise valley, inc.

Newsletter Highlights and Please Remembers:

May Program: The Annual Yarn and Equipment Sale

Start Thinking About Challenge 2012

