

# Connecting Threads



Handweavers Guild of Boise Valley  
May, 2014

## May Program: Annual Yarn and Equipment Sale

Profitable spring cleaning and de-stashing opportunity.

Did that yarn purchase seem like a great color, idea, or plenty then, but now just doesn't work? Do you have some equipment you don't use anymore? Want to get rid of some stuff but would like to get some money for it? Bring it to the May meeting and let someone else benefit from it. Please label your items with your name and the price you want, plus 10%, which goes into the Guild budget for next year. Let's really get into some serious un-cluttering this spring. Your studio and creativity will take on new life.

## Calendar of Events

- April 30, 2014 - COE Committee Meeting  
12:00 noon  
Rebecca's Studio House, 1012 East Third, Meridian  
Pizza will be served
- May 3, 2014 - Board Meeting  
Home of Julie Gerrard, 6667 W. Tobi Drive, Boise  
10:00 am - 11:00 am
- May 3, 2014 - Guild Meeting  
Home of Julie Gerrard, 6667 W. Tobi Drive, Boise  
11:30 am - Business Meeting  
12:30 am - **Annual Yarn and Equipment Sale**
- May 8, 2014 - Spinning Study Group  
6:30 pm - 8:30 pm  
Maralyn Larson's Clubhouse
- May 13, 2014 - Bobbin Lace Study Group  
6:30 pm - 8:30 pm  
Rebecca's Studio House
- May 20, 2014 - Day Weaving Study Group  
1:30 pm - 3:00 pm  
Location to be announced
- June 7, 2014 - COE Study Group  
10:00 to 11:00 am  
Home of Penny Schraufnagel

## Membership

Welcome to new member, Pat Day Hartwell, who lives in Caldwell. Pat calls herself a "farm and fiber artist" and we look forward to learning more about her and seeing her various projects.

◆ Irene Chandler, Membership Officer

## Towel Exchange for June

Our members are some of the best, most interesting, weavers around. Join in the fun and put on a towel warp with an extra one or two, to exchange at the picnic in June. Suggested sizes are tea towel through kitchen towel. Tea Towel starts at approximately 16 by 22 inches or kitchen towel approximately 18 by 26 inches. Sizes are a guiding suggestion, larger towels are also OK. Fiber, structure and color are the designer's choice.

Bring each towel individually gift wrapped with no clue as to the weaver's identity. Participants will receive a numbered ticket for each towel entered. Each ticket will allow the person to choose a wrapped towel. We will open the gifts one at a time after everyone has had their turns at choosing.

◆ Ivy DeHart & Pat Ann, Vice Presidents

## COE Judging Planning Committee

The COE Committee will meet **April 30th** at 12:00 noon at Rebecca's Studio House in Meridian. Pizza will be provided so please let Vila know if you are planning on being there and your pizza preference. Bring your own drinks.

We will start the actual planning for the COE Judging. All are welcome to attend and lend a hand with the whole process. Committee Chairs will be looking for recruits, so it helps if they are close by.

◆ Vila Cox

## Plan Ahead for June

June 7th: Annual Picnic and Towel Exchange  
Penny Schraufnagel's house at 2688 S. Goshen  
Way, Boise, ID, phone 342-1288.

Bring a potluck dish to share. We are encouraging attendees to participate in the towel exchange, but it is not a requirement to attend. Just come and enjoy the last meeting of the year and get all the news about summer activities.

◆ Ivy DeHart & Pat Ann, Vice Presidents



## Notes From Your President

I am writing this after taking a trip to northern California and Oregon where I found more inspiration for weaving. The California poppies were in bloom on the hillsides and they were absolutely gorgeous. Fruit trees blooming, ocean waves crashing on sandy and rocky shores, redwood trees shooting up to the blue sky and spring potting out all over the place. Even though I consider myself a structure person, I love color and spring is a wonderful time to experience the colors in nature. Hopefully, all of you will have an opportunity to get outside soon and enjoy the colorful surroundings.

The Yarn and Equipment Sale will be after the next guild meeting. It's a great way to clean out your stash of yarn or fiber weaving and/or spinning space and to your de-clutter your weaving and/or spinning space. Remember that 10% of what you sell goes to the guild which helps pay for guild expenses.

There will also be a board meeting prior to the guild meeting. The board meeting will be at 10:00 a.m. at my house. The address is 6667 W. Tobi Drive in Boise. Anyone who is interested is welcome to attend the board meeting.

◆ Your President, Julie Gerrard

## Challenge 2014 -- Tail of Two Yarns

It is time to really get serious about our projects for the Challenge.

Look at the full page description on page 4 for all of the details. Two (or more) different yarns, size or fiber for weaving and two (or more) different fibers or yarn sizes combined some way for spinners.

Please make your choices so they are readily apparent in the finished item. We also want to have samples of your source yarns or fibers to attach to the finished item. We will have some samples for inspiration at the April guild meeting.

◆ The Challenge Committee

## Library

New items that have been ordered for the Guild Library, as follows:

- *Painting with Wool*, CD, by Sharon Castello
- *A Crackle Weave Companion*, book, by Luch Brusic
- *Weave Classic Crackle & More*, book, by Susan Wilson

These should arrive by the May Guild meeting.

◆ Judy Talent, Librarian

## Tapestry Weaving Workshop and Retreat with Pam Patrie

There will be a two day workshop on tapestry weaving it will be designed for the individual by Pam. Everyone is welcome. If you ever wondered what tapestry weaving was all about this is your opportunity to find out? Pam has looms available if you don't have one yourself. It will be held at the home of Anne Oglevie in Weiser on June 28<sup>th</sup> and 29<sup>th</sup>. There is limited accommodation available. Food will be provided for everyone. The cost will be \$130. It will start Friday with a social evening then workshop on Saturday and Sunday. There is limited space in this workshop so register early.

Pam will contact everyone coming to the workshop so she can tailor your tapestry experience for the weekend. To check out her website go to [pampatriestudios.com](http://pampatriestudios.com).

Contact Pat Ann directly by phone or email to register. Email [patann@fmtc.com](mailto:patann@fmtc.com). Phone number (208) 337-2126.

## UFO Program

Time is running short for completing your UFO's. You have two more chances to show them at the meetings before the year ends.

◆ Ivy DeHart & Pat Ann



## Guild Equipment

Just FYI, our Guild owns equipment available for rent to any of our members. Usually these items are sitting in my storage area just waiting for someone to play with them...

- Drum Carder \$5.00 per month
- Schacht hand cards \$5.00 per month
- Dorothy table looms, 4 harness or 8 harness \$10.00 per month
- Wool combs \$5.00 per month
- Bead loom \$5.00 per month
- Mannequin \$5.00 per week
- Inkle loom \$5.00 per month
- A nice big warping board \$5.00 per month.

There is also a Minerva 4 harness floor loom and a display unit that are not stored at my home.

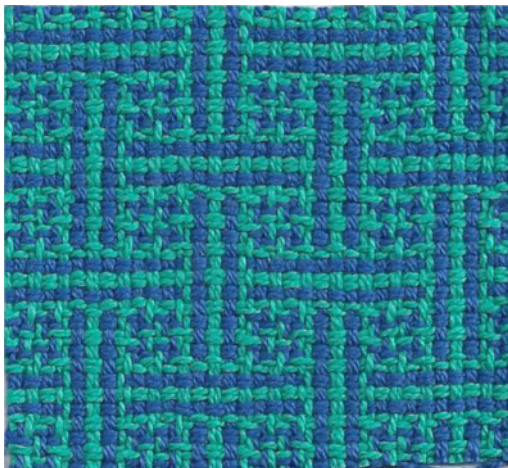
Generally I am in Boise once a week or so and could bring in items for you to rent or bring them to a guild meeting. Just let me know if you are interested in using any of OUR equipment and Happy Spring!

- ♦ Mitzi Meyers, Equipment Storage and Rental Chair at [warpedweaver@hotmail.com](mailto:warpedweaver@hotmail.com)

## April Sample - Interlacement Motif

This month's sample was woven by Mary Berent. It offers a great segue from the Susan Wilson Workshop with the topic of the Interlacement Motif. It is made with 8/2 cotton, and Mary made a wonderful vest with this cloth.

- ♦ Al Hayden, Sample Exchange Chair



### Sample Exchange Box

Members may pull samples from the Sample Exchange Box at each regular guild meeting. And remember to check your name off the list in each file folder. If you would like to participate or have questions, contact the Sample Chairperson.

Also, remember, there are samples from last year that are available to anyone toward the back of the box.

## Study Group News

### ♥ Spinning Study Group

Our next get together will be **May 8th** at our usual spot, Maralyn Larson's club house, from 6:30 to 8:30. Our theme this month is Guild sale finds! As you know our guild sale is on May 3rd, so bring all those gems you found to spin at the sale! We will also talk about our summer plans, so you don't want to miss out on that. If you need directions or have other questions, please email Melanie Smith at [yarnthreads@aol.com](mailto:yarnthreads@aol.com)



### ♥ Certificate of Excellence (COE) Study Group

COE Study Group will meet before the June picnic, 10:00 am, **June 7th**. All are welcome; for more information call Mary, 939-8906.

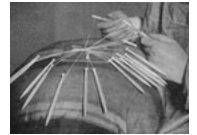


### ♥ Day Weaving Study Group

The Day Weavers will meet on Tuesday, **May 20**, at 1.30pm. Location TBA.

### ♥ Bobbin Lace Study Group

We meet on the second Tuesday of every month. The next meeting will be **May 13**, at Rebecca's Studio House at 6:30 pm. Call Vila for information, 323-7736.



## Officers and Chairs

President: Julie Gerrard 342-8562

Vice-presidents: Ivy DeHart 939-2335 & Pat Ann 208-337-2126

Secretary: Janet Stanger 377-0746

Treasurer: Melanie Smith 385-0085 or cell 608-0101

Membership Officer: Irene Chandler 318-8182

Librarian: Judy Tallent 208-615-1857

Web Master: Vila Cox 323-7736

Newsletter Editor: Rebecca Winter 859-2822

Sample Exchange: Al Hayden 343-7300

Spinning Study Group: Melanie Smith 385-0085

Weaving Intensive Study Group: Mary Berent 939-8906

COE Study Group: Mary Berent 939-8906

Day Weaving Study Group: Anne Oglevie 208-994-2725

Bobbin Lace Study Group: Vila Cox 323-7736

## Website

<http://www.handweavers-guild-boise.org>



# Tail of Two Yarns

This is a tail of two different yarns that joined together to make a beautiful finished piece.  
The two (or more) yarns that gathered together were of different pedigrees.

Some were LARGE

some were small.

Some were from one kind of plant  
some from another kind.

And then there were those from various critters.

In each finished piece there was a something from two different pedigrees.

Two different sizes of one or more fibers

Or

Two different fibers

(two plants)

or

(two critters)

Or

(one plant and one critter)

The same tail goes for those crafty spinners.

Two different sizes of one or more fibers

Or

Two different fibers

(two plants)

or

(two critters)

Or

(one plant and one critter)

Plied, Cabled, Blended or whatever else may apply.

The Fine Print

The two different yarns need to be easily seen

Made by you this year (Nov 2013 – Sept 2014)

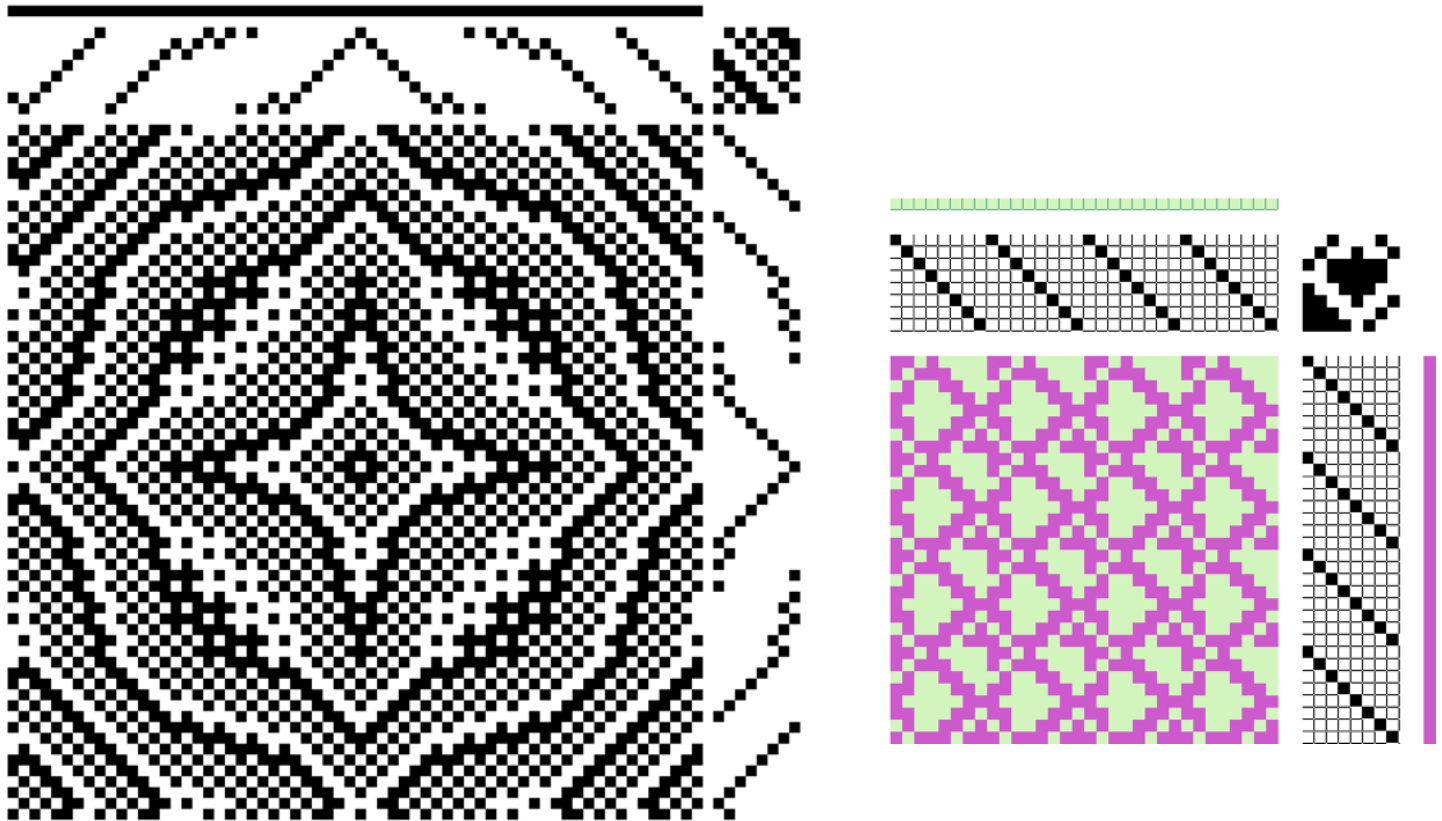
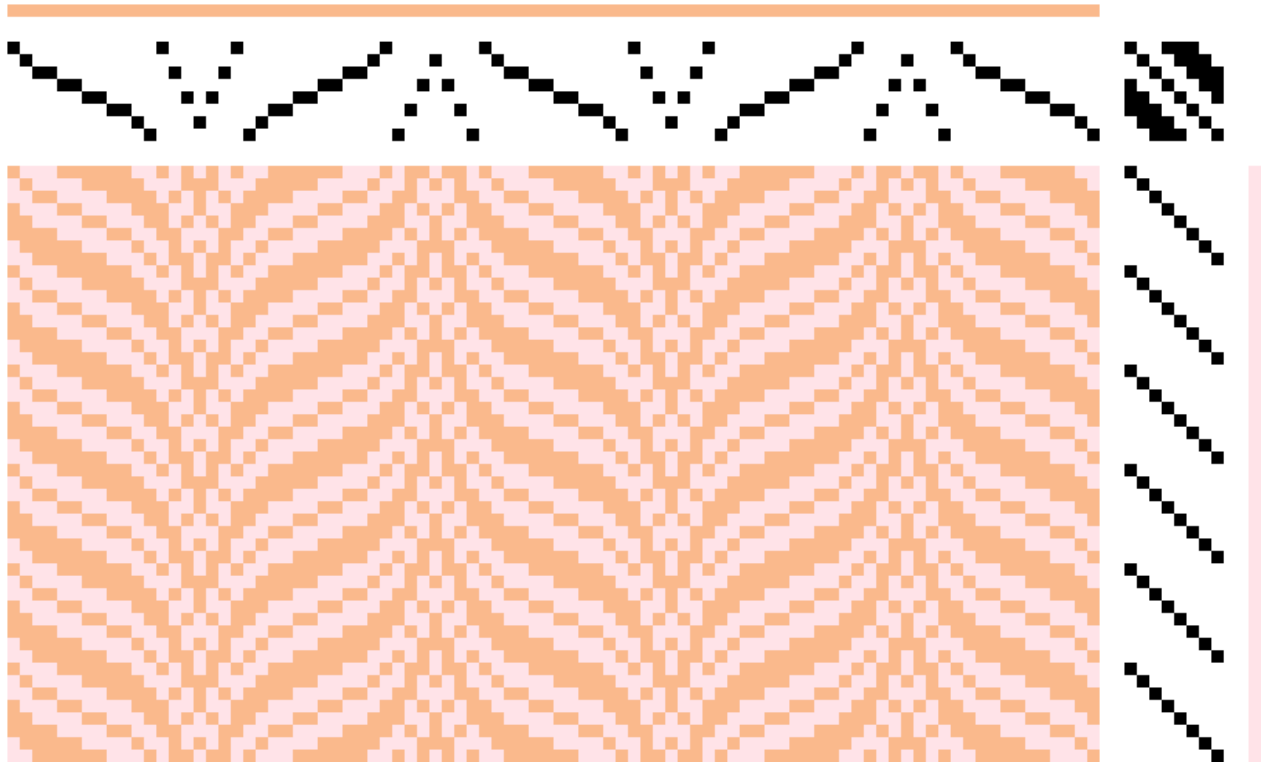
Short pieces of each yarn to be supplied with finished item

Same for spinners (yarn/fiber)

## Challenge 2014

## Draft Inspiration

Looking forward to the Twill Intensive, January, 2015, here are a few Twill Drafts for you to ponder.



Connecting Threads  
PO Box 6258  
Boise ID 83707

The monthly newsletter from the



**handweavers guild of boise valley, inc.**

