

# Connecting Threads

Handweavers Guild of Boise Valley  
May, 2022

## ~May Program: Plant Fibers for Spinning and Weaving, by Lynn Ruggles

The earliest evidence that has been found for spinning and weaving by our ancestors shows that the initial materials were plant fibers. These were used for baskets, later finds include woven fabric. Today, we are also using plants, but now they have been processed into regenerated fiber, all called rayon. In this presentation, we will take a brief look back at the earliest fibers, and then will explore the fibers that are available today. ♡ Lynn Ruggles



## Calendar of Events

### Regular Meeting:

May 7, 2022

11:30 a.m. ~ **Plant Fibers for Spinning and Weaving, by Lynn Ruggles**

At the First Congregational Church of Christ,  
2201 Woodlawn, Boise, in the Banquet Room  
Or Join the Meeting via Zoom.

Look for the link via email or in groups.io [Here](#).

June 4, 2022 ~ The next Regular Meeting  
Yarn and Equipment Sale & No-Host Potluck

### Workshop:

May 13, 14 & 15, 2022 ~ Understanding Twist  
by Lynn Ruggles

### Study Groups:

May 10, 2022 ~ Lace Study Group

10:00 a.m. to 12 p.m. ~ At Vila Cox's home

May 12, 2022 ~ Beginning Weaving Study Group

6:00 p.m. ~ At Rebecca Winter's home & via Zoom

May 17, 2022 ~ Day Weaving Study Group

10:30 a.m. ~ At Rebecca Winter's home

May 19, 2022 ~ Tapestry Study Group

7:00 p.m. ~ At Rebecca Winter's home & via Zoom

### Thursday Fiber Friends Zoom

2:00 p.m. ~ Every Thursday

Request the Zoom link from Jinks Hunter

May 31, 2022 ~ Garment Study Group

10:30 a.m. ~ At Anne Oglevie's home



## The Election of Officers for 2022 - 2023

The election was held at the April meeting and the following officers were elected for the next Guild year. We also accepted the Budget as printed in the April Newsletter. A thank you goes to the members for assisting with the business of the Guild.

### 2022 - 2023 Officers:

President - Rebecca Winter

Vice President - Barbara Redman

Vice President - Christine Brady

Secretary - Sally Johnston

Treasurer - Mitzi Meyers

Membership Officer - Connie Griffin

♡ Rebecca Winter, President

Hemp Plant ♡

Flax and Cotton  
are shown above



It's time to start thinking of renewing your Guild Membership!  
Dues are due in June each year.



## Get Ready for the Yarn & Equipment Sale - June Meeting

Start your spring cleaning early! On June 4th we will be holding our annual potluck, combined with the Yarn and Equipment sale, at the last meeting of the 2021-2022 Handweavers Guild of Boise Valley season. This meeting will be held at the church. Bring your new, previously loved, or otherwise available fiber related items, priced and with your name on them, to sell. Ten percent of the sale price is to be donated to the guild as one of our fundraisers.

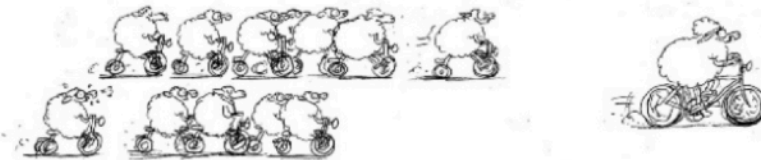
This is a "no-host" potluck so bring your own lunch. You may bring something to share if you wish. Do some shopping, and bring your knitting, spinning, etc, to enjoy time and conversation spent together.

♦ Mary Berent & Connie Griffin, Vice Presidents



## SAVE THESE DATES!!

July 1 - July 24 Tour de Fleece 2022 HGBV



More info to come in June Newsletter!! Spinners, weavers and other crafters – be thinking about your project for TdF2022!

## What's down that Rabbit Hole?

Just recently Easter came and went, but what happened to the Easter Bunny?  
Here is the rumor.

Well, he/she got up early to set out all of the Easter eggs. The bunny was up way before the sun, going about the egg distribution chore. When the sun finally made its presence, the bunny saw its shadow and dove down the Rabbit Hole, just like that there groundhog did. When the Easter Bunny dove down the Rabbit Hole she/he pulled all of the pretty rainbow colors with it, hence grey skies. Now we may not get 6 more weeks of winter from the groundhog, but that darn Bunny delayed spring. The wind came up for days, cloudy and occasionally a rain storm pelted the land and the Lion spring came along.

Well, part of this is true and part is rumor. Sounds like a normal spring in Idaho. We get wind, we get rain, we get flowers come along again, and with the new grass to munch on, the Easter Bunny let go of all the pretty rainbow colors. Color in Composition abounds in the land.

So all of you fibre folks, enjoy your spring, may it be full of color and fresh flowers and plants.

And speaking of the Rabbit Hole, I stuck my arm down trying to retrieve the colors and got thumped.

So again, fibre on. ♦ Doug Ranck



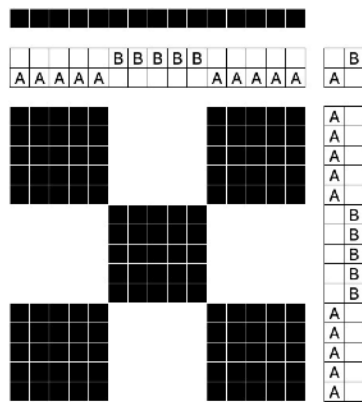
## From Your President

Two Block Shadow Weave Isn't!!

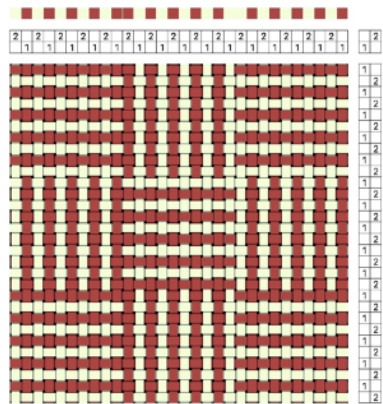
I approach Shadow Weave as a unit or block weave, and I have translated many profile drafts into Shadow Weave. I also know this is foreign language to some of you. Please bear with me here, as I think profiles and block weaves are important for all weavers to know.

When working with Summer & Winter weave for Cynthia Newmans's workshop I created a profile draft from the draft she provided. Summer & Winter is also a unit weave. My assigned draft was 4 harnesses, so in Summer & Winter, because of the rules for that weave, there are two blocks. The profile for the draft was also two blocks.

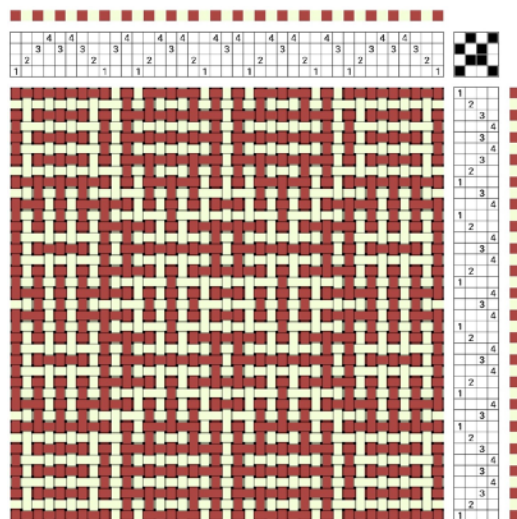
Then, as this is where my brain goes — what would that be translated to Shadow Weave? Below are the results. My conclusion — there is no such thing as 2 block Shadow Weave, because what you get with this translation is Log Cabin. According to my definition of Shadow Weave, the weave will have plain weave hatching **and** the featherstitching created from two thread floats.



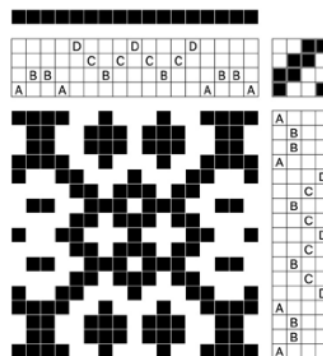
Two Block Profile



Draft created using 2 units of Shadow Weave



Shadow Weave Draft using 4 units



Profile for the Shadow Weave draft

❖ Rebecca Winter, President



## Sample Exchange

The handspun sample for this month is from Jinks Hunter. It is mystery wool from Pat Ann's stash. Jinks spun it worsted on her Lendrum spinning wheel with a Z twist and S ply. It is a 2 ply yarn, natural color.

❖ Julie Gerrard, Sample Chair



Mystery Moorit Wool

## Beginning Weaving Study Group

The Beginning Weaving Study Group enjoyed its first meeting on Thursday evening. 10 guild members participated in the first planning meeting both through ZOOM and in person at Rebecca Winter's home.

This new group is open to all members of all skill levels and will be studying at the Beginner Level once a month. The meeting will occur the second Thursday of each month at 6:00pm, both by ZOOM (when signal allows) and in person. The location will vary depending on the skill being discussed and the volunteers who desire to host. Our first 2 meetings will focus on the basic skills and knowledge needed to properly warp a loom.

Upcoming meetings and topics:

- May 12th at 6:00pm: Rebecca Winter's home in Meridian--- Warping a Loom From Front to Back
- June 9th at 6:00pm: Lunatic Fringe with Michele Belson in Fruitland--- Warping a Loom From Back to Front

(See Directory for addresses and phone numbers)

This study group is a safe place to discuss any beginner weaving topic. All members are invited to bring their struggles and questions to the group so that all can learn together. Members are encouraged to study the upcoming topic(s) and practice new skills as you are able in anticipation of the study group. A good book to use as our guide is Deborah Chandler's *Learning to Weave*. The first two months' topics are covered in Lesson 2 of the Chandler Book.

Meetings will include a group discussion of the monthly topic including demonstrations when appropriate to the skill, a problem-solving discussion time, and "show-and-tell" at the end of the meeting. Meetings are expected to last around 90 minutes, give or take.

- Cindy Griewe, beginner weaver/spinner & Study Group Chair

## Tapestry Study Group

The Tapestry Study Group will meet at 7PM on the 3rd Thursday of each month. This month will be May 19, and the location will be Rebecca Winter's home. It will ALSO be held as a zoom meeting.

All experience levels from brand new tapestry weavers to long-time weavers are presently attending and welcome. If you are even just curious about tapestries, stop by and see if this is something that inspires you.

A reminder that includes the link to the zoom meeting will be sent out to the groups.io email before the meeting.

- Cindy Schafer, Study Group Chair

## Day Weaving Study Group

Come join the Day Weavers group, the 3<sup>rd</sup> Tuesday of each month, unless otherwise notified. This group is about sharing, learning, and supporting. The willingness to share and the combined knowledge make this group a true learning experience every time. All guild members are welcome. Please bring your questions and projects, or just come to absorb and talk weaving.

NEXT meeting is May 17, 10:30 a.m. at Rebecca Winter's home.

SCHEDULED HOSTS FOR FUTURE: June 21, Vila Cox; July 19, Mary Berent; August 16, Anne Oglevie; September 20, Jamie Landry.

- Jenni Jimmerson, Study Group Chair

## Garment Study Group

The Garment Study Group will meet on Tuesday May 31st at 10.30am at the Weiser home of Anne Oglevie. Please bring your lunch. If you need directions please call. Everyone welcome.

- Anne Oglevie, Study Group Chair



## Lace Study Group

The Lace Study Group (formerly known as the Bobbin Lace Study Group) meets the second Tuesday of each month. Meeting time is 10am to 12pm and the location varies from month to month. Whether you are making Bobbin lace, knitting, tatting, or even working on something completely different, everyone is welcome. The next meeting is May 10th at Vila's.

- Vila Cox, Study Group Chair

## Thursday Fiber Friends Zoom

This is a great way to just hang out at home, show each other what we are working on, ask about project issues, inspire, encourage, and laugh. Hope you'll join every Thursday at 2:00 pm. Request the Zoom link from Jinks Hunter.

- Jinks Hunter, Study Group Chair



## Thank you for the Program about Thai & Indonesian Textiles

We had another great program; this one was presented by Fran Yuschak in April. There were beautiful textiles to see and to inspire us in our fiber work.

- Rebecca Winter, President



## For Sale - Will Deliver to Boise

Ashford Traditional Spinning wheel. Includes 3 bobbins, lazy kate, Flicker brush, extra drive band and brake band. \$350. BONUS: hard to find cup holder that hangs on the wheel so you can enjoy your latte or soda as you spin! \$30 (not sold separately).

Box Picker for opening locks before carding: Oak laminate wood, all teeth tight, with cover. 38" long, 12.5" wide, 8.5" tall, weight 40 lbs. \$350.

Boye Electric Ball Winder: \$50.



Contact Lynn Ruggles via email (address in HGBV directory).

Note from Lynn: I will **not** be bring these with me unless I am contacted before May 7.



## Meeting Minutes for April 2, 2022

Before I start on the minutes, I would like to express my gratitude to Cynthia J Newman for taking the minutes in my absence. Thank you!

The meeting was called to order by president Rebecca Winter. Her opening question for this month was "What is your favorite spring flower color?" This practice of answering is very helpful in getting to know one another. Additional members present included Cynthia Newman, Fran Yuschak, Brenda Hatch, Vila Cox, Jean Zaske, Kathy McGowan, Ivy DeHart, Julie Gerrard, Michele Belson, Katzy Luhning, Cindy Shaver, Ester Kleinkauf, Barbara Redmond, Christine Brady, Linda Morton-Keithley, Janet Stanger, Tasha Denegal (?spell), Eve Marostica, Kelly Sandusky, Jeannie Phillips, Irene Chandler, Raelene Viste, Doug Ranck, Connie Griffin, Mary Berent, Amy Brown, Cheryl Wertenburger, Marita Turner, Marlene Bean, and Dyan Lay.

Business: The 2022-2023 Budget was accepted and can be seen in the April newsletter for details. This year's budget includes our Zoom license. Mary Berent moved that we approve the budget and Julie Gerrard seconded it. The motion was passed to accept the budget as presented.

Mary Berent, Mitzi Meyers and Julie Gerrard, as the nominating committee for officers this year, passed out paper ballots. The vote was to respond to the full slate with a simple yes or no. The slate presented:

President: Rebecca Winter

Vice Presidents: Barbara Redmond and Christine Brady

Secretary: Sally Johnston

Treasurer: Mitzi Meyers

Membership Officer: Connie Griffin

The 24 members present all selected "yes." The new officers will take over their positions at the end of June.

Announcements: Doug Ranck has the "OWL" on loan from Canyon County Extension. We are grateful for this loan. Please be certain that it will not be damaged as Doug would be held responsible.

Vila Cox has Rowan yarn for sale that has been donated to the guild. It is on one of the back tables and priced. Make checks out to the guild then give them to Vila.

Show and Tell: Another wonderful array of fiber work was shared.

### **Brief Reports:**

Sample Chair: Julie Gerrard said this month's sample uses a 10/2 cotton from Vila's challenge and woven by Cindy Shafer.

Outreach Committee: Janet Stanger informed us the Hidden Springs Old Farm Days will occur on the last Sunday in September. They are always happy to have us. Perhaps this would be a good time to start up our Challenge again. The Challenge used to be at the Museum Comes To Life in which the public votes for their favorite. There is also the State Fair from August 19-28. Janet is waiting to hear if they will have demos. Let Janet know if you would like to demonstrate our fiber arts.

Rebecca inquired if members want to start a Challenge. Vila said we need a dedicated group of volunteers and everyone needs to be involved. Rebecca suggested we spread out the work. We need a core committee and Vila has the information to help the committee get started.

As noted in the last newsletter this is the 50<sup>th</sup> year of our guild. Please ponder and make suggestions. Julie Gerrard suggested a display and members interested in getting involved meet to get things started.

Vice Presidents Report: As Barbara Redmond will be one of the new vice presidents, she will be sending out a survey to see what members are interested in, so please respond.

The weaving workshop on Color in Composition is scheduled for April 22 - 24. There will be a spinning workshop in May with Lynn Ruggles on twist. It will take place at Amy Brown's house in Caldwell. Please let the Vice Presidents know if you would like to attend. Lynn will also present a program for the May guild meeting.

Librarian report: The library committee will have a work day, Monday April 11 at 10:30. Kelly Sandusky and Brenda Hatch have volunteered to help Rebecca and myself with the task. Thank you ladies for your assistance.

Weaving Intensive: Connie Griffin explained the Weaving Intensive we have every year in January. She was talking about it with our newest member Eve. Every member of the guild may participate in this

three day event. It is held in Bowmont over the Martin Luther King weekend. A topic is selected and everyone brings a loom. If you want to rent a loom from our equipment library see Vila Cox. The rental is free for workshops. If you would like to rent a loom other than for a Guild event, the rental fee is approximately \$35.00 per month, depending on the loom.

**Program:** The vice presidents introduced the program and the artist. Fran Yuschak gave a wonderful program on the history of Thai/Indonesian Textiles and their evolving weaving traditions including ikat and silk. Thank you Fran for the fascinating account.

The meeting came to an end.

◆ Respectfully submitted, Sally Johnston, Secretary

### Officers and Chairs

It takes a Village.

- President - Rebecca Winter
- Vice President - Mary Berent
- Vice President - Connie Griffin
- Secretary - Sally Johnston
- Treasurer - Mitzi Meyers
- Membership Officer - Dagmar Rapp
- Librarian - Sally Johnston
- Web Master - Vila Cox
- Newsletter Editor - Rebecca Winter
- Sample Exchange - Julie Gerrard
- Outreach Committee - Janet Stanger
- Social Media - Dyan Lay
- ANWG Representative - Connie Griffin
- Spinning Study Group - Dagmar Rapp
- Weaving Intensive Study Group - TBA
- Day Weaving Study Group - Jenni Jimmerson
- Beginning Weaving Study Group - Cindy Griewe
- Garment Study Group - Anne Oglevie
- COE Study Group - Mary Berent
- Lace Study Group - Vila Cox
- Thursday Fiber Friends Zoom - Jinks Hunter
- Tapestry Study Group - Cindy Schafer
- Pat Ann Fund Administrator - Doug Ranck
- Church of Christ Contact Person - Vila Cox
- Bowmont Church Contact Person - Rebecca Winter

### Website

<http://www.handweavers-guild-boise.org>

### Mailing Address

PO Box 6258, Boise, ID 83707



There was some excellent fiber learning happening over the weekend of April 22 - 24, at the workshop called "Color in Composition," by Cynthia Newman.  
~ Our Teacher & Examples of the completed weaving ~



#### Weaving Credits:

- Top Left - Cynthia Newman
- Top Right - Doug Ranck (Plants!)
- Center 2 - Katzy Luhning, front and reverse
- Bottom - Kelly Sandusky