

Connecting Threads

Handweavers Guild of Boise Valley
May, 2025

May Program: Annual Yarn and Equipment Sale

Our program for May is our annual yarn, equipment, & fiber sale. So clean out your stash and sort out your surplus and bring it to the sale! This is also your chance to buy bits & pieces you thought you would never find! The guild will receive 10% from the seller, the buyer will get good stuff, & the seller will receive compensation.

A win, win, win!!!

- ◆ Remember the seller marks their prices and collects their own money. Then they pay 10% of their sales to the Guild at the end of the sale. Give your payment to Kelly Sandusky.



Calendar of Events

Board Meeting

May 3, 2025 ~ 9:30 a.m. - 11:00 a.m.
Prior to the Regular Meeting at the Church
All members are welcome to attend.

Regular Meeting:

May 3, 2025 ~ 11:30 a.m.

Program ~ Yarn & Equipment Sale

At the First Congregational Church of Christ,
2201 Woodlawn, Boise, in the Banquet Room
Next meeting - June 7, 2025

Study Groups:

- April 29, 2025 ~ Garment Study Group
10:30 a.m. ~ At the new home of Anne Oglevie
Find her new address in the Membership List
- May 8, 2025 ~ Beginning Weaving Study Group
6:00 p.m. ~ At the studio of Sherry Bittner
- May 13, 2025 ~ Lace Study Group
10:00 a.m. ~ At the home of Sue Cathey

May 14, 2025 ~ Spinning Study Group
11:00 a.m. to 2 p.m. ~ At Rubaiyat Bookstore
314 S 6th Ave, in Caldwell

May 18, 2025 ~ Paper Study Group
1:30 p.m. ~ At the home of Rebecca Winter

May 20, 2025 ~ Day Weaving Study Group
10:30 a.m. ~ At the home of Jenni Jimmerson

May 31, 2025 ~ Tapestry Study Group
7:00 p.m. ~ At the home of Jamie Landry
Note the change of dates.

Every Thursday ~ Thursday Fiber Friends Zoom
2:00 p.m. ~ Meets on Zoom

June 8, 2025 ~ Save the Date ~ For Paper Making
At the home of Rebecca Winter
Further details TDA

Workshops:

September 19 - 21, 2025 - Diversified Plain Weave

~~~~~ All are welcome to all events! ~~~~~

## Dues are Due in June

At the April meeting the Guild voted to increase the yearly dues to \$35.00 per year.

The Board has devised an equitable plan for the transition of this dues increase. If you pay your dues prior to July 1, 2025, you will pay the previous rate of \$30.00. The Guild's Fiscal Year is from July 1 to June 30 each year. This means dues are due in June each year in order to be current for the upcoming Guild year.

Members will also be asked to fill out new Membership Forms and to update their preferences for information or image release.

Thank you for your continued support of our fiber organization.



## Election of Officers

The Election of Officers was held at the April meeting. The new officers will take over in June, 2025. The following were elected to lead us in the upcoming year, and these are the Board members representing you in our Guild:

- President – Katzy Luhring
- Vice Presidents – Robin Conrads  
- Lisa Baker
- Treasurer – Kelly Sandusky
- Secretary – Dyan Lay
- Membership Chair – Cindy Griewe

And Mary Berent rounds out the the Board as Past President.



## Workshop News

The Tapestry Workshop with Connie Lippert was a great success. It sounds like the 14 members were happy with all that Connie had to teach and share.

Diversified Plain Weave, by Vila Cox: Is coming to us on September 19-21, 2025. We are in the process of booking a venue for this exciting workshop and when finished will have the costs figured. If you are interested, you may sign up by sending me your information via email. Vila, is willing to take 18 for this class. It will fill fast so don't delay.

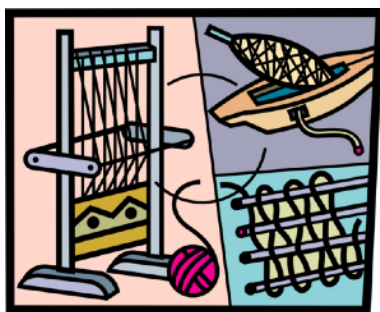
AN EXPLORATION OF DIVERSIFIED PLAIN WEAVE: Learn what makes DPW special. Threading, treadling, and tie-ups are just the start. During the round-robin workshop participants will weave samples and explore the effect color and yarn selection also has on DPW. Learn how to convert six shaft patterns into DPW and change existing DPW patterns. Discover what makes a design stand out in Diversified Plain Weave. Advanced Beginner to Intermediate weaving skills. Familiarity with profile drafts and weaving software is helpful as we explore how to create and modify DPW drafts. An eight-shaft loom is required.

♦ Jenni Jimmerson, Vice President

## Guild Fiber Demonstrations 2025

Our Demonstration Calendar has been filling up fast. Here are the dates, and I hope you can volunteer to demonstrate at one of them:

- May 4, Opening day for three Old Farm Days
  - \* Held at the Dry Creek Ranch in Hidden Springs.
- May 10, Sheep in the Foot Hills
  - \* Held at Avimore in Eagle.
- August 15 - 24
  - \* 10 days of fiber arts demos at The Idaho State Fair.
- September 28 Old Farm Days
  - \* At Dry Creek Ranch in Hidden Springs.
- September 27 - 28, Renaissance Fair
  - \* TBA
- October 4 - 5, Renaissance Fair
  - \* TBA
  - \* Due to construction and remodeling happening at the Fairgrounds, this activity may not happen.
- October 8 - 12, Trailing of the Sheep Festival
  - \* Sun Valley, Ketchum, Hailey area.



You can sign up for these demonstration times with me. See my contact information in the Membership List. We are looking for demonstrators for all fiber arts, not just spinning. I will also be sending out email requests with more information.

♦ Janet Stanger, Outreach Committee Chair



## President's Corner

Are you participating in a Weavers Guild study group? Study groups are the heart and soul of the Guild. They are active groups of individuals that have the same *specific* interests you have! The study groups are usually between 3 or 4 people and 12 or 15 people. Any member of the Guild may join any study group at any time. You don't need to commit to anything, you may just attend one or a few meetings, and see if that group is for you. Each study group works a bit differently as the topics for study are decided by the group itself. The times, frequency, and location(s) of the meetings are also decided by the group. Most of the Guild study groups meet once a month, but we have one (Intensive) which only meets once a year for three consecutive days! If you haven't taken advantage of this resource within the Guild give it a try, this Guild has a deep wealth of knowledge and talent that is available in our study groups.

p.s. Remember to pay your dues before the end of June!

◆ Mary Berent, President

{Editor's Note: Any member, or group of members, may start a Study Group at any time. Check out the Study Group Chairperson job description on the Guild's public website.}



## April Sample Exchange

This month's sample was woven for us by Rebecca Winter. The colors made me think of Spring. She used bleached white and yellow cotton with a novelty yarn for added interest. It was woven on a 4 harness loom in plain weave. When discussing her sample, Rebecca used a new term for me, "tracking," which I found interesting. Check out the sample box at the next meeting for some inspiration! If you would like to share your talents with the guild please sign up.

◆ Christie Farrin, Sample Chair



**To participate in Tour de Fleece 2023 HGBV You Need to:**

1. Be a guild member
  2. Set a Personal Goal for the Fiber Craft of your choice (Spin, weave, other fiber craft)
  3. Send a description and photo of your project/goal to [boiseguild@groups.io](mailto:boiseguild@groups.io) BY June 30.
  4. Send a description and photo of your project at end of tour to [boiseguild@groups.io](mailto:boiseguild@groups.io) by July 30.
- Questions? Please read the following Details section. Still have questions - Contact me at - Jinks Hunter 208-867-2953 (texting is good, include your name) or [jehunter101@gmail.com](mailto:jehunter101@gmail.com)

**Details:**

**Tour de Fleece** is a three week fiber event that runs concurrently with the Tour de France bicycle race. Tour de Fleece is traditionally spinning, but we have added weaving and other fiber arts to include all guild members who want to participate. References to Color, Rest and Time-Trial are a nod to the Tour de France bicycle race.

**The point of our Tour de Fleece** is to take on a personal goal that challenges you in your craft and work towards that goal every day except designated rest days. Make it realistic to fit your available time, but push yourself some. Make it yours. Make it fun!

Goal examples:

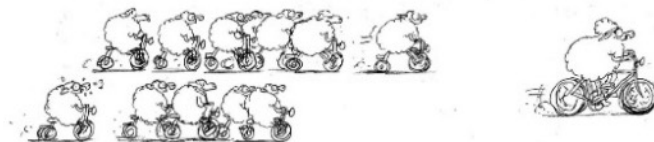
- Spinning an amount of fiber
- Weaving or creating something specific - an object/garment in a fiber related craft
- Working on your goals for a specified time daily
- Learning a new technique to becoming more proficient on a wheel/ loom/etc.

**TdF2025 Calendar** (to come w next Newsletter) The activities in this calendar are optional. Have fun with them or ignore if too distracting from your main goal. To show color, etc. in these activities, you can spin or or if weaving - wrap yarn around cardstock or make a cardboard loom to show examples.

**Share with the guild** - send pics of your progress and calendar activities to [boiseguild@groups.io](mailto:boiseguild@groups.io)

**TdF Traveling Award** Show creativity and a bit of whimsy in finding the ***most interesting crafting place!***

- Take your project along on your travels and wanderings and snap a pic of you creating in a fun or unusual place. - Be sure to send pic of you crafting and the name of the place to [boiseguild@groups.io](mailto:boiseguild@groups.io).
- One person will be selected to win this very special award created to display in your home for the year
- Note: Weavers - if your personal goal involves a regular size loom, then take along a tiny or cardboard loom to weave on or cardstock to wrap with yarn to create in your most interesting place. Spinners – a drop spindle might be in order here. Be creative, original, spontaneous! Get out there and create in someplace interesting!



## Study Groups:

### Spinning Study Group

For May, try a new to you spinning or plying technique. Then come share your results at our monthly Spinning Study Group at our favorite bookstore, The Rubaiyat, located in downtown Caldwell, Idaho. We're having fun from 11-2!

- Jeannie Phillips, Study Group Chair

### Lace Study Group

The Lace Study Group will meet at Sue Cathey's house on May 13<sup>th</sup> from 10am to 12pm.

- Vila Cox, Study Group Chair

### Beginning Weaving Study Group

The beginners weaving group will be at Sherry Bittner's studio on May 8 at 6 pm.

- Sherry Bittner, Study Group Chair

### Tapestry Study Group

The Tapestry Study Group will be meeting **Thursday, May 31**, at 7pm and Jamie Landry's house. **Please note this is not on our normal day.** Also, we will not be meeting in June or July, but will be back on schedule in August. We will continue to work on our exploration of Wedge Weave.

- Kelly Sandusky, Study Group Chair

### Day Weaving Study Group

This month we are meeting on May 20<sup>th</sup> at the home of Jenni Jimmerson. Time will be 10:30 am. Please bring your projects, questions and comments to share; we all learn from each other so much! I always come away with something new.

- Jenni Jimmerson, Study Group Chair

### Paper Study Group

We will meet on May 18, at my house at 1:30 p.m. Our focus for this meeting is to talk about paper making. This is in preparation for gathering to actually make paper in June. So study how paper is made and come with information to share.

Save the date - On June 8th we will be making paper at my house.

- Rebecca Winter, Study Group Chair

### Garment Study Group

The next Garment Study group will be held on Tuesday, April 29, 2025, at 10.30am. We will meet at my new home. Everyone is welcome. Please call Anne Oglevie if there are any questions.

- Anne Oglevie, Study Group Chair

### Thursday Fiber Friends

We are an informal group who meet at 2pm every Thursday via zoom. We work on our projects, help each other with project questions and chat about whatever comes up. We feel free to stay the whole time (and make some progress on that project) or just pop in for a bit of time for a quick catch up when busy with other stuff. We're very flexible - please feel welcome to join us.

- Jinks Hunter, Study Group Chair



### Regular Meeting Minutes ~ April 5, 2025

Call To Order at 11:31AM

- Present were 48 attendees: Mary Berent, Dyan Lay, Rebecca Winter, Robin Conrads, Vila Cox, Kelly Sandusky, Cindy Griewe, Jenné Schiffhauer, Veronique Hager, Jessica Clipson, Sally Johnston, Emily Wall, Irene Chandler, Karen Snyders, Jean Zaske, Mary M. Donato, Susan K. Inouye, Pat Dayton, Sherry Bittner, Katzy Luhring, Cynthia Newman, Alyssa Bangs, Eddie Van Hout, Janet Stanger, Kathy McGowen, Karen Fox, Esther Kleinkauf, Bess Kaczmazek, Jim Kaczmazek, Mary Anne Davis, Zena Zaleski, Robi Hathorn, Irma Atkinson, Cindy Schafer, Julie Gerrard, Jamie



Landry, Nancy Swenson, Jinks Hunter, Raelene Viste, Lisa Baker, Nancy Alzola, Melanie Sherman, Sheila Miller, Chelsea Grigsby, Julie Gardin, Christie Farrin, Suzanne Price, and Lee Turner.

### Welcome and Introductions

- Welcome by President Mary Berent with member introductions by name and favorite flower.

### Show and Tell

- Suzanne Price presented her Christmas weaving piece.
- Kathy McGowan brought a Guatemalan woven wall hanging and Temari balls.
- Pat Dayton showed a Lunatic Fringe 5/2 cotton lap blanket for her daughter.
- Lisa Baker presented a Tencel blue/grey woven scarf.
- Cindy Griewe passed around a Lunatic Fringe 22 natural green cotton fall scarf.
- Irene Chandler brought a piece from the 70s used to make towels.
- Emily Wall showed her crocheted oval rug with acrylic yarn and a knit tube felted and cut open.
- Mitzi Meyers presented a cotton triangle shawl in blues and purples.
- Jamie Landry has been making a watercolor book from an old address cover, a decorated Altoids box for her watercolor palette, and a felted bag to carry them both in.
- Kelly Sandusky discussed several tatting books that she got from a yard sale and that Barbara Redmond was holding a yard sale as well as showed an adorable double-knit sheep cowl.
- Cindy Schafer asked about an item that turned out to be a ring vise.
- Mary Anne Davis wore a pink ribbon committee wool plaid shawl from Scotland.
- Zena Zaleski spun some lovely three ply.
- Robi Hathorn had a woolen sweater, locally hand-dyed and hand spun.
- Irma Atkinson showed her woven piece from Linda Morton-Keithley's class at Yarnegeddon.
- Sheila Miller passed around an African violet crocheted pot.
- Lee Turner brought a knitted wrap done during Festival of Stitches.
- Chelsea Grigsby presented her woven napkins done from Robin's draft from the intensive on her new loom.

### Business

- 2025-2026 Board Nominations
  - Rebecca Winter explained the voting process and ballots were passed around.
  - Mitzi Meyers announced 46 unanimous yeses for the slate of officers.
- Dues Increase
  - Mary Berent explained the rent increase for the Church facility.
  - Rebecca Winter moved to increase the Guild dues from \$30 annually to \$35 annually starting July 1, 2025.
  - Kelly Sandusky seconded, and the membership unanimously approved the motion.
- Credit Card Payments Accepted
  - Annual membership payments can now be made on the Guild's website.
  - Workshop and other payments will be coming soon.

### Board Reports

- Vice President – Jenné Schiffhauer
  - Katzy Luhring will be presenting color theory for today's program.
  - Next month's program will be the annual yarn and equipment sale. Mary Berent provided more details on how the sale works.
  - The June potluck is being planned now.
- Vice President – Mary Berent for Jenni Jimmerson
  - Connie Lippart's Wedge Weave workshop is this month.
  - The next workshop will be presented by Vila Cox the weekend of September 19. It will be a round robin style workshop on diversified plain weave on eight-shaft looms.
  - Looms can be rented from the Guild; talk to Vila Cox for more information.
- Treasurer – Kelly Sandusky
  - Kelly spoke of the 2025-2026 budget which saw the addition of the website line item and the updated facility rental cost.



- Mitzi Meyers moved to accept the budget as printed in the March newsletter and explained by Kelly.
- Kathy McGowan seconded, and the membership unanimously approved the motion.
- Secretary – Dyan Lay
  - Dyan reminded members in attendance to sign in.
- Membership – Cindy Griewe
  - Cindy announced that the Guild is 110 members strong.
  - Membership dues can be made online, by mail or in person.
  - Each member needs to fill out a new membership form each year; the membership form has been consolidated with the interest section being relegated to groups.io poll in the future.
  - Dues are due by June 30, 2025.
- Study Groups – Mary Berent
  - Study Groups are listed in the newsletter each month.
  - 2026 Intensive
    - The Intensive is scheduled for Martin Luther King weekend in January 2026. The Intensive committee is Chelsea Grigsby, Kelly Sandusky, Cindy Griewe and Rebecca Winter. The topic will be double weave.
  - Kelly Sandusky announced the tapestry study group is looking for a leader; anyone interested please talk to Kelly or Cindy Schafer.
  - Vila Cox announced that the Guild has a new Schacht tapestry loom that is available to rent.
- Outreach Committee – Janet Stanger
  - Janet explained that the Schick-Ostolasa Farmstead opens May 4 and needs demo volunteers from 11:30-4PM; all forms of fiber arts are accepted.
  - The Sheep in the Foothills event is May 10 from 10:30-4PM; interested volunteers should contact Janet.

Meeting adjourned at 12:15PM. The program was Color Theory from a Lunatic Perspective presented by Katzy Luhring.

◆ Respectfully submitted by Dyan Lay, Secretary



Our Guild is now part of The Woolery's Guild Reward Program! The Woolery offers an easy way for our members to support our Guild by purchasing through our unique shopping link. Our Guild will receive 5% back from the total order value when you use the link below.

This is a great way to earn money and support the Guild by doing things you would already be doing: buying yarn, supplies, books, etc.!

Buying link: <https://woolery.com?aff=440>





## Guild Affiliate Program Handweavers Guild of Boise Valley

Coupon Code:  
**2025hwgbv**

Use this code on our website to save  
5% on your order &  
earn 5% for your guild!



[www.LunaticFringeYarns.com](http://www.LunaticFringeYarns.com)

(800) 483-8749



### Officers

- President - Mary Berent
- Vice President - Jenné Schiffhauer
- Vice President - Jenni Jimmerson
- Secretary - Dyan Lay
- Treasurer - Kelly Sandusky
- Membership Officer - Cindy Griewe
- Past President - Rebecca Winter

### Chairs

- Librarian - Sally Johnston
- Web Master - Robin Conrads, Dyan Lay
- Equipment - Vila Cox
- Newsletter Editor - Rebecca Winter
- Pat Ann Fund Administrator - Katzy Luhring
- Sample Exchange - Christie Farrin
- Outreach Committee - Janet Stanger
- Social Media - Dyan Lay
- ANWG Representative - Connie Griffin
- Spinning Study Group - Jeannie Phillips
- 2026 Weaving Intensive Study Group
  - \* Kelly Sandusky
  - \* Rebecca Winter
  - \* Chelsea Grigsby
  - \* Cindy Griewe
- Day Weaving Study Group - Jenni Jimmerson
- Beginning Weaving Study Group - Sherry Bittner
- Garment Study Group - Anne Oglevie
- Lace Study Group - Vila Cox
- Thursday Fiber Friends Zoom - Jinks Hunter
- Tapestry Study Group - Jaimie Landry
- Paper Study Group - Rebecca Winter
- Tour de Fleece - Jinks Hunter
- Church of Christ Contact Person - Vila Cox
- Bowmont Church Contact Person - Rebecca Winter
- Eagle Fire Station #1 Contact Person - Julie Gerrard
- Fairview Terrace Community Center Contact Person - Brenda Hatch
- Post Office Box Name Holder - Mitzi Meyers
- Mail Collector - Mitzi Meyers

### Website

<http://www.handweavers-guild-boise.org>

### Mailing Address

PO Box 6258, Boise, ID 83707

