

# Connecting Threads

Handweavers Guild of Boise Valley ~ November, 2025

## November Program: Double Weave – What’s Possible, by Mary Berent

In preparation for the Weaving Intensive coming up in January, this program will focus on some of the different double weave techniques that are possible with 4 and 8 shafts. As the name implies, the techniques weave more than one layer at the same time. It’s possible to weave double width, allowing you to weave a wider blanket on a 36” loom. Also possible is weaving pockets that may be stuffed or filled with sequins or buttons. Ten different techniques will be introduced with lots of pictures and lots of samples. You’ll have a hard time deciding what you would like to explore and bring for the Intensive!!

◆ Robin Conrads, Vice President



## Calendar of Events

### **Regular Meeting:**

November 1, 2025 ~ 11:30 a.m.

**Program ~ Double Weave,- What’s Possible,  
by Mary Berent**

At the Boise First Congregational Church of Christ,  
2201 Woodlawn, Boise, in the Banquet Room  
Next meeting - December 6, 2025

### **Study Groups:**

November 9, 2025 ~ Rigid Heddle Study Group  
2:00 p.m to 4:00 p.m.~ At U of I classroom,  
1902 E Chicago St Caldwell

November 11, 2025 ~ Lace Study Group  
10:00 a.m. ~ At the home of Raelene Viste

November 12, 2025 ~ Spinning Study Group  
11 a.m. to 2 p.m.~ At Rubaiyat Bookstore  
314 S 6th Ave, in Caldwell

November 13, 2025 ~ Beginning Weaving Study Group  
6:00 p.m.~ At the home of Rebecca Winter

November 16, 2025 ~ Paper Study Group  
1:30 p.m.~At the home of Rebecca Winter

November 18, 2025 ~ Day Weaving Study Group  
10:30 a.m.~At the home of Jenni Jimmerson

December 30, 2025 ~ Garment Study Group  
10:30 a.m.~At the home of Julie Gerrard

Every Thursday ~ Thursday Fiber Friends Zoom  
2:00 p.m. ~ Meets on Zoom

Tapestry Study Group

See Note for this group under “Study Groups,”  
later in this Newsletter.

### **Weaving Intensive Study Group:**

January 17, 18 & 19, 2026 ~ Topic: Doubleweave

### **Learn to Weave Weekend ~ Study Group:**

April 18 & 19, 2026

### **Workshops:**

June 19, 20, & 21, 2026 - Understanding Profile  
Drafting. by Deb Essen

~ See more information later in this ~  
Newsletter for the above 3 events.

To find Member Contact Information, Log-In to  
your [groups.io](https://groups.io) account and look in “Files” for  
the Membership Directory.  
The link to the BoiseGuildGroup is [HERE](#).

~ All are welcome to all events! ~

## President’s Letter:

Once again it is my favorite time of year! Fall. Warm summer afternoons with bright blue skies. The ability to clearly see the mountains again as the rain comes and clears out the air. And don’t forget about Pumpkin Spice. It sounds so inviting and now epitomizes fall in commercials, songs, and recipes.

To tell the truth, when I first heard about Pumpkin Spice Lattes, I couldn’t figure out why anyone would want to put Pumpkin in their Coffee. Then I realized it was Pumpkin Spice in the coffee, meaning cinnamon, cloves, and nutmeg. Ahh. The emphasis on Spice! Silly me and my vivid imagination! Spices can be so useful!



Years ago, I learned about using the concept of spice in crafting. Adding spice can mean a little pop of color, texture, or unusual materials to add interest to the textile. Have you done this? Adding a little bit of an accent color to a wool batt during the fiber prep? Or adding a small colored stripe in an unusual color into a woven fabric? Those little accents of spice can take your textile designs from interesting to extraordinary!

And speaking of designing textiles, don't forget about crafting your napkin for the President's Challenge. I have been hearing from your fellow guild members that they are starting to create their napkins. I am so excited to see them all in December! Remember that it needs to be at least 10" square when finished and somehow crafted by you for your fellow guild member. You can weave a napkin, dye a piece of fabric to turn into a napkin, knit it, tat a border or otherwise create that napkin. I hope this project is challenging you to think about your guild mate and use your imagination to create that useful textile for them!

I also look forward to seeing everyone at the November meeting on the 1<sup>st</sup>. The meeting will be at the usual time. Doors open at 11:00 and the meeting begins at 11:30. After we discuss business, see everyone's show and tell and have a short break for visiting the library, Mary Berent will be giving a program on Doubleweave. This happens to be the topic for the January Weaving Intensive, so come and be inspired! And don't forget to sign up for the Intensive! See you there!

◆ Katzy Luhring, President

### Librarian Message

We have had a couple of books borrowed from the Guild Library recently without a card being signed. Please remember to sign a card for each item borrowed. If there is no card with the item, contact the Librarian or the Historian. If a friend notices your are returning an item, and they wish to borrow it also, contact the Librarian. The instructions are posted on the wall above the table, so if you forget just give them a quick read.

Place returned items in the larger basket on the table. Place library cards in the smaller basket on the table. Thanks so much for helping us care for one of the most important guild assets.

◆ Sally Johnston, Librarian

### Outreach 2025 Events

We have successfully completed this year's scheduled demonstrations. Everyone that participated had fun, and their participation is extremely appreciated. As you know, it is the public display of our skills which is one of the ways we draw new members to our Guild.

We have received a thank you e-mail from the Old Farm Days. They again request our demonstration skills on their opening Saturday and at Farm Days on their closing day in 2026. The Fair has also asked us return for next year. I don't know exactly what happened with the Renaissance Fair, except I was told we had not filled out an application. Therefore, they did not reserve a place for us.

I am constantly looking for places to demonstrate, but it is good to have a breather and regroup. Now is the time to consider volunteering to help demonstrate our skills in the coming year. Looking forward to a great new year.

◆ Janet Stanger, Outreach Committee

### Study Groups:

#### Tapestry Study Group

Editor's Note: There were no participants in attendance at Jamie's for the October 16th meeting. Jamie also reports she will be away for the next two meeting times. Participants may like to have conversations about whether to continue this study group at this time.

#### Spinning Study Group

Please join us at the Rubaiyat Bookstore for our monthly meeting while we enjoy spinning and tea from 11-2 in downtown Caldwell, on November 12. All are welcome to join us from total newbie to master spinner. We look forward to seeing you soon.

◆ Jeannie Phillips, Study Group Chair



## Lace Study Group

Meets November 11 - 10am to 12pm at Raelene Viste's.

- ◆ Vila Cox, Study Group Chair

## Beginning Weaving Study Group

The beginning weaving group will meet at Rebecca Winter's home on November 13, at 6 pm. The topic for this month is "Looms."

- ◆ Sherry Bittner, the Very Happy Beginning Study Group Chair

## Day Weaving Study Group

Day Weaving group will meet on November 18 at the home of Jenni Jimmerson, west of Caldwell. We meet at 10:30 until about 1:30 pm. Jenni's address can be found in the Guild directory. This group discusses all things weaving from simple to complex weaving topics. All guild members are welcome to attend.

- ◆ Greta Ankeny, Study Group Chair

## Rigid Heddle Study Group

Our Sunday, November 9, meeting will be held at a new location in Caldwell, at U of I classroom, 1902 E Chicago St., Caldwell. We will meet from 2-4pm. Bring your loom if you wish to weave together on your napkins. We will be sending a reminder 1 week prior to the meeting. If you are unable to attend in person, find the Zoom link in the reminder email.

- ◆ Jinks Hunter & Jenne Schiffhauer

## Paper Study Group

The Paper Study Group will meet on November 16, at 1:30 pm at Rebecca Winter's house. Bring your Show and Tell to share, and plan to share any new study information you have found. Our focus is using paper and any cutting utensils you may like to use. Also consider using a daily practice as you create.

I also ran across a new topic that I need to look into, called "Letterlocking." What paper process have you read about lately?

- ◆ Rebecca Winter, Study Group Chair

## Garment Study Group

Garment group will meet in Boise at the home of Julie Gerard on Tuesday, December 30th, at 10.30am. All are welcome & please contact Anne Oglevie for further information.

- ◆ Anne Oglevie, Study Group Chair

## Thursday Fiber Friends

We are an informal group who meet at 2pm every Thursday via zoom. We work on our projects, help each other with project questions and chat about whatever comes up. We feel free to stay the whole time (and make some progress on that project) or just pop in for a bit of time for a quick catch up when busy with other stuff. We're very flexible - please feel welcome to join us.

- ◆ Jinks Hunter, Study Group Chair



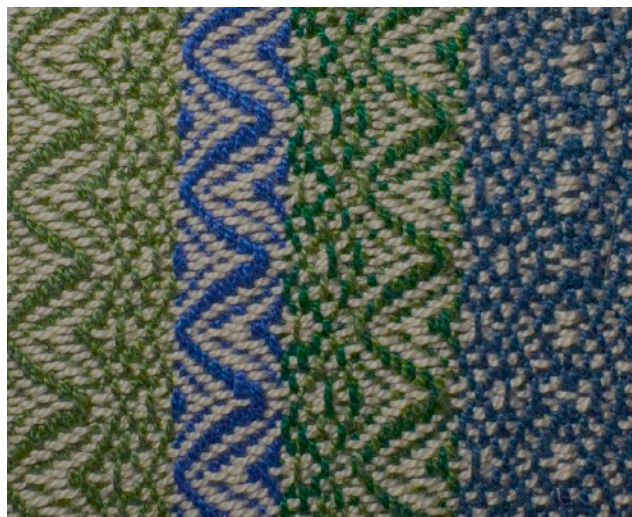
## Sample Box

Happy fall colors, cozy sweaters, pumpkins and crisp mornings!

This month's sample was made for us by Kelly Sandusky. It's a twill with twill derivatives, woven in 5/2 cotton. Kelly made this beautiful cloth for chair cushions. Thank you Kelly for inspiring us this month!

Please consider putting a little extra on the loom next time you weave or create something and share it with the guild. Only one person has signed up so we're in need of your skills and creativity!

- ◆ Christie Farrin, Sample Box Chair



# 2026 Weaving Intensive Study Group

## Doubleweave

A Weaving Retreat, with Weaving Presented by Each Participant  
Saturday, Sunday, and Monday - **January 17, 18 & 19, 2026**  
9 AM to 5 PM - Location: University of Idaho R&E Center  
1902 E. Chicago St., Caldwell, ID 83605  
Fee - \$35.00 - A Great Value!



- This is our usual “teacherless” workshop-style event. We each have the opportunity to be the expert in our chosen area of study related to Doubleweave.
- Choose a favorite type of Doubleweave to share with the group.
- Study your topic and create a sample warp, which demonstrates what you have learned.
- Choose any yarn that is appropriate for the draft and design.
- Provide all the materials needed to weave all the samples on your loom. Calculate your warp length by the number of possible samples needed, which is the number of participants in the Intensive. Generally, if you are planning about 6-inch long samples, 4 to 5 yards will suffice. Warp width is best at about 6 inches, or a width needed to show your design.
- Mentors are available prior to the workshop to guide you in your study or help you prepare!
- This is a round robin workshop. Each person moves from loom to loom weaving samples on the looms of other participants. Weave as many as you wish.
- At the beginning of the Intensive each participant will present their Doubleweave study to the group, and give instructions for weaving. Plan for the presentations to be about 8 to 10 minutes. If you need help with presenting, the mentors are available to assist and reassure.
- You may wish to weave your own sample ahead of time so you can teach from experience how the sample works. An additional possibility is to cut your sample from the loom and retie. This gives you the opportunity to show finishing methods applicable to the sample. These steps are optional.
- We recognize, and also value, the camaraderie and social aspect of the Intensive. We envision this opportunity to have great potential for experimentation and learning. Just think of the benefit of three days of discussion and exploration with others of like mind.
- We ask you to submit printable project plans and draft sheets (electronic or hard copy). Each participant will receive a binder containing all of the plan sheets and drafts.
  - ~ **Please include all information required for reproducing this cloth.** This includes 6 things - threading, tie-up, treadling, yarn, sett, and colorway.
  - ~ We need more than just a .wif file.
  - ~ Additional notes about what you learned are also wonderful to have. There are Weaving Record Sheets available in the Library and on the Guild website [HERE](#).
  - ~ Send all your weaving record information in printable form to Rebecca Winter by January 3, 2026.
- Bring your loom warped and ready to go. Bring yarn & equipment, such as shuttles & bobbins, to weave samples on your loom. Bring waste yarn to frame the samples you weave & labels to identify them. Bring scissors or other necessary tools. Bring basic loom tools & anything needed for possible repairs.

### The Fine Print:

- ★ The workshop is open to guild members. If non-members wish to attend the Intensive, we invite them to join the guild.
- ★ There are Guild Looms available. No rent is assessed for Guild Workshops or Intensives.
- ★ Keep this information available, as it is the only pre-Intensive information you will receive.
- ★ Your payment of the fee is your confirmation for participation in this event.
- ★ The Guild will accept cancellations with a refund through January 3, 2026. After this date cancellations will be considered on an individual basis.
- ★ Bring sack lunches, drinks, snacks to share as you wish.

Return the following information with your fee to Kelly Sandusky or Cindy Griewe. Or you may wish to pay online.

Find the online registration page on the Guild Public Website [HERE](#).

Name \_\_\_\_\_ Phone \_\_\_\_\_

Email \_\_\_\_\_ Fee amount included \$ \_\_\_\_\_



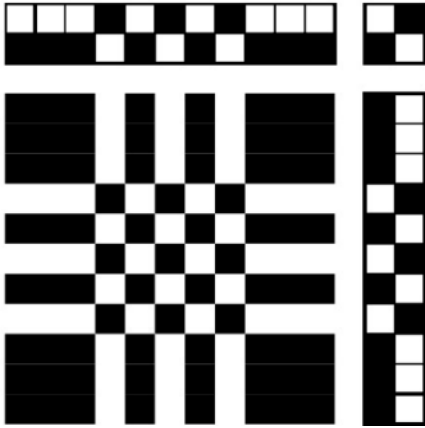
# UNDERSTANDING PROFILE DRAFTS

with Deb Essen

June 19, 20, 21 - 2026

Fairview Terrace Community Center – Meridian, ID

Have you seen drafts like this and wondered how you use it to create fabric?



Learn how to use profile drafts as a powerful weaving design tool! We will learn how to translate a profile draft into thread by thread drafts for several weave structures.

We will also discuss what kind of weave structures can use profile drafts and what structures can't. Samples in round robin format, so everyone will go home with a sample of at least 5 weave structures discussed in class and have a chance to play with them.

The workshop is open to members of the Handweavers Guild of Boise Valley and will be held June 19 – 21, 2026, at the Fairview Terrace Community Center in Meridian. If you would like to attend the workshop but are not a member of the Guild; memberships are just \$35.00 <https://www.handweavers-guild-boise.org/>.

The cost of the workshop will be determined by the number of attendees, but should be in the realm of \$150.00 to \$175.00. For comparison, workshops like this that are offered at conferences such as ANWG usually charge ~ \$400.00.

Students will bring their table or floor loom un-warped, because students will be warping looms in class (students must be comfortable warping their looms independently). Pre-class instructions will be sent to attendees in May. The class is geared toward advanced beginners through intermediate weavers.

If you have any questions about the workshop, please contact Lisa Baker or Robin Conrads: email addresses are available through the Guild's groups.io site.



**Deb Essen** lives, weaves, and runs her business *dje handwovens* in the Bitterroot Valley, nestled in the Rocky Mountains of western Montana. In 2004, Deb achieved the Certificate of Excellence in Handweaving-Level 1 through the Handweaver's Guild of America. In 2011 she was inducted to the Montana Circle of American Masters in Folk and Traditional Art. Her book, [Easy Weaving With Supplemental Warps](#), was published originally by Interweave Press in 2016. In 2022, the book was re-released as an expanded revised edition, with more projects and weave structures, by Schiffer Publishing. She has recorded five weaving videos, available through Long Thread Media, ranging from supplemental warps to profile drafting and has written multiple feature articles for [Handwoven](#) and [Little Looms](#) magazines. Deb is passionate about teaching about the wonders of weaving and teaches at shops, guilds, regional and national conferences and festivals.



# LEARN TO WEAVE WEEKEND 2026

**SAVE THE DATE:** APRIL 18-19, 2026

**LOCATION:** Fairview Terrace Community Center

**CONTACTS:** Cindy Griewe or Robin Conrads

**REGISTRATION:** to open in January 2026

**LIMITED** to 14 learner-participants (with approx. 6 mentors also invited)

## Description

- Bring your loom, shuttle, and weaving tools to this 2-day weekend of learning to experience the basics of drafts, warping, and weaving.
- Basic instruction, discussion, and mentor assistance will help you better understand the art of weaving.
- Cost TBD, but will probably be around \$40.00.

## Specifics

- Rigid heddle or shaft looms (table or floor) can be used for this weaving experience. Some looms are available on loan from the guild on a first come first serve basis.
- Warp will be provided to create approximately 6 dishcloths in either twill or plain weave.



## Board Meeting Minutes ~ October 4, 2025

Members present:

President – Katzy Luhring  
Vice President – Lisa Baker  
Vice President – Robin Conrads  
Secretary – Dyan Lay

Treasurer – Kelly Sandusky  
Membership Officer – Cindy Griewe  
Past President – Mary Berent  
Rebecca Winter, Newsletter Editor  
Vila Cox, Equipment Chair

President's Report

- Katzy called the meeting to order 12:51PM.
- President's Challenge
  - During the break at the Regular meeting later today, names will be drawn to match up challenge participants.
  - 17 members have signed up so far, which, per Mary, that is a good response compared to past Christmas exchanges.

Vice Presidents' Report

- Monthly Meeting Programs



- Lisa said that six members had signed up for today's program: Tips & Tricks.
- Robin is working on solidifying the January mini-workshop program.
  - Esther will be doing Kumihimo, and Rebecca will offer a paper pamphlet.
  - The membership will be asked today for two more volunteers to present a mini workshop.
- March is fiber yarn structure and types: the benefits, drawbacks and types (linen, cotton, wool, etc.). Robin may create a vocabulary list, and there may be stations.
- As liaison to the Fairview Terrace Community Center, Rebecca will be in Michigan teaching the end of April and May.
- The VPs are working on locations for the December and June potlucks, and there was discussion about locations for workshops and the intensive.
- 2026 Workshops
  - Deb Essen contract is signed for a June 19-21 workshop at the Fairview Terrace Community Center.
    - Lisa will send information to the membership on workshop details as well as create a flyer and sign-up sheet before the November Regular meeting.
    - Cost will be about \$140-150 per person.
  - Online Payments
    - The Guild will offer an online payment option for workshops.
    - If the participant cancels, the cost of the workshop may be refunded but the Square transaction fee will not.
    - If the Guild cancels, the workshop cost, and the Square transaction fee will be refunded.
    - The Board reiterated the need to be certain an event is happening before making online payment available. Holding checks, the Guild's current practice for workshops, was also discussed.
- 2027 Workshops
  - Lisa mentioned the groups.io poll elicited about 20 responses.
  - Various workshop topics, teachers, timing and locations were considered.
- General Discussion
  - The Board discussed opening up workshops to neighboring guilds/states.
  - Lisa will read the Pat Ann Fund policy and return to the Board with possible use cases.
  - Dyan volunteered to follow in Cindy's illustrious footsteps for the planning and setting up of the Beginning Weaving "Learn to Weave" weekend for 2027.

#### Treasurer's Report

- Kelly mentioned that the Guild is not receiving the library rent invoice monthly.
- Invoices were paid for the Zoom license and the PO Box.
- She discussed savings account activity as well as CD management and acquisition.
- The Pat Ann Fund was used for Vila's recent workshop to defray participant costs.

#### Secretary's Report

- Zoom invoice was paid by Dyan.

#### Membership Report

- Membership List
  - Cindy urged the Board and will mention at today's Regular meeting to double check the printed membership list she will provide.
  - She will incorporate those changes and send a digital copy after the October meeting to the membership via group.io email.
  - There will be a link in the upcoming newsletter to the groups.io folder that contains the membership list.

#### Equipment Chair

- Lisa mentioned she has a screen to donate to the Guild, but it was deemed too small.
- Vila suggested the Guild purchase a portable, foldable screen, and provided pricing and details.
  - Kelly made the motion to empower Vila to purchase the screen and stand.
  - Cindy seconded, and the Board unanimously approved the purchase.

#### Newsletter Editor

- Advertising
  - Rebecca brought up newsletter ads for discussion.
    - There will remain a modest cost for newsletter ads with artwork being provided by the advertiser.
  - Social media advertising will be free.
  - The Board reinforced an earlier ruling that no ads would be put on the website, keeping it an ad-free zone.
    - The Affiliates page will provide links to those programs and can be accessed at any time by website visitors.



- The policy needs to be updated to remove ad payments for the membership directory which is now completely digital.

ANWG 2027 Conference in Portland, Oregon

- Mary announced that the Board's offer to ANWG to create the 2027 nametags was accepted.
  - Rebecca volunteered to lead the nametag committee.
  - Dyan moved to accept Rebecca at committee lead.
  - Kelly and Mary seconded the motion, and the Board unanimously approved.
  - The ANWG nametag topic will be discussed with membership at the November 1 Regular meeting.

The meeting was adjourned at 2:15PM.

 Respectfully submitted by Dyan Lay, Secretary

## Regular Meeting Minutes ~ October 4, 2025

Call To Order at 2:52PM

- Present were 36 attendees: Katzy Luhring, Dyan Lay, Vila Cox, Robin Conrads, Lisa Baker, Cindy Griewe, Kelly Sandusky, Rebecca Winter, Suzi Todd, Mitzi Meyers, Susan Inouye, Kari Lawton, Marita Turner, Venus Kadre, Hanna Meinikheim, Alyssa Bangs, Josephine Richstad, Karen Snyders, Christie Farrin, Zena Zaleski, Cynthia Brandt, Paulette Esposito, Nancy Swenson, Sherry Bittner, Kate Holestine, Tom Thompson, Sally Johnston, Mary Ann Davis, J Withers, Casey Holland, Tessa Stone, Connie Griffith, Mary Donato, Emily Wall, Raelene Viste and Tracey Stringer.

Business

- President – Katzy Luhring
  - Katzy welcomed everyone, asking each member to introduce themselves and say what their favorite fall color is; there are 4 new members.
  - She went on to explain the President's Challenge and the choosing process at the break today.
- Vice Presidents – Lisa Baker and Robin Conrads
  - Robin mentioned the Tips & Tricks program after today's business.
  - Next month's Regular meeting program is Mary Berent's Doubleweave.
  - Lisa discussed the June workshop by Deb Essen; registration should be available at the November Regular meeting.
  - She also reminded members to take the groups.io survey in order for the Board to concentrate their efforts on workshops tailored to the membership's needs.
  - Cindy Griewe spoke of mid-April's Learn to Weave weekend for all looms. Vila Cox has Guild equipment to borrow, and registration will be available at the January Regular meeting.
  - Rebecca Winter announced the Intensive in January on MLK weekend. The topic is double weave; flyers are available and in the newsletter. Registration is now open, and the cost for members is \$35. The library has double weave books, and the class is for four-shaft or two-heddle looms.
- Treasurer – Kelly Sandusky
  - Kelly said that the Guild has money, and CDs were renewed as they were used for library insurance.
  - She also explained the benefits of the Pat Ann Education fund that supplements Guild workshops and educational events.
- Secretary – Dyan Lay
  - Dyan reminded attendees to sign in.
  - Dyan will be doing the annual Zoom link reset and will send study group chairs new Zoom links.
- Membership – Cindy Griewe
  - Cindy announced that the Guild currently has 115 members.
  - If anyone is uncertain of their membership status, they can talk to Cindy or consult the did-you-pay list for confirmation.
  - The membership directory is all digital which Cindy will send through groups.io after the October Regular meeting. The digital file is always accessible in groups.io under Files.
- Study Groups
  - Rigid Heddle – this group meets regularly the Sunday after the Regular meeting; the next meeting is at Lunatic Fringe Yarns in Fruitland.
  - Day Weaving – this group meets the third Tuesday of every month; the next meeting is on October 21 at Julie Gerrard's.
  - Beginning Weaving – Sherry Bittner: this group meets the second Thursday of every month at 6PM; the next meeting is at Lunatic Fringe Yarns with different topics each month.



- Paper – Rebecca Winter: this group meets the third Sunday at 1:30PM; the next meeting is October 19 at Rebecca’s house.
- Chairs
  - Sample Box - Christie Farrin
    - > Christie pointed out the Sample Box and explained that a sample is available each month.
    - > This month’s sample was done by Julie Gerrard.
  - Outreach Committee – Janet Stanger
    - > Renaissance Faire demonstrators are no longer needed as the Faire organizers have no room for the Guild booth.
- Mystery Bag
  - The mystery bag for spinners was passed from Nancy Jensen to Kari Lawton this month.
- Yarny Social
  - Kari Lawton invited members to the Yarny Social on October 23-25 for crochet learning and shopping.

Show and Tell

- Hanna Meinikheim brought tiny knit ornaments, used fiber art books she found on her recent trip to the Oregon Coast and spoke of her visit to the Latimer Textile Center. The latest exhibit there is button quilts, and she bought some chenille yarn.
- Robin Conrads modeled a shirt she made out of her own woven fabric, as well as told of a honey trunk sale during the break (she’s also a beekeeper).
- Rebecca Winter showed her diversified plain weave workshop binder.
- Vila Cox announced she will be at Trailing of the Sheet in Ketchum October 8-12.
- Tessa Stone passed around a Kumihimo green bag.
- Mary Ann Davis showed her tie-dye piece.
- Kari Lawton brought a crescent shawl and gave details of the upcoming Yarny Social.
- Emily Wall is moving so during break will have her own fiber trunk sale to pare down her stash.
- Alyssa Bangs demonstrated spinning at the recent Old Farm Days event with the Outreach Committee and had a great time!
- Josephine Richstad showed her three-ply fiber of her drop spindle spinning.
- Mary Donato presented her paste paper with acrylic ink.
- Connie Griffin is a new grandma, showed Lycra striped socks from her knitting machine, a pin loom piece and spoke of the rug making retreat she recently attended.
- Raelene Viste attended a lace convention and made sprang at Carol Chang’s seminar.
- Kate Holestine demonstrated her wrist Kumihimo holder for drop spindlers as well as announced that she is planning a spin in the third Saturday of January to raise money for student scholarships.
- Lisa Baker finished her warp from the diversified plain weave workshop, made of 20/2 cotton and 8/2 white cotton warp.

Today’s program is Tips & Tricks, by participating members. Meeting adjourned at 3:51PM.

◆ Respectfully submitted by Dyan Lay, Secretary



**Officers & Guild Board**

- President - Katzy Luhning
- Vice President - Robin Conrads
- Vice President - Lisa Baker
- Secretary - Dyan Lay
- Treasurer - Kelly Sandusky
- Membership Officer - Cindy Griewe
- Past President - Mary Berent

**Chairs**

- Librarian - Sally Johnston
- Web Master - Robin Conrads, Dyan Lay
- Equipment - Vila Cox
- Newsletter Editor - Rebecca Winter
- Pat Ann Fund Administrator - Anne Oglevie
- Sample Exchange - Christie Farrin
- Outreach Committee - Janet Stanger
- Social Media - Dyan Lay
- ANWG Representative - Connie Griffin
- Spinning Study Group - Jeannie Phillips
- 2026 Weaving Intensive Study Group
  - \* Kelly Sandusky
  - \* Rebecca Winter
  - \* Chelsea Grigsby
  - \* Cindy Griewe
- Day Weaving Study Group - Greta Ankeny
- Beginning Weaving Study Group - Sherry Bittner
- Garment Study Group - Anne Oglevie
- Lace Study Group - Vila Cox
- Thursday Fiber Friends Zoom - Jinks Hunter
- Tapestry Study Group - Jaimie Landry
- Paper Study Group - Rebecca Winter
- Tour de Fleece - Jinks Hunter
- Church of Christ Contact Person - Vila Cox
- Bowmont Church Contact Person - Rebecca Winter
- Fairview Terrace Community Center Contact Person - Rebecca Winter
- Post Office Box Name Holder - Mitzi Meyers
- Mail Collector - Mitzi Meyers

**Website**

<http://www.handweavers-guild-boise.org>

**Facebook** [Click Here for Link](#)

**Mailing Address**

PO Box 6258, Boise, ID 83707

# A *Crochet* conference with..

Thurs Oct. 23<sup>rd</sup> - Sat Oct. 25<sup>th</sup> 2025

**8AM - 5PM**

- Curated vendor marketplace
- Giveaways
- Workshops
- LYS Field Trip
- Goody Bags!
- Show & Tell
- Social Gathering- bring your WIPS!
- Thursday night catered dinner

**You won't want to miss this!**

**\$150**

Registration open NOW!

\*Hotel stay not included

Scan for Tickets!



Hilton Garden Inn  
7699 W. Spectrum Street  
Boise, Idaho 83709



Yarny Social room block

Public Shopping  
Sat Oct. 25th  
12PM - 5PM

Questions? Email: [yarnysocial@gmail.com](mailto:yarnysocial@gmail.com)



## Mitzi's Black Friday Open House & Art Sale

**November 28 & 29, 2025**

**11:00 a.m. to 3:00 p.m**

**2580 North Maple Grove Road, Boise**

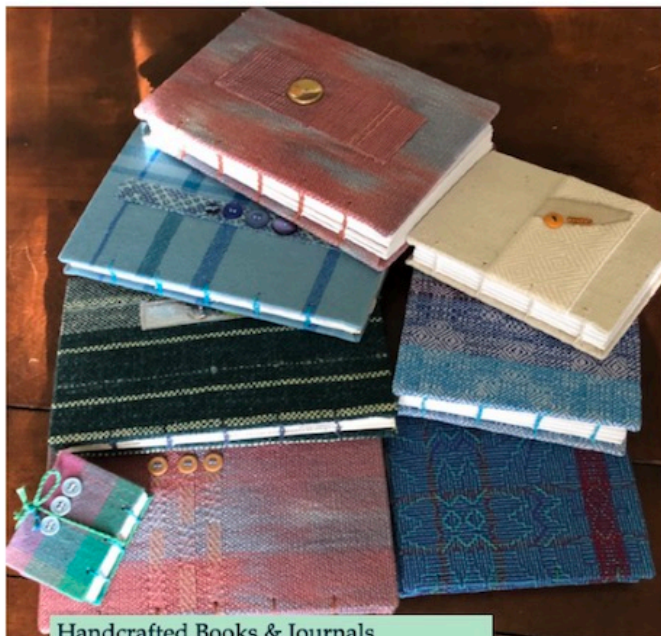
**208-340-9775**

### For Sale in Mitzi's Collection ~

- A Variety of Handcrafted Textiles
- Half-off Colorful Handpicked Yarn Kits
  - \* Never Shiver Kits
  - \* Hat Kits
  - \* Mitzi Poncho Kits
- Half-off Rug Wools
- Half-off Rayon Chenille

### For Sale in Rebecca's Collection ~

- Handcrafted Journals with Handwoven Covers
  - \* Blank Journals for Writing your Thoughts
  - \* Collaged Art Journals
- Handmade Greeting-Card-Style Paper Folders
- Small Paper Notebooks



Handcrafted Books & Journals  
Handwoven Covers

Wintzbourne Studio  
Rebecca Winter



Mitzi's Yarns  
for  
Weavers & Knitters

Mitzi Meyers  
208.340.9775  
Boise, Idaho



## Affiliate Programs



**Lunatic Fringe Yarns**  
Unique Yarns for Unique People

**Guild Affiliate Program**  
Handweavers Guild of  
Boise Valley

**Coupon Code:**  
**2025hwgbv**

Use this code on our website to save  
5% on your order &  
earn 5% for your guild!



[www.LunaticFringeYarns.com](http://www.LunaticFringeYarns.com)  
(800) 483-8749



**The WOOLERY**<sup>®</sup>  
Your Fiber Journey Starts Here!

Our Guild is now part of The Woolery's Guild Reward Program! The Woolery offers an easy way for our members to support our Guild by purchasing through our unique shopping link. Our Guild will receive 5% back from the total order value when you use the link below.

This is a great way to earn money and support the Guild by doing things you would already be doing: buying yarn, supplies, books, etc.!

Buying link: <https://woolery.com?aff=440>



Windmill Crest Farms  
11136 Smith Ave  
Nampa, Idaho 83651

Windmill Crest Farms is supporting our Guild by contributing 5% of the retail cost back to our Guild for every Schacht product purchased by our members. Contact Karla Herre directly at 210-241-1107 or [windmillcrestfarms@gmail.com](mailto:windmillcrestfarms@gmail.com).



Welcome to the Handweavers Guild of Boise Valley, Inc. The guild has been sharing its craft with our community for 50 years. Our stated purpose is to “carry on, study and foster the arts and crafts of handweaving, spinning, and fiber arts.” The Guild meets from September through June on the first Saturday of the month. Look frequently for details in the newsletter, through groups.io, or contact any member for answers to your questions. The inspiration for your fiber art is here.

