

Connecting Threads

Handweavers Guild of Boise Valley

November, 2009

Calendar of Events



November 7, 2009
COE Study Group
Moxie Java, 1122 S.
Vista, Boise
10:00 am

November 7, 2009 - Guild Meeting
Boise Historical Museum, Adelman House
11:30 am - Business Meeting
12 noon - Social time
1:00 p.m. Program - **Felted Sweater Flower Pins, by Pat Ann**

November 12, 2009 - Spinning Study Group
At the home of Penny Schrafnagel
6:30-8:30 p.m.

November 17, 2009 - Day Weaving Study Group
At the home of Lynn Ruggles
1 p.m.

January 16, 17, & 18, 2010 - Weaving Intensive
Block Substitution

March 26, 27 and 28, 2010 - Weaving Workshop
There Must be 50 Ways to Weave your Color,
with Ruby Leslie

November Program: Felted Sweater Flower Pins

The program this month will be a hands on program by Pat Ann on making handmade flower pins from felted sweaters. Please bring your own needle and a pair of scissors. Felted sweater pieces and thread will be provided. This project might translate into fulled or felted fibers, wool handwoven fabric scraps, etc.; (thinking out loud here).

Museum Comes to Life and Challenge 2009

Julie Gerrard

Thanks to everyone who participated in Museum Comes to Life and the Challenge. And, a special thanks to the Challenge committee members: Vila Cox, Mitzi Meyers, Penny Schrafnagel, and Rebecca Winter. There were enough guild members assisting with the set up on Friday and throughout the day on Saturday which helped to make it a very successful event.

We had six entries in the weaving category, eight in the spinning category, four in the fiber arts category, and six in the items made from handspun. The variety of the items entered was wonderful. Last year four hundred ballots were printed and we ran out before the end of the day and this year six hundreds ballots were printed and we only had a few left when the event was over. Lots of people voted, watched the spinners and weavers, and asked questions.

The winners of the Challenge were:

Weaving: Green Shawl - Julie Gerrard
Blue Star Wall Piece - Rebecca Winter
Orange Placemats - Irene Chandler

Spinning: Turquoise Metallic Skein - Penny Schrafnagel

Orange Skein - Penny Schrafnagel
Red Novelty Skein - Lynn Ruggles

Fiber Arts: Blouse -Mitzi Meyers
Blue Bag - Mitzi Meyers
Red Bag - Rebecca Winter

Items Made from Handspun:
Sheep Scarf - Lynn Ruggles
Purple Dragon - Paulene Robbins
Pink Purse - Mitzi Meyers

**Congratulations to everyone who participated
and to those who won!**

Board Meeting Minutes

October 3, 2009

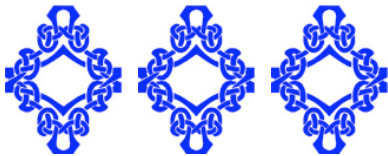
Board Meeting at Moxie Java on Vista , at 10:10 AM. Called to order by President Al Hayden. Those attending were Al Hayden, Cece Stricklin, Rebecca Winter, Irene Chandler, and Katrina Duckett.

Cece discussed possible workshops at new library at Cole and Ustick, but their hours do not fit as well with Guild requirements, so it was decided to continue to have future workshops at the Caldwell Library for this year.

Irene passed around copies of the projected budget for 2009-10 year. The board decided to make two adjustments. Irene will prepare a corrected budget and have copies ready for the next meeting.

Penny as Membership Chair was not present, so Rebecca estimated that the Guild has 34 or 35 current members.

Al discussed the Adelman, House remodel to be done by the Idaho State Historical Society starting in Spring 2010. All the Guild property must be out of the building during the remodel. The Guild will use the Prospector Room in the Museum for meetings, but space is not sufficient there for the Guild Library. Al proposed that the Library be located at his workplace for the 3-4 month duration of the remodel. Rebecca suggested that members wanting to check out extra books during the summer could plan for that. Al said the other items could be moved and stored at Al's shop in boxes and kept under a tarp to keep dust off. The counter balance loom (large rug-weaving loom at Adelman House) actually belongs to the Museum. That could also be stored at Al's if they wish, and the Guild could help with breaking it down and moving it. More discussion will take place with Ann at the Museum before final decisions are made.



Al presented a suggestion from a member regarding workshop instructors. Since there is time, effort, and money involved in feeding, providing a room, and transportation back and forth for the instructor, perhaps the host should be reimbursed. The board decided to set this reimbursement at \$80 for each workshop, plus the amount paid out by the host for the instructor's meal at any additional event attended by guild members.

Rebecca Winter will adjust the Workshop Policy to reflect this change. Also, Rebecca and Cece pointed out that the Guild policies can be read on our Website at the bottom of the page.

Al and Rebecca and Cece briefly discussed the Block Intensive Workshop for January.

President Al Hayden ended the meeting.

❖ Respectfully submitted by Irene Chandler, filling in for Cynthia Newman, Secretary

Guild Meeting Minutes

October 3, 2009

Handweaver's Guild of Boise Valley
Regular Meeting:

Called to order by President Al Hayden at 11:50 AM, October 3, 2009 at Adelman House. Those present were Al Hayden, Rebecca Winter, Janet Stanger, Vila Cox, Lynn Ruggles, Penny Schraufnagel, Cece Stricklin, Julie Gerrard, Katrina Duckett, Irene Chandler, Cyndi Schaefer, Mary Berent, Maralyn Larsen, Pat Anne, Mitzi Meyers, Marita Turner, Carol Freeman, Kathryn Zimmerman. Guests were Mary Brown and Linda Coda. Each briefly introduced themselves and mentioned their particular fiber interests.

Reports:

Vice President: Cece said she needs completed signup forms and money for the Ruby Leslie Workshop in March. These can also be mailed to Kathy McGowan. For the December meeting and potluck, the exchange is to be a bookmark, based on your favorite book. The item has to be handmade and fiber-related. It would also be fun to bring a brief synopsis of why the book is your favorite. The potluck will be at Penny's home.

Treasurer: Irene gave the income and expenses for September, and said the bank balance at end of August (last statement received) is \$3,568.03.

Membership Chairman: Penny reported 3 new members, making a total of 37. Ruth Gildersleeve is now a lifetime member, which occurs at age 75

Directory: Lynn has membership booklets available, and passed these around for all.

COE Group: Mary reported meeting will be next month at Moxie Java on Kootenai at 9:30 AM prior to the next regular meeting. Purpose is to encourage and support those interested in Certificate of Excellence. All are welcome.

Spinning Study Group: Lynn said the group meets at Maralyn Larsen's Clubhouse at 6:30 to 8:30 PM on the second Thursday of each month, but the October meeting will be at Marilyn's house rather than the clubhouse. In November it will be at Penny's house. Penny will also have the December meeting at her house, which is a Potluck and Spinning meeting.

Challenge: Al thanked the committee and Julie, as chairman, for all their work toward the Challenge this year. Julie thanked all committee members and all those who helped and those who submitted items. She reported that it was a successful event with positive comments from the public, and that a number

of members had submitted items, with several entries in each category. She then handed out the prizes. Pat suggested an additional category, that of dying fibers. Library: Pat reminded the members to check out books.

Day Study Group: Rebecca announced that the group meets the third Tuesday of each month, which is October 20. Exciting things are being studied. It is informal, with the purpose of motivating and assisting each of us.

Samples: Rebecca reminded us to pick up our samples, which are by Al Hayden this month, in 16 harness Point Twill. Also, please note that your sample month and the date you turn in the sample may be confusing because the month you turn it in will be a month ahead of when they are presented for the members.

Website: Vila is updating it and still needs info for the January Intensive.

Intensive: Al handed out flyers. It will be "teacherless". Sign-up sheets to come- see the Website for these and send your money to Al. All attendees will use the same "profile", with different weave structures. Rebecca briefly explained what blocks were, i.e. a shorthand, or code system. It was noted that the intensives were begun as a study group, so be prepared to study the selected subject prior to the workshop.

New Business: Al presented a proposal by the board about hosting out-of-town instructors. It is proposed that the host/hostess be reimbursed \$80 per workshop for housing and feeding and transporting the guest instructor. Also to be reimbursed would be the amount of the instructor's meal at any additional event where guild members were attending as a group, if the host/hostess also paid for that. Rebecca Winter moved that the host/hostess is to receive \$80 plus the cost of the additional meal if paid for. Penny Schraufnagel seconded the motion. President Al Hayden called for the vote, and the majority approved, with no members voting against.

Color Code: Color of the month was red. Red fibers and items were shown by various members. Some members were wearing red.

Mary Berent announced that Beth McKibben, a member years ago, was getting rid of her finer yarns. There are 4 boxes available for sale. Also Vila has more boxes from Dwayne Garrett, whose deceased wife was also a weaver. The Sale will be on October 17th at Vila's house from 10AM to 2 PM. A few other items are available, including 4 looms in excellent condition. See the Email previously sent out for details. Proceeds from the sale go to the owners of the items. The Guild offers help if one needs to liquidate their weaving items. Rebecca Winter stated that this and other policies are available on our Website.

Gold Bag: Won by Mitzi. It contained Shetland Roving and a watermelon. (Appropriate for October!)

Pat announced she has more "winding on" paper available for those who would like some. Also, she encouraged members to visit the White House Yarn Shoppe in Ontario, as they are advertisers in our Directory, and the shop has many interesting wares.

Show and Tell: Members displayed items they have completed recently or that were otherwise of interest this month, including some of the tea towels that were exchanged in June, and some of the items that won prizes in the Challenge in September. This is a partial list of items shown: Janet= an article on weaving with spider silk. Rebecca= additional articles and a blue purse and two other shadow-weave items. Marita= knit sock of handspun bound off with tapestry needle. Kathryn Z = two hats knit of handspun with dog hair and wool. Mitzi= a woven dark blue blouse. Julie= monochrome green scarf. Lynn, Penny, and Mitzi= handspun skeins in monochromatic colors. Mary=6.5 oz. white handspun done with newly purchased spinning wheel. (I'm sorry that I missed some items, but it's hard to keep writing, when we have so many neat things to look at.)

The meeting was adjourned by Al. Short break for lunch.

Mary Berent presented a program on "The History of Color," describing how the wealth and power of the world has been bound up with textiles, and how trade in dying agents, particularly cochineal, has caused governments to rise and fall. The color red was a primary focus of her talk. She also gave us a bibliography of color history and showed a number of books that are both informative and fun to read.

❖ Respectfully submitted by Irene Chandler, filling in for Cynthia Newman, Secretary



Intensive 2010

The area of study for the coming Intensive is "Block Substitution." Have you been looking at different weave structures which act as units? Will they fit on your loom (do you have enough harnesses)?

If you want to attend the Intensive, but are stumped about a structure, remember that there are mentors in the guild who are willing to help.

Sign up sheets and handouts will be available at the meeting. If you are unable to be at the meeting but want to sign up, the form is on page 6. Plus, it is also available on the website.

Monthly Sample Exchange

The samples available to members at the November 7th meeting are from Cece Stricklin. She wove a very nice braided twill, with the samples in plain weave.

Warp - 20/2 linen
Weft - same
Sett - 22 epi



Woven Pattern



Plain Weave

Samples vary in color, depending on from what part of the cloth they are cut.

Remember to pull your samples from the Sample Exchange Box at each regular Guild meeting. And remember to check your name off the list in each file folder. If you would like participate or have questions, contact the Sample Chair, Rebecca Winter.

Ramblings from the President

As it starts to get a bit nippy in the mornings, I think that I need to weave me a nice warm and soft scarf for my neck and ears. I am half way to work before the heater in the truck is ready to be turned on.

Does the cooler weather have any influence on your fiber arts? I am of two thoughts, do I play with nice warm and soft wool for a tactile warming? Or do I play with the vibrant colors of something like a perle cotton or Tencel for a more visual effect? Which way do you tend to follow?

I have finally settled on my "favorite book" for the Christmas bookmark exchange. Having been an avid reader since childhood, I really have many favorites and it was hard to choose. Structure, yarn and some of the color has also been decided. Now to get busy and weave.

Hope to see you all at the meeting. -- Al

Weaving Workshop: There must be 50 Ways to Weave your Color

Come join in the weaving workshop taught by Ruby Leslie

March 26,27,28th, 2010

"There Must be 50 Ways to Weave your Color" uses readily available, commercially dyed yarns which produce results that often appear hand painted or custom dyed. This workshop combines lecture, discussion, and hands-on weaving in a round-robin format. "50 Ways" is appropriate for weavers from beginners (who can dress a loom and read a draft) to advanced levels, because working with color is primarily a design issue. Weavers spend a lot of time mastering the basics of their craft and their equipment, yet often have little opportunity to immerse themselves in studio arts design coursework or conceptual thinking. This workshop attempts to bridge the gap and give weavers the tools they need to approach designing with confidence while gaining a broader understanding of how to work with color, without having to master the art of color theory.

Mark your calendars.

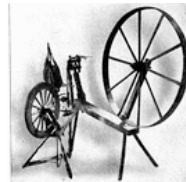
Sign up sheet is on page 7 of this Newsletter. The cost if the Workshop is \$220.00.

Study Group News

♥ Spinning Study Group

The Spinning Study Group will meet on November 12 at Penny Schraufnagel's house from 6:30-8:30 p.m. . Contact Lynn for more info, 375-9172.

We will have our December Potluck and Fiber White Elephant exchange at Maralyn's house on December 10.



♥ Day Weaving Study Group

The Day Weaving Group meets on the third Tuesday at 1 p.m. at the homes of participants.

Each participant chooses what they want to study. The group setting gives us the perfect forum and deadline system to accomplish our personal weaving goals. If this is something you are interested in as well, come join us.

The meeting on November 17, will be at the home of Lynn Ruggles.

♥ Certificate of Excellence (COE) Study Group

The COE study group will meet next on Saturday, November 7, at 10:00 a.m. We will meet at the Moxie Java on the corner of Vista and Kootenai in Boise. We will meet from 9:30 am to 11:00 am. All are welcome to participate. Call Mary Berent for more info. at 939-8906.

Guild Officers and Chairs

President: Al Hayden 343-7300
Vice-presidents: Cece Stricklin 387-2641
Kathy McGowan 939-7215
Secretary: Cynthia Newman 541-523-2451
Treasurer: Irene Chandler 467-4997
Membership Officer: Penny Schraufnagel 342-1288
Librarian: Pat Ann 452-3181
Newsletter Editor: Rebecca Winter 895-0975
Weaving Intensive Study Group: Al Hayden

Spinning Study Group: Lynn Ruggles 375-9172
COE Study Group: Mary Berent 939-8906
Day Weaving Study Group: Rebecca Winter
Web Master: Vila Cox 323-7736

Websites

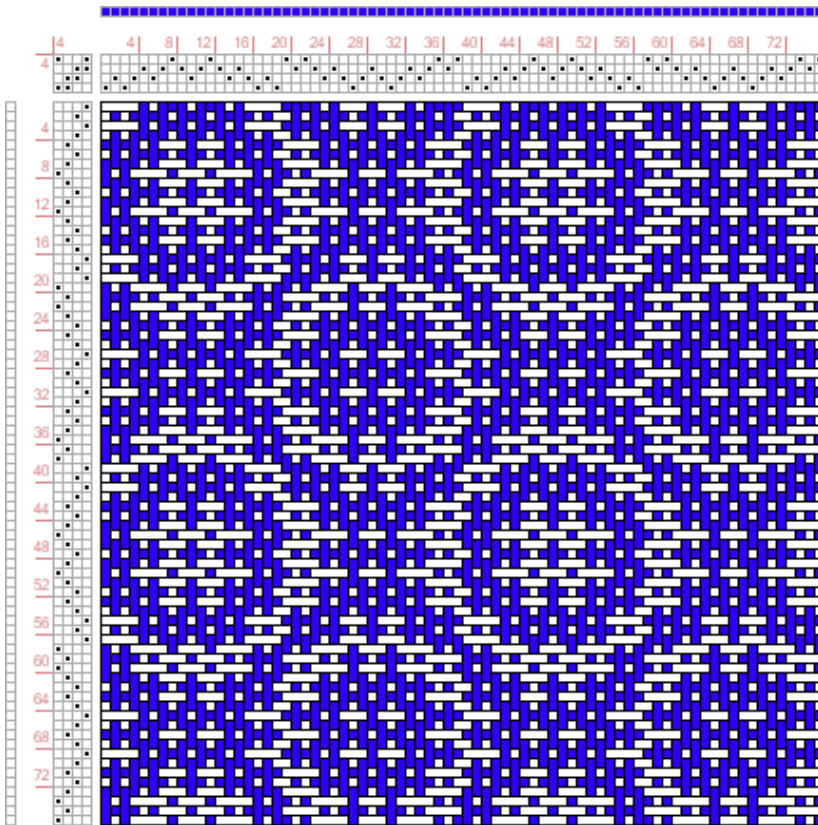
<http://www.handweavers-guild-boise.org>
<http://my.calendars.net/handweavers/>



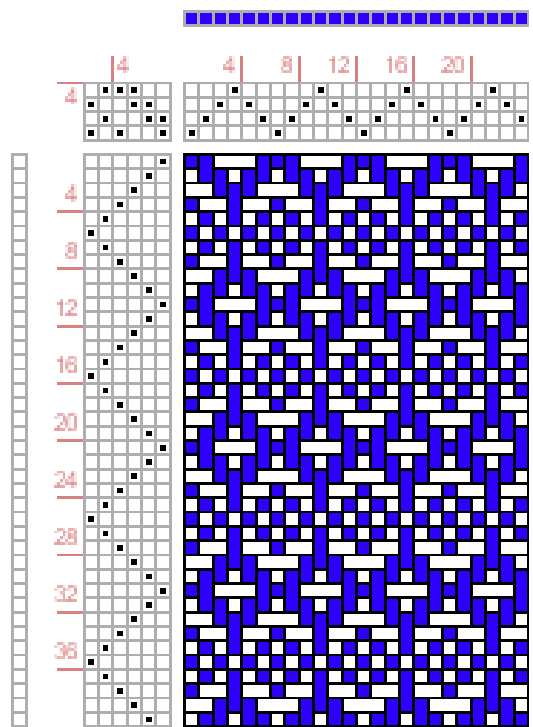
Draft Inspirations

The following drafts are from <http://www.handweaving.net> You can go there and enter the number to see all the specifics about each draft, as well as download a .wif file.

Draft #62768



Draft #62763



Spider Cloth Link

If you are interested in checking out the fabric woven of spider silk, here is one link:
<http://www.nytimes.com/2009/09/23/arts/design/23spiders.html?hpw>

2010 Weaving Intensive Study Group
Handweavers Guild of Boise Valley



Block Substitution

A Weaving Retreat, with Weaving Presented by Each Participant
Saturday, Sunday and Monday - January 16, 17 and 18
9 AM to 5 PM Location to be announced
Fee - \$30.00

What is an Intensive Study Group?

This is a “teacherless” workshop. We each have the opportunity to be the expert in our chosen area of study. There are mentors available if you need some help or direction. Please ask. For this workshop each participant will dress their loom with a weaving structure using the provided Block Draft.

Block Draft

When you sign up for the Intensive you will be provided with a handout. This will include our chosen Block Draft, an explanation of what a Block Draft is, and a list of resources available.

And Then?

Choose your weave structure and apply it to the Block Draft provided. Warp your loom with fiber of your choice. We generally have 12 to 14 participants so plan your warp length accordingly. This will be a “Round Robin” weekend.

And Then?

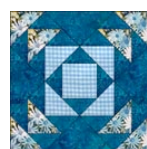
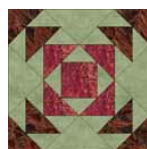
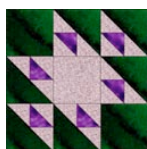
Be prepared to explain to the group the process of substituting the Block Draft with your weave structure. Threading, Tie-up and Treading, (the 3 T's)

And Then?

Please let AI know what your weave structure is.

And Then?

Come and enjoy the fellowship of like minded people. The Intensives have been a great experience, for advancing your knowledge of the craft and getting to know your fellow weavers.



There Must Be 50 Ways to Weave your Color

Workshop by Ruby Leslie

March 26, 27 and 28, 2010

9 AM – 4 PM

Location: Caldwell Public Library

Cost: \$220.00



Signup: Name: _____

Address: _____

Phone: _____

e-mail: _____

Return your form to Cece Stricklin at the next meeting, or mail to Kathy McGowan, 3496 Holl Drive, Eagle, ID 83616

Note: There is no refund after Feb 1, 2010, if you are unable to attend for any reason. It is O.K. for you to find someone else to take your place.

Please mark the loom you are bringing to the workshop:

Table Loom _____ or Floor Loom _____

harnesses on your loom _____



Connecting Threads
PO Box 6258
Boise ID 83707

The monthly newsletter from the



handweavers guild of boise valley, inc.

November Newsletter Highlights:

- ★ Program: Felted Sweater Flower Pins, by Pat Ann
- ★ Bring Supplies for the Program -- See page 1
- ★ Color Code: None for this Month
- ★ Look for learning opportunities on pages 6 & 7.

