



# Connecting Threads



Handweaver's Guild of Boise Valley  
November, 2013

## November Program: Tapestry Weaving

Kimberly Brandel will be presenting a slide show introducing forms of tapestry weaving to the guild. We hope that this will create interest in this weaving style and encourage members to try it.

**Congratulations to Lynn Ruggles for her Accomplishment of Achieving the Certificate of Excellence in Handspinning - the 14th Person in the World to be Called Master Spinner by the Handweaver's Guild of America. Her Specialized Study is called "Color Blending to Achieve Smooth Shading"**

### Calendar of Events

- November 2, 2013 - Guild Meeting - Adelman House
  - 11:30 am - Business Meeting
  - 12:30 am - Social time
  - 1:00 p.m. **Tapestry Weaving**, by Kimberly Brandel
- November 2, 2013 - Tapestry Study Group  
Right after the regular meeting of the Guild  
Adelman House
- November 12, 2013 - Bobbin Lace Study Group  
6:30 pm to 8:30 pm  
Rebecca's Studio House
- November 14, 2013 - Spinning Study Group  
6:30 pm to 8:30 pm  
Maralyn's Clubhouse
- November 19, 2013 - Day Weaving Study Group  
1.30 pm  
Rena Lute's home
- December 7, 2013 - COE Study Group  
9:30 to 11:00 am  
Penny Schraufnagel's house Prior to the Meeting
- January 18, 19 & 20, 2014 - Weaving Intensive  
The Study of Bast Fibers - Rebecca's Studio House
- March 15, 16, & 17 2014 - Weaving Workshop  
The Interlacement Motif in Weaving,  
by Susan Wilson

### And the Winners of the 20th Guild Challenge Are:

- Flat Handwoven:
  - First Place: Melanie Smith - Earth Day Lavender Wall Hanging
  - Second Place: Melanie Smith - Halloween Table Runner
  - Third Place: Melanie Smith - Easter Dish Towels
- Handspun:
  - First Place: Melanie Smith - Valentine's Day Yarn
  - Second Place: Melanie Smith - Christmas Yarn
  - Third Place: Melanie Smith - Easter Yarn
- Completed Articles from Handspun:
  - First Place: Melanie Smith - Thanksgiving Shawl
  - Second Place: Lynn Ruggles - Mardi Gras Shawl
  - Third Place: Julie Gerrard - Earth Day Table Runner
- Fiber Arts:
  - First Place: Rebecca Winter - Winter Solstice Handwoven Wrap
  - Second Place: Mitzi Meyers - Saint Patrick's Day Felted Frog
  - Third Place: Vila Cox - Chinese New Year Bobbin Lace Scarf

## Membership

It's been an inspiring year so far, with much more to come from our members/fiber artists/friends/teachers. We have 60 members to date, although some of you have forgotten to send in your dues for 2013-14. If you have questions regarding whether you have paid or not, please call me at 208-318-8182. Thanks, and have fun with all your creations.

❖ Irene Chandler, Membership Chair



## December Meeting Card Exchange

At the September meeting it was proposed that we have an Exchange of Fiber Greeting Cards. We decided that it could be any type of Fiber Card -- Thinking of you, Birthday, Christmas, etc. It should have something created with fiber in the decoration. We will have a sign up at the November meeting. The number of participants and thus the number of cards needed will be capped at the November meeting. Share your love of fiber with those you care about with an original card this year. Remember paper can also be a fiber to!

Editor's note: Here is a link shared with us by Melanie Smith. You will find inspiration for your cards: <http://www.weavingindiana.org/PDFs/EleanorBest/GreetingCardCollection.pdf>

## UFO Program

The UFO (Un-Finished Object) program is in full force again this year!! Same "rules" as last year. Bring the unfinished object to a regular meeting and give a short explanation. Then fill out a short form registering your intentions. Then bring the finished thing-of-beauty to a regular meeting and collect your prize for finishing it. (Chocolate always Available.) An easy and fun way to clean out those old projects.

❖ Ivy DeHart & Pat Ann



## March Workshop:

### The Interlacement Motif in Weaving by Susan Wilson

This is a 3-day workshop. Think of familiar design motifs such as stripes, trees, snowflakes, and geometric shapes created by woven structures. Then imagine the plain weave interlacement as the design motif itself. In this round-robin workshop, students will sample a variety of weave structures that can create an image of interlaced ribbons on the surface of the fabric. Learn about designing with blocks, profile drafting, several lace weaves and tied weaves, and creating color-and-weave effects. The workshop is round robin style with advance threading information for looms to be prepared before the workshop.

Cost is \$125.00 per participant. Plus, there is a \$3.00 materials fee, which covers a 36 page handout in a pocket folder.

The workshop will be limited to 20 participants. Contact Pat Ann or Ivy DeHart for preregistration. Location to be announced.

❖ Ivy DeHart & Pat Ann



## Notes From Your President

I can't believe that it is November already. Where did the time go? I realized this morning that I'd better start thinking about my cards for the exchange for the holiday gathering in December. It will obviously be here before I know it. With the exchange in mind, I also made a list of all the projects I would like to complete soon (soon being within the next 6 to 8 months). I came up with nine projects. There are many more in the back of my mind, but the nine I listed are the projects that I have committed to do, such as the guild exchanges, the UFO's items, and gifts for friends. I am hoping the list will help to keep me on track.

As I explained at the guild meeting in October, the Idaho Historical Museum will begin a major renovation next year, which will take three years to complete. The board is busy trying to find a location for our meetings. Rebecca Winter has graciously agreed to house our library in her studio in Meridian. The board has agreed to pay to insure the contents of the library. Along those lines, the Historical Museum would like to continue Museum Comes to Life on the last Saturday in September during the renovation. With that in mind, we will have a Challenge for next year.

❖ Julie Gerrard, President

## Study Group News

### ♥ Spinning Study Group

November's study group will be back to the normal date and time, which is **November 14**, from 6:30 to 8:30 at the club house at Maralyn's. This month's theme will be fall colors. If you have any questions or need directions please let me know. Melanie [yarnsnthreads@aol.com](mailto:yarnsnthreads@aol.com)



### ♥ Certificate of Excellence (COE) Study Group

Our next meeting will be held on **December 7**, at the home of Penny Schraufnagel prior to the Christmas Party, at 10 am. As usual, everyone is invited. For information call Mary Berent, 939-8906.

### ♥ Day Weaving Study Group

The Day Weavers will meet at the home of Rena Lute on Tuesday, **November 19**, at 1.30pm. If you have any questions please call Anne Oglevie 208 994 2725. All are welcome.



### ♥ Tapestry Study Group

The Tapestry Group will meet next on **November 2**, after the regular Guild meeting.

### ♥ Bobbin Lace Study Group

The Lace Group meets the **2nd Tuesday** of each month from 6:30 to 8:30pm at Rebecca's Studio House in Meridian. If you are interested in another way to work with thread, this might be just the thing for you. There is a set of lessons to get you started on your way to making lace. Contact Vila for more information on the supplies needed to begin, 323-7736.



## New Contact Information

Please Update Your Directory

Caroline A. Dade  
4115 East Clocktower Lane Apt. 147  
Meridian, ID 83642  
319-5186 (home)  
671-3327 (cell)



## Equipment For Sale

For more information or pictures of the following equipment, contact MaryBerent 939-8906, [dmberent@earthlink.net](mailto:dmberent@earthlink.net)

**50" Norwood, 4-harness 6-treadle loom.** A rising shed loom with beautiful cherry wood construction in great condition. Includes 4 reeds: 5, 8, 12, and 15 dent. The loom also has a one yard sectional beam and flat steel heddles. This loom is a beautiful piece of furniture as well as a well-designed piece of weaving equipment. \$750.

**36" Leclerc Nilus, 4-harness 6-treadle loom.** Solid maple, rising shed loom in great condition. Reeds included 5, 8 and 12 dent. Also included is a raddle, leash sticks, extra steel rods and a few warping sticks. This would make a wonderful beginner loom or a great second loom for someone who wants additional weaving options. \$500.

**Majacraft "Rose" Spinning Wheel.** Includes 2 whorls (ratio from 4.25 to 19.5), two flyers and 4 large bobbins. Also a lazy kate box with a rose pattern to match the wheel. The wheel and all accessories are in like new condition. This is a really wonderful wheel with great versatility. New, this wheel sells for \$1190, this one is available for \$800.

**Crisp Spinning Wheel.** This wheel was built in the 1970's by a true craftsman, it is made of satiny smooth maple and is truly a work of art. This is not a factory produced wheel, but hand made by someone who loved beautiful and efficient equipment. It is double drive, comes with a beautiful matching lazy kate, 3 wood bobbins and a sweet, handmade copper threading hook. \$850.



## Guild Meeting Minutes

Regular Meeting, October 5, 2013  
Adlemann House

Present: Janet Stanger, Kathy Shifflet, Rebecca Winter, Kimberly Brandel, Penny Schraufnagel, Rena Lute, Anne Oglevie, Mary Berent, Katzy Luhring, Ivy DeHart, Jean Zaske, Pat Ann, Al Hayden, Cece Stricklin, Vila Cox, Carol Freeman, Kathy McGowen, Julie Gerrard, Cynthia Newman, Melanie Smith, Virginia Cook, Irene Chandler, Judy Tallent, Mary Siedenstrang, Marita Turner, Elizabeth Perez.

President Julie Gerrard reported that starting in February the Historical Museum will be closed for 3 years for remodeling. She has made arrangements for the February meeting to be in the Library across the street from the Museum. Rebecca Winter has volunteered her studio home for our Library. The board will be working on a solution for a meeting place. If you have any suggestions please email Julie. Julie also shared with us a certificate of participation from the Museum for our participation in Museum Comes to Life. It was their 40<sup>th</sup> year anniversary. The Museum is planning on keeping the Museum Comes to Life event going, maybe held at the old Penitentiary.

Vice President Ivy DeHart has a signup sheet for the card exchange at the annual Christmas Party. It can be on any occasion card, but it has to be fiber related. She passed around several examples. You need to make one for each person that signs up. The number will be decided by the next meeting. She also reported that she will be taking money, starting in January, for the Susan Wilson Workshop. The workshop is March 15, 16, & 17. The workshop is on Interlacement. We need at least 12 people to sign up to hold the workshop and a maximum of 20 will be accepted. There will be a towel exchange at our June Picnic. You make 1 towel for each towel you want to exchange.



Treasurer, Melanie Smith, reports that we have \$5,000.67 in checking.

Membership Chairman Irene Chandler reports that we have 1 new member, Rhonda Shay. The Guild Directories are available. We have 60 members, and there are still a few who have not paid. Irene wanted to draw your attention to the advertisers as their ads pay for half the cost of the directories. Lunatic Fringe and Puffy Mondaes give Guild members a 10% discount.

Librarian, Judy Talent, reports that we have the new cupboard so it is now easier to find things. The lock is not working and Al Hayden has volunteered to fix it.



Rebecca Winter, the Newsletter Editor asked if everyone got her reminder to get their items to here. She thanked everyone for getting them to her.

ANWG Rep, Rebecca Winter, reports that there is nothing new. ANWG First Vice President, Anne Oglevie, reports that she has contacted someone in the Twin Falls Guild. That person is interested in helping us put on the conference, but she still needs to ask her Guild if they will help us, as well. However, another Guild has offered to do the 2017 Conference. We will be looking at a later Conference.

Web Master Vila Cox asked members to please send her a reminder if you don't see the updates that are supposed to be on the web page.

For the Sample Exchange, Al Hayden reports that the sample for today was furnished by Emma Smith. He will contact the person responsible for next month's sample and remind them.

For Museum Comes to Life, Janet Stanger thanked everyone who helped her and all the participants. She announced the winners in each category. Some of the items were only 1 or 2 votes from each other. 8 people provided 42 entries.

Hand Woven:

1<sup>st</sup> Place, Melanie Smith for her Earth Day Lavender Wall Hanging, 2nd Place was Melanie

Smith for her Halloween Table Runner and 3<sup>rd</sup> place went to Melanie Smith for her Dish Towels.

Hand Spun:

First Place Melanie Smith for her Valentine's Day Yarn, 2<sup>nd</sup> Place was Melanie Smith with her Christmas Yarn and 3<sup>rd</sup> Place went to Melanie Smith for her Easter Yarn.

Completed Articles from Hand Spun: 1<sup>st</sup> Place went to Melanie Smith for her Thanksgiving Shawl, 2nd Place went to Lynn Ruggles for her Mardi Gras Shawl and 3<sup>rd</sup> Place went to Julie Gerrard for her Earth Day Table Runner.

Fiber Arts: 1<sup>st</sup> place went to Rebecca Winter for Winter Solstice Wrap, 2nd went to Mitzi Meyers for a Saint Patrick's Day felted Frog and 3<sup>rd</sup> went to Vila Cox for her Chinese New Year Bobbin Lace Scarf.

(Editor's Note: Melanie Smith entered 16 items.)

Al Hayden Volunteered to be next year's Challenge Chairman. Melanie Smith, Julie Gerrard, Vila Cox and Janet Stanger volunteered to be on his Committee.

Show and Tell:

Melanie Smith shared her Table Runner and her other winning challenge entries. Irene Chandler showed some handbags that she had crocheted out of some fiber that was donated by Lynn Ruggles. Her favorite was made of Horse hair. Rebecca shared her Wrap and 2 Journals that she entered in the Challenge. Kathy Shifflet showed her Sparrow Tail Lace Shawl that she had knitted and entered in the Challenge. Penny Schraufnagel shared Hand Spun Yarns. Marita Turner shared a Shawl. Mary Berent shared a Jacket that she had made from a Little Somethin Pattern. Ivy DeHart some woven Mug Rugs. Jean Zaske shared some Towels she had woven. Pat Ann shared some hand Spun Yarn. Vila Cox showed her Bobbin Lace Scarf that she had entered in the Challenge. Kathy McGowen shared some curtains she had woven in Sea Glass. She also showed some woven Scarves. Carol Freeman showed the Jacket that she entered in the Challenge; it is the Jacket that made it to the semi finals of a contest she had entered. Julie Gerrard showed a small hand woven piece that she had purchased from an antique shop.

Study Groups: please check the newsletter and the Web Site for current information on the Study Groups.

UFO's: No finished UFO's were presented today. Unfinished- Carol Freeman showed some fabric she is going to make a Jacket out of. Julie Gerrard showed some Dyed Warp that she is going to make 2 scarves. Jean Zaske is still working on a Christmas Tablecloth that she had presented before.

Gold Bag was won by Anne Oglevie. It contained a couple of skeins of yarn and a Christmas Candle.

Meeting Adjourned for monthly Program on baste fibers.

♦ Respectfully Submitted, Janet Stanger, Secretary  
These minutes have been reviewed by the Board via email and have been approved as printed.

## Officers and Chairs

President: Julie Gerrard 342-8562

Vice-presidents:

Ivy DeHart 939-2335

Pat Ann 208-337-2126

Secretary: Janet Stanger 377-0746

Treasurer: Melanie Smith 385-0085 or cell 608-0101

Membership Officer: Irene Chandler 318-8182

Librarian: Judy Tallent 208-615-1857

Web Master: Vila Cox 323-7736

Newsletter Editor: Rebecca Winter 859-2822

Sample Exchange: Al Hayden 343-7300

Spinning Study Group: Melanie Smith 375-9172

Weaving Intensive Study Group:

Lynn Ruggles 375-9172

COE Study Group: Mary Berent 939-8906

Day Weaving Study Group: Anne Oglevie  
208-994-2725

Bobbin Lace Study Group: Vila Cox 323-7736



## Website

<http://www.handweavers-guild-boise.org>

## 2012-2013 Programs, Workshops & Events

- November 2: Tapestry - Kimberly Brandel
- December 7: Annual Christmas Pot Luck and Card Exchange at Penny Schraufnagel's house
- January 4: Al Hayden & Members - Warping - Front to Back and Back to Front Demo's, plus Tips and Tricks by Members  
Door prizes for those attending
- January 18, 19, 20, 2014: Weaving Intensive - Study of Bast Fibers
- February 1: Carol Freeman - Free Style Jackets: Sewing with Hand-woven Fabric
- March 1: Vila Cox - Texture and How To Get It
- April 5: Katzy Luhring - Which Colors and Why
- Sat-Mon, March 15, 16, 17: Workshop: Susan Wilson, *Interlacement Motif in Weaving*
- May 3: Annual Yarn and Equipment Sale or Weavers Yard Sale
- June 7: Annual Picnic and Towel Exchange at Anne Oglevie's

## Photos of the First Place Winning Challenge Entries



Top Row -- Melanie Smith's Earth Day Lavender Wall Hanging, with detail

Bottom Row Left -- Melanie Smith's Thanksgiving Shawl

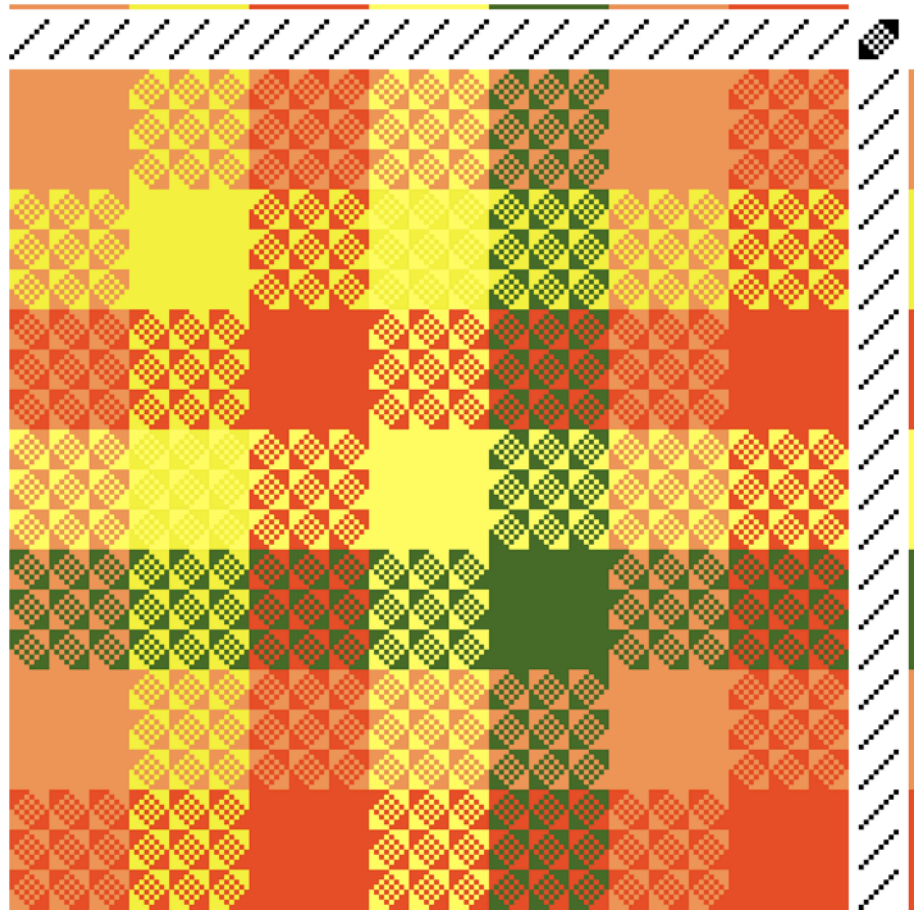
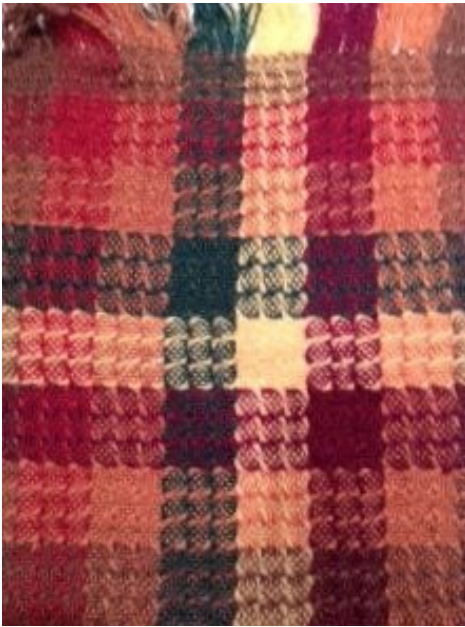
Bottom Row Center -- Melanie Smith's Valentine's Day Yarn

Bottom Row Right -- Rebecca Winter's Winter Solstice Handwoven Wrap



## Sample Exchange

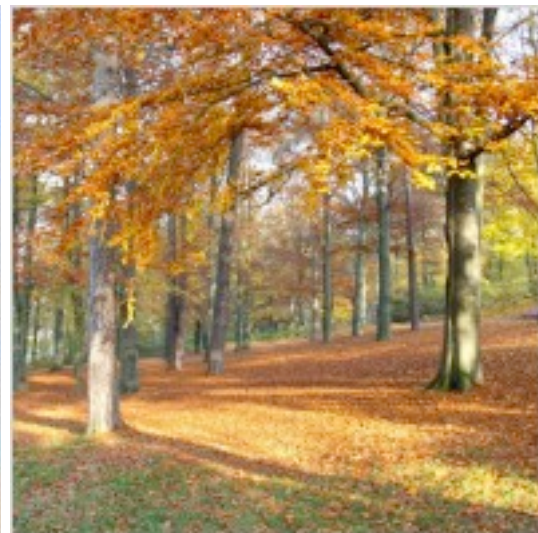
This month's sample is from Anne Oglevie. It's a star!



### Sample Exchange Box

Members may pull samples from the Sample Exchange Box at each regular guild meeting. And remember to check your name off the list in each file folder. If you would like to participate or have questions, contact the Sample Chairperson.

Also, remember, there are samples from last year that are available to anyone toward the back of the box.



# Tail of Two Yarns

This is a tail of two different yarns that joined together to make a beautiful finished piece.  
The two (or more) yarns that gathered together were of different pedigrees.

Some were LARGE

some were small.

Some were from one kind of plant  
some from another kind.

And then there were those from various critters.

In each finished piece there was a something from two different pedigrees.

Two different sizes of one or more fibers

Or

Two different fibers

(two plants)

or

(two critters)

Or

(one plant and one critter)

The same tail goes for those crafty spinners.

Two different sizes of one or more fibers

Or

Two different fibers

(two plants)

or

(two critters)

Or

(one plant and one critter)

Plied, Cabled, Blended or whatever else may apply.

The Fine Print

The two different yarns need to be easily seen

Made by you this year (Nov 2013 – Sept 2014)

Short pieces of each yarn to be supplied with finished item

Same for spinners (yarn/fiber)

## Challenge 2014

# Basking in Bast Fibers

January 18-20, 2014

## *Of linen cloth*

"The next thing to this, which our English housewife must be skilful, is in the making of all sorts of linen cloth, whether it be of hemp or flax, for from these two only is the most principal cloth derived, and made both in this, and in other nations" - Gervase Markham, *The English Housewife* (1615)



HANDWEAVERS GUILD OF BOISE VALLEY PRESENTS:

## *Basking in Bast Fibers Intensive 2014*

**Saturday, Sunday and Monday, January 18, 19 and 20, 2014, 9-5pm**

**Location: Rebecca's Studio, 1012 E. 3<sup>rd</sup> Street, Meridian, ID**

**Price: \$25.00**

The Intensive Study is a Round Robin of a particular weave structure or weaving concept. This year, the focus is on the fiber rather than the weave structure. You will be using **bast** fibers for both warp and weft.

What is a bast fiber? **Bast fiber** is plant fiber collected from the inner bark surrounding the stem of certain plants. Examples are: Flax (Linen), Hemp, Jute, Kenaf, Kudzu, Nettle, Okra, Paper, Mulberry, Ramie, Rattan, Roselle Hemp, and Wisteria. Cotton is not a bast fiber as it comes from the seed of the plant, not the stem.

We would like to have a variety of weave structures, so we will be limiting each type of draft to no more than two weavers. For example, if you want to weave huck lace, and two other people have already chosen that structure, we will ask you to choose something else. Get motivated early, folks, and sign up with the weave structure of your choice!

Guidelines in choosing your fibers:

1. Blends are allowed, but the bast fiber content must exceed the non-bast fiber content. Thus, if you use a 50/50 cotton/linen blend in the warp, you can't use the same fiber in the weft because then the two fibers will have equal amounts. We're assuming that the finished sample will use equal amounts of warp and weft fibers.
2. Warp and weft must both have bast fiber content. A cotton warp and linen weft does not meet this criteria. An 80/20 cotton/linen blend for warp and a 100% linen weft will work.
3. A finished sample size of 6-8" square is recommended. Not too small, not too large.

Each person will choose a draft before the workshop, warp their loom using the draft, and weave the first sample. When we meet as a group, each person will have a chance to weave a sample on each of the looms brought by participants. You will take home a notebook containing drafts for each sample, your woven samples, and information that may be helpful in understanding each sample.

### **Before the Workshop:**

- ❖ Sign up for the workshop and specify which draft you will be using (name of pattern or pattern reference).
- ❖ Choose a draft and appropriate yarns. Yarn choice must be a bast fiber or a blend containing bast fibers. The final sample must be more than 50% bast fibers.
- ❖ Warp your loom and weave the sample you have chosen.
- ❖ Make notes on what procedure you followed in the weaving to provide information to others during the workshop.

### **By December 1, 2013:**

Provide a draft and other notes on your chosen sample to the workshop coordinator (PDF or Word format preferred, paper copies accepted as well). The workshop coordinator will prepare a notebook for each person ahead of time containing all the drafts so that everyone has this available during the workshop.

# *Basking in Bast Fibers*

## ❖ JANUARY 18, 19, 20 2014

- ❖ Each participant will bring a warped loom to the workshop, warped with bast fibers, in colors and threads chosen by the weaver. Participants will provide shuttles and yarn to be used at their loom. Send your draft in printable form by December 1, 2013 to Lynn. Note that Lynn does not have the ability to print out WIF files.
- ❖ The Intensive is limited to 20 participants who must be members of the guild. Anyone who is not a member who would like to take the workshop is invited to join the guild.
- ❖ Cancellations made by January 3 will receive a full refund. Refunds after that date will be considered on an individual basis.

### **Workshop:**

- ❖ Bring your loom, warped and ready to weave, as well as shuttles and weft yarn for others to weave your sample. You may bring additional yarns in other colors or weights for people to weave alternate samples.
- ❖ Bring tags to mark your samples woven on other looms.
- ❖ Bring thick yarn or paper strips to place between samples woven on each loom.
- ❖ Bring any other weaving supplies you may want to have such as: scissors, notepaper, pen, needles for hem stitching, etc.

- ❖ Return the following form with your fee to:  
(checks made out to HGBV)

Lynn Ruggles  
4711 N Dalton Lane  
Boise, ID 83704

## *Basking in Bast Fibers*

Name.....

Address.....

Phone.....

E-mail.....

Loom you are planning to use:

Brand..... Number of Harnesses.....

Draft.....

.....

Connecting Threads  
PO Box 6258  
Boise ID 83707

The monthly newsletter from the

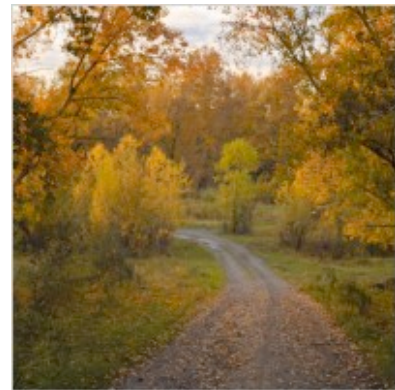
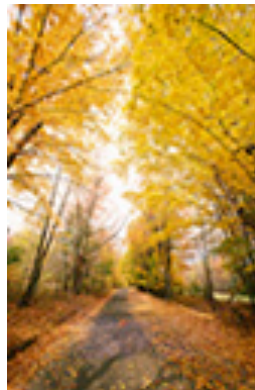


handweavers guild of boise valley, inc.

## Newsletter Highlights and Please Remembers:

Look for Workshop and Study Group Opportunities

Start Planning for Exchanges



**May your road always lead you to fine fibers.**