



Connecting Threads

Handweavers Guild of Boise Valley

November - 2014

November Program: Twill

The November Program will be on Twill, presented by Mary Berent. This program will be just in time to gear us up for the Twill Intensive in January. Mary, as members know, will give us a very informative program. If you want to get a jump start on Twill, you don't want to miss this program. ♦ Pat Ann, Vice President

Calendar of Events

- November 1, 2014 - Guild Meeting
11:30 am - Business Meeting
12:30 am - Program - **Twill, by Mary Berent**
Rebecca's Studio House, 1012 E. Third St., Meridian
- November 11, 2014 - Bobbin Lace Study Group
6:30 pm - 8:30 pm
Rebecca's Studio House
- November 13, 2014 - Spinning Study Group
6:30 pm - 8:30 pm
Maralyn Larson's Clubhouse
- November 18, 2014 - Day Weaving Study Group
1:30 pm
Anne Oglevie's Townhouse
2427 Birchgrove Lane, Boise 83703
- December 6, 2014 - COE Study Group
10:00 to 11:00 am
Prior to the December Luncheon
Penny's Home
- January 17, 18, & 19, 2015 - Weaving Intensive
Twill and Twill Derivatives
- March 28-30, 2014 - Designing Full Circle
A Weaving Workshop by Mary Berent



Congratulations to Cynthia Newman

She Has Passed her Level I

Certificate of Excellence in Handweaving

Given by the

Handweaver's Guild of America



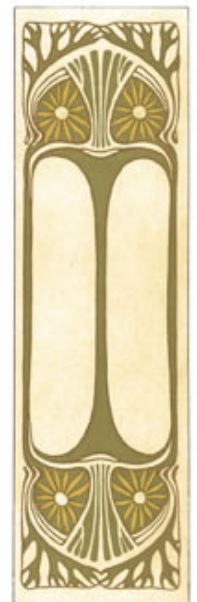
COE Examination - A Wild Success

We want to give a great big shout of appreciation to all the volunteers who helped make the COE Weaving Examination a Huge success!

The Mock COE Open House was a lot of fun and helped get us in the mood for the days to come. On Thursday four wonderful ladies arrived in town and things went up hill from there. A group went to dinner that night and the company was wonderful as always.

On Friday the "work" began. Once the final equipment was in place, the examiners did most of the work with the assistance of the scribes. They had a warm bed to rest in at night and were chauffeured to and fro daily. The HGA staff tallied the numbers and kept everything straight. And the whole group was kept going by the great food that appeared at the right time every day.

Even though there were some late nights, the work load was very manageable since so many pitched in to help. The committee extends a heartfelt THANK YOU to all.



~!~!~stay tuned for upcoming party plans~!~!~

♦ Vila Cox, COE Examination Co-Chair

COE Examination - What Fun

- ☞ Calories did not count during the four days of the Examination.
 - ☞ The visitors from afar, fellow weavers, blended right in with our group.
 - ☞ The Fooood!!!Then we had more food.
 - ☞ Kathy Shiflet exited her scribing duties having learned a tremendous amount with "eyes wide open."
 - ☞ Others vacillated between, "I can do this!" and "Oh my gosh, it's way too much for me."
 - ☞ Some said, "Nope. Not for me."
 - ☞ Yes, they really do measure your samples.
 - ☞ We needed Midnight Margaritas.
 - ☞ Mary Ann from HGA says we are a Dream Guild, as hosts.
 - ☞ Sandra from HGA says it is a pleasure to work with so many talented people.
 - ☞ They also said we are the "Hotbed of the COE."
 - ☞ We feel we have become a more cohesive group for working on this amazing project together.
- ☞ The COE Examination Committee



UFO Program (Un-Finished Object)

☞ Dig out those un-finished projects that are taking up needed space.

☞ Same Rules

- ◆ Bring the unfinished object to a regular meeting and give a short explanation.
 - ◆ Fill out a short form registering your intensions.
 - ◆ Then bring the finished thing-of-beauty to a regular meeting.
 - ◆ And collect your rewards.
- ☞ Kathy Shiflet, Vice President

Membership

It was a pleasure to meet Kathy Oden, who is our newest member of the Handweaver's Guild of Boise Valley. Earlier in the week I also received an email from Michelle Robin, of Mountain Home, who is also joining. Welcome to both Kathy and Michelle!

We have a few members from last year who have not renewed their memberships, so I will be contacting you by email soon. We are now meeting regularly in Meridian, which may be an easier drive for some of you. Hope to see you all soon!

•☞ Irene, Membership Officer

From Your President: Woven Together

The Indian summer continues as I am writing this, although through my window I can see the wonderful red leaves of the maple tree in my front yard. I am looking forward to the cold weather when there is no yard work and I have more time to weave and do other fiber arts.

Our next meeting will be November 1st and we have a program on Twills by Mary Berent, which is our intensive next year in January. I am looking forward to hearing about the COE judging at our next meeting, as well.

A big thank you goes to Greta Ankeny. She has volunteered to take over the Sample Exchange from Al Hayden.

If you have any questions or suggestions please contact me at anneroglevie@gmail.com or on the phone at 208 994 2725.

•☞ Your President, Anne Oglevie

November Sample

Our sample this month comes from Anne Oglevie. It is a wonderful 8/2 cotton Huck. It's suggested use is Dish Towels. Imagine this weave in any number of color-ways.

•☞ Greta Ankeny,
Sample Exchange Chair



Sample Exchange Box

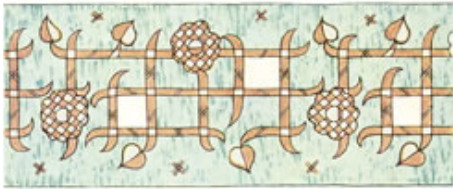
Members may pull samples from the Sample Exchange Box at each regular guild meeting. And remember to check your name off the list in each file folder. If you would like to participate or have questions, contact the Sample Chairperson.

Also, remember, there are samples from last year that are available to anyone toward the back of the box.

The October Program Was Enjoyed by All

Thanks so much, Katzy, for giving us such an informative program in October on Southwest Tapestry Weaving. You had short notice to put this program together and were a good sport. I am so impressed on how much more I know about the Southwest Region, the creative weaving each group produces, and how to know what I might be buying!

•☞ Pat Ann, Vice President



Study Group News

♥ Certificate of Excellence (COE) Study Group

COE Study Group will meet before the December Luncheon, 10:00 am, **December 6th**. All are welcome; for more information call Mary, 939-8906.

♥ Bobbin Lace Study Group

The Lace Study group will meet **November 11th**, 6:30pm at the Studio House. If you have questions or need something from Vila, please be sure to let her know ahead of time so she is prepared. Please RSVP, and if there is not enough interest we will plan for the next month.



♥ Spinning Study Group

November 13th at Maralyn's club house. The fun starts at 6:30. This month our tip of the month will be how to use a McMorran Yarn Balance, which is a great way to figure out how many yards you have in any skein of yarn. This is a great thing to learn even if you aren't a spinner.



All are welcome to come. So bring your wheel, spindle or whatever you would like to work on or just come to visit. If you have any questions or need directions please email Melanie at yarnsnthreads@aol.com

♥ Day Weaving Study Group

The Day Weavers Group will meet at Anne Oglevie's townhouse at 2427 Birchgrove Lane Boise 83703 on Tuesday, **November 18th** at 1:30 pm. Please call Anne 994 2725 if you need more information.

Officers and Chairs

President: Anne Oglevie 208-994-2725
Vice-presidents: Pat Ann 208-337-2126
Kathy Shiflet 208 830-9698
Secretary: Janet Stanger 377-0746
Treasurer: Melanie Smith 385-0085 or cell 608-0101
Membership Officer: Irene Chandler 318-8182
Librarian: Judy Tallent 208-615-1857
Web Master: Vila Cox 323-7736
Newsletter Editor: Rebecca Winter 859-2822
Sample Exchange: Greta Ankeny 318-6028
Spinning Study Group: Melanie Smith 385-0085
Weaving Intensive Study Group: Mary Berent 939-8906
COE Study Group: Mary Berent 939-8906
Day Weaving Study Group: Anne Oglevie 208-994-2725
Bobbin Lace Study Group: Vila Cox 323-7736

Website

<http://www.handweavers-guild-boise.org>

FIBER ARTS MIXED MEDIA EXCHANGE

DECEMBER 2014 MEETING

HANDWEAVER'S GUILD OF BOISE VALLEY

All Media – works of art created in any material using any fiber technique

Your special gift will be created by you from your choice of material. A short list that can be expanded to reflect your talents could include: weaving, spinning, felting, bobbin lace, beading, knitting, crochet, quilting, paper making, tapestry.

Be creative – Your special gift will brighten another's holiday!



- * **Wrap your gift, and put it in a brown paper bag.**
- * **All bags will be collected at the door.**
- * **Then only the wrapped gifts will be displayed for the exchange.**
- * **Numbers will be drawn to correspond with the numbers on the gifts**

TWILL and TWILL DERIVATIVES

HANDWEAVERS
GUILD OF BOISE
VALLEY

WEAVING
INTENSIVE

January 17, 18, & 19,
2015

9:00 am to 4:00 pm

Location to be
announced

Fee: \$30.00

Come join the fun and
leave with exciting new
ideas to spice up your
twill weaving!

SOME NECESSARY "INTENSIVE" INFORMATION:

- ▣ For the Intensive, each participant will select a twill/twill derivative of their choice. Previous to the Intensive, you will warp your loom using the chosen draft and fiber appropriate to the weave structure. Please weave the first sample for the Guild Notebook before coming to the Intensive..
- ▣ This will be a round robin format in which each person may move from loom to loom weaving samples as they wish, offering the opportunity to weave some of those twill drafts you have been wanting and wishing to try. Fun fiber combinations of color and texture will be provided for all to weave their samples.
- ▣ A finished sample size of 6-8" square is recommended.
- ▣ All participants will meet as a group at the beginning of the Intensive and have the opportunity to explain their project and provide information that may be helpful in understanding their loom and sample.
- ▣ During the Intensive, there will be opportunities to discuss the topic and share information, special hints and helps, additional information about the weave structures chosen and other valuable insights as appropriate.
- ▣ The Intensive is open to members of the guild. If a nonmember wishes to be included, we ask that they join the guild.

BY DECEMBER 1, 2014

- ▣ Provide a draft and other notes on your chosen sample to the Intensive coordinator (PDF or Word format preferred, paper copies accepted as well). A notebook containing all the drafts will be prepared for each person so that everyone has this available during the workshop.



Reserve your place in the Intensive by making your payment by
November 15, 2014.

(We need to know how many to plan for, so early reservations are helpful.)
Cancellations made by January 1st will receive a full refund.

Return this form with your Intensive \$30.00 fee to:
Kathy Shiflet, Vice Pres., 2564 N. Waggle Place, Meridian, ID 83646
(Checks made out to HGBV)

Name _____

Address _____

Phone _____

E-mail _____

Loom to be used – Brand, Floor or Table Loom, Number of Harnesses, Weave
Structure you plan to use.

Connecting Threads
PO Box 6258
Boise ID 83707

The monthly newsletter from the



handweavers guild of boise valley, inc.

