

Connecting Threads

handweavers guild of boise valley

November, 2017

November Program: Rug Punch Coasters

Please plan to join us for our November program. Jinks Hunter will be showing us how to make a Rug Punch Coaster. This is just in time for our Christmas Mug Rug Exchange at the Christmas party next month. Jinks asks that you please let her know you are interesting in learning to rug punch so that she will have plenty of punches and materials for you to make a coaster. If you haven't signed up please email her at jehunter101@gmail.com ♦ Melanie Smith, Vice-President



Calendar of Events

- November 4, 2017 - Regular Guild Meeting
11:30 a.m. - Business Meeting
12:30 p.m. - Program: **Rug Punch Coaster**, by Jinks Hunter
At the First Congregational Church of Christ,
2201 Woodlawn, Boise, in the Banquet Room
- November 4, 2017 - Board Meeting
10:00 a.m.
At the Church, prior to the Regular Meeting
All are welcome to attend
- Study Groups:**
- October 26, 2017 - Rug Punch and Punch Needle Meeting
1:00 p.m. - 4:00 p.m.
Kathy Jo West's
♦ Next Meeting is November 30 - Pat Day Hartwell's
- November 1 & 15, 2017 - Knit and Crochet Group
1:00 p.m. - 3:00 p.m.
Aero Cafe
- November 11, 2017 - Spinning Study Group
10:00 a.m. - 12:00 noon
Penny Schraufnagel's Home
- November 14, 2017 - Bobbin Lace Group
10:00 a.m. - 12:00 noon
Vila Cox's Home
- November 21, 2017 - Day Weaving Study Group
12:30 p.m.
Julie Gerrard's Home
Meets on the 3rd Tuesday
Topic: Studying the book by Hargrove
- December 2, 2017 - COE Study Group
10:00 a.m. - Before the Regular Meeting,
at the home of Penny Schraufnagel
Meets every other month, prior to the regular meeting
- January 13-15, 2018 - Weaving Intensive
Topic: Circles
At Stevens-Henager College, Nampa
See the flier later in this Newsletter

Mug Rug Exchange

This year's exchange for the December meeting will be coasters or "mug rugs." Each person participating in the exchange will go home with a 'set' of coasters - one from every other participant! Sign up's have been fantastic! We have 15. Coasters should have no dimension less than 3.5 inches, using the technique of your choice. So you can weave, felt, knit, rug punch, or any other fiber art you can think of.

♦ Melanie Smith, Vice-President

From Your President

What has the Guild provided me?

As I thought about this, my list became quite long. My desire to learn to weave is what brought me into the Guild. The knowledge I have received and have begun to implement has been far beyond my expectations. When I first joined, I didn't know what I didn't know!

Weaving information that has been shared with me in areas of loom workings, draft reading, weaving pattern options, yarn sizing and types and on and on. The correct terms or language still challenge me! So many titles or terms with such a variety of applications can get pretty confusing. Then, October brought the one-day computer weaving program workshop. Now I have another weaving challenge to work on.

As I listen at the Guild meetings I know the opportunities to learn other fiber crafts are available to each of us if we ask other members for help. I believe we also provide the opportunity to share our

fiber craft passions with others, if we let it be known we want the opportunity to share. Our Vice Presidents are your go-to ladies for this opportunity.

I remember at the first or second Day Weaving Study Group I attended one of the members said to me, "if you have questions just jump in and ask. We get pretty caught up in what we are discussing." That opened the door for me and I have been asking questions and for advise for 4 years now. The amazing thing has been I have always gotten the help I have sought and with an attitude of "if you need any other help, we are here".

I believe the Handweavers Guild of Boise Valley was built with this type of support in mind, and this prevailing attitude has continued. So if you have questions, take a chance, ask for information and help.

Here is my confession, my curiosity about dyeing is growing! Next summer when that area becomes more active I may have to attend and learn more. And by learning more, I mean beyond the box of Rit dye! This isn't a commitment yet, just a growing curiosity.

Please be ready to share one area that jumps to the top of your list where the Guild has helped and supported you with your fiber craft at our November meeting.

Oh! I forgot to mention the wide array of acquaintances and friends who have come into my life through the Guild—each of you are included in that group.

❖ Greta Ankeny, President

Membership News

Membership Directories are now available. This year a fabric sample is included. Come to the meeting to receive your copy. It is filled with lots of information about membership in the Guild.

We also have promotional materials to share with your friends. These include Guild business cards, Guild information fliers, and New Member Information fliers. Ask for these so you can share with your friends or acquaintances who may be interested in joining our great group.

❖ Rebecca Winter, Membership Officer

October Program

I would like to thank Vila Cox for presenting an awesome program on Finishing for the "TaDa" Moment. I know I came away with some great tips and tricks, which I can't wait to try out.

❖ Melanie Smith, Vice-President



Equipment Rental Information

The Guild's equipment is getting more organized and is ready to be rented. Here is a list of the equipment that is currently available and the monthly rental rate for each.

• Weaving Equipment

- * Warping board - \$5/month
- * Warping raddle - \$5/month
- * Spool rack - \$5/month
- * Inkle loom - \$5/month
- * Rigid heddle loom - \$5/month
- * Tapestry loom - \$5/month

• Spinning Equipment

- * Fricke drum carder - \$5/month
- * Coarse drum carder - \$5/month
- * Pat Green picker - \$5/month
- * Schacht wool hand cards - \$5/month
- * Cotton hand cards - \$5/month
- * Indigo Hound 4-pitch wool combs - \$5/month

• Other Equipment

- * Rug Strip cutter - \$5/month
- * Bead Loom - \$5/month
- * Display Unit - \$10/month
- * Mannequin - \$5/month

See Vila Cox to rent equipment. There are rental agreements in the library on the shelves with the equipment.

Transportation of the equipment to and from the storage location is the responsibility of the renter.

If no one else has reserved the equipment, members can extend the rental period by arrangement through the Equipment Custodian, and by paying another rental fee on a per month basis.

Equipment care is the responsibility of the renter. If damage is assessed, the renter is responsible for repair or replacement. Members who return equipment late will be responsible for paying the regular rental fees that are due for the entire time the equipment is in their possession.

Sign the short rental agreement. Pay the rental fee to the Equipment Custodian.

Make arrangements for drop-off of the equipment with the Equipment Custodian at the storage location, which is currently the First Congregational Church of Christ. Pay balance of rental fees, if any are due, to the Equipment Custodian.

❖ Vila Cox, Equipment Custodian



Study Group News

Day Weaving Study Group

The day weaving study group will meet at the home of Julie Gerrard on Tuesday, November 21st at 12.30 pm. All are welcome.

We have been studying *The Weavers Draft Book and Clothiers Assistant*, by John Hargrove, Baltimore, MD, 1792. There are about twelve people who have been regularly meeting for about six months. The last meeting for this particular study will be in November. The book contains 52 weaves, with 6 broad categories. We have discussed each structure, and samples have been or are being woven for everyone who signed up to do so. Vila Cox and Mary Berent have been leading the group. Some of the drafts are unweavable and there are some repeats.

Most of the weaves seem to be fabrics of the day to make clothing. Vila is compiling the samples and there will be a sample book for all to see in the library when they are completed.

The day weavers study group has always met to discuss the weaving people have done, to discuss any weaving problems, and to help newer weavers. This will continue. We do meet at someone's home each month, usually on the third Tuesday of the month in the afternoon. We will be deciding what our next special topic of study will be at the next meeting. Please come and see what it is all about if you haven't been before. Call Anne Oglevie 208-994-2725, if you have any questions.

◆ Anne Oglevie, Study Group Chair

Spinning Study Group

November is upon us. I don't know about you, but as it gets colder I think more about spinning and making yarn. Please plan to join us for our next study group meeting, on November 11, at Penny's home. The fun starts at 10, and goes until 12-ish. Please plan to bring your wheel, spindle, or any project you would like to work on for a fun morning of making stuff. If you have any questions, or need directions just let Melanie know.

yarnsntreads@aol.com

◆ Melanie Smith, Study Group Chair

The Rug Punch - Punch Needle Group

We will meet on October 26, at Kathy Jo West's at 7334 N Abe, Garden City.

The November Rug Punch-Punch Needle Meeting will be at Pat Day Hartwell's house at 6 S Middleton, Nampa. I will have my new shop open.

The meeting will be November 30 from 1 to 4 p.m. If you need directions, please feel free to call me at 208-466-1240.

◆ Pat Day Hartwell, Study Group Chair

Certificate of Excellence Study Group

Certificate of Excellence (COE) Study Group. COE study group will meet **December 2**, before the Christmas Pot Luck at Penny's house. If you have ever thought of earning your Certificate of Excellence this group can offer support and encouragement. All are welcome; for more information call Mary, 939-8906.

◆ Mary Berent, Study Group Chair



November Mystery Member

Who Is This Mystery Member?

This month's clues are:

1. Learned to weave in Tennessee.
2. First loom was an Inkle Loom, which she still owns.
3. Nickname as a child - Penny.

The first person to notify the newsletter editor correctly will have bragging rights for the November Mystery Member, whose identity will be published in the next Newsletter.

Last month's Mystery Member was Irene Chandler. Here are the clues given:

1. Has good skills with a chainsaw.
2. First fiber project was cross-stitch in the 1st grade.
3. Flunked springboard diving in college.

No-one was able to guess this Mystery Member. She stumped us all. There are no bragging rights this month.

◆ Rebecca Winter, Newsletter Editor



November Sample Exchange News

The Sample for the next meeting is from Melanie Smith, and is called Dimity. It is from the Forgotten Weaves Workshop. Dimity is a very easy way add texture to fine threads, and is traditionally woven with either white or natural colored threads. Melanie used 20/2 white cotton.

- ◆ Jinks Hunter, Sample Chair



Dimity, by Melanie Smith

Sample Exchange Box

Members may pull samples from the Sample Exchange Box at each regular guild meeting. And remember to check your name off the list in each file folder. If you would like to participate or have questions, contact the Sample Chairperson. Also, remember, there are samples from last year that are available to anyone toward the back of the box.



October Meeting Minutes

Present: Lily Lee, Jenni Jimmerson, Melanie Smith, Penny Schraufnagel, Janet Stanger, Jinks Hunter, Cindy Schafer, Linda Newville, Jane Olsen, Tracy Redhead, Mary Chown, Clarice Jernigan, Pat Ann, Julie Gerrard, Greta Ankeny, Rebecca Winter, Pat Blanchard, Marita Turner, Nancy Alzola, Lynn Ruggles, Esther Kleinkauf, Mary Berent, Anne Oglevie, Vila Cox, Phyllis Bulgin, Carol Freeman.

Greta Ankeny, President

Continuing the theme from the Newsletter Story "From Your President: Why Did I Start Weaving?" members were asked to turn to the person sitting next to them and share how they got started with their favorite fiber art process.

Penny Schraufnagel & Melanie Smith, VP Report

Reminder -"Computer Weaving with Fiberworks PCW" Workshop Mary Berent will teach on Saturday, October 21st 10AM at the Public Library downtown Boise. A sign up sheet was distributed. This workshop is free. All participants must bring their own laptop and have the Fiberworks software downloaded onto their device before the workshop. There is a free demo-version of Fiberworks available online.

Christmas Exchange -Mug Rugs

For this year's Christmas exchange, all who wish to participate must bring in mug rugs that they have made themselves (no purchased ones). The number that you contribute will be the number that you receive through the exchange process. Each participant will acquire a collection of original mug rugs.

Jinks Hunter -Rug Punch Mug Rug Workshop

A Rug Punch Mug Rug Workshop will be held as the program for next month's meeting on Saturday, November 4th. A sign up sheet was distributed. Needle punches will be available for participants to borrow during the workshop. If you plan to purchase one in advance of the workshop a size 9 Amy Oxford is a recommended standard, but many other options would work.

Show & Tell

11 members had shows and 3 had tells.

Highlights: Rebecca Winter brought in samples she completed using weave patterns in an issue of Shuttle Craft magazine from 1942 and completed an upholstered journal holder, Marita Turner shared a recently completed knitted scarf, Esther Kleinkauf completed her second weaving ever (go Esther!) and some ice dyeing samples, Mary Berent brought in tea bag string 16 shaft twill samples exploring circle patterns in preparation for this year's intensive, Cindy Schafer brought in a Bigelow wall hanging done using rug punch with tea bag string that was hand-dyed with Constant Comment tea and commercial dye.

Fiber Arts Trivia - Lily Lee, Secretary

Another month of Fiber Arts Trivia questionnaires were distributed to members present for this cumulative competition.

ANWG, Rebecca Winter

Great newsletter from ANWG! Our guild plans to submit our newly completed Membership Directories for inclusion in the ANWG Newsletter.

Treasurer, Vila Cox We are on budget.

Membership Chair, Rebecca Winter

Mystery Member

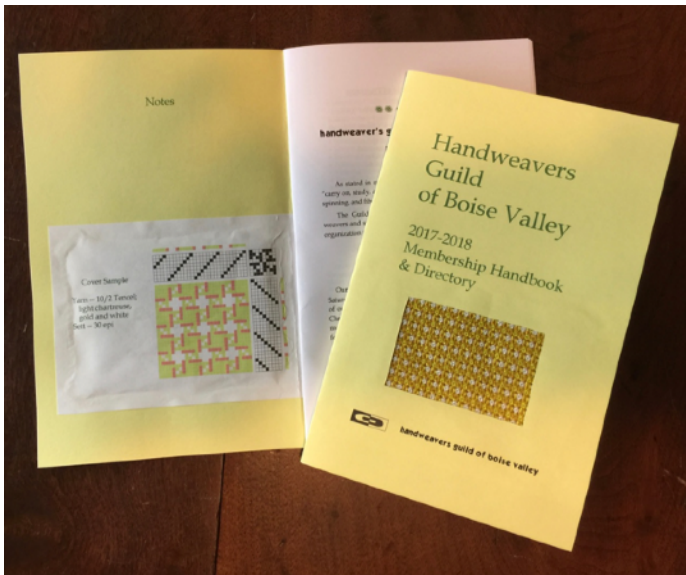
Clues:

1. Has good skills with a chainsaw.
(Ed. Note: May we say "mad skills?")
2. First fiber project was cross-stitch in the 1st grade.
3. Flunked springboard diving in college.

The Mystery Member is Irene "Chainsaw" Chandler!
Nobody guessed it correctly.

New Membership Directories

There is a sample woven by Rebecca Winter on the cover. The draft for the weaving is on the inside of the cover.



New Guild business cards are also available for membership outreach.

Historian, Rebecca Winter

A new pamphlet has been developed with the same font used with the Handweavers Guild of Boise Valley logo since 1979. Lynn Ruggles found out which font this is. It was originally designed in 1928.

Librarian, Cindy Schafer

The Handweavers Guild of America recently deaccessioned their library, distributing requested materials to local guilds. Of the 100 books we requested our guild received between 40-50 new books including

issues of Shuttle Craft from 1924-1960! This increases the value of our library's collection by about \$3000. The value was previously \$17,000.

Library Equipment, Vila Cox

On October 9th at 10AM a group of volunteers led by Vila will assemble shelving in the library to organize and expand the equipment available. We are ordering an 8-harness Macomber loom to be available for rent.

Event Coordinator, Janet Stanger

Thank you to everyone who helped at the Western Idaho Fair. Next year we will have a full booth, which will enable us to show more processes that we do.

We have been invited along with the Quilters Guild to participate in an upcoming event with area K-12 schools where 3000 students will visit to learn about Idaho history.

Sample Box, Jinks Hunter

Greta Ankeny wove this month's sample.

Newsletter Editor, Rebecca Winter

The next newsletter will include a selection of Circle Drafts (weaving drafts focusing on circles) to inspire members for the upcoming Weaving Intensive. The intensive is like a three-day study group. This year's intensive will take place at Stevens-Henager College in Nampa. The fee is \$25. All participants will receive a notebook with samples they weave on everyone's looms. A sign up sheet will be available at next month's meeting.

Webmaster, Vila Cox

Email with any feedback or suggestions for the website.

Study Groups

Day Weaving Study Group, Chair -Anne Oglevie -
Currently studying a historical book

COE Study Group, Chair -Mary Berent -Meets before the regular meeting every other month. The December meeting will be at Penny Schraufnagel's house at 10AM.

Spinning Study Group, Chair -Melanie Smith -Meets at Penny Schraufnagel's house on the second Saturday of the month.

Bobbin Lace Study Group, Chair -Vila Cox, Study Group Chair -Meets 2nd Tuesday each month 10am at Vila Cox's house.

Rug Punch Study Group, Chair -Jinks Hunter -Meets the 4th Thursday of the month at Kathy Joe West's house.

❖ Respectfully submitted, Lily Lee, Secretary



Officers and Chairs

- President: Greta Ankeny 208-318-6028
- Vice-presidents: Melanie Smith 208-385-0085
& Penny Schraufnagel 208-208-342-1288
- Secretary: Lily Martina Lee 208-922-8612
- Treasurer: Vila Cox 208-323-7736
- Membership Officer: Rebecca Winter 208-859-2822
- Librarians: Cindy Schafer 208-375-6736 & Joan Sheehan 208-794-6049
- Web Master: Vila Cox 208-323-7736
- Newsletter Editor: Rebecca Winter 208-859-2822
- Sample Exchange: Jinks Hunter 208-867-2953
- Equipment: Vila Cox 208-323-7736
- Events Coordinator: Janet Stanger 208-377-0746
- Spinning Study Group: Melanie Smith 208-385-0085
- Weaving Intensive: Melanie Smith 208-385-0085
- Day Weaving Study Group: Anne Oglevie
208-994-2725
- COE Study Group: Mary Berent 208-939-8906
- Bobbin Lace Study Group: Vila Cox 208-323-7736
- Rug & Needle Punch Meeting: Pat Day Hartwell
208-459-4324

Website

<http://www.handweavers-guild-boise.org>



Editor's Note

Did you notice the new lettering font? In 1979 this font first appeared in the Newsletter for the Guild. Prior to that time the Guild name on the Newsletter was handwritten, and roughly, I might add. The little shuttle-shaped logo was also hand drawn. They both appeared more neatly drawn and a bit more formalized at the beginning of the Guild year in 1979, with the September Newsletter.

I am sending out a huge "thank you" to Lynn Ruggles, who has expertise in fonts, for finding the name of our font. It is called Kabel, originated in 1928. I was able to find free electronic access to this font online.

Our font is also evidenced in some of the promotional Membership documents.

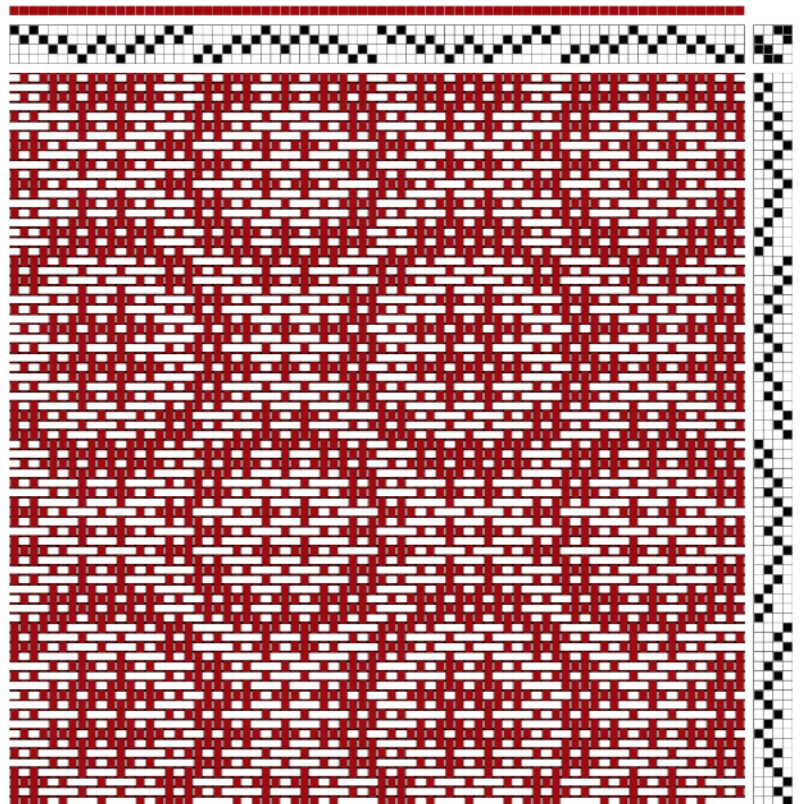
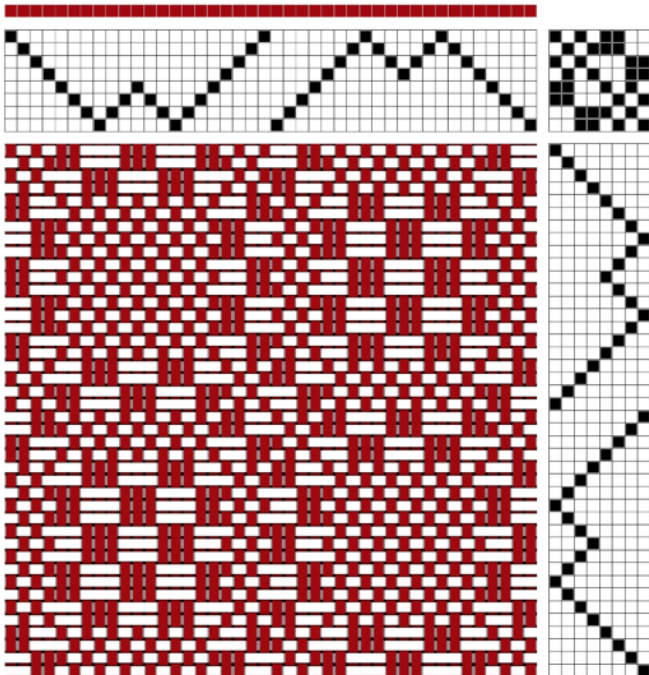
Thanks, Lynn, it is great fun to carry on the tradition.

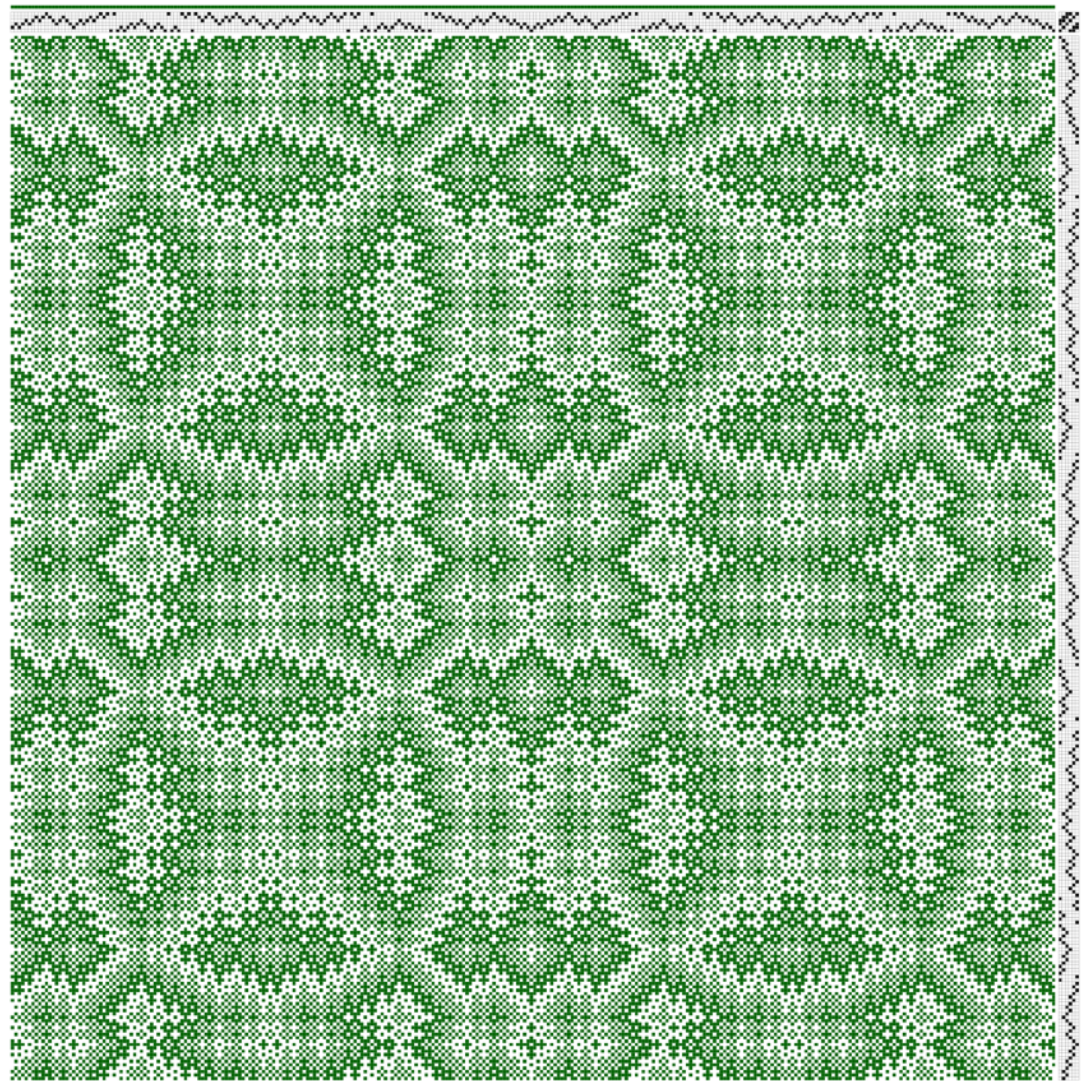
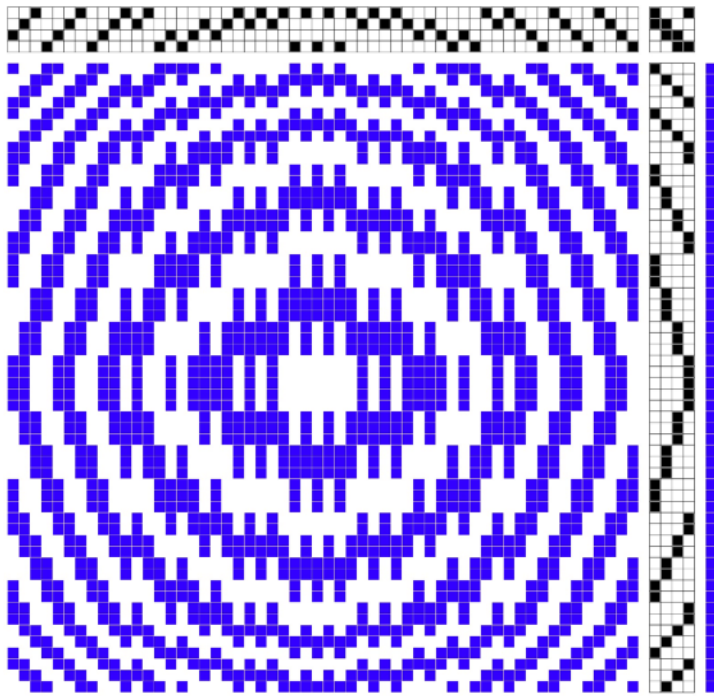
◆ Rebecca Winter, Newsletter Editor/Historian

Circle Drafts - Inspiration for the 2018 Weaving Intensive

Here are more drafts provided by Mary Berent.

The red ones are twill. The blue draft on the next page is Overshot, and the green draft is a 6 harness Crackle. If you would like a more complete draft of the latter, just ask.



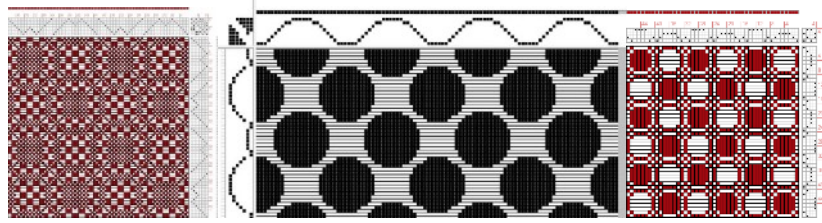


The monthly newsletter from the



handweavers guild of boise valley, inc.

CIRCLES!



handweavers guild of boise valley

2018 Weaving Intensive

January 13-15 - 10 am to 4 pm - Cost a mere \$25.00

At Stevens-Henager College, 16819 N Marketplace Blvd, Nampa, ID 83687

Come and join the fun.

What is the Intensive Study Group?

- The Intensive is a “teacher-less” workshop. We will each share in leading the group.
- At the beginning of the three-day session, each person will describe what they have put on their loom.
- Then everyone will have an opportunity to weave a sample from each loom, in a round robin format.
- Everyone is there to learn and help others by sharing what they have learned.

Before the Intensive --

- Select a draft with some manner of circles in the design.
- Do some research on the topic you have chosen so you can explain the theory and the draft you have prepared, and be able to tell others what they need to know to weave their sample.
- Make notes of what you learned during your research.

What is needed --

- A loom warped and ready to go. The weaver may choose any yarn that would be appropriate to the weave draft.
- Plan for a sample large enough to show the weave, at least 4 to 8 inches square.
- A warp length of 4 to 5 yards is suggested.
- A weaving draft and information about the Circle design selected.
- Shuttles and weft yarn to be left at the loom for others to use when weaving their samples.
- A short handout would be nice for everyone to include in their notebook.

Drafts are due ahead of time --

- Printable draft sheets need to be turned in by January 6, 2017, so that copies can be made and notebooks prepared.
- Each participant will receive a notebook containing all the drafts, handouts, and sheet protectors to put their completed samples in.

You will also want to bring --

- Your favorite way of identifying your samples, such as tags or masking tape.
- A thick waste yarn to weave in between samples to separate them. If you choose a distinctive yarn, then it will be easier to distinguish who the sample belongs to at the end.
- Scissors, notepaper, pen, needles, weights, post-it notes, or other items in your weaving toolkit.
- Feel free to bring extra yarn for weft if you would like to experiment with something different as you weave some samples.

Other details --

- The Intensive is open to Guild members. If a non-member wishes to attend, we invite them to join the Guild.
- Email or give your drafts, notes, or handouts to Melanie Smith by January 6, so that she will have time to get the notebooks assembled. If emailing, send a .pdf or Word .doc.
- Mentors are available, if you need assistance. Please ask.
- Please fill out the form below, and turn in your fee to hold your place in the Intensive.

Name _____ Email _____

Type of loom _____ Number of Harnesses _____

*If you would like to attend the intensive, but don't have a loom there are looms in the guild that can be borrowed, just let Melanie know. yarnsthreads@aol.com or 208-608-0101