

# Connecting Threads

**Handweavers Guild of Boise Valley  
November, 2021**

## ~ Come in Person to the Meeting ~ November 6, 2021 ~

The meeting will be held at the  
First Congregational Church of Christ,  
2201 Woodlawn, Boise, in the Banquet Room.

Masks required, per the church.

Or Join the Meeting via Zoom at this link:

[https://us02web.zoom.us/j/87285190830?  
pwd=bkllS010WHRXOHRXTll0OUlYa2VJQT09](https://us02web.zoom.us/j/87285190830?pwd=bkllS010WHRXOHRXTll0OUlYa2VJQT09)

10:00 a.m. - Board Meeting - All are Welcome

11:00 a.m. - Regular Meeting, Show-and-Tell, and .....

### Color in Weaving - by Cynthia Newman

Starting with block weaves for the design, we will explore how to play with color and to create the mood of the cloth from energizing to calm. Moving away from "as drawn in" patterns, just for a moment, we will think about color and pattern in abstraction, and about how to use all of our senses to approach color intuitively.

◆ Mary Berent, Vice President

Handwoven  
by Cynthia Newman



### December Program ~Get Ready!

I'm sure everyone saw via the [groups.io](#) email from October 17, the "Design Challenge" proposed by Vila Cox is being resurrected! The grand finale will be at the December meeting. As you are looking forward to the December meeting, go to your computer and design a few cool drafts to contribute to the Challenge. This is a creative group, so there should be some really creative designs. Looking forward to the fun. Send your .wif files or paper designs to Vila Cox.

Note: We will forego the Potluck this year. However, we hope to provide a little festivity. The December meeting will be held as usual at the church.

◆ Mary Berent, Vice President

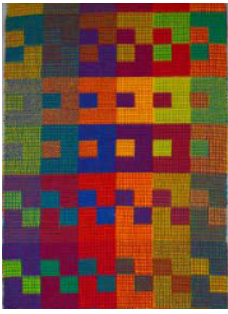
### 2022 Weaving Intensive ~ Start Your Studying

The topic of the Intensive has been chosen. It is "Twill." Here's why we have decided to stay with the topic chosen at the last Intensive held in 2020. We have several new weavers and this will be a topic they could easily tackle. I am assured the weavers with the most experience are happy with this topic also, because they love to come to share and have some interaction time with other weavers. Besides, Twill is something one could study for the rest of one's weaving life and still have things to learn.

Remember this is a study group, and studying is the main purpose. So hit the books now to find that one twill you would like to know more about. Find the flier with the details later in this Newsletter.

◆ Rebecca Winter, Intensive Study Group Co-Chair





## Doubleweave - Double Rainbow Workshop by Jennifer Moore

There are still a couple of spaces available in the upcoming Double Rainbows Zoom Workshop by Jennifer Moore. See the September Newsletter for more details. Contact Mary Berent or Connie Griffin for more information.

Participants will receive an email with the Zoom link prior to the start of the Workshop.

◆ Mary Berent & Connie Griffin, Vice Presidents

### From Your President

Who or what is Omar? He was a Corriedale sheep who provided Pat Ann with yearly fleece. The Pat Ann Education Fund committee members and the workers who repackaged Pat's yarn and fiber always enjoyed coming across some of Omar's fine fiber or yarn. And now Omar is famous - at least with us!

There is tremendous benefit for the Guild from the Pat Ann donations. This is something to be frequently repeated. All members will reap the benefits. The spinners have a treasure trove of fiber saved for learning. All members participating in workshops or other educational events will benefit. After the Sale at the Twisted Ewe a proposal will be forthcoming from the committee about the details.

Thank you to the members who have or are assisting in the Pat Ann Sale. I will plan to publish a list in the next Newsletter, so we can all thank them for the hard work and voluntarism provided to the Guild.

Fiber on, my friends. We've got this.

◆ Rebecca Winter, President

### Sample Exchange

The sample for November is handspun baby alpaca by Julie Gerrard. The fiber is really fine natural alpaca from The Sheep Shed in Nampa. It is 2 ply yarn that was spun using a short, forward draft.

◆ Julie Gerrard, Sample Chair

### Open House ~ sit/ spin /socialize/ knit ~ whatever

Black Friday the 26th of November from 11:00 am to 3:00 pm and Saturday the 27th of November 11:00 to 3:00 pm. Please come by and visit!

◆ Mitzi Meyers

### Calendar of Events

November 6, 2021~

10:00 a.m. - Board Meeting

11:00 a.m. - Color in Weaving,  
by Cynthia Newman

At the First Congregational Church of Christ,  
2201 Woodlawn, Boise, in the Banquet Room & via  
Zoom - Link on Page 1.

November 9, 2021 ~ Bobbin Lace

10:00 a.m. ~ At Vila Cox's home

November 16, 2021 ~ Day Weaving Study Group

10:30 a.m. ~ At Mary Berent's home

November 30, 2021 ~ Garment Study Group

10:30 a.m. ~ At Jenni Jimmerson's home

Thursday Fiber Friends Zoom

Every Thursday ~ 2:00 p.m.

Spinning Study Group ~ Activities TBA



~~~~~  
November 8, 11, 15, & 18, 2021 ~

Double Rainbow Workshop, by Jennifer Moore,  
Delivered Via Zoom

January 15, 16, & 17, 2022 ~ Weaving Intensive Study Group

April, 2021 ~

Color Compositions Workshop, by Cynthia Newman

May, 2021 ~

Understanding Twist Workshop, by Lynn Ruggles



# 2022 Weaving Intensive Study Group

Handweavers Guild of Boise Valley

## Twill

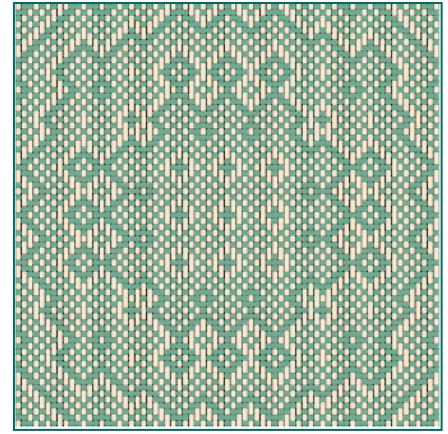
A Weaving Retreat, with Weaving Presented by Each Participant

Saturday, Sunday, and Monday ~ January 15, 16 & 17, 2022

9 AM to 5 PM ~ Location ~ the Bowmont Community Center

Fee - \$20.00

With support from the Pat Ann Education Fund in the form of used Binders and Page Protectors.



- It's time to start thinking about the Weaving Intensive! Choose a favorite Twill Weave - one you have been wanting to study, and come share it with the group. Join us for learning and fun!
- This will be our usual "teacherless" workshop. We each have the opportunity to be the expert in our chosen area of study. There are mentors available if you need some help or direction. Please ask.
- For this workshop each participant will warp their loom using their chosen twill draft. This will then be a round robin type of workshop, in which each person moves from loom to loom weaving samples as they wish.
- The weaver may also choose any yarn that would be appropriate for the draft. The weaver will also provide all the materials needed to weave samples on their loom. Calculate your warp length by the number of possible samples needed. Generally, if you are planning 4 to 6-inch samples, 4 to 5 yards would suffice. Warp width would also be best at about 6 inches, or a width needed to show your design.
- At the beginning of the workshop, the weaver will present their Twill to the group, and give instructions for weaving. Plan for the presentations to be approximately 8 to 10 minutes. Include an explanation of the weave structure, the reason for your choice of yarn, tips and techniques, why you chose this particular draft, and any quirks or preferences for your loom.
- Also, you may wish to plan to weave your own sample ahead of time so you can teach us from experience how this sample works. Another possibility would be to cut your sample from the loom and retie. This would give the opportunity to show finishing methods applicable to the sample.
- We recognize, and also value, the camaraderie and social aspect of the Intensive. We envision this opportunity to have great potential for experimentation and learning. Just think of the benefit of three days of discussion and exploration with others of like mind.
- Printable project plans and draft sheets (electronic or hard copy) will be submitted no later than January 4, 2022. Each participant will receive a binder containing all of the plan sheets and drafts. **Please include all information required for reproducing this cloth.** This includes 5 things - threading, tie-up, treadling, yarn and sett. We need more than just a .wif file. Additional notes about what you learned are also wonderful to have. There are Weaving Record Sheets available in the Library and on the Guild website [HERE](#).

Some necessary workshop information:

- ★ Each participant will bring a previously warped loom to the workshop.
- ★ Each loom will be warped using a twill draft of the weaver's choice.
- ★ Participants will provide their own warp and weft materials to be used on their loom.
- ★ Mentors are available. Please ask, if you would like to discuss your ideas.
- ★ Send your Instructions and draft in printable form to Rebecca by January 4, 2022. This is a final deadline.
- ★ The workshop is open to members of the guild. If a non-member wishes to attend the Intensive, we invite them to first join the guild.
- ★ There are a couple of Guild looms available, if you need one. We do not charge rent if you are using these for Guild sponsored Workshops or Intensives.
- ★ Keep this information available, as it is the only pre-workshop information you will receive.
- ★ Your payment of the fee is your confirmation for participation in this event.
- ★ The Guild will accept cancellations with a refund through January 4, 2021. After that date cancellations will be considered on an individual basis.

Return the following with your fee to Connie Griffin or Rebecca Winter.

Name \_\_\_\_\_ Address \_\_\_\_\_

Phone \_\_\_\_\_ email \_\_\_\_\_

Fee amount included \$ \_\_\_\_\_



## Day Weaving Study Group

Day Weaving will be meeting at Mary Berent's home in November. The date is Tuesday, November 16, 10:30 am. Mary's address can be found in the Guild directory. All Guild members are welcome. Bring your projects and questions.

- ◆ Greta Ankeny, Study Group Chair

## Garment Study Group

Garment Study group will be meeting November 30, 10:30 at Jenni Jimmerson's home. If you have created a garment or want help planning a garment from your handwoven fabric this is the group for you! This group will provide support and encouragement to help you along your way.

- ◆ Greta Ankeny, Study Group Chair

## Thursday Fiber Friends Zoom

We would like to extend an invite for you to zoom-in and join us. We started meeting weekly via zoom when we were all mostly staying home during the worst of covid prior to vaccines. Two of our regular members have moved away from Boise and it is a lovely way to stay in touch. It is a great way to just hang out at home, show each other what we are working on, ask about project issues, inspire, encourage, and laugh. Hope you'll join every Thursday at 2:00 pm. Find us on zoom at:

<https://us02web.zoom.us/j/84563744178?pwd=WVl4WWNGRmJmd3A1KzIzaUtEaUtTZz09>

- ◆ Jinks Hunter, Study Group Chair

## Bobbin Lace Study Group

The Bobbin Lace group meets the second Tuesday of each month. Next meeting is November 9th, 10am, at Vila's

- ◆ Vila Cox, Study Group Chair



## Meeting Minutes for October 2, 2021

The meeting was called to order by president Rebecca Winter.

Members present: President Rebecca Winter, co-vice president Connie Griffin, treasurer Mitzi Meyers, past president Doug Ranck, secretary Sally Johnston, Barbara Redmond, Linda Morton-Keithly, Esther Kleinkauf, Irene Chandler, Jeannie Phillips, Marita Turner, Kenna Ogg, Raelene Viste, Janet Stanger, Jinks Hunter, Julie Gerrard, Jinni Jimmerson, Carol Freeman, Cindy Griewe, Elizabeth ?, and Dyan Lay.

Introduction of members. Happy to report that Cindy Griewe who came to our meeting for the first time last month joined the guild and is already making use of our rental equipment and library. There was also a newcomer today. Let's hope she enjoys and wants to join the guild.

Business:

Report about the Pat Ann the Equipment Fund. Ten percent of the sale of her equipment was given to the guild. We are receiving 100% of yarn and wool fiber proceeds. We will be having a Pop-up sale at the Twisted Ewe October 23 & 24. Volunteers are needed on Wednesdays this month to repack Pat Ann's yarn and fiber for the sale. We also need volunteers to load up cars and transport items to the store, and to volunteer working at the Twisted Ewe from 11:00 to 5:00 on Saturday and 12:00 to 4:00 on Sunday, including someone to demonstrate weaving and spinning. Sign up sheets were passed around.



Vice president report. Cynthia Newman will present a program at the end of our meeting on Saturday November 6<sup>th</sup>. Jennifer Moore will lead a workshop on Doubleweave in November via Zoom. In January the program will be made up of members who would like to share their favorite fiber book and why.

Membership report. Forms are available for member sign ups. Thanks to Dagmar, who sent out reminders for renewing their membership, we now have 53 members.

Treasurers report. Mitzi assured us that we have plenty of money for our needs now.

Secretary report. We are reinstating the sign up sheet for members attending meetings.

Community Outreach report. Janet relayed that the Hidden Springs Farm Day was a success. Both she and Rebecca were there.

Sample exchange report. Julie requested more volunteers.

Show and tell resulted in lots of oohs and aahs, as members shared their artistry.

After show and tell a break was taken for visiting with friends and as well as visiting the library and Pat Ann's roving and yarn for sale.

The program was introduced by Connie (vice president). Jinks Hunter shared "Some Things I Have Learned about Sheep, Wool and Spinning." What an education. We all learned something new today. Thank you, Jinks.

◆ Respectfully submitted, Sally Johnston, Secretary

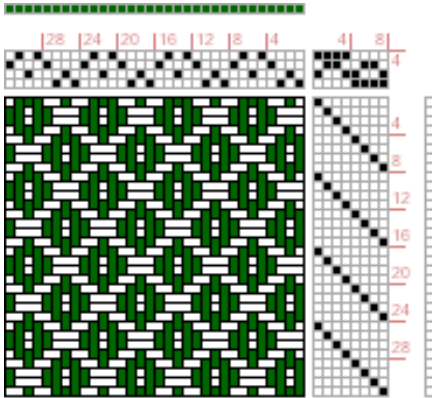


### [More Donations to the Guild](#)

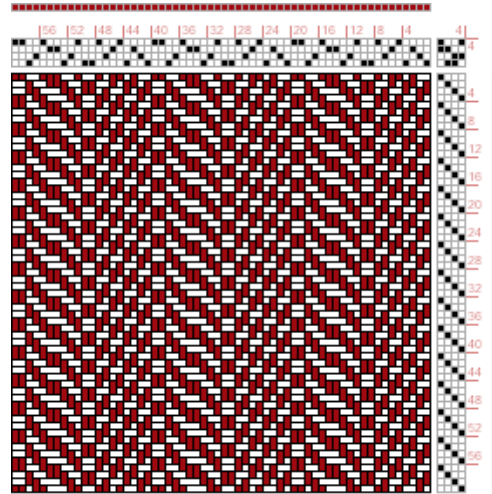
Once again yarn has been donated to the Guild. Most of it is various sizes of Rowan with some other brands tossed in for a bit of variety. Look for these yarns at the meetings or contact Vila Cox.



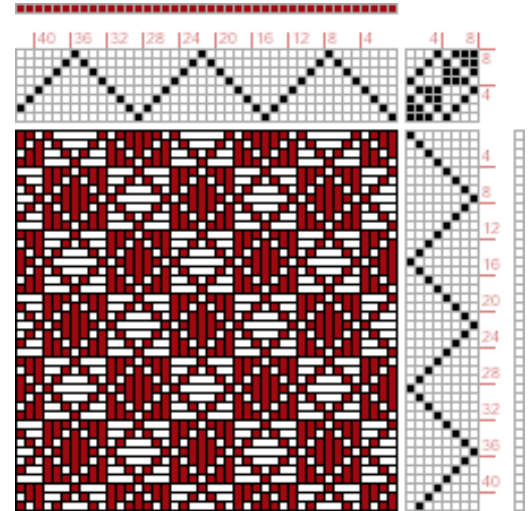
## Some Fun Twills ~ For Inspiration



Handweaving.net #42128



Handweaving.net #43561



Handweaving.net #34271

### Officers and Chairs

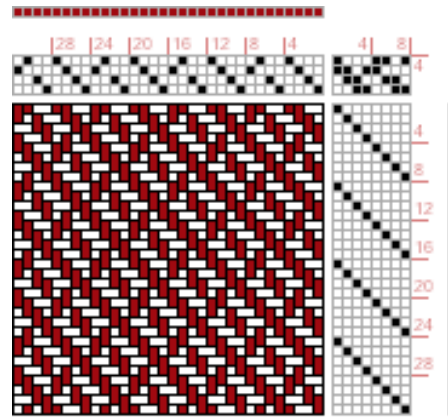
- President - Rebecca Winter
- Vice President - Mary Berent
- Vice President - Connie Griffin
- Secretary - Sally Johnston
- Treasurer - Mitzi Meyers
- Membership Officer - Dagmar Rapp
- Librarian - Sally Johnston
- Web Master - Vila Cox
- Newsletter Editor - Rebecca Winter
- Sample Exchange - Julie Gerrard
- Outreach Committee - Janet Stanger
- Social Media - Dyan Lay
- ANWG Representative - Connie Griffin
- Spinning Study Group - Jinks Hunter & Dagmar Rapp
- Weaving Intensive Study Group - Connie Griffin & Rebecca Winter
- Day Weaving Study Group - Greta Ankeny
- Garment Study Group - Greta Ankeny
- COE Study Group - Mary Berent
- Bobbin Lace Study Group - Vila Cox
- Thursday Fiber Friends Zoom - Jinks Hunter

### Website

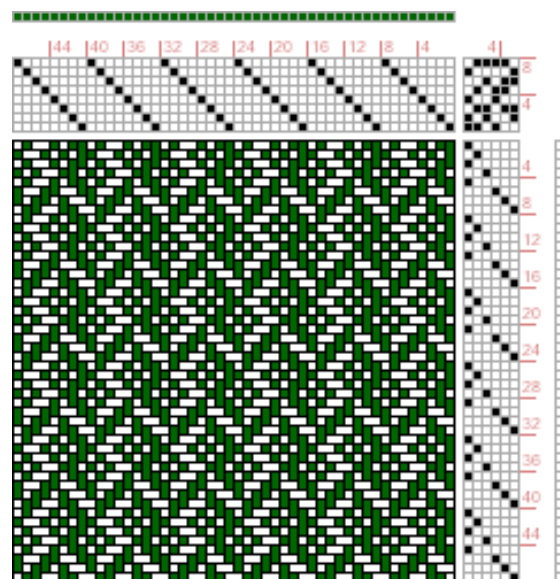
<http://www.handweavers-guild-boise.org>

### Mailing Address

PO Box 6258, Boise, ID 83707



Handweaving.net #42122



Handweaving.net #71508