

Connecting Threads

Handweavers Guild of Boise Valley

October, 2009

Calendar of Events

- October 3, 2009 - Board Meeting
Moxie Java, 1122 S. Vista, Boise
10:00 am
- October 3, 2009 - Guild Meeting
Boise Historical Museum, Adelman House
11:30 am - Business Meeting
12 noon - Social time
1:00 p.m. Program - **The History of Color**
by **Mary Berent**
- October 8, 2009 - Spinning Study Group
Maralyn's clubhouse in Meridian
6:30-8:30 p.m.
- October 20, 2009 - Day Weaving Study Group
At the home of Rebecca Winter
1 p.m.
- January 16, 17, & 18, 2010 - Weaving Intensive
Block Substitution
- March 26, 27 and 28, 2010 - Weaving Workshop
There Must be 50 Ways to Weave your Color,
with Ruby Leslie

October Program

Our October Program will be presented by Mary Berent - "The History of Color." Based on the book 'A Perfect Red' by Amy Butler Greenfield, Mary will lead us through empires, espionage and the quest for the perfect and unfading red. This is definitely a program not to be missed. You will never view 'red' or any other color the same again.



Notice: We would like to photograph the linen towels that were exchanged last December. Please bring your towel to the October meeting for a group photo.



Weaving Workshop: There must be 50 Ways to Weave your Color

Come join in the weaving workshop taught by
Ruby Leslie
March 26,27,28th, 2010

"There Must be 50 Ways to Weave your Color" uses readily available, commercially dyed yarns which produce results that often appear hand painted or custom dyed. This workshop combines lecture, discussion, and hands-on weaving in a round-robin format. "50 Ways" is appropriate for weavers from beginners (who can dress a loom and read a draft) to advanced levels, because working with color is primarily a design issue. Weavers spend a lot of time mastering the basics of their craft and their equipment, yet often have little opportunity to immerse themselves in studio arts design coursework or conceptual thinking. This workshop attempts to bridge the gap and give weavers the tools they need to approach designing with confidence while gaining a broader understanding of how to work with color, without having to master the art of color theory.

Mark your calendars.

Sign up sheet is on page 7 of this Newsletter.
The cost if the Workshop is \$220.00.

Challenge 2009

What Can You Do With Monochromatic? Julie Gerrard, Chair

Museum Comes to Life is on Saturday, September 26 from 9:00 a.m. to 5:00 p.m. The Challenge will be set up in the Adelman House for the public to vote on their favorite items from each category. The committee and other volunteers will be meeting at the Adelman House on Friday afternoon, September 25 at 1 p.m. to set up the Challenge. We will also be setting up a display of items that guild members have made over the years. So, if you have something you would like to display, please make arrangements with me or one of the committee members (Vila Cox, Mitzi Meyers, Penny Schraufnagel, and Rebecca Winter) to get your items or let us know that you will deliver them to the Adelman House on Friday by 2:00 p.m.

The St. Luke's Women's Fitness Celebration is the same day as Museum Comes to Life so plan your route to the museum carefully as Capitol Blvd., Crescent Rim and Americana will be closed from 7:00 a.m. to 10:30 p.m. for the race. Also, remember to park in the parking lot behind the museum on Myrtle Street in the Housing Authority parking lot. DO NOT park in the Flick's parking lot as your vehicle will be towed away.

MUSEUM COMES TO LIFE SCHEDULE, SATURDAY, September 26, 2009

All Day	9:00-11:30	10:00-12:30	11:00-1:30	12:00-2:30	1:00-3:30	2:00-5:00
Vila Cox	Ivy DeHart	Caroline Dade	Janet Stanger			Pat Ann*
Rebecca Winter	Al	Al				Jean Zaske
Lynn Ruggles						Al
Penny Schraufnagel						
Julie Gerrard						
Mitzi Meyers	Where needed	Till noon				
Paulene Robbins (time unknown)						

* I will be here at 9AM Saturday with my entry. Pat

If you did not sign up to participate, it is not too late to join us. It's always fun to talk to folks and spread the word about weaving and spinning. I hope to see you there.

Deciphering the Color Code



Bring **RED** to the October guild meeting. Did anyone choose red for the challenge of using monochromatic color? If so, bring it! Also, if you have tints and tones of red, bring those too and let's see if we can create a monochromatic scale using red as the hue. Colors often have meanings associated with them. In a small book I have on mandalas, red is the color of blood and of life. It symbolizes vibrant energy,

passion, determination, strength of will and motivation. It is also connected with anger. In another book, red's positive qualities are listed as sex, passion, strength and negative qualities as anger, aggression, impulse. What does red mean to you?



Monthly Sample Exchange

The samples available to members at the October 3rd meeting are from our President, Al Hayden. It is a beautiful 16 harness point twill.

Warp - white 5/2 mercerized cotton
Weft - red cottolin (50% cotton and 50% linen)
Sett - 24 epi



Al's Sample

Reverse

Remember to pull your samples from the Sample Exchange Box at each regular Guild meeting. And remember to check your name off the list in each file folder.

If you are unable to attend the regular meetings and would like to receive your samples, you may send SASE to the sample chair and she will send out your sample each month.

If you would like participate or have questions, contact the Sample Chair, Rebecca Winter

Guild Meeting Minutes

AUGUST 29, 2009

The meeting was called to order by President Al Hayden.

Attendance: Al Hayden, Cece Stricklin, Mary Berent, Rebecca Winter, Lynn Ruggles, Jean Zaske, Vila Cox, Carolyn Dade, Cynthia Newman, Penny Schraufnagel, Irene Chandler, Julie Gerrard, Pat Ann, Mitzi Meyers, Ivy DeHart, Cindy Schafer, Katrina Duckett, Janet Stanger and Nancy Swanson.



Vice Presidents report: Cece said that the Ruby Leslie workshop "50 Ways to Weave Your Color" is scheduled for March 2010. Kathy will have a signup sheet in the next newsletter.

Mary Berent will be presenting the program at the October meeting - **The History of Color**.

The December meeting will be a luncheon and an exchange of some kind, to be announced at a later date.

Membership: Penny said that there are 25 members that have paid their dues to date. Lynn is putting together the membership directory and Penny will be maintaining the membership data. Vila will be going through the Yahoo group and cleaning it up by taking out old members. Rebecca will be cleaning out the "snail mail" membership list.

Treasurer's Report: Irene said that account balance is \$3538.03. If anyone has outstanding bills please turn them in. The balance does not reflect membership checks received on the day of the meeting.

Executive Board: The board will meet before the guild meeting next month on October 3rd at Moxie Java on Vista at 10 a.m., everyone is welcome to attend.



Newsletter Editor: Rebecca said that the deadline for submitting information for the newsletter is about 20 days before the next meeting - usually the 12th through the 15th of the month prior to the meeting date. If you have any input for the newsletter please let Rebecca know.

Sample Exchange: The sample box is available at every meeting. Be sure to mark your name off. Rebecca brought an assortment of samples that she has woven.

Day Weaving Group: The day weaving group meets the 3rd Tuesday of each month. September's meeting will be held at Mary Berent's home in Eagle.

COE Study Group: Mary said that the COE group is a support system for people working on the COE or for people who want to use the COE guidelines as a study group.

Web Master: Vila will be updating the website. If you are "in charge of something" please check the website to see if the information listed is correct.

Spinning group: Lynn said that the spinning group meets on the 2nd Thursday of the month from 6:30 - 8:30 p.m. The September, October and December meetings will be at Marilyn's place. The November meeting will be at Penny's house.

2010 Weaving Intensive: The weaving intensive is set for January. The focus this year is "block substitution". We will all be working on the same profile draft in a round robin "teacherless workshop" style. The flyer will be out next month. The cost is \$30 for 3 days and will be held at the Caldwell Library. Vila, Mary and Rebecca will guide the group using Madelyn van der Hoogt and Debora Chandler techniques.

"Creativity is a type of learning process where the teacher and the pupil are located in the same individual" Arthur Koestler

The Challenge: "What can you do with monochromatic. Julie said that the Challenge will be September 26th from 10 to 5 p.m.. Please note that the paper advertises "Museum comes to Life" from 9 a.m. to 5 p.m.. We will be in the Adelman House this year. Bring any display items on Friday during the setup. Vila, Rebecca, Mitzi, Penny and Julie G are the committee members.



Library news: Pat Ann said that the guild has acquired a copy of the guild's rug weaving intensive with samples, a Jason Collingwood workshop binder, Ann Field's Collapse book and a book on Shaker towels.

Secretary: Irene will take notes for Cynthia at the October board and guild meeting.

Gold Bag: The gold bag went to Lynn Ruggles.

Announcements:

Shirley Sterling has been ill.

Cleo Gallinger has been ill.

Teaching: Lynn has signed up to teach spinning at Fuzz. Penny has the names of 2 interested spinners from the Fair. Vila will be offering private weaving lessons; there is information on her website.

Mitzi brought some "freebee" polyester yarn.

Al said that a new sidewalk is in order in front of the Pioneer village.

We forgot to photograph the linen towels that were exchanged. Bring your towel to the October meeting for a group photo.

Convergence 2010 is in Albuquerque New Mexico this year, July 18-25th.

October meeting: The next meeting will be held on October 3rd at the Adelman House.

Show and tell:

Mary Berent showed a hand dyed double weave sample that she wove from Margie Thompson's 1803 manuscript.

Cece brought a fabric woven with handspun silk on an overshot warp.

Cindy brought a linen towel that she made for the towel exchange, but she missed the June meeting. The pattern was cat tracks and snail trails.

Rebecca showed a shadow weave fabric woven with Harrisville yarn, and her notebook from the Jason Collingwood rug workshop.

Julie Gerrard passed around a linen table cloth with appliqué possibly from the South Pacific.

❖ Respectfully submitted, Cynthia Newman, Secretary

From Mary Atwater **Shuttle Craft Bulletin, July, 1932**

About Signatures on Our Art Work

"An important part of a work of art is the signature of the artist, and when we weavers make an outstanding piece -- an important coverlet, for instance -- we often feel that it would be pleasant to put a name, or initials, and a date modestly in the hem for the edification of future generations. An embroidered name, somehow, does not satisfy -- the inscription should be a part of the fabric."

Ramblings from the President

Hopefully your summer has not been too hectic. By the time you get your newsletter it will be Fall. Do your color, fiber and projects reflect the changing of the season? This year it seems that the season is changing by the calendar, but not the weather. If, like me, your weaving (spinning, quilting or insert your favorite fiber craft) has not been of the greatest quantity, let's take a deep breath and dive in again and again and again.

The Intensive for 2010 has been announced as has the Weaving Workshop. Check them out and then plan to participate. These are wonderful opportunities to expand your horizons.

See you all at the meetings. Your presence is missed when you are away.

-- Al



Study Group News

Spinning Study Group

The Spinning Study Group will meet at Maralyn's clubhouse on Oct 8 from 6:30-8:30 p.m. for a night of fiber festivity, frivolity, fur wrangling and fuzzy fun. Join us! In November, we will be meeting at the house of Penny Schrafnagel. Contact Lynn for more info, 375-9172.

Day Weaving Study Group

The Day Weaving Group meets on the third Tuesday at 1 p.m. at the homes of participants.

Each participant chooses what they want to study. The group setting gives us the perfect forum and deadline system to accomplish our personal weaving goals. If this is something you are interested in as well, come join us.

The meeting on October 20, will be at the home of Rebecca Winter.

Certificate of Excellence (COE) Study Group

The COE study group will meet next on Saturday, November 7, at 10:00 a.m. We will meet at the Moxie Java on the corner of Vista and Kootenai in Boise. We will meet from 9:30 am to 11:00 am. All are welcome to participate. Call Mary Berent for more info. at 939-8906.

Guild Officers and Chairs

President: Al Hayden 343-7300

Vice-presidents: Cece Stricklin 387-2641

Kathy McGowan 939-7215

Secretary: Cynthia Newman 541-523-2451

Treasurer: Irene Chandler 467-4997

Membership Officer: Penny Schrafnagel 342-1288

Librarian: Pat Ann 452-3181

Newsletter Editor: Rebecca Winter 895-0975

Weaving Intensive Study Group: Al Hayden

Spinning Study Group: Lynn Ruggles 375-9172

COE Study Group: Mary Berent 939-8906

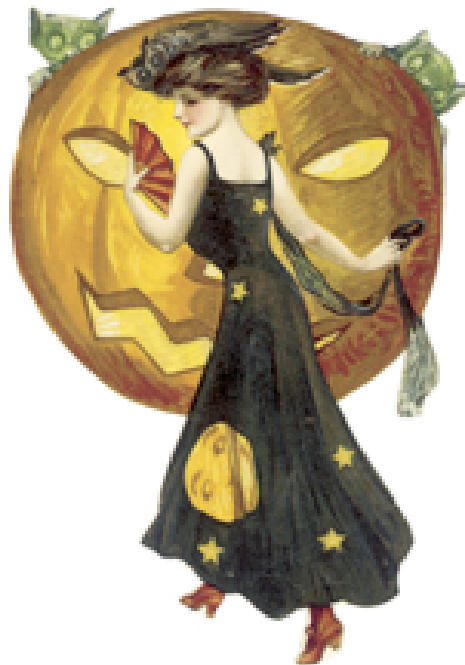
Day Weaving Study Group: Rebecca Winter

Web Master: Vila Cox 323-7736

Websites

<http://www.handweavers-guild-boise.org>

<http://my.calendars.net/handweavers/>



2010 Weaving Intensive Study Group
Handweavers Guild of Boise Valley



Block Substitution



A Weaving Retreat, with Weaving Presented by Each Participant
Saturday, Sunday and Monday - January 16, 17 and 18
9 AM to 5 PM Location to be announced
Fee - \$30.00

What is an Intensive Study Group?

This is a “teacherless” workshop. We each have the opportunity to be the expert in our chosen area of study. There are mentors available if you need some help or direction. Please ask. For this workshop each participant will dress their loom with a weaving structure using the provided Block Draft.

Block Draft

When you sign up for the Intensive you will be provided with a handout. This will include our chosen Block Draft, an explanation of what a Block Draft is, and a list of resources available.

And Then?

Choose your weave structure and apply it to the Block Draft provided. Warp your loom with fiber of your choice. We generally have 12 to 14 participants so plan your warp length accordingly. This will be a “Round Robin” weekend.

And Then?

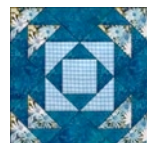
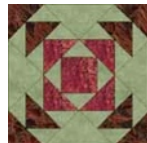
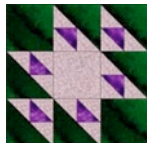
Be prepared to explain to the group the process of substituting the Block Draft with your weave structure. Threading, Tie-up and Treading, (the 3 T’s)

And Then?

Please let AI know what your weave structure is.

And Then?

Come and enjoy the fellowship of like minded people. The Intensives have been a great experience, for advancing your knowledge of the craft and getting to know your fellow weavers.



There Must Be 50 Ways to Weave your Color

Workshop by Ruby Leslie

March 26, 27 and 28, 2010

9 AM – 4 PM

Location: Caldwell Public Library

Cost: \$220.00



Signup: Name: _____

Address: _____

Phone: _____

e-mail: _____

Return your form to Cece Stricklin at the next meeting, or mail to Kathy McGowan, 3496 Holl Drive, Eagle, ID 83616

Note: There is no refund after Feb 1, 2010, if you are unable to attend for any reason. It is O.K. for you to find someone else to take your place.

Please mark the loom you are bringing to the workshop:

Table Loom _____ or Floor Loom _____

harnesses on your loom _____



Connecting Threads
PO Box 6258
Boise ID 83707

The monthly newsletter from the



handweavers guild of boise valley, inc.

Newsletter Highlights and Please Remembers:

- ☀ **Program: The History of Color, by Mary Berent**
- ☀ **Color Code: RED**
- ☀ **The Museum Comes to Life Challenge Show is September 26.**
- ☀ **Dues are Due Now - Plan to join again for wonderful fiber learning opportunities!**
- ☀ **Bring your December 2008 Exchange towel to the October meeting for a group photo.**

