

Connecting Threads

Handweavers Guild
of Boise Valley

October, 2010

Calendar of Events

September 25, 2010 - Museum Comes to Life
Guild Show and Challenge

October 2, 2010 - COE Study Group
At the home of Mary Berent
9:30 to 11:00 am ☞ All are welcome!

October 2, 2010 - Guild Meeting -
At the Home of Kathy McGowan
3496 Holl Drive, Eagle
11:30 am - Business Meeting
12 noon - Social time
1:00 p.m. Program - Warping Demo, by Mary
Berent and Al Hayden

Directions o Kathy's House: Go north on
Eagle Road from Boise or Meridian. Turn
right onto Beacon Light. Turn left onto
Holl Drive and proceed to Kathy's
address.

October 14, 2010 - Spinning Study Group
Maralyn Larson's Clubhouse
6:30 - 8:30pm

October 18, 2010 - Day Weaving Study Group
At the home of Rena Lute
1:00 pm

January 15, 16, 17, 2011 - Weaving Intensive -
Double Weave

March 12, 13, 14, 2011 - Weaving Workshop
Extreme Warp Makeover, by Robyn Spady



October Program: Warping Demonstration

We are excited to present for the October Guild meeting a Warping Demonstration. Our two volunteers, Mary Berent and Al Hayden will cover **front to back, sectional, and back to front warping**. I know for myself, if I don't warp the loom a few times a year, I make stupid mistakes, so I believe there is always room for improvement and we can learn from watching others do this tedious and complicated task. We will also have a **potluck lunch** and will be meeting at **Kathy McGowan's home**. Plan to stay a bit longer than usual to absorb all that you can.

Hope to see you there!

♦Mitzi Meyers, Vice President



Ramblings of the President

Hello Weavers and Spinners:

I hope that you will be able to join us this month for an informative meeting on warping. I used to think that warping back to front was the only way to warp. In fact, I think I even covered my ears when I heard people talking about warping front to back; I was sure that it couldn't possibly have any positive qualities. Two years ago I found that I needed to use the front to back method of warping on a table loom, and you know, there are some really great features about warping front to back. I now try to stay open minded and consider which warping method would be best for the project that I am currently working on. I am looking forward to learning new warping tips and tricks this month. I hope you will join us.

♦Cynthia Newman, President

UFO Program



UFO = Un Finished Objects: those craft/art things you started sometime ago that live in the back of the closet or drawer that you are too guilty to throw out, but for some reason or another you have not taken the time or energy to finish. My hope in this is to help fellow fiber addicts clean out some of that stuff in one way or another. You might get inspired by showing it to the group, getting some wonderful advice from one of us, or decide it really is too bad or ugly to EVER finish, and toss it out of your life, making room for things/projects you want to put your energy into. I am sorry to report a "dog" on the loom does not apply, or fabric waiting to become something. The UFO does not have to be handwoven or handspun, it can be any craft type project you have hanging around. This is a yearlong program so you have until June 2011 to earn a prize.

REQUIREMENTS:

1. Must be brought in to any regular monthly guild meeting in its unfinished/ugly state for all to see along with a 1 short sentence description. (I am concerned this could make our meetings too long so please do keep it short.)
2. Bring it back to any regular monthly guild meeting in all its glory finished for the group to be inspired by (we hope) and to receive a prize for your hard work.



Holiday Party

Note or Greeting Card Exchange



This year for our December Holiday Party in addition to a pot-luck lunch we are going to have a Note or Greeting Card Exchange for all who wish to participate. So far, I have 9 people signed up. We will make a set of cards for the number of participants involved. Each person in the exchange will get a card from each of the other participants. We need everyone who wants to do this to sign up as soon as you possibly can commit - but you must sign up by our November meeting. These non-denominational cards will be handmade; fiber related with preferably handspun, hand knit or hand woven inserts. Also, please include envelopes for your cards.

To sign up please email Mitzi at warpedweaver@hotmail.com or call 208-584-3116.

Here is a link for some ideas thanks to Rebecca. Pdf found at:

<http://www.weavingindiana.org/PDFs/EleanorBest/>



Guild Meeting Minutes

Regular Meeting - Saturday, August 28th, 2010
Adelmann House, Boise

Meeting was **called to order** by Cynthia Newman, president.

Attendance: Cynthia Newman, Irene Chandler, Vila Cox, Ginny King (guest), Julie Gerard, Pat Ann, Al Hayden, Kathy McGowan, Rebecca Winters, Mitzi Meyers, Carolyn Day, Marty Hawkins (new), Lynn Ruggles, Penny Schrafnagel, Judy Talent (new), Mary Berant, Cece Stricklin, Ivy Hart, Melanie Smith, Carol Freeman, Marilyn Larson, Jill Armstrong, Reena Lute.

Vice Presidents report: The workshop for 2011 will be Robyn Spady. It will be held at the Caldwell Public

Library March 12th-14th 2011. The topic is There are Two Sides to Every Cloth. Price for the workshop, as well as sign-up sheets will be available by the next meeting.

We need to start thinking about workshops for 2012. Please let Kathy McGowan know if you have suggestions for teachers.

October meeting will be at Kathy McGowan's house, 3496 Holl Drive, Eagle. Lunch will be a potluck and the program will be demonstrations of 3 ways to warp your loom.

UFO project to begin next meeting. Bring in your UFO's (unfinished objects... can be weaving, knitting, spinning, quilting) to show the group. When you finish the object, bring it in to show. There will be a

prize for finished objects. You may also decide to give the object away or to throw it away. The main idea is to un-clutter your life. There will also be a prize to the person who finishes the most objects.

Holiday Party: The party will be at Mitzi's house (unless there is snow). The exchange this year will be note/greeting/holiday cards. Sign up ahead and bring one card for each participating person. Sign up with Mitzi. The deadline for sign-up is November. They will be "handmade fiber related cards with envelopes". There will be a link in the newsletter for ideas.

Treasurer's Report:

Last month of last year: income = \$630.50
expenses = \$175.60

Last year: income = \$4717.50
expenses = \$4275.85

There will be a new budget next meeting.

Secretary: Not present

Membership: 29 members have paid their dues for 2010-2011. Dues are \$25 and need to be paid to Penny. If you want to be in the directory and on the yahoo list, pay your dues.

Challenge: The Museum Comes to Life is the last Saturday of September. The challenge is Thick and Thin. Categories to be included are:

1. Flat handwoven.
2. Fiber art.
3. Hand spun yarn.
4. Items made from handspun yarn.



The items must have been made this year. This is a "People's Choice" award. Details are in the newsletter. Volunteers are needed. A sign-up sheet was passed around. Entries are due Aug 28th. Help is needed for the Friday before at 1 PM to set up the display. Make arrangements to pick up your items at about 5 PM on the day of the event. There will also be spinners on the porch during the event.

Guild Sponsored Workshop: Cece reported that there will be a guild sponsored workshop presented by Mary Berent on Supplementary Warp. This is on October 16-17 at the Caldwell Public Library. \$120 is the cost. This does include handouts, but not materials.

Weaving Day Study Group: The day study group meets the 3rd Monday of each month. The next meeting is September 20th at Rebecca's Studio at 1012 E. 3rd Street, Meridian.

Intensive: The intensive is the 15th-17th of January. The subject is Doubleweave. It is a 3 day self taught workshop. Cost is \$30.

Spinning Study Group: The spinning group meets the 2nd Thursday of the month at 6:30-8:30 at Marilyn Larson's clubhouse. Meeting topics are as follows:

- September 9: The Effect of Twist on Random Fibers
- October 14: "Face Off: Woolen or Worsted."
- November 11, "Mixed Fibers: Cross Breeding Alpacas and Angoras"
- December 9: "The Benefits of Blending Dark Chocolate and Merino"

COE Study Group: This group meets every other month before the regular guild meeting. They usually meet at Moxie Java on Kootenai and Vista at 9:30 AM. In October they will meet at Mary Berent's house in Eagle.



Misc:

- ♦ Ruth Guildersleeve moved to Salmon Creek Retirement Center.
- ♦ Fabrique and Ewephoria stores in Nampa are closing.
- ♦ Sample Box: no new samples this month.
- ♦ Gold Bag: Mitzi won it. It contained weaving and spinning dolls.

Show and Tell:

- ♦ Melanie Smith: yarn spun from Pat Ann's wool.
- ♦ Ivy deHart: throw out of Pendleton yarn woven on a 16 shaft loom in point twill.
- ♦ Cece Stricklin: drop spindle from Nampa (won by Judy Talent)
- ♦ Marty Hawkins: 1. handwoven cloth that she plans to make a vest of. 2. handwoven vest. 3. samples from weaving workshop with Madelyn Van der Hoot, Whidby Island.
- ♦ Lynn Ruggles: 1. Robyn Spady class samples. 2. knit socks from Mitzi's superwash yarn.
- ♦ Rebecca Winter: 1. thick and thin shadow weave 2. handmade paper
- ♦ Mary Berent: towels made with pearl cotton for her article in Handwoven Magazine.
- ♦ Kathy McGowan: 1. samples from Jason Collingwood twill workshop.
- ♦ Pat Ann: empty cones from yarn. Gave to Cece.
- ♦ Julie Gerard: Doubleweave Book
- ♦ Cynthia Newman: Intermountain Weaver's Conference Newsletter

Program: Indigo Dyeing by Cece Stricklin

♦ Respectfully Submitted, Janet Stanger, Secretary

Board Meeting Minutes

Saturday, August 28th, 2010

Attendance: Al Hayden, Rebecca Winter, Kathy McGowan, Mitzi Meyers, Penny Schraufnagel, Irene Chandler and Cynthia Newman.

Rebecca reported that the day study group is going to continue as is, meeting on the 3rd Monday of the month. She also reported that the sample exchange will continue this year and she has no news to report in regard to the newsletter.

Kathy McGowan reported that the Robin Spady workshop will be March 12th - 14th, 2011, at the Caldwell Library. She is still working on calculating the expenses for the workshop such as airfare and supplies so that she can come up with a per person workshop fee. Al suggested that Kathy touch base with the library to make sure we are still on the schedule. Kathy said that, as a co-vice-president, she will be handling the workshops and Mitzi will be handling the programs.

Mitzi reported that the October meeting will be held at Kathy McGowan's house in Eagle. Al will demonstrate warping front to back, and Mary Berent will demonstrate sectional warping and warping back to front. Al will notify the museum that we will not be using the Adelman House in October, but we will have 6 meetings there throughout the following guild year. It was voted that we give the museum a \$120 donation for the 2010-2011 year.

Mitzi would like to introduce a new guild project for 2010-2011 called UFO's or unfinished objects/projects. Mitzi requested \$50, to be taken from the study group budget, to be used for incentive prizes for members that complete a UFO. She would also like to encourage members to sign up for a gift card exchange for the December meeting. Mitzi will ask members to sign up if they are interested. It was decided that the participants would make one card for each member that wishes to exchange cards.

Penny said that we have 29 paid members as of the Board meeting.

Rebecca Winter announced to the vice-presidents that she would like to be considered as a workshop teacher. She is offering: Color and Weave - Getting to the Stars and The Shadow Knows. These are 3-day round-robin workshops.

♥ Respectfully Submitted, Cynthia Newman
for Janet Stanger



The Challenge Show

◆ ◆ ◆ **Thick & Thin** ◆ ◆ ◆

The winners from the Challenge Show will be announced at the October Meeting. Thank you to all who participated, volunteered and helped create a wonderful show.

Dues are Due

Guild dues are due in June of each year. So they are due now. Individual membership is \$25.00 per year. Bring them to the August meeting or contact Penny Schraufnagel, Membership Officer, for more information, at 342-1288.

Monthly Sample Exchange

For the October meeting we do not have a new sample to share. ☹ Next month we will have one.

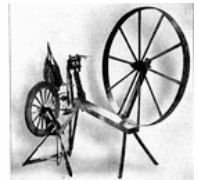
Remember to pull your samples from the Sample Exchange Box at each regular Guild meeting. And remember to check your name off the list in each file folder. If you would like participate or have questions, contact the Sample Chair, Rebecca Winter.

Study Group News

♥ Spinning Study Group

The Spinning Study Group will meet on **October 14**, from 6:30 - 8:30pm at Maralyn Larson's clubhouse in Meridian. The study subject this month is "Face Off: Woolen or Worsted."

Future meetings are: November 11, "Mixed Fibers: Cross Breeding Alpacas and Angoras"; December 9 (at Maralyn's house), "The Benefits of Blending Dark Chocolate and Merino". Hope to see you all there! For directions, contact either Maralyn (888-2650) or Lynn (375-9172).



♥ Day Weaving Study Group

October 18: We will meet at the home of Rena Lute, 2273 West Burns, Eagle, at 1:00 pm. Call Rebecca at 859-2822, for more information.



♥ Certificate of Excellence (COE) Study Group

The COE study group will meet on Saturday, **October 2**, at 9:30 a.m. We will meet at the home of Mary Berent. All are welcome to participate. Call Mary Berent for more info at 939-8906.

Guild Officers and Chairs

President: Cynthia Newman (541) 523-2451
Vice-presidents: Mitzi Meyers 340-9775
Kathy McGowan 939-7215
Secretary: Janet Stanger 377-0746
Treasurer: Irene Chandler 467-4997
Membership Officer: Penny Schraufnagel 342-1288
Librarian: Katrina Duckett 697-7040

Newsletter Editor: Rebecca Winter 859-2822
Weaving Intensive Study Group: Vila 323-7736
Spinning Study Group: Lynn Ruggles 375-9172
COE Study Group: Mary Berent 939-8906
Day Weaving Study Group: Rebecca Winter 859-2822
Web Master: Vila Cox 323-7736
Past President - Al Hayden - 343-7300

Website

<http://www.handweavers-guild-boise.org>



Weaver's Personality Survey

7 Sep 2010 by [Madelyn van der Hoogt](#)

Write the number for each answer (you must answer every question and choose only one answer for each). Add up the numbers of your answers (11 numbers).

A. I would rather weave

1. An alpaca shawl.
2. Linen placemats or tablecloths.
3. A sampler using networking or advancing twills.

B. I would rather weave

1. Some fabric to embellish (embroider, paint, add beads, burnout, or ?).
2. An art piece for the wall.
3. Something with twenty pattern blocks.

C. I became a weaver mostly because

1. I needed to do something with my handspun.
2. I love the feel of handwoven fabrics.
3. Looms are so fascinating.

D. My favorite weaving activity is

1. Mixing colors.
2. Using yarns from my stash.
3. Discovering a new weave structure.

E. I like best

1. The rhythm of weaving.
2. Warping.
3. Getting a new loom.

F. If I had 10 minutes to look, which exhibit would I attend

1. A pen of alpacas.
2. A display of silk cocoons, fleeces, flax, and skeins of handspuns.
3. A doubleweave exhibit.
4. A demonstration of an inexpensive jacquard loom.

G. The following most describes me

1. I want everything I wear to be handwoven and sewn by me.
2. I love weaving textiles for my house.
3. I love weaving samples in new weave structures.
4. I love playing with weave structures on my computer.

H. The following most describes me

1. I want everything in my house to be handwoven.
2. I never follow a recipe for weaving; I like to see what happens on the loom.
3. I'm not too interested in weaving after I see the first inch or two.

I. I agree most that

1. I am a yarnaholic.
2. The more colors the better.
3. The more blocks the better.
4. I am a loomaholic.

J. When I weave

1. I insert the weft, gently press it in place with the beater, then change the shed to lock it in.
2. I tap the weft in with the beater a time or two, then change the shed and tap a time or two again.
3. I like the feel of a good solid 'whap,' and I beat only once.

K. I agree most that

1. A lifetime is not enough to explore all the exciting possibilities on a 4-shaft loom.
2. Looms made of cherry or walnut are wonderful.
3. Looms are wonderful that are sturdy, easy to tie-up and treadle, and provide a good shed.
4. The more shafts the better.
5. Weaving on a computer-aided dobby loom is the ultimate in handweaving.

Answers :

21-27 To Be Determined

28-38 Structure-Pattern

11-20 Color-Texture

<http://www.weavingtoday.com/blogs/madelyn/archive/2010/09/07/weaver-s-personality-survey.aspx>

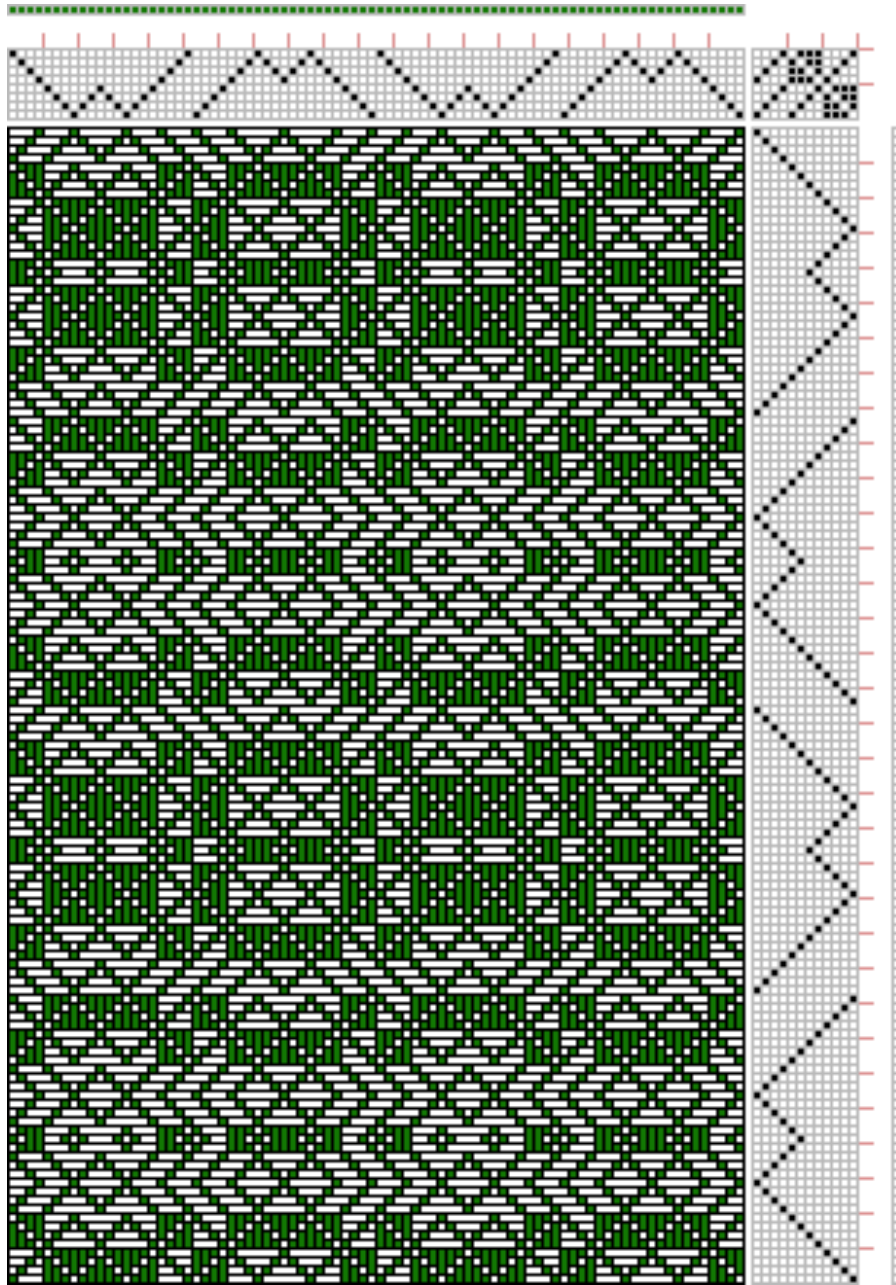


Draft Inspirations

Here is another draft from <http://www.handweaving.net> You can go there and enter the number to see all the specifics about each draft, as well as download a .wif file. This one is an interesting twill. The draft almost appears as a plaid, but offers some diagonal lines, as well. I like contrasting elements in a design. Do you?

◆ Your Editor

Draft #61321



Handweaver's Guild of Boise Valley 2011 Weaving Workshop: Extreme Warp Makeover

Taught by Robyn Spady

March 12-14th at the Caldwell Public Library

Cost: \$150



Class Description: Hate to warp, but love to weave? Want more versatility from a single warp? Then this is a workshop for you! In this workshop, participants will warp their loom with their choice of one of three four-shaft threadings and perform an extreme makeover and weave it many different ways..... from twill, lace, and overshot to swivel, corduroy, deflected weft and double-faced. At the same time, participants are presented with the basics of different structures and how to adapt a single threading to weave a number of different weaves, including concepts such as star vs. rose fashion, weaving on opposites, and echo treading.

Don't miss it!

Signup:

Name _____

Address: _____

Phone: _____

e-mail: _____



Return your form to Kathy McGowan, 3496 Holl Drive, Eagle, ID 83616

Note: There is no refund after Feb 1, 2011 if you are unable to attend for any reason. You may find someone to take your place.

What loom are you bringing to the workshop?

Table Loom _____ or Floor Loom _____

How many harnesses? _____

The monthly newsletter from the



handweavers guild of boise valley, inc.

October Newsletter Highlights:

- ☀ Challenge Show: September 25th, at the Adelman House
- ☀ October Program: Warping Demonstrations, at the Home of Kathy McGowan
- ☀ Robyn Spady Workshop: Coming in March "Extreme Warp Makeover"
- ☀ New!! Year Long Program: UFO's
- ☀ New!! Holiday Party: Note or Greeting Card Exchange

