

# ☞ Connecting Threads ☞ ☞

Handweavers Guild of Boise Valley  
October, 2012

## Program: Felted Pumpkin

The October program we will be about learning to needle felt. Our project will be this cute pumpkin. Join us after the general meeting to learn to use up those little bits of left over fiber to make all kinds of neat things with the needle felting technique. This is a no water felting method. If you have needle felting needles please bring them. If you don't have any, that's ok. There will be plenty available to borrow or purchase. Kits to make the pumpkin will be available for \$2.00.



## Calendar of Events

- September 29, 2010 - Museum Comes to Life  
Guild Show and Challenge
- October 6, 2012 - Guild Meeting  
Boise Historical Museum at the Adelman House  
11:30 am - Business Meeting  
12:30 am - Social time  
1:00 p.m. Program-**Felted Pumpkin**, Melanie Smith  
\*\*\*\*\*
- September 27, 2012 - Knitting Study Group  
6:30 to 8:30 pm  
Melanie Smith's Home  
(No meeting in October)
- October 6, 2012 - COE Study Group  
9:30 to 11:00 am  
Moxie Java, 1122 S Vista, Boise
- October 6, 2012 - Beginning Weaving Study Group  
Immediately after the Regular Meeting  
Boise Historical Museum at the Adelman House
- October 9, 2012 - Bobbin Lace Study Group  
6:30 to 8:30 pm  
Rebecca's Studio House
- October 11, 2012 - Spinning Study Group  
6:30-8:30pm  
Maralyn's Clubhouse
- October 15, 2012 - Day Weaving Study Group  
1:30 to 3:30 pm  
The Home of Rena Lute
- Nov. 4, 2012 -From Fleece to Garment Study Group  
2 to 4 pm  
Home of Melanie Smith

## Christmas Exchange

The Christmas Exchange this year will be a "mystery bag" exchange. I'm not sure how else to describe it! Each person interested in participating will get a small bag of fiber/weaving related things – yarn, fiber, buttons and who knows what else. You need to use at least a little bit of each thing in the bag in your exchange item. You may use your own additional yarn or fiber, too. The item may be anything you choose to make. For each item you bring, you will take one home. While there won't be any creativity in the bag, you will need to use some of that for this fun project, too!!

## Challenge 2012 - Color Explosion Show

Saturday, September 29, is Museum Comes to Life at the Idaho Historical Museum. The guild will be participating with the 2012 Challenge, Color Explosion, weaving, spinning, and the study group and other guild project display at the Adelman House. Set-up will be on Friday, September 28, at 1:30 at the Adelman House. Please come and join us, even if you didn't sign up, and can't spend the day, we would love to have you participate.

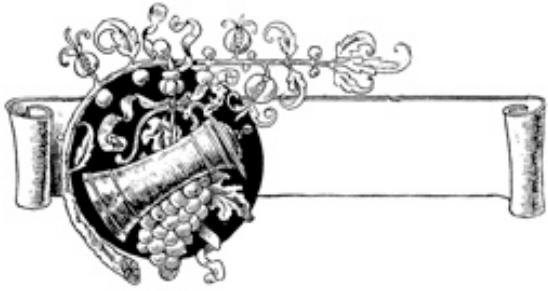
The winners of the 2012 Challenge will be announced at the October guild meeting.

If you have any questions, please contact one of the Challenge committee members: Julie Gerrard, Melanie Smith, or Vila Cox. ♦ Julie Gerrard

## From the Librarian

Does anyone have a metal cabinet (2-door, 3 or 4 metal shelves, lockable and has the key) that they would like to donate or sell to the guild for the library? New ones cost about \$300. A used one, in good condition, could be used. The used furniture stores in Boise said that these go out of the store as fast as they come in.

◆ Judy Tallent



## UFO Program

The UFO (Un-Finished Object) program will be in full force again this year!! Same "rules" as last year. Bring the unfinished object to a regular meeting and give a short explanation and fill out a short form registering your intensions, then bring the finished thing-of-beauty to a regular meeting and collect your prize for finishing it. An easy and fun way to clean out those old projects.

◆ Mary Berent

## Notes From Your President

I am standing in for our President, Mitzi Meyers. We send her condolences at the loss of her father.

\*\*\*\*\*

The days are getting shorter. Are you coming inside from your garden, and are you thinking about fiber art? The guild has a lot to offer to get your creative juices going. We now have 8 study groups, including the Intensive. Come join one or several to see what new idea you may wish to incorporate into your fiber art.

Al has a stimulating idea, as well. Weave something using one of his drafts to share at the November meeting. How many different kinds of cloth can we make using this single draft?

◆ Your Newsletter Editor, Rebecca Winter

## From Your Membership Officer

Please welcome new member Darci Standefer to the Handweaver's Guild.

Also, please send in your dues payment of \$25 for year 2012-13 right away, in order to be included in the directory for the year. You can mail your check to Irene Chandler at 2118 Belle Aire, Nampa, Id. 83686. Thank you.

◆ Irene Chandler

## Monthly Sample Exchange

This month's sample is provided by Melanie Smith. The sample is handspun wool that has been dyed. She has dyed white and brown wool in the same dye pot to show the interaction of color. A classic and classy example of over-dyeing.

It gets one to thinking what can be done with that not-so-favorite color of yarn in your stash; there may be hope for it yet.

Thanks Melanie.

◆ Al Hayden

### **Sample Exchange Box**

Members may pull samples from the **Sample Exchange Box** at each regular guild meeting. And remember to check your name off the list in **each** file folder. If you would like to participate or have questions, contact the Sample Chairperson.

Also, remember, there are samples from last year that are available to anyone toward the back of the box.

Please turn your Samples in to Al Hayden, the Sample Chairperson.

## Fleece to Garment Study Group

We had a great time at the fair is August looking at all the wonderful fleeces. Even a few found new homes. Now it's time to get those fleeces cleaned. Our next meeting will be Sunday Nov. 4<sup>th</sup> from 2 -4 at Melanie Smith's home. We will be talking about ways to clean your fleece. A demo on cleaning a fleece in the washing machine will be done that day. If you haven't already found your fleece please do so as soon as you can. If you are having trouble finding one please let Melanie know she can give you some great resources on where to look. Our next meeting will be after the holidays in January when we will be talking about ways to spin your yarn for your garment. If you have any questions please call or email Melanie at 385-0085 or [yarnsnthreads@aol.com](mailto:yarnsnthreads@aol.com)

◆ Melanie Smith



## Study Group News

### ♥ Spinning Study Group

The Spinning Study Group will meet at Maralyn's clubhouse on October 11 from 6:30-8:30pm for a haunting evening filled with Ghosts of Fiber Past, Stash Skeletons and Bobbin Bones. Color this month is Pumpkin. If you are interested, please contact Lynn Ruggles, 375-9172.



### ♥ Certificate of Excellence (COE) Study Group

The COE Study Group will be held on **October 6** at 9:30 a.m. at the Moxie Java on Vista in Boise. As usual, everyone is invited. For information call Mary Berent, 939-8906.

### ♥ Day Weaving Study Group

We will meet on **October 15**, at the Home of Mary Berent, 1:30 p.m. Call Rebecca at 859-2822, for more information.



♥ The Beginning Weavers Group will start meeting directly after the regular Guild meeting on **October 6th**. If you have any questions please email me at [anneroglevie@gmail.com](mailto:anneroglevie@gmail.com) or call 208-994-2725.

### ♥ Bobbin Lace Study Group

We meet on the second Tuesday of every month. In **October** it will be on the **9th**, at Rebecca's Studio House at 6:30 pm. Call Vila for information, 323-7736



### ♥ Fleece to Garment Study Group

Our next meeting will be Sunday, **November 4**, from 2 to 4 pm at Melanie Smith's home.

### ♥ Knitting Study Group



Needing help to get those knitting or crochet UFO's finished? Why not join us at the next knitting study group. We will be meeting on **September 27th** at Melanie Smith's home 6:30 to 8:30. *We will not be meeting in October* because Melanie will be out of town. If you have any questions please call or email Melanie at 385-0085 or [yarnsntreads@aol.com](mailto:yarnsntreads@aol.com)

## Advertisement - Loom For Sale



### **Mighty Wolf Schacht Loom, 36 inches wide.**

- 8 harness, 10 treadles
- Lots of extra metal heddles
- Warping board
- Raddle for back beam
- 4 reeds - Two are 36" - 8 dent and 16 dent
- Two are 20" - 8 dent and 6 dent
- There are many lease sticks
- Many shuttles
- Lots of bobbins
- Some coned weaving fiber.
- Bobbin winder

All for \$800.

Also, there are many weaving books, to be sold separately.

♦ Marion Corron, 378-4819, [mcorron@bridger.biz](mailto:mcorron@bridger.biz)

## Guild Board Meeting Minutes

August 14, 2012 -- Moxie Java, on Chinden

Present: Rebecca Winter, Irene Chandler, Mary Berent, Mitzi Meyers, Melanie Smith, Janet Stanger, Rena Lute.

President: Mitzi reports that the museum is going to allow us to put in another cabinet. Mitzi also reported that we would not be getting an itemized billing from the museum.

Vice Presidents Mary and Rena reported that they are having a hard time filling the monthly program schedule. After some suggestions and some discussion, the Schedule was set. Sept. will be Mary on Carpet Warp, Oct. Melanie on Felted Pumpkins, Nov. Al will present a program on Drafting. Dec. is the potluck with a Mystery Exchange. Jan. will be Rebecca on Summer and Winter. February will be Melanie on Spinning. March Lynn Inkle Weaving, April Janet will present Beading Techniques. May is the Yarn and Equipment Sale and June is the Picnic. Mary explained the December Mystery Exchange. It starts with a bag of random materials, which will be provided to each participant. They are to make something for the exchange using some of everything provided in the bag. You may add your own items to the exchange.

Treasurer: Melanie reported that she has received \$575.00 from membership dues, \$10.00 from equipment rental making a deposit of \$585.00. After deposit we have a balance in checking of \$4,673.25. Our savings account balance is \$4,508.13 and our CD has \$12,738.93.

Secretary Janet questioned who was supposed to answer questions on the Yahoo group. Janet reported that she has noticed some that are not being responded to. After some discussion it was decided that anybody may answer the questions, but Janet will monitor and make sure they get answered.

Membership: Irene reports that we now have 34 paid members and requests that a reminder to pay dues be put in the newsletter. She is busy working on the membership directory. She had questions about ad sizes and costs.

Policy Committee: Rebecca reports that the committee has met and she is in the process of retyping the Policies to be submitted to the executive board for approval. The job descriptions are already on line for review.



Day Weaving Study group: Rebecca set the schedule for the next few months. Sept. meeting will be at Mary Berent's home. Oct. will be Rena Lute and Nov. will be Melanie Smith.

❖ Respectfully Submitted, Janet Stanger, Secretary



## Guild Meeting Minutes

August 25, 2012 -- Adelman House

Present: Janet Stanger, Penny Schraufnagel, Mary Berent, Julie Gerrard, Al Hayden, Mary Siedenstrang, Irene Chandler, Rena Lute, Emma Smith, Melanie Smith, Lynn Ruggles, Vila Cox, Elizabeth Perez, Ivy DeHart, Judy Tallent, Darci Standefer, Rebecca Winter, Nancy Swenson, Joan Sheehan.

Meeting was called to order by VP Mary Berent in the absence of President, Mitzi Myers.

After introductions VP Rena Lute, announced the monthly programs: Today's program will be Mary Berent on Carpet Warp, Oct. - Melanie on Felted Pumpkins, Nov. - Al Hayden will present a program on Drafting. Dec. is the potluck with the Mystery Exchange. January will be Rebecca on Summer & Winter. Also in January will be the Intensive Workshop with the theme of Summer & Winter. Feb. is Melanie on Spinning. Also in Feb. Lynn will be giving a spinning workshop called "Wheel of Color." March Lynn on Inkle Weaving. April - Janet will present Beading Techniques. May is the Yarn and Equipment Sale and June is the Picnic. Mary Berent added that by October sign-up sheets and prices will be available for the workshops. Lynn's workshop is Feb 23<sup>rd</sup>, 24<sup>th</sup> and 25<sup>th</sup>. Mary's Workshop will be on Supplementary Warp, April 27<sup>th</sup>, 28<sup>th</sup> and 29<sup>th</sup>.

Treasurer Melanie Smith reports that there is \$4,088.25 in checking and \$4,508.13 and we also have the CD.

Librarian: Judy Tallent was notified that the Museum had approved another cabinet. She is going to wait to reorganize the library until she gets the cabinet. It was suggested to watch Craig's List for free or reduced cabinet also to check out the new and used office supplies. Treasurer has allowed this in our budget.

The Membership Officer, Irene Chandler, reminded everyone that their dues are due and she was accepting dues today. Irene welcomed 2 new members, Darci and Liz. Irene is working on updating the Guild Directory and announced that Rebecca Winter had updated the membership form.

Newsletter Editor, Rebecca Winter, announced the Newsletter is up and going again after the summer break. Rebecca has also been working on the policy committee. She has the job descriptions on the web page and is currently typing up the articles for board approval before presenting to the Guild.

Web Master, Vila Cox, asked for more information on the workshops and meetings to put on the web page.

Sample Exchange Chairman, Al Hayden, explained the Sample Exchange to the new members. Irene Chandler provided September's sample. If you want to sign-up to provide a sample for a month, check with him.

Rebecca Winter is also our ANWG representative. She is asking if the Guild wanted to do a Booth at the Conference. The Conference is in June, 2013, and is held in Bellingham, Washington. The theme is Connecting Threads.

Show and Tell: Lynn Ruggles showed the natural dyed skeins from the monthly spinning session held at Pat Ann's. If you already picked up your skeins they need to be washed. The skeins she still has to pass out have been washed. She also presented sample of antique coverlet. Vila shared the silk warp scarves she made. It is the finest work that she has ever made. Liz, who is taking lessons from Vila, presented a sampler she had made and a mask. Ivy DeHart shared a painted scarf she had made for the Challenge. Nancy Swenson showed a basket full of Easter color rovings she had dyed. Nancy also shared an antique tablecloth for people to try to figure how it was made. It appears to be netted with needle lace woven in some of the spaces. Joan Sheehan announced she had won a blue ribbon at the Fair on her hand woven angora yarn. Rebecca asks that someone take the names and pictures of the items entered in the Fair and she will put them in the news letter. Melanie Smith volunteered to do that. Lynn

Ruggles volunteered a rack to be used at the Challenge. Mary Berent announced that she went to Convergence. Rebecca Winter shared 2 more samples of her stars. She thinks she is done with them after 8 years. She also shared a sample of felted stars and a collapse stars fabric which she has never seen before so she is thinking she has invented a new fabric. She also shared a painted scarf and a book titled "Weft Face Pattern Weaving" that she had purchased on ebay. She is now doing Saori weaving. Al Haden shared a chenille and pearl cotton scarf. Emma Smith shared that she had entered a skirt in the fair and won a ribbon. Melanie Smith announced that she had made a double weave blanket.

Challenge Chairman Julie Gerrard explained to the new people what to expect at the Challenge. She also explained the criteria for the Challenge. Julie passed around the sign-up sheet to sign up for a time slot and area to help. She also reminded people to wear period dress. Entries for the challenge are due so get them in to her or the committee as soon as possible. She needs things from the Study Groups for display.

The Study groups announced times and dates and specifics of their group. Refer to schedule printed in the news letter and web page. The New Weavers study group will meet Oct. 6<sup>th</sup> after the regular guild meeting. The Sheep to Garment is meeting today at the fair. Melanie has your tickets. T

Mary Berent read a letter from Gary Mercer thanking the guild for their help in the sale of Linda Mercer estate. A special thank you was given to Penny Schraufnagel and Mary Williams. The sale earned \$2,500 dollars which was donated to the Terry Reilly Clinic.

UFO's: Rena Lute explained the UFO program. Irene gave away some articles on needle work. She also submitted 4 UFO's a picture of the fountain, a quilt, a landscape, and finish writing a book that she had started in 1981. Rebecca offered 5 bags of warps from her warp box that she is going to make something with. Emma Smith submitted a clothesline crochet basket. Lynn submitted a vest from the sheep in her back yard. Ivy DeHart submitted a quilt and something with her Pendleton salvages and Nancy Swenson promises that she will finish her socks.

Gold Bag was won by Nancy Swenson it was a bag of a variety of Mohair Yarn.

Meeting adjourned for monthly program

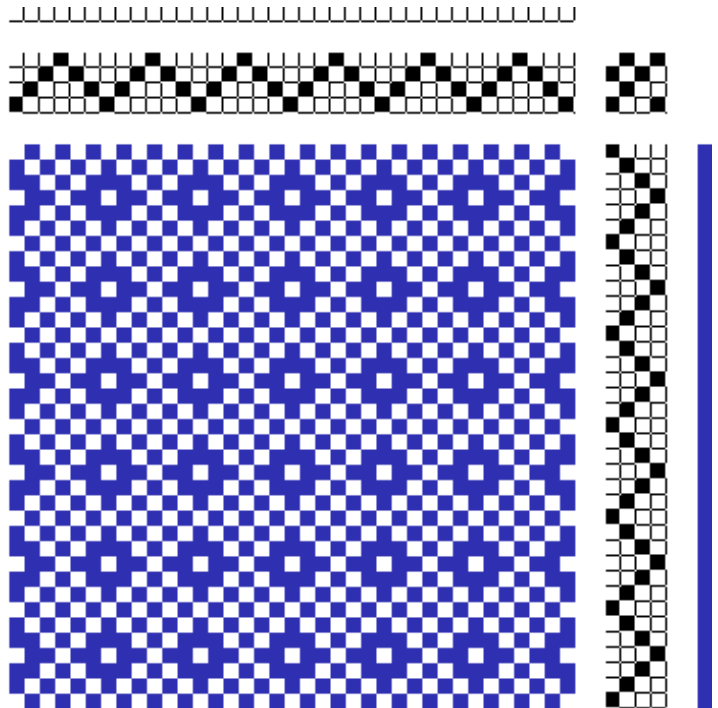
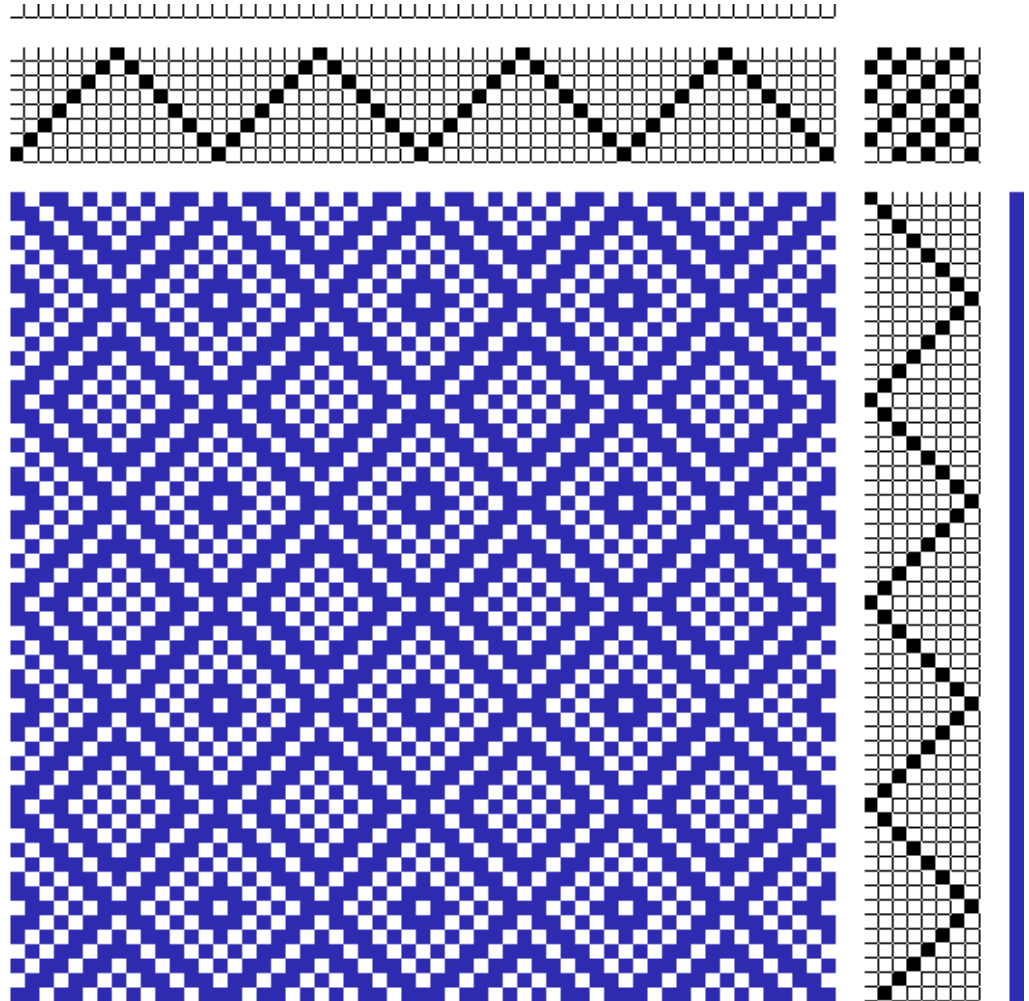
◆ Respectfully Submitted, Janet Stanger, Secretary



## Weave a Draft: Call for Volunteers!!

I am looking for volunteers to weave samples for a program on "Drafts and the Guild Sample Record Sheet." The program will be given at the November, 2012, meeting. The idea that I want to explore is how different weavers would utilize the same draft. How many variations of fiber, size of yarn, color and function of finished cloth can we come up with? The draft is an 8 shaft point twill. Plus, there is a 4 shaft version that includes some of the elements from the 8 shaft draft.

◆ Al Hayden



# Mary Berent

## Supplementary Warp Workshop

a Weaving workshop sponsored by the Handweavers Guild of Boise Valley  
Saturday, April 27; Sunday, April 28; and Monday, April 29, 2013

Mark your calendars for three days of fast paced weaving, fun and learning! This workshop will get you thinking about what you can do with your loom in a whole new way.

Supplementary warp, or supplemental warp is a technique that opens a world of fabulous design possibilities. It allows the weaver to plan complex patterns that can be woven with 8 or fewer shafts and with only one shuttle. It allows for various tensions within the same warp, allowing some very interesting effects. Once weavers allow themselves to think differently about warp tension, the design possibilities are limitless. Many designs that LOOK complex are explained and turned weaves are explored. This is a round-robin workshop using 4 and 8 shaft looms.

The workshop will be held at the Caldwell Public Library Community Room. You will need to bring a loom warped according to instructions, weft yarn for that loom, shuttle(s) for that loom, basic weaving equipment (threading hook, scissors, tapestry needle, paper and pencil for note taking, masking tape, etc.) and your lunch each day. The cost of the workshop is \$95 for members of the Handweavers Guild of BoiseValley, with an additional materials fee of \$20 for a total of \$115 for the three day workshop. The total fee for non-Guild members is \$140 and includes membership in the Guild. This will be three fantastic days of weaving fun!

Name \_\_\_\_\_ email address \_\_\_\_\_

Phone \_\_\_\_\_ cell phone \_\_\_\_\_

To register send a check for the full amount to: Rena Lute, 2273 W Burns Street, Eagle, Idaho 83616, cell 891-2111.



# Lynn Ruggles Wheel of Color

a Spinning workshop sponsored by the Handweavers Guild of Boise Valley  
Saturday, February 23; Sunday, February 24; and Monday, February 25, 2013

This will be a wonderful workshop exploring spinning in color, from color theory to color reality!

Beginning with three colors of fiber, you will blend and spin colors to create your own fiber color wheel. Along the way, you will learn how to use a color wheel to choose colors and look at what happens when the “color wheel rules” are broken. You will learn how colors interact and how to combine them for the most subdued or eye-catching vibrant effects. You will learn different spinning techniques and different types of yarn which will enhance the colors in the fiber and look at various ways to ply depending on what color effect you wish to achieve. Multi-dyed rovings will also be examined for their characteristics. Are the colors sharp and well defined? Do the colors bleed into each other? You will learn how to make the most out of each different color-way and you will spin, blend and ply them using a variety of techniques that will enhance the color rather than dull it.

The workshop will be held at the Caldwell Public Library Community Room. You will need to bring a working spinning wheel with a medium size whorl, at least 2 extra bobbins, lazy kate, handcards (regular, not cotton), plus basic spinning supplies (small niddy-noddy, extra drive band, oil bottle, etc.) and your lunch each day. The cost of the workshop is \$95 for members of the Handweavers Guild of Boise Valley, with an additional materials fee of \$35 for a total of \$130 for the three day workshop. The total fee for non-Guild members is \$155 and includes membership in the Guild. This will be three fantastic days of fiber fun!

Name \_\_\_\_\_ email address \_\_\_\_\_

Phone \_\_\_\_\_ cell phone \_\_\_\_\_

To register send a check for the full amount to: Mary Berent, 769 N Grey Pebble Way, Eagle, Idaho 83616.  
Phone 939-8906.



**HANDWEAVERS GUILD OF BOISE VALLEY PRESENTS:**

## **SUMMER AND WINTER INTENSIVE 2013**

**Saturday, Sunday and Monday, January 19, 20 and 21, 2013, 9-5pm**

**Price: \$30.00**

The Intensive Study is a Round Robin of a particular weave structure or weaving concept. Each person will choose a **SUMMER AND WINTER** draft before the workshop, warp their loom using the draft, and weave the first sample. As a group, we will meet for 3 days so that each person has a chance to weave a sample on each of the looms brought by participants. You will take home a notebook containing drafts for each sample, your woven samples, and information that may be helpful in understanding each sample.

### **Before the Workshop:**

- ❖ Sign up for the workshop and specify which draft you will be using (name of pattern or pattern reference).
- ❖ Choose a **SUMMER AND WINTER** draft and appropriate yarns. Yarn choice is up to you.
- ❖ Warp your loom and weave the sample you have chosen.
- ❖ Make notes on what procedure you followed in the weaving to provide information to others during the workshop.

### **By January 3, 2013:**

Provide a draft and other notes on your chosen sample to the workshop coordinator (PDF or Word format preferred, paper copies accepted as well). The workshop coordinator will prepare a notebook for each person ahead of time containing all the drafts so that everyone has this available during the workshop.

### **January 19-21 Workshop:**

- ❖ Bring your loom, warped and ready to weave, as well as shuttles and weft yarn for others to weave your sample. You may bring additional yarns in other colors or weights for people to weave alternate samples.
- ❖ Tags to mark your samples woven on other looms.
- ❖ Thick yarn or paper strips to place between samples woven on each loom.
- ❖ Other weaving supplies you may want to have such as: scissors, notepaper, pen, needles for hem stitching, etc.



# SUMMER AND WINTER INTENSIVE

**JANUARY 19, 20 AND 21, 2013**

## **Workshop Information**

Each participant will bring a warped loom to the workshop, warped with a **SUMMER AND WINTER** draft, in colors and threads chosen by the weaver. Participants will provide shuttles and yarn to be used at their loom. Send your draft in printable form by January 3, 2013 to Lynn. Note that Lynn does not have the ability to print out WIF files.

The Intensive is limited to 20 participants who must be members of the guild. Anyone who is not a member who would like to take the workshop is invited to join the guild.

Cancellations made by January 3 will receive a full refund. Refunds after that date will be considered on an individual basis.

Return the following form with your fee to:

(checks made out to HGBV)

*Lynn Ruggles  
4711 N Dalton Lane  
Boise, ID 83704*

### **SUMMER AND WINTER INTENSIVE**

Name.....

Address.....

Phone.....

E-mail.....

Loom you are planning to use:

Brand..... Number of Harnesses.....

Draft.....

Connecting Threads  
PO Box 6258  
Boise ID 83707

The monthly newsletter from the



handweavers guild of boise valley, inc.

## Newsletter Highlights and Please Remembers:

**October Program: Felted Pumpkin**

**Find Workshop and Intensive Information**

**Have you Paid your Dues?**

